

SUPERMICR[®]

SuperBlade[®]



User's Manual

Revision 1.1b

The information in this User's Manual has been carefully reviewed and is believed to be accurate. The vendor assumes no responsibility for any inaccuracies that may be contained in this document, makes no commitment to update or to keep current the information in this manual, or to notify any person or organization of the updates. **Please Note: For the most up-to-date version of this manual, please see our web site at www.supermicro.com.**

Super Micro Computer, Inc. ("Supermicro") reserves the right to make changes to the product described in this manual at any time and without notice. This product, including software and documentation, is the property of Supermicro and/or its licensors, and is supplied only under a license. Any use or reproduction of this product is not allowed, except as expressly permitted by the terms of said license.

IN NO EVENT WILL SUPERMICRO BE LIABLE FOR DIRECT, INDIRECT, SPECIAL, INCIDENTAL, SPECULATIVE OR CONSEQUENTIAL DAMAGES ARISING FROM THE USE OR INABILITY TO USE THIS PRODUCT OR DOCUMENTATION, EVEN IF ADVISED OF THE POSSIBILITY OF SUCH DAMAGES. IN PARTICULAR, SUPERMICRO SHALL NOT HAVE LIABILITY FOR ANY HARDWARE, SOFTWARE, OR DATA STORED OR USED WITH THE PRODUCT, INCLUDING THE COSTS OF REPAIRING, REPLACING, INTEGRATING, INSTALLING OR RECOVERING SUCH HARDWARE, SOFTWARE, OR DATA.

Any disputes arising between manufacturer and customer shall be governed by the laws of Santa Clara County in the State of California, USA. The State of California, County of Santa Clara shall be the exclusive venue for the resolution of any such disputes. Super Micro's total liability for all claims will not exceed the price paid for the hardware product.

FCC Statement: This equipment has been tested and found to comply with the limits for a Class A digital device pursuant to Part 15 of the FCC Rules. These limits are designed to provide reasonable protection against harmful interference when the equipment is operated in a commercial environment. This equipment generates, uses, and can radiate radio frequency energy and, if not installed and used in accordance with the manufacturer's instruction manual, may cause harmful interference with radio communications. Operation of this equipment in a residential area is likely to cause harmful interference, in which case you will be required to correct the interference at your own expense.

California Best Management Practices Regulations for Perchlorate Materials: This Perchlorate warning applies only to products containing CR (Manganese Dioxide) Lithium coin cells. Perchlorate Material-special handling may apply. See www.dtsc.ca.gov/hazardouswaste/perchlorate for further details.



WARNING: HANDLING OF LEAD SOLDER MATERIALS USED IN THIS PRODUCT MAY EXPOSE YOU TO LEAD, A CHEMICAL KNOWN TO THE STATE OF CALIFORNIA TO CAUSE BIRTH DEFECTS AND OTHER REPRODUCTIVE HARM.

Manual Revision 1.1b

Release Date: April 22, 2014

Unless you request and receive written permission from Super Micro Computer, Inc., you may not copy any part of this document.

Information in this document is subject to change without notice. Other products and companies referred to herein are trademarks or registered trademarks of their respective companies or mark holders.

Copyright © 2013 by Super Micro Computer, Inc.
All rights reserved.

Printed in the United States of America

Preface

About this Manual

This manual is written for professional system integrators, Information Technology professionals, service personnel and technicians. It provides information for the installation and use of Supermicro's SuperBlade system. Installation and maintenance should be performed by experienced professionals only.

Manual Organization

Chapter 1: Introduction

The first chapter provides a checklist of the main components included with the blade system and describes the main features of the mainboard and enclosure. A quick start procedure is also provided for your use.

Chapter 2: System Safety

You should familiarize yourself with this chapter for a general overview of safety precautions that should be followed when installing and servicing the SuperBlade.

Chapter 3: Setup and Installation

Refer here for details on installing the SuperBlade system into a rack.

Chapter 4: System Modules

This chapter covers modules in the SuperBlade system. It also covers the CMM module and configuring double-wide bays.

Chapter 5: Power Supply Modules

This chapter covers the system power supplies and their installation.

Appendix A: System Specifications

This appendix provides a summary of system specifications.

Notes

Table of Contents

Chapter 1 Introduction	1-1
1-1 Overview.....	1-1
1-2 Quick Start Setup	1-1
1-3 SuperBlade Solution Systems.....	1-2
DataCenterBlade	1-2
OfficeBlade	1-3
Twin Blades.....	1-3
Software Mode Selection.....	1-3
1-4 Product Checklist of Typical Components.....	1-4
1-5 Blade Enclosure Features	1-5
Power.....	1-9
Middle Plane	1-9
LEDs	1-9
Enclosure Cooling.....	1-9
1-6 Power Supply Features.....	1-10
Power Supply Modules	1-10
Power Cord	1-10
Power Supply Failure.....	1-11
1-7 Special Design Features	1-11
Operating System Support.....	1-11
Remote Management	1-11
Computing Density/Power	1-11
High-Efficiency Power Supplies	1-11
1-8 Returning Merchandise for Service.....	1-12
1-9 Contacting Supermicro.....	1-13
Chapter 2 Standardized Warning Statements	2-1
2-1 About Standardized Warning Statements.....	2-1
Warning Definition.....	2-1
Installation Instructions	2-3
Circuit Breaker	2-4
Power Disconnection Warning.....	2-5
Equipment Installation.....	2-6
Restricted Area	2-7
Battery Handling	2-9

Redundant Power Supplies 2-10
Backplane Voltage 2-11
Comply with Local and National Electrical Codes..... 2-12
Product Disposal..... 2-13
Hot Swap Fan Warning 2-14
Power Cable and AC Adapter 2-15

Chapter 3 Setup and Installation..... 3-1

3-1 Overview 3-1
3-2 Unpacking the System 3-1
 Choosing a Setup Location 3-1
 Rack Precautions 3-2
 Server Precautions 3-2
 Rack Mounting Considerations 3-2
 Ambient Operating Temperature 3-2
 Reduced Airflow 3-2
 Mechanical Loading 3-2
 Circuit Overloading..... 3-3
 Reliable Ground 3-3
 Installing the System Into a Rack..... 3-3
 Rack Mounting Hardware 3-3
 Installation 3-4

Chapter 4 System Modules..... 4-1

4-1 Chassis Management Module..... 4-2
 Module Redundancy 4-4
 Master/Slave Modules..... 4-4
 SBM-CMM-001 or SBM-CMM-003 Module Installation 4-4
 BMB-CMM-002 Module Installation 4-5
 Configuring the CMM 4-7
 CMM Functions 4-10
 Local KVM..... 4-10
 Remote KVM over IP 4-10
 Remote Storage (Virtual Media)..... 4-10
 Serial Over LAN (SOL)..... 4-11
 Monitoring Functions..... 4-11
 Power Consumption Management..... 4-11
 CMM Switches and Buttons 4-12
 USB Switch 4-12
 Reset Button 4-12
 Firmware 4-12

Web-based Management Utility	4-13
Supported Browsers.....	4-13
Network Connection/Login	4-13
Address Defaults.....	4-13
Home Page	4-14
4-2 Double-Wide and Triple-Wide Modules.....	4-15
Setting up a Double-Wide Bay.....	4-15
Setting up a Triple Wide Bay.....	4-24
Chapter 5 Power Supply Modules	5-1
5-1 Power Supply Modules.....	5-1
Power Supply Failure.....	5-5
Installing a Power Supply.....	5-5
Removing a Power Supply.....	5-5
5-2 Redundant Power Supplies.....	5-7
5-3 Power Supply Fans.....	5-8
5-4 Power Components	5-9
Power Cord	5-9
Power Cord Tie and Clamp.....	5-10
Appendix A System Specifications	A-1
A-1 Enclosure Specifications.....	A-1
A-2 Environmental Specifications.....	A-2
A-3 Address Defaults.....	A-2
A-4 Power Supply Power Calculations.....	A-3

Notes

List of Figures

Figure 3-1. Positioning the Enclosure Template	3-4
Figure 3-2. Securing the Rails to the Rack	3-4
Figure 3-3. Attaching the Optional Handles	3-5
Figure 3-4. Enclosure Installed into Rack	3-6
Figure 4-1. Typical Blade System Module Configuration: Rear View	4-1
Figure 4-2. Chassis Management Module	4-3
Figure 4-3. Stand-off Screw Holes on Module Board.....	4-5
Figure 4-4. Mini-CMM Mounted on Module Board.....	4-6
Figure 4-5. Choose Internal Protocol	4-7
Figure 4-6. Manually Configure the IP Address	4-8
Figure 4-7. Changing Settings	4-9
Figure 4-8. USB Switch on Rear of CMM	4-12
Figure 4-9. Home Page.....	4-14
Figure 4-10. Horizontal Spacers for Single Bays	4-16
Figure 4-11. Modifying for a Double-Wide Module Bay (Steps 1 & 2)	4-17
Figure 4-12. Modifying for a Double-Wide Module Bay (Steps 3 & 4)	4-18
Figure 4-13. Modifying for an Upper Left Double-Wide Bay (Step 1).....	4-19
Figure 4-14. Modifying for an Upper Left Double-Wide Bay (Step 3).....	4-20
Figure 4-15. Modifying for an Upper Left Double-Wide Bay (Step 4).....	4-21
Figure 4-16. Modifying for an Upper Left Double-Wide Bay (Step 5).....	4-22
Figure 4-17. Modifying for an Upper Left Double-Wide Bay (Step 6).....	4-23
Figure 4-18. Modifying for a Triple Wide Bay (Step 1 & 2).....	4-24
Figure 4-19. Modifying for a Triple Wide Bay (Step 3 & 4).....	4-25
Figure 4-20. Modifying for a Triple Wide Bay (Step 5)	4-26
Figure 4-21. Modifying for a Triple Wide Bay (Step 6)	4-27
Figure 5-1. PWS-1K62-BR Power Supply.....	5-2
Figure 5-2. PWS-2K53-BR Power Supply.....	5-3
Figure 5-3. PWS-3K01-BR Power Supply.....	5-4
Figure 5-4. Power Supply Module.....	5-6
Figure 5-5. Blade Status Screen	5-7
Figure 5-6. Power Components	5-9
Figure 5-7. Power Cord Tie and Clamp Parts	5-10
Figure 5-8. Power Cord Tie and Clamp Assembly.....	5-11

Notes

List of Tables

Table 1-1. SuperBlade Enclosures	1-5
Table 1-2. Number of Network Modules that May Be Installed in each Enclosure.....	1-8
Table 4-1. Typical Blade System Module Configuration: Rear View.....	4-1
Table 4-2. CMM Module Interface.....	4-3
Table 4-3. CMM Module Features	4-3
Table 4-4. CMM Reset Settings	4-12
Table 4-5. Address Defaults.....	4-14
Table 4-6. Home Page Controls.....	4-14
Table 5-1. PWS-1K62-BR Power Supply Features.....	5-2
Table 5-2. PWS-2K53-BR Power Supply Features.....	5-3
Table 5-3. PWS-3K01-BR Power Supply Features.....	5-4
Table 5-4. Power Components	5-9
Table A-1. Enclosure Specification Features	A-1
Table A-2. Environmental Specification Features	A-2
Table A-3. Address Defaults	A-2
Table A-4. Power Supply: Power Calculations (PWS-3K01-BR)	A-3
Table A-5. Power Supply: Power Calculations (PWS-2K53-BR)	A-3
Table A-6. Power Supply: Power Calculations (PWS-1K62-BR)	A-4

Notes

Chapter 1

Introduction

1-1 Overview

The SuperBlade is a compact self-contained server that connects to a pre-cabled enclosure that provides power, cooling, management and networking functions. One enclosure can hold up to either ten or fourteen blade units, depending upon the blade enclosure used.

In this manual, “blade system” refers to the entire system (including the enclosure and blades units), “blade” or “blade unit” refers to a single blade module and “blade enclosure” is the unit that the blades, power supplies and modules are housed in.

Each blade unit is optimized to fit into either a specific ten-blade or fourteen-blade enclosure.

Please refer to our web site for information on operating systems that have been certified for use with the SuperBlade (www.supermicro.com/products/superblade/).

1-2 Quick Start Setup

This section covers how to quickly get your new SuperBlade system up and running. Follow the procedure below to quickly setup your SuperBlade system.

1. Unpack the components of your SuperBlade system and check the packing list for damaged or missing components.
2. Select a setup location for your system. See ["Choosing a Setup Location" on page 3-1](#) for details.
3. Setup any double-wide or triple-wide bays if you require any for double-wide or triple-wide modules in your system. See [Section 4-2: Double-Wide and Triple-Wide Modules on page 4-15](#) for details.
4. Mount the SuperBlade chassis in your server rack. See ["Installing the System Into a Rack" on page 3-3](#) for details.
5. Install the power supply modules into the rear of the SuperBlade chassis. See ["Installing a Power Supply" on page 5-5](#) for details.
6. Install the CMM module and any InfiniBand or Ethernet modules into the rear of the SuperBlade chassis.
 - a. For the CMM module, see ["SBM-CMM-001 or SBM-CMM-003 Module Installation" on page 4-4](#) for details.
 - b. For the InfiniBand and Ethernet modules, see ["SBM-CMM-001 or SBM-CMM-003 Module Installation" on page 4-4](#) and the *SuperBlade Network Modules User's Manual* on your system's CD-ROM.

- c. Attach keyboard, mouse and video connections to your CMM module. See "[Local KVM](#)" on page 4-10 for details.
 - d. Attach network connections for your InfiniBand or Ethernet modules. See the *SuperBlade Network Modules User's Manual* on your system's CD-ROM for details.
7. Setup your blade modules for use by doing the following:
- a. Open the module case lids of each blade module. See your purchased blade's user's manual on you system's CD-ROM for details.
 - b. Install memory into each module. See the the user's manual for your purchased blade module from your system's CD-ROM for details.
 - c. Close the module case lids when you have installed your memory for each blade module. See the the user's manual for your purchased blade module from your system's CD-ROM for details.
 - d. Install the hard disk drives into each module. See the the user's manual for your purchased blade module from your system's CD-ROM for details.
 - e. Install your blade modules into your SuperBlade chassis. See the the user's manual for your purchased blade module from your system's CD-ROM for details.
8. Connect the power cords for your SuperBlade system's power supply and plug them into your power source **ONLY** after you have installed and secured all system components.
9. Power up your SuperBlade system. Check to be sure all components are operating right and are not showing any fault LEDs or alarms in their operation.
10. Install your selected operating system for each blade module. See the the user's manual for your purchased blade module from your system's CD-ROM for details.
11. Download a BIOS update for each of your blade modules from the [Supermicro website](#).

1-3 SuperBlade Solution Systems

DatacenterBlade®, OfficeBlade® and TwinBlade® are three SuperBlade system product packages that use many of the same blades, modules and components as the standard SuperBlade system.

DataCenterBlade

The DatacenterBlade system is a blade and enclosure that is configured for data center and HPC applications. It has a performance and density optimized to achieve 1008 processing cores and 8TB memory, 252 2.5" SAS/SATA/SSD HDD storage per 42U standard rack. See <http://www.supermicro.com/products/SuperBlade/officeblade/> for the latest details on the Supermicro DatacenterBlade system.

OfficeBlade

The OfficeBlade system is a blade and enclosure optimized for small-medium business and personal HPC applications. With acoustically enhanced thermal and cooling technologies, the OfficeBlade system can operate at or below 50dB with 10 DP server blades. The OfficeBlade system is best used with Supermicro's CSE-RACK1U mini-rack cabinet. See <http://www.supermicro.com/products/SuperBlade/officeblade/> for the latest details on the Supermicro OfficeBlade system.

Some examples of blades that are suitable for use in Office Blade mode are:

- SBI-7125C-S3
- SBI-7125C-S3E
- SBI-7125C-T3

For Office Blade Mode, it is recommended that no more than two 80W Intel Xeon 5400/5200 series CPUs with 1333 FSB support be used in each blade module.

Twin Blades

Some blade modules for the SuperBlade system contain two (twin) nodes that allow the blade module to function as effectively two server systems. This allows an enclosure with these "twin" blades to function with a maximum compute capacity, density and efficiency of up to 2880 cores, 15TB memory and 240 2.5" SATA HDD or SSD drives in a 42U rack. See <http://www.supermicro.com/products/SuperBlade/TwinBlade/> for the latest details on the Supermicro TwinBlade system.

NOTE: Due to high power demands, a full enclosure of Twin-node blade modules in an enclosure requires that you install four PWS-2K53-BR 2500W power modules or higher to power them.

Software Mode Selection

Using the Web-based Management Utility, you can specify your SuperBlade system to use a different mode for quieter operation and lower fan speed. This is done by selecting a mode in the CMM OPERATION MODE section of the CMM STATUS screen. This screen allows you to specify your system to run in either Office Blade Mode (for quieter operation) or Enterprise Mode (for normal operation). See [Section 4-1: Chassis Management Module on page 4-2](#) for further details.

1-4 Product Checklist of Typical Components

- Blade Enclosure (x1): SBE-710E/Q, SBE-710Q-R90, SBE-720E, SBE-720D-R75 or SBE-720D-D50 (10-blade series); SBE-714D/E (14-blade series)
- Blade Unit (minimum of 2, 10 or 14 maximum): See the the Supermicro website (<http://www.supermicro.com/products/superblade/>) for a complete list of blades that can be mounted in your system.
- Power Supplies (x2): PWS-1K62-BR, PWS-2K01-BR or PWS-2K53-BR, PWS-3K01-BR
- CMM Module (x1): SBM-CMM-001 (Not compatible with 720E chassis enclosure), SBM-CMM-002 (Mini-CMM) and SBM-CMM-003
- KVM Cable (x1): CBL-0218L
- Dummy Blade Units: MCP-650-00004-0N (10-blade enclosure) or MCP-650-00005-0N (14-blade enclosure)
- Dummy Power Supplies: MCP-650-00001-0N
- Dummy CMM Modules: MCP-650-00002-0N
- Dummy GbE Switches: MCP-650-00003-0N

Optional components include:

- InfiniBand® Switch Module: SBM-IBS-001 or SBM-IBS-Q3618M, SBM-IBS-Q3616M or SBM-IBS-F3616M ("M" models support BMB-CMM-002 Mini-CMM module)
- InfiniBand Pass-through Module: SBM-IBP-D14
- Blade IPMI Add-on Card: AOC-SIMBL
- Mezzanine Cards (required for operation with the InfiniBand Switch): AOC-IBH-002, AOC-IBH-XDS, AOC-IBH-XDD, XOC-IBH-XQS and/or AOC-IBH-XQD
- AOC-XEH-iN2 Add-on Card (required for operation with the 10-Gbps Ethernet Pass-Through or 10-Gbps Ethernet Switch Modules)
- Ethernet Switches: SBM-GEM-001 (1-Gbps), SBM-GEM-005 (for SBE-720 series enclosures and with AOC-GEH-iP2 add-on card), SBM-GEM-X2C+ (1/10-Gbps), SBM-XEM-X10SM (10-Gbps), SBM-XEM-F8X4SM or SBM-GEM-X3S+
- Ethernet Pass Through Modules: SBM-GEM-002 (1-Gbps), SBM-GEP-T20 (1-Gbps) or SBM-XEM-002M (10-Gbps)
- Extra CMM Module for redundancy: SBM-CMM-001, BMB-CMM-002, SBM-CMM-003

Additional modules will periodically become available. Please refer to <http://www.supermicro.com/products/superblade> for the most current list of modules available for the SuperBlade.

Blade systems install into standard racks. Up to six 7U blade systems may be installed into a 19" industry standard 42U rack.

1-5 Blade Enclosure Features

Supermicro's blade enclosures are designed to house from 10 to 14 blade units. Each accommodates either two or more power supplies. The enclosure mid-plane allows the blade units to share certain functions such as power, cooling and networking. [Table 1-1](#) below describes the various enclosures, their components and modules. [Table 1-2](#) shows the number of each module that may be installed in the various enclosure models.

Please check the Supermicro website for the latest module and enclosure installation information at <http://www.supermicro.com/servers/blade/networking/matrix.cfm> for further details.

Table 1-1. SuperBlade Enclosures

Enclosure Model	Blade Module Capacity	Power Supply Options	Intel Blade Options	AMD Blade Options	Module Options
SBE-710E	10-blade Modules	1620W 2500W	SBI-7127RG-E SBI-7127R-S6 SBI-7127R-SH SBI-7126TG SBI-7126T-S6 SBI-7126T-SH SBI-7126T-T1E SBI-7126T-T1L SBI-7125B-T1 SBI-7125W-S6 SBI-7125C-S3E SBI-7125C-S3 SBI-7125C-T3	SBA-7142G-T4 SBA-7141A-T SBA-7141M-T SBA-7121M-T1	SBM-CMM-001 or BMB-CMM-002 (Mini-CMM) SBM-GEM-001, SBM-GEM-002 or SBM-GEM-X2C+ SBM-GEM-X3S+ SBM-IBS-001 SBM-IBP-D14 SBM-XEM-002M (See Note 2)
SBE-710Q	10-blade Modules	1620W 2500W 3000W	SBI-7127RG-E SBI-7126T-S6 SBI-7126T-SH SBI-7127RG SBI-7126TG SBI-7126T-S6 SBI-7126T-SH SBI-7126T-T1E SBI-7126T-T1L SBI-7125B-T1 SBI-7125W-S6 SBI-7125C-S3E SBI-7125C-S3 SBI-7125C-T3	SBA-7142G-T4 SBA-7141A-T SBA-7141M-T SBA-7121M-T1	SBM-GEM-X3S+ SBM-CMM-003 or BMB-CMM-002 (Mini-CMM) SBM-GEM-001, SBM-GEM-002 or SBM-GEM-X2C+ SBM-IBS-Q3616 or SBM-IBS-Q3616M SBM-XEM-X10SM (See Note 1)

Table 1-1. SuperBlade Enclosures (Continued)

Enclosure Model	Blade Module Capacity	Power Supply Options	Intel Blade Options	AMD Blade Options	Module Options
SBE-714D	14-blade Modules	1620W	SBI-7427R-S3 SBI-7427R-T3 SBI-7427R-SH SBI-7427R-S2L SBI-7426T-S3 SBI-7426T-T3 SBI-7426T-SH SBI-7425C-S3E SBI-7425C-S3 SBI-7425C-T3	NA	SBM-GEM-X3S+ SBM-CMM-001 SBM-GEM-001, SBM-GEM-002 or SBM-GEM-X2C+
SBE-714E	14-blade Modules	1620W	SBI-7427R-S3 SBI-7427R-T3 SBI-7427R-SH SBI-7427R-S2L SBI-7426T-S3 SBI-7426T-T3 SBI-7426T-SH SBI-7425C-S3E SBI-7425C-S3 SBI-7425C-T3	NA	SBM-GEM-X3S+ SBM-CMM-001 or BMB-CMM-002 (Mini-CMM) SBM-GEM-001, SBM-GEM-002 or SBM-GEM-X2C+ SBM-IBS-001 SBM-IBP-D14 SBM-XEM-002M (See Note 2)

Table 1-1. SuperBlade Enclosures (Continued)

Enclosure Model	Blade Module Capacity	Power Supply Options	Intel Blade Options	AMD Blade Options	Module Options
SBE-720D	10-blade Modules 20 nodes for TwinBlade	2500W (x2)	SBI-7227R-T2 SBI-7127R-S6 SBI-7127-SH SBI-7126TG SBI-7226T-T2 SBI-7126T-S6 SBI-7126T-SH SBI-7126T-T1E SBI-7126T-T1L SBI-7125B-T1 SBI-7125W-S6 SBI-7125C-S3E SBI-7125C-S3 SBI-7125C-T3	SBA-7222G-T2 SBA-7142G-T4 SBA-7141A-T SBA-7141M-T SBA-7121M-T1	SBM-GEM-X3S+ SBM-CMM-003 SBM-GEM-X2C+ SBM-GEP-T20
SBE-720E	10-blade Modules 20 nodes for TwinBlade	2500W (x4) or 3000W	SBI-7227R-T2 SBI-7127R-S6 SBI-7127-SH SBI-7127RG SBI-7126TG SBI-7226T-T2 SBI-7126T-S6 SBI-7126T-SH SBI-7126T-T1E SBI-7126T-T1L SBI-7125B-T1 SBI-7125W-S6 SBI-7125C-S3E SBI-7125C-S3 SBI-7125C-T3	SBA-7222G-T2 SBA-7142G-T4 SBA-7141A-T SBA-7141M-T SBA-7121M-T1	SBM-GEM-X3S+ BMB-CMM-002 (Mini-CMM) or SBM-CMM-003 SBM-GEM-X2C+ SBM-GEP-T20 SBM-IBS-Q3616 or SBM-IBS-Q3616M SBM-IBS-Q3618 or SBM-IBS-Q3618M SBM-XEM-X10SM (See Note 1) (See Note 3)

NOTE 1: When supporting the dual InfiniBand QDR and 10-Gb switch modules you must also use the BMB-CMM-002 Mini-CMM module.

NOTE 2: One InfiniBand DDR switch/pass-through module and one 10-Gb pass-thru module can be supported simultaneously with the BMB-CMM-002 Mini-CMM installed in the 10-Gb pass-thru module.

NOTE 3: When the SBM-GEP-T20 is installed, one SBM-GEM-X2C+ and one InfiniBand QDR switch or 10-Gb switch can also be supported.

NOTE 4: The SBE-720E and SBE-720D series enclosures support only one CMM module. When equipped with redundant QDR IB switches or 10 Gb Ethernet switches, one of the switches must have a BMB-CMM-002 Mini-CMM installed. The SBE-720E and SBE-720D series enclosures do not support the InfiniBand Pass-Through module.

Table 1-2. Number of Network Modules that May Be Installed in each Enclosure

Name (SKU)	SBE -720E	SBE -720D	SBE -710E	SBE -710Q	SBE -714E	SBE -714D
Max. CMM Modules supported	1	1	2	2	2	1
1G Ethernet Switch (SBM-GEM-001)			1 or 2	1 or 2	1 or 2	1
1G Ethernet Pass-Through (SBM-GEM-002)			1 or 2	1 or 2	1 or 2	1
1/10G Ethernet Switch (SBM-GEM-X2C+)	1 or 2	1 or 2	1 or 2	1 or 2	1 or 2	1
10G Ethernet Switch w/ option for Mini-CMM (SBM-XEM-X10SM)	1 or 2			1 or 2		
1G Ethernet Pass-Through (SBM-GEP-T20)	1	2				
10G Ethernet Pass-Through w/ option for Mini-CMM (SBM-XEM-002M)			1 or 2		1 or 2	
QDR 16UL/20DL InfiniBand Switch w/ option for Mini-CMM (SBM-IBS-Q3616M)	1 or 2			1 or 2		
QDR 16UL/20DL InfiniBand Switch (SBM-IBS-Q3616)	1			1		
QDR 18UL/18DL InfiniBand Switch w/ option for Mini-CMM (SBM-IBS-Q3618M)	1 or 2			1 or 2		
QDR 18UL/18DL InfiniBand Switch (SBM-IBS-Q3618)	1			1		
DDR InfiniBand Switch (SBM-IBS-001)			1		1	
DDR InfiniBand Pass-Through (SBM-IBP-D14)			1		1	

The following sections provide a general outline of the main features for all blade server enclosures.

Power

The typical blade enclosure features a 3000W, 2500W, 2000W, 1620W or 1400W power system composed of two active power supply modules. An alternate configuration (and required for a full 10 or 14-blade system) features a total of four power supply modules for redundancy. This power redundancy feature allows you to replace a failed power module while the backup module takes over to keep the system running. You must have either two or four power supply modules installed in the blade enclosure (four is recommended in a full system).

The Chassis Management Module assumes the worst case (maximum) power for any model of blade prior to applying power. If the power supplies cannot supply that amount of power, given the current load on the power supplies, then the CMM will not allow that unit to power up. After a blade is powered up, the blade's BIOS calculates the actual power load required by the blade based upon the installed devices and informs the CMM of its requirements. The CMM then adjust the remaining power for additional blades based upon the actual power used by the blades that are powered on.

Middle Plane

The middle plane connects the various capabilities of the blades, such as the Gigabit (GbE) switch(es) to Network Interface Controller(s), the Chassis Management Module (CMM) to the USB devices and the InfiniBand Switch to the Host Channel Adapters. These devices all connect to the middle plane through high density connectors that provide both signals and power. This type of configuration reduces the amount of system cabling and simplifies the task of setting up the system. It provides an alternative signals route to support redundant power, CMM, network and IPMI functions.

NOTE: Signaling information can NOT be physically routed from one blade to another.

LEDs

Two LEDs are located at the right top of the enclosure above the last or right most blade. The left LED provides Power Status information and the right LED is the Fault LED.

Enclosure Cooling

The cooling for the entire blade system is provided by the fans in the power supply modules. For example, the 2500W and 2000W power supply modules have four fans per module, whereas the 1600W and 1400W power supply modules have two fans per module. If a power supply fails, its fans will continue to operate to provide continuous cooling. For this reason, a failed power supply should remain installed in the enclosure until a replacement unit is ready.

NOTE: You must install dummy power supplies (MCP-650-00001-0N) in any open power supply slots in order to prevent air flow leaks that would reduce cooling efficiency in the blade system's enclosure.

For overheat problems, check that there are no obstructions (such as poorly routed cables), check that all fans are operating normally and make sure the ambient room temperature is not too warm (refer to [Section A-2: Environmental Specifications on page A-2](#) for the maximum operating temperature). You can also use either of the blade management software utilities to increase the fan speed and maximize system cooling.

In the event of a power overload, you will have to add additional power supply modules to take up the load. Otherwise, you will not be able to power up all the blade modules. The blade BIOS plus CMM firmware calculates the load to determine if the power supplies can adequately handle the total system configuration.

1-6 Power Supply Features

The SuperBlade enclosure comes standard with one CMM module and either two or four power supplies. Information on the power supplies is summarized below. See [Section 4-1: Chassis Management Module on page 4-2](#) for details on the CMM module and [Chapter 5](#) for details on the power supplies.

If you install only two power supplies in the enclosure, they should be installed in the lower rather than the upper power bays. The reason for this counter-intuitive installation is that the power supplies in the lower bays provide increased airflow across the memory modules within each blade module.

Power Supply Modules

Each power supply module has its own power cord. Four modules are required when the full complement of blade units are installed into an enclosure. An LED on the back of a power supply will be red when AC power is present and green when the power is on.

Supermicro's high-efficiency blade system power supplies deliver continuous redundant power up to 94% peak efficiency. Each power supply module includes a management module that monitors the power supplies and the power enclosure.

Power Cord

Each 3000W, 2500W or 2000W power supply module has a C-20 type socket (IEC-60320-C20) for AC power and the power cord must have a C-19 type connector (IEC-60320-C19) to connect to the power supply. Each 1620W power supply module has a C-14 type socket (IEC-60320-C14) for AC power and the power cord must have a C-13 type connector (IEC-60320-C13) to connect to the power supply.

WARNING: Please note that ONLY the recommended power cord or an equivalent 14 Gauge power cord should be used for the 1620W/1400W power supply. Typical C13/C14 cords are only 16 Gauge wiring and pose a fire hazard if they are used.

A plastic locking clip partially covering the socket was designed to prevent the power supply module from being removed with the power cord still connected.

Refer to [Appendix A](#) for power/amperage calculation tables. Refer to the [supermicro web site](#) for further details on power cords.

Power Supply Failure

If a power supply or a fan in a power supply fails, the system management software will notify you of the situation. In either case, you will need to replace the power supply module with another identical one. Please note that if a power supply fails, its fans will continue to operate to provide system cooling. For this reason, a failed power supply should remain installed in the enclosure until a replacement unit is ready.

See [Chapter 5](#) for the procedure on replacing power supplies.

1-7 Special Design Features

Supermicro's SuperBlade offers special design features, some of which no other blade server can duplicate. These features give you extraordinary flexibility in configuring a blade system for your own particular needs.

Operating System Support

Both Microsoft Windows, VMWare and Linux operating systems are supported by the SuperBlade. Furthermore, you may have different operating systems running on different blade units within the same blade enclosure.

Remote Management

The Chassis Management Module (CMM) can manage the whole enclosure and any individual blade module by switching around to it.

Using an optional SIMBL add-on card provides separate IPMI controls for any blade module that has one installed in it. If your application needs to manage individual blade units at the same time, just add a SIMBL add-on card to each blade module.

NOTE: Some Blade modules already have onboard BMC.

Computing Density/Power

Dual and quad core processors are supported in the blade module systems. Each SuperBlade mainboard supports two or four processors and up to 256 GB of main memory. This translates to a maximum potential of up to 40 processors and 2560 GB of memory per 7U enclosure or 240 processors and 15 TB of memory for a full 42U rack.

High-Efficiency Power Supplies

A reliable source of power is critical in server systems and even more so in a blade system, where up to fourteen systems (blades) share the same power source. SuperBlade power supplies have been designed to operate at up to 94% peak efficiency and provide redundancy. Using high-efficiency power supplies results in a measurable reduction in wasted energy consumption and generated heat.

1-8 Returning Merchandise for Service

A receipt or copy of your invoice marked with the date of purchase is required before any warranty service will be rendered. You can obtain service by calling your vendor for a Returned Merchandise Authorization (RMA) number. When returning to the manufacturer, the RMA number should be prominently displayed on the outside of the shipping carton, and mailed prepaid or hand-carried. Shipping and handling charges will be applied for all orders that must be mailed when service is complete.

This warranty only covers normal consumer use and does not cover damages incurred in shipping or from failure due to the alteration, misuse, abuse or improper maintenance of products.

During the warranty period, contact your distributor first for any product problems.

For faster service, RMA authorizations may be requested online at:

<http://www.supermicro.com/support/rma/>

1-9 Contacting Supermicro

Headquarters

Address: Super Micro Computer, Inc.
980 Rock Ave.
San Jose, CA 95131 U.S.A.

Tel: +1 (408) 503-8000

Fax: +1 (408) 503-8008

Email: marketing@supermicro.com (General Information)
support@supermicro.com (Technical Support)

Web Site: www.supermicro.com

Europe

Address: Super Micro Computer B.V.
Het Sterrenbeeld 28, 5215 ML
's-Hertogenbosch, The Netherlands

Tel: +31 (0) 73-6400390

Fax: +31 (0) 73-6416525

Email: sales@supermicro.nl (General Information)
support@supermicro.nl (Technical Support)
rma@supermicro.nl (Customer Support)

Asia-Pacific

Address: Super Micro Computer, Inc.
3F, No. 150, Jian 1st Rd.
Zhonghe Dist., New Taipei City 23511
Taiwan (R.O.C)

Tel: +886-(2) 8226-3990

Fax: +886-(2) 8226-3992

Web Site: www.supermicro.com.tw

Technical Support:

Email: support@supermicro.com.tw

Tel: +886-(2)-8226-3990

Notes

Chapter 2

Standardized Warning Statements

2-1 About Standardized Warning Statements

The following statements are industry standard warnings, provided to warn the user of situations which have the potential for bodily injury. Should you have questions or experience difficulty, contact Supermicro's Technical Support department for assistance. Only certified technicians should attempt to install or configure components.

Read this appendix in its entirety before installing or configuring components in the Supermicro chassis

These warnings may also be found on our web site at http://www.supermicro.com/about/policies/safety_information.cfm.

Warning Definition



Warning!

This warning symbol means danger. You are in a situation that could cause bodily injury. Before you work on any equipment, be aware of the hazards involved with electrical circuitry and be familiar with standard practices for preventing accidents.

警告の定義

この警告サインは危険を意味します。

人身事故につながる可能性がありますので、いずれの機器でも動作させる前に、電気回路に含まれる危険性に注意して、標準的な事故防止策に精通して下さい。

此警告符号代表危險。

您正处于可能受到严重伤害的工作环境中。在您使用设备开始工作之前，必须充分意识到触电的危险，并熟练掌握防止事故发生的标准工作程序。请根据每项警告结尾的声明号码找到此设备的安全性警告说明的翻译文本。

此警告符號代表危險。

您正處於可能身體可能會受損傷的工作環境中。在您使用任何設備之前，請注意觸電的危險，並且要熟悉預防事故發生的標準工作程序。請依照每一注意事項後的號碼找到相關的翻譯說明內容。

Warnung

WICHTIGE SICHERHEITSHINWEISE

Dieses Warnsymbol bedeutet Gefahr. Sie befinden sich in einer Situation, die zu Verletzungen führen kann. Machen Sie sich vor der Arbeit mit Geräten mit den Gefahren elektrischer Schaltungen und den üblichen Verfahren zur Vorbeugung vor Unfällen vertraut. Suchen Sie mit der am Ende jeder Warnung angegebenen Anweisungsnummer nach der jeweiligen Übersetzung in den übersetzten Sicherheitshinweisen, die zusammen mit diesem Gerät ausgeliefert wurden.

BEWAHREN SIE DIESE HINWEISE GUT AUF.

INSTRUCCIONES IMPORTANTES DE SEGURIDAD

Este símbolo de aviso indica peligro. Existe riesgo para su integridad física. Antes de manipular cualquier equipo, considere los riesgos de la corriente eléctrica y familiarícese con los procedimientos estándar de prevención de accidentes. Al final de cada advertencia encontrará el número que le ayudará a encontrar el texto traducido en el apartado de traducciones que acompaña a este dispositivo.

GUARDE ESTAS INSTRUCCIONES.

IMPORTANTES INFORMATIONS DE SÉCURITÉ

Ce symbole d'avertissement indique un danger. Vous vous trouvez dans une situation pouvant entraîner des blessures ou des dommages corporels. Avant de travailler sur un équipement, soyez conscient des dangers liés aux circuits électriques et familiarisez-vous avec les procédures couramment utilisées pour éviter les accidents. Pour prendre connaissance des traductions des avertissements figurant dans les consignes de sécurité traduites qui accompagnent cet appareil, référez-vous au numéro de l'instruction situé à la fin de chaque avertissement.

CONSERVEZ CES INFORMATIONS.

תקנתן הצהרות אזהרה

הצהרות הבאות הן אזהרות על פי תקני התעשייה, על מנת להזהיר את המשתמש מפני חבלה פיזית אפשרית. במידה ויש שאלות או היתקלות בבעיה כלשהי, יש ליצור קשר עם מחלקת תמיכה טכנית של סופרמיקרו. טכנאים מוסמכים בלבד רשאים להתקין או להגדיר את הרכיבים.

יש לקרוא את הנספח במלואו לפני התקנת או הגדרת הרכיבים במארזי סופרמיקרו.

تحذير! هذا الرمز يعني خطر انك في حالة يمكن أن تتسبب في اصابة جسدية .
قبل أن تعمل على أي معدات، كن على علم بالمخاطر الناجمة عن الدوائر
الكهربائية

وكن على دراية بالممارسات الوقائية لمنع وقوع أي حوادث
استخدم رقم البيان المنصوص في نهاية كل تحذير للعثور ترجمتها

안전을 위한 주의사항

경고!

이 경고 기호는 위험이 있음을 알려 줍니다. 작업자의 신체에 부상을 야기 할 수 있는 상태에 있게 됩니다. 모든 장비에 대한 작업을 수행하기 전에 전기회로와 관련된 위험 요소들을 확인하시고 사전에 사고를 방지할 수 있도록 표준 작업절차를 준수해 주시기 바랍니다.

해당 번역문을 찾기 위해 각 경고의 마지막 부분에 제공된 경고문 번호를 참조하십시오

BELANGRIJKE VEILIGHEIDSINSTRUCTIES

Dit waarschuwings symbool betekent gevaar. U verkeert in een situatie die lichamelijk letsel kan veroorzaken. Voordat u aan enige apparatuur gaat werken, dient u zich bewust te zijn van de bij een elektrische installatie betrokken risico's en dient u op de hoogte te zijn van de standaard procedures om ongelukken te voorkomen. Gebruik de nummers aan het eind van elke waarschuwing om deze te herleiden naar de desbetreffende locatie.

BEWAAR DEZE INSTRUCTIES

Installation Instructions



Warning!

Read the installation instructions before connecting the system to the power source.

設置手順書

システムを電源に接続する前に、設置手順書をお読み下さい。

警告

将此系统连接电源前，请先阅读安装说明。

警告

將系統與電源連接前，請先閱讀安裝說明。

Warnung

Vor dem Anschließen des Systems an die Stromquelle die Installationsanweisungen lesen.

¡Advertencia!

Lea las instrucciones de instalación antes de conectar el sistema a la red de alimentación.

Attention

Avant de brancher le système sur la source d'alimentation, consulter les directives d'installation.

יש לקרוא את הוראות התקנה לפני חיבור המערכת למקור מתח.

اقرأ إرشادات التركيب قبل توصيل النظام إلى مصدر للطاقة

시스템을 전원에 연결하기 전에 설치 안내를 읽어주십시오.

Waarschuwing

Raadpleeg de installatie-instructies voordat u het systeem op de voedingsbron aansluit.

Circuit Breaker



Warning!

This product relies on the building's installation for short-circuit (overcurrent) protection. Ensure that the protective device is rated not greater than: 250 V, 20 A.

サーキット・ブレーカー

この製品は、短絡（過電流）保護装置がある建物での設置を前提としています。

保護装置の定格が 250 V、20 A を超えないことを確認下さい。

警告

此产品的短路（过载电流）保护由建筑物的供电系统提供，确保短路保护设备的额定电流不大于 250V, 20A。

警告

此產品的短路（過載電流）保護由建築物的供電系統提供，確保短路保護設備的額定電流不大於 250V, 20A。

Warnung

Dieses Produkt ist darauf angewiesen, dass im Gebäude ein Kurzschluss- bzw. Überstromschutz installiert ist. Stellen Sie sicher, dass der Nennwert der Schutzvorrichtung nicht mehr als: 250 V, 20 A beträgt.

¡Advertencia!

Este equipo utiliza el sistema de protección contra cortocircuitos (o sobrecorrientes) del edificio. Asegúrese de que el dispositivo de protección no sea superior a: 250 V, 20 A.

Attention

Pour ce qui est de la protection contre les courts-circuits (surtension), ce produit dépend de l'installation électrique du local. Vérifiez que le courant nominal du dispositif de protection n'est pas supérieur à :250 V, 20 A.

מוצר זה מסתמך על הגנה המותקנת במבנים למניעת קצר חשמלי. יש לוודא כי המכשיר המגן מפני הקצר החשמלי הוא לא יותר מ-250 V, 20 A

هذا المنتج يعتمد على معدات الحماية من الدوائر القصيرة التي تم تثبيتها في
المبنى
تأكد من أن تقييم الجهاز الوقائي ليس أكثر من: 20A, 250V

경고 !

이 제품은 전원의 단락 (과전류) 방지에 대해서 전적으로 건물의 관련 설비에 의존합니다. 보호장치의 정격이 반드시 250V(볼트), 20A(암페어)를 초과하지 않도록 해야 합니다.

Waarschuwing

Dit product is afhankelijk van de kortsluitbeveiliging (overspanning) van uw elektrische installatie. Controleer of het beveiligde apparaat niet groter gedimensioneerd is dan 220V, 20A.

Power Disconnection Warning



Warning!

The system must be disconnected from all sources of power and the power cord removed from the power supply module(s) before accessing the chassis interior to install or remove system components.

電源切斷の警告

システムコンポーネントの取り付けまたは取り外しのために、シャーシー内部にアクセスするには、

システムの電源はすべてのソースから切斷され、電源コードは電源モジュールから取り外す必要があります。

警告

在你打开机箱并安装或移除内部器件前，必須將系統完全斷電，並移除電源線。

警告

在您打開機殼安裝或移除內部元件前，必須將系統完全斷電，並移除電源線。

Warnung

Das System muss von allen Quellen der Energie und vom Netzanschlusskabel getrennt sein, das von den Spg.Versorgungsteilmodulen entfernt wird, bevor es auf den Chassisinnenraum zurückgreift, um Systemsbestandteile anzubringen oder zu entfernen.

¡Advertencia!

El sistema debe ser disconnected de todas las fuentes de energía y del cable eléctrico quitado de los módulos de fuente de alimentación antes de tener acceso el interior del chasis para instalar o para quitar componentes de sistema.

Attention

Le système doit être débranché de toutes les sources de puissance ainsi que de son cordon d'alimentation secteur avant d'accéder à l'intérieur du châssis pour installer ou enlever des composants de système.

אזהרה מפני ניתוק חשמלי

!אזהרה!

יש לנתק את המערכת מכל מקורות החשמל ויש להסיר את כבל החשמלי מהספק לפני גישה לחלק הפנימי של המארז לצורך התקנת או הסרת רכיבים.

يجب فصل النظام من جميع مصادر الطاقة وإزالة سلك الكهرباء من وحدة امداد الطاقة قبل

الوصول إلى المناطق الداخلية للهيكल لتثبيت أو إزالة مكونات الجهاز

경고 !

시스템에 부품들을 장착하거나 제거하기 위해서는 새시 내부에 접근하기 전에 반드시 전원 공급장치로부터 연결되어있는 모든 전원과 전기코드를 분리해주어야 합니다.

Waarschuwing

Voordat u toegang neemt tot het binnenwerk van de behuizing voor het installeren of verwijderen van systeem onderdelen, dient u alle spanningsbronnen en alle stroomkabels aangesloten op de voeding(en) van de behuizing te verwijderen.

Equipment Installation



Warning!

Only trained and qualified personnel should be allowed to install, replace, or service this equipment.

機器の設置

トレーニングを受け認定された人だけがこの装置の設置、交換、またはサービスを許可されています。

警告

只有经过培训且具有资格的人员才能进行此设备的安装、更换和维修。

警告

只有經過受訓且具資格人員才可安裝、更換與維修此設備。

Warnung

Das Installieren, Ersetzen oder Bedienen dieser Ausrüstung sollte nur geschultem, qualifiziertem Personal gestattet werden.

¡Advertencia!

Solamente el personal calificado debe instalar, reemplazar o utilizar este equipo.

Attention

Il est vivement recommandé de confier l'installation, le remplacement et la maintenance de ces équipements à des personnels qualifiés et expérimentés.

אזהרה!

צוות מוסמך בלבד רשאי להתקין, להחליף את הציוד או לתת שירות עבור הציוד.

يجب أن يسمح فقط للموظفين المؤهلين والمدربين لتكيب واستبدال أو خدمة هذا الجهاز
경고!

훈련을 받고 공인된 기술자만이 이 장비의 설치, 교체 또는 서비스를 수행할 수 있습니다.

Waarschuwing

Deze apparatuur mag alleen worden geïnstalleerd, vervangen of hersteld door geschoold en gekwalificeerd personeel.

Restricted Area



Warning!

This unit is intended for installation in restricted access areas. A restricted access area can be accessed only through the use of a special tool, lock and key, or other means of security. (This warning does not apply to workstations).

アクセス制限区域

このユニットは、アクセス制限区域に設置されることを想定しています。

アクセス制限区域は、特別なツール、鍵と錠前、その他のセキュリティの手段を用いてのみ出入りが可能です。

警告

此部件应安装在限制进出的场所，限制进出的场所指只能通过使用特殊工具、锁和钥匙或其它安全手段进出的场所。

警告

此裝置僅限安裝於進出管制區域，進出管制區域係指僅能以特殊工具、鎖頭及鑰匙或其他安全方式才能進入的區域。

Warnung

Diese Einheit ist zur Installation in Bereichen mit beschränktem Zutritt vorgesehen. Der Zutritt zu derartigen Bereichen ist nur mit einem Spezialwerkzeug, Schloss und Schlüssel oder einer sonstigen Sicherheitsvorkehrung möglich.

¡Advertencia!

Esta unidad ha sido diseñada para instalación en áreas de acceso restringido. Sólo puede obtenerse acceso a una de estas áreas mediante la utilización de una herramienta especial, cerradura con llave u otro medio de seguridad.

Attention

Cet appareil doit être installée dans des zones d'accès réservés. L'accès à une zone d'accès réservé n'est possible qu'en utilisant un outil spécial, un mécanisme de verrouillage et une clé, ou tout autre moyen de sécurité.

אזור עם גישה מוגבלת

אזהרה!

יש להתקין את היחידה באזורים שיש בהם הגבלת גישה. הגישה ניתנת בעזרת כלי אבטחה בלבד (מפתח, מנעול וכד').

تم تخصيص هذه الوحدة لت تركيبها في مناطق محظورة .
يمكن الوصول إلى منطقة محظورة فقط من خلال استخدام أداة خاصة،
قفل ومفتاح أو أي وسيلة أخرى للأمان

경고!

이 장치는 접근이 제한된 구역에 설치하도록 되어있습니다. 특수도구, 잠금 장치 및 키, 또는 기타 보안 수단을 통해서만 접근 제한 구역에 들어갈 수 있습니다.

Waarschuwing

Dit apparaat is bedoeld voor installatie in gebieden met een beperkte toegang. Toegang tot dergelijke gebieden kunnen alleen verkregen worden door gebruik te maken van speciaal gereedschap, slot en sleutel of andere veiligheidsmaatregelen.

Battery Handling



Warning!

There is the danger of explosion if the battery is replaced incorrectly. Replace the battery only with the same or equivalent type recommended by the manufacturer. Dispose of used batteries according to the manufacturer's instructions.

電池の取り扱い

電池交換が正しく行われなかった場合、破裂の危険性があります。交換する電池はメーカーが推奨する型、または同等のものを使用下さい。使用済電池は製造元の指示に従って処分して下さい。

警告

電池更換不當會有爆炸危險。請只使用同類電池或製造商推薦的功能相當的電池更換原有電池。請按製造商的說明處理廢舊電池。

警告

電池更換不當會有爆炸危險。請使用製造商建議之相同或功能相當的電池更換原有電池。請按照製造商的說明指示處理廢棄舊電池。

Warnung

Bei Einsetzen einer falschen Batterie besteht Explosionsgefahr. Ersetzen Sie die Batterie nur durch den gleichen oder vom Hersteller empfohlenen Batterietyp. Entsorgen Sie die benutzten Batterien nach den Anweisungen des Herstellers.

Attention

Danger d'explosion si la pile n'est pas remplacée correctement. Ne la remplacer que par une pile de type semblable ou équivalent, recommandée par le fabricant. Jeter les piles usagées conformément aux instructions du fabricant.

¡Advertencia!

Existe peligro de explosión si la batería se reemplaza de manera incorrecta. Reemplazar la batería exclusivamente con el mismo tipo o el equivalente recomendado por el fabricante. Desechar las baterías gastadas según las instrucciones del fabricante.

אזהרה!

קיימת סכנת פיצוץ של הסוללה במידה והוחלפה בדרך לא תקינה. יש להחליף את הסוללה בסוג התואם מחברת יצרן מומלצת.

סילוק הסוללות המשומשות יש לבצע לפי הוראות היצרן.

هناك خطر من انفجار في حالة استبدال البطارية بطريقة غير صحيحة فعليك استبدال البطارية

فقط بنفس النوع أو ما يعادلها كما أوصت به الشركة المصنعة تخلص من البطاريات المستعملة وفقا لتعليمات الشركة الصانعة

경고!

배터리가 올바르게 교체되지 않으면 폭발의 위험이 있습니다. 기존 배터리와 동일하거나 제조사에서 권장하는 동등한 종류의 배터리로만 교체해야 합니다. 제조사의 안내에 따라 사용된 배터리를 처리하여 주십시오.

Waarschuwing

Er is ontplofingsgevaar indien de batterij verkeerd vervangen wordt. Vervang de batterij slechts met hetzelfde of een equivalent type die door de fabrikant aanbevolen wordt. Gebruikte batterijen dienen overeenkomstig fabrieksvoorschriften afgevoerd te worden.

Redundant Power Supplies



Warning!

This unit might have more than one power supply connection. All connections must be removed to de-energize the unit.

冗長電源裝置

このユニットは複数の電源装置が接続されている場合があります。

ユニットの電源を切るためには、すべての接続を取り外さなければなりません。

警告

此部件连接的电源可能不止一个，必须将所有电源断开才能停止给该部件供电。

警告

此裝置連接的電源可能不只一個，必須切斷所有電源才能停止對該裝置的供電。

Warnung

Dieses Gerät kann mehr als eine Stromzufuhr haben. Um sicherzustellen, dass der Einheit kein Strom zugeführt wird, müssen alle Verbindungen entfernt werden.

¡Advertencia!

Puede que esta unidad tenga más de una conexión para fuentes de alimentación. Para cortar por completo el suministro de energía, deben desconectarse todas las conexiones.

Attention

Cette unité peut avoir plus d'une connexion d'alimentation. Pour supprimer toute tension et tout courant électrique de l'unité, toutes les connexions d'alimentation doivent être débranchées.

אם קיים יותר מספק אחד

אזהרה!

ליחידה יש יותר מחיבור אחד של ספק. יש להסיר את כל החיבורים על מנת לרוקן את היחידה.

قد يكون لهذا الجهاز عدة اتصالات بوحدات امداد الطاقة.
يجب إزالة كافة الاتصالات لعزل الوحدة عن الكهرباء

경고 !

이 장치에는 한 개 이상의 전원 공급 단자가 연결되어 있을 수 있습니다. 이 장치에 전원을 차단하기 위해서는 모든 연결 단자를 제거해야만 합니다.

Waarschuwing

Deze eenheid kan meer dan één stroomtoevoeraansluiting bevatten. Alle aansluitingen dienen verwijderd te worden om het apparaat stroomloos te maken

Backplane Voltage



Warning!

Hazardous voltage or energy is present on the backplane when the system is operating. Use caution when servicing.

バックプレーンの電圧

システムの稼働中は危険な電圧または電力が、バックプレーン上にかかっています。

修理するには注意ください。

警告

当系统正在进行时，背板上有很危险的电压或能量，进行维修时务必小心。

警告

當系統正在進行時，背板上有危險的電壓或能量，進行維修時務必小心。

Warnung

Wenn das System in Betrieb ist, treten auf der Rückwandplatine gefährliche Spannungen oder Energien auf. Vorsicht bei der Wartung.

¡Advertencia!

Quando el sistema está en funcionamiento, el voltaje del plano trasero es peligroso. Tenga cuidado cuando lo revise.

Attention

Lorsque le système est en fonctionnement, des tensions électriques circulent sur le fond de panier. Prendre des précautions lors de la maintenance.

מתח בפנל האחורי

אזהרה !

קיימת סכנת מתח בפנל האחורי בזמן תפעול המערכת. יש להיזהר במהלך העבודה.

هناك خطر من التيار الكهربائي أو الطاقة الموجودة على اللوحة
عندما يكون النظام يعمل كن حذرا عند خدمة هذا الجهاز

경고 !

시스템이 동작 중일 때 후면판 (Backplane) 에는 위험한 전압이나 에너지가 발생 합니다. 서비스 작업 시 주의하십시오 .

Waarschuwing

Een gevaarlijke spanning of energie is aanwezig op de backplane wanneer het systeem in gebruik is. Voorzichtigheid is geboden tijdens het onderhoud.

Comply with Local and National Electrical Codes



Warning!

Installation of the equipment must comply with local and national electrical codes.

地方および国の電気規格に準拠

機器の取り付けはその地方および国の電気規格に準拠する必要があります。

警告

设备安装必须符合本地与本国电气法规。

警告

設備安裝必須符合本地與本國電氣法規。

Warnung

Die Installation der Geräte muss den Sicherheitsstandards entsprechen.

¡Advertencia!

La instalacion del equipo debe cumplir con las normas de electricidad locales y nacionales.

Attention

L'équipement doit être installé conformément aux normes électriques nationales et locales.

תיאום חוקי החשמל הארצי

אזהרה !

התקנת הציוד חייבת להיות תואמת לחוקי החשמל המקומיים והארציים.

تركيب المعدات الكهربائية يجب أن يمتثل للقوانين المحلية والوطنية المتعلقة
بالكهرباء

경고!

현 지역 및 국가의 전기 규정에 따라 장비를 설치해야 합니다.

Waarschuwing

Bij installatie van de apparatuur moet worden voldaan aan de lokale en nationale elektriciteitsvoorschriften.

Product Disposal



Warning!

Ultimate disposal of this product should be handled according to all national laws and regulations.

製品の廃棄

この製品を廃棄処分する場合、国の関係する全ての法律・条例に従い処理する必要があります。

警告

本产品的废弃处理应根据所有国家的法律和规章进行。

警告

本產品的廢棄處理應根據所有國家的法律和規章進行。

Warnung

Die Entsorgung dieses Produkts sollte gemäß allen Bestimmungen und Gesetzen des Landes erfolgen.

¡Advertencia!

Al deshacerse por completo de este producto debe seguir todas las leyes y reglamentos nacionales.

Attention

La mise au rebut ou le recyclage de ce produit sont généralement soumis à des lois et/ou directives de respect de l'environnement. Renseignez-vous auprès de l'organisme compétent.

סילוק המוצר

אזהרה!

סילוק סופי של מוצר זה חייב להיות בהתאם להנחיות וחוקי המדינה.

عند التخلص النهائي من هذا المنتج ينبغي التعامل معه وفقا لجميع القوانين واللوائح الوطنية

경고!

이 제품은 해당 국가의 관련 법규 및 규정에 따라 폐기되어야 합니다.

Waarschuwing

De uiteindelijke verwijdering van dit product dient te geschieden in overeenstemming met alle nationale wetten en reglementen.

Hot Swap Fan Warning



Warning!

The fans might still be turning when you remove the fan assembly from the chassis. Keep fingers, screwdrivers, and other objects away from the openings in the fan assembly's housing.

ファン・ホットスワップの警告

シャーシから冷却ファン装置を取り外した際、ファンがまだ回転している可能性があります。ファンの開口部に、指、ドライバー、およびその他のものを近づけないで下さい。

警告

当您从机架移除风扇装置，风扇可能仍在转动。小心不要将手指、螺丝起子和其他物品太靠近风扇

警告

當您從機架移除風扇裝置，風扇可能仍在轉動。小心不要將手指、螺絲起子和其他物品太靠近風扇。

Warnung

Die Lüfter drehen sich u. U. noch, wenn die Lüfterbaugruppe aus dem Chassis genommen wird. Halten Sie Finger, Schraubendreher und andere Gegenstände von den Öffnungen des Lüftergehäuses entfernt.

¡Advertencia!

Los ventiladores podran dar vuelta cuando usted quite ell montaje del ventilador del chasis. Mandtenga los dedos, los destornilladores y todos los objetos lejos de las aberturas del ventilador

Attention

Il est possible que les ventilateurs soient toujours en rotation lorsque vous retirerez le bloc ventilateur du châssis. Prenez garde à ce que doigts, tournevis et autres objets soient éloignés du logement du bloc ventilateur.

! אזהרה

כאשר מסירים את חלקי המאוורר מהמארו, יתכן והמאווררים עדיין עובדים. יש להרחיק למרחק בטוח את האצבעות וכלי עבודה שונים מהפתחים בתוך המאוורר

من الممكن أن المراوح لا تزال تدور عند إزالة كتلة المروحة من الهيكل يجب إبقاء الأصابع ومفكات البراغي وغيرها من الأشياء بعيدا عن الفتحات في كتلة المروحة.

경고 !

새시로부터 팬 조립품을 제거할 때 팬은 여전히 회전하고 있을 수 있습니다. 팬 조립품 외관의 열려있는 부분들로부터 손가락 및 스크류드라이버, 다른 물체들이 가까이 하지 않도록 배치해 주십시오.

Waarschuwing

Het is mogelijk dat de ventilator nog draait tijdens het verwijderen van het ventilatorsamenstel uit het chassis. Houd uw vingers, schroevendraaiers en eventuele andere voorwerpen uit de buurt van de openingen in de ventilatorbehuizing.

Power Cable and AC Adapter



Warning!

When installing the product, use the provided or designated connection cables, power cables and AC adaptors. Using any other cables and adaptors could cause a malfunction or a fire. Electrical Appliance and Material Safety Law prohibits the use of UL or CSA -certified cables (that have UL/CSA shown on the code) for any other electrical devices than products designated by Supermicro only.

電源コードと AC アダプター

製品を設置する場合、提供または指定された接続ケーブル、電源コードと AC アダプターを使用下さい。他のケーブルやアダプタを使用すると故障や火災の原因になることがあります。電気用品安全法は、UL または CSA 認定のケーブル (UL/CSE マークがコードに表記) を Supermicro が指定する製品以外に使用することを禁止しています。

警告

安装此产品时,请使用本身提供的或指定的连接线,电源线和电源适配器.使用其它线材或适配器可能会引起故障或火灾。除了 Supermicro 所指定的产品,电气用品和材料安全法律规定禁止使用未经 UL 或 CSA 认证的线材。(线材上会显示 UL/CSA 符号)。

警告

安裝此產品時,請使用本身提供的或指定的連接線,電源線和電源適配器.使用其它線材或適配器可能會引起故障或火災。除了 Supermicro 所指定的產品,電氣用品和材料安全法律規定禁止使用未經 UL 或 CSA 認證的線材。(線材上會顯示 UL/CSA 符號)。

Warnung

Bei der Installation des Produkts, die zur Verfügung gestellten oder benannt Anschlusskabel, Stromkabel und Netzteile. Verwendung anderer Kabel und Adapter kann zu einer Fehlfunktion oder ein Brand entstehen. Elektrische Geräte und Material Safety Law verbietet die Verwendung von UL-oder CSA-zertifizierte Kabel, UL oder CSA auf der Code für alle anderen elektrischen Geräte als Produkte von Supermicro nur bezeichnet gezeigt haben.

¡Advertencia!

Al instalar el producto, utilice los cables de conexión previstos o designados, los cables y adaptadores de CA. La utilización de otros cables y adaptadores podría ocasionar un mal funcionamiento o un incendio. Aparatos Eléctricos y la Ley de Seguridad del Material prohíbe el uso de UL o CSA cables certificados que tienen UL o CSA se muestra en el código de otros dispositivos eléctricos que los productos designados por Supermicro solamente.

Attention

Lors de l'installation du produit, utilisez les bables de connection fournis ou désigné. L'utilisation d'autres cables et adaptateurs peut provoquer un dysfonctionnement ou un incendie. Appareils électroménagers et de loi sur la sécurité Matériel interdit l'utilisation de UL ou CSA câbles certifiés qui ont UL ou CSA indiqué sur le code pour tous les autres appareils électriques que les produits désignés par Supermicro seulement.

חשמליים ומתאמי AC

אזהרה!

כאשר מתקינים את המוצר, יש להשתמש בכבלים, ספקים ומתאמים AC אשר נועדו וסופקו לשם כך. שימוש בכל כבל או מתאם אחר יכול לגרום לתקלה או קצר חשמלי. על פי חוקי שימוש במכשירי חשמל וחוקי בטיחות, קיים איסור להשתמש בכבלים המוסמכים ב- UL או ב- CSA (כשאר מופיע עליהם קוד של UL/CSA) עבור כל מוצר חשמלי אחר שלא צוין על ידי סופרקמיקרו בלבד.

عند تركيب الجهاز يجب استخدام كابلات التوصيل، والكابلات الكهربائية

ومحولات التيار المتردد

التي . أن استخدام أي كابلات ومحولات أخرى يتسبب في حدوث عطل أو حريق.

تم توفيرها لك مع المنتج

الأجهزة الكهربائية ومواد قانون السلامة يحظر استخدام الكابلات UL أو CSA

معتمدة من قبل

لأي أجهزة كهربائية أخرى غير المنتجات المعينة من قبل Supermicro

(التي تحمل علامة UL/CSA)

경고!

제품을 설치할 때에는 제공되거나 지정된 연결케이블과 전원케이블, AC 어댑터를 사용해야 합니다. 그 밖의 다른 케이블들이나 어댑터들은 고장 또는 화재의 원인이 될 수 있습니다. 전기용품안전법 (Electrical Appliance and Material Safety Law) 은 슈퍼마이크로에서 지정한 제품들 외에는 그 밖의 다른 전기 장치들을 위한 UL 또는 CSA 에서 인증한 케이블 (전선 위에 UL/CSA 가 표시) 들의 사용을 금지합니다.

Waarschuwing

Bij het installeren van het product, gebruik de meegeleverde of aangewezen kabels, stroomkabels en adapters. Het gebruik van andere kabels en adapters kan leiden tot een storing of een brand. Elektrisch apparaat en veiligheidsinformatiebladen wet verbiedt het gebruik van UL of CSA gecertificeerde kabels die UL of CSA die op de code voor andere elektrische apparaten dan de producten die door Supermicro alleen.

Notes

Chapter 3

Setup and Installation

3-1 Overview

This chapter provides a quick setup procedure for your SuperBlade. Following these steps in the order given should enable you to have the system operational within a minimum amount of time. This quick setup assumes that the processor(s) and memory have already been installed. If not, please turn to [Chapter 4](#) for details on installing specific components.

3-2 Unpacking the System

You should inspect the box the SuperBlade was shipped in and note if it was damaged in any way. If the server itself shows damage you should file a damage claim with the carrier who delivered it.

Decide on a suitable location for the rack unit that will hold the SuperBlade. It should be situated in a clean, dust-free area that is well ventilated. Avoid areas where heat, electrical noise and electromagnetic fields are generated. You will also need it placed near a grounded power outlet. Read the "[Rack Precautions](#)" and "[Server Precautions](#)" in the next section.

The box the SuperBlade was shipped in should include two sets of rail assemblies, two handles and the mounting screws you will need to install the system into the rack. Follow the steps in the order given to complete the installation process in a minimum amount of time. **Please read this section in its entirety before you begin the installation procedure outlined in the sections that follow.**

Choosing a Setup Location

The following are important considerations for choosing a setup location:

- Leave enough clearance in front of the rack to enable you to remove the blade units (~25 inches).
- Leave approximately **30 inches of clearance behind or to the rear of the rack** to allow for sufficient airflow and ease in servicing, as well as clearance for electrical power connections.
- This product is intended for installation only in a *Restricted Access Location* (dedicated equipment rooms, service closets and the like). This is because the SuperBlade enclosure does not provide any physical security measures.
- This product is not suitable for use with visual display work place devices according to §2 of the *German Ordinance for Work with Visual Display Units*.

WARNING: Please read the following important Warnings and Precautions!

Rack Precautions

The following are important precautions concerning rack setup:

- The enclosure unit is heavy and requires at least two people to lift it.
- Ensure that the leveling jacks on the bottom of the rack are fully extended to the floor with the full weight of the rack resting on them.
- In single rack installation, stabilizers should be attached to the rack.
- In multiple rack installations the racks frames should be grounded to the same earth ground as the electrical source for the power supplies by means of a grounding strap.

Server Precautions

The following are important precautions concerning server setup:

- Review the electrical and general safety precautions in [Chapter 2](#).
- Determine the placement of each component in the rack *before* you install the rails.
- Install the heaviest server components on the bottom of the rack first, and then work up.
- Use a regulating uninterruptible power supply (UPS) to protect the server from power surges, voltage spikes and to keep your system operating in case of a power failure.
- Allow the hot plug hard drives and power supply units to cool before touching them.
- Always keep the rack's front door and all panels and components on the servers closed when not servicing to maintain proper cooling.

Rack Mounting Considerations

Below are listed important considerations for rack mounting.

Ambient Operating Temperature

If installed in a closed or multi-unit rack assembly, the ambient operating temperature of the rack environment may be greater than the ambient temperature of the room. Therefore, consideration should be given to installing the equipment in an environment compatible with the manufacturer's maximum rated ambient temperature. Refer to Appendix E for operating temperature specifications.

Reduced Airflow

Equipment should be mounted into a rack so that the amount of airflow required for safe operation is not compromised.

Mechanical Loading

Equipment should be mounted into a rack so that a hazardous condition does not arise due to uneven mechanical loading.

Circuit Overloading

Consideration should be given to the connection of the equipment to the power supply circuitry and the effect that any possible overloading of circuits might have on over-current protection and power supply wiring. Appropriate consideration of equipment nameplate ratings should be used when addressing this concern. See the power calculation tables in [Appendix A](#).

Reliable Ground

A reliable ground must be maintained at all times. To ensure this, the rack itself should be grounded. Particular attention should be given to power supply connections other than the direct connections to the branch circuit (such as the use of power strips and so on).

NOTE: It is recommended that you seek the advice and assistance of a licensed electrician that can advise you on best practices for ensuring that the electrical supply and the rack are joined to a *Common Bonding Network*.

Professional documents on grounding techniques include:

- *ANSI/TIA-942 – Telecommunications Infrastructure Standard for Data Centers*
- *J-STD-607-A-2002 – Commercial Building Grounding (Earthing) and Bonding Requirements for Telecommunications*
- *IEEE Std 1100™-2005 (IEEE Emerald Book) – IEEE Recommended Practice for Powering and Grounding Electronic Equipment*

Installing the System Into a Rack

This section provides information on installing the SuperBlade into a rack. There are a variety of rack units on the market, meaning the procedure may differ slightly. Refer to the Enclosure Template that was included with the system for help.

Rack Mounting Hardware

The following is a list of rack mounting hardware you will need for rack setup and installation:

- Two rail assemblies (one for each side of the enclosure)
- Two handles
- Four roundhead screws for fastening the enclosure ears to the rack
- Eight flathead screws and washers for mounting the rails to the rack

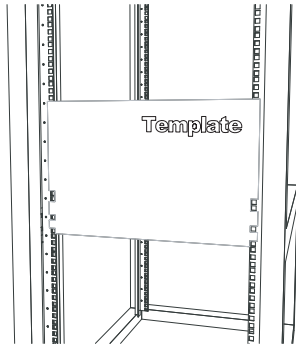
Installation

Use the procedure below for installing an enclosure in a rack.

Installing an enclosure:

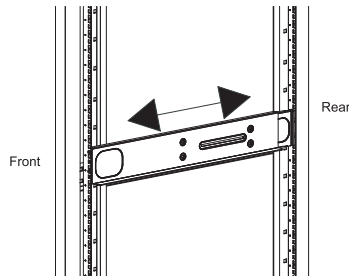
1. Decide where you want to place the blade enclosure into the rack (see ["Rack Mounting Considerations"](#) in the previous section).
2. Position the Enclosure Template at the front of the enclosure to determine the locations of the screws for the enclosure rails (see [Figure 3-1](#)).

Figure 3-1. Positioning the Enclosure Template



3. The two enclosure rail sections are screwed together to keep them immobile during shipping. Release these screws just enough to allow the rails to slide apart. Note the arrow on the rail, which indicates the end that attaches to the front of the rack.
4. Slide the rails apart far enough to match the depth of the rack. Position the rails with the template and secure the front of each to the front of the rack with two flathead screws, then secure the back of each rail to the rear of the rack with two flathead screws (see [Figure 3-2](#)). Note that the rails are left/right specific and very heavy.

Figure 3-2. Securing the Rails to the Rack



5. (Optional step) Add the front left and right handles to the enclosure using five screws to secure each handle. Install a thumbscrew through the bottom hole of each handle (see [Figure 3-3](#)).

NOTE: These handles are optional and need only be installed when mounting the system into a short rack. When mounting into a deep rack, they are unnecessary and regular screws should be used instead of thumbscrews.

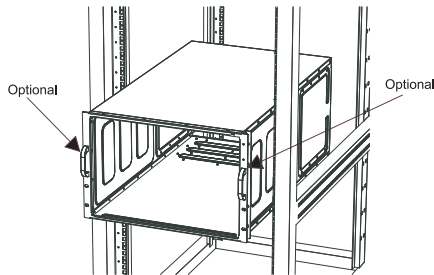
Be aware that these handles are not to be used for lifting the system, they are only to be used to slide the system within the rack.

6. With one person on either side (see the descriptive label on the side of the enclosure), lift the enclosure and slide it into the installed rails.

WARNING: Be sure that the enclosure is empty of all blades, power supplies, switches and management modules **BEFORE** lifting. These should be installed **AFTER** the enclosure is mounted in the rack. Injury and damage may occur if components are not removed from the rack prior to installation.

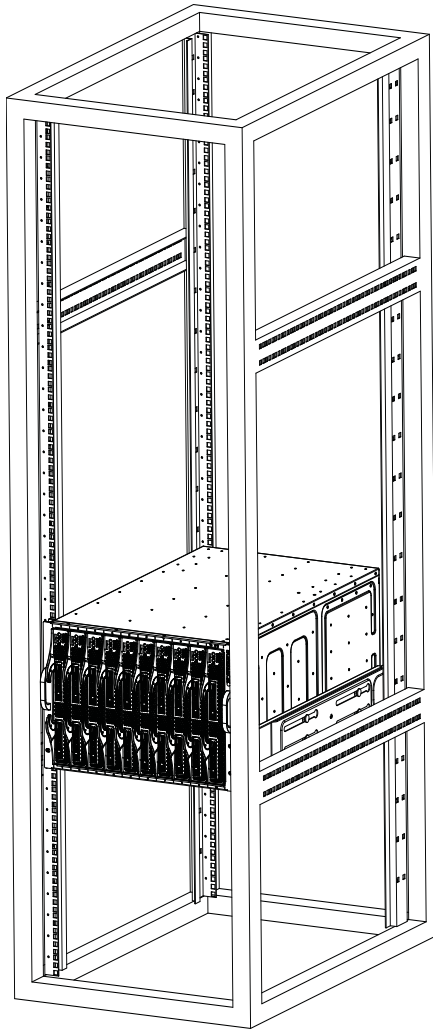
7. After pushing the enclosure all the way into the rack, use two roundhead screws on each side of the server to lock it into place.

Figure 3-3. Attaching the Optional Handles



8. The enclosure is now securely installed in the rack (see [Figure 3-4](#)).

Figure 3-4. Enclosure Installed into Rack



Chapter 4

System Modules

In addition to the blade units, your blade system comes equipped with one or more system modules. The modules fit into the rear of the enclosure into bays above and/or below the power supplies. This chapter describes the various blade modules that may be part of your blade system. Module configurations can be customized; you can install two of the same type module for redundancy purposes or you may omit a module altogether (except for the CMM, which is a required module). [Figure 4-1](#) shows a typical module configuration in a blade system. See [Chapter 5](#) for information on power supply modules.

WARNING: All module bays must be populated either with a module or a dummy module cover to maintain proper airflow.

Figure 4-1. Typical Blade System Module Configuration: Rear View

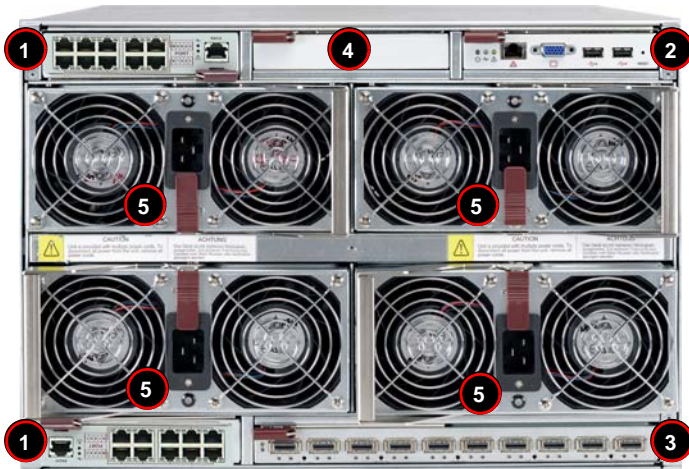


Table 4-1. Typical Blade System Module Configuration: Rear View

Item#	Description
1	This bay can hold any of the following: 1Gb Ethernet Switch Module, 1Gb Pass-through Module or a 1/10 Gb Ethernet Switch Module
2	CMM (Chassis Management Module) (x1 standard, x2 optional)
3	InfiniBand Switch (shown in double-wide bay), optional Ethernet 10Gb Pass-through Module, or a 10Gb Ethernet switch
4	Empty bay with dummy cover
5	Power Supply (x2 required, x4 optional depending upon system requirements)

NOTE: See the *SuperBlade Network Modules User's Manual* on your enclosed CD-ROM disc for details on all 1Gb Ethernet modules, 1Gb pass-through modules, 1/10Gb Ethernet modules, 10Gb Ethernet pass-through modules, 10 Gb Ethernet Switch module and InfiniBand modules for the SuperBlade system.

4-1 Chassis Management Module

The Chassis Management Module (CMM) ([Figure 4-2](#)) is a required module in a blade system. This “command” module communicates with the blade units, the power supplies and the blade switches. Used in conjunction with the Web Interface or IPMI View management software, the CMM provides administrator control over individual blade units, power supplies, cooling fans and networking switches and monitors onboard temperatures, power status, voltage levels and fan speeds. There are several models of CMM modules that may be used with your system. These include:

- **SBM-CMM-001** – This is the standard CMM module used with the SBE-710E, SBE-714D and SBE-714E blade enclosures. This CMM module can support up to 14 blade modules.
- **BMB-CMM-002** – Sometimes referred to as a “Mini-CMM”, this is an add-on card for chassis management that is installed in double-wide networking modules such as the 10 Gb Ethernet Pass-through Module, the 10 Gb Ethernet Switch, or InfiniBand QDR switches. It performs the standard CMM functions and is accessible through external ports on the associated networking module. Use of the BMB-CMM-002, where applicable, allows installation of redundant networking modules since it installs inside a networking module and does not need a separate bay for it in the blade enclosure. This Mini-CMM can support up to 20 blade modules.
- **SBM-CMM-003** – This CMM module is slightly taller in size than the SBM-CMM-001 module and is used only with the SBE-720E or SBE-710Q blade enclosures. It has the same features as the SBM-CMM-001 CMM module. This CMM module can support up to 20 blade modules.

The CMM provides a dedicated, local and remote KVM (keyboard/video/mouse) connection over an out of band TCP/IP Ethernet network during any server state (functioning, blue-screen, powered down, BIOS and so on). It also supports Virtual Media (VM) redirection for CD, floppy and USB mass storage devices and configures such information as the switch IP addresses. A summary of CMM features is shown in [Table 4-3](#).

NOTE: The SBM-CMM-002 is accessible through a high-density connector in the back of the pass-through module or InfiniBand module it is installed in.

Figure 4-2. Chassis Management Module

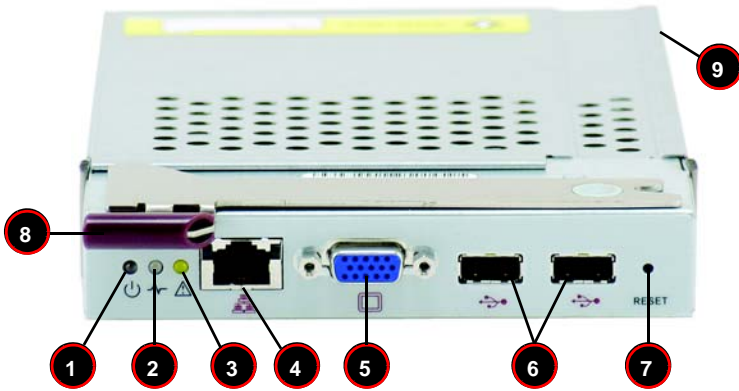


Table 4-2. CMM Module Interface

Item#	Description
1	Power LED
2	Heartbeat LED
3	Fault LED
4	Ethernet Port
5	VGA (Monitor) Port
6	USB Ports
7	Reset Button
8	Module Release Handle
9	USB 2.0/1.1 Switch (accessed at back of module, see Figure 4-8)

Table 4-3. CMM Module Features

Feature	Description
Management Capabilities	Can manage 10 to 20 blade units, network modules and 4 power supplies
Ports	One Ethernet port, one VGA port and two USB ports
Basic Functions Supported	Local KVM, remote KVM, remote storage, Serial-over-LAN (SOL), blade monitoring and control
System Management	System management interface provided via dedicated LAN
Power Consumption	Approximately 20W
Operating System	Firmware (upgradable)

Module Redundancy

A blade system must have one CMM and may have two for redundancy. Since the CMM uses its own processor, all monitoring and control functions are carried out regardless of the operation or power status of the blade units. CMM modules can only be installed in the upper and/or lower right module bays. Twin-node blade module chassis enclosures can only accommodate one CMM module.

The redundancy feature is automatic when two CMM modules have been installed into a blade system.

Master/Slave Modules

When a blade system has two CMM modules, they are assigned a master/slave status. This is done automatically according to the following criteria:

Determining Master/Slave status:

1. The CMM installed in the upper bay will be the master, however...
2. If the master CMM is powered down or removed (or is being reset by its user), the second (slave) CMM module will then immediately be assigned as the master.

NOTE: The Slave CMM keeps the same log/status as the Master CMM.

SBM-CMM-001 or SBM-CMM-003 Module Installation

Use this procedure to install the SBM-CMM-001 or SBM-CMM-003 CMM modules to the SuperBlade chassis. Make sure the cover to the module has been installed before proceeding. Follow the anti-static precautions described in [Chapter 2](#).

Installing the Module:

1. Remove the dummy cover from the bay you want to place the module in.
2. Place the module's release handle in the open position.
3. Slide the module into the module bay until it stops.
4. Push the release handle to the closed position.
5. After the module has been installed and the handle locked, it will turn on and a POST test will run to verify it is working properly.

Removing the Module:

1. Pull out the release handle to the open position.
2. Pull the module out of the bay.
3. Replace immediately with another module or with a dummy module cover to maintain airflow integrity.

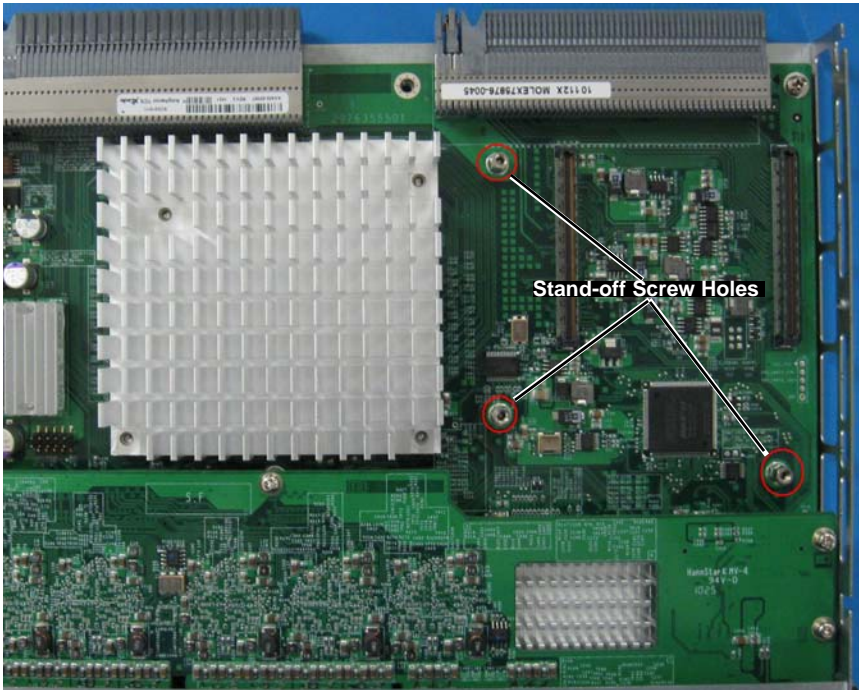
BMB-CMM-002 Module Installation

Use this procedure to install the BMB-CMM-002 Mini-CMM to the 10 Gb Ethernet Pass-through Module, the 10 Gb Ethernet Switch or an InfiniBand QDR switch. Follow the anti-static precautions described in [Chapter 2](#).

Installing the Add-on Card

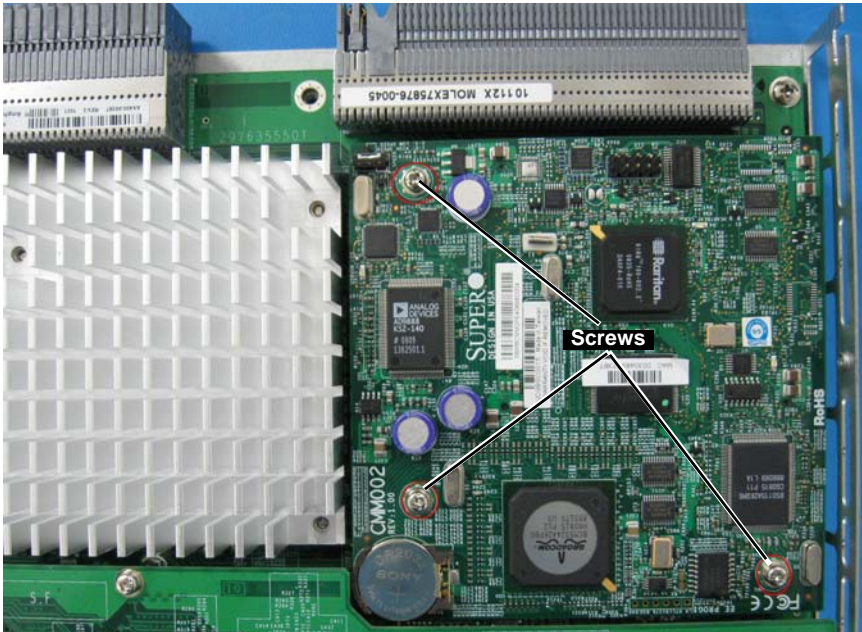
1. Remove the switch/module's top cover.
2. Align the Mini-CMM mounting holes with the stand off screw holes on the switch board module and insert the Mini CMM ([Figure 4-3](#)).

Figure 4-3. Stand-off Screw Holes on Module Board



3. Fasten the screws to secure the Mini-CMM (Figure 4-4).

Figure 4-4. Mini-CMM Mounted on Module Board



4. Replace and re-secure the switch/module's cover.

Removing the Add-on Card

1. Remove the switch/module's top cover.
2. Unscrew the Mini-CMM from its mountings in the switch/module and remove it.
3. Replace and re-secure the switch/module's cover.

Configuring the CMM

To access/configure the CMM, you first have to configure the IP settings of the CMM depending on you network environment. The below procedure for this configuration just serves as a reference for getting the CMM setup. If your system has Linux OS, please follow similar instructions to get the CMM setup.

Requirements are:

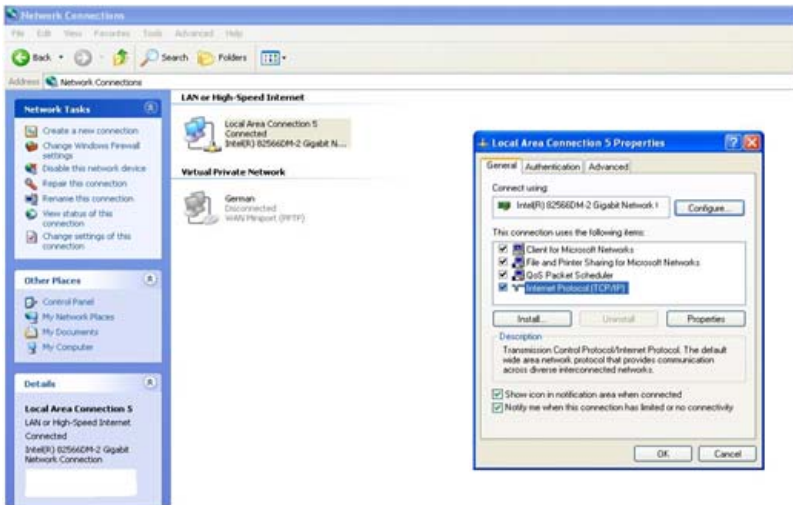
- Computer system with LAN (RJ45) port
- RJ -45 Ethernet cable

The default IP of the CMM is **192.168.100.100**. Configure the Computer system (connected through Ethernet-LAN to the CMM) to the same address range (for example 192.168.100.101).

Configuring the CMM in Windows OS:

1. Go to START → CONTROL PANEL → NETWORK CONNECTIONS
2. Right-click on **LAN** to view properties.
3. Choose “Internet Protocol (TCP/IP)” under the GENERAL tab and click on PROPERTIES (see [Figure 4-5](#)).

Figure 4-5. Choose Internal Protocol

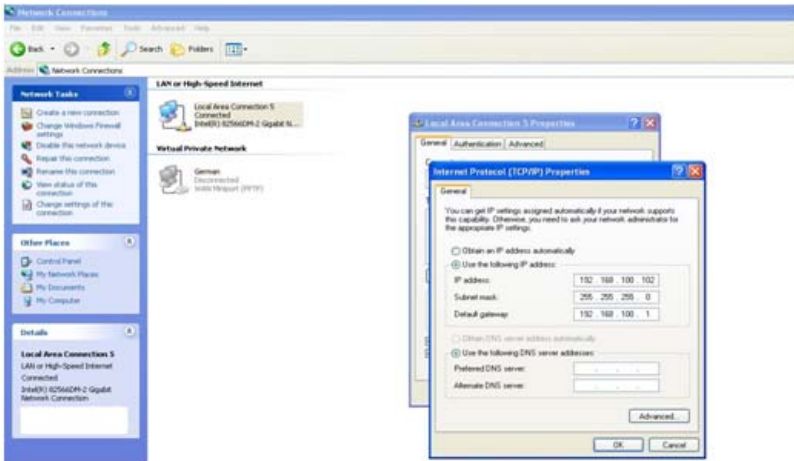


4. Manually configure the IP address of the computer system to be in the same address range as the CMM (see [Figure 4-6](#)).

Example:

- IP address: 192.168.100.101
- Subnet Mask: 255.255.255.0
- Default Gateway: 192.168.100.1

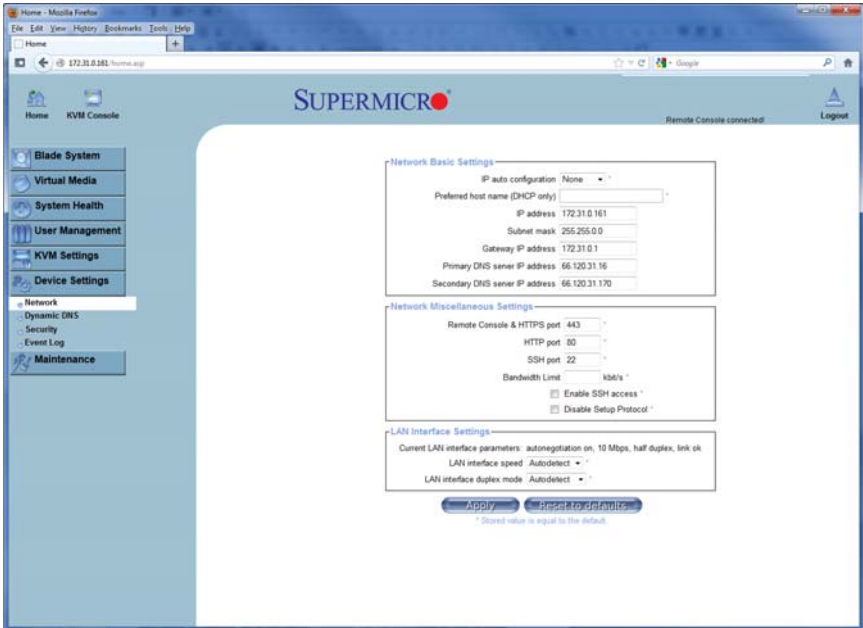
Figure 4-6. Manually Configure the IP Address



5. Once the IP address for the computer system is configured, the CMM can be accessed through the web browser by entering the default IP address **192.168.100.100** of the CMM into the browser's address bar.

- Now, the IP address, subnet mask and default gateway of the CMM can be changed according to the network environment (see Figure 4-7). Please refer to the *Web-based Management Utility User's Manual* on your system's CD-ROM for more information.

Figure 4-7. Changing Settings



WARNING: Don't change any other setting, unless you are familiar with it.

CMM Functions

The following sections describe local functions and remote functions of the CMM. With only minor exceptions, all of the remote functions can be performed by one of three mechanisms: web-based access to the CMM module, access to the CMM using *IPMIview*, a client tool implemented in Java, or via *IPMItool* commands (DOS commands or shell scripted commands).

When the web based browser is used, the CMM acts as a web server, requiring a higher bandwidth connection to the CMM. If there are any bandwidth constraints, IPMI will provide a superior experience. Additionally, since graphical updates are provided by client-side Java, IPMIview can also be a superior user experience.

IPMItool on the other hand can provide the ability to issue similar/identical commands to many SuperBlade enclosures/CMM's to manage all of them in a similar way.

In addition to accessing the SuperBlade capabilities through CMM, they can also be accessed directly on a blade by blade basis if the blades are equipped with SIMBL to provide IPMI control of each individual blade.

Local KVM

KVM stands for Keyboard/Video/Mouse. With KVM, a user can control multiple blades with a single keyboard/video/mouse setup. The maximum video resolution the KVM can support is 1280 x 1024 @ 60 Hz.

To Use: Connect your keyboard, mouse and monitor to the USB and VGA connectors on the CMM module, then push the KVM button on the control panel of the blade module you wish to access. The KVM LED on the blade will then illuminate and you can interface directly with that blade. To access a different blade module, simply push the KVM button on that blade's control panel.

Remote KVM over IP

Remote KVM over IP is independent from local KVM (although local KVM can operate in parallel with Remote KVM). Remote KVM encrypts all communication between the remote user and the CMM.

To Use: Remote KVM over IP is initiated with the management software (IPMI View or Web-based utility). Attach the LAN cable to the LAN port on the CMM module then refer to "[Web-based Management Utility](#)" on page 4-13 to login and use either utility.

Remote Storage (Virtual Media)

The Remote Storage function allows the user to connect to a remote storage device (such as a floppy, hard disk, CD-ROM or USB storage device) and access the device as if it were local. This can be used not only to read and write to remote storage devices but to load an operating system from a remote drive.

Serial Over LAN (SOL)

Serial Over LAN allows you to redirect the input and output of a serial port via IPMI in order to manage blade modules from a remote location.

To Use: Serial Over LAN can be activated via the Web-based Management utility. See the *Web-based Management Utility User's Manual* on your system's CD-ROM for the procedure to initiate SOL.

Monitoring Functions

Used in conjunction with IPMI or the Web-based Management utility, the CMM module can monitor and provide information on the hardware health of the blade modules and the system as a whole. In addition to the monitoring functions, you can remotely power on, power off or reboot a system.

Health information includes:

- Temperature levels
- Fan speeds
- Voltage levels
- Power status

Power Consumption Management

The CMM module's firmware can also control all power on/off activity in the whole blade system. This is done by using the Power button, via a SIMBL add-on card, onboard BMC or from any other use of remote management software.

Once a blade module is installed in the enclosure the installed CMM immediately receives information on the rated Max Power Consumption value of the new blade module. The CMM then calculates whether there is enough power for this new blade module by comparing the Max Power Consumption value of the new blade module with the calculated Remaining Power value of the system.

If there is enough power, the CMM will power on the blade. However if there is not enough power in the blade system, then the new blade module is not powered on and the front panel LED on the enclosure will blink.

After the blade is powered on, the CMM then collects the actual power consumption of this individual blade and updates the calculated Remaining Power value for the system.

The CMM also reserves power for all the networking and chassis management modules installed on the system.

NOTE: Blade modules with a SIMBL add-on card installed or onboard BMC in them provide individual IPMI for each blade unit. It communicates with the CMM for remote web or IPMI View access.

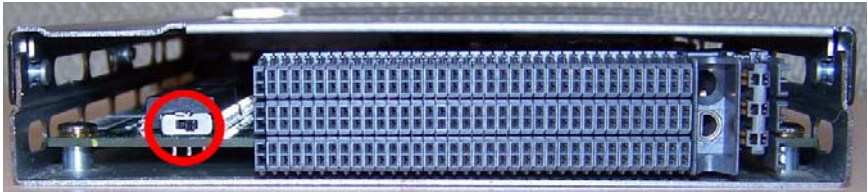
WARNING: One CMM module must be running to control the power systems and prevent overloading.

CMM Switches and Buttons

The various switches and buttons found on the CMM are described below.

USB Switch

Figure 4-8. USB Switch on Rear of CMM



The USB ports on the CMM can function in either 2.0 or 1.1 mode (the default is 1.1). A switch located on the PCB at the back of the CMM module is used to change the USB mode (see [Figure 4-8](#)).

To access the switch, you need to remove the CMM from the enclosure. Pull the CMM out and locate the switch near the large gray connector. The settings are silk screened on the PCB. After setting the switch, insert the CMM module back into its bay.

Reset Button

The Reset button located on the front of the CMM module is used to reset the following software settings to their defaults:

Table 4-4. CMM Reset Settings

Software Setting	Default
User Name and Password	Reset to ADMIN and ADMIN (case sensitive)
IP Address	Reset to 192.168.100.100
Gateway Address	Reset to 0.0.0.0
Subnet Mask	Reset to 255.255.255.0

To reset the CMM to factory defaults, press and hold the Reset button for five seconds.

Firmware

The firmware for the CMM switch resides in the module. This firmware can be updated with the web-based management utility.

Within the utility, go to the MAINTENANCE > UPDATE FIRMWARE screen in the Web-based Management Utility. Here you can enter the name of the firmware you want to update or click on BROWSE to select the firmware file. Finish by clicking the UPLOAD button.

NOTE: This process is not reversible once the firmware is updated, so proceed with caution. It might take a few minutes to complete this procedure.

Web-based Management Utility

System management may be performed with either of three software packages: *IPMIview*, *SMCIPMItool* or a *Web-based Management Utility*. Any of these utilities are designed to provide an administrator with a comprehensive set of functions and monitored data to keep tabs on the system and perform management activities.

The Web-based Management Utility is a web-based interface that consolidates and simplifies system management for Supermicro SuperBlade systems. The Web-based Management Utility aggregates and displays data from the CMM module.

NOTE: Full documentation on the Web-based Management Utility may be found on the CD-ROM included with your system.

The Web-based Management Utility provides the following key management features:

- Enables IT administrators to view in-depth hardware configuration and status information using a single intuitive interface.
- Provides an OS-independent, remote graphical console.
- Allows remote users to map local media (floppy, CD-ROM, removable disks and hard drives) or ISO images on a shared network drive to a blade server.

Supported Browsers

The following browsers have been tested for use with the Web-based Management Utility. It is recommended that you use the most current revision of the browser you choose. The minimum browser revisions supported by the Web-based Management Utility are shown below:

- Internet Explorer 7
- Firefox 2.0.0.7
- Netscape 9.03b

Network Connection/Login

To log into the Web-based Management Utility:

1. Launch a web browser.
2. In the address field of the browser, enter the IP address that you assigned to the Chassis Management Module and hit the <ENTER> key.
3. When the browser makes contact with Supermicro's Chassis Management Module, enter your *username* and *password*, then click LOGIN.
4. The WEB-BASED MANAGEMENT UTILITY HOME PAGE will then display as shown in [Figure 4-9](#).

Address Defaults

[Table 4-5](#) shows the default addresses that are initially set for the CMM. Afterwards, you can change these values within the program (see the *Web-based Management Utility User's Manual* on your system's enclosed CD-ROM for more details).

Table 4-5. Address Defaults

Default	Description
Default IP Address	192.168.100.100
Default Gateway Address	0.0.0.0
Default Subnet Mask	255.255.255.0
Default username	ADMIN
Default password	ADMIN

Home Page

Figure 4-9 and Table 4-6 respectively display the WEB-BASED MANAGEMENT UTILITY HOME PAGE and its controls.

Figure 4-9. Home Page

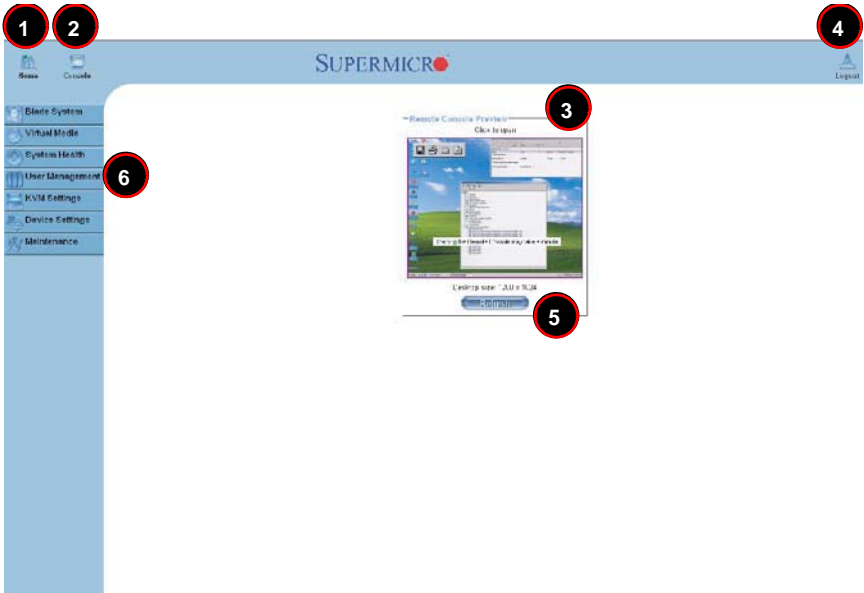


Table 4-6. Home Page Controls

Item	Description
1	Home: Click this icon to return to the Home Page.
2	Console: Click this icon to open the Remote Console Screen. (KVM must first be initialized either with the KVM button or via management software).
3	Remote Console Screen: The active screen from the remote console is displayed here. Clicking on this window also accesses the remote console.

Table 4-6. Home Page Controls (Continued)

Item	Description
4	Logout: Click on this icon to log out.
5	Refresh: Click on this icon to refresh the remote console preview screen.
6	Main Menu Icons: Used to initiate the various functions in the Web-based Management Utility.

NOTE: For more information on the Web-based Management Utility, see the *Web-based Management Utility User's Manual* on the CD-ROM included with your SuperBlade system.

4-2 Double-Wide and Triple-Wide Modules

Most modules in the SuperBlade fit into single-wide bays. The InfiniBand module and some other modules however (such as the 10GbE Pass-through module and 10 Gb Switch Module), require a double-wide bay. Some need a triple-wide bay (such as the SBM-IBP-D14 InfiniBand Pass-through Module) that are created by combining three bays. The enclosure's module bays are designed to be easily modified from single to double-wide/triple-wide width by following the procedures below.

Setting up a Double-Wide Bay

Some modules require that you set up a double-wide bay on the right side while some modules (such as the SBM-GEP-T20) require that you modify the enclosure to support double-wide modules in an upper left module bay. Use the procedures below to modify the enclosure for double-wide bays.

Modifying an Enclosure's Module Bays for Right Side Double-wide Modules

1. Remove the four screws that secure the inner enclosure to the main enclosure. Slide the inner enclosure outward, depressing the locking tabs on both sides to pull it completely out.
2. Remove any single-wide modules that are occupying the bays you wish to modify to a double-wide bay.
3. In the module bay you wish to expand to double-wide, remove the two screws that secure the center support to the inner enclosure then take out the center support. See [Figure 4-11](#), [Step 1](#) for details.
4. Remove the two screws from the underside of each of the two horizontal spacers (as shown in [Figure 4-10](#)). See [Figure 4-11](#), [Step 2](#) for details.
5. Using four screws, install the long horizontal spacer to the same space where the two short spacers were removed. See [Figure 4-12](#), [Step 3](#) for details.
6. You can now install a double-wide module into the bay. See [Figure 4-12](#), [Step 4](#) for details.

NOTE: This procedure describes modifying two right most single-wide bays located at the top of the inner enclosure. The same procedure applies to the two right most single bays located at the bottom of the enclosure, but note that the horizontal spacers in the bottom bays use a guide pin and are not interchangeable with the upper bay spacers (see [Figure 4-10](#) for details). Modules in the upper left hand bays will have their release handles on the bottom, while all modules in the lower bays will have their release handles on the top. *Placing modules in an “upside-down” orientation in the upper-left corner (only) does not affect their operation.*

NOTE: Unless it is capable of supporting the mini-CMM, only one double-wide module can be installed in an enclosure since each enclosure requires at least one CMM module. The bottom location is recommended. If using the AOC-IBH-002, AOC-IBH-XQS or AOC-IBH-XDS single-port InfiniBand mezzanine card, the InfiniBand switch *MUST* be installed in the bottom location.

Figure 4-10. Horizontal Spacers for Single Bays



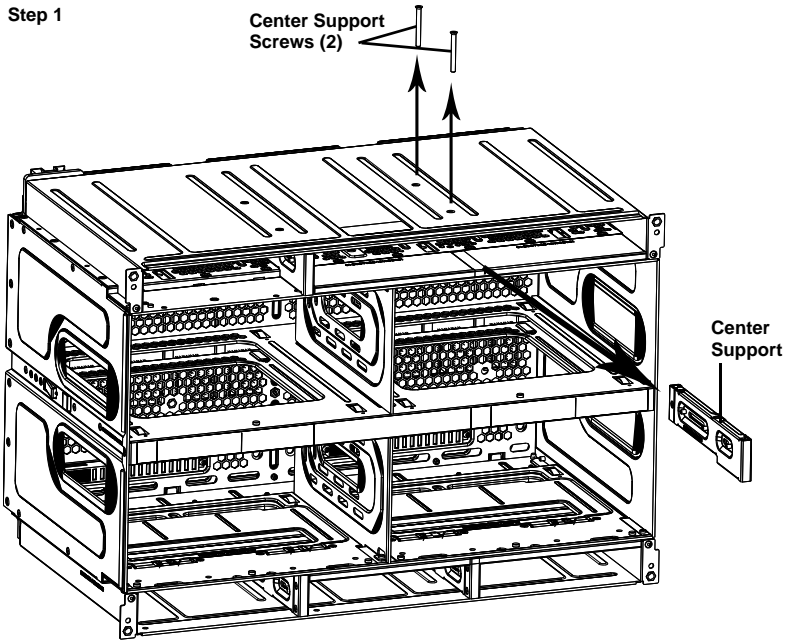
MCP-560-00012-1N (for top bay)



MCP-560-00009-1N (for bottom bay)

Figure 4-11. Modifying for a Double-Wide Module Bay (Steps 1 & 2)

Step 1



Step 2

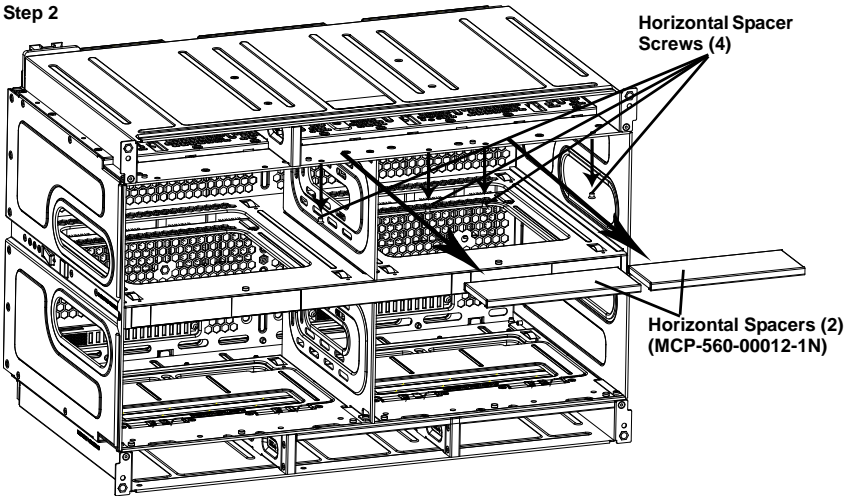
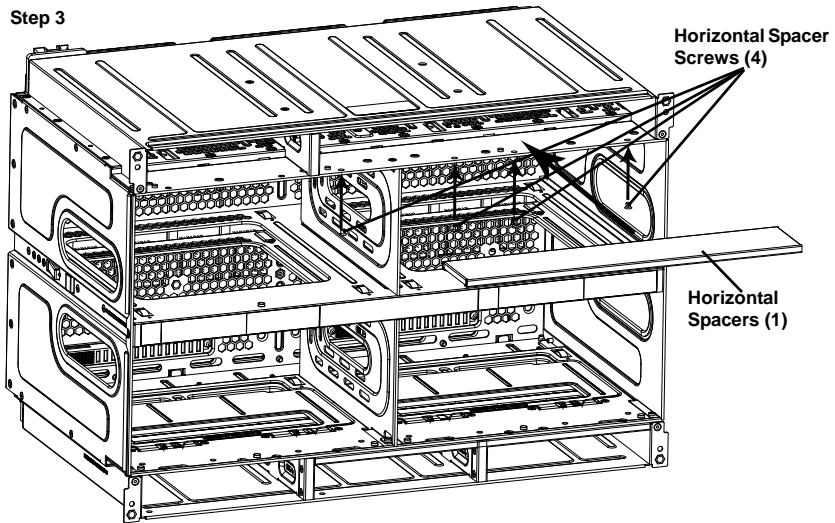
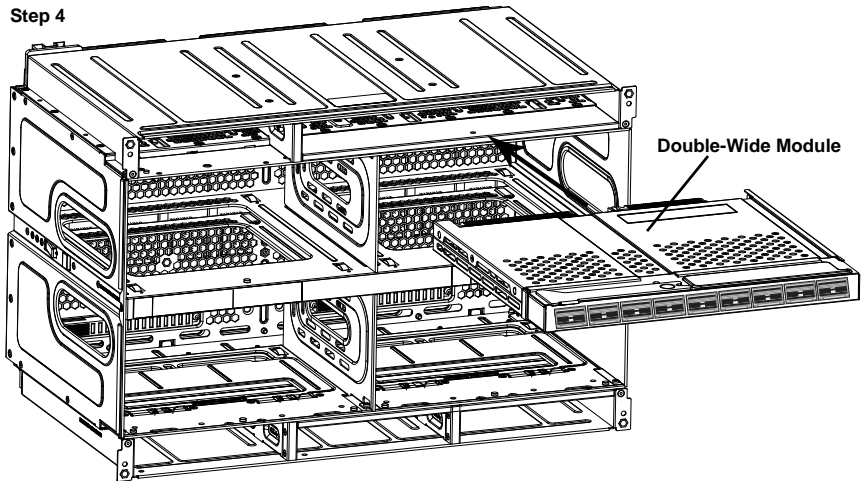


Figure 4-12. Modifying for a Double-Wide Module Bay (Steps 3 & 4)

Step 3



Step 4

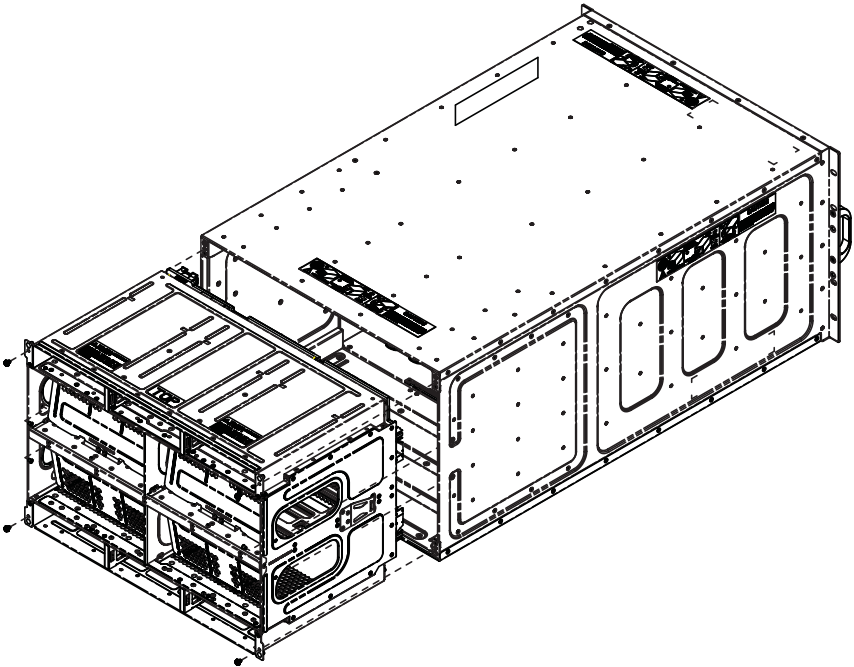


NOTE: For purposes of illustration the chassis in the above images is inverted to show installation for a double-wide module in the chassis bottom.

Modifying an Enclosure's Upper-Left Module Bays for Double Wide Modules

1. Remove the four screws that secure the inner enclosure to the main enclosure. Slide the inner enclosure outward, depressing the locking tabs on both sides to pull it completely out (Figure 4-13).

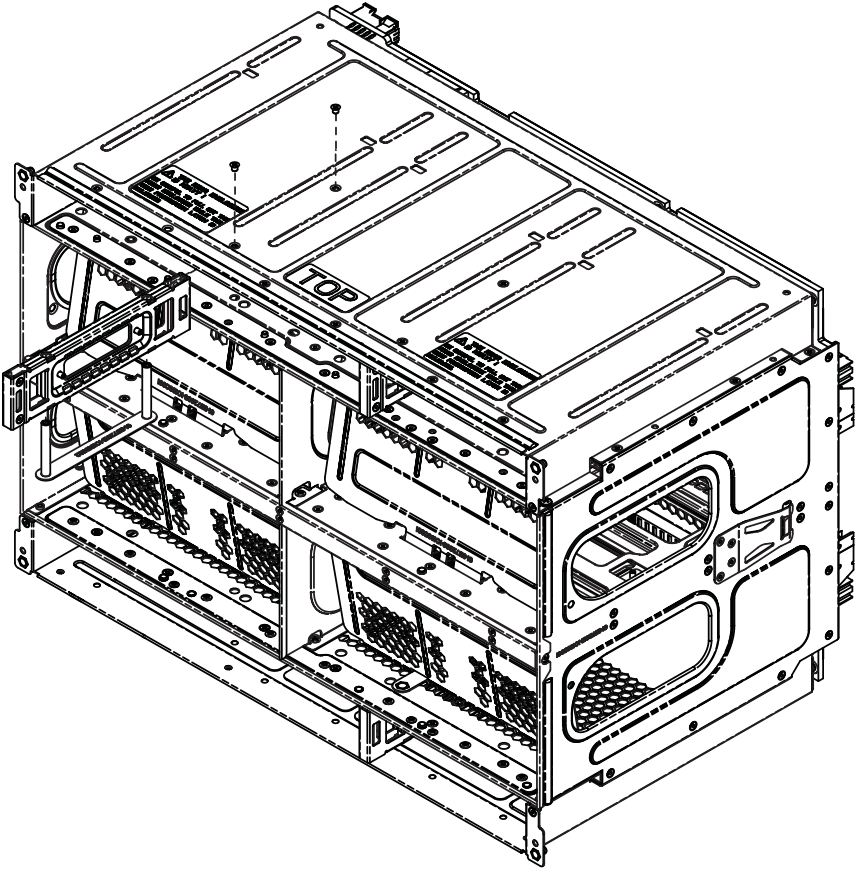
Figure 4-13. Modifying for an Upper Left Double-Wide Bay (Step 1)



2. Remove any single-wide modules that are occupying the bays you wish to modify to a double-wide bay.

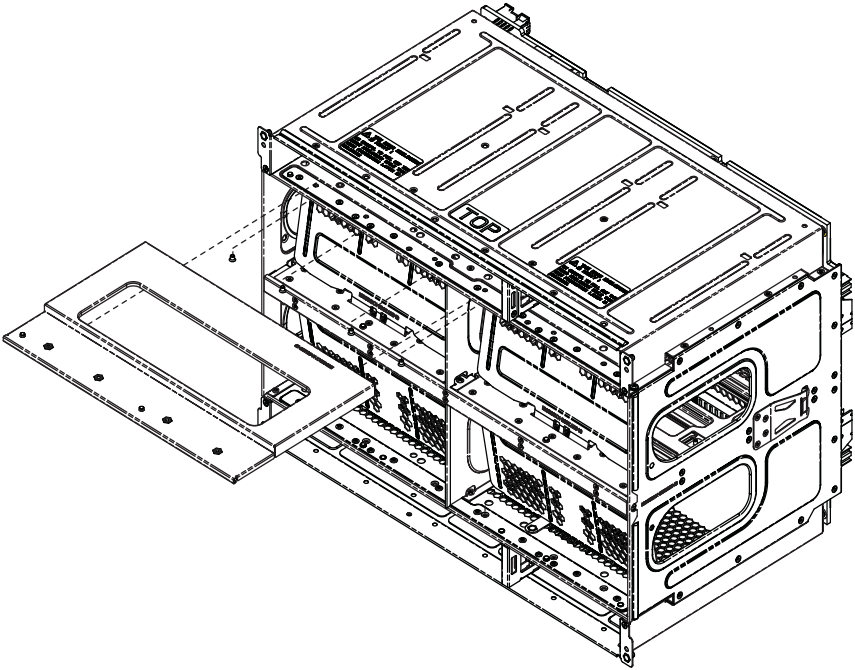
3. In the module bay you wish to expand to double-wide, remove the two screws that secure the center support to the inner enclosure then take out the center support (Figure 4-14).

Figure 4-14. Modifying for an Upper Left Double-Wide Bay (Step 3)



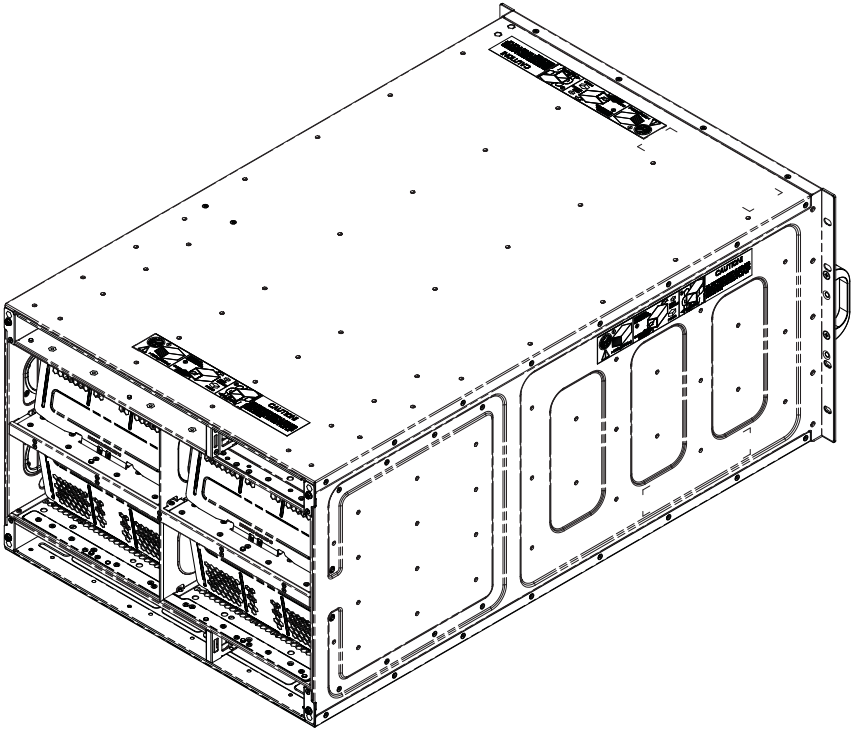
4. Install the horizontal spacer plate into the new double-wide bay and secure it with four screws into the inner enclosure (Figure 4-15).

Figure 4-15. Modifying for an Upper Left Double-Wide Bay (Step 4)



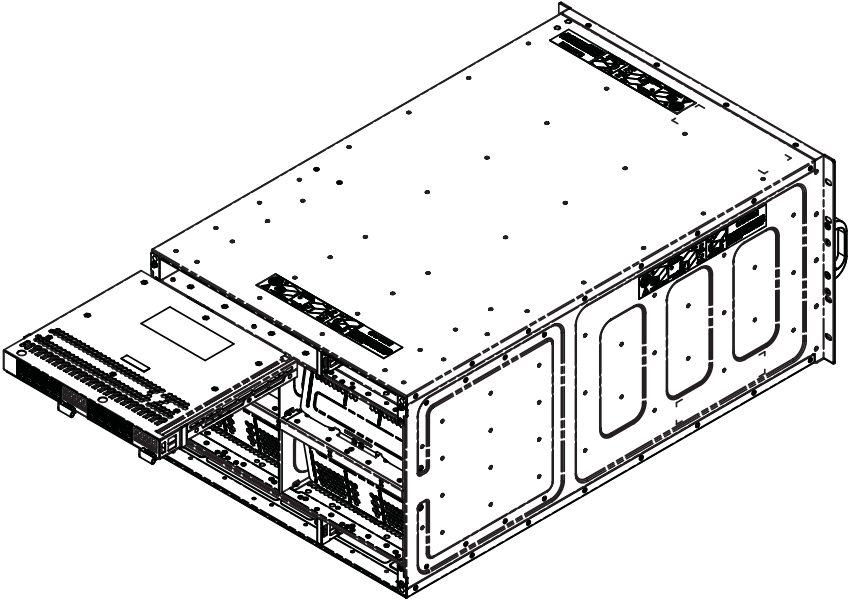
5. Slide the inner enclosure back into the blade enclosure and secure it again with the four securing screws (Figure 4-16).

Figure 4-16. Modifying for an Upper Left Double-Wide Bay (Step 5)



6. You can now install a double-wide module into the bay (Figure 4-17).

Figure 4-17. Modifying for an Upper Left Double-Wide Bay (Step 6)



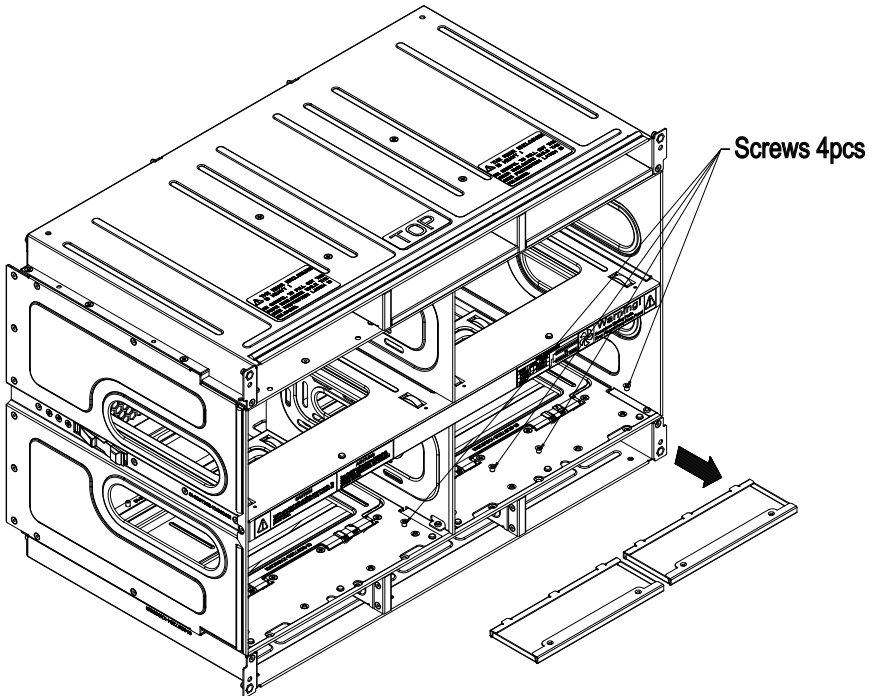
Setting up a Triple Wide Bay

Use the procedure below for installing a triple-wide module bay in a SuperBlade chassis.

Modifying an Enclosure's Module Bays for Triple-Wide Modules

1. Remove the four screws that secure the inner enclosure to the main enclosure. Slide the inner enclosure outward, depressing the locking tabs on both sides to pull it completely out.
2. Remove any single-wide modules that are occupying the bays you wish to modify to a triple-wide bay. See [Figure 4-18, Modifying for a Triple Wide Bay \(Step 1 & 2\)](#) for details.

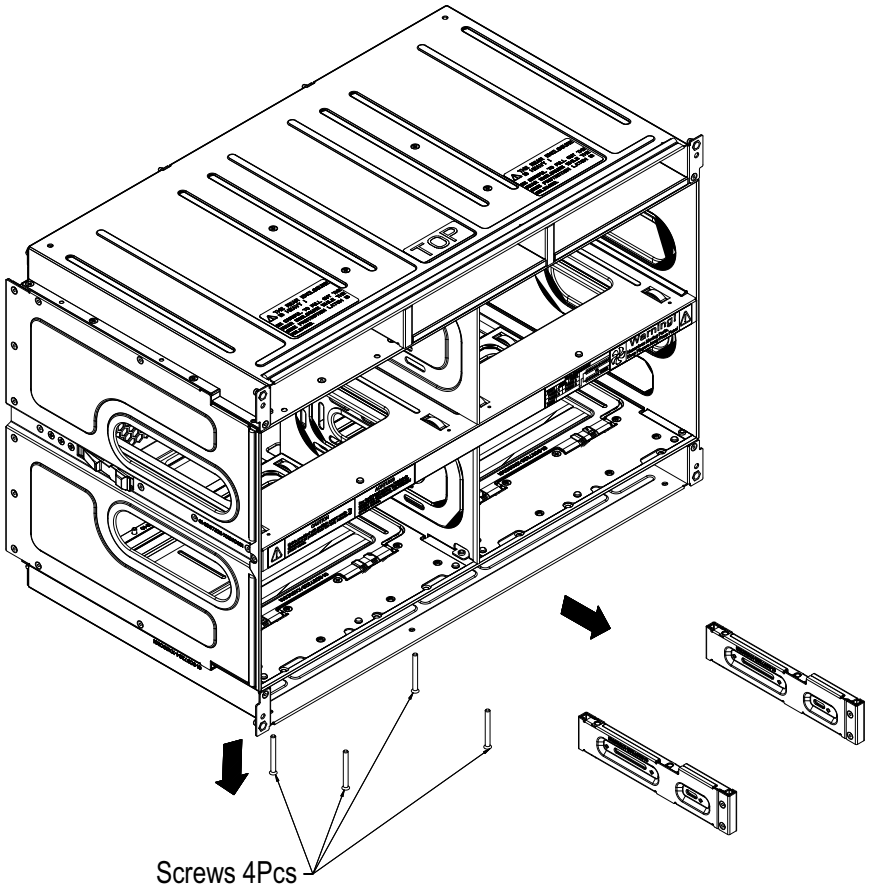
Figure 4-18. Modifying for a Triple Wide Bay (Step 1 & 2)



3. In the module bay you wish to expand to triple wide, remove the two screws that secure the center support to the inner enclosure then take out the center support.

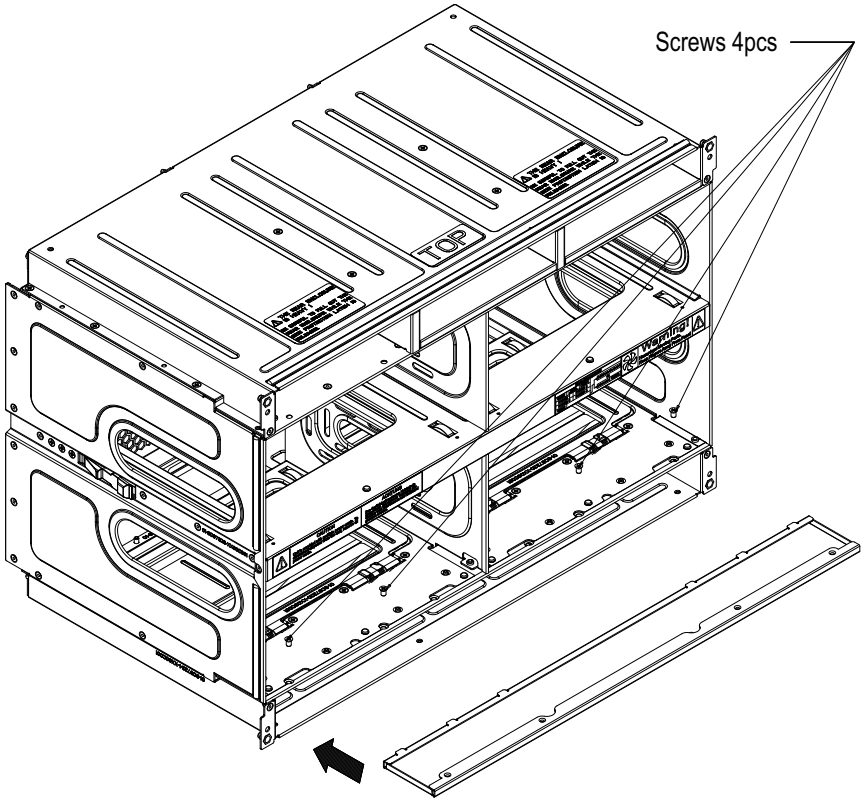
4. Remove the two screws from the underside of each of the two horizontal spacers. See [Figure 4-19, Modifying for a Triple Wide Bay \(Step 3 & 4\)](#) for details.

Figure 4-19. Modifying for a Triple Wide Bay (Step 3 & 4)



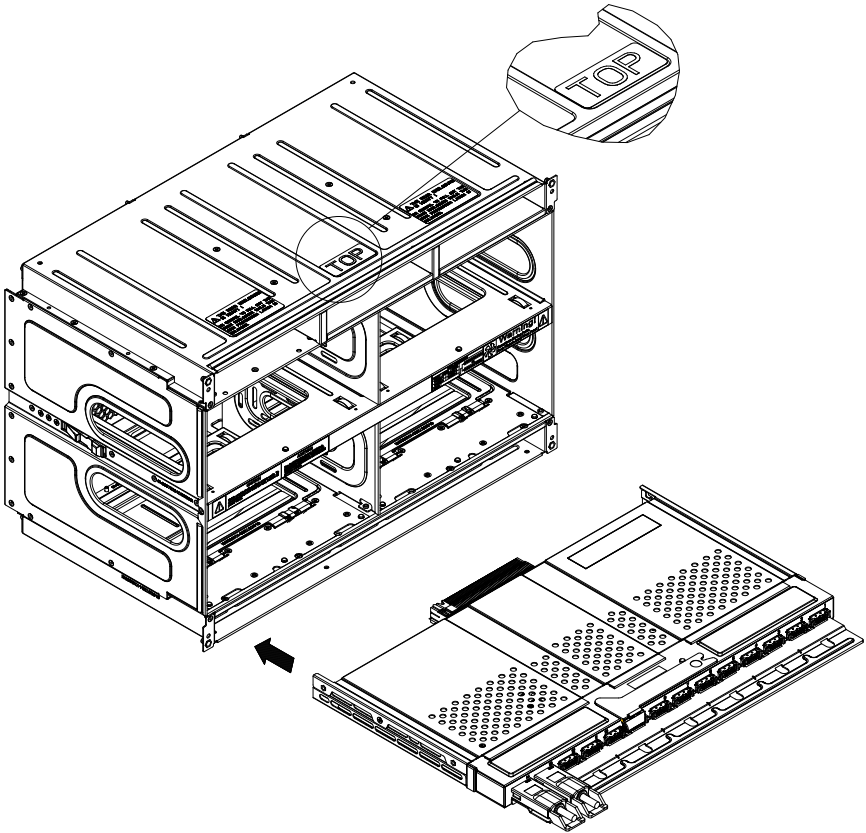
5. Using four screws, install the long horizontal spacer to the same space where the two short spacers were removed. See [Figure 4-20, Modifying for a Triple Wide Bay \(Step 5\)](#) for details.

Figure 4-20. Modifying for a Triple Wide Bay (Step 5)



- You can now install a triple-wide module into the bay. See [Figure 4-21, Modifying for a Triple Wide Bay \(Step 6\)](#) for details.

Figure 4-21. Modifying for a Triple Wide Bay (Step 6)



NOTE: This procedure describes modifying single-wide bays located at the bottom of the inner enclosure. The same procedure applies to the three right most single bays located at the top of the enclosure, but note that the horizontal spacers in the bottom bays use a guide pin and are not interchangeable with the upper bay spacers. Modules in the upper left hand bays will have their release handles on the bottom, while modules in the lower bays will have their release handles on the top. *Placing modules in an “upside-down” orientation in an upper-bay (only) does not affect their operation.*

NOTE: Only one triple-wide module can be installed in an enclosure since each enclosure requires at least one CMM module. The bottom location is recommended. If using the AOC-IBH-002, AOC-IBH-XQS or AOC-IBH-XDS single-port InfiniBand mezzanine card, the InfiniBand pass-through module *MUST* be installed in the bottom location.

Notes

Chapter 5

Power Supply Modules

The SuperBlade enclosure comes standard with one CMM module (see the [Chapter 4](#) for details on the CMM module) and either two or four power supplies. See [Appendix A](#) for summary specification details on the power supplies available to the SuperBlade enclosure.

5-1 Power Supply Modules

The SuperBlade enclosure has four models of power supply modules available: the PWS-1K62-BR 1620W module ([Table 5-1](#)), the PWS-2K53-BR 2500W module ([Figure 5-2](#)) and the PWS-3K01-BR 2500W module ([Figure 5-3](#)).

Four modules are required when the full complement of 10 or 14 blade units are installed into an enclosure. An LED on the back of a power supply will be amber when AC power is present and green when the power is on.

When installing only two power supplies in the enclosure, they should be installed in the lower rather than the upper power bays. This is to provide increased airflow across the memory modules within each blade module.

The 3000W/2500W power supply modules require a 200-240V AC input and a C20 socket, which requires a power cord with a C19 connector (see "[Power Cord](#)" below for details). The 1620W power supply modules can work with both 110V and 220V AC input and use a C14 socket and C13 connectors.

Supermicro's high-efficiency blade system power supplies deliver continuous redundant power up to 94% peak efficiency. Each power supply module includes a management module that monitors the power supplies and the power enclosure

The features of these power supplies are shown in [Table 5-1](#) through [Table 5-2](#) below.

NOTE: Due to high power demands, a full enclosure of Twin-node blade modules in an enclosure requires that you install four PWS-2K53-BR 2500W power modules to power them.

NOTE: A SuperBlade full enclosure with four 1620W power supplies will have a thermal limitation of 30 deg.C ambient temperature.

Figure 5-1. PWS-1K62-BR Power Supply



Table 5-1. PWS-1K62-BR Power Supply Features

Feature	Description
Output	1620W
Type	Redundant Module (N+1)
+12V	132A (200~240VAC input) 100A (100~140VAC input)
5VSB	16A
PFC	Yes
Peak Efficiency	93%
Input AC Range	100-240VAC
Operating Conditions	Temp: -5 to 50 C Humidity: 5 to 95% RH
Fan Type	2x 90mm fans - PFC0912DE-6L38 (8000 RPM with PWM)

Figure 5-2. PWS-2K53-BR Power Supply



Table 5-2. PWS-2K53-BR Power Supply Features

Feature	Description
Output	2500W
Type	Redundant Module (N+1)
+12V	208A
5VSB	16A
PFC	Yes
Peak Efficiency	94%
Input AC Range	200-240VAC
Operating Conditions	Temp: -5 to 50 C Humidity: 5 to 95% RH
Fan Type	4x 90mm fans - PFB0912DE-9E69 (8000 RPM) - QFR0912UHE-9E70 (8800 RPM)

Figure 5-3. PWS-3K01-BR Power Supply



Table 5-3. PWS-3K01-BR Power Supply Features

Feature	Description
Output	3000W
Type	Redundant Module (N+1)
+12V	250A
5VSB	16A
PFC	Yes
Peak Efficiency	94%
Input AC Range	200-240VAC
Operating Conditions	Temp: -5 to 50 C Humidity: 5 to 95% RH
Fan Type	4x 90mm fans PFC0912DE-9E69 (8000 RPM with PWM) QFR0912UHE-9E70 (8800 RPM with PWM)

Power Supply Failure

If a power supply or a fan in a power supply fails, the system management software will notify you of the situation. In either case, you will need to replace the power supply module with another identical one.



NOTE: Refer to www.supermicro/products/superblade for possible updates on part numbers.

Installing a Power Supply

1. Insert a replacement unit into the empty power bay with the handle to the left.

WARNING: This left/right orientation depends on the power supply's top or bottom location. If you inadvertently put a power supply upside down in the lower slots, it can be VERY difficult to remove the power supply.

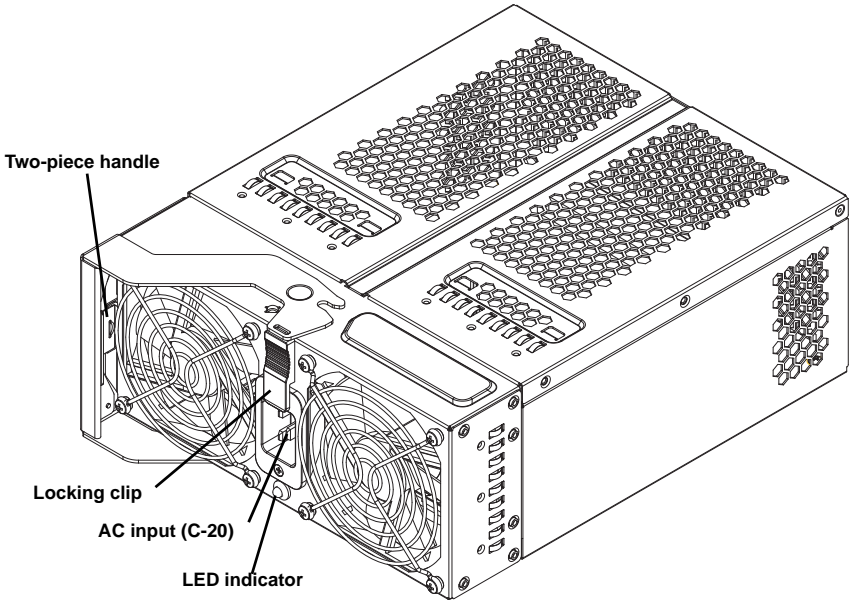
2. Push unit all the way in until it is firmly seated.
3. Push the handle back into the closed position until it clicks into the locked position.
4. Move the locking clip away from the socket and reconnect the power cord.

Removing a Power Supply

First, make sure the power supply has been shut down. You can remove power from a power unit via your system management software.

1. Remove the power cord from the power supply unit.
2. Release the locking clip to unlock the power supply module (see [Figure 5-4](#)).

Figure 5-4. Power Supply Module



3. Pull out the handle and remove the unit: the two-piece handle locks into the closed position. To release the handle, squeeze together the two metal plates of the handle with your thumb and fingers and then pull out.

5-2 Redundant Power Supplies

Each blade enclosure can hold up to four power supplies. Installing all four power supplies may provide you with redundant power – depending upon the number of blades in the enclosure, the model and power level of the power supplies installed and the power load from modules in your system. In most blade enclosure systems power supplies may be redundant and therefore provide backup in case of power supply failure. The configuration for power redundancy is created using the IPMIView application tool for the system.

For purposes of denoting the amount of redundancy, a server system has N main power supplies to support the whole system working, with a “+” number after the N denoting the number of redundant power supplies. Hence, if there is one power supply for redundancy in a system that has the feature of "redundant power", the total of power supplies for that server system is denoted as $N+1$.

For example, suppose a 10-blade system has four 2500 Watt Power Supply Units (PSU), for a total power supply of 10000 Watts. The maximum power usage of each blade is 375 Watts for a total power demand of 3750 Watts to run the whole system. So in this example there are effectively one redundant power supplies ($N+1$) over what is needed to power the blades in the system.

In the IPMIView tool you can set the priority (default CPU power usage) of each blade first before any PSU fails (0%→shut down, 50%→throttling, 100%→Running). See [Figure 5-5](#) below for an example.

Figure 5-5. Blade Status Screen

The screenshot shows the SUPERMICR IPMIView web interface. The main content area displays the "Blade Status" screen, which includes a table with the following columns: Blade, Model, Pwr Status, Max Pwr Usage, KVM, UID, Error, BMC IP, and CPU/Pwr Usage. Below the table are several control buttons for each blade, including Power on, Power off, Reset, UID on, UID off, KVM, Graceful Shutdown, CPU/Pwr Usage, and Refresh Blade Status.

Blade	Model	Pwr Status	Max Pwr Usage	KVM	UID	Error	BMC IP	CPU/Pwr Usage
<input type="checkbox"/> Blade 1								
<input type="checkbox"/> Blade 2								
<input type="checkbox"/> Blade 3								
<input type="checkbox"/> Blade 4	B8DT6-E	Off	400	Not Selected	Disabled	Normal	172.31.8.251	50%
<input type="checkbox"/> Blade 5								
<input type="checkbox"/> Blade 6	B8DTL-E	Off	375	Not Selected	Disabled	Normal	172.31.8.161	50%
<input type="checkbox"/> Blade 7								50%
<input type="checkbox"/> Blade 8								50%
<input type="checkbox"/> Blade 9								100%
<input type="checkbox"/> Blade 10								

Therefore the following redundancies apply to your system when, as an example, 2500W power supplies fail.

- If one PSU fails, then you have 7500 Watts available. The CMM will detect the remaining power left for the whole system. But because the total blade power usage is only 3750 Watts, every blade can still work properly.
- If 2 PSUs fail, then only 5000 Watts are left available to support the blade power usage. The system can still support all ten blades running in it.
- If 3 PSUs fail, then the remaining 2500 Watts available cannot support the whole system. Therefore the CMM will start to shut down or throttle down the load in order to keep blades running based upon the priority settings that were made for each blade using the IPMIView application until the load is enough to power the remaining blade modules.

5-3 Power Supply Fans

Each power supply unit has two to four rear fans. These fans are not hot-swappable. If one fails, the power supply will continue to operate but you should replace the power supply unit at the earliest opportunity. If two or more fans fail, the power supply unit will shut down and the LED on the back will turn amber.

5-4 Power Components

Power components for your system's power supplies are shown below in [Figure 5-6](#) and described in [Table 5-4](#).

Figure 5-6. Power Components

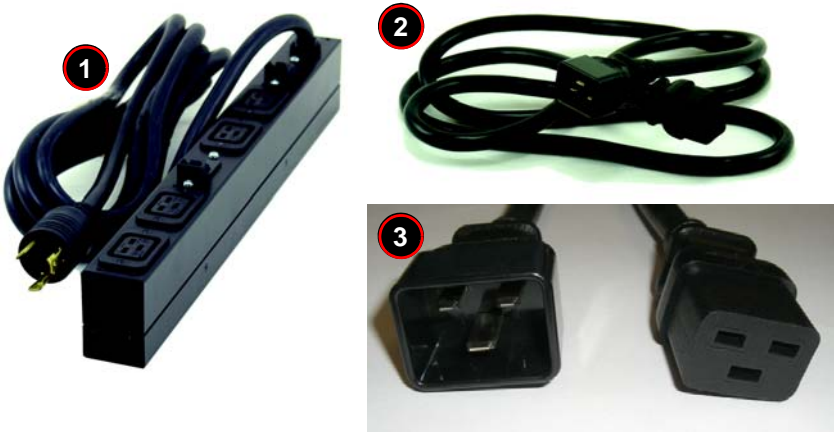


Table 5-4. Power Components

Item	Name	Description
1	PDU	Power Distribution Unit (MCP-520-00036-0N)
2	Power Cord	Extension Cord (CBL-0223L or CBL-0248L)
3	AC Power Cord	See " Power Cord " below for details.

Power Cord

Each 3000W or 2500W power supply module has its own power cord with a C19 type connector (IEC-60320-C19) to connect to the power supply. The power cord connects to a C20 type socket (IEC-60320-C20) for AC power on the power supply module.

Each 1620W power supply module has a C-14 type socket (IEC-60320-C14) for AC power and the power cord must have a C-13 type connector (IEC-60320-C13) to connect to the power supply.

See [Figure 5-6](#) for an example of a power cord.

The plastic locking clip that partially covers the socket was designed to prevent the power supply module from being removed with the power cord still connected.

For details on the required power cord for your country, see the SuperMicro web site at:

<http://www.supermicro.com/products/superblade/powersupply/powercord.cfm>

Power Cord Tie and Clamp

A cable tie and clamp are available for all blade power supply models. Using the cable tie (MCP-140-00015-0N), in conjunction with the cable clamp (MCP-140-00017-0N or MCP-140-00016-0N) and a small screw, allows you to secure the power cord to the power supply unit. This avoids it loosening and falling off the power supply due to any system vibration during its operation.

NOTE: There are two clamps available for use. Use the MCP-140-00017-0N clamp for all power cords that are **at or under** 9mm in diameter. Use the MCP-140-00016-0N clamp for all power cords **over** 9mm in diameter.

Figure 5-7 below provides an illustration of the tie and clamps with a power supply cord and power supply.

Figure 5-7. Power Cord Tie and Clamp Parts

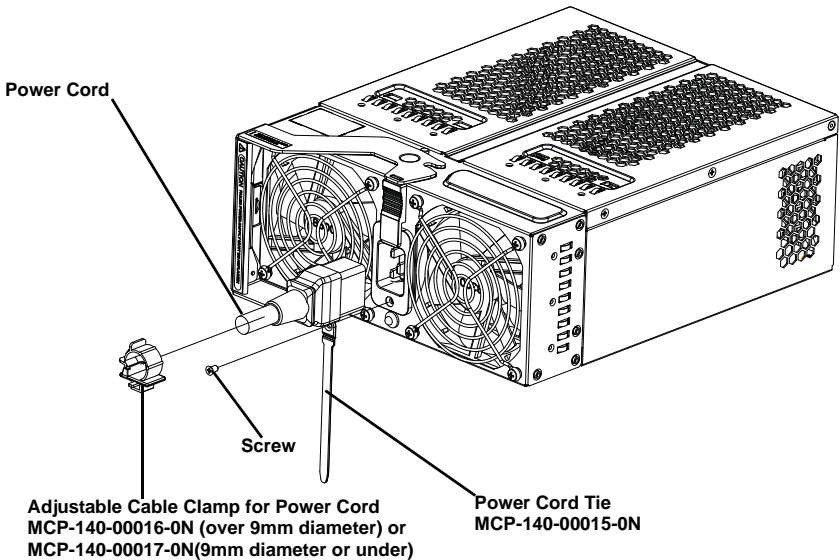
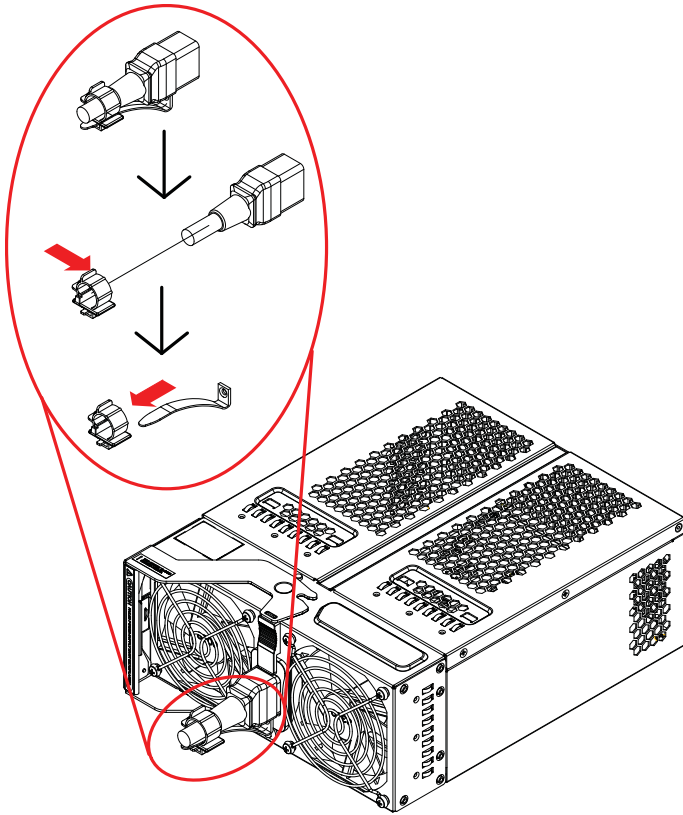


Figure 5-8 shows how to assemble the cable tie and clamp on the power cord. Simply place the clamp around the power cord and attach the cable tie to both the clamp and the power supply using a screw. This will secure the power cord to the power supply and keep it from dislodging during operation.

NOTE: The same power cord ties and clamps apply for all current power supplies for the SuperBlade enclosure.

Figure 5-8. Power Cord Tie and Clamp Assembly



Notes

Appendix A

System Specifications

A-1 Enclosure Specifications

Table A-1. Enclosure Specification Features

Enclosure	SBE-710E, SBE-714D/E, SBE-720E, SBE-720D-D50/R75 and SBE-710Q rack mount blade enclosures Dimensions: (WxHxD) 18.5 x 12.1 x 29 in. (470 x 307 x 737 mm)
Blade Module Support	Up to 10 or 14 hot-plug blade modules (supports mixing of Intel and AMD blades)
System Cooling	2x90mm PFC0912DE-6L38 (8000 RPM with PWM) fans for 1400W and 1600W; 4x90mm PFB0912DHE-6X39 (8000 RPM with PWM) or QFR0912UHE-6F78 (8300 RPM with PWM) fans for 2000W. Up to sixteen (16) cooling fans total can be mounted in an enclosure.
Power Supplies (2 or 4 modules required)	Rated Output Power: 2000W (Part# PWS-2K01-BR, C-20 type socket) or 1400W (Part# PWS-1K41-BR, C-14 type socket) power supplies Rated Output Voltages: +12V (166A), +5Vsb (16A) for 2000W; +12V (132A for 200-240V AC or 100A for 100-140V AC), +5Vsb (16A) for 1620W; +12V (116A for 200-240V AC or 100A for 100-140V AC), +5Vsb (16A) for 1400W
System Input Requirements	AC Input Voltage: 200~240V AC auto-range for 2000W or 2500W, or 100~240V AC auto-range for 1620W or 1400W Rated Input Current: 10A-14A for 2000W, 7.2-9.5A for 1400W Rated Input Frequency: 50 to 60 Hz for both 2000W and 1400W
BTU Rating	8530 BTUs/hr for rated output power of 2500W 7584 BTUs/hr for rated output power of 2000W 5530 BTUs/hr for rated output power of 1620W 4760 BTUs/hr for rated output power of 1400W

A-2 Environmental Specifications

Table A-2. Environmental Specification Features

Operating Environment	Operating Temperature: 10° to 35° C (50° to 95° F)
	Non-operating Temperature: -40° to 70° C (-40° to 158° F)
	Operating Relative Humidity: 8% to 90% (non-condensing)
	Non-operating Relative Humidity: 5 to 95% (non-condensing)
Regulatory Compliance	Electromagnetic Emissions: FCC Class A, EN 55022 Class A, EN 61000-3-2/-3-3, CISPR 22 Class A
	Electromagnetic Immunity: EN 55024/CISPR 24, (EN 61000-4-2, EN 61000-4-3, EN 61000-4-4, EN 61000-4-5, EN 61000-4-6, EN 61000-4-8, EN 61000-4-11)
Safety	EN 60950/IEC 60950-Compliant, UL Listed (USA), CUL Listed (Canada), TUV Certified (Germany), CE Marking (Europe) California Best Management Practices Regulations for Perchlorate Materials: This Perchlorate warning applies only to products containing CR (Manganese Dioxide) Lithium coin cells. "Perchlorate Material-special handling may apply. See www.dtsc.ca.gov/hazardouswaste/perchlorate for details.

A-3 Address Defaults

Table A-3. Address Defaults

CMM Module	IP Address: 192.168.100.100
	Gateway Address: 0.0.0.0
	Subnet Mask: 255.255.255.0
	User Name and Password: ADMIN and ADMIN (case sensitive)
GbE Switch	IP Address: 192.168.100.102
	Gateway Address: 192.168.100.1
	Subnet Mask: 255.255.255.0

A-4 Power Supply Power Calculations

Table A-4. Power Supply: Power Calculations (PWS-3K01-BR)

Calculation	Value
Watts	2500
Volts (High/Low)	240/200
Amps (High/Low)	18.5/15.5
Efficiency (High)	94%
Power Factor (High)	98%
10% Reserve (High)	1.8
10% Reserve (Low)	1.6
Amps (Total)	20.3@240 volts

Table A-5. Power Supply: Power Calculations (PWS-2K53-BR)

Calculation	Value
Watts	2500
Volts (High/Low)	240/200
Amps (High/Low)	15.4/12.9
Efficiency (High)	94%
Power Factor (High)	98%
10% Reserve (High)	1.5
10% Reserve (Low)	1.3
Amps (Total)	17@240 volts

Table A-6. Power Supply: Power Calculations (PWS-1K62-BR)

Calculation	Value
Watts	1620/1200
Volts (High/Low)	240/100
Amps (High/Low)	9.8/8.3
Efficiency (High)	93%
Power Factor (High)	99%
10% Reserve (High)	1.0
10% Reserve (Low)	0.9
Amps (Total)	132A (200~240VAC input) 100A (100~140VAC input)

Disclaimer

The products sold by Supermicro are not intended for and will not be used in life support systems, medical equipment, nuclear facilities or systems, aircraft, aircraft devices, aircraft/emergency communication devices or other critical systems whose failure to perform be reasonably expected to result in significant injury or loss of life or catastrophic property damage. Accordingly, SuperBlade disclaims any and all liability, and should buyer use or sell such products for use in such ultra-hazardous applications, it does so entirely at its own risk. Furthermore, buyer agrees to fully indemnify, defend and hold Supermicro harmless for and against any and all claims, demands, actions, litigation, and proceedings of any kind arising out of or related to such ultra-hazardous use or sale.
