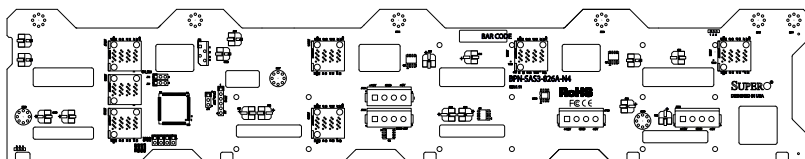




## BPN-SAS3-826A BACKPLANE



## USER'S GUIDE

Rev. 1.0a

---

The information in this User's Manual has been carefully reviewed and is believed to be accurate. The vendor assumes no responsibility for any inaccuracies that may be contained in this document, makes no commitment to update or to keep current the information in this manual, or to notify any person or organization of the updates. **Please Note: For the most up-to-date version of this manual, please see our web site at [www.supermicro.com](http://www.supermicro.com).**

Super Micro Computer, Inc. ("Supermicro") reserves the right to make changes to the product described in this manual at any time and without notice. This product, including software and documentation, is the property of Supermicro and/or its licensors, and is supplied only under a license. Any use or reproduction of this product is not allowed, except as expressly permitted by the terms of said license.

IN NO EVENT WILL SUPERMICRO BE LIABLE FOR DIRECT, INDIRECT, SPECIAL, INCIDENTAL, SPECULATIVE OR CONSEQUENTIAL DAMAGES ARISING FROM THE USE OR INABILITY TO USE THIS PRODUCT OR DOCUMENTATION, EVEN IF ADVISED OF THE POSSIBILITY OF SUCH DAMAGES. IN PARTICULAR, SUPERMICRO SHALL NOT HAVE LIABILITY FOR ANY HARDWARE, SOFTWARE, OR DATA STORED OR USED WITH THE PRODUCT, INCLUDING THE COSTS OF REPAIRING, REPLACING, INTEGRATING, INSTALLING OR RECOVERING SUCH HARDWARE, SOFTWARE, OR DATA.

Any disputes arising between manufacturer and customer shall be governed by the laws of Santa Clara County in the State of California, USA. The State of California, County of Santa Clara shall be the exclusive venue for the resolution of any such disputes. Super Micro's total liability for all claims will not exceed the price paid for the hardware product.

California Best Management Practices Regulations for Perchlorate Materials: This Perchlorate warning applies only to products containing CR (Manganese Dioxide) Lithium coin cells. "Perchlorate Material-special handling may apply. See [www.dtsc.ca.gov/hazardouswaste/perchlorate](http://www.dtsc.ca.gov/hazardouswaste/perchlorate)"

---

**WARNING: Handling of lead solder materials used in this product may expose you to lead, a chemical known to the State of California to cause birth defects and other reproductive harm.**

---

Manual Revision 1.0a  
Release Date: November 19, 2015

Unless you request and receive written permission from Super Micro Computer, Inc., you may not copy any part of this document.

Information in this document is subject to change without notice. Other products and companies referred to herein are trademarks or registered trademarks of their respective companies or mark holders.

Copyright © 2015 by Super Micro Computer, Inc.  
All rights reserved.

**Printed in the United States of America**

---

---

# Contents

Contacting Supermicro.....	iv
Returning Merchandise for Service.....	v
<b>Chapter 1 Guidelines</b>	
1-1 ESD Safety Guidelines .....	1-1
1-2 General Safety Guidelines .....	1-1
1-3 Version Information .....	1-2
<b>Chapter 2 Jumpers and Pin Definitions</b>	
2-1 Rear Connectors and Jumpers.....	2-1
2-2 Rear Connector and Pin Definitions .....	2-2
2-3 Rear Jumper Locations and Pin Definitions .....	2-3
Explanation of Jumpers .....	2-3
2-4 Front Connectors and LED Indicators .....	2-4

## Contacting Supermicro

### Headquarters

Address: Super Micro Computer, Inc.  
980 Rock Ave.  
San Jose, CA 95131 U.S.A.

Tel: +1 (408) 503-8000

Fax: +1 (408) 503-8008

Email: [marketing@supermicro.com](mailto:marketing@supermicro.com) (General Information)  
[support@supermicro.com](mailto:support@supermicro.com) (Technical Support)

Web Site: [www.supermicro.com](http://www.supermicro.com)

### Europe

Address: Super Micro Computer B.V.  
Het Sterrenbeeld 28, 5215 ML  
's-Hertogenbosch, The Netherlands

Tel: +31 (0) 73-6400390

Fax: +31 (0) 73-6416525

Email: [sales@supermicro.nl](mailto:sales@supermicro.nl) (General Information)  
[support@supermicro.nl](mailto:support@supermicro.nl) (Technical Support)  
[rma@supermicro.nl](mailto:rma@supermicro.nl) (Customer Support)

Web Site: [www.supermicro.nl](http://www.supermicro.nl)

### Asia-Pacific

Address: Super Micro Computer, Inc.  
3F, No. 150, Jian 1st Rd.  
Zhonghe Dist., New Taipei City 235  
Taiwan (R.O.C)

Tel: +886-(2) 8226-3990

Fax: +886-(2) 8226-3992

Email: [support@supermicro.com.tw](mailto:support@supermicro.com.tw)

Web Site: [www.supermicro.com.tw](http://www.supermicro.com.tw)

## Returning Merchandise for Service

A receipt or copy of your invoice marked with the date of purchase is required before any warranty service will be rendered. You can obtain service by calling your vendor for a Returned Merchandise Authorization (RMA) number. When returning to the manufacturer, the RMA number should be prominently displayed on the outside of the shipping carton, and mailed prepaid or hand-carried. Shipping and handling charges will be applied for all orders that must be mailed when service is complete.

For faster service, RMA authorizations may be requested online (<http://www.supermicro.com/support/rma/>).

Whenever possible, repack the backplane in the original Supermicro box, using the original packaging materials. If these are no longer available, be sure to pack the backplane in an anti-static bag and inside the box. Make sure that there is enough packaging material surrounding the backplane so that it does not become damaged during shipping.

This warranty only covers normal consumer use and does not cover damages incurred in shipping or from failure due to the alteration, misuse, abuse or improper maintenance of products.

During the warranty period, contact your distributor first for any product problems.

## Notes

# Chapter 1

## Guidelines

This chapter offers guidelines for personal and equipment safety, and notes about the BPN-SAS3-826A version documented in this manual.

### 1-1 ESD Safety Guidelines

*Electrostatic Discharge (ESD) can damage electronic components. To prevent damage to your system, it is important to handle it very carefully. The following measures are generally sufficient to protect your equipment from ESD.*

- Use a grounded wrist strap designed to prevent static discharge.
- Touch a grounded metal object before removing a component from the antistatic bag.
- Handle the backplane by its edges only; do not touch its components, peripheral chips, memory modules or gold contacts.
- When handling chips or modules, avoid touching their pins.
- Put the card and peripherals back into their antistatic bags when not in use.

### 1-2 General Safety Guidelines

- Always disconnect power cables before installing or removing any components from the computer, including the backplane.
- Disconnect the power cord before installing or removing any cables from the backplane.
- Make sure that the backplane is securely and properly installed on the mounting frame in the chassis to prevent damage to the system due to power shortage.

## 1-3 Version Information

The BPN-SAS3-826A backplane has been designed to utilize the most up-to-date technology available, providing your system with reliable, high-quality performance.

This manual reflects BPN-SAS3-826A Revision 1.11, the most current release available at the time of publication. Always refer to the Supermicro Web site at [www.supermicro.com](http://www.supermicro.com) for the latest updates, compatible parts and supported configurations.

All images and layouts in this user's guide are based upon the latest PCB revision available at the time of publishing. The backplane you have received may not look exactly the same as the graphics in this manual.



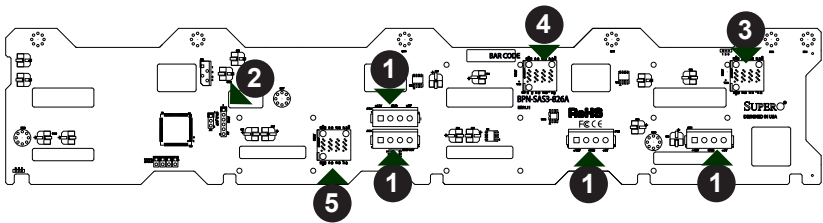
## Chapter 2

### Jumpers and Pin Definitions

This manual covers the BPN-SAS3-826A backplane.

#### 2-1 Rear Connector Locations

The following connectors are on the side of the backplane that faces the rear of the chassis. They are marked by silkscreen labels.



**Figure 2-1. Rear Connectors**

- |  |                                |
|--|--------------------------------|
| 1. Power Connectors, 4-pin: JPW1, JPW2, JPW3 and JPW4. | 3. Mini SAS HD Connector: JSM1 |
| 2. JTAG Connector: JS27, CPLD upgrade port (6-pin)     | 4. Mini SAS HD Connector: JSM2 |
|  | 5. Mini SAS HD Connector: JSM3 |

## 2-2 Rear Connector and Pin Definitions

### 1. Backplane Main Power Connectors

The 4-pin connectors, designated JPW1, JPW2, JPW3 and JPW4 provide power to the backplane. See the table on the right for pin definitions.

### 2. CPLD Upgrade Port

The JP27 connector is used only by manufacturing to upgrade CPLD.

### 3-5. Mini SAS HD Connectors

The three SAS connectors are used to connect the SAS drive cables and are designated JSM1 to JSM3. Each of the three connectors has four ports for a total of twelve ports. These twelve ports are designated SAS#0 - SAS#11. They are also compatible with SATA drives.

Backplane Main Power 4-Pin Connector	
Pin#	Definition
1	+12V
2 and 3	Ground
4	+5V

## 2-3 Rear Jumper Locations and Pin Definitions

No jumpers on this backplane are configurable by the user.

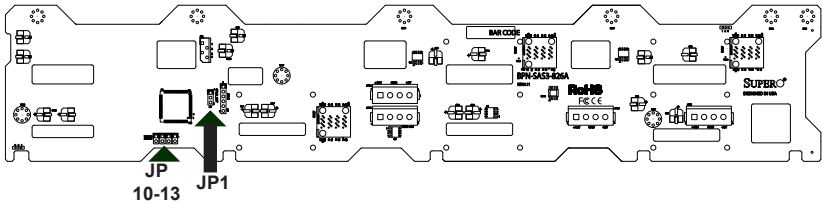
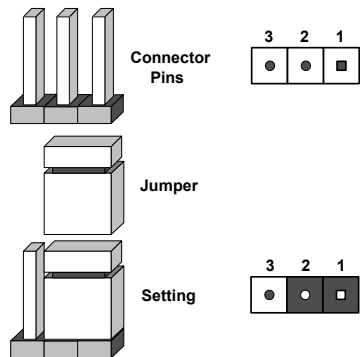


Figure 2-2. Rear Jumpers

Jumper Settings		
Jumper	Settings	Note
JP1	1-2	Not used
JP10, JP11, JP12, JP13	Open	Reserved for future

### Explanation of Jumpers

To modify the operation of the backplane, jumpers can be used to choose between optional settings. Jumpers create shorts between two pins to change the function of the connector. Pin 1 is identified with a square solder pad on the printed circuit board. Note: On two pin jumpers, "Closed" means the jumper is on and "Open" means the jumper is off the pins.



## 2-4 Front Connectors and LED Indicators

All connectors support SAS3.

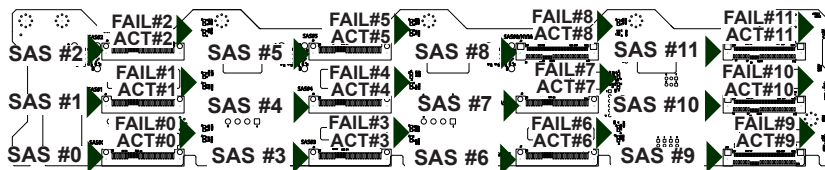


Figure 2-4. Front Connectors and LEDs

Front SAS/SATA Connectors and LED Indicators			
Connector Number and HDD Number	Label	HDD Activity LED (blue)	Failure LED (red*)
SAS #0	J1	ACT#0	FAIL#0
SAS #1	J2	ACT#1	FAIL#1
SAS #2	J3	ACT#2	FAIL#2
SAS #3	J4	ACT#3	FAIL#3
SAS #4	J5	ACT#4	FAIL#4
SAS #5	J6	ACT#5	FAIL#5
SAS #6	J7	ACT#6	FAIL#6
SAS #7	J8	ACT#7	FAIL#7
SAS #8	J9	ACT#8	FAIL#8
SAS #9	J10	ACT#9	FAIL#9
SAS #10	J11	ACT#10	FAIL#10
SAS #11	J12	ACT#11	FAIL#11

\* The failure LED may display several states, as described in the table below.

Color and State	Indication
Red, solid	Failure
Red, blinking at 1Hz	Rebuild
Red, blinking at 4Hz	Identify

## Notes

Disclaimer (cont.)

The products sold by Supermicro are not intended for and will not be used in life support systems, medical equipment, nuclear facilities or systems, aircraft, aircraft devices, aircraft/emergency communication devices or other critical systems whose failure to perform be reasonably expected to result in significant injury or loss of life or catastrophic property damage. Accordingly, Supermicro disclaims any and all liability, and should buyer use or sell such products for use in such ultra-hazardous applications, it does so entirely at its own risk. Furthermore, buyer agrees to fully indemnify, defend and hold Supermicro harmless for and against any and all claims, demands, actions, litigation, and proceedings of any kind arising out of or related to such ultra-hazardous use or sale.