

SUPERMICRO

Performance Begins Now





X12 Channel Training

Dr. Kunbin HONG
Director of Solutions





Welcome



- Computing Trends Insight
- 3rd Gen Intel[®] Xeon[®] Scalable Processors Update
- Supermicro X12 Update





Computing Trends Insight



1st



Steam engine

- Industrial production powered by a new resource
- Steel, rail transport, etc.

2nd



Electricity

- Mass production
- Oil, internal combustion engine

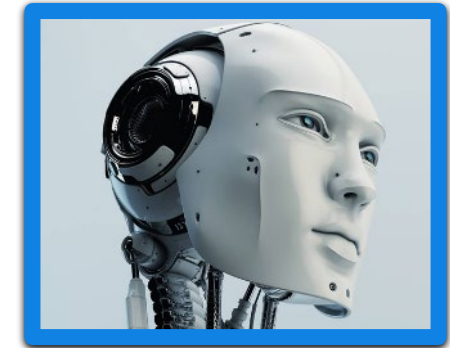
3rd



Information technology

- Automated production
- Communications, internet, personal computers

4th

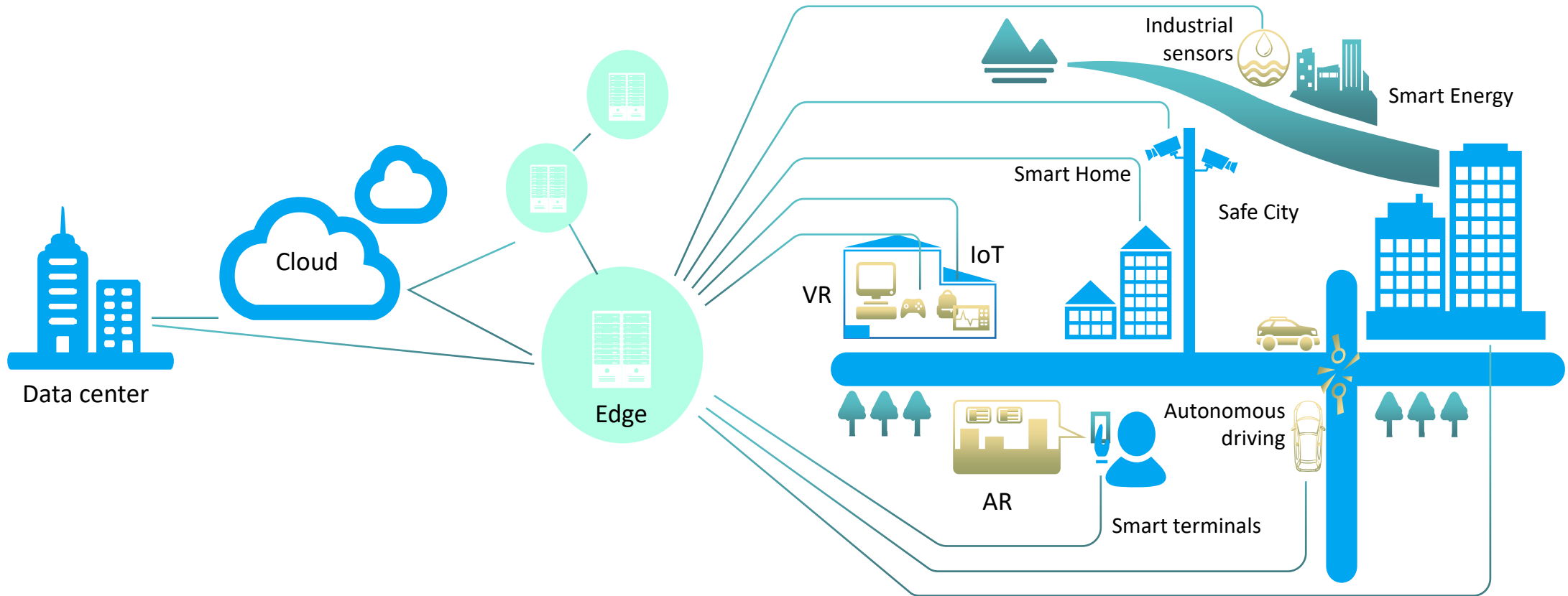


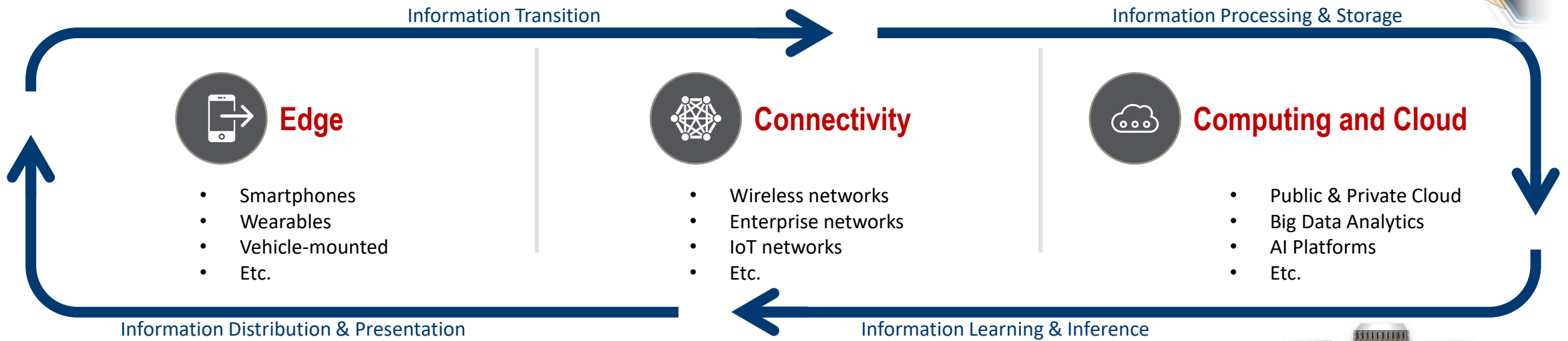
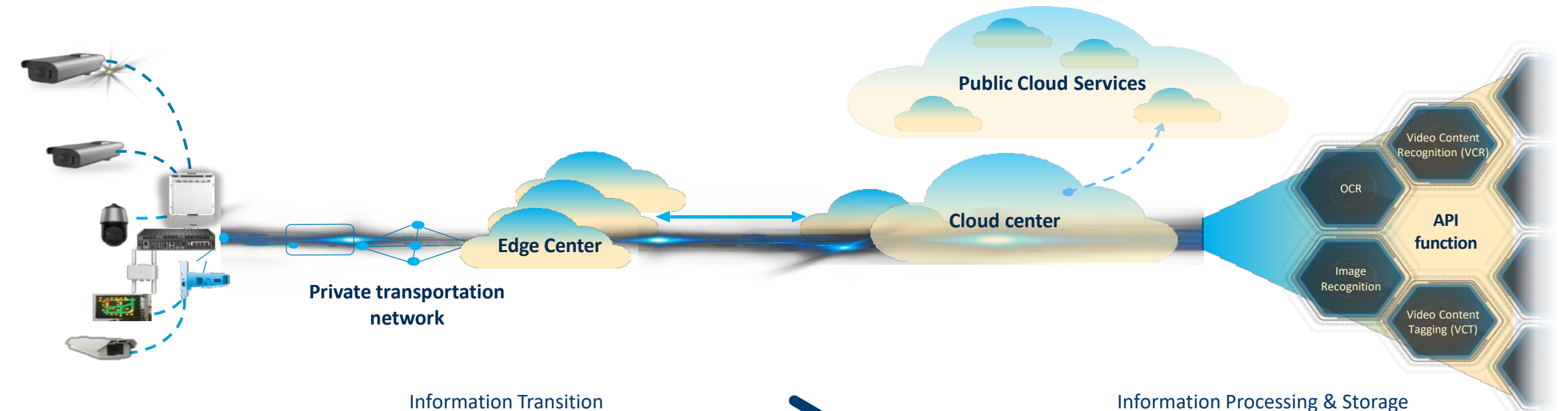
Intelligent technology

- Intelligent production
- AI, IoT, bioscience integrated into human society



All Things Sensing | All Things Connected | All Things Intelligent







3rd Gen Intel[®] Xeon[®] Scalable Processors Update



Move Faster



Intel® Ethernet E810-2CQDA2

Up to 200GbE per PCIe 4.0 slot for bandwidth-intensive workloads

Store More



Intel® Optane™ SSD P5800X

Fastest SSD on the planet



Intel® Optane™ Persistent Memory 200 series

Up to 6TB memory per socket + Native data persistence



Intel® SSD D5-P5316

First PCIe 4.0 144-Layer QLC 3D NAND Enables up to 1PB storage in 1U

Process Everything



3rd Gen Intel® Xeon® Scalable processor

Intel's highest performing server CPU with built-in AI and security solutions

Intel® Agilex™ FPGA

Industry leading FPGA logic performance and performance/watt

Optimized Solutions



>500
Partner Solutions





Cloud

UP TO
1.5x

Improvement in
Latency Sensitive
Workloads



5G

UP TO
1.62x

Improvement
in Network and
Communications
Workloads



IoT

UP TO
1.56x

Image Classification
Inference
Improvement



HPC

UP TO
1.57x

Faster Modeling
for Critical Vaccine
Research



Artificial
Intelligence

UP TO
1.74x

Language
Processing
Inference
Improvements

Performance varies by use, configuration and other factors. Configurations see appendix [5,7, 17, 19, 52]





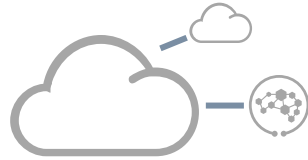
Supermicro X12 Update





Enterprise Applications

Ultra | Twin | Storage | Hyper



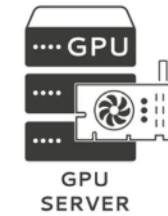
Intelligent Cloud Infrastructure

Storage | Big Data | Data Analytics | HCI



AI and HPC

Heterogeneous Servers



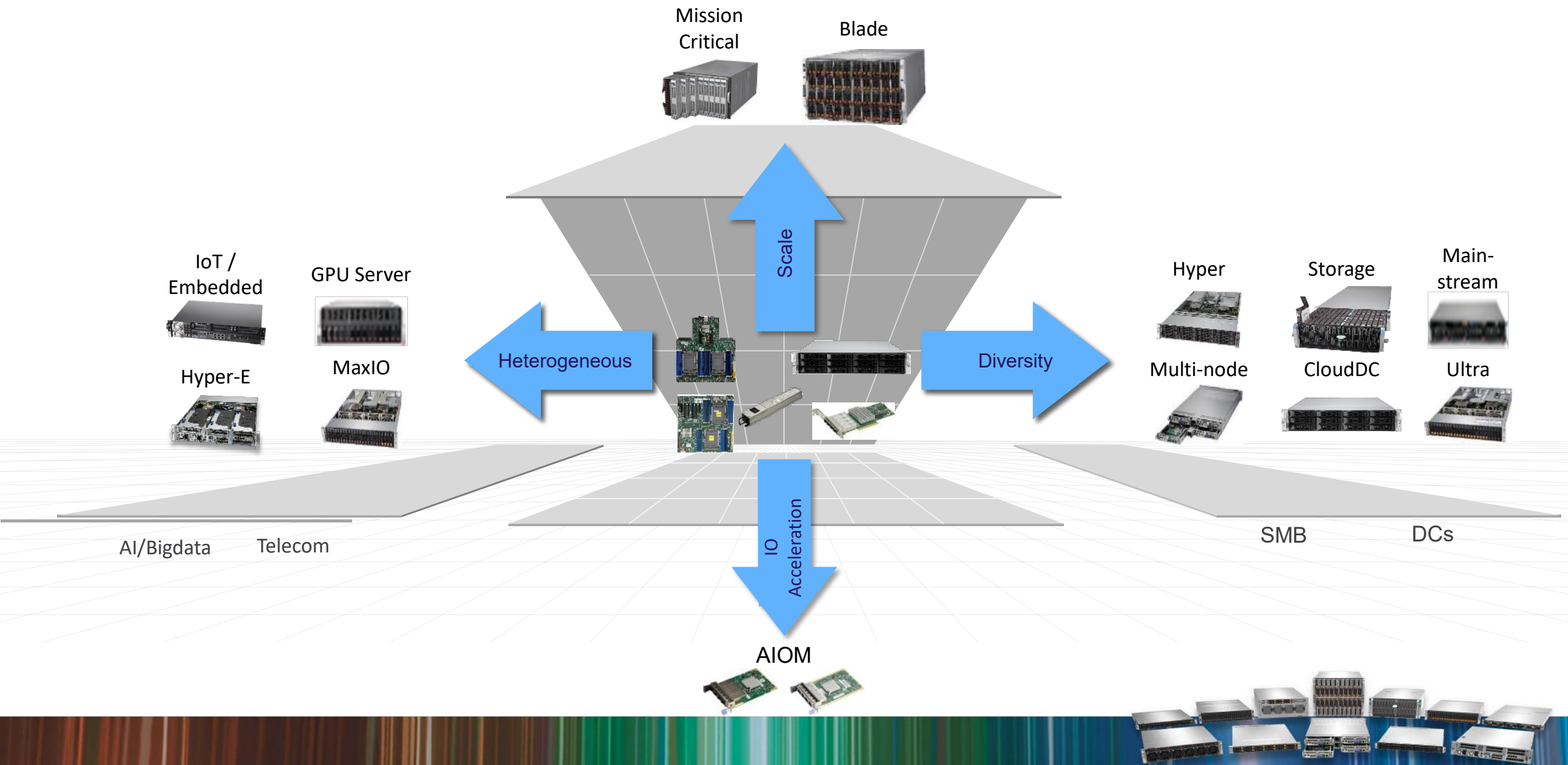
5G and Edge

Edge Servers | Hyper-E





Accelerate Your Business



Mission Critical

Blade



Scale

Heterogeneous

Diversity

IO Acceleration

AIOM

IoT / Embedded



GPU Server



Hyper-E



MaxIO



Hyper



Storage



Main-stream



Multi-node



CloudDC



Ultra



AI/Bigdata

Telecom

SMB

DCs





X12 Systems for Enterprise Applications



BigTwin®: Leading Multi-node Architectures

- Highly configurable 2U 4-node and 2U 2-node systems
- 3rd Gen Intel® Xeon® Scalable processors, 2 per node, up to 270W TDP
- 16 DIMMs + 4 Intel Optane Persistent Memory 200 series per node

Ultra: High Performance & Flexibility for Enterprise

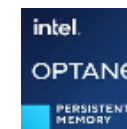
- Optimized for highest processor TDPs
- Up to 22 hybrid NVMe and up to 3 double width GPUs
- PCI-E 4.0 support with 64 lanes per socket; Total 128 lanes
- Dual 3rd Gen Intel® Xeon® Scalable processors up to 270W and 32 DIM slots for maximum memory capacity

SuperBlade: Highest Density x86 Multi-Node

- Up to 20 hot-pluggable nodes
- Optimized for performance and advanced networking



2U 4-Node
SYS-220BT-H Series



8U SuperBlade
SBE-820H/C/J/L-822/622/422

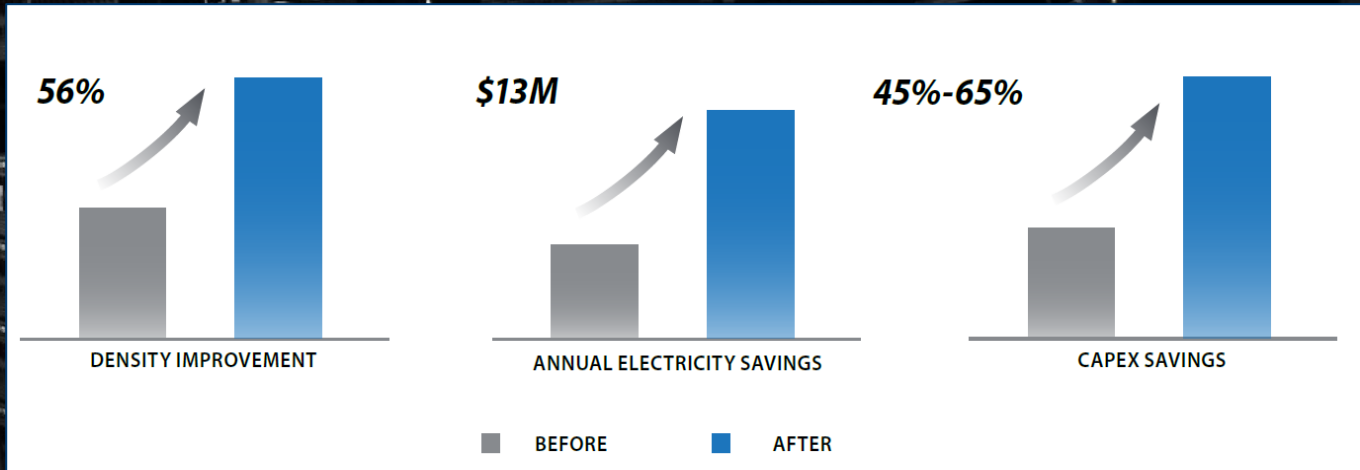


Supermicro Servers Helps Intel Data Center Deliver Energy Efficient & Reliable IT infrastructure

Industry leading PUE **1.06**

Over **200,000** SuperBlade and MicroBlade

88% energy efficiency improvement





X12 for Intelligent Cloud Infrastructure



CloudDC: All-in-one Rackmount Platform for Cloud Data Centers

- Tool-less design, configurable I/O and 16 DDR4-3200MHz DIMMs up to 4TB
- Dual AIOM slots (OCP 3.0 compliant), 4-12 SATA/SAS drive bays with optional full NVMe supports
- Versatile and compact 2U system that supports up to two double-width GPUs in a 25.5" (648 mm) chassis
- Rich security features with TPM1 1.2/2.0, silicon root of trust, secured boot and Runtime FW Protection

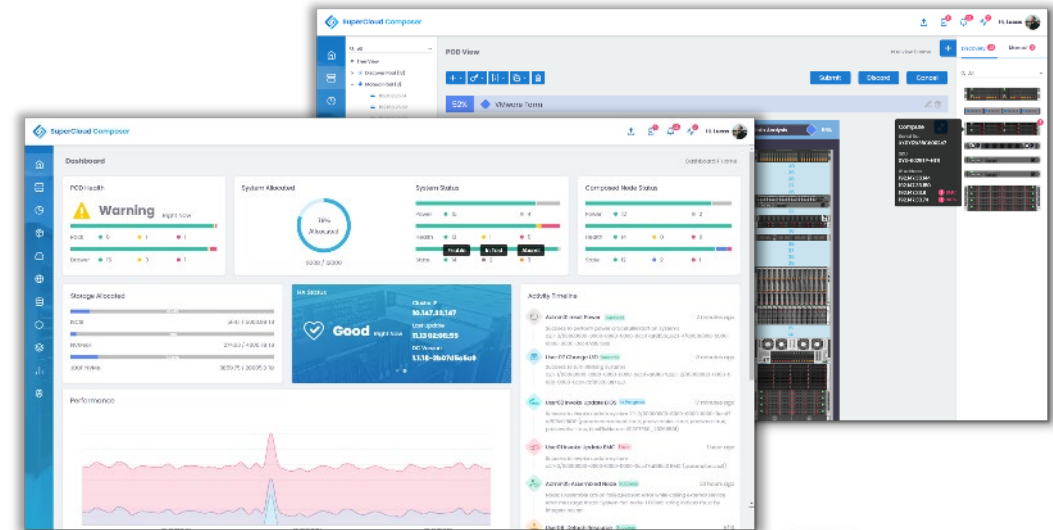


2U CloudDC
 SYS-620C-TN12R
 12x 3.5" NVMe/SAS/SATA



SCC: Intelligent Server & Data Center Management

- Monitor and manage Supermicro and 3rd party systems in a single unified console
- Data analytics, BIOS management, network provisioning, high level visualization, lifecycle & asset management, and more.



Performance and Flexibility for AI/ML and HPC

GPU with PCI-E:

- High performance AI/ML and HPC-optimized solution
- Optimized for graphics and rendering applications
- Double the CPU to GPU throughput with PCI-E 4.0
- Dual socket 3rd Gen Intel® Xeon® Scalable processors up to 270W

GPU with HGX A100:

- Dense and scalable multi-GPU powerhouse supports the latest HGX A100 8 SXM4 GPUs
- Next generation of NVIDIA NVLink™, with double the GPU-to-GPU direct bandwidth, almost 10X higher than PCI-E 4.0
- New NVIDIA NVSwitch™ that is 2X faster than the previous generation



4U 10-GPU
SYS-420GP-TNR

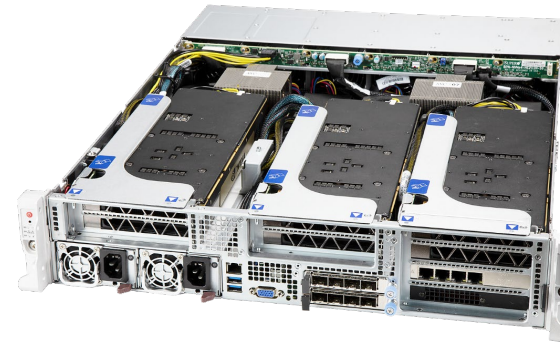


4U HGX A100 8-GPU
SYS-420GP-TNAR(+)



Hyper-E: Best-in-class Performance and Flexibility Rackmount Server

- High performance and highly configurable 2U system with short depth and front I/O, with DC power and NEBS Level 3 options
- Dual 3rd Gen Intel® Xeon® Scalable processors up to 270W and 32 DIMM slots
- Lightning-fast storage with the latest generation PCI-E 4.0 NVMe SSDs and networking flexibility with AIOM (OCP 3.0 compliant) NIC support



2U Hyper-E
SYS-220HE-FTNRD



Edge/IoT/Embedded: High-performance Portfolio with Compact Form Factors

- High-density processing power at the Edge
- Connecting the intelligent world from devices to the cloud
- Low-power high-efficiency computing
- Compact form factors



1U Short-Depth, Front I/O
SYS-210P-FRDN6T



A photograph of a modern, multi-story office building with a curved facade and large glass windows. A prominent red vertical sign with a white 'T' logo stands in the foreground. The sky is clear and blue. The building has several cars parked in front, and a glass-enclosed entrance is visible.

Supermicro Edge server helped T-Systems to build reliable EdgAIR connection for 5G ORAN

Reliable connectivity in critical high-speed applications
(**less than 3s'** downtime a month)
AI inference at the edge



Supermicro X12 Systems



Comprehensive Portfolio Powered by Intel 3rd Gen Intel[®] Xeon[®] Scalable Processors



BigTwin[®]

Highly Modular Multi-Node Systems with Tool-less Design



Ultra and Ultra-E

High Performance & Flexibility Rackmount Systems for Enterprise Applications



CloudDC

All-in-one Rackmount Platforms for Cloud Data Centers



Super Blade[®]

High Density x86 Multi-node Server for Enterprise Cloud, HPC



SuperStorage[®]

Top-loading Server Optimized for Field Serviceability and Field Replacement



PCIe GPU Servers

High Density Systems for Double-width, Full Length PCIe GPUs



HGX GPU Servers

High Performance and Flexibility with Advanced Architecture and Thermal Design



Mainstream

Versatile Entry Level and Volume Servers for Enterprise Applications



Hyper-E and Hyper

Best-in-Class Performance and Flexibility Rackmount Servers



FatTwin[®]

Advanced Multi-node 4U Twin Architecture with 8 or 4 Nodes



TwinPro[®]

Cost-effective 2U Multi-node Platforms



MP 4-Way Server

Highest Performance and Flexibility for Enterprise Applications



SuperWorkstations

Workstations for High Performance Workloads



WIO

Industry's Widest Variety of I/O Optimized Servers



IOT/Embedded

High-efficiency, High-performance Compact Form Factor for 5G and Edge computing



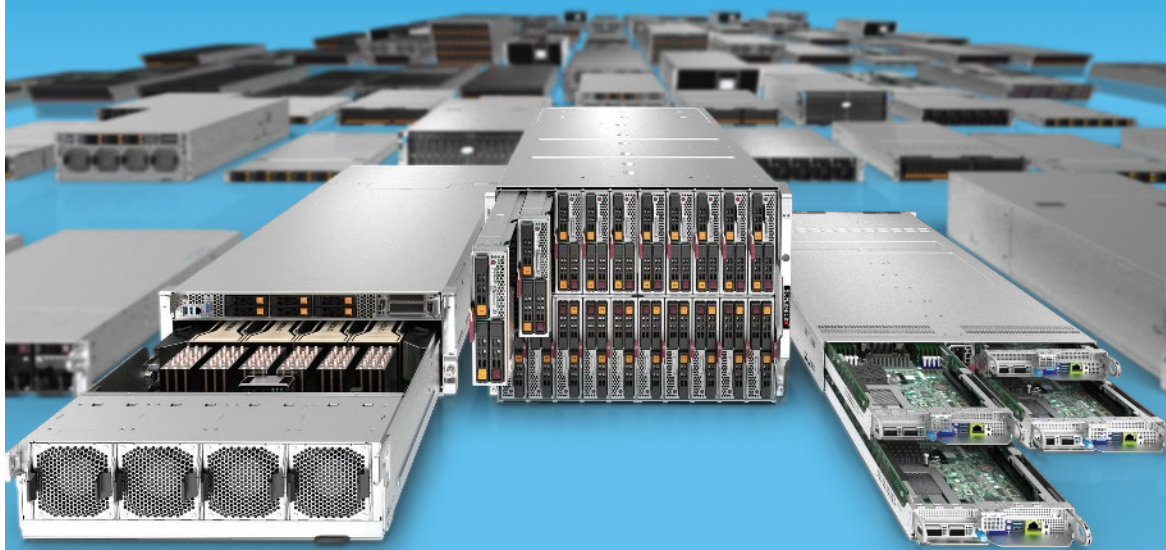


Performance Begins Now



X12 Server Solutions

Supporting 3rd Gen Intel® Xeon®
Scalable Processors



Better

Better Performance Per Watt and Per Dollar

Faster

40%-60% Better Performance on Cloud Workloads


Greener

Reduced Environmental Impact & Lower TCO





Start Now - Early Access Program



JumpStart Your Future

Supermicro JumpStart program offers remote access to our next-gen X12 systems for your validation testing and benchmarking! You can get access to production-ready 3rd Gen Intel® Xeon® Scalable processor-based Supermicro systems.

Visit [supermicro.com/x12](https://www.supermicro.com/x12) to start





More Information



Go to www.supermicro.com/x12 and the channel portal to explore:

- X12 brochure
- 3D Virtual Booth
- TechTalk videos
- Detailed product specs
- And more..





More Information



Register for upcoming product deep-dives:

Supermicro Blade Solutions Channel Update

- Tuesday, May 4
- 10.30 CEST
- Sign up: <https://primetime.bluejeans.com/a2m/register/wvcydbbg>

Supermicro UP Solutions Channel Update

- Tuesday, May 11
- 16.00 CEST
- Sign up: <https://primetime.bluejeans.com/a2m/register/fczzugds>





More Information



- Kunbin Hong – Director of Solutions
 - kunbinhong@supermicro.com
- Tatiana Babina – Channel Marketing
 - tatianab@supermicro.com
- For sales related questions contact your Account Manager





Thank you!

www.supermicro.com





DISCLAIMER

Super Micro Computer, Inc. may make changes to specifications and product descriptions at any time, without notice. The information presented in this document is for informational purposes only and may contain technical inaccuracies, omissions and typographical errors. Any performance tests and ratings are measured using systems that reflect the approximate performance of Super Micro Computer, Inc. products as measured by those tests. Any differences in software or hardware configuration may affect actual performance, and Super Micro Computer, Inc. does not control the design or implementation of third party benchmarks or websites referenced in this document. The information contained herein is subject to change and may be rendered inaccurate for many reasons, including but not limited to any changes in product and/or roadmap, component and hardware revision changes, new model and/or product releases, software changes, firmware changes, or the like. Super Micro Computer, Inc. assumes no obligation to update or otherwise correct or revise this information.

SUPER MICRO COMPUTER, INC. MAKES NO REPRESENTATIONS OR WARRANTIES WITH RESPECT TO THE CONTENTS HEREOF AND ASSUMES NO RESPONSIBILITY FOR ANY INACCURACIES, ERRORS OR OMISSIONS THAT MAY APPEAR IN THIS INFORMATION.

SUPER MICRO COMPUTER, INC. SPECIFICALLY DISCLAIMS ANY IMPLIED WARRANTIES OF MERCHANTABILITY OR FITNESS FOR ANY PARTICULAR PURPOSE. IN NO EVENT WILL SUPER MICRO COMPUTER, INC. BE LIABLE TO ANY PERSON FOR ANY DIRECT, INDIRECT, SPECIAL OR OTHER CONSEQUENTIAL DAMAGES ARISING FROM THE USE OF ANY INFORMATION CONTAINED HEREIN, EVEN IF SUPER MICRO COMPUTER, Inc. IS EXPRESSLY ADVISED OF THE POSSIBILITY OF SUCH DAMAGES.

ATTRIBUTION

© 2021 Super Micro Computer, Inc. All rights reserved.



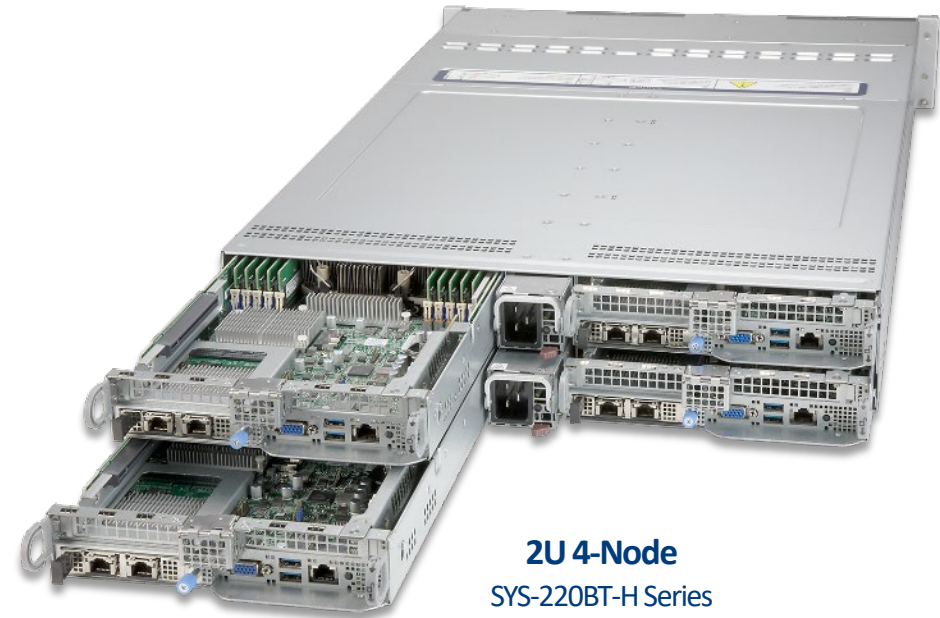


Appendix: X12 Product Detail



Leading Multi-node Architectures

- Highly configurable 2U 4-node and 2U 2-node systems
- 3rd Gen Intel® Xeon® Scalable processors, 2 per node, up to 270W TDP
- All-hybrid hot-swappable drive bays - NVMe, SAS or SATA (2.5" or 3.5" drives) - Up to 12 NVMe drives per node.
- 16 DIMMs + 4 Intel Optane Persistent Memory 200 series per node
- PCI-E 4.0 AIOM (OCP 3.0 compliant) networking - 1 per node



2U 4-Node
SYS-220BT-H Series



Key Applications

- Enterprise Server
- Hyper-Converged Storage
- Virtualization
- AI training/Inferencing
- Big Data Analytics
- Cloud Computing
- CDN
- In-memory Database



All-in-one Rackmount Platform for Cloud Data Centers



2U CloudDC

SYS-620C-TN12R

12x 3.5" NVMe/SAS/SATA



Key Applications

- Cloud Computing
- Web Servers
- Hyper-converged Storage
- Virtualization
- File Servers
- Head-node Computing
- 5G Telco AI Inferencing

- Tool-less design, configurable I/O and 16 DDR4-3200MHz DIMMs up to 4TB
- Dual AIOM slots (OCP 3.0 compliant) for flexible networking plus 4-12 SATA/SAS drive bays with optional full NVMe support in selected SKUs
- Highly versatile and compact 2U system that supports up to two double-width GPUs in a 25.5" (648 mm) chassis
- Rich security features with TPMI 1.2/2.0, silicon root of trust, secured boot and Runtime FW Protection



High Performance & Flexibility Enterprise Applications

- Optimized for highest processor TDPs
- Up to 22 hybrid NVMe
- Up to 3 double width GPUs
- PCI-E 4.0 support with 64 lanes per socket; Total 128 lanes
- Dual 3rd Gen Intel® Xeon® Scalable processors up to 270W and 32 DIM slots for maximum memory capacity



2U Ultra-E
SYS-220-MTNR



Key Applications

- HCI
- HPC
- CDN
- Hybrid Cloud, Container-as-a-Service
- Cloud Computing
- Big Data Analytics
- Back-up and Recovery
- Scale-Out Storage



Highest Density x86 Multi-Node for Enterprise Cloud & HPC

8U:

- Up to 20 hot-pluggable nodes
- Optimized for performance and advanced networking
- Integrated 200G HDR InfiniBand with non-blocking switch

6U:

- Up to 10 hot-pluggable nodes
- Performance and memory optimized architecture

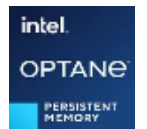
4U:

- Up to 14 hot-pluggable nodes
- Optimized for performance, density and value



8U SuperBlade

SBE-820H/C/J/L-822/622/422



Key Applications

- HPC
- Hybrid Cloud
- EDA
- Virtualization
- Health
- Financial Services





4U 10-GPU
SYS-420GP-TNR



Key Applications

- AI/ML
- Deep Learning Training and Inference
- High-performance Computing (HPC)
- Rendering Platform for High-end Professional Graphics
- Best-in-Class VDI Infrastructure Platform

Performance and Flexibility for AI/ML and HPC

- High performance AI/ML and HPC-optimized solution
- Optimized for graphics and rendering applications
- Double the CPU to GPU throughput with PCI-E 4.0
- Dual socket Intel® Xeon® Scalable processors up to 270W
- NVIDIA GPUs supported
- NVIDIA certified system



Performance and Flexibility for AI/ML and HPC

- Dense and scalable multi-GPU powerhouse supports the latest HGX A100 8 SXM4 GPUs
- Next generation of NVIDIA NVLink™, with double the GPU-to-GPU direct bandwidth, almost 10X higher than PCI-E 4.0
- New NVIDIA NVSwitch that is 2X faster than the previous generation
- Networking up to 200G, GPUDirect RDMA and GPUDirect Storage
- AIOM slot (OCP 3.0 compliant) support
- NVIDIA certified system



4U HGX A100 8-GPU
SYS-420GP-TNAR(+)



Key Applications

- AI/ML
- Deep Learning Training and Inference
- High-performance
- Computing (HPC)
- Building Block for Scalable AI Infrastructure

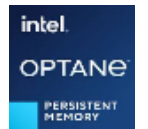


Application-optimized High-Performance Storage

- New generation top-loading server optimized for field serviceability and field replacement
- PCI-E 4.0 storage controller with hardware RAID and IT mode
- Tool-less hot-swappable drive bays supporting 3.5 and 2.5" media
- Flexible mix of hybrid HDD and SSD drive bays for best performance and TCO
- Superior pullout drive drawer design
- Hot swappable nodes, expanders, drives, power supplies and fans



4U 90x Top-Loading
SSG-640P-E1CR90



Key Applications

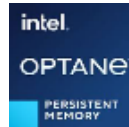
- Object Storage
- Data Intensive HPC/AI
- Private & Hybrid Cloud
- Backup & Active Archive



Versatile Entry Level and Volume Servers for Enterprise



4U/Tower
SYS-740P-TR(T)



Key Applications

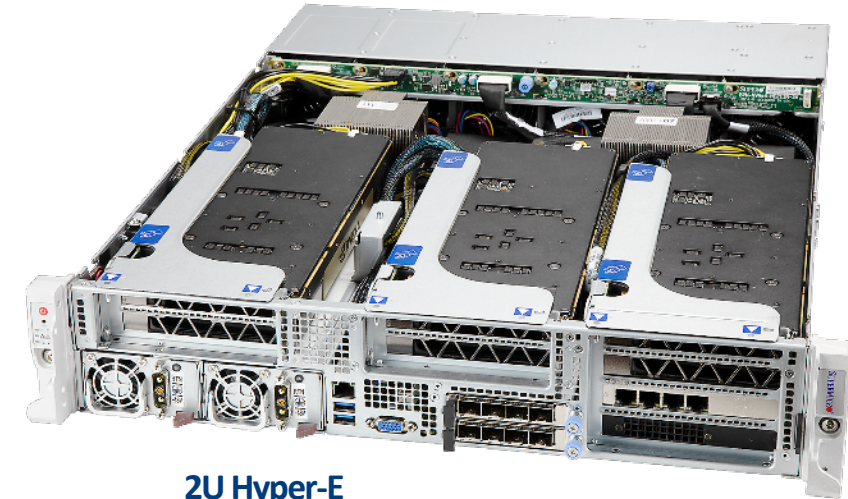
- SMB
- Virtualization
- Web Server
- AI - Inferencing
- Cloud Computing
- Head-node Computing

- Highly versatile servers to enable a wide variety of enterprise server applications
- Choices of multiple form factors including rackmount and tower
- A rich selection of storage and memory speed support
- 4 PCI-E 4.0 x16 and 2 PCI-E 4.0 x8 expansion slots
- On-board networking options 2x 10G or 1x 1G Ethernet for networking
- Dual 3rd Gen Intel® Xeon® Scalable processors up to 270W and 32 DIM slots for maximum memory capacity



Best-in-class Performance and Flexibility Rackmount Servers

- High performance 1U & 2U systems with rear I/O and front I/O configurations to meet today's data center requirements
- Dual 3rd Gen Intel® Xeon® Scalable processors up to 270W and 32 DIMM slots for maximum memory capacity
- Lightning-fast storage with the latest generation PCI-E 4.0 NVMe SSDs and networking flexibility with AIOM (OCP 3.0 compliant) NIC support
- Tool-less system design features intended to simplify field serviceability and lower maintenance time



2U Hyper-E
SYS-220HE-FTNRD



Key Applications

- 5G Core and Edge
- Telecom Micro Data Center
- Enterprise Server
- Cloud Computing
- Big Data Analytics
- Hyperconverged Storage
- AI Inference and Machine Learning
- Network Function Virtualization



Advanced Multi-node 4U Twin Architecture with 8 and 4 Nodes

- Highly configurable 4U 8-node and 4-node systems
- Front accessible service design for cold-aisle serviceability
- Hot-swappable drive bays – interchangeable NVMe, SAS or SATA
- Better thermal with new optimized airflow designs for up to 165W processors
- Dual 3rd Gen Intel® Xeon® Scalable processors up to 270W and 16 DIM slots for maximum memory capacity



4U 8-Node
SYS-F610P2-RTN



Key Applications

- Hyperscale / Hyperconverged
- Cloud Optimized Servers
- Data Center Enterprise Applications
- Scale out of Storage expansion
- Telecom Data Center & ETSI certified
- Virtualization Server



Cost-effective 2U Multi-node Platforms



4 DP Nodes in 2U
SYS-220TP-H



Key Applications

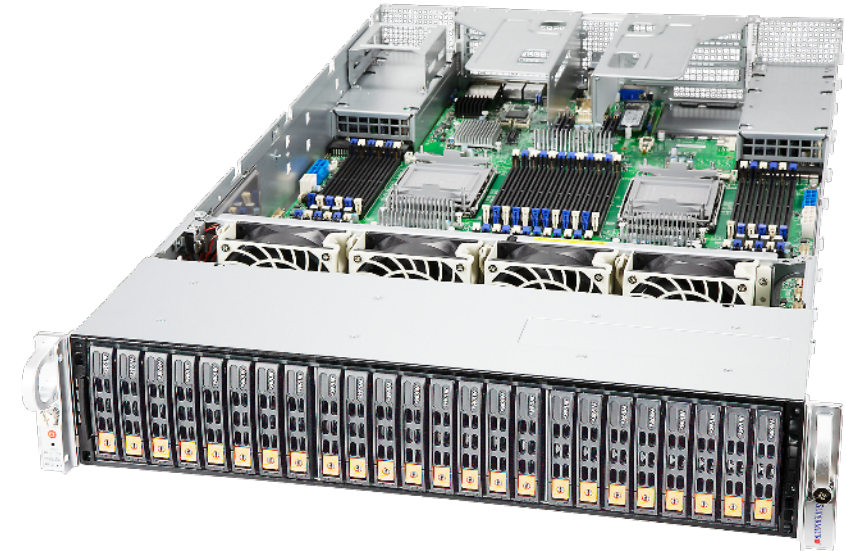
- Enterprise Mission-critical Applications
- Data Center Cloud Computing
- HPC
- Virtualization
- Big Data
- Financial Analysis

- Dual socket supported. TDP up to 185W, 2 UPI
- 16 DIMM slots. Up to 4TB ECC RDIMM/ LRDIMM DDR4-3200MHz
- Support up to 6 hot-swappable SAS/SATA and 2 internal M.2 NVMe SSDs per node
- Onboard dual 10GbE RJ45 ports with Intel® X710-AT2 controller
- 2 PCI-E 4.0 x16 LP expansion slots and 1 PCI-E 4.0 x8 (M.2)
- 2 Redundant 2200W Titanium Level (96%) power supplies



Performance and Flexibility for Enterprise Applications

- Large memory footprint for up to 18TB
- All hybrid hot-swappable drive bay - NVMe, SAS, or SATA
- Supports 3rd Gen Intel® Xeon® Scalable (Cooper Lake) processors
- Support for PCI-E 3.0 for network interface cards
- SAP HANA Certified System – SAP HANA 1.0 SPS 12, SAP HANA 2.0



2U Memory Performance
SYS-240P-TNRT



Key Applications

- Artificial Intelligence (AI)
- Business Intelligence
- ERP
- CRM
- Scientific Virtualization
- In-Memory Database
- HCI
- SAP HANA



Advanced Multi-node 4U Twin Architecture with 8 and 4 Nodes

- Mid-tower and 4U tower with support for 3rd Gen Intel® Xeon® Scalable processors
- Mid-tower with up to 4 internal 3.5” SATA drives and 2 onboard M.2 slots, optional 4x 2.5” drive carrier (for total of 8 drives) and optional NVMe drive support
- 4U tower with 8 hot-swappable 3.5”/2.5” SATA drive bays and 2 onboard M2 slots, optional SAS and NVMe drive support.



4U Tower
SYS-740A-T



Key Applications

- Rendering
- Multimedia Digital Content Creation
- CAD
- Engineering/Scientific Research





2U UP WIO
SYS-520P-WTR



Industry's Widest Variety of I/O Optimized Servers

- Cost-effective systems supporting up to 6 PCI-E 4.0 devices
- Hot-swappable 2.5" or 3.5" SATA3 storage
- Onboard networking dual 10 Gigabit Ethernet
- Up to 4 NVMe hybrid storage supported optionally
- 3rd Gen Intel® Xeon® Scalable processors up to 270W and 8 DIM slots for maximum memory capacity

Key Applications

- Enterprise Applications
- Networking Appliance
- Firewall / Security Appliances
- General Purpose Computing
- Cloud Computing
- Media Entertainment



High-performance Portfolio with Compact Form Factors



UP Short-Depth, Front I/O

SYS-210P-FRDN6T



Key Applications

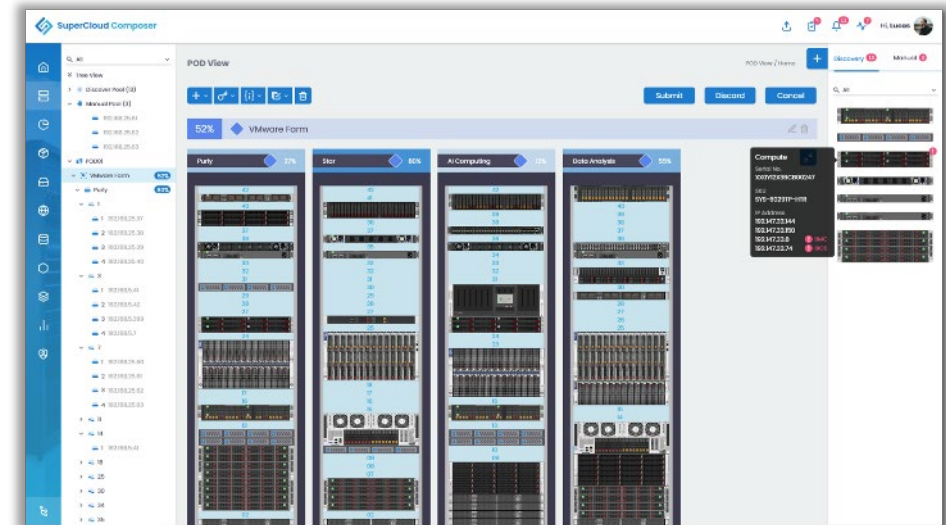
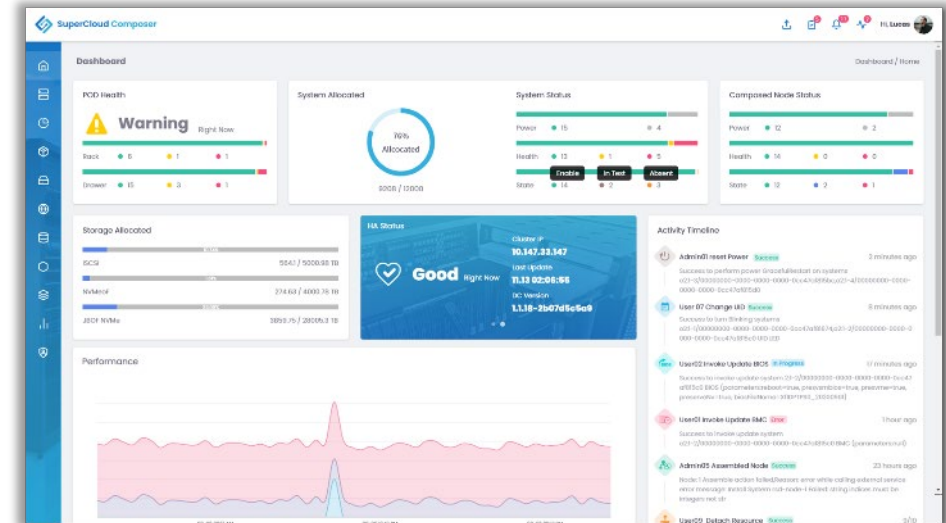
- Cloud Computing
- 5G Core and Edge
- Network Function Virtualization

- High-density processing power at the Edge
- Connecting the intelligent world from devices to the cloud
- Low-power high-efficiency computing
- Long life cycle
- Compact form factors



Compose Disaggregated Infrastructure Quickly and Effortlessly

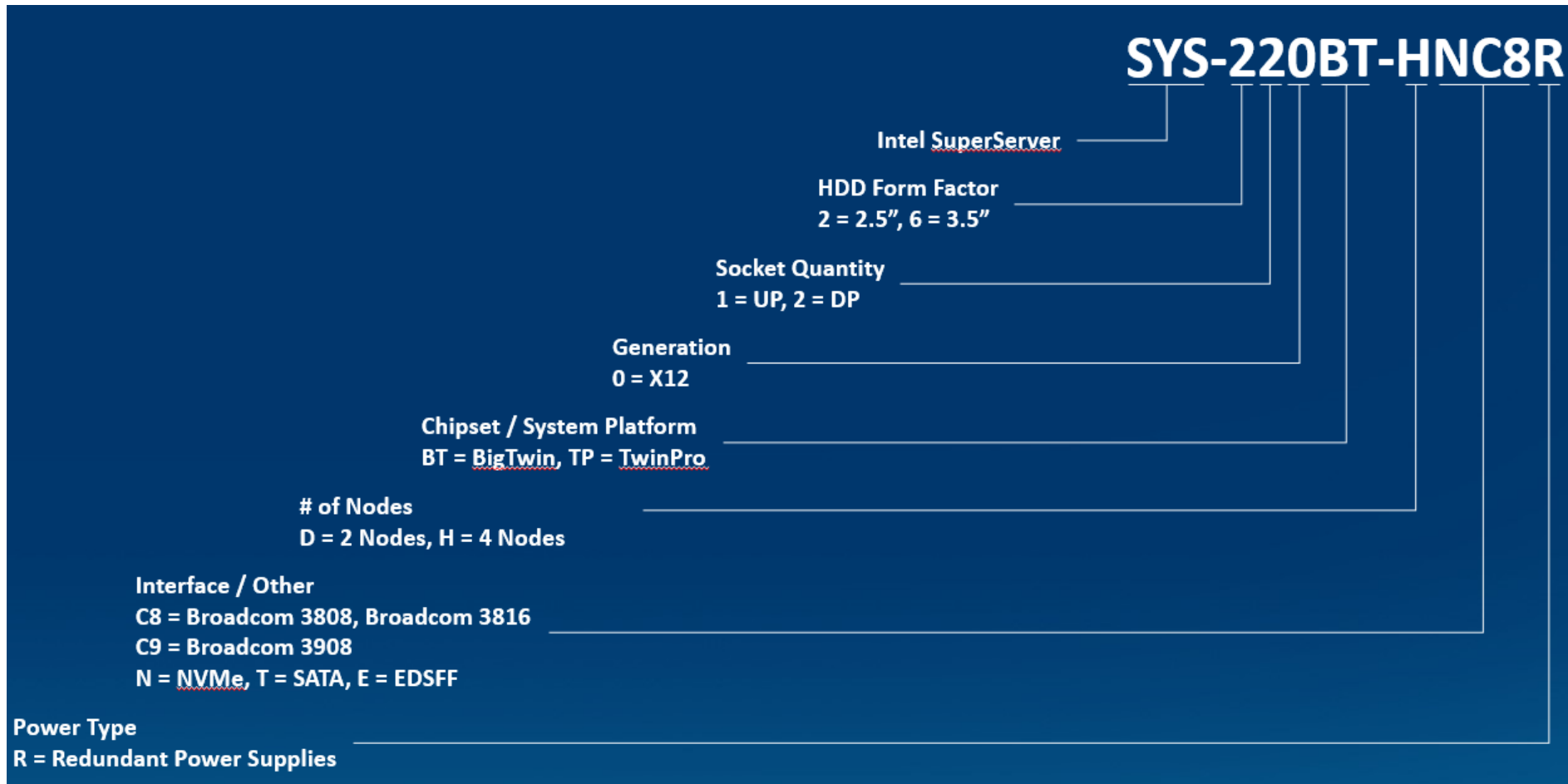
- Monitor and manage Supermicro servers and third-party systems with a single unified console
- Data analytics
- Management
 - Update BIOS and BMC FW
 - Update BIOS configuration
 - Hardware and firmware inventory
- Top of rack network provisioning
- POD view provides high level visualization to for rack management.
- Network topology
- Telemetry, alert and log
- Lifecycle/asset management





Appendix: Product Naming Rule

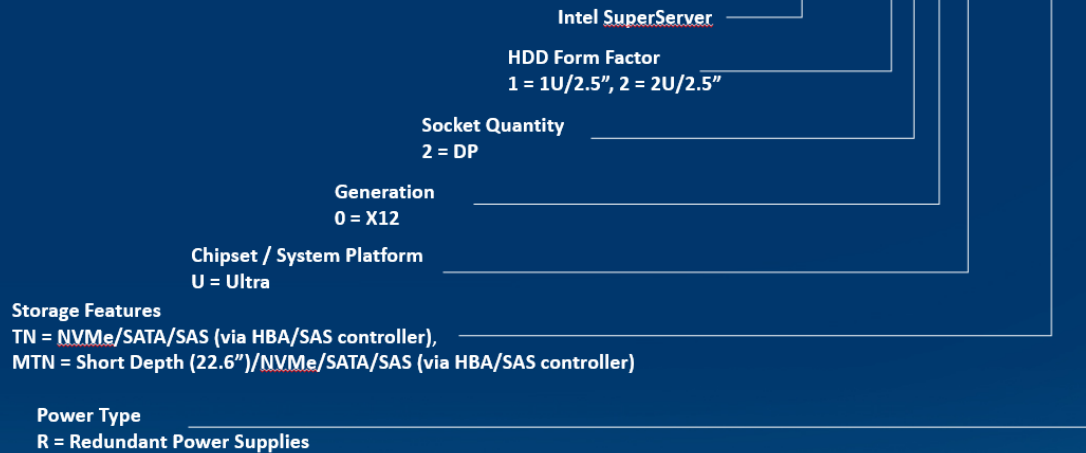




X12 BigTwin

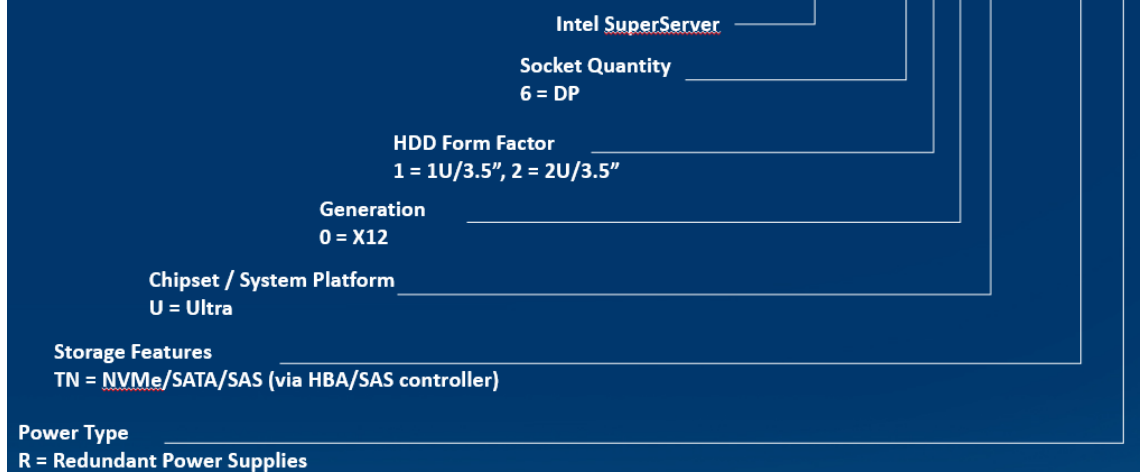


SYS - 120U - TNR



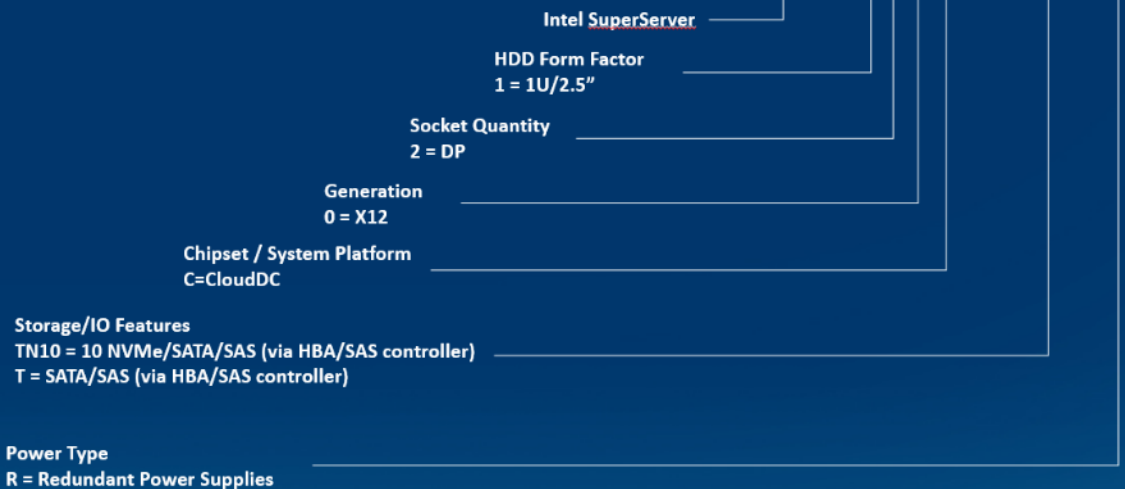
X12 Ultra – 2.5" HDD

SYS - 620U - TNR

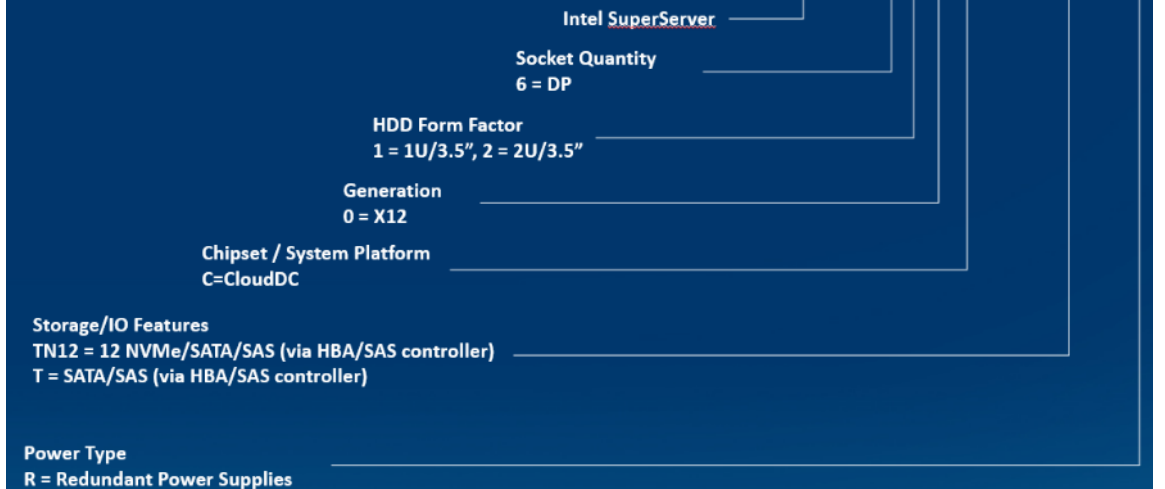


X12 Ultra – 3.5" HDD

SYS - 120C - TN10R

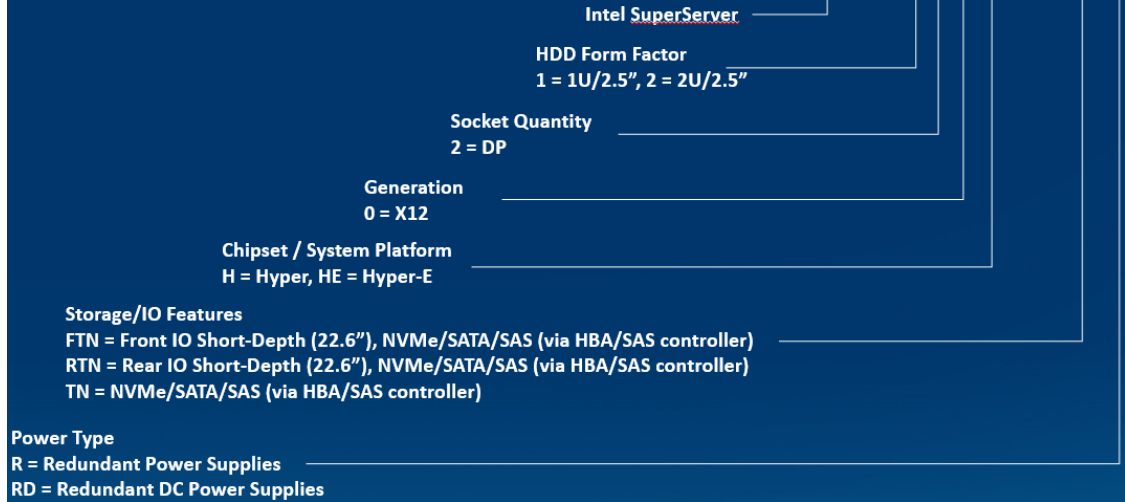


SYS - 620C - TN12R



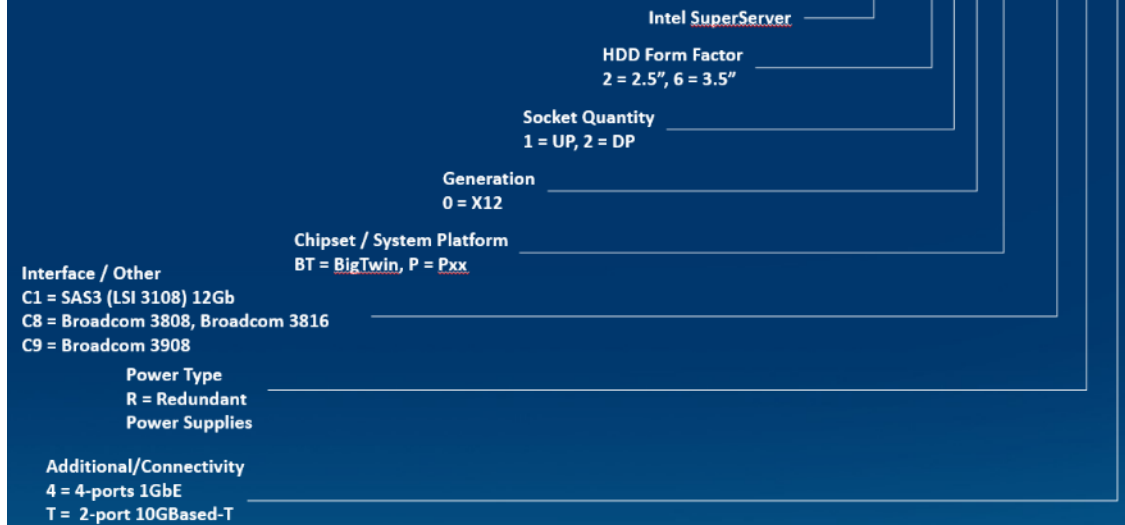
X12 Server Naming Guidelines

SYS - 120H - TNR



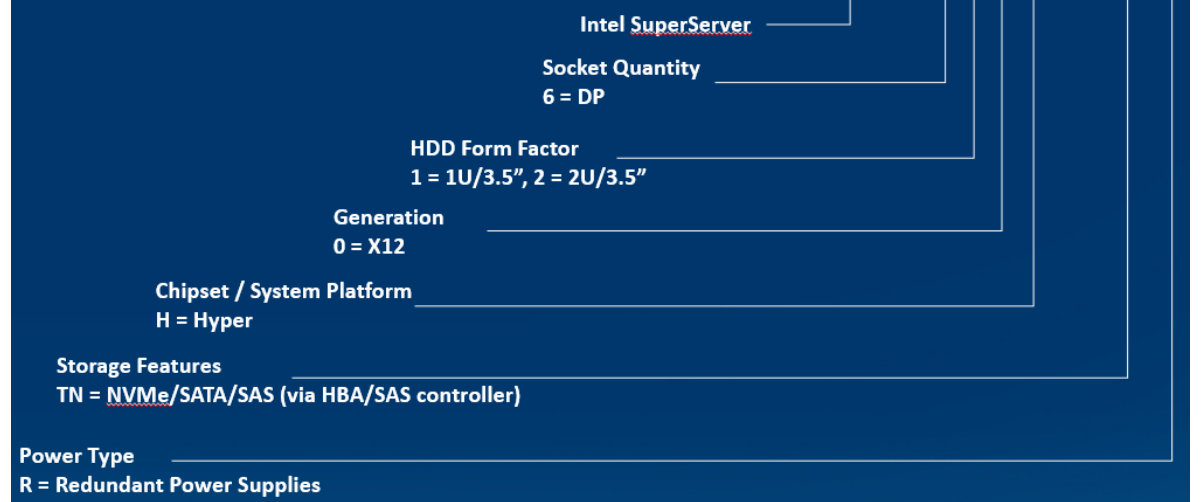
X12 Hyper – 2.5" HDD

SYS-220P-C9RT



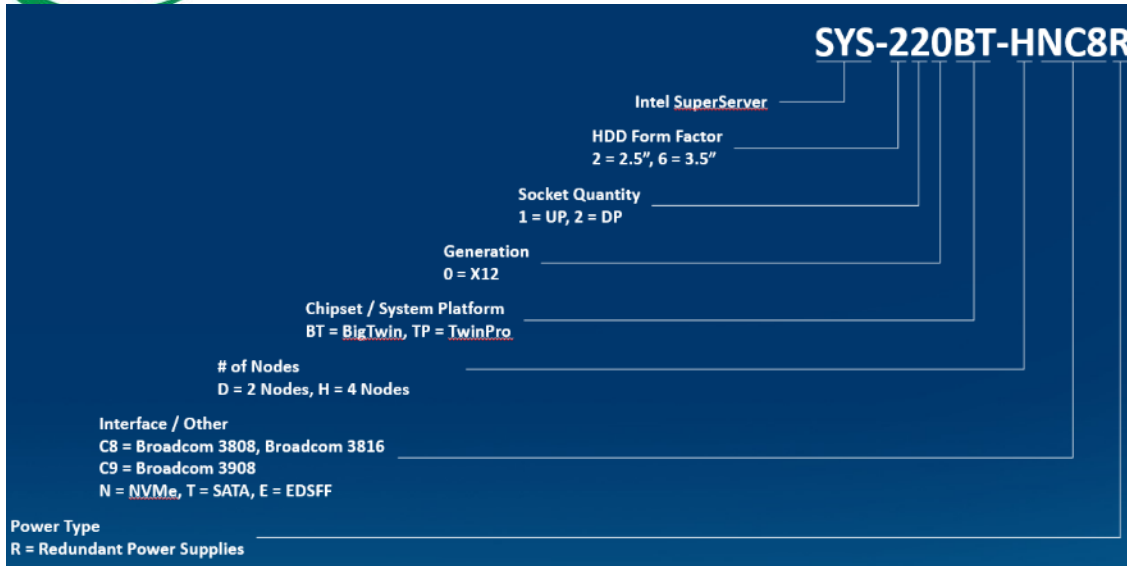
X12 Mainstream

SYS - 620H - TNR

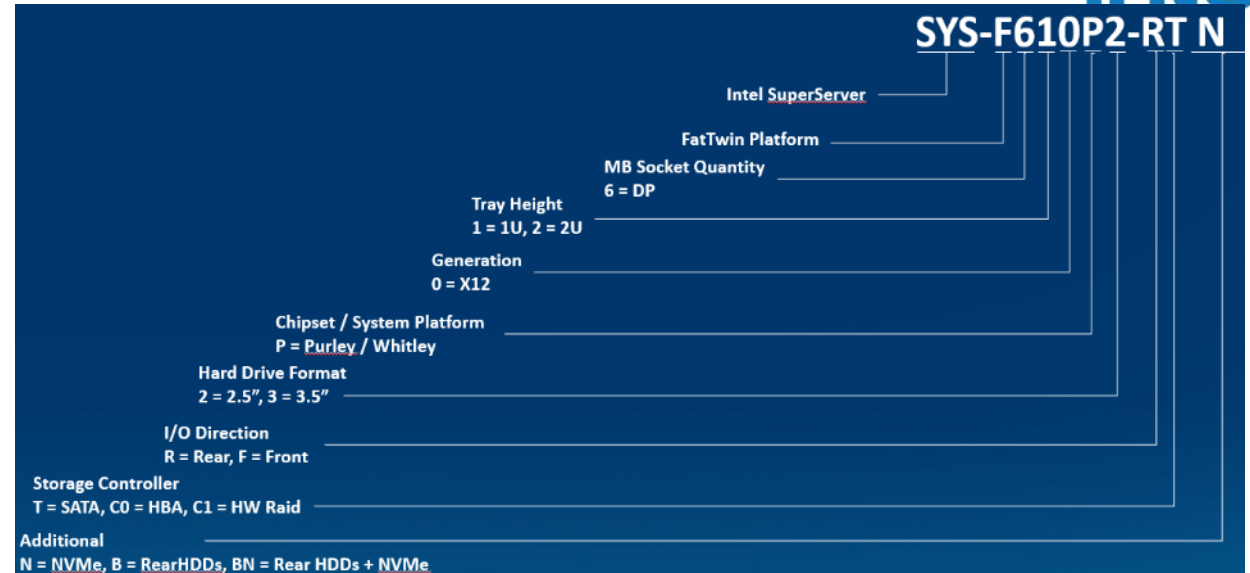


X12 Hyper – 3.5" HDD

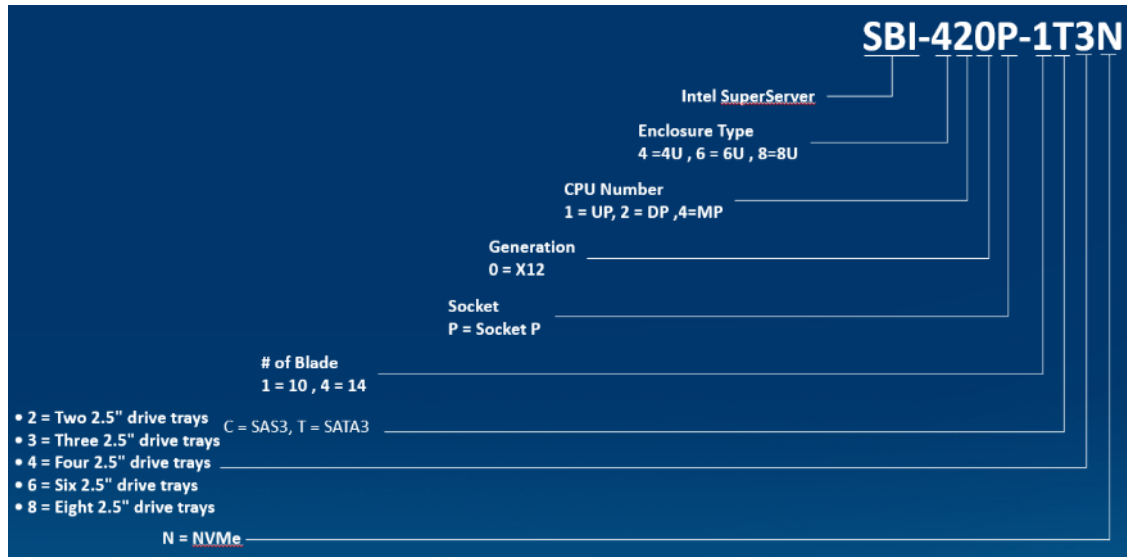




X12 BigTwin

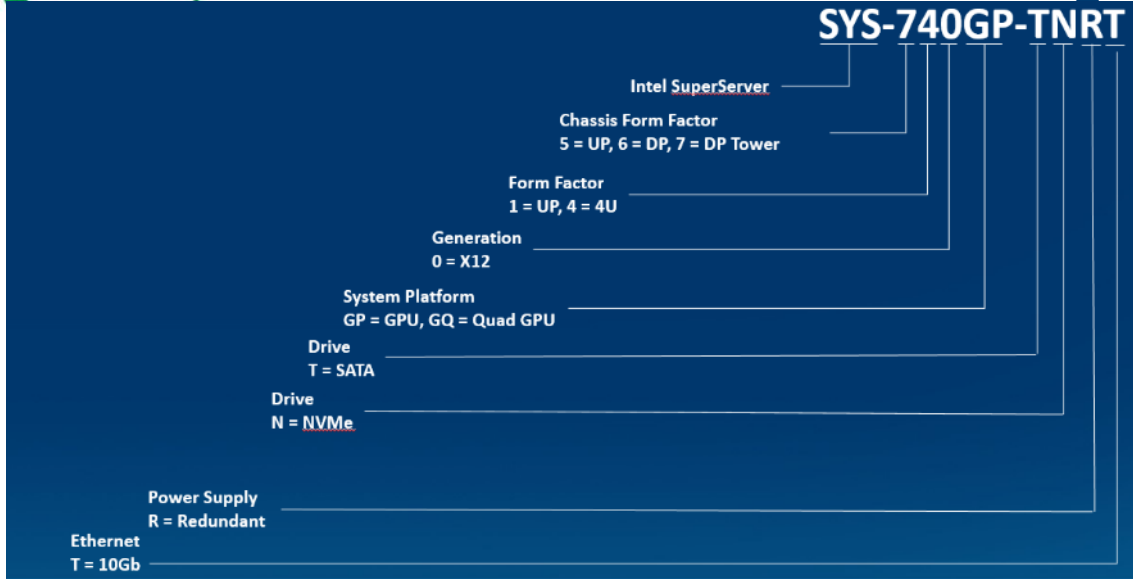


X12 FatTwin

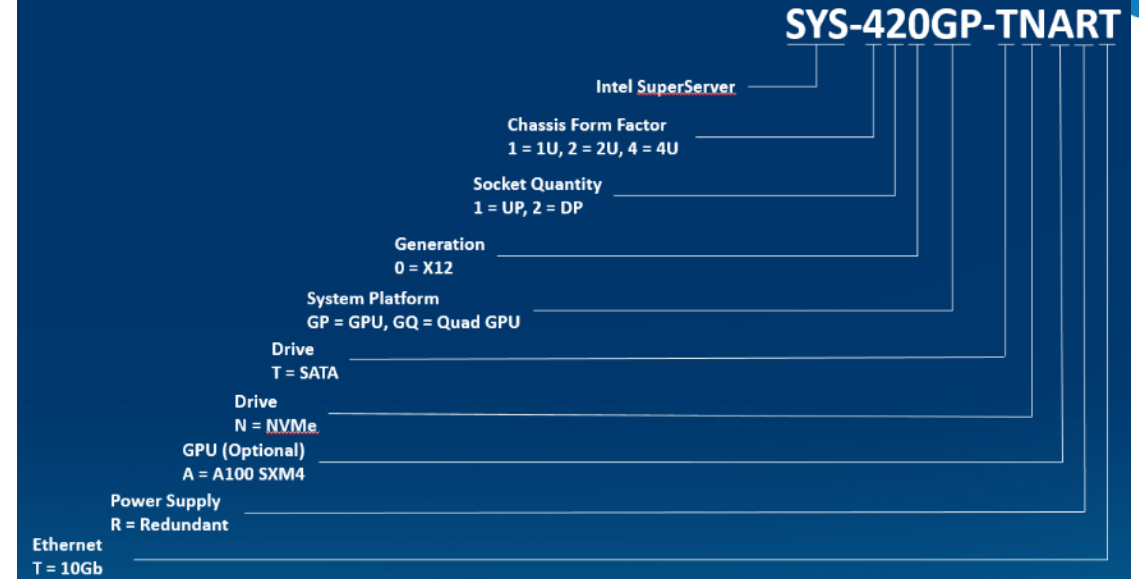


X12 Blade

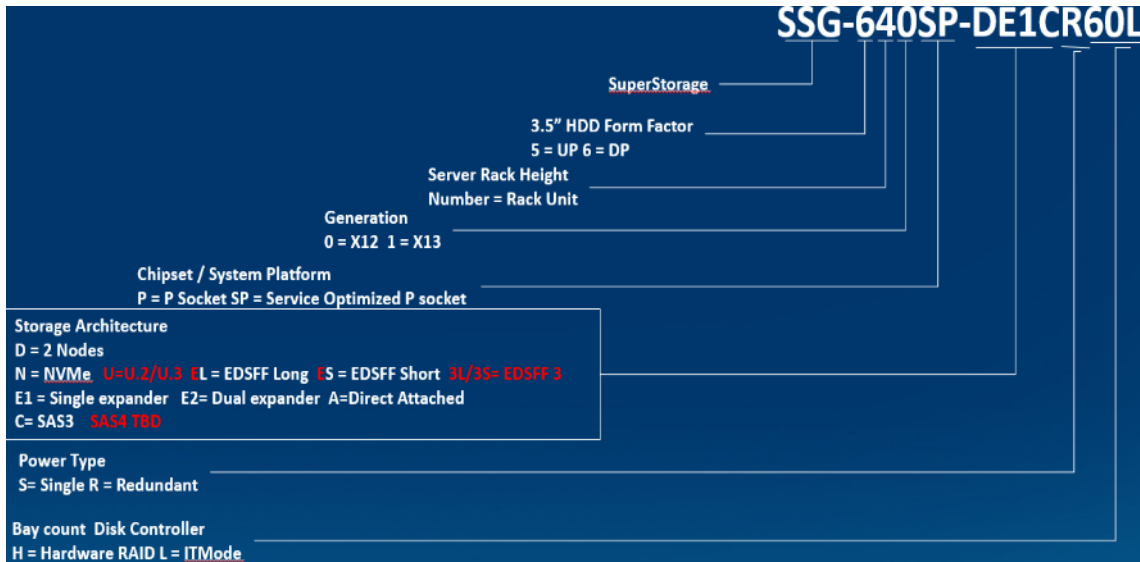




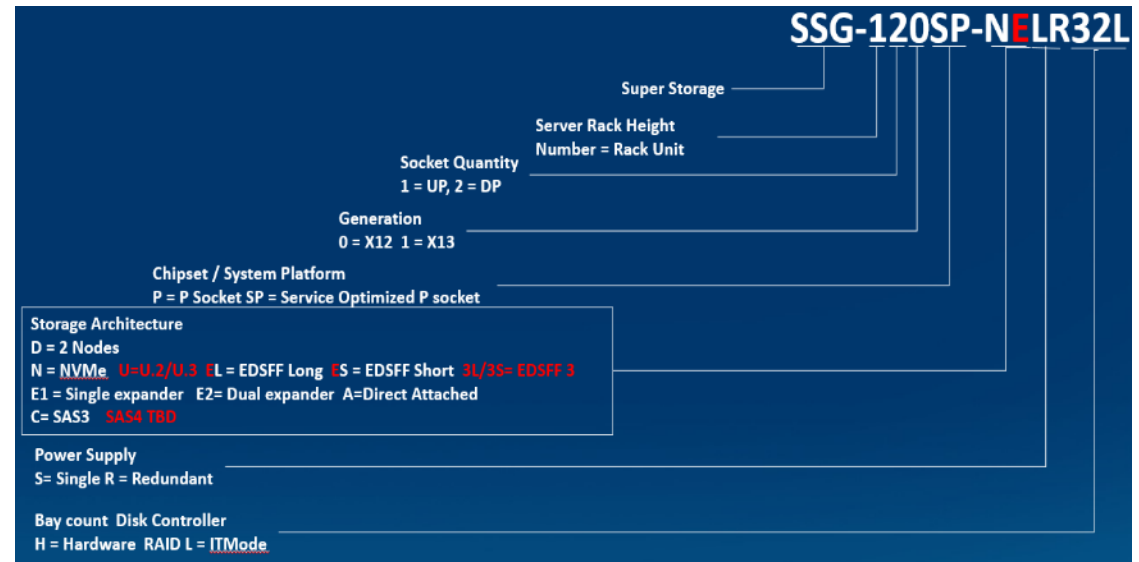
X12 GPU 3.5"



X12 GPU 2.5



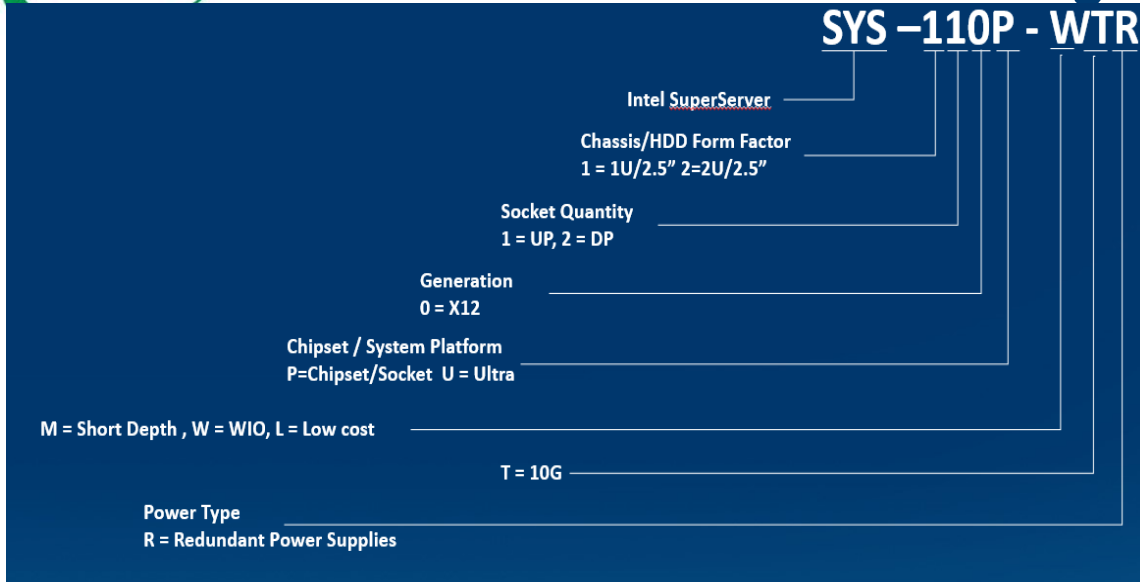
X12 Superstorage 3.5"



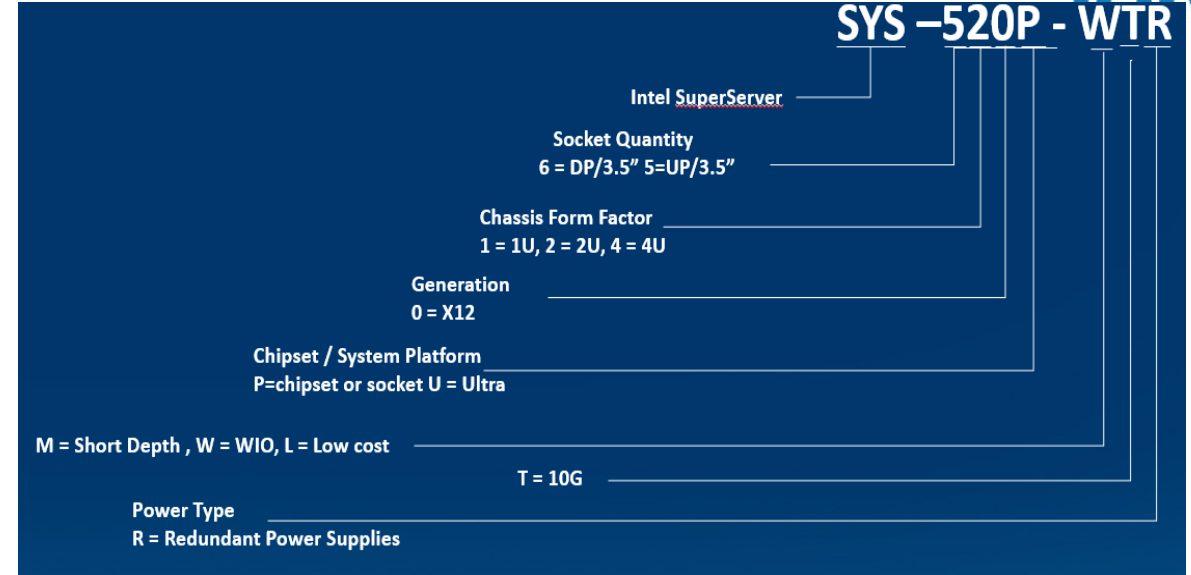
X12 Superstorage 2.5"



X12 Server Naming Guidelines



X12 UP 2.5"

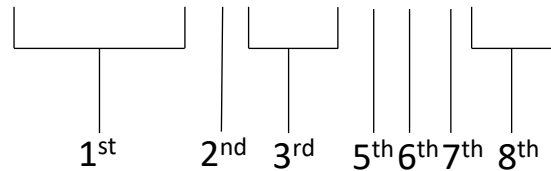


X12 UP 3.5"



AIOM Naming Convention

AOC-ATG-i2T2S



Character	Representation	Options
1st	Product Family	AOC: Add On Card
2nd	Form Factor	S: Standard, P: Proprietary, C: MicroLP, M: Super IO Module (SIOM), MH: SIOM Hybrid A: Advanced IO Module (AIOM), AH: AIOM Hybrid
3rd	Product Type/Speed	G: GbE (1Gb/s), TG: 10GbE (10Gb/s), 25G: 25GbE (25Gb/s), 40G: 40GbE (40Gb/s), 50G: 50GbE (50Gb/s), 100G: 100GbE (100Gb/s), IBE: EDR IB (100Gb/s), HFI: Host Fabric Interface
4th	Chipset Model (Optional)	N: Niantec (82599), P: Powerville (i350), S: Sageville (X550), F: Fortville (XL710/X710), L: Lewisburg (PCH)
5th	Chipset Manufacturer	i: Intel, m: Mellanox, b: Broadcom
6th	Number of Ports	1: 1 port, 2: 2 ports, 4: 4 ports, 8: 8 ports
7th	Connector Type (Optional)	S: SFP/SFP+/SFP28, T: 10GBase-T, Q: QSFP+, C: QSFP28
8th	2 nd Controller/Connector Type (Optional)	G: 1x GbE RJ45, 2G: GbE 2x RJ45, S: 1x 10G SFP+, T: 10GBase-T, 2T: 2x 10GBase-T, 2S: 2x SFP+

