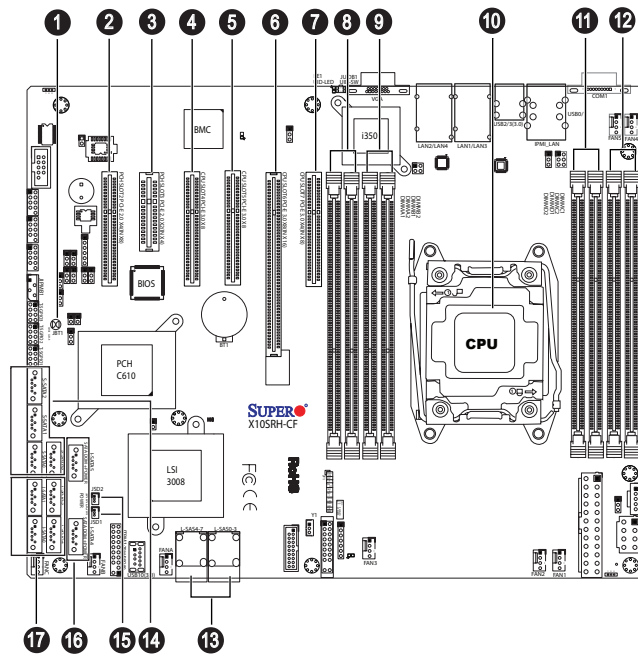


SUPERMICR[®] SuperServer 5048R-E1CR36L Quick Reference Guide

Board Layout

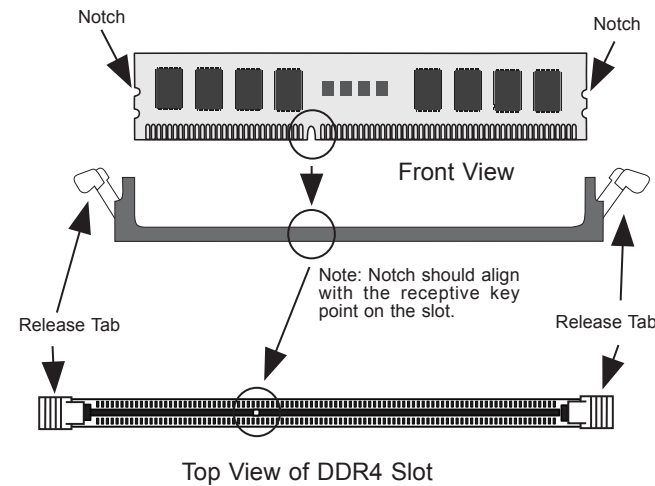


No.	Description
1	JBT1 = CMOS Clear
2	PCH Slot2 PCI-E 2.0 x4 (in x8)
3	PCH Slot3 PCI-E 2.0 x2 (in x4)
4	CPU Slot4 PCI-E 3.0 x8
5	CPU Slot5 PCI-E 3.0 x8
6	CPU Slot6 PCI-E 3.0 x8 (in x8)
7	CPU Slot7 PCI-E 3.0 x4 (in x8)
8	DIMMA1 (BLUE)/DIMMA2 slot
9	DIMMB1 (BLUE)/DIMMB2 slot
10	CPU
11	DIMMD1 (BLUE)/DIMMD2 slot
12	DIMMC1 (BLUE)/DIMMC2 slot
13	L-SAS 0~3, 4~7: SAS 3.0 Ports (supported by LSI 3008 controller)
14	S-SATA 0~3: SATA 3.0 Ports
15	JSD1/JSD2 = SATA DOM (Device on Module) Power Connectors
16	I-SATA 4~5: SATA DOM (Device on Module) Ports
17	I-SATA 0~3: SATA 3.0 Ports

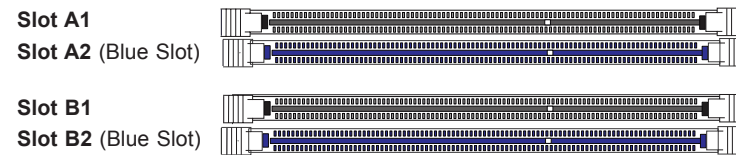
Beep Codes

Beep Code/LED	Message	Description
1 beep	Refresh	Circuits have been reset. (Ready to power up)
5 short beeps + 1 long beep	Memory	No memory detected
8 long beeps	Display memory read/write status	Video adapter missing or with faulty memory
OH LED On	System OH	System Overheat

Memory



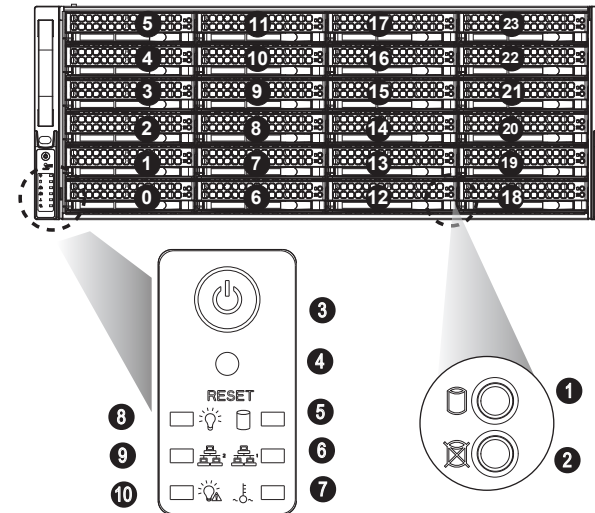
↑ Towards the edge of the motherboard



Recommended Population (Balanced)

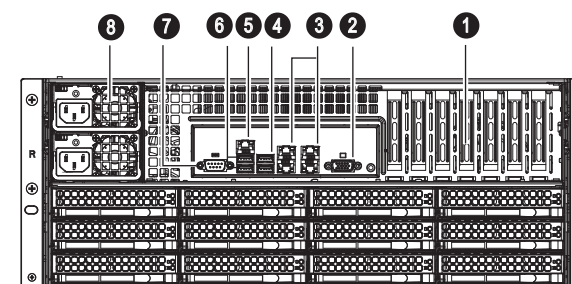
DIMMA1	DIMMA2	DIMMB1	DIMMB2	DIMMC1	DIMMC2	DIMMD1	DIMMD2	Total Memory
2GB	2GB							4GB
2GB	2GB	2GB	2GB					8GB
2GB	2GB	2GB	2GB	2GB	2GB			12GB
2GB	2GB	2GB	2GB	2GB	2GB	2GB	2GB	16GB
4GB	4GB							8GB
4GB	4GB	4GB	4GB					16GB
4GB	4GB	4GB	4GB	4GB	4GB			24GB
4GB	4GB	4GB	4GB	4GB	4GB	4GB	4GB	32GB
8GB	8GB							16GB
8GB	8GB	8GB	8GB					32GB
8GB	8GB	8GB	8GB	8GB	8GB			64GB
8GB	8GB	8GB	8GB	8GB	8GB	8GB	8GB	128GB
16GB	16GB							32GB
16GB	16GB	16GB	16GB					64GB
16GB	16GB	16GB	16GB	16GB	16GB			96GB
16GB	16GB	16GB	16GB	16GB	16GB	16GB	16GB	128GB
32GB	32GB							64GB
32GB	32GB	32GB	32GB					128GB
32GB	32GB	32GB	32GB	32GB	32GB			192GB
32GB	32GB	32GB	32GB	32GB	32GB	32GB	32GB	256GB

Front View & Interface



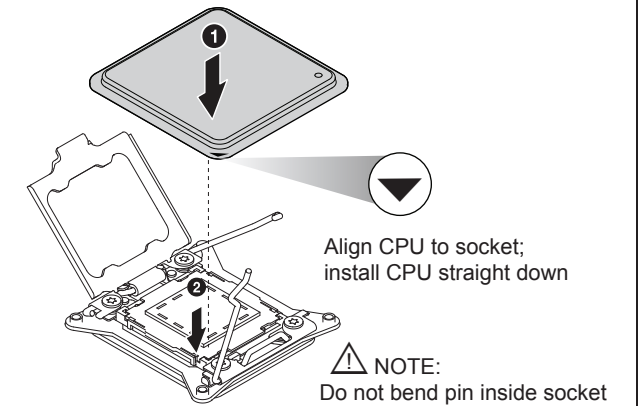
No.	Description
1	Hard Drive Signal
2	Hard Drive Fail
3	Power Button
4	Reset Button
5	Device Activity LED
6	LAN1 LED
7	Overheat & Fan Fail LED
8	Power LED
9	LAN2 LED
10	Power Failure LED

Rear View

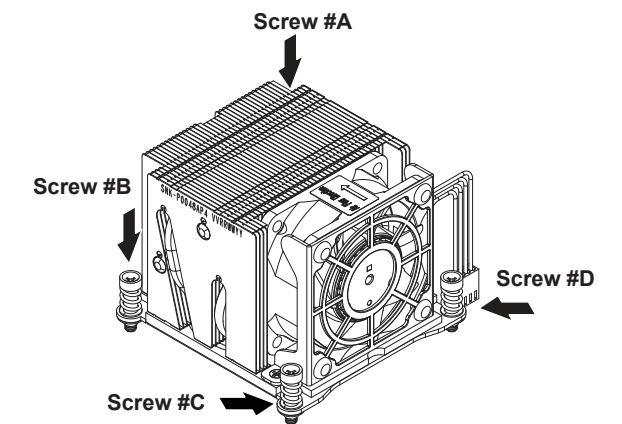


No.	Description
1	7 Low-profile PCI Slots
2	VGA Port
3	GbE LAN1/LAN2/LAN3/LAN4 Ports
4	USB 3.0 (2~3 Ports)
5	Dedicated LAN for IPMI
6	USB 2.0 (0~1 Ports)
7	COM1 Port
8	Redundant Power Supply Modules

CPU Installation



Heatsink Installation



- Place the heatsink on top of the installed CPU.
- Align the four screws to the socket.
- Holding the heatsink in place, screw down as shown (cross pattern, in order: A, C, B, D).
- Note: Only use 6-8 lb/ft of torque; otherwise, hand-tighten each screw to avoid damaging the CPU.

Caution

SAFETY INFORMATION
 IMPORTANT: See installation instructions and safety warning before connecting system to power supply.
http://www.supermicro.com/about/policies/safety_information.cfm

WARNING:
 To reduce risk of electric shock/damage to equipment, disconnect power from server by disconnecting all power cords from electrical outlets.
 If any CPU socket empty, install protective plastic CPU cap

CAUTION:
 Always be sure all power supplies for this system have the same power output. If mixed power supplies are installed, the system will not operate.

For more information go to :
<http://www.supermicro.com/support>

