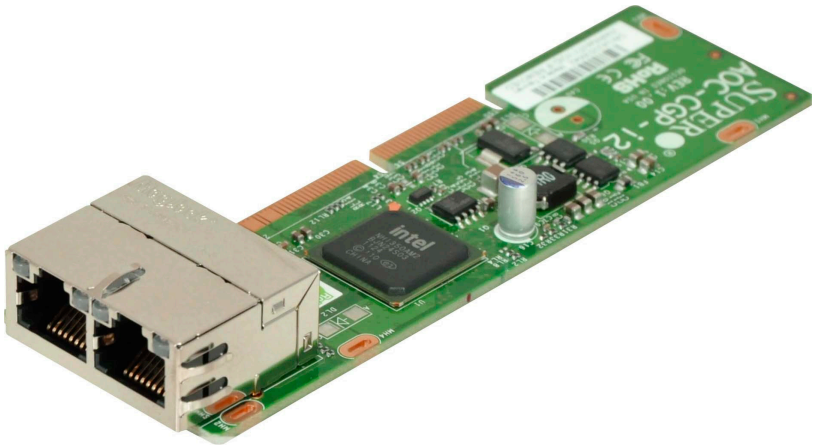




# AOC-CGP-i2



## User's Guide

Revision 1.0a

---

The information in this user's guide has been carefully reviewed and is believed to be accurate. The vendor assumes no responsibility for any inaccuracies that may be contained in this document, and makes no commitment to update or to keep current the information in this user's guide, or to notify any person or organization of the updates. **Please Note: For the most up-to-date version of this user's guide, please see our Website at [www.supermicro.com](http://www.supermicro.com).**

Super Micro Computer, Inc. ("Supermicro") reserves the right to make changes to the product described in this user's guide at any time and without notice. This product, including software and documentation, is the property of Supermicro and/or its licensors, and is supplied only under a license. Any use or reproduction of this product is not allowed, except as expressly permitted by the terms of said license.

IN NO EVENT WILL SUPER MICRO COMPUTER, INC. BE LIABLE FOR DIRECT, INDIRECT, SPECIAL, INCIDENTAL, SPECULATIVE OR CONSEQUENTIAL DAMAGES ARISING FROM THE USE OR INABILITY TO USE THIS PRODUCT OR DOCUMENTATION, EVEN IF ADVISED OF THE POSSIBILITY OF SUCH DAMAGES. IN PARTICULAR, SUPER MICRO COMPUTER, INC. SHALL NOT HAVE LIABILITY FOR ANY HARDWARE, SOFTWARE, OR DATA STORED OR USED WITH THE PRODUCT, INCLUDING THE COSTS OF REPAIRING, REPLACING, INTEGRATING, INSTALLING OR RECOVERING SUCH HARDWARE, SOFTWARE, OR DATA.

---

Any disputes arising between the manufacturer and the customer shall be governed by the laws of Santa Clara County in the State of California, USA. The State of California, County of Santa Clara shall be the exclusive venue for the resolution of any such disputes. Supermicro's total liability for all claims will not exceed the price paid for the hardware product.

---

FCC Statement: This equipment has been tested and found to comply with the limits for a Class A digital device pursuant to Part 15 of the FCC Rules. These limits are designed to provide reasonable protection against harmful interference when the equipment is operated in a commercial environment. This equipment generates, uses, and can radiate radio frequency energy and, if not installed and used in accordance with the manufacturer's instruction manual, may cause harmful interference with radio communications. Operation of this equipment in a residential area is likely to cause harmful interference, in which case you will be required to correct the interference at your own expense.

---

California Best Management Practices Regulations for Perchlorate Materials: This Perchlorate warning applies only to products containing CR (Manganese Dioxide) Lithium coin cells. "Perchlorate Material-special handling may apply. See [www.dtsc.ca.gov/hazardouswaste/perchlorate](http://www.dtsc.ca.gov/hazardouswaste/perchlorate)".

---



**WARNING:** This product can expose you to chemicals including lead, known to the State of California to cause cancer and birth defects or other reproductive harm. For more information, go to [www.P65Warnings.ca.gov](http://www.P65Warnings.ca.gov).

User's Guide Revision 1.0a

Release Date: August 1, 2019

Unless you request and receive written permission from Super Micro Computer, Inc., you may not copy any part of this document.

Information in this document is subject to change without notice. Other products and companies referred to herein are trademarks or registered trademarks of their respective companies or mark holders.

Copyright © 2019 by Super Micro Computer, Inc.  
All rights reserved.

**Printed in the United States of America**

## Preface

### About this User's Guide

This user's guide is written for system integrators, PC technicians, and knowledgeable PC users. It provides information for the installation and use of the AOC-CGP-i2 add-on card.

### About this Add-on Card

MicroLP adapters, the latest innovation from Supermicro, are designed to fit in the smallest spaces of dense systems. Based on the latest Intel® i350 Ethernet controller, the AOC-CGP-i2 contains advanced features for superior virtualization and application performance. It also provides industry leading power management capabilities to reduce power consumption. This adapter is an ideal solution for customers who are looking to expand network connectivity for dense Twin and MicroCloud server systems.

### An Important Note to the User

All images and layouts shown in this user's guide are based upon the latest PCB Revision available at the time of publishing. The card you have received may or may not look exactly the same as the graphics shown in this user's guide.

### Returning Merchandise for Service

A receipt or copy of your invoice marked with the date of purchase is required before any warranty service will be rendered. You can obtain service by calling your vendor for a Returned Merchandise Authorization (RMA) number. When returning the motherboard to the manufacturer, the RMA number should be prominently displayed on the outside of the shipping carton, and the shipping package is mailed prepaid or hand-carried. Shipping and handling charges will be applied for all orders that must be mailed when service is complete. For faster service, You can also request a RMA authorization online (<http://www.supermicro.com>).

This warranty only covers normal consumer use and does not cover damages incurred in shipping or from failure due to the alternation, misuse, abuse or improper maintenance of products.

During the warranty period, contact your distributor first for any product problems.

## Conventions Used in the User's Guide

Pay special attention to the following symbols for proper system installation and to prevent damage to the system or injury to yourself:

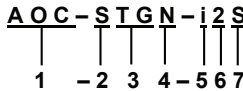


**Warning:** Important information given to ensure proper system installation or to prevent damage to the components or injury to yourself.



**Note:** Additional information given to differentiate between various models or provides information for correct system setup.

## Naming Convention



Character	Representation	Options
1st	Product Family	AOC: Add On Card
2nd	Form Factor	U: UIO, S: Standard, P: Proprietary, C: MicroLP
3rd	Product Type/Speed	G: GbE (1Gb/s), TG: 10GbE (10Gb/s), 40G: 40GbE (40Gb/s), 100G: 100GbE (100Gb/s), IBF: IB FDR (56Gb/s), IBQ: IB QDR (40Gb/s), INF: InfiniBand DDR (20Gb/s)
4th	Chipset Model (Optional)	N: Niantec (82599), P: Powerville (i350)
5th	Chipset Manufacturer	i: Intel, m: Mellanox, b: Broadcom
6th	Number of Ports	1: 1 port, 2: 2 ports, 4: 4 ports
7th	Connector Type (Optional)	S: SFP+, T: 10GBase-T, Q: QSFP+

## SMC Networking Add-on Cards

Model	Type	Form Factor	Controller	Connection	Dimension (w/o Brackets) (L x H)	Power (W)
AOC-MQP-i2	GbE	SIOM	Intel® i350 AM2	2 RJ45 (1Gb/port)	3.622" (92mm) x 3.428" (87.08mm)	3.7
AOC-MQP-i4	GbE	SIOM	Intel® i350 AM4	4 RJ45 (1Gb/port)	3.622" (92mm) x 3.428" (87.08mm)	4.4
AOC-MTGN-i2S	10GbE	SIOM	Intel® 82599ES	2 SFP+ (10Gb/port)	3.622" (92mm) x 3.428" (87.08mm)	7.2
AOC-MTG-i4S	10GbE	SIOM	Intel® XL710-BM1	4 SFP+ (10Gb/port)	3.622" (92mm) x 3.428" (87.08mm)	7
AOC-MTG-b2T	10GbE	SIOM	Broadcom® BCM57416	2 RJ45 (10GBase-T)	3.622" (92mm) x 3.428" (87.08mm)	11
AOC-MTG-i2T	10GbE	SIOM	Intel® X550-AT2	2 RJ45 (10GBase-T)	3.622" (92mm) x 3.428" (87.08mm)	13
AOC-MTG-i4T	10GbE	SIOM	2x Intel® X550-AT2	4 RJ45 (10GBase-T)	3.622" (92mm) x 3.428" (87.08mm)	26
AOC-MHIBF-m1Q2G	FDR IB GbE	SIOM	Mellanox® ConnectX-3 Pro Intel® i350	1 QSFP (56Gb/port) 2 RJ45 (1Gb/port)	3.622" (92mm) x 3.428" (87.08mm)	9
AOC-MHIBF-m2Q2G	FDR IB GbE	SIOM	Mellanox® ConnectX-3 Pro Intel® i350	2 QSFP (100Gb/port) 2 RJ45 (1Gb/port)	3.622" (92mm) x 3.428" (87.08mm)	11
AOC-MHIBE-m1CG	EDR IB GbE	SIOM	Mellanox® ConnectX-4 VPI Intel® i210	1 QSFP28 (100Gb/port) 1 RJ45 (1Gb/port)	3.622" (92mm) x 3.428" (87.08mm)	19
AOC-MH25G-b2S2G	25GbE	SIOM	Broadcom® BCM57414 Intel® i350	2 SFP28 (25Gb/port) 2 RJ45 (1Gb/port)	3.622" (92mm) x 3.428" (87.08mm)	9
AOC-MH25G-m2S2T	25GbE	SIOM	Mellanox® ConnectX-4 Lx EN Intel® X550-AT2	2 SFP28 (25Gb/port) 2 RJ45 (10GBase-T)	3.622" (92mm) x 3.428" (87.08mm)	25
AOC-M25G-m4S	25GbE	SIOM	Mellanox® ConnectX-4 Lx EN	4 SFP28 (25Gb/port)	3.622" (92mm) x 3.428" (87.08mm)	20
AOC-M25G-i2S	25GbE	SIOM	Intel® XXV710	2 SFP28 (25Gb/port)	3.622" (92mm) x 3.428" (87.08mm)	11.8
AOC-MHFI-i1C	Omni-Path	SIOM	Intel® OP HFI A SIC (Wolf River WFR-B)	1 QSFP28 (100Gb/port)	3.622" (92mm) x 3.428" (87.08mm)	15

Model	Type	Form Factor	Interface	Controller	Connection	Dimension (wo Brackets) (L x H)	Power (W)
AOC-SGP-i2	GbE	Standard LP	PCI-E x4	Intel® i350 AM2	2 RJ45 (10Gb/port)	3.9" (99mm) x 2.73" (69mm)	3.5
AOC-SGP-i4	GbE	Standard LP	PCI-E x4	Intel® i350 AM4	4 RJ45 (10Gb/port)	3.9" (99mm) x 2.73" (69mm)	5
AOC-STG-i2T	10GbE	Standard LP	PCI-E x8	Intel® X540-AT2	2 RJ45 (10GBase-T)	5.8" (150mm) x 2.73" (69mm)	13
AOC-STGS-i1T	10GbE	Standard LP	PCI-E x4	Intel® X550-AT	1 RJ45 (10GBase-T)	5.9" (150mm) x 2.73" (69mm)	9
AOC-STGS-i2T	10GbE	Standard LP	PCI-E x4	Intel® X550-AT2	2 RJ45 (10GBase-T)	5.9" (150mm) x 2.73" (69mm)	11
AOC-STG-b2T	10GbE	Standard LP	PCI-E x8	Broadcom® BCM57416	2 RJ45 (10GBase-T)	5.8" (142mm) x 2.73" (69mm)	13.1
AOC-STG-i4T	10GbE	Standard LP	PCI-E x8	Intel® XL710-BM1	4 RJ45 (10GBase-T)	5.9" (149mm) x 2.73" (69mm)	15.5
AOC-STGN-i1S	10GbE	Standard LP	PCI-E x8	Intel® 82598EN	1 SFP+ (10Gb/port)	4.0" (102mm) x 2.73" (69mm)	10
AOC-STGN-i2S	10GbE	Standard LP	PCI-E x8	Intel® 82598ES	2 SFP+ (10Gb/port)	4.0" (102mm) x 2.73" (69mm)	11.2
AOC-STGF-i2S	10GbE	Standard LP	PCI-E x8	Intel® X710-BM2	2 SFP+ (10Gb/port)	5.19" (132mm) x 2.73" (69mm)	5.6
AOC-STG-b4S	10GbE	Standard LP	PCI-E x8	Broadcom® BCM57840S	4 SFP+ (10Gb/port)	5.4" (137mm) x 2.73" (69mm)	14
AOC-STG-i4S	10GbE	Standard LP	PCI-E x8	Intel® XL710-BM1	4 SFP+ (10Gb/port)	5.9" (150mm) x 2.73" (69mm)	8
AOC-S25G-m2S	25GbE	Standard LP	PCI-E x8	Mellanox® CX-4 LX	2 SFP28 (25Gb/port)	5.8" (142mm) x 2.713" (69mm)	8.7
AOC-S25G-b2S	25GbE	Standard LP	PCI-E x8	Broadcom® BCM57414	2 SFP28 (25Gb/port)	5.6" (142mm) x 2.713" (69mm)	5.2
AOC-S25G-i2S	25GbE	Standard LP	PCI-E x8	Intel® XXV710	2 SFP28 (25Gb/port)	6.1" (155mm) x 2.713" (69mm)	7.2
AOC-S40G-i1Q	40GbE	Standard LP	PCI-E x8	Intel® XL710-BM1	1 QSFP+ (40Gb/port)	5.9" (150mm) x 2.73" (69mm)	6.5
AOC-S40G-i2Q	40GbE	Standard LP	PCI-E x8	Intel® XL710-BM2	2 QSFP+ (40Gb/port)	5.9" (150mm) x 2.73" (69mm)	7
AOC-S100G-m2C	100GbE	Standard LP	PCI-E x16	Mellanox® CX-4 EN	2 QSFP28 (100Gb/port)	6.8" (168mm) x 2.73" (69mm)	16.3
AOC-S100G-b1C	100GbE	Standard LP	PCI-E x16	Broadcom® BCM57454	2 QSFP28 (100Gb/port)	6.8" (168mm) x 2.73" (69mm)	17.8
AOC-CGP-i2	GbE	MicroLP	PCI-E x4	Intel® i350 AM2	2 RJ45 (1Gb/port)	4.48" (113mm) x 1.54" (39mm)	4
AOC-CTG-i1S	10GbE	MicroLP	PCI-E x8	Intel® 82598EN	1 SFP+ (10Gb/port)	4.85" (123mm) x 1.54" (39mm)	10
AOC-CTG-i2S	10GbE	MicroLP	PCI-E x8	Intel® 82598ES	2 SFP+ (10Gb/port)	4.85" (123mm) x 1.54" (39mm)	11
AOC-CTG-i2T	10GbE	MicroLP	PCI-E x8	Intel® X540-AT2	2 RJ45 (10GBase-T)	4.8" (123mm) x 2.71" (77mm)	13
AOC-CTGS-i2T	10GbE	MicroLP	PCI-E x4	Intel® X550-AT2	2 RJ45 (10GBase-T)	4.45" (113mm) x 1.54" (39mm)	12
AOC-C25G-m1S	25GbE	MicroLP	PCI-E x8	Mellanox® CX-4 Lx EN	1 SFP28 (28Gb/port)	4.45" (113mm) x 1.54" (39mm)	8.5

## Contacting Supermicro

### Headquarters

Address: Super Micro Computer, Inc.  
980 Rock Ave.  
San Jose, CA 95131 U.S.A.

Tel: +1 (408) 503-8000

Fax: +1 (408) 503-8008

Email: [marketing@supermicro.com](mailto:marketing@supermicro.com) (General Information)  
[support@supermicro.com](mailto:support@supermicro.com) (Technical Support)

Website: [www.supermicro.com](http://www.supermicro.com)

### Europe

Address: Super Micro Computer B.V.  
Het Sterrenbeeld 28, 5215 ML  
's-Hertogenbosch, The Netherlands

Tel: +31 (0) 73-6400390

Fax: +31 (0) 73-6416525

Email: [sales@supermicro.nl](mailto:sales@supermicro.nl) (General Information)  
[support@supermicro.nl](mailto:support@supermicro.nl) (Technical Support)  
[rma@supermicro.nl](mailto:rma@supermicro.nl) (Customer Support)

### Asia-Pacific

Address: Super Micro Computer, Inc.  
4F, No. 232-1, Liancheng Rd.  
Chung-Ho Dist, New Taipei City 235  
Taiwan, R.O.C.

Tel: +886-(2) 8226-3990

Fax: +886-(2) 8226-3991

Website: [www.supermicro.com.tw](http://www.supermicro.com.tw)

Email: [support@supermicro.com.tw](mailto:support@supermicro.com.tw) (Technical Support)

Tel: +886-(2) 8226-5990 (Technical Support)

# Table of Contents

## **Preface**

About this User's Guide .....	3
About this Add-on Card .....	3
An Important Note to the User .....	3
Returning Merchandise for Service.....	3
Conventions Used in the User's Guide .....	4
Naming Convention .....	4
SMC Networking Add-on Cards .....	4
Contacting Supermicro .....	6

## **Chapter 1 Overview**

1-1 Overview .....	1-1
1-2 Key Features .....	1-1
1-3 Specifications .....	1-1

## **Chapter 2 Hardware Components**

2-1 Add-On Card Image and Layout.....	2-1
2-2 Major Components .....	2-1
2-3 Connectors: LAN Ports and LAN LED Indicators .....	2-2
Ethernet Ports .....	2-2
GLAN Port LEDs .....	2-2

## **Chapter 3 Installation**

3-1 Static-Sensitive Devices.....	3-1
Precautions .....	3-1
Unpacking .....	3-1
3-2 Add-On Card Brackets.....	3-2
3-3 Before Installation .....	3-2
3-4 Installing the Add-on Card .....	3-3
3-5 Installing the Windows Operating System .....	3-3
3-6 Installing the Linux Operating System .....	3-4
Build a Binary RPM Package.....	3-4
3-7 Building the Driver Manually .....	3-4

# Chapter 1

## Overview

### 1-1 Overview

Congratulations on purchasing your add-on card from an acknowledged leader in the industry. Supermicro products are designed with the utmost attention to detail to provide you with the highest standards in quality and performance. For product support and updates, please refer to our website at <http://www.supermicro.com/products/info/networking.cfm#adapter>.

### 1-2 Key Features

The key features of this add-on card include the following:

- MicroLP form factor for Twin and MicroCloud Systems
- PCI Express 2.1 (2.5GT/s or 5GT/s)
- Two RJ-45 ports
- Intel® I/O Acceleration Technology (I/O AT) supported
- Support of VMDq, Next-Generation VMDq, and PC-SIG SR-IOV for Virtualized Environments
- Jumbo Frame Support of up to 9.5KB
- IEEE 802.3az – Energy Efficient Ethernet (EEE)
- Low Power Consumption (4W Typical)
- iSCSI Remote Boot support
- Flexible I/O Virtualization and Quality of Service (QoS)
- PXE Boot Support
- RoHS compliant 6/6

### 1-3 Specifications

#### General

- Intel® i350 GbE controller
- Compact size microLP form factor



- PCI-E 2.1 x4 (2.5GT/s or 5GT/s) interface
- Dual RJ-45 connectors
- Intel® PROSet Utility for Windows® Device Manager
- Intel® I/O Acceleration Technology (I/O AT)
- Power consumption: about 4W

### **Ethernet Features**

- IEEE 802.3 auto-negotiation for speed, duplex, and flow control
- IEEE 802.3x and 802.3z compliant flow control support
- Automatic cross-over detection function (MDI/MDI-X)
- 1Gb/s Ethernet IEEE 802.3, 802.3u, 802.3ab PHY specifications compliant
- IEEE 1588 protocol and 802.1AS implementation

### **Power Management and Efficiency**

- IEEE 802.3az – Energy Efficient Ethernet (EEE) which reduces power consumption of the PHY by about 50%
- DMA Coalescing reduces platform power consumption
- Active State Power Management (ASPM) support
- LAN disable function
- MAC Power Management controls
- Low Power Link Up – Link Speed Control

### **Virtualization Features**

- VM to VM Packet forwarding (Packet Loopback)
- Eight TX and RX queue pairs per port to support VMWare NetQueue and Microsoft VMQ

- Flexible Port Partitioning: 32 Virtual Functions
- PC-SIG SR-IOV implementation
- IEEE 802.1q VLAN support
- IEEE 802.1q advanced packet filtering

### **Performance Features**

- TCP/UDP, IPv4, and IPv6 checksum offloads to improve CPU usage
- Low Latency Interrupts
- Tx TCP segmentation offload (IPv4, IPv6) increases throughput and lowers processor usage
- Receive Side Scaling (RSS) for Windows environment, Scalable I/O for Linux environments
- Jumbo Frames support up to 9.5K Bytes
- Intelligent interrupt generation

### **Remote Boot Options**

- Preboot eXecution Environment (PXE) support
- iSCSI remote boot for Windows, Linux, and VMware

### **OS Support**

- Windows® XP SP3, Vista SP2, 7 SP1 2003 SP2, 2008 SP2, 2008 R2S
- RedHat EL 5.5, 6.0; SuSe SLES 10 SP3, 11 SP1
- FreeBSD 8.0
- VMware ESX 4.0, 4.1, 5.0
- Xen

## Cables Support

- RJ-45 Category-5/5e up to 100m

## Operating Conditions

- Operating temperature: 0°C to 55°C (32°F to 131°F)
- Storage temperature: -40°C to 70°C (-40°F to 158°F)

## Physical Dimensions

- Card PCB dimensions: 11.3cm (4.45in) x 3.9cm (1.54in) (L x H)

## Compliance/Environmental

- RoHS Compliant 6/6, Pb Free RoHS compliant



## Supported Platforms

- Twin and MicroCloud Systems with MicroLP Slot (see table below)

		MicroLP Add-On Card			
Type	System	AOC-CG-i2	AOC-CGP-i2	AOC-CIBF-m1	AOC-CTG-i1S
Microcloud	5037MC-H8TRF	√ (1)			
	5037MR-H8TRF		√ (1)		
2U Twin <sup>2+</sup>	2027TR-H70RF+		√ (1)	√ (1)	√ (1)
	2027TR-H71RF+		√ (1)	√ (1)	√ (1)
	2027TR-HTRF+		√ (1)	√ (1)	√ (1)
	6027TR-H70RF+		√ (1)	√ (1)	√ (1)
	6027TR-H71RF+		√ (1)	√ (1)	√ (1)
	6027TR-HTRF+		√ (1)	√ (1)	√ (1)
2U Twin+	6027TR-D70RF+		√ (2)	√ (2)	√ (2)
	6027TR-D71RF+		√ (2)	√ (2)	√ (2)
	6027TR-DTRF+		√ (2)	√ (2)	√ (2)
	2027TR-D70RF+		√ (2)	√ (2)	√ (2)
Fat Twin (8 Nodes)	F617R2-R72+		√ (1)	√ (1)	√ (1)
	F617R2-RT+		√ (1)	√ (1)	√ (1)
Fat Twin (4 Nodes)	F627R3-R72B+		√ (2)	√ (2)	√ (2)
	F627R3-RTB+		√ (2)	√ (2)	√ (2)



**Notes:** (1) = 1U Bracket. (2) = 2U Bracket.

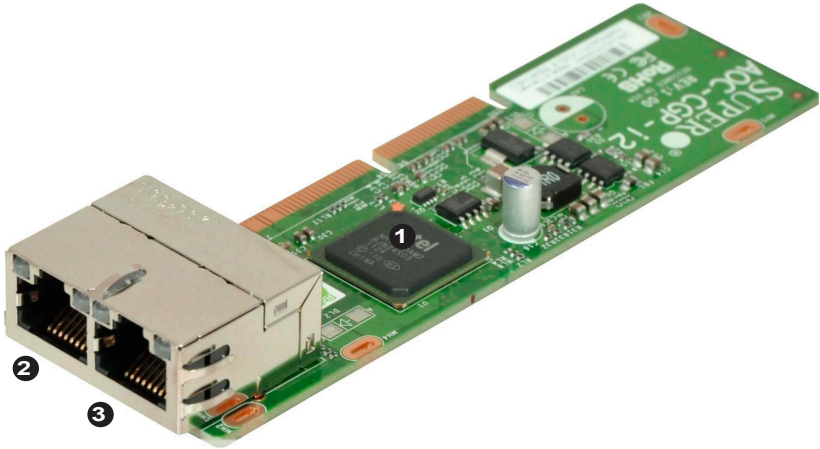
This product is only available as an integrated solution with Supermicro server systems. For the most current product information, visit: [www.supermicro.com](http://www.supermicro.com).

## Chapter 2

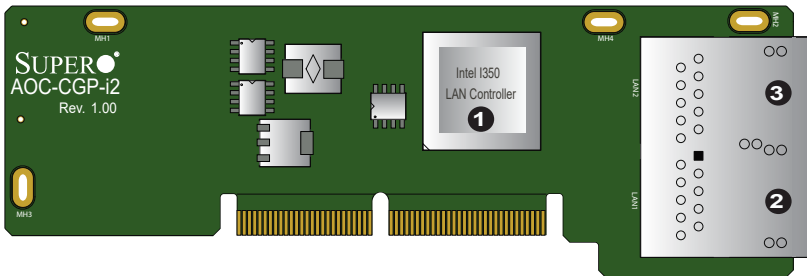
### Hardware Components

#### 2-1 Add-On Card Image and Layout

The AOC-CGP-i2 Image



The AOC-CGP-i2 Layout



#### 2-2 Major Components

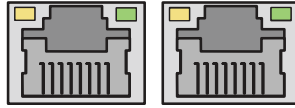
The following major components are installed on the AOC-CGP-i2:

1. Intel I350 LAN Controller
2. (RJ45) LAN Port 1 & LED
3. (RJ45) LAN Port 2 & LED

## 2-3 Connectors: LAN Ports and LAN LED Indicators

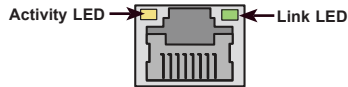
### Ethernet Ports

Two Ethernet ports (LAN1/LAN2) are located on the add-on card. Plug the RJ45 type cables into LAN Port1~LAN Port2 to provide Ethernet connections. Refer to the add-on card layout on Page 2-1 for the locations of the LAN ports.



### GLAN Port LEDs

Two LAN ports (LAN 1~LAN 2) are located on the add-on card. Each Ethernet LAN port has two LEDs. The blinking yellow LED on the left indicates activity. The LED on the right may be a solid green, orange or off to indicate the speed of the connection. See the table at right for more information.



GLAN Port LEDs		
LED	Color	Definition
Activity	Yellow (Blinking)	Port activity
	Green	100Mb/s Link Speed
Link	Orange	1Gb/s Link Speed
	Off	10Mb/s Link Speed or No Connection

## Chapter 3

### Installation

#### 3-1 Static-Sensitive Devices

Electrostatic Discharge (ESD) can damage electronic components. To avoid damaging your add-on card, it is important to handle it very carefully. The following measures are generally sufficient to protect your equipment from ESD.

##### Precautions

- Use a grounded wrist strap designed to prevent static discharge.
- Touch a grounded metal object before removing the add-on card from the antistatic bag.
- Handle the add-on card by its edges only; do not touch its components, or peripheral chips.
- Put the add-on card back into the antistatic bags when not in use.
- For grounding purposes, make sure that your system chassis provides excellent conductivity between the power supply, the case, the mounting fasteners, and the add-on card.

##### Unpacking

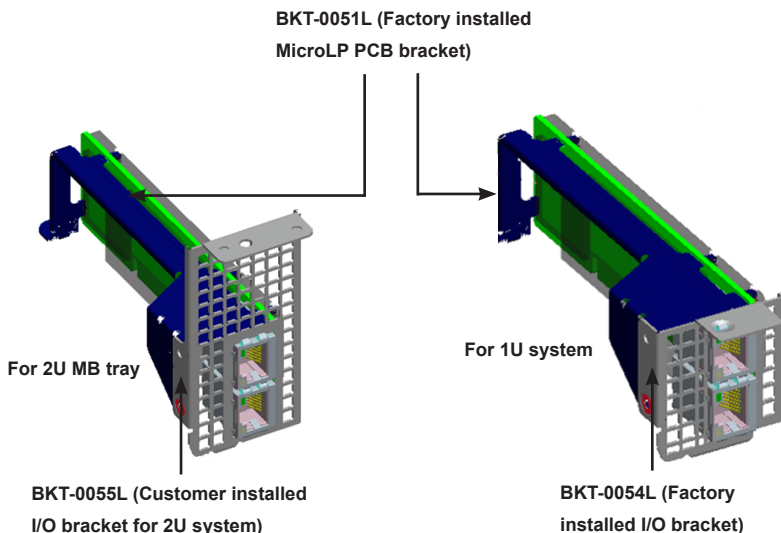
The add-on card is shipped in antistatic packaging to avoid static damage. When unpacking your component or your system, make sure that the person handling it is static protected.



**Warning:** To avoid damaging your components and to ensure proper installation, be sure to always connect the power cord last, and always remove it before adding, removing or changing any hardware components.

## 3-2 Add-On Card Brackets

The add-on card ships with a PCB bracket that is pre-installed at the factory. For 1U systems, an I/O bracket is also pre-installed on the card. For 2U systems, the I/O bracket is bundled with the card and must be installed by the customer. See the drawings below for bracket details.



## 3-3 Before Installation

To install the add-on card properly, be sure to follow the instructions below.

1. Power down the system.
2. Remove the power cord from the wall socket.
3. Use industry standard anti-static equipment (such as gloves or wrist strap) and follow the instructions listed on Page 3-1 to avoid damage caused by ESD.
4. Familiarize yourself with the server, motherboard, and/or chassis documentation.
5. Confirm that your operating system includes the latest updates and hotfixes.

### 3-4 Installing the Add-on Card

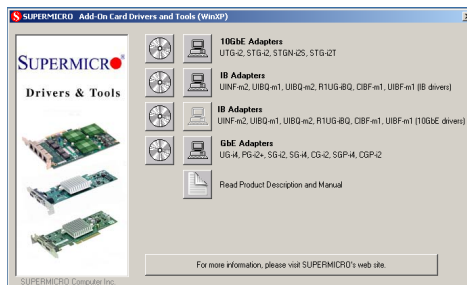
Follow the steps below to install the add-on card into your system.

1. Remove the server cover and, if necessary, set aside any screws for later use.
2. Remove the add-on card slot cover. If the case requires a screw, place the screw aside for later use.
3. Position the add-on card in the slot directly over the connector, and gently push down on both sides of the card until it slides into the PCI connector.
4. Secure the add-on card to the chassis. If required, use the screw that you previously removed.
5. Attach any necessary external cables to the add-on card.
6. Replace the chassis cover.
7. Plug the power cord into the wall socket, and power up the system.

### 3-5 Installing the Windows Operating System

Follow the steps below to install the drivers needed for your Windows OS support. The controller comes with a driver on the CD-ROM CDR-NIC.

1. Run the CDR-NIC. (If you do not have a product CD-ROM, download drivers from the Supermicro Support Website and then transfer them to your system.)
2. When the SUPERMICRO window appears, click on the computer icon next to the product model.



**Note:** If the *FOUND NEW HARDWARE WIZARD* screen displays on your system, click CANCEL.



3. Click on INSTALL DRIVERS AND SOFTWARE.
4. Follow the prompts to complete the installation.

## 3-6 Installing the Linux Operating System

Follow the steps below to install the driver to a Linux system.

### Build a Binary RPM Package

1. Run 'rpmbuild -tb <filename.tar.gz>'
2. Replace <filename.tar.gz> with the specific filename of the driver.



**Note:** For the build to work properly, the current running kernel MUST match the version and configuration of the installed kernel sources. If you have just recompiled the kernel, reboot the system at this time.

## 3-7 Building the Driver Manually

Follow the instructions below to build the driver manually.

1. Move the base driver tar file to the directory of your choice. For example:

```
/home/username/igb
```

or

```
/usr/local/src/igb
```

2. Untar/unzip archive, where <x.x.x> is the version number for the driver tar file:

```
tar xzf igb-<x.x.x>.tar.gz
```

3. Change to the driver src directory, where <x.x.x> is the version number for the driver tar:

```
cd igb-<x.x.x>/src/
```

4. Compile the driver module:

```
# make install
```

The binary will be installed as:

```
/lib/modules/<KERNEL_VERSION>/kernel/drivers/net/igb/igb.  
[k]o
```

The install location listed above is the default location. This location might not be correct for certain Linux distributions.

5. Load the module using either the `insmod` or `modprobe` command:

```
modprobe igb  
insmod igb
```

For 2.6 kernels, the `insmod` command can be used if the full path to the driver module is specified. For example:

```
insmod /lib/modules/<KERNEL VERSION>/kernel/drivers/  
net/igb/igb.ko
```

In addition, when using 2.6-based kernels, make sure that older `igb` drivers are removed from the kernel before loading the new module. To do this, use:

```
rmmmod igb; modprobe igb
```

6. Assign an IP address to the interface by entering the following, where `x` is the interface number:

```
ifconfig eth<x> <IP_address>
```

7. Verify that the interface works. Enter the following, where `<IP_address>` is the IP address for another machine on the same subnet as the interface that is being tested:

```
ping <IP_address>
```

## Notes

(Disclaimer Continued)

The products sold by Supermicro are not intended for and will not be used in life support systems, medical equipment, nuclear facilities or systems, aircraft, aircraft devices, aircraft/emergency communication devices or other critical systems whose failure to perform be reasonably expected to result in significant injury or loss of life or catastrophic property damage. Accordingly, Supermicro disclaims any and all liability, and should buyer use or sell such products for use in such ultra-hazardous applications, it does so entirely at its own risk. Furthermore, buyer agrees to fully indemnify, defend and hold Supermicro harmless for and against any and all claims, demands, actions, litigation, and proceedings of any kind arising out of or related to such ultra-hazardous use or sale.