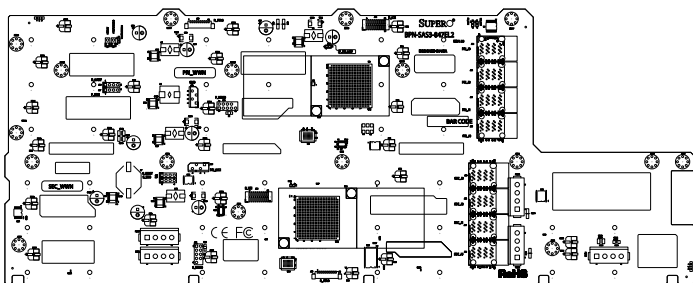


SUPERO®

BPN-SAS3-847EL Backplane



USER'S GUIDE

Revision 1.0

The information in this User's Manual has been carefully reviewed and is believed to be accurate. The vendor assumes no responsibility for any inaccuracies that may be contained in this document, makes no commitment to update or to keep current the information in this manual, or to notify any person or organization of the updates. **Please Note: For the most up-to-date version of this manual, please see our web site at www.supermicro.com.**

Super Micro Computer, Inc. ("Supermicro") reserves the right to make changes to the product described in this manual at any time and without notice. This product, including software and documentation, is the property of Supermicro and/or its licensors, and is supplied only under a license. Any use or reproduction of this product is not allowed, except as expressly permitted by the terms of said license.

IN NO EVENT WILL SUPERMICRO BE LIABLE FOR DIRECT, INDIRECT, SPECIAL, INCIDENTAL, SPECULATIVE OR CONSEQUENTIAL DAMAGES ARISING FROM THE USE OR INABILITY TO USE THIS PRODUCT OR DOCUMENTATION, EVEN IF ADVISED OF THE POSSIBILITY OF SUCH DAMAGES. IN PARTICULAR, SUPERMICRO SHALL NOT HAVE LIABILITY FOR ANY HARDWARE, SOFTWARE, OR DATA STORED OR USED WITH THE PRODUCT, INCLUDING THE COSTS OF REPAIRING, REPLACING, INTEGRATING, INSTALLING OR RECOVERING SUCH HARDWARE, SOFTWARE, OR DATA.

Any disputes arising between manufacturer and customer shall be governed by the laws of Santa Clara County in the State of California, USA. The State of California, County of Santa Clara shall be the exclusive venue for the resolution of any such disputes. Super Micro's total liability for all claims will not exceed the price paid for the hardware product.

California Best Management Practices Regulations for Perchlorate Materials: This Perchlorate warning applies only to products containing CR (Manganese Dioxide) Lithium coin cells. "Perchlorate Material-special handling may apply. See www.dtsc.ca.gov/hazardouswaste/perchlorate"

WARNING: Handling of lead solder materials used in this product may expose you to lead, a chemical known to the State of California to cause birth defects and other reproductive harm.

Manual Revision 1.0
Release Date: January 8, 2015

Unless you request and receive written permission from Super Micro Computer, Inc., you may not copy any part of this document.

Information in this document is subject to change without notice. Other products and companies referred to herein are trademarks or registered trademarks of their respective companies or mark holders.

Copyright © 2015 by Super Micro Computer, Inc.
All rights reserved.

Printed in the United States of America

Table of Contents

Contacting Supermicro.....	iv
Returning Merchandise for Service.....	v
Chapter 1 Safety Guidelines	1-1
1-1 ESD Safety Guidelines	1-1
1-2 General Safety Guidelines	1-1
1-3 An Important Note to Users	1-2
1-4 Introduction to the BPN-SAS3-847EL Backplane.....	1-2
1-5 Overview of the BPN-SAS3-847EL1/EL2 Backplanes	1-2
Chapter 2 Connectors, Jumpers and LEDs.....	2-1
2-1 Front Connectors	2-1
2-2 Front Connector and Pin Definitions.....	2-2
2-3 Front Jumper Location and Settings.....	2-3
Explanation of Jumpers	2-3
2-4 Front LED Indicators.....	2-4
2-5 Rear Connectors and LED Indicators	2-5
Chapter 3 Dual Port and Cascading Configurations.....	3-1
3-1 Single and Dual Port Expanders.....	3-1
Single Ports.....	3-1
Dual Ports	3-1
3-2 Failover	3-2
Single Host Bus Adapter	3-2
Single Host Bus Adapter Failover.....	3-2
3-3 Failover with RAID Cards and Multiple HBAs	3-3
Dual Host Bus Adapter	3-3
Dual Host Bus Adapter Failover.....	3-3
3-4 Connecting HBAs to the Backplane.....	3-4
Connecting an Internal HBA to the Backplane	3-4
Supported Internal HBA Cables.....	3-4
Connecting an External HBA to the Backplane	3-6
Single External Host Bus Adapter	3-6
Dual External Host Bus Adapter	3-6
Connecting Multiple Backplanes in a Single Channel Environment.....	3-7
Single HBA Configuration Cables.....	3-8
Connecting Multiple Backplanes in a Dual Channel Environment	3-9

Contacting Supermicro

Headquarters

Address: Super Micro Computer, Inc.
980 Rock Ave.
San Jose, CA 95131 U.S.A.

Tel: +1 (408) 503-8000

Fax: +1 (408) 503-8008

Email: marketing@supermicro.com (General Information)
support@supermicro.com (Technical Support)

Website: www.supermicro.com

Europe

Address: Super Micro Computer B.V.
Het Sterrenbeeld 28, 5215 ML
's-Hertogenbosch, The Netherlands

Tel: +31 (0) 73-6400390

Fax: +31 (0) 73-6416525

Email: sales@supermicro.nl (General Information)
support@supermicro.nl (Technical Support)
rma@supermicro.nl (Customer Support)

Website: www.supermicro.nl

Asia-Pacific

Address: Super Micro Computer, Inc.
3F, No. 150, Jian 1st Rd.
Zhonghe Dist., New Taipei City 235
Taiwan (R.O.C)

Tel: +886-(2) 8226-3990

Fax: +886-(2) 8226-3992

Email: support@supermicro.com.tw

Website: www.supermicro.com.tw

Returning Merchandise for Service

A receipt or copy of your invoice marked with the date of purchase is required before any warranty service will be rendered. You can obtain service by calling your vendor for a Returned Merchandise Authorization (RMA) number. When returning to the manufacturer, the RMA number should be prominently displayed on the outside of the shipping carton, and mailed prepaid or hand-carried. Shipping and handling charges will be applied for all orders that must be mailed when service is complete.

For faster service, RMA authorizations may be requested online (<http://www.supermicro.com/support/rma/>).

Whenever possible, repack the backplane in the original Supermicro box, using the original packaging materials. If these are no longer available, be sure to pack the backplane in an anti-static bag and inside the box. Make sure that there is enough packaging material surrounding the backplane so that it does not become damaged during shipping.

This warranty only covers normal consumer use and does not cover damages incurred in shipping or from failure due to the alteration, misuse, abuse or improper maintenance of products.

During the warranty period, contact your distributor first for any product problems.

Notes

Chapter 1

Safety Guidelines

To avoid personal injury and property damage, carefully follow all the safety steps listed below when accessing your system or handling the components.

1-1 ESD Safety Guidelines

Electrostatic Discharge (ESD) can damage electronic components. To prevent damage to your system, it is important to handle it very carefully. The following measures are generally sufficient to protect your equipment from ESD.

- Use a grounded wrist strap designed to prevent static discharge.
- Touch a grounded metal object before removing a component from the antistatic bag.
- Handle the backplane by its edges only; do not touch its components, peripheral chips, memory modules or gold contacts.
- When handling chips or modules, avoid touching their pins.
- Put the card and peripherals back into their antistatic bags when not in use.

1-2 General Safety Guidelines

- Always disconnect power cables before installing or removing any components from the computer, including the BPN-SAS3-847EL series backplane.
- Make sure that the backplane is properly and securely on the motherboard to prevent damage to the system due to power outages.

1-3 An Important Note to Users

All images and layouts shown in this user's guide are based upon the latest backplane revision available at the time of publishing. The card you have received may or may not look exactly the same as the graphics shown in this manual.

1-4 Introduction to the BPN-SAS3-847EL Backplane

The BPN-SAS3-847EL backplane has been designed to utilize the most up-to-date technology available, providing your system with reliable, high-quality performance.

This manual reflects BPN-SAS3-847EL Revision 1.00, the most current release available at the time of publication. Always refer to the Supermicro Web site at www.supermicro.com for the latest updates, compatible parts and supported configurations.

1-5 Overview of the BPN-SAS3-847EL1/EL2 Backplanes

The BPN-SAS3-847EL1 and BPN-SAS3-847EL2 model backplanes are identical, except that the BPN-SAS3-847EL2 backplane has duplicate secondary components which are not found on the BPN-SAS3-847EL1. The BPN-SAS3-847EL2 is divided into a two sections, with the primary components on the upper portion of the board and the secondary components on the lower portion. SAS3 backplanes are not compatible with legacy SAS (3 Gbps), SATA (1.5 Gbps) backplanes or lower.

Chapter 2

Connectors, Jumpers and LEDs

2-1 Front Connectors

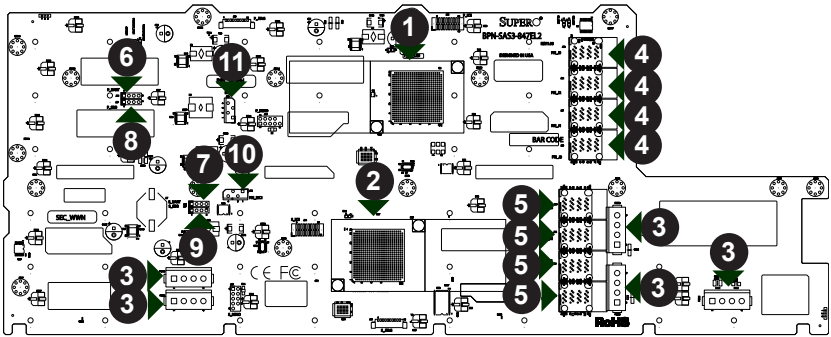


Figure 2-1: BPN-SAS3-847EL1/EL2 Connectors and Components

1. Primary Expander Chip.
2. Secondary Expander Chip (not present on EL1 single port back-planes).
3. Backplane Power Connectors: PWR1 through PWR5.
4. Primary SAS Ports: PRI_J0 (J20), PRI_J1 (J21), PRI_J2 (J22) and PRI_J3 (J23)
5. Secondary SAS Ports: SEC_J0 (J30), SEC_J1 (J31), SEC_J2 (J32), SEC_J3 (J33) (not present on EL1 single port backplanes).
6. Primary UART Connector: P_UART (J26) for manufacturer's use only.
7. Secondary UART Connector: S_UART(J36) for manufacturer's use, not present on EL1 back-planes.
8. Primary SDB Connector: P_SDB (J27), for manufacturer's use.
9. Secondary SDB Connector: S_SDB (J37), for manufacturer's use only, not present on EL1 backplanes.
10. I²C Connector: PRI_I2C1 (J29).
11. SMB Connector: SMB (J28).

2-2 Front Connector and Pin Definitions

1. -2. Primary and Secondary Expander Chips

The primary and secondary expander chips allow the backplane to support dual port, cascading, and failover configurations.

3. Backplane Power Connectors

The 4-pin connectors, designated PWR1 - PWR5 provide power to the backplane. See the table on the right for pin definitions.

Backplane Main Power 4-Pin Connector	
Pin#	Definition
1	+12V
2 and 3	Ground
4	+5V

4. - 5. Primary and Secondary SAS Ports

The primary SAS connectors are designated PRI_J0 (J20), PRI_J1 (J21), PRI_J2 (J22) and PRI_J3 (J23). The secondary SAS Ports are designated SEC_J0 (J30), SEC_J1 (J31), SEC_J2 (J32) and SEC-J3 (J33) and are not present on EL1 single port backplanes.

6. - 7. Primary and Secondary UART Connectors

The primary UART connector is designated P_UART (J26). The secondary UART connector is designated S_UART(J36) and is not present on BPN-SAS3-847EL1. UART connectors are used for manufacturer's diagnostic purposes only.

8. - 9. SDB Connectors

The Primary SDB connector is designated P_SDB (J27). The secondary SDB connector is designated S_SDB (J37). (Not present on BPN-SAS3-847EL1 backplanes) These are debug connectors used for the manufacturer's diagnostic purposes only.

10. I²C Connector

The I2C connector. is designated PRI_I2C1 (J29).

11. SMB Connector

The SMB connector. is designated SMB (J28).

2-3 Front Jumper Location and Settings

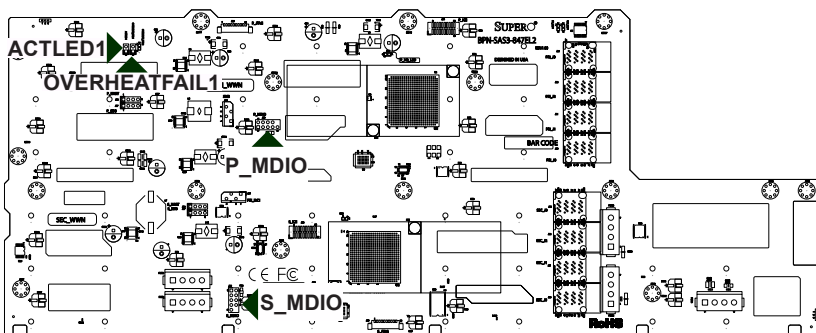
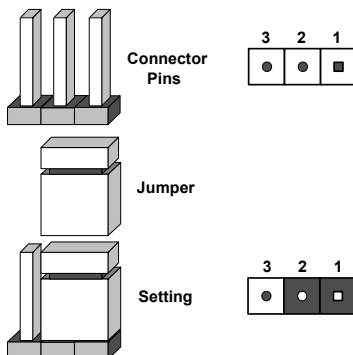


Figure 2-2: Front Jumpers

Explanation of Jumpers

To modify the operation of the backplane, jumpers can be used to choose between optional settings. Jumpers create shorts between two pins to change the function of the connector. Pin 1 is identified with a square solder pad on the printed circuit board. Note: On two pin jumpers, "Closed" means the jumper is on and "Open" means the jumper is off the pins.



General Jumper Settings		
Jumper	Jumper Settings	Note
ACTLED1	Open: Disabled (Default) Closed: Enabled	Activity LED test.
OVERHEATFAIL1	N/A	Indicates an overheated condition (connect to external LED)
P_MDIO	Open: Disabled (Default) Closed: Enabled	Primary management data in/out (J38). For manufacturer's use only
S-MDIO	Open: Disabled (Default) Closed: Enabled	Secondary management data in/out. (J39). For manufacturer's use only

2-4 Front LED Indicators

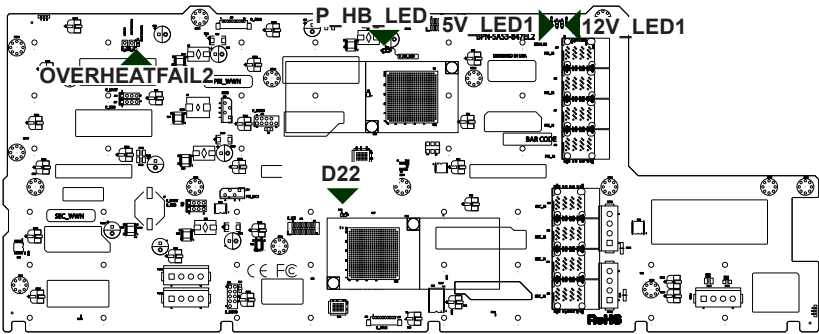


Figure 2-3: Front LEDs

Backplane LEDs			
LED	Normal State	Abnormal State	Specification
12V_LED1	On	Off	12V power status
P_HB_LED (D21)	Blinking	Steady on/off	Primary expander heartbeat indicator
D22	Blinking	Steady on/off	Secondary expander heartbeat indicator
5V_LED1	On	Off	5V power status
OVERHEATFAIL2	Off	On	System overheat/failure LED

2-5 Rear Connectors and LED Indicators

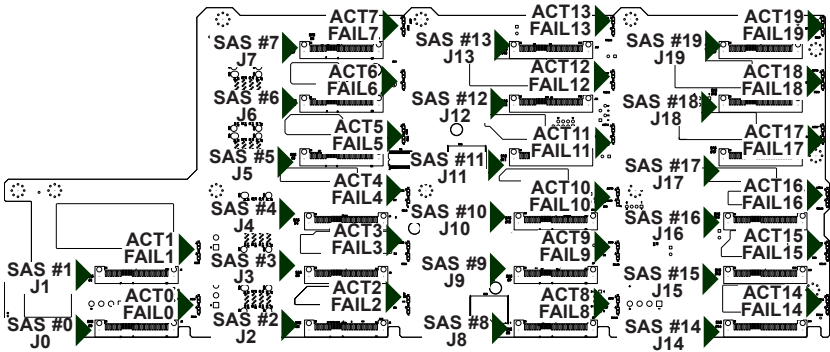


Figure 2-4: Rear Connectors and LEDs

Rear SAS Connectors			
Rear Connector	SAS Drive Number	Rear Connector	SAS Drive Number
SAS #0	SAS HDD #0	SAS #10	SAS HDD #10
SAS #1	SAS HDD #1	SAS #11	SAS HDD #11
SAS #2	SAS HDD #2	SAS #12	SAS HDD #12
SAS #3	SAS HDD #3	SAS #13	SAS HDD #13
SAS #4	SAS HDD #4	SAS #14	SAS HDD #14
SAS #5	SAS HDD #5	SAS #15	SAS HDD #15
SAS #6	SAS HDD #6	SAS #16	SAS HDD #16
SAS #7	SAS HDD #7	SAS #17	SAS HDD #17
SAS #8	SAS HDD #8	SAS #18	SAS HDD #18
SAS #9	SAS HDD #9	SAS #19	SAS HDD #19

Rear LED Indicators		
Rear LED	Hard Drive Activity	Failure LED
SAS #0	ACT0	FAIL0
SAS #1	ACT1	FAIL1
SAS #2	ACT 2	FAIL2
SAS #3	ACT3	FAIL3
SAS #4	ACT4	FAIL4
SAS #5	ACT5	FAIL5
SAS #6	ACT6	FAIL6
SAS #7	ACT7	FAIL7
SAS #8	ACT8	FAIL8
SAS #9	ACT 9	FAIL9
SAS #10	ACT10	FAIL10
SAS #11	ACT11	FAIL11
SAS #12	ACT12	FAIL12
SAS #13	ACT13	FAIL13
SAS #14	ACT14	FAIL14
SAS #15	ACT15	FAIL15
SAS #16	ACT16	FAIL16
SAS #17	ACT17	FAIL17
SAS #18	ACT18	FAIL18
SAS #19	ACT19	FAIL19

Notes

Chapter 3

Dual Port and Cascading Configurations

3-1 Single and Dual Port Expanders

SAS connectors PRI-J0 to J3 and SEC-J0 to J3 are bidirectional and can be treated as input or output.

Single Ports

BPN-SAS3-847EL1 backplanes have a single port expander that accesses all of the drives and supports cascading.

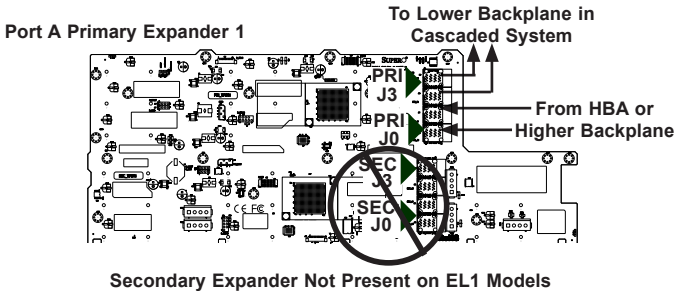


Figure 3-1: BPN-SAS3-847EL1 Single Port Configuration

Dual Ports

BPN-SAS3-847EL2 model backplanes have dual-port expanders that access all of the hard drives. These dual-port expanders support cascading, failover, and recovery.

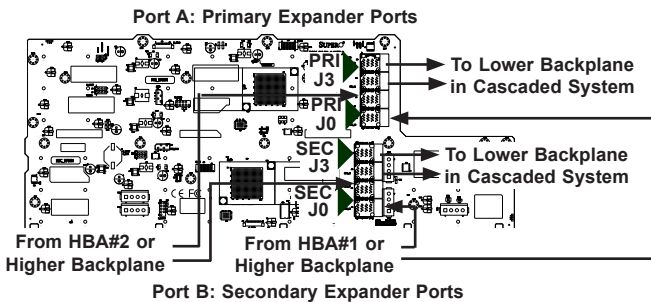


Figure 3-2: BPN-SAS3-847EL2 Dual Port Configuration

3-2 Failover

The BPN-SAS3-847EL2 model backplane has two expanders which enable effective failover and recovery.

Single Host Bus Adapter

In a single host bus configuration, the backplane connects to one host bus adapter.

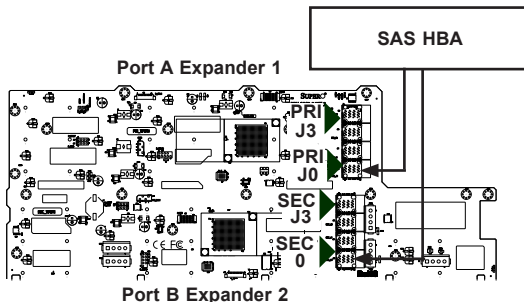


Figure 3-3: Single HBA

Single Host Bus Adapter Failover

If the expander or data path in Port A fails, the system automatically switches to Port B with application software or failover support.

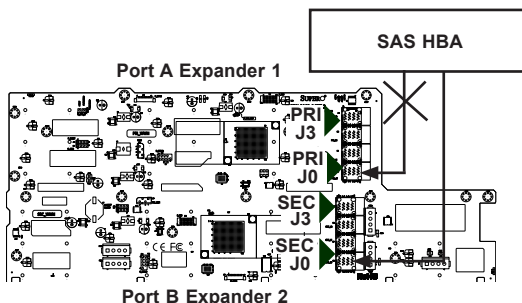


Figure 3-4: Single HBA Failover

3-3 Failover with RAID Cards and Multiple HBAs

The BPN-SAS3-847EL backplane may be configured for failover with multiple HBAs using either RAID controllers or HBAs to achieve failover protection.

RAID Controllers: If RAID controllers are used, then the failover is accomplished through port failover on the same RAID card.

HBAs: If multiple HBAs are used to achieve failover protection and load balancing, **Linux MPIO software must be installed and correctly configured to perform the load balancing and failover tasks.**

Dual Host Bus Adapter

In a dual host bus configuration, the backplane connects to two HBA's.

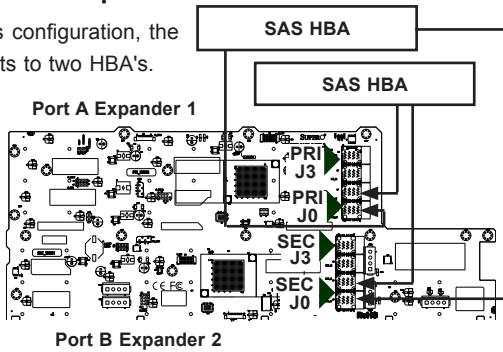


Figure 3-5: Dual HBA

Dual Host Bus Adapter Failover

If the expander or data path in Port A fails, the system automatically switches to Port B. This maintains a full connection to all drives.

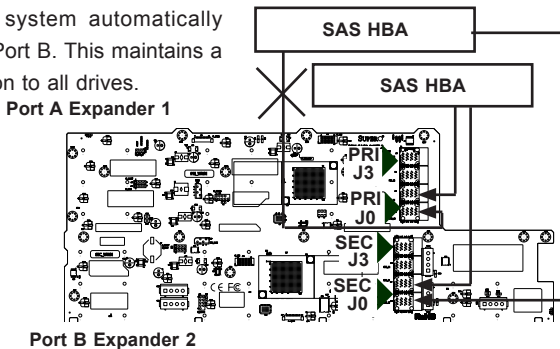


Figure 3-6: Dual HBA Failover

IMPORTANT: For RAID controllers, redundancy is achieved through port failover. For multiple HBAs, MPIO software is required to achieve failover protection.

3-4 Connecting HBAs to the Backplane

Connecting an Internal HBA to the Backplane

The following section lists the most common cables used to connect the HBA to the backplane.

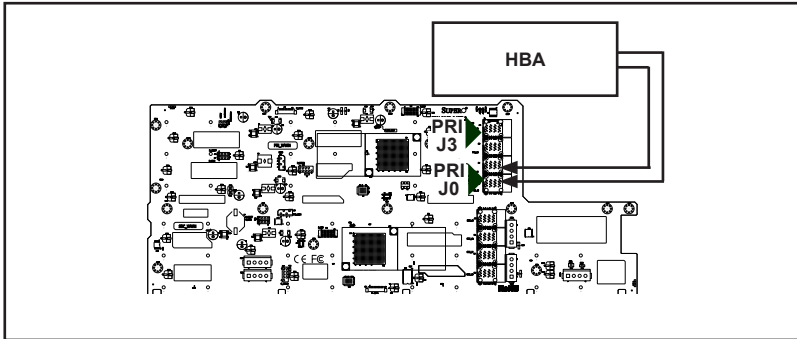


Figure 3-7: Single Internal Host Bus Adapter

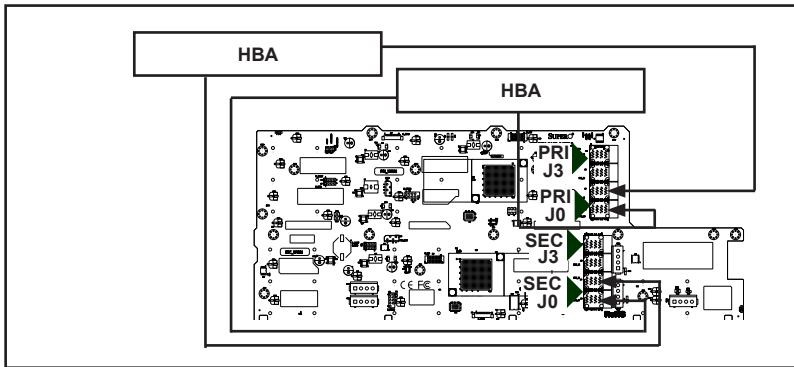


Figure 3-8: Dual Internal Host Bus Adapter

Supported Internal HBA Cables

Use the following cables to create connections between the internal HBA and BPN-SAS3-847EL model backplane. The cables required depend upon the HBA connector.

IMPORTANT: See Section 3-3 of this manual, *Failover with RAID Cards and Multiple HBAs* for important information on supported configurations.

Cable Name: Internal iPass (Mini-SAS) to HD (Mini-SAS)

Part #: CBL-SAST-0508-01 **Length:** 50 cm (19 inches)

Part #: CBL-SAST-0507-01 **Length:** 80 cm (31 inches)

Description: This cable has an iPass (SFF-8087/Mini-SAS) connector (36-pin) at one end and a Mini-SAS HD (SFF-8643) connector at the other end. It connects from the SAS2 HBA to the BPN-SAS3-847EL model backplane.

Cable name: Internal HD (Mini-SAS) to HD (Mini-SAS)

Part #: CBL-SAST-0568 **Length:** 35 cm (13 inches)

Part #: CBL-SAST-0593 **Length:** 60 cm (23 inches)

Part #: CBL-SAST-0531 **Length:** 80 cm (31 inches)

Description: This cable has a Mini-SAS HD (SFF-8643) connector at both ends. It connects from the SAS3 HBA to the BPN-SAS3-847EL model backplane.

Connecting an External HBA to the Backplane

This backplane supports external host bus adapters. In this configuration, the HBA and the backplane are in different physical chassis. This allows a JBOD (Just a Bunch Of Drives) configuration from an existing system.

Single External Host Bus Adapter

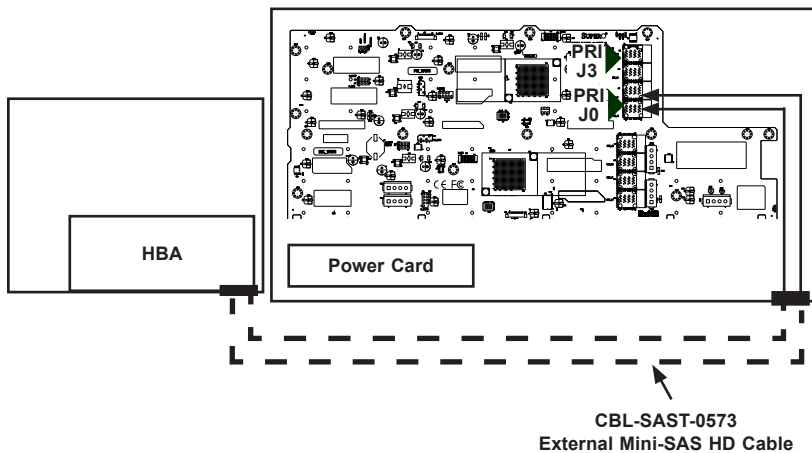


Figure 3-9: Single External Host Adapter

Dual External Host Bus Adapter

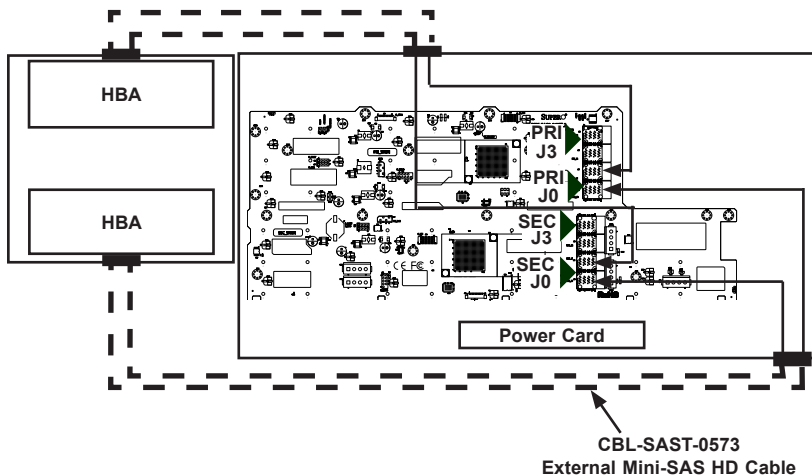


Figure 3-10: Dual External Host Bus Adapter

IMPORTANT: See Section 3-3 of this manual, *Failover with RAID Cards and Multiple HBAs* for important information on supported configurations.

Connecting Multiple Backplanes in a Single Channel Environment

This section describes the cables used when cascading from a single HBA. These connections use CBL-SAST-0531 internal cables and CBL-SAST-0573 external cables.

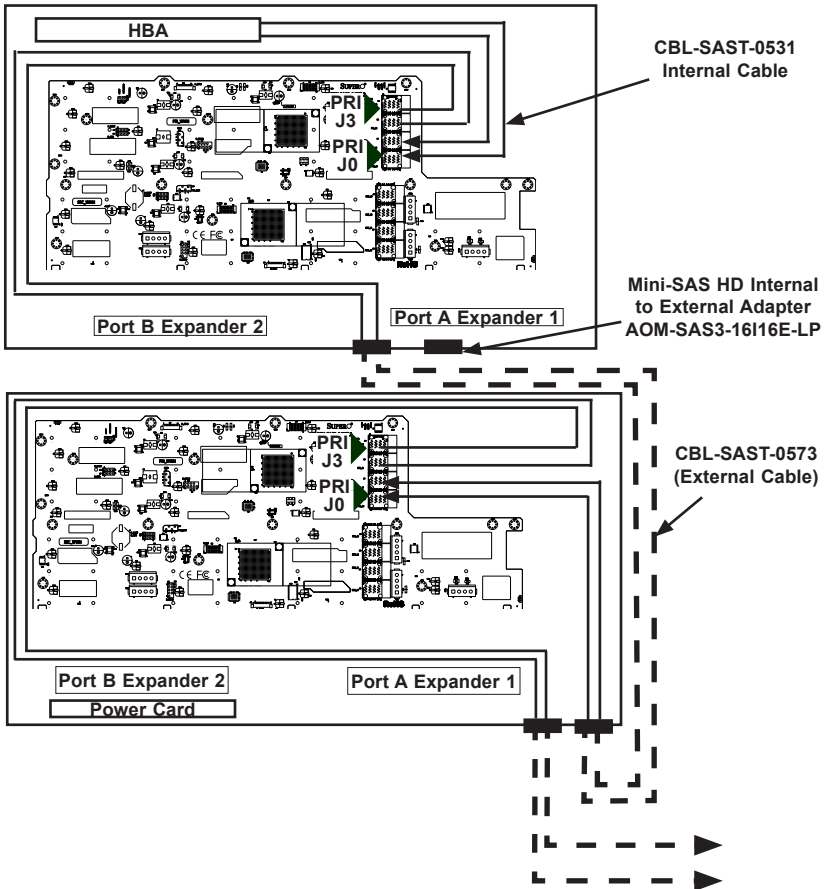


Figure 3-11: Single HBA Configuration

Single HBA Configuration Cables



Figure 3-12: External Mini-SAS HD to External Mini-SAS HD Cable

Cable Name: 1 Meter External Mini-SAS HD to External Mini-SAS HD Cable

Part #: CBL-SAST-0573

Ports: Single

Placement: External Cable

Description: External cascading cable, connects ports between servers and JBODs.

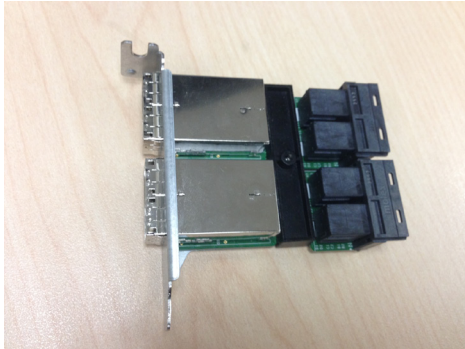


Figure 3-13: Mini-SAS HD Internal to External Adapter

Cable Name: 16-port Mini-SAS HD Internal to External Cable Adapter with LP Bracket

Part #: AOM-SAS3-16I16E-LP

Ports: Four wide-ports (sixteen ports total)

Placement: Internal cable with adapter

Description: Internal cable, connects the SAS3 backplane to external ports.

Connecting Multiple Backplanes in a Dual Channel Environment

This section describes the cables used when cascading from dual HBAs. These connections use CBL-SAST-0531 internal cables and CBL-SAST-0573 external cables.

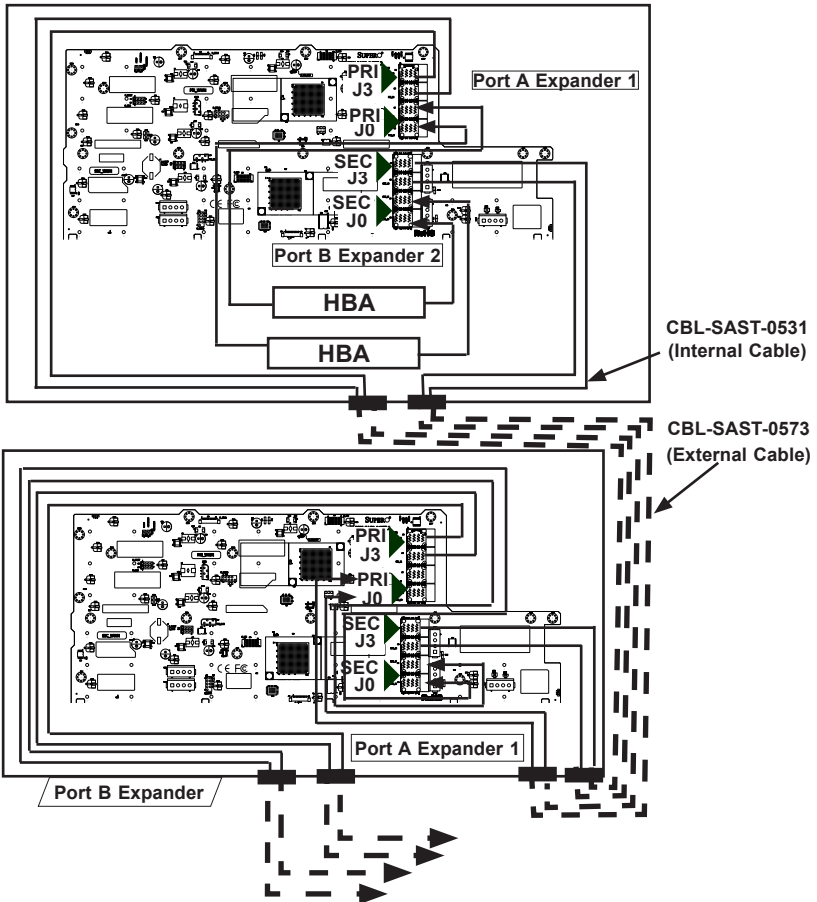


Figure 3-14: Dual HBA Configuration

IMPORTANT: See Section 3-3 of this manual, *Failover with RAID Cards and Multiple HBAs* for important information on supported configurations.

Disclaimer (cont.)

The products sold by Supermicro are not intended for and will not be used in life support systems, medical equipment, nuclear facilities or systems, aircraft, aircraft devices, aircraft/emergency communication devices or other critical systems whose failure to perform be reasonably expected to result in significant injury or loss of life or catastrophic property damage. Accordingly, Supermicro disclaims any and all liability, and should buyer use or sell such products for use in such ultra-hazardous applications, it does so entirely at its own risk. Furthermore, buyer agrees to fully indemnify, defend and hold Supermicro harmless for and against any and all claims, demands, actions, litigation, and proceedings of any kind arising out of or related to such ultra-hazardous use or sale.