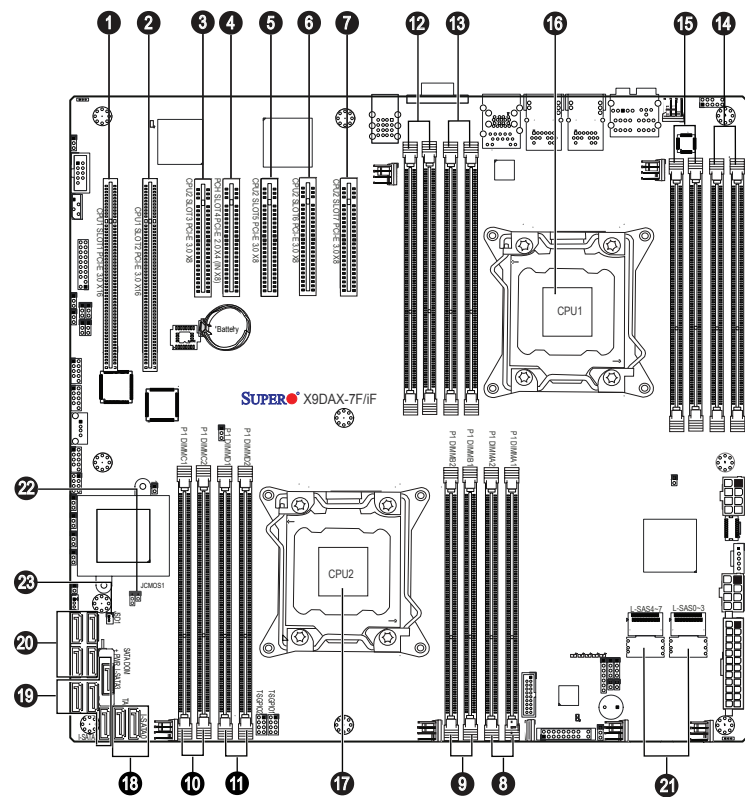


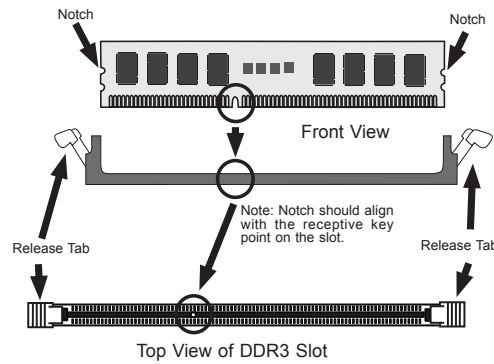
SUPERMICR SuperServer 6027AX-TRF/72RF Quick Reference Guide

Board Layout



No.	Description
1	CPU1 Slot1 PCI-E 3.0 x16
2	CPU1 Slot2 PCI-E 3.0 x16
3	CPU2 Slot3 PCI-E 3.0 x8
4	PCH CPU2 Slot4 PCI-E 3.0 x4 (in x8)
5	CPU2 Slot5 PCI-E 3.0 x8
6	CPU2 Slot6 PCI-E 3.0 x8
7	CPU2 Slot7 PCI-E 3.0 x8
8	DIMMA1(Blue)/DIMMA2 slot
9	DIMMB1 (Blue)/DIMMB2 slot
10	DIMMC1 (Blue)/DIMMC2 slot
11	DIMMD1 (Blue)/DIMMD2 slot
12	DIMME1 (Blue)/DIMME2 slot
13	DIMMF1 (Blue)/DIMM F2 slot
14	DIMMG1 (Blue)/DIMM G2 slot
15	DIMMH1 (Blue)/DIMM H2 slot
16	CPU1 (it must be installed on it first)
17	CPU2
18	(L-)SATA 3.0 Ports 0~1 (from Intel SB SATA connector)
19	(L-)SATA 2.0 Ports 2~5 (from Intel SB SATA connector)
20	(S-)SATA 2.0 Ports 0~3 from SCU (Storage Control Unit)
21	Serial Attached SCSI 2.0 Connectors 0~3, 4~7 from the LSI SAS 2208 Controller (6027AX-72RF only)
22	JCMOS1 = CMOS Reset
23	SATA DOM Power

MEMORY



Processors and their Corresponding Memory Modules								
CPU#	Corresponding DIMM Modules							
CPU 1	P1-DIMMA1	P1-DIMMB1	P1-DIMMC1	P1-DIMMD1	P1-DIMMA2	P1-DIMMB2	P1-DIMMC2	P1-DIMMD2
CPU 2	P2-DIMME1	P2-DIMMF1	P2-DIMMG1	P2-DIMMH1	P2-DIMME2	P2-DIMMF2	P2-DIMMG2	P2-DIMMH2

Processors and Memory Module Population for Optimal Performance	
Number of CPUs + DIMMs	CPU and Memory Population Configuration Table (For memory to work properly, follow the instructions below)
1 CPU & 2 DIMMs	CPU1 & P1-DIMMA1/P1-DIMMB1
1 CPU & 4 DIMMs	CPU1 & P1-DIMMA1/P1-DIMMB1, P1-DIMMC1/P1-DIMMD1
1 CPU & 5-8 DIMMs	CPU1 & P1-DIMMA1/P1-DIMMB1, P1-DIMMC1/P1-DIMMD1 + Any memory pairs in P1-DIMMA2/P1-DIMMB2/P1-DIMMC2/P1-DIMMD2 slot
2 CPUs & 4 DIMMs	CPU1 + CPU2 & P1-DIMMA1/P1-DIMMB1, P2-DIMME1/P2-DIMMF1
2 CPUs & 6 DIMMs	CPU1 + CPU2 & P1-DIMMA1/P1-DIMMB1/P1-DIMMC1/P1-DIMMD1, P2-DIMME1/P2-DIMMF1
2 CPUs & 8 DIMMs	CPU1 + CPU2 & P1-DIMMA1/P1-DIMMB1/P1-DIMMC1/P1-DIMMD1, P2-DIMME1/P2-DIMMF1/P2-DIMMG1/P2-DIMMH1
2 CPUs & 10-16 DIMMs	CPU1 + CPU2 & P1-DIMMA1/P1-DIMMB1/P1-DIMMC1/P1-DIMMD1, P2-DIMME1/P2-DIMMF1/P2-DIMMG1/P2-DIMMH1 + Any memory pairs in P1, P2 DIMM slots
2 CPUs & 16 DIMMs	CPU1 + CPU2 & P1-DIMMA1/P1-DIMMB1/P1-DIMMC1/P1-DIMMD1, P2-DIMME1/P2-DIMMF1/P2-DIMMG1/P2-DIMMH1, P1-DIMMA2/P1-DIMMB2/P1-DIMMC2/P1-DIMMD2, P2-DIMME2/P2-DIMMF2/P2-DIMMG2/P2-DIMMH2

Installing UDIMM (ECC/non-ECC) Memory

Intel E5-2600 Series Processor UDIMM Memory Support							
Ranks per DIMM & Data Width	Memory Capacity Per DIMM (See the Note below)	Speed (MT/s) and Voltage Validated by Slot per Channel (SPC) and DIMM Per Channel (DPC)					
		1 Slot Per Channel			2 Slots Per Channel		
		1DPC		1DPC		2DPC	
		1.35V	1.5V	1.35V	1.5V	1.35V	1.5V
SRx8 Non-ECC	1GB 2GB 4GB	NA	1066, 1333, 1600	NA	1066, 1333	NA	1066, 1333
DRx8 Non-ECC	2GB 4GB 8GB	NA	1066, 1333, 1600	NA	1066, 1333	NA	1066, 1333
SRx16 Non-ECC	512MB 1GB 2GB	NA	1066, 1333, 1600	NA	1066, 1333	NA	1066, 1333
SRx8 ECC	1GB 2GB 4GB	1066, 1333	1066, 1333, 1600	1066, 1333	1066, 1333	1066	1066, 1333
DRx8 ECC	2GB 4GB 8GB	1066, 1333	1066, 1333, 1600	1066, 1333	1066, 1333	1066	1066, 1333

Installing RDIMM (ECC) Memory

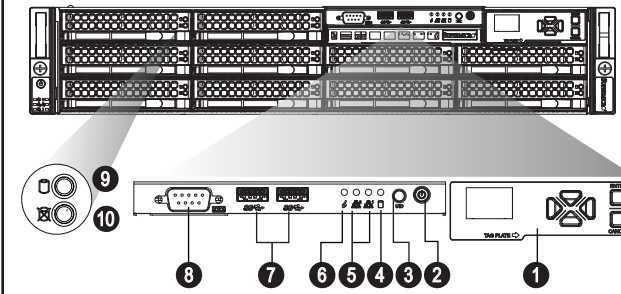
Intel E5-2600 Series Processor RDIMM Memory Support							
Ranks per DIMM & Data Width	Memory Capacity Per DIMM (See the Note below)	Speed (MT/s) and Voltage Validated by Slot per Channel (SPC) and DIMM Per Channel (DPC)					
		1 Slot Per Channel			2 Slots Per Channel		
		1DPC		1DPC		2DPC	
		1.35V	1.5V	1.35V	1.5V	1.35V	1.5V
SRx8	1GB 2GB 4GB	1066, 1333	1066, 1333, 1600	1066, 1333	1066, 1333, 1600	1066, 1333	1066, 1333, 1600
DRx8	2GB 4GB 8GB	1066, 1333	1066, 1333, 1600	1066, 1333	1066, 1333, 1600	1066, 1333	1066, 1333, 1600
SRx4	2GB 4GB 8GB	1066, 1333	1066, 1333, 1600	1066, 1333	1066, 1333, 1600	1066, 1333	1066, 1333, 1600
DRx4	4GB 8GB 16GB	1066, 1333	1066, 1333, 1600	1066, 1333	1066, 1333, 1600	1066, 1333	1066, 1333, 1600
QRx4	8GB 16GB 32GB	800	1066	800	1066	800	800
QRx8	4GB 8GB 16GB	800	1066	800	1066	800	800

Installing LRDIMM (ECC) Memory

Intel E5-2600 Series Processor LRDIMM Memory Support							
Ranks per DIMM & Data Width	Memory Capacity Per DIMM (See the Note below)	Speed (MT/s) and Voltage Validated by Slot per Channel (SPC) and DIMM Per Channel (DPC)					
		1 Slot Per Channel			2 Slots Per Channel		
		1DPC		1DPC		2DPC	
		1.35V	1.5V	1.35V	1.5V	1.35V	1.5V
QRx4 (DDP)	16GB 32GB	1066, 1333	1066, 1333	1066	1066, 1333	1066	1066, 1333
QRx8 (P)	8GB 16GB	1066, 1333	1066, 1333	1066	1066, 1333	1066	1066, 1333

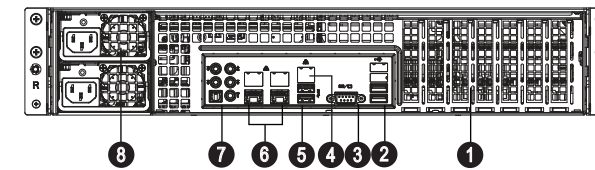
Note: For detailed information on memory support and updates, please refer to the SMC Recommended Memory List posted on our website at <http://www.supermicro.com/support/resources/mem.cfm>.

Front View & Interface



No.	Description
1	LCD Panel
2	Power Button
3	UID Button (Unit Identifier Button)
4	Device Activity LED
5	LAN1 LED & LAN2 LED
6	Information LED
7	USB 3.0 Ports
8	COM Port
9	Hard Drive Presence LED
10	Hard Drive Status LED

Rear View

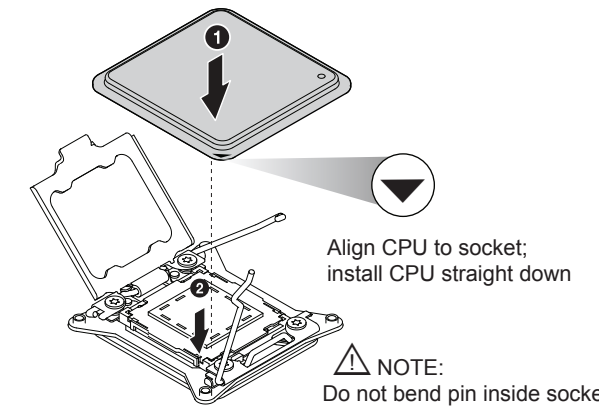


No.	Description
1	PCI Expansion Slot
2	USB 2.0 Ports 0/1/2/3
3	VGA Port
4	Dedicated LAN for IPMI
5	USB 3.0 Ports 0/1
6	LAN1/LAN2
7	7.1 HD Audio
8	Power Supply Module

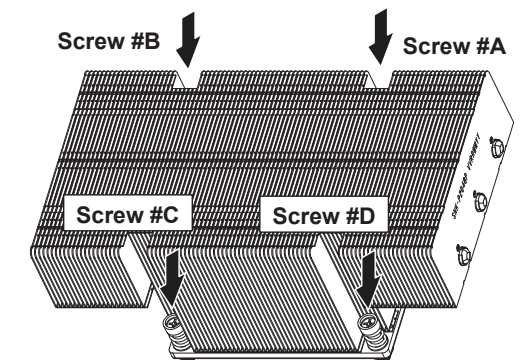
Beep Codes

BIOS Beep Codes		
Beep Code/LED	Message	Description
1 beep	Refresh	Circuits have been reset. (Ready to power up)
5 short beeps + 1 long beep	Memory	No memory detected
5 long beeps + 2 short beeps	Display memory read/write status	Video adapter missing or with faulty memory
1 continuous beep	System	System overheat

CPU Installation



Heatsink Installation



- Place heatsink on top of installed CPU
- Line up the four screws to socket
- Push down heatsink and screw down as shown (cross pattern, in order: A, C, B, D)
- NOTE:** Only use 6-8 lb/f of torque; otherwise, hand-tighten each screw, to avoid damaging the system

Caution

SAFETY INFORMATION
IMPORTANT: See installation instructions and safety warning before connecting system to power supply.
http://www.supermicro.com/about/policies/safety_information.cfm

WARNING:
 To reduce risk of electric shock/damage to equipment, disconnect power from server by disconnecting all power cords from electrical outlets.
 If any CPU socket empty, install protective plastic CPU cap

CAUTION:
 Always be sure all power supplies for this system have the same power output. If mixed power supplies are installed, the system will not operate.

For more information go to :
<http://www.supermicro.com/support>

