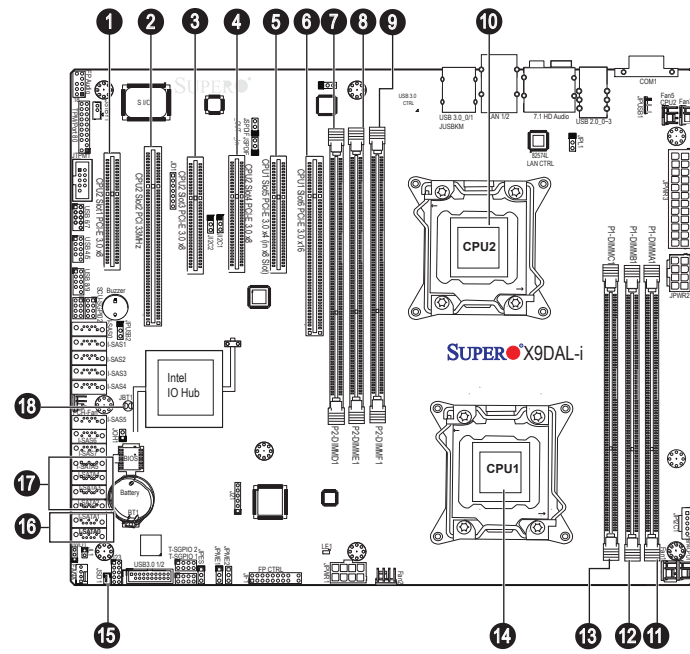


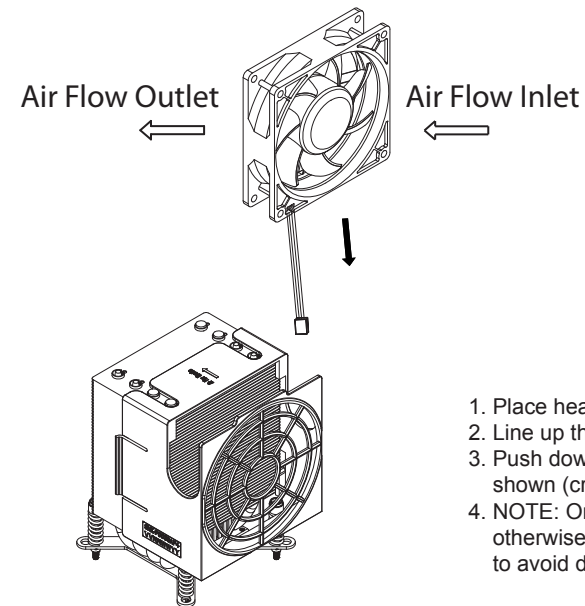
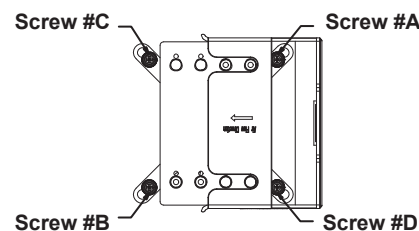
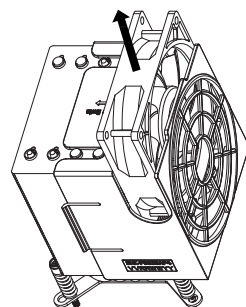
Board Layout



Note:
Install CPU1 first

No.	Description	No.	Description
1	CPU2 Slot1 PCI-E 3.0 x8	10	CPU2
2	CPU2 Slot2 PCI 33MHz	11	P1-DIMMA1
3	CPU2 Slot3 PCI-E 3.0 x8	12	P1-DIMMB1
4	CPU2 Slot4 PCI-E 3.0 x8	13	P1-DIMMC1
5	CPU1 Slot5 PCI-E 3.0 x4 (in x8 Slot)	14	CPU1
6	CPU1 Slot6 PCI-E 3.0 x16	15	JSD1 = SATA DOM Power Connector
7	P2-DIMMD1	16	SATA 0/1 = SATA 3
8	P2-DIMME1	17	SATA 2-5 = SATA 2
9	P2-DIMMF1	18	JBT1 = CMOS Reset

Heatsink Installation



- Place heatsink on top of installed CPU
- Line up the four screws to socket
- Push down heatsink and screw down as shown (cross pattern, in order: A, B, C, D)
- NOTE: Only use 6-8 lb/f of torque; otherwise, hand-tighten each screw, to avoid damaging the system

MEMORY

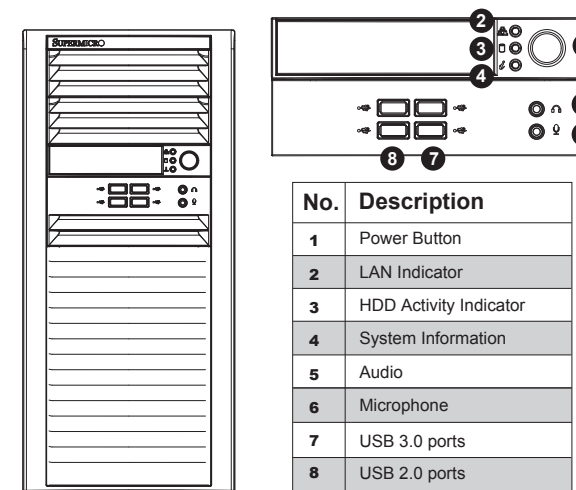
Processor and Memory Module Population	
Number of CPUs+DIMMs	CPU and Memory Population Configuration Table (For memory to work properly, please install DIMMs as shown below.)
1 CPU & 2 DIMMs	CPU1 P1-1A/P1-3A
1 CPU & 3 DIMMs	CPU1 P1-1A/P1-3A, P1-2A
2 CPUs & 4 DIMMs	CPU1 + CPU2 P1-1A/P1-3A, P2-1A/P2-3A
2 CPUs & 6 DIMMs	CPU1 + CPU2 P1-1A/P1-3A/P1-2A, P2-1A/P2-3A/P2-2A

Processor Memory Support		
Ranks Per DIMM & Data Width (Note 1)	Memory Capacity Per DIMM (Note 2)	Speed (MT/s) and Voltage Validated by Slot Per Channel (SPC) and DIMM Per Channel (DPC) (Notes 3, 4, 5, 6)
		1 Slot Per Channel
		1DPC
		1.35V
QRx4 (DDP) (Note 7)	16 GB 32 GB	1066
QRx8 (P) (Note 8)	8GB 16 GB	1066

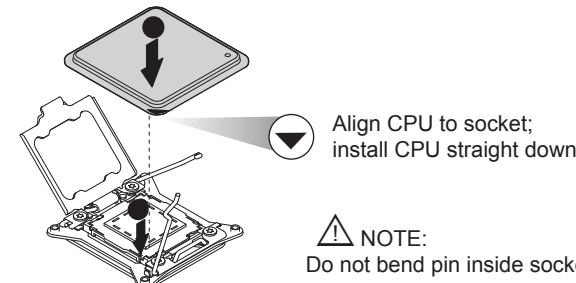
Processors and their Corresponding Memory Modules			
CPU#	Corresponding DIMM Modules		
CPU 1	P1-1A	P1-2A	P1-3A
CPU 2	P2-1A	P2-2A	P2-3A

- Notes:
- Physical Rank is used to calculate DIMM capacity.
 - Command Address Timing is 1N.
 - Only 2Gb/4Gb DRAMs are supported and validated.
 - The speeds listed are estimated only and will be verified through simulation.
 - Please refer to the ES-4600 Platform Design Guide for memory population rules.
 - For 3SPC/3DPC-Rank Multiplication (RM) is >=2.
 - DDP is for Dual Die Package DRAM stacking.
 - "P" Means "Planer Monolithic DRAM Die."

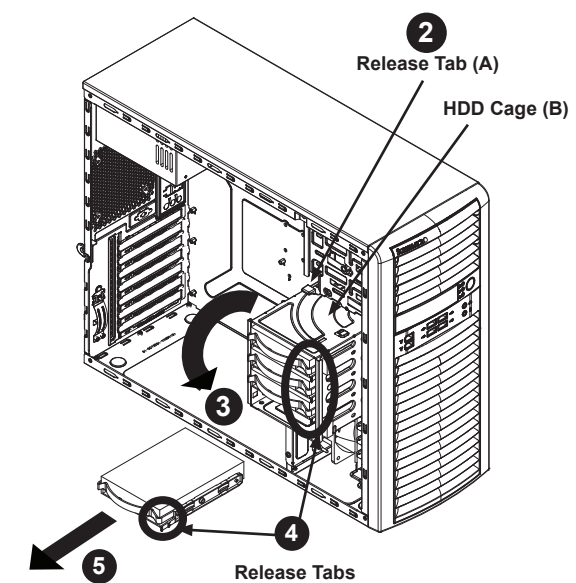
Front View & Interface



CPU Installation



Hard Drives Installation



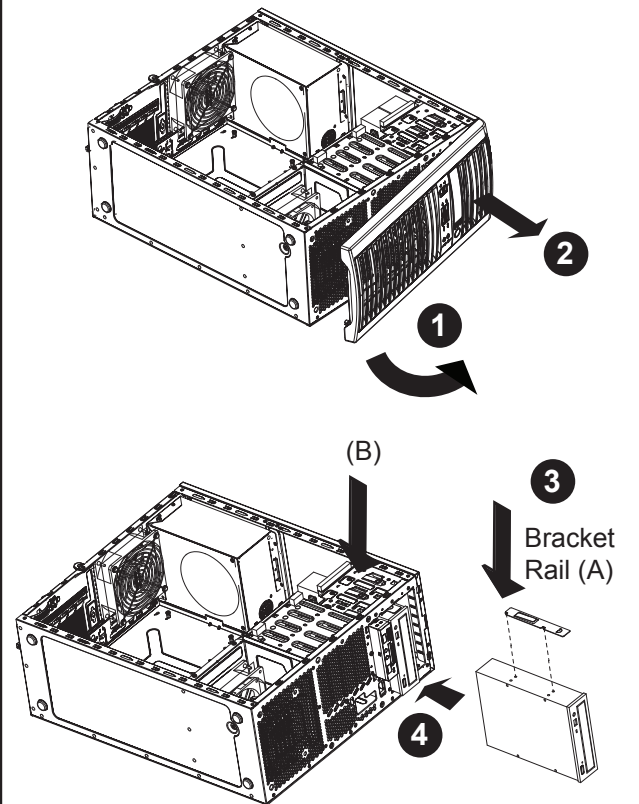
Removing and Installing 3.5" Hard Drives

- Disconnect the chassis from any power source.
- Rotate the hard drive cage outward 90 degrees.
- Disconnect all of the cables from the hard drive.
- Press the release tab on the side of the hard drive carrier that is to be removed from the hard drive cage.
- Gently slide the hard drive carrier out of the hard drive cage.

Installing an Optical Device

Installing an Optical Device

- Remove the front bezel from the chassis by lifting it upwards from the bottom, and pulling off the front of the chassis.
- Remove the cover plate from the optical device slot on the front of the chassis.
- Install the bracket rail (A) onto one side of the optical device, by inserting the pins of the bracket into the mounting holes on the sides of the optical device.
- Slide the optical device into the chassis.
- If desired, screws may be used where indicated below (B) to secure the optical device into chassis.



Caution

SAFETY INFORMATION
IMPORTANT: See installation instructions and safety warning before connecting system to power supply.
http://www.supermicro.com/about/policies/safety_information.cfm

WARNING:
To reduce risk of electric shock/damage to equipment, disconnect power from server by disconnecting all power cords from electrical outlets.
If any CPU socket empty, install protective plastic CPU cap

CAUTION:
Always be sure all power supplies for this system have the same power output. If mixed power supplies are installed, the system will not operate.

For more information go to <http://www.supermicro.com/support>

