

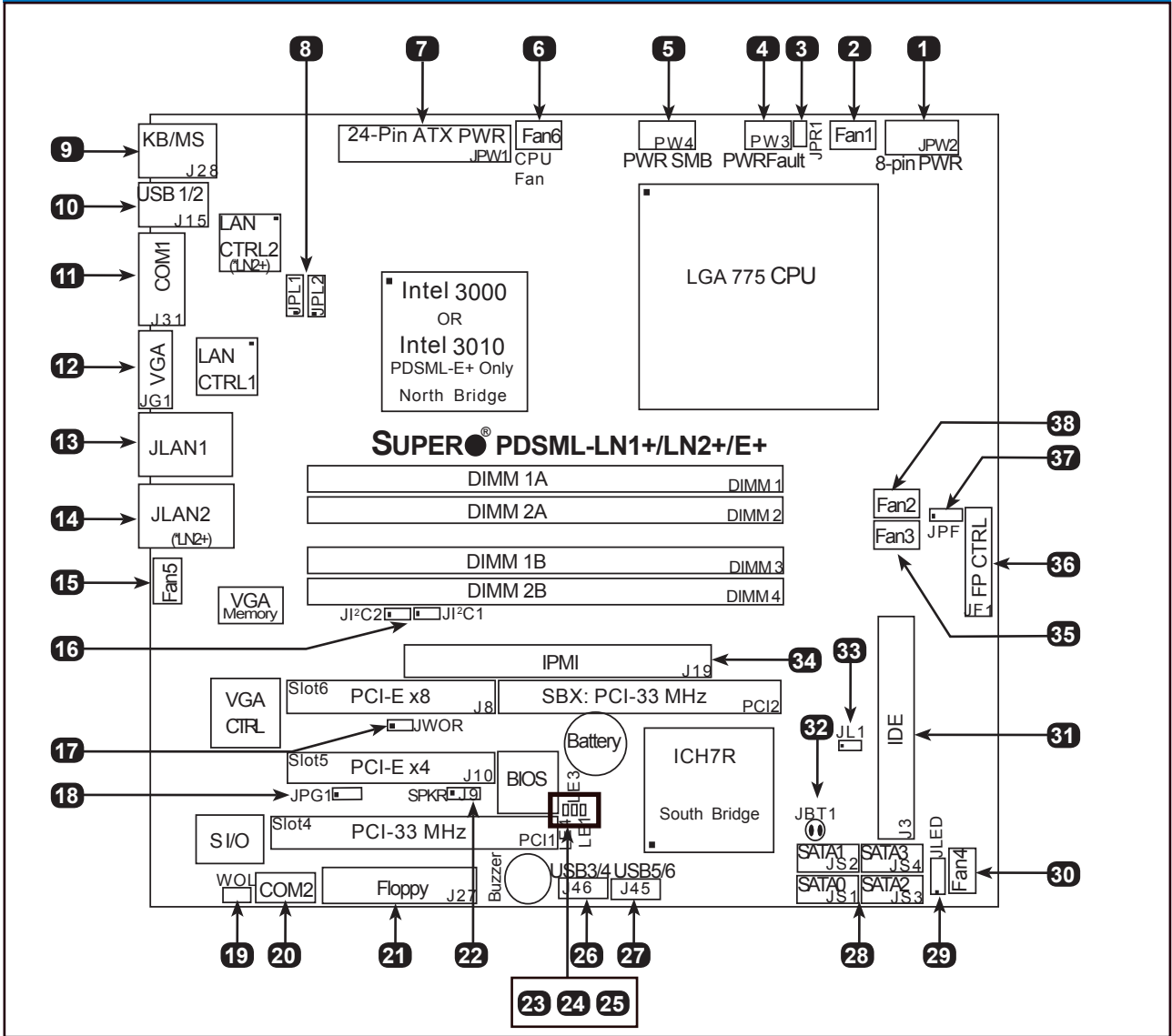
CONTACT INFORMATION

- www.supermicro.com (Email: support@supermicro.com)
- Manuals: <http://www.supermicro.com/support/manuals>
- Drivers & Utilities: <ftp://ftp.supermicro.com>
- Safety: http://www.supermicro.com/about/policies/safety_information.cfm

PACKAGE CONTENTS (Applies to individual-pack only)

- One (1) Supermicro Motherboard
- One (1) IDE Cable
- One (1) I/O Shield
- Four (4) SATA Cables (for PDSML-LN2+ and PDSML-E+ only)
- One (1) Floppy Drive Cable (for PDSML-LN2+ and PDSML-E+ only)
- One Quick Reference Guide

Motherboard Layout and Features



Jumpers, Connectors and LED Indicators

Jumpers			
Item #	Jumper	Description	Default
8	JPL1/JPL2	Giga-bit LAN 1/2 Enable	Pins 1-2 (Enabled)
16	J1C1/J1C2	I ² C Bus to PCI Slots 1/2	Open (Disabled)
18	JPG1	VGA Enable	Pins 1-2 (Enabled)
32	JBT1	CMOS Clear	See Chapter 2 in User Manual
37	JPF	Power Force-On	Open (Disabled)

Connectors		
Item #	Connector	Description
1	JPW2	12V 8-pin PWR Connector
2, 35, 38	Fans 1, 3, 2	System Fan Headers
3	JPR1	Redundant Power Alarm Reset
4	PW3	Power Fault Header
5	PW4	Power SMB (System Management Bus) Connector
6, 15, 30	Fans 6, 5, 4	System Fan Headers (Fans 4 & 5), Fan 6: CPU Fan
7	JPW1	ATX 24-pin Power Connector
9	KB/MS	PS/2 Keyboard/Mouse Connectors
10	USB 1/2	Back Panel Universal Serial Bus Ports 1 & 2
11, 20	COM1, COM2	COM Port 1 & COM Port 2 Header
12	VGA	VGA Connector
13, 14	JLAN1, JLAN2	Ethernet RJ45 (Gigabit LAN) Port1 and Port2 Connections (JLAN2 for PDSML-LN2+ and PDSML-E+ only)
17	JWOR	Wake On Ring Header
19	WOL	Wake On LAN Header
21	J27 (Floppy)	Floppy Disk Connector
22	SPKR	Speaker Connector (Pins 3-4: Internal, Pins 1-4: External)
26, 27	USB 3/4, 5/6	Front Panel Accessible USB Ports 3, 4, 5, 6
28	(JS1-JS4) SATA 0-3	Intel SATA Ports (0-3)
29	JLED	PWR LED Header
31	J3 (IDE)	IDE#1 Slot
33	JL1	Chassis Intrusion Header
34	J19 (IPMI)	IPMI 2.0 Slot

LED Indicators		
Item #	LED	Description
23	LE4	BIOS POST Code Indicator
24	LE3	BIOS POST Code Indicator
25	LE1	Onboard PWR warning LED Indicator

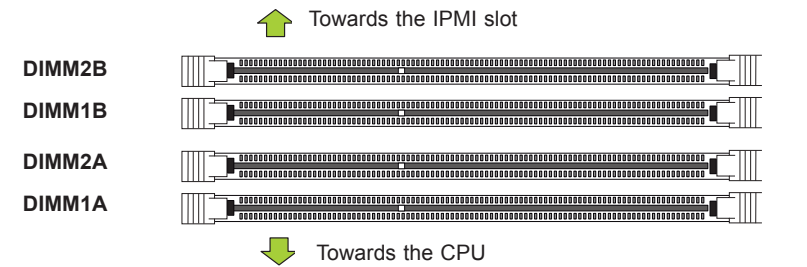
Note: Refer to Chapter 1 of the User Manual for detailed information on jumpers, connectors, and LED indicators.

Memory Support

This motherboard supports up to 8GB of dual channel, ECC/Non-ECC unbuffered DDR2 667/533 MHz SDRAM in 4 memory slots.

Note: For memory optimization, use only DIMM modules that have been validated by Supermicro. For the latest memory updates, please refer to our website at <http://www.supermicro.com/products/motherboard>.

DIMM Memory Installation



Memory Population Guidelines

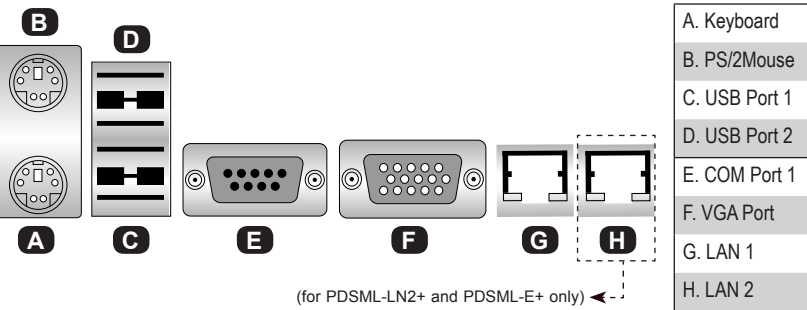
When installing memory modules, the DIMM slots should be populated in the following order: DIMM1A, DIMM1B and DIMM2A, DIMM2B.

- Always use DDR2 DIMM modules of the same size, type and speed.
- Mixed DIMM speeds can be installed. However, all DIMMs will run at the speed of the slowest DIMM.
- The motherboard will support one DIMM module. However for best memory performance, install DIMM modules in pairs.

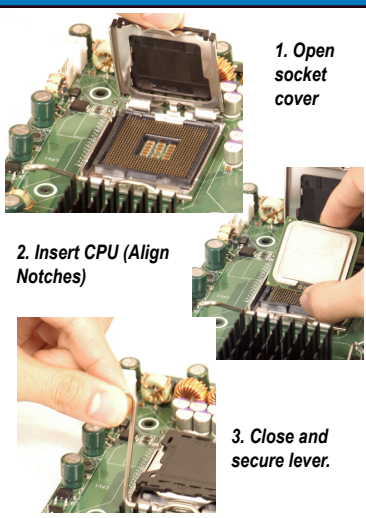
Recommended Population (Balanced)				
DIMM1A Slot	DIMM1B Slot	DIMM2A Slot	DIMM2B Slot	Total System Memory
1GB	1GB			2GB
1GB	1GB	1GB	1GB	4GB
2GB	2GB			4GB
2GB	2GB	2GB	2GB	8GB

Note: Due to memory allocation to system devices, the amount of memory that remains available for operational use will be reduced when 4 GB of RAM is used.

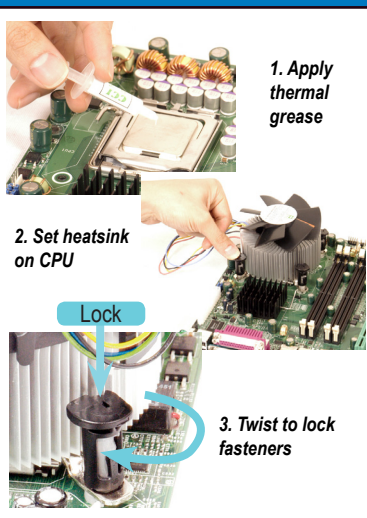
Back Panel I/O Connectors



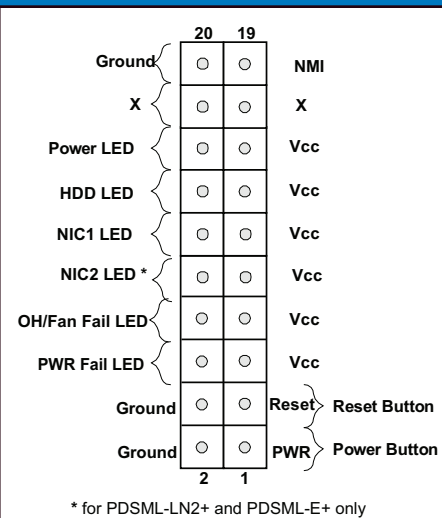
CPU Installation



Heatsink Installation



Front Panel Control (JF1)



Note: Graphics shown in this quick reference guide are for illustration only. Your components may or may not look exactly the same as drawings shown in this guide.