

CONTACT INFORMATION

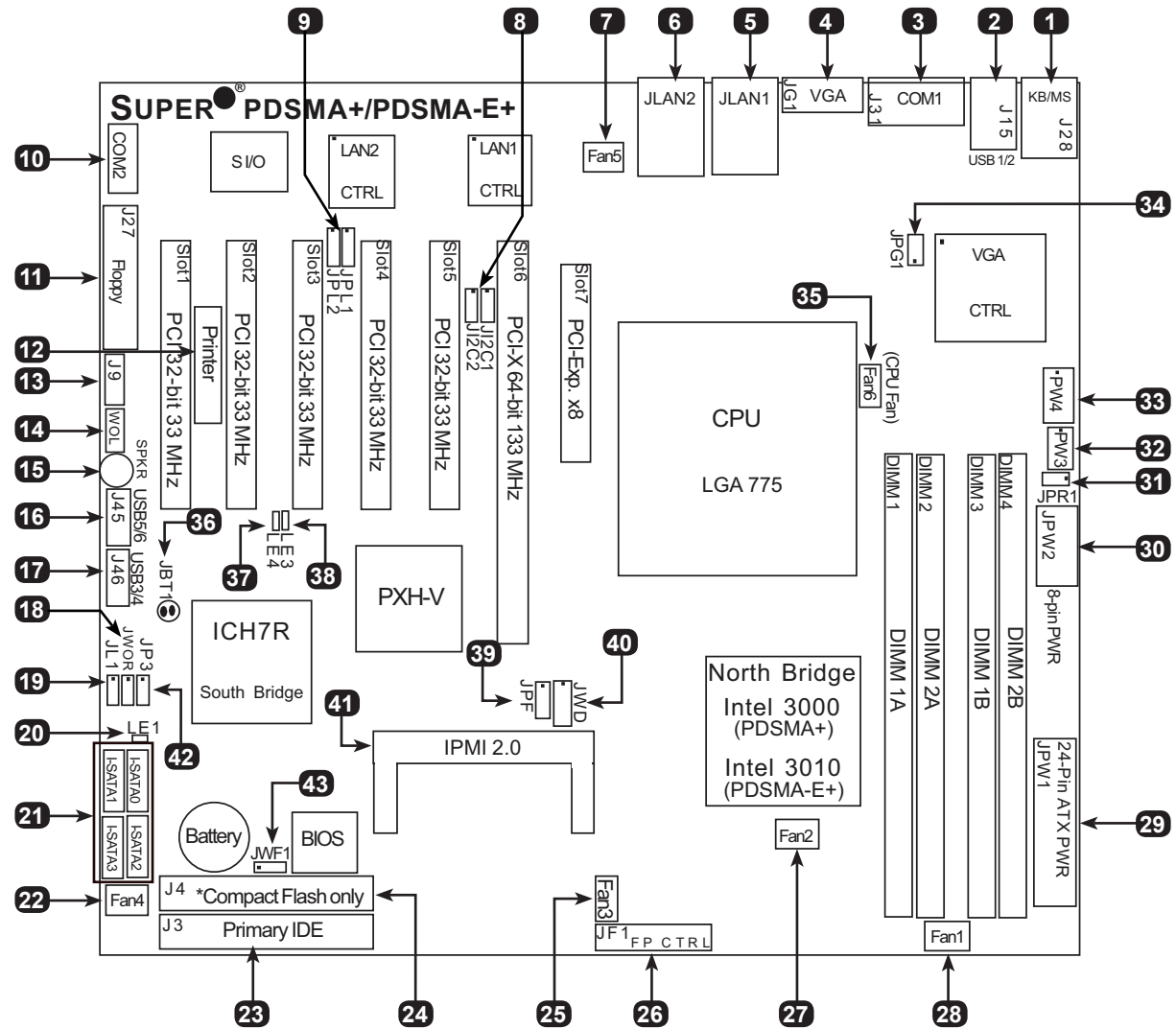
- www.supermicro.com (Email: support@supermicro.com)
- Manuals: <http://www.supermicro.com/support/manuals>
- Drivers & Utilities: <ftp://ftp.supermicro.com>
- Safety: http://www.supermicro.com/about/policies/safety_information.cfm

PACKAGE CONTENTS (Applies to individual-pack only)

- One (1) Supermicro Motherboard
- One (1) IDE Cable
- Four (4) SATA Cables

- One (1) Floppy Drive Ribbon Cable
- One (1) I/O Shield
- One Quick Reference Guide

Motherboard Layout and Features



Jumpers, Connectors and LED Indicators

Jumpers			
Item #	Jumper	Description	Default
8	JPC1, JPC2	SBus to PCI Slot	Open/Open (Disabled)
9	JPL1, JPL2	Giga-bit LAN1/LAN2 Enable	Pins 1-2 (Enabled)
34	JPG1	VGA Enable	Pins 1-2 (Enabled)
36	JBT1	CMOS Clear	See Section 2-7 in Manual
39	JPF	Power Force-On	Open (Disabled)
40	JWD	Watch Dog Enable	Pins 1-2 (Reset)
42	JP3	Compact Flash Master/Slave	Closed (Master)

Connectors		
Item #	Connector	Description
1	KB/MS	PS/2 Keyboard and Mouse
2	USB 1/2	Back Panel Universal Serial Bus Ports 1 & 2
3, 10	COM1, COM2	COM Port1, COM 2 Header
4	VGA	VGA Connector
5, 6	JLAN1, JLAN2	Ethernet RJ45 (Gigabit LAN) Port1/Port2 Connectors
7, 22, 35	Fan5, Fan4, Fan6	System Fan Headers (Fan 4, 5); CPU (Fan6)
11	Floppy (J27)	Floppy Disk Connector
12	Printer	Parallel Port Header
13	J9	Speaker Connector (Pins 3-4: Internal Buzzer)
14	WOL	Wake On LAN Header
15	SPKR	Internal Buzzer
16, 17	USB 5/6, USB 3/4	Front Panel Accessible USB Headers
18	JWOR	Wake On Ring Header
19	JL1	Chassis Intrusion Header
21	I-SATA 0~3	Intel SATA Headers
23	Primary IDE (J3)	IDE Master (See notes on page 1-4 in User Manual)
24	J4	Compact Flash (See notes on page 1-4 in User Manual)
25, 27, 28	Fan3, Fan2, Fan1	System Fan Headers
26	FP CTRL (JF1)	Front Panel Control header
29	24-Pin ATX PWR (JPW1)	ATX 24-Pin Power Connector
30	8-Pin ATX PWR (JPW2)	12V 8-Pin Power Connector (required)
31	JPR1	Alarm Reset
32	PW3	Power Fault Header (See Chapter 2 in User Manual)
33	PW4	Power System Management Bus (I ² C)
41	IPMI	IPMI 2.0 Socket
43	JWF1	Compact Flash PWR Connector

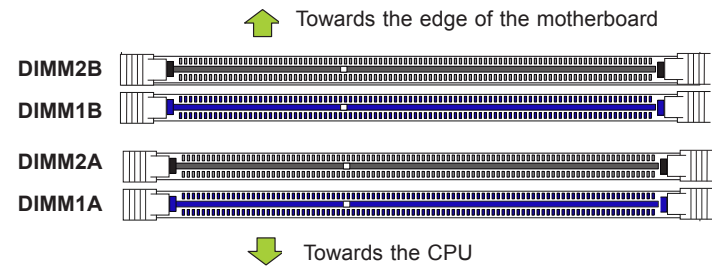
LED Indicators		
Item #	LED	Description
20	LE1	Onboard PWR warning LED Indicator
37, 38	LE4, LE3	BIOS POST Code Indicator

Memory Support

This motherboard supports up to 8GB of dual channel, ECC/Non-ECC unbuffered DDR2 667/533/400 MHz SDRAM in 4 memory slots.

Note: For memory optimization, use only DIMM modules that have been validated by Supermicro. For the latest memory updates, please refer to our website at <http://www.supermicro.com/products/motherboard>.

DIMM Memory Installation

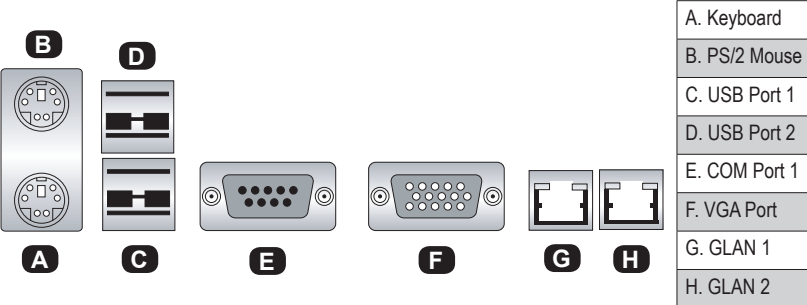


Memory Population Guidelines

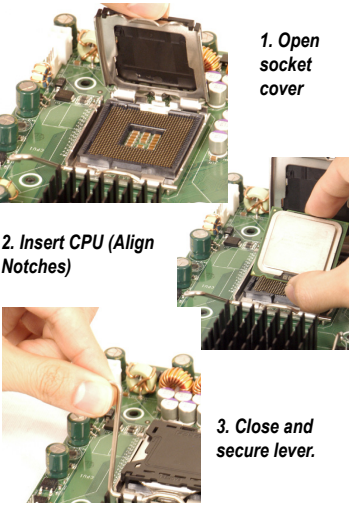
When installing memory modules, the DIMM slots should be populated in the following order: DIMM1A, DIMM1B and DIMM2A, DIMM2B.

Possible System Memory Allocation & Availability		
System Device	Size	Physical Memory Remaining (-Available) (4 GB Total System Memory)
Firmware Hub flash memory (System BIOS)	1 MB	3.99
Local APIC	4 KB	3.99
Area Reserved for the chipset	2 MB	3.99
I/O APIC (4 Kbytes)	4 KB	3.99
PCI Enumeration Area 1	256 MB	3.76
PCI Express (256 MB)	256 MB	3.51
PCI Enumeration Area 2 (if needed) -Aligned on 256-MB boundary-	512 MB	3.01
VGA Memory	16 MB	2.85
TSEG	1 MB	2.84
Memory available to OS and other applications		2.84

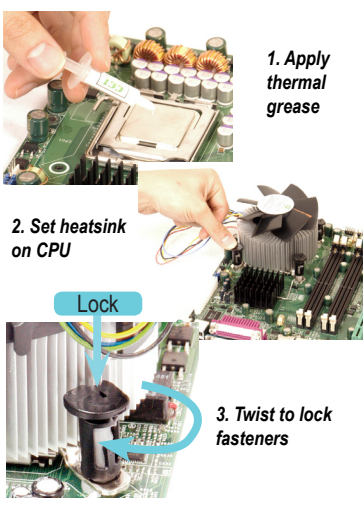
Back Panel I/O Connectors



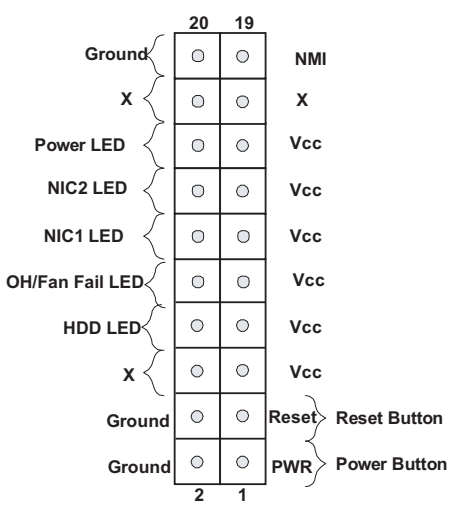
CPU Installation



Heatsink Installation



Front Panel Control (JF1)



Note: Graphics shown in this quick reference guide are for illustration only. Your components may or may not look exactly the same as drawings shown in this guide.

Note: Refer to Chapter 1 of the User Manual for detailed information on jumpers, connectors, and LED indicators.