

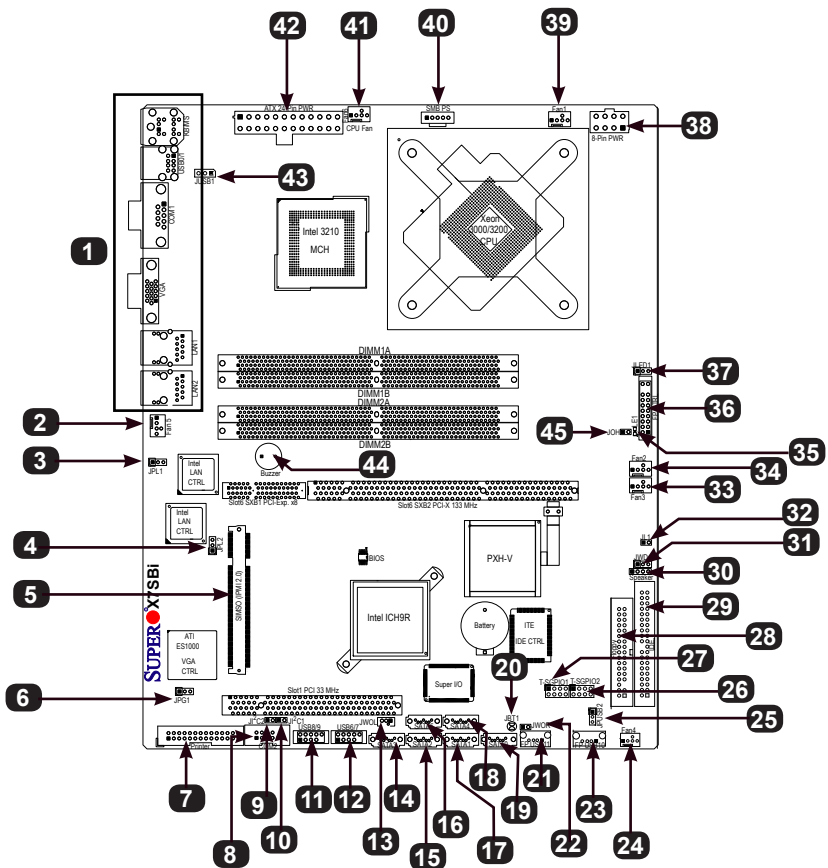
CONTACT INFORMATION

- www.supermicro.com (Email: support@supermicro.com)
- Manuals: <http://www.supermicro.com/support/manuals>
- Drivers & Utilities: <ftp://ftp.supermicro.com>
- Safety: [http://www.supermicro.com/about/policies/safety\\_information.cfm](http://www.supermicro.com/about/policies/safety_information.cfm)

PACKAGE CONTENTS (Applies to individual-pack only)

- One (1) Supermicro Motherboard
- Four (4) SATA Cables
- One (1) Floppy Drive Ribbon Cable
- One (1) I/O Shield
- One (1) Quick Reference Guide

Motherboard Layout and Features



Jumpers, Connectors and LED Indicators

Jumpers

| Label | Jumper                                | Description                             | Default                            |
|-------|---------------------------------------|---|------------------------------------|
| 20    | JBT1                                  | CMOS Clear                              | See Chapter 2 in the User's Manual |
| 10,9  | J1 <sup>2</sup> C1/J1 <sup>2</sup> C2 | I <sup>2</sup> C (SMB) Bus to PCI slots | Open/Open (Disabled)               |
| 6     | JPG1                                  | VGA Enable                              | Pins 1-2 (Enabled)                 |
| 3,4   | JPL1,JPL2                             | Giga-bit LAN 1/2 Enable                 | Open (Enabled)                     |
| 43    | JPUSB1                                | BP USB Wake Up (USB 0/1)                | Pins 1-2 (Enabled)                 |
| 25    | JPUSB2                                | FP USB Wake Up(USB 2~7)                 | Pins 1-2 (Enabled)                 |
| 31    | JWD                                   | Watch Dog                               | Pins 1-2 (Reset)                   |

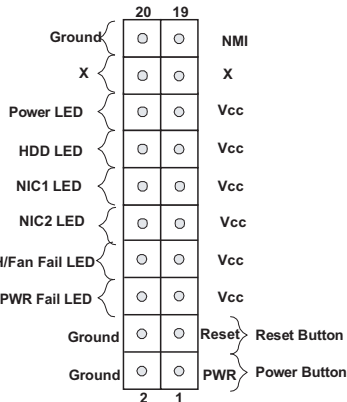
Connectors

| Label             | Connectors   | Description  |
|-------------------|--------------|--|
| 1                 | BP I/O       | See Backpanel I/O Connectors, below right            |
| 8                 | COM2         | COM 2 Header   |
| 39,34,33,24,2,41  | Fans 1-6     | System Fan Headers (Fans 1-5), Fan6: CPU Fan         |
| 28                | Floppy       | Floppy Disk Drive Connector                          |
| 29                | IDE          | IDE Slot (Blue) (J3)                                 |
| 19,17,15,14,18,16 | I-SATA0~5    | SATA Ports   |
| 30                | JD1          | Speaker Connector                                    |
| 36                | JF1          | Front Panel Control Header                           |
| 32                | JL1          | Chassis Intrusion Header                             |
| 37                | JLED1        | Power LED Header                                     |
| 42                | JPW1         | ATX 24-Pin Power Connector                           |
| 38                | JPW2         | 12V 8-pin Power Connector (Required)                 |
| 13                | JWOL         | Wake On LAN Header                                   |
| 22                | JWOR         | Wake On Ring Header                                  |
| 7                 | Printer      | Parallel Port (Printer) Header                       |
| 5                 | SIMSO IPMI   | SIMSO IPMI 2.0 Socket                                |
| 40                | SMB_PS       | Power Supply SMBus Header (I <sup>2</sup> C)         |
| 44                | SPK1         | Internal Buzzer                                      |
| 27,26             | T-SGPIO 1/2  | Serial General Purpose Input/Output Headers 1/2      |
| 12,11             | USB 6/7, 8/9 | Front Panel Accessible USB Headers 6/7, 8/9(44, J45) |
| 23,21             | USB 10, 11   | Front Panel (Onboard) USB Ports 10,11 (J47, J48)     |
| 45                | JOH          | System Overheat Header                               |

LED Indicators

| Label | LED | Description                               |
|-------|-----|---|
| 35    | LE1 | Onboard Standby PWR warning LED Indicator |

Front Panel Control (JF1)



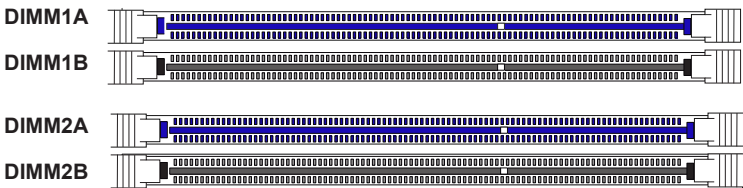
Memory Support

The X7Sbi supports up to 8 GB of Dual channel, unbuffered ECC/Non-ECC DDR2 800/667 memory in 4 DIMM slots. Both interleaved and non-interleaved memory are supported, so you may populate any number of DIMM slots. (Populating DIMM1A, DIMM2A, then DIMM1B, DIMM2B with memory modules of the same size and of the same type will result in dual channel, two-way interleaved memory which is faster than the single channel, non-interleaved memory. When ECC memory is used, it may take 25-40 seconds for the VGA to display.)

**Note:** For memory optimization, use only DIMM modules that have been validated by Supermicro. For the latest memory updates, please refer to our website at <http://www.supermicro.com/products/motherboard>.

DIMM Installation

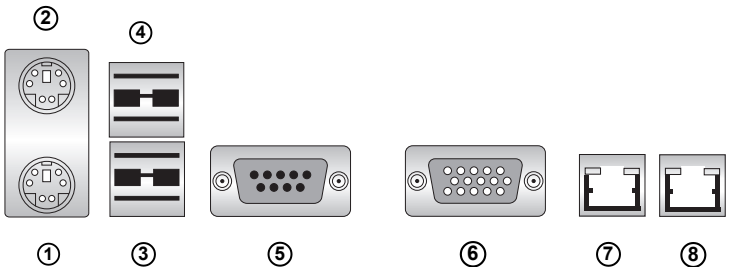
↑ Towards the CPU



↓ Towards the PCI slot on the motherboard

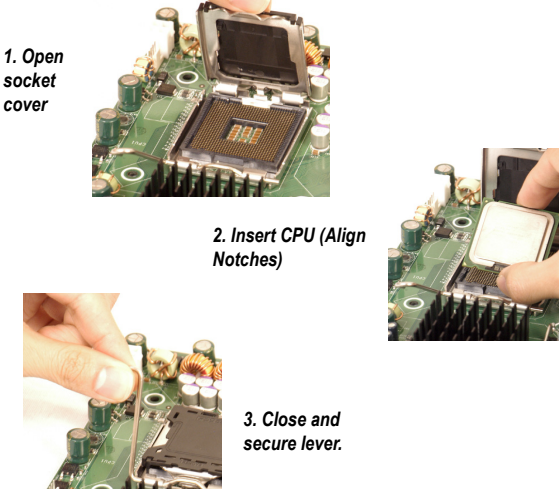
**Note:** Please populate in the following order: DIMM1A, DIMM2A, DIMM1B, DIMM2B.

Back Panel I/O Connectors

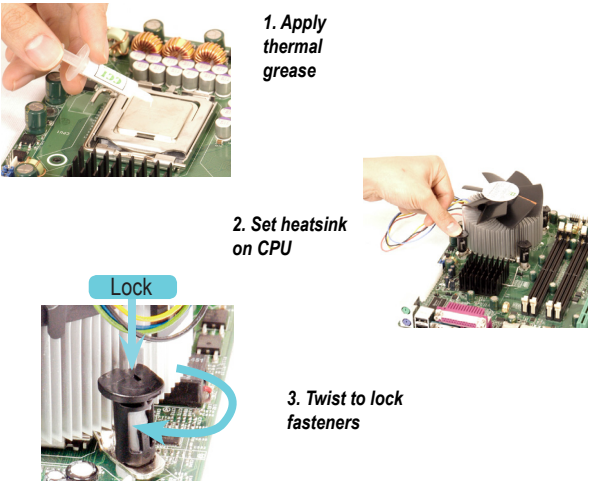


|               |
|---------------|
| 1. Keyboard   |
| 2. PS/2 Mouse |
| 3. USB Port 0 |
| 4. USB Port 1 |
| 5. COM 1      |
| 6. VGA        |
| 7. LAN1       |
| 8. LAN 2      |

CPU Installation



Heatsink Installation



**Note:** Graphics shown in this quick reference guide are for illustration only. Your components may or may not look exactly the same as drawings shown in this guide.

**Note:** Refer to Chapter 2 of the User Manual for detailed information on jumpers, connectors, and LED indicators.

**Note:** Refer to Chapter 2 of the User Manual for detailed information on memory support and CPU/motherboard installation instructions.