

CONTACT INFORMATION

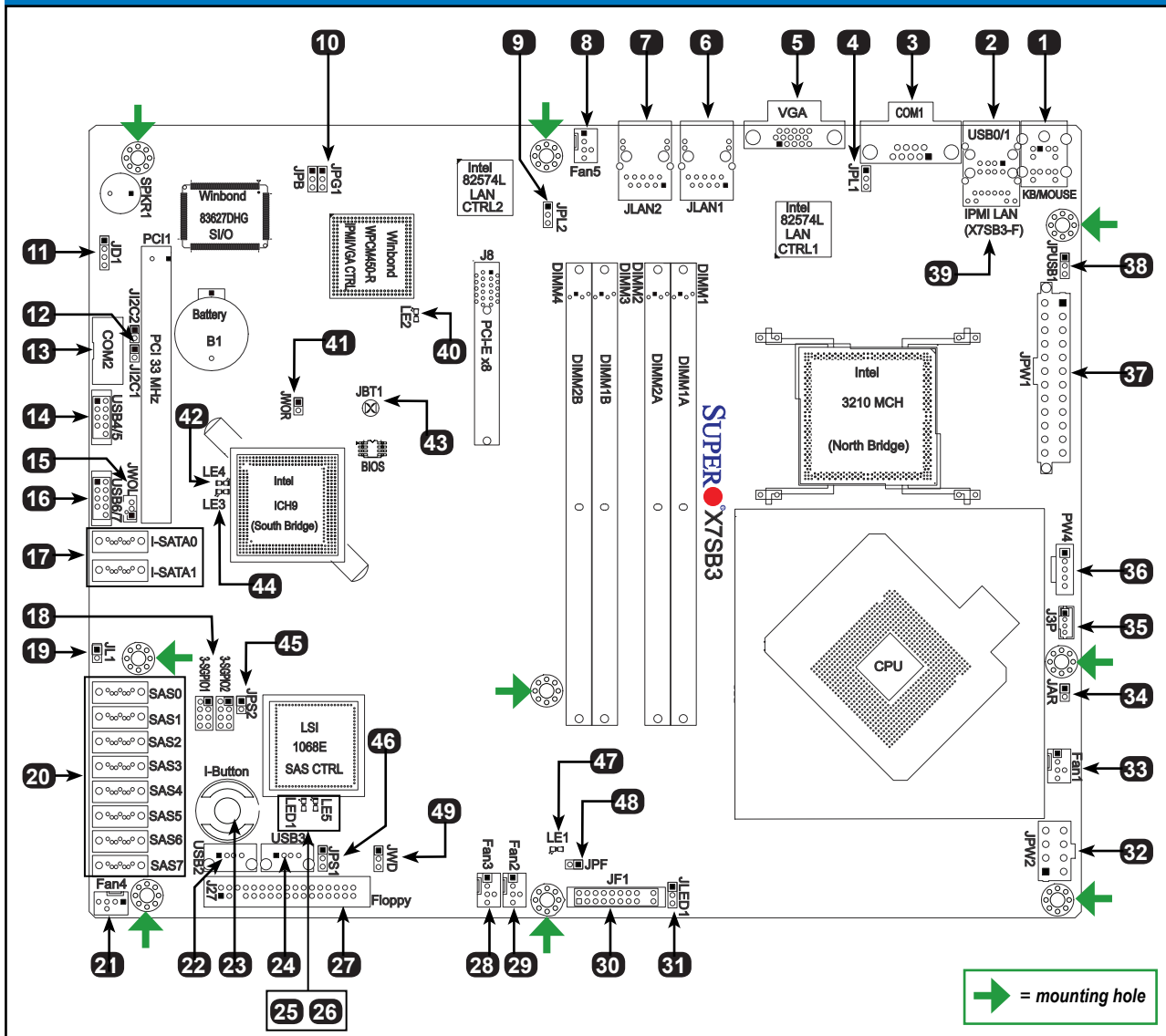
- www.supermicro.com (Email: support@supermicro.com)
- Manuals: <http://www.supermicro.com/support/manuals>
- Drivers & Utilities: <ftp://ftp.supermicro.com>
- Safety: http://www.supermicro.com/about/policies/safety_information.cfm

PACKAGE CONTENTS

(Applies to individual-pack only)

- One (1) I/O Shield
- Six (6) SATA Cables
- One (1) Floppy Drive Ribbon Cable
- One (1) Quick Reference Guide

Motherboard Layout and Features



Jumpers, Connectors and LED Indicators

Jumpers			
Item #	Jumper	Description	Default
4, 9	JPL1, JPL2	LAN1/2 Enable/Disable	Pins 1-2 (Enabled)
10	JPG1	(BMC) VGA Enable	Pins 1-2 (Enabled)
12	J12C1/J12C2	SMB to PCI slots Enable	Off (Disabled)
38	JPUSB1	BP USB Wake-up Enable	Pins 1-2 (Enabled)
43	JBT1	CMOS Clear	(See Chpt. 2 in User Manual)
45	JPS2	SAS ID/RAID Mode Select	Closed (Software RAID)
46	JPS1	SAS Enable/Disable	Pins 1-2 (Enabled)
48	JPF	Power Force-On	Off (Normal)
49	JWD	Watch Dog	Pins 1-2 (Reset)

Connectors		
Item #	Connector	Description
1	KB/Mouse	PS/2 Keyboard and Mouse
2	USB 0/1	Back Panel USB Ports
3, 13	COM1, COM2	COM Port 1, COM2 Header
5	VGA	VGA Connector
6, 7	JLAN1, JLAN2	Gigabit Ethernet (RJ45) Ports
8, 21, 28, 29, 33	Fan 5, 4, 3, 2, 1	Chassis and System Fans (CPU: Fan 1)
11	JD1	Onboard Speaker Header (Pins 3-4: Internal)
14, 16	USB 4/5, 6/7	Front Panel USB Ports
15	JWOL	Wake-On-LAN Header
17	I-SATA 0/1	Serial ATA Ports
18	3-SGPIIO 1/2	Serial-Link General Purpose I/O Headers
19	JL1	Chassis Intrusion Header
20	SAS 0-7	Serial Attached SCSI Connectors
22, 24	USB 2, USB 3	Front Panel Accessible USB Connectors
23	I-Button	I-Button Socket (see page 2-25 in User Manual)
27	Floppy	Floppy Drive Connector
30	JF1	Front Panel Control Connector
31	JLED1	Onboard Power LED
32	JPW2	12V 8-Pin Auxiliary PWR Connector
34	JAR	Alarm Reset
35	J3P (Optional)	Redundant PWR Fail Detect (for internal use)
36	PW4	Power Supply SMB (I ² C) Connector (X7SB3-F only)
37	JPW1	ATX Main Power Connector
39	IPMI LAN	Dedicated LAN for IPMI (X7SB3-F only)
41	JWOR	Wake-On-Ring Header

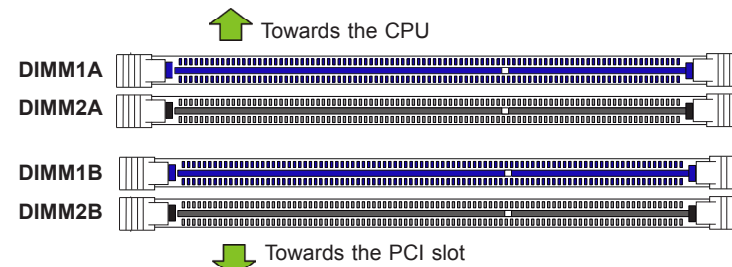
LED Indicators				
Item #	LED	Description	Color/State	Status
25	LED1	SAS Activity LED	Green: Blinking	SAS Active
26	LE5	SAS Heartbeat LED	Yellow: Blinking	SAS Ready
42, 44	LE4, LE3	BIOS POST Codes LED	Reserved for Internal Use	
40	LE2	IPMI Heartbeat LED (X7SB3-F only)	Green: Blinking	IPMI Ready
47	LE1	Onboard Standby Power LED	Green: On	Power On

Memory Support

This motherboard supports up to 8 GB of Unbuffered (UDIMM) DDR2 ECC/Non-ECC 800/667 MHz memory in 4 memory slots.

Note: For memory optimization, use only DIMM modules that have been validated by Supermicro. For the latest memory updates, please refer to our website at <http://www.supermicro.com/products/motherboard>.

DIMM Installation



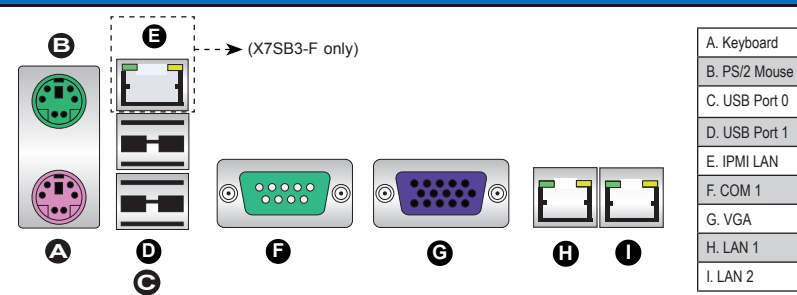
Insert the desired number of DIMMs into the memory slots, starting with DIMM #1A, #1B, then #2A and #2B.

Possible System Memory Allocation & Availability		
System Device	Size	Physical Memory Remaining (-Available) (4 GB Total System Memory)
Firmware Hub flash memory (System BIOS)	1 MB	3.99 GB
Local APIC	4 KB	3.99 GB
Area Reserved for the chipset	2 MB	3.99 GB
I/O APIC (4 Kbytes)	4 KB	3.99 GB
PCI Enumeration Area 1	256 MB	3.76 GB
PCI Express (256 MB)	256 MB	3.51 GB
PCI Enumeration Area 2 (if needed) -Aligned on 256-MB boundary-	512 MB	3.01 GB
VGA Memory	16 MB	2.85 GB
TSEG	1 MB	2.84 GB
Memory available for the OS & other applications		2.84 GB

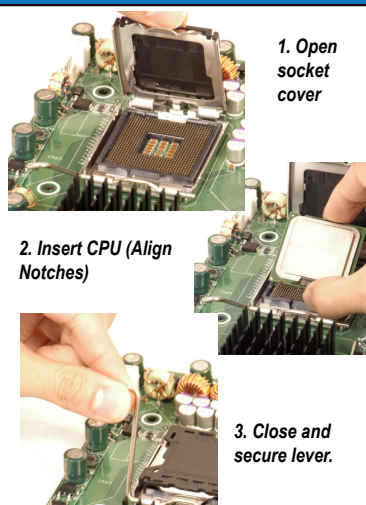
Notes:

1. Due to OS limitations, some operating systems may not show more than 4GB of memory.
2. Due to memory allocation to system devices, memory remaining available for operational use will e reduced when 4 GB of RAM is used.

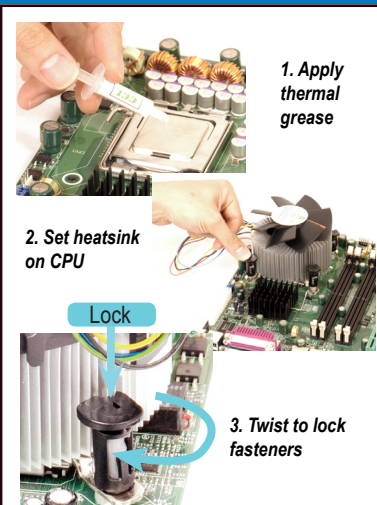
Back Panel IO Connectors



CPU Installation



Heatsink Installation



Front Panel Control (JF1)

Ground	20	19	NMI
X			X
Power LED			Vcc
HDD LED			Vcc
NIC1 LED			Vcc
NIC2 LED			Vcc
OH/Fan Fail LED			Vcc
Power Fail LED			Vcc
Ground			Reset
Ground			PWR
	2	1	

Note: Graphics shown in this quick reference guide are for illustration only. Your components may or may not look exactly the same as drawings shown in this guide.

Note: Refer to Chapter 1 of the User Manual for detailed information on jumpers, connectors, and LED indicators.

Note: Refer to Chapter 2 of the User Manual for detailed information on memory support and CPU/motherboard installation instructions.