

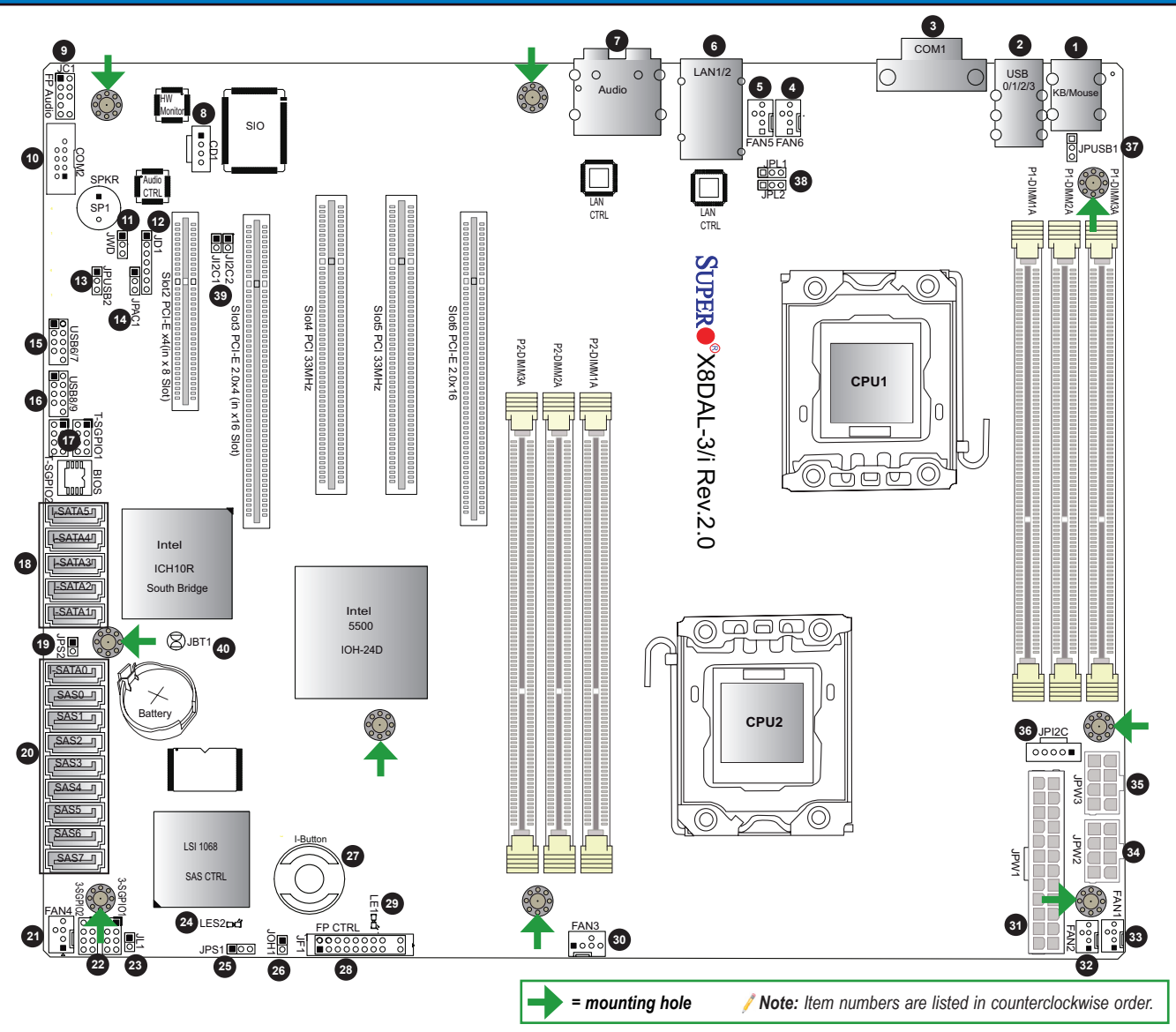
**CONTACT INFORMATION**

- www.supermicro.com (Email: support@supermicro.com)
- Manuals: http://www.supermicro.com/support/manuals
- Drivers & Utilities: ftp://ftp.supermicro.com
- Safety: http://www.supermicro.com/about/policies/safety\_information.cfm

**PACKAGE CONTENTS** (Applies to single-pack only)

- One (1) Supermicro Motherboard
- Six (6) Serial ATA Cables (for X8DAL-i)
- Eight (8) Serial ATA Cables (for X8DAL-3)
- One (1) I/O Back Panel Shield

**Motherboard Layout and Features**



**Jumpers, Connectors, and LED Indicators**

**Jumpers**

Jumper	Item #	Description	Default
JBT1	40	CMOS Clear	See Chpt. 2 in User Manual
JiC1/JiC2	39	SMB to PCI/PCI-E Slots	Open/Open (Disabled)
JPAC1	14	Audio Enabled	Pins 1-2 (Enabled)
JPL1/JPL2	38	LAN1/2 Enable	Pins 1-2 (Enabled)
JPS1	25	SAS Enable (X8DAL-3 only)	Pins 1-2 (Enabled)
JPS2	19	SAS RAID Mode Select (X8DAL-3 only)	Closed (SR RAID)
JPUSB1	37	Backpanel USB Wake-Up	Pins 1-2 (Enabled)
JPUSB2	13	Front Access USB Wake-Up	Pins 2-3 (Disabled)
JWD	11	Watch Dog	Pins 1-2 (Reset)

**Connectors**

Connectors	Item#	Description
Audio	7	Audio Input, Output, Mic
CD1	8	CD-ROM Header
COM1, COM2	3, 10	COM1/COM2 Serial Port/Header
Fan 1-3	33, 32, 30	System/CPU Fan Headers (Fans 1-2: CPU Fans)
Fan 4-6	21, 5, 4	System Fan Headers
I-Button	27	I-Button for HostRAID Storage (X8DAL-3 only)
JC1	9	HD Audio Header
JD1	12	PWR LED/Speaker Header (Pins 4-7: Speaker)
JF1	28	Front Panel Connector
JL1	23	Chassis Intrusion Header
JOH1	26	Overheat LED Header
JPiC	36	Power Supply SMBus iC Header
JPW1	31	24-pin ATX PWR
JPW2, JPW3	34, 35	8-pin Secondary PWR
KB/Mouse	1	Keyboard and PS/2 Mouse
LAN1, LAN2	6	G-LAN (RJ45) Ports
SAS 0-7	20	SAS Ports 0-7 (X8DAL-3 only)
I-SATA0 ~ I-SATA5	18	(Intel South Bridge) SATA Ports
3-SGPIO-1, 3-SGPIO-2	22	Serial General Purpose I/O HDRs for SAS (X8DAL-3 only)
T-SGPIO-1, T-SGPIO-2	17	Serial General Purpose I/O Headers for SATA
USB 0-3	2	Backplane Universal Serial Bus (USB) Ports
USB 6/7, 8/9	15, 16	Front Panel USB Connections

**LED Indicators**

LED	Item#	Description	State	Status
LE1	29	Onboard Standby PWR	On	System Power On
LES2 (for X8DA3)	24	SAS Heartbeat LED	Yellow: Blinking	SAS Normal

**Memory Support**

This motherboard supports up to 96 GB of Registered (RDIMM) ECC or up to 24 GB of Unbuffered (UDIMM) ECC/Non-ECC DDR3 800/1066/1333 MHz 3-channel (per CPU) memory in 6 DIMM slots.

**Note:** For memory optimization, use only DIMM modules that have been validated by Supermicro. For the latest memory updates, please refer to our website at <http://www.supermicro.com/products/motherboard>.

**DIMM Installation**

Insert the desired number of DIMMs into the memory slots, starting with P1-DIMM1A. For memory to work properly, follow the tables below for memory population order. Refer to the motherboard layout (at left) for the location of the DIMM slots.

**Memory Population for Optimal Performance -For a motherboard with One CPU (CPU1) installed**

	Branch 0	Branch 1	Branch 2
3 DIMMs	P1 DIMM1A	P1 DIMM2A	P1 DIMM3A

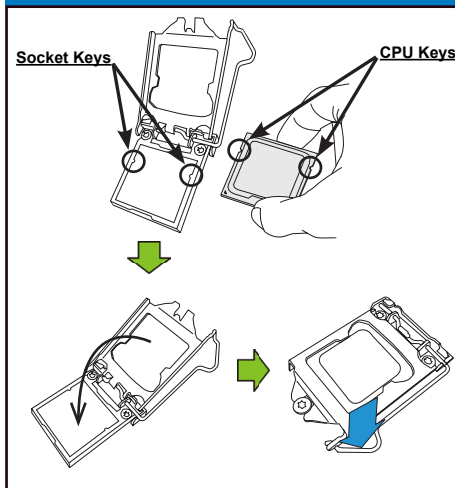
**Memory Population for Optimal Performance -For a motherboard with One CPU (CPU2) installed**

	Branch 0	Branch 1	Branch 2
3 DIMMs	P2 DIMM1A	P2 DIMM2A	P2 DIMM3A

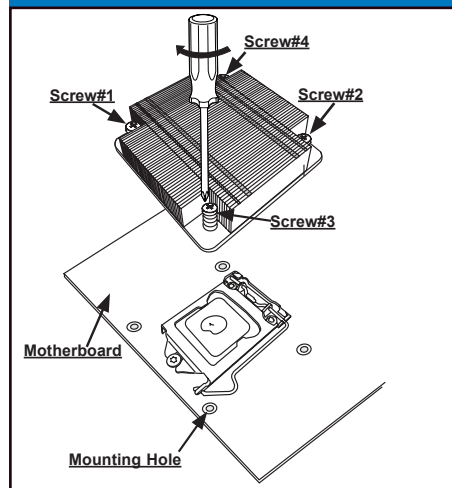
**Memory Population for Optimal Performance -For a motherboard with Two CPUs installed**

	CPU1			CPU2		
	Branch 0	Branch 1	Branch 2	Branch 0	Branch 1	Branch 2
6 DIMMs	P1-DIMM1A	P1-DIMM2A	P1-DIMM3A	P2-DIMM1A	P2-DIMM2A	P2-DIMM3A

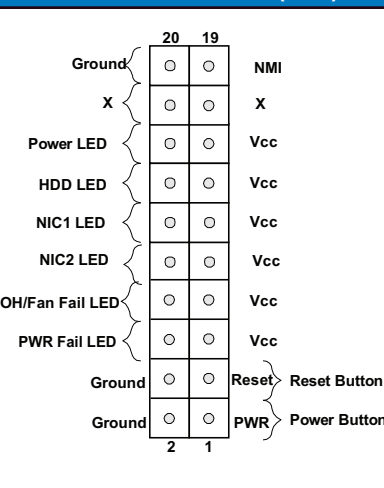
**CPU Installation**



**Heatsink Installation**



**Front Panel Control (JF1)**



**Note:** Graphics shown in this quick guide are for illustration only. Your components may or may not look exactly the same as drawings shown in this guide.

**Note:** Refer to Chapter 2 of the User Manual on detailed information on jumpers, connectors, and LED indicators.

**Note:** Refer to Chapter 2 of the User Manual for detailed information on memory support and CPU/motherboard installation instructions.