

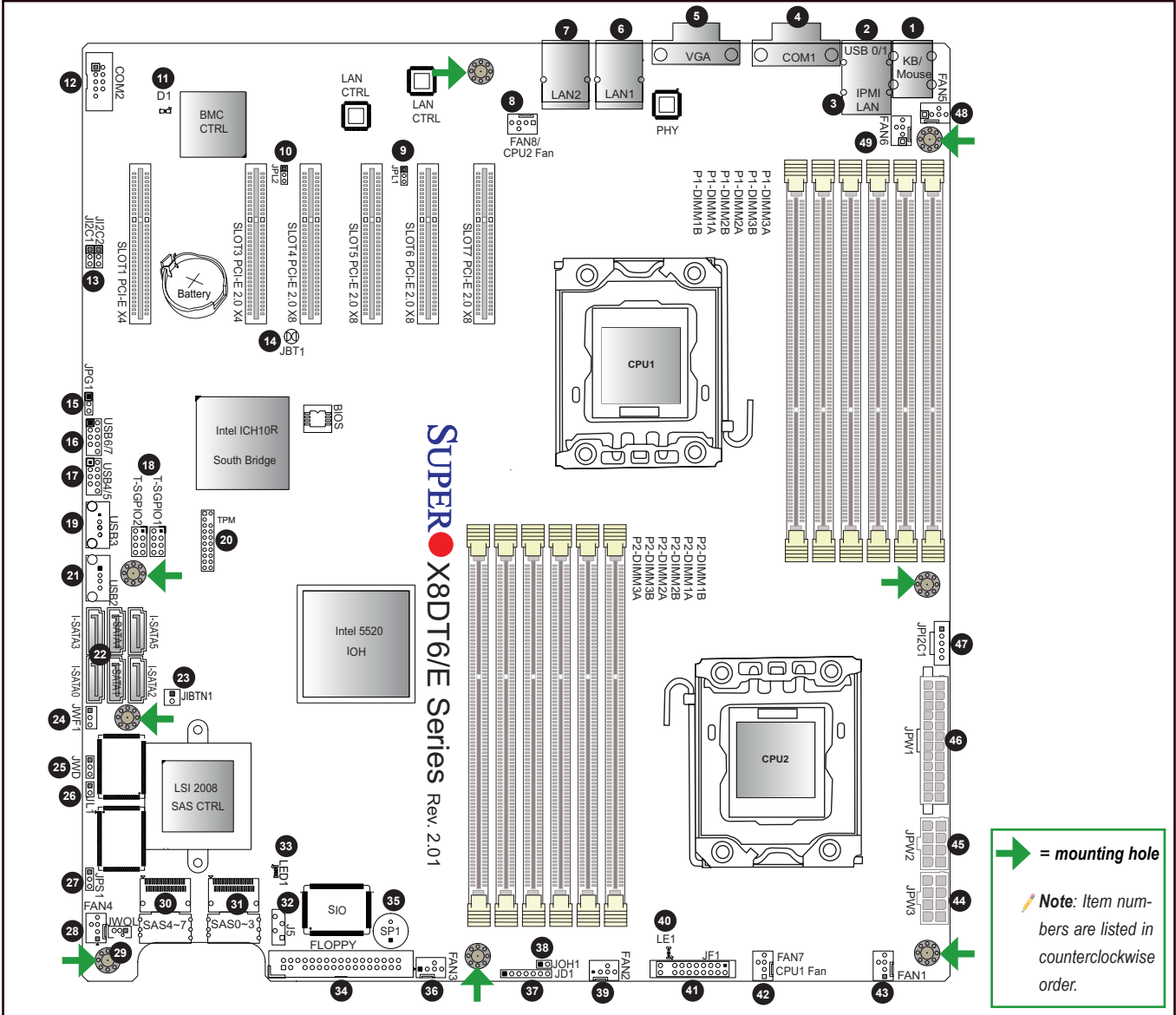
CONTACT INFORMATION

- www.supermicro.com (Email: support@supermicro.com)
- Manuals: <http://www.supermicro.com/support/manuals>
- Drivers & Utilities: <ftp://ftp.supermicro.com>
- Safety: [http://www.supermicro.com/about/policies/safety\\_information.cfm](http://www.supermicro.com/about/policies/safety_information.cfm)

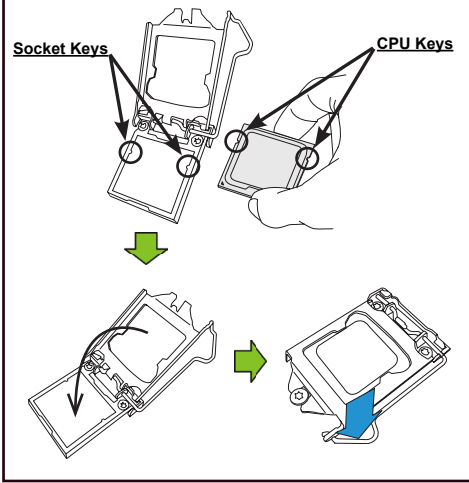
PACKAGE CONTENTS (Applies to single-pack only)

- One (1) Supermicro Motherboard
- One (1) Floppy Ribbon Cable
- One (1) USB Cable
- One (1) Serial/COM Cable
- Four (4) Serial ATA Cables (X8DT6 & X8DT6-F)
- Six (6) Serial ATA Cables (X8DTE & X8DTE-F)
- Two (2) SAS cables for SATA/SAS Backplane for X8DT6(-F)
- One (1) I/O Back Panel Shield

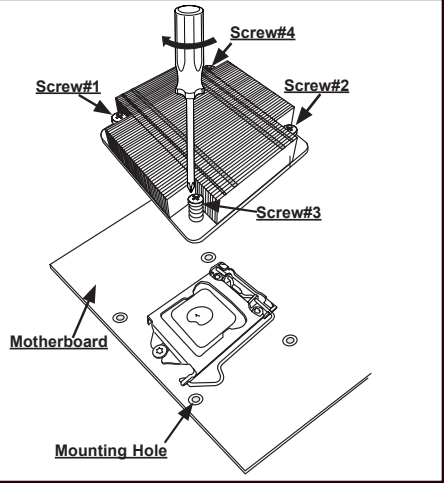
Motherboard Layout and Features



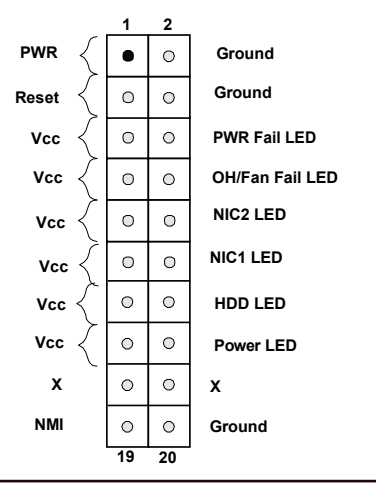
CPU Installation



Heatsink Installation



Front Panel Control (JF1)



Jumpers, Connectors, and LED Indicators

Jumpers

Jumper	Item #	Description	Default
JBT1	14	CMOS Clear	(See Chapter 2 in User Manual)
J12C1/J12C2	13	SMB to PCI Slots	2-3 (Disabled)
JPG1	15	VGA Enable	Pins 1-2 (Enabled)
JPL1/JPL2	9, 10	LAN Ports 1/2 Enable	Pins 1-2 (Enabled) (For a Rev. 1.31 or later board)
JPS1	27	SAS Enable	Pins 1-2 (Enabled) (X8DT6/X8DT6-F)
JWD	25	Watch Dog	Pins 1-2 (Reset)

Connectors

Connectors	Item#	Description
COM1/COM2	4, 12	COM1/COM2 Serial Port/Header
FAN 1-4	43, 39, 36, 28	System Fan Headers
FAN 5-8	48, 49, 42, 8	System/CPU Fan Headers (Fans 7-8: CPU Fans)
Floppy	34	Floppy Disk Drive Connector
IPMI LAN	3	IPMI Dedicated LAN (IPMI LAN is for X8DTE-F/ X8DT6-F only)
J5	32	IPMB I2C Header (for an IPMI card) (X8DTE-F/X8DT6-F)
JD1	37	PWR LED/Speaker Header (Pins 4-7: Speaker)
JF1	41	Front Panel Connector
JIBTN1	23	RAIDKey for RAID 5 SAS support (optional for X8DT6/X8DT6-F)
JL1	26	Chassis Intrusion Header
JOH1	38	Overheat LED Header
JP12C1	47	Power Supply SMBbus I2C Header
JPW1	46	24-pin ATX Main Power Connector
JPW2, JPW3	45, 44	8-pin Secondary Power Connector
JWF1	24	DOM (Disks On Module) Power Header
JWOL	29	Wake-On-LAN Header
KB/Mouse	1	PS2 Keyboard and Mouse
LAN1/2	6, 7	Gigabit Ethernet (RJ45) Ports 1/2
I-SATA0 ~ I-SATA5	22	(Intel South Bridge) SATA Ports
SAS 0-3, 4-7	31, 30	SAS Ports 0-3, 4-7 (X8DT6/X8DT6-F only)
SP1	35	Internal Speaker/Buzzer
TPM	20	TPM (Trusted Platform Module) Header
T-SGPIO-1/T-SGPIO-2	18	Serial General Purpose Input/Output Headers
USB 0/1, 2, 3	2, 21, 19	Universal Serial Bus (USB) Ports
USB 4/5, 6/7	17, 16	Universal Serial Bus (USB) Ports
VGA	5	VGA Connector

LED Indicators

LED	Item#	Description	State	Status
D1	11	BMC Heartbeat LED (X8DTE-F/X8DT6-F only)	Blinking	BMC Normal
LE1	40	Onboard Standby LED	Green	Power On
LED1	33	SAS Heartbeat LED (X8DT6/X8DT6-F only)	Blinking	SAS Normal

Memory Support

This motherboard supports up to 192 GB of Registered (RDIMM) ECC or up to 48 GB of Unbuffered (UDIMM) ECC/Non-ECC DDR3 800/1066/1333 MHz 3-channel (per CPU) memory in 12 DIMM slots.

**Note:** For memory optimization, use only DIMM modules that have been validated by Supermicro. For the latest memory updates, please refer to our website at <http://www.supermicro.com/products/motherboard>.

DIMM Installation

Insert the desired number of DIMMs into the memory slots, starting with P1-DIMM1A. For memory to work properly, follow the tables below for memory population order. Refer to the motherboard layout (at left) for the location of the DIMM slots.

Memory Population for Optimal Performance  
-For a motherboard with One CPU (CPU1) installed

	Branch 0		Branch 1		Branch 2	
3 DIMMs	P1 DIMM1A		P1 DIMM2A		P1 DIMM3A	
6 DIMMs	P1 DIMM1A	P1 DIMM1B	P1 DIMM2A	P1 DIMM2B	P1 DIMM3A	P1 DIMM3B

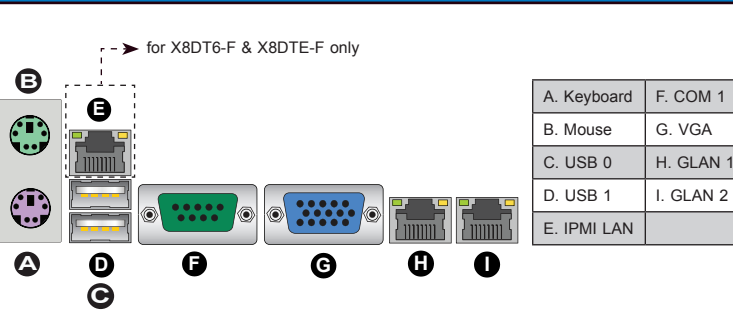
Memory Population for Optimal Performance  
-For a motherboard with One CPU (CPU2) installed

	Branch 0		Branch 1		Branch 2	
3 DIMMs	P2 DIMM1A		P2 DIMM2A		P2 DIMM3A	
6 DIMMs	P2 DIMM1A	P2 DIMM1B	P2 DIMM2A	P2 DIMM2B	P2 DIMM3A	P2 DIMM3B

Memory Population for Optimal Performance  
-For a motherboard with Two CPUs installed

	CPU1			CPU2		
	Branch 0		Branch 1	Branch 0		Branch 1
6 DIMMs	1A	2A	3A	1A	2A	3A
12 DIMMs	1A	1B	2A	2B	3A	3B

Back Panel IO Connectors



**Note:** Graphics shown in this quick guide are for illustration only. Your components may or may not look exactly the same as drawings shown in this guide.

**Note:** Refer to Chapter 2 of the User Manual on detailed information on jumpers, connectors, and LED indicators.

**Note:** Refer to Chapter 2 of the User Manual for detailed information on memory support and CPU/motherboard installation instructions.