

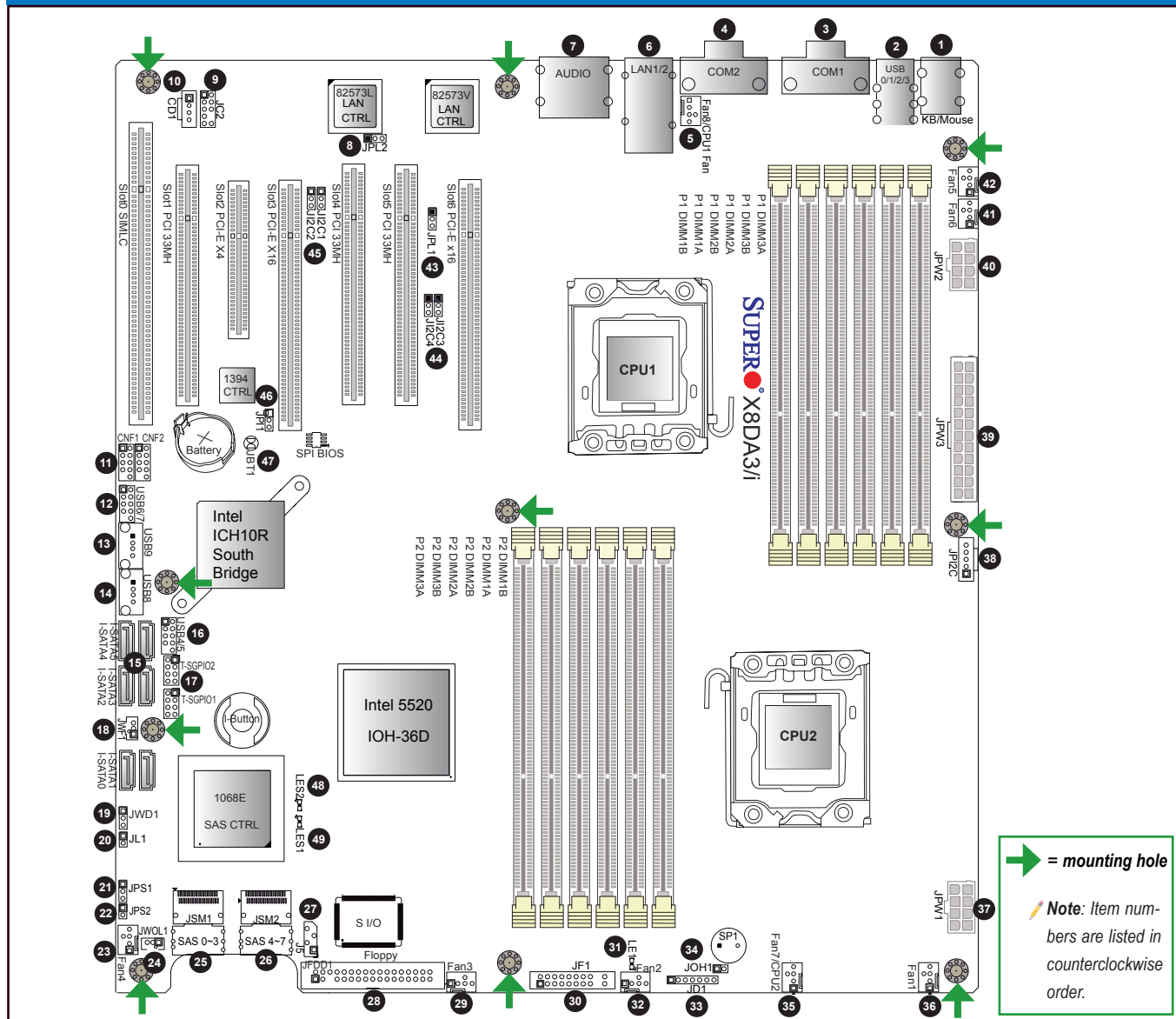
CONTACT INFORMATION

- www.supermicro.com (Email: support@supermicro.com)
- Manuals: <http://www.supermicro.com/support/manuals>
- Drivers & Utilities: <ftp://ftp.supermicro.com>
- Safety: http://www.supermicro.com/about/policies/safety_information.cfm

PACKAGE CONTENTS (Applies to single-pack only)

- One (1) Supermicro Motherboard
- One (1) Floppy Ribbon Cable
- One (1) 1394a Connector Cable
- Two (2) SAS Cables (for X8DA3)
- Four (4) Serial ATA Cables (for X8DA3)
- Six (6) Serial ATA Cables (for X8DAi)
- One (1) I/O Back Panel Shield

Motherboard Layout and Features



Jumpers, Connectors, and LED Indicators

Jumpers

Jumper	Item #	Description	Default
JBT1	47	CMOS Clear	See Chapter 2 in User Manual
Ji²C1, Ji²C2	45	SMB to PCI-Exp. Slots	Pins 2-3 (Disabled)
Ji²C3, Ji²C4	44	SMB to PCI-X Slots	Pins 2-3 (Disabled)
JPI1	46	CNF1/CNF2 (1394a_1/2) Enable	Pins 1-2 (Enabled)
JPL1/JPL2	43, 8	LAN1/2 Enable	Pins 1-2 (Enabled)
JPS1	21	SAS Enable (X8DA3)	Pins 1-2 (Enabled)
JPS2	22	SAS RAID Mode Select (X8DA3)	Closed (SR RAID Enabled)
JWD1	19	Watch Dog	Pins 1-2 (Reset)

Connectors

Connectors	Item#	Description
Audio	7	Audio Input, Output, Mic Header
CD1	10	CD-ROM Header
CNF1, CNF2	11	IEEE 1394a Connectors 1/2
COM1, COM2	3, 4	COM1/COM2 Serial Ports
FAN 1-4	36, 32, 29, 23	System Fan Headers
Fan 5-8	42, 41, 35, 5	System/CPU Fan Headers (Fans 7-8: CPU Fans)
Floppy	28	Floppy Disk Drive Connector
J5	27	SMB I²C Header
JC2	9	HD Audio Header
JD1	33	Speaker/Power LED Header
JF1	30	Front Panel Connector
JL1	20	Chassis Intrusion Header
JOH1	34	Overheat LED Header
JPi²C	38	Power Supply SMBus I²C Header
JPW1, JPW2	37, 40	+12V 8-pin Secondary PWR Connector
JPW3	39	24-pin ATX Main Power Connector
JWF1	18	Compact Flash PWR (for R 2.0 or later board)
JWOL1	24	Wake-On-LAN Header
KB/Mouse	1	PS/2 Keyboard and Mouse
LAN1/2	6	Gigabit Ethernet Ports
I-SATA0 ~ I-SATA5	15	(Intel South Bridge) SATA Ports
SAS 0 ~3, 4-7	25, 26	SAS Connectors (X8DA3 only)
T-SGPIO-1/T-SGPIO-2	17	Serial General Purpose Input/Output Headers
USB 0/1/2/3	2	(Back Panel) Universal Serial Bus (USB) Ports
USB 4/5, 6/7, 8, 9	16, 12, 14, 13	Front Panel Accessible USB Headers

LED Indicators

LED	Item#	Description	State	Status
LE1	31	Onboard Standby PWR	On	System Power On
LES1 (for X8DA3)	49	SAS Activity LED	Green: Blinking	SAS Active
LES2 (for X8DA3)	48	SAS Heartbeat LED	Yellow: Blinking	SAS Normal

Memory Support

This motherboard supports up to 192 GB of Registered (RDIMM) ECC or up to 48 GB of Unbuffered (UDIMM) ECC/Non-ECC DDR3 800/1066/1333 MHz 3-channel (per CPU) memory in 12 DIMM slots.

Note: For memory optimization, use only DIMM modules that have been validated by Supermicro. For the latest memory updates, please refer to our website at <http://www.supermicro.com/products/motherboard>.

DIMM Installation

Insert the desired number of DIMMs into the memory slots, starting with P1-DIMM1A. For memory to work properly, follow the tables below for memory population order. Refer to the motherboard layout (at left) for the location of the DIMM slots.

Memory Population for Optimal Performance -For a motherboard with One CPU (CPU1) installed

	Branch 0			Branch 1			Branch 2		
3 DIMMs	P1 DIMM1A			P1 DIMM2A			P1 DIMM3A		
6 DIMMs	P1 DIMM1A	P1 DIMM1B		P1 DIMM2A	P1 DIMM2B		P1 DIMM3A	P1 DIMM3B	

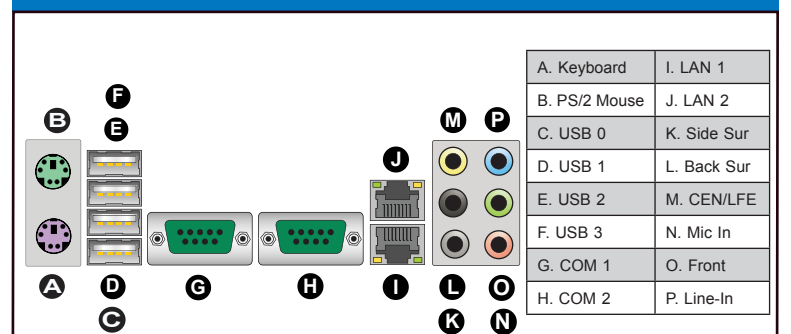
Memory Population for Optimal Performance -For a motherboard with One CPU (CPU2) installed

	Branch 0			Branch 1			Branch 2		
3 DIMMs	P2 DIMM1A			P2 DIMM2A			P2 DIMM3A		
6 DIMMs	P2 DIMM1A	P2 DIMM1B		P2 DIMM2A	P2 DIMM2B		P2 DIMM3A	P2 DIMM3B	

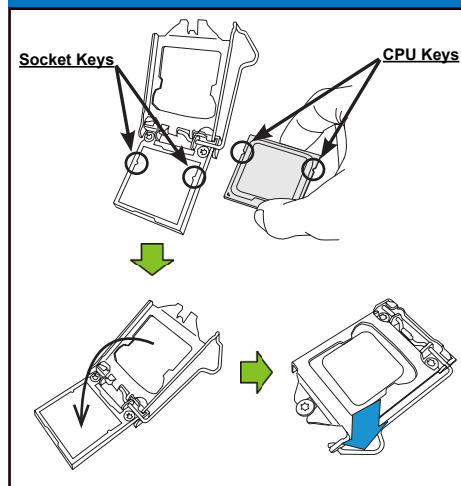
Memory Population for Optimal Performance -For a motherboard with Two CPUs installed

	CPU1						CPU2					
	Branch 0		Branch 1		Branch 2		Branch 0		Branch 1		Branch 2	
6 DIMMs	1A		2A		3A		1A		2A		3A	
12 DIMMs	1A	1B	2A	2B	3A	3B	1A	1B	2A	2B	3A	3B

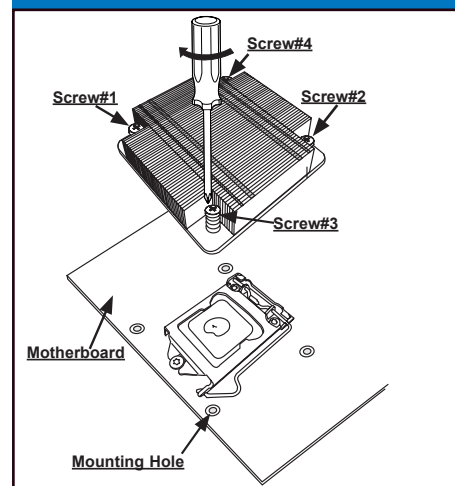
Back Panel IO Connectors



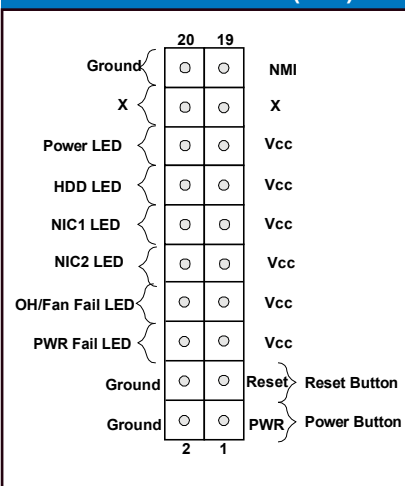
CPU Installation



Heatsink Installation



Front Panel Control (JF1)



Note: Graphics shown in this quick guide are for illustration only. Your components may or may not look exactly the same as drawings shown in this guide.

Note: Refer to Chapter 2 of the User Manual on detailed information on jumpers, connectors, and LED indicators.

Note: Refer to Chapter 2 of the User Manual for detailed information on memory support and CPU/motherboard installation instructions.