

CONTACT INFORMATION

- Website: [www.supermicro.com](http://www.supermicro.com)
- General Information: [marketing@supermicro.com](mailto:marketing@supermicro.com)
- Technical Support: [support@supermicro.com](mailto:support@supermicro.com)
- Phone: +1 (408) 503-8000, Fax: +1 (408) 503-8008

FOR YOUR SYSTEM TO WORK PROPERLY, PLEASE DOWNLOAD APPROPRIATE

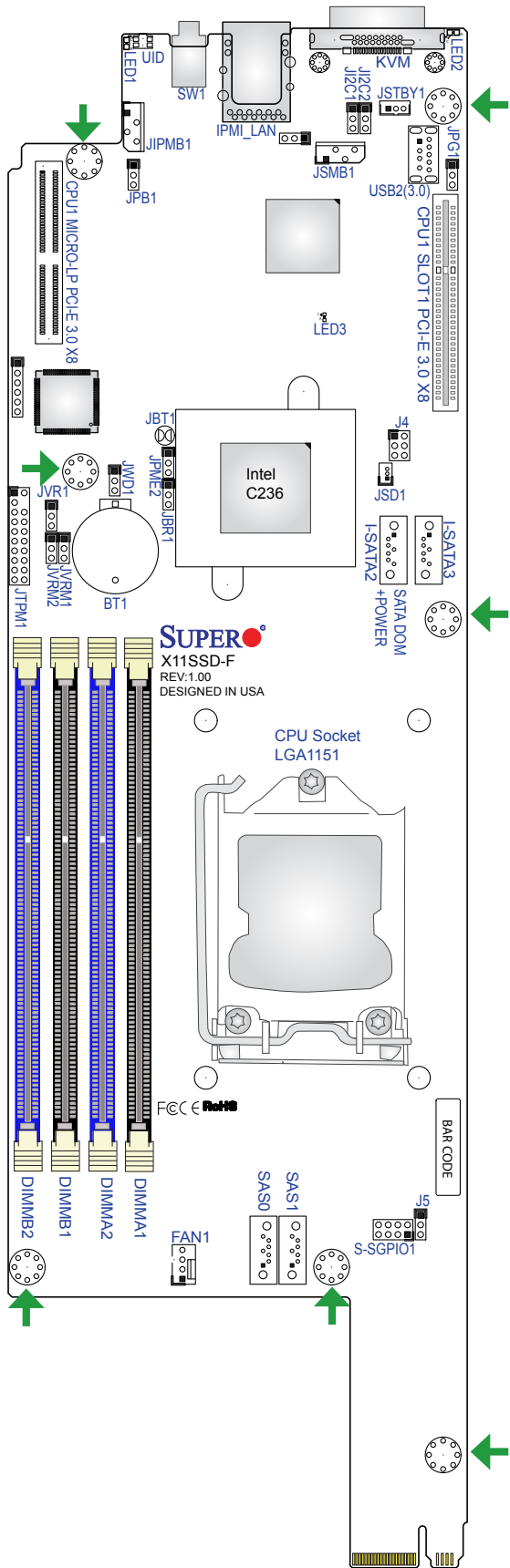
DRIVERS/IMAGES/USER'S MANUAL FROM THE LINKS BELOW:

- Manuals: <http://www.supermicro.com/support/manuals>
- Drivers & Utilities: <ftp://ftp.supermicro.com/CDR/Images/CDR-X11-UP/>
- Safety: [http://www.supermicro.com/about/policies/safety\\_information.cfm](http://www.supermicro.com/about/policies/safety_information.cfm)

PACKAGE CONTENTS

- One (1) Supermicro Motherboard
- One (1) Quick Reference Guide

Motherboard Layout and Features



**Note:** Graphics shown in this quick reference guide are for illustration only. Your components may or may not look exactly the same as drawings shown in this guide.

Connectors, Jumpers & LED Indicators

Connectors	
Connector	Description
BT1	Onboard Battery
FAN1	System Fan Header (Reserved)
I-SATA2, I-SATA3	Intel® PCH SATA 3.0 Ports (I-SATA2 with SATA DOM power)
IPMI_LAN	Dedicated IPMI LAN Port
J4	SGPIO Decoder Firmware Update
JIPMB1	System Management Bus Header for the IPMI Slot
JSD1	SATA DOM Power Connector
JSMB1	PCH SMBus Header
JSTBY1	Standby Power Header
JTPM1	Trusted Platform Module/Port 80 Connector
JVR1	SMB Programming Header (for debugging only)
KVM	Keyboard/Video/Mouse Connector
MICRO LP	CPU1 MICRO LP PCI-E 3.0 X8 Slot
SAS0	For SAS AOC (Add-on card) use
SAS1	For SAS AOC (Add-on card) use
SGPIO1	Serial Link General Purpose I/O Header
SLOT1	CPU1 SLOT1 PCI-E 3.0 X8 Slot
SW1	Power Button
UID	Unit ID Button
USB2	Front Access USB 3.0 Header

Jumpers		
Jumper	Description	Default Setting
JBR1	BIOS Recovery	Pins 1-2 (Normal)
JBT1	CMOS Clear	Open (Normal)
J12C1/ J12C2	SMB to PC-E Slots Enable/Disable	Pins 2-3 (Disabled)
JPG1	VGA Enable/Disable	Pins 1-2 (Enabled)
JPME2	ME Recovery	Pins 1-2 (Normal)
JVRM1	VRM SMB Clock (to BMC or PCH)	Pins 1-2 (BMC, Normal)
JVRM2	VRM SMB Data (to BMC or PCH)	Pins 1-2 (BMC, Normal)
JWD1	Watch Dog	Pins 1-2 (Reset)
J5	Storage Type Configuration	Pins 1-2 (BP HDD with SATA Interface) Pins 2-3 (LSI AOC for SAS0/SAS1)

LED Indicators		
LED	Description	Status
LED1	Unit ID LED	Blue Solid On: Unit Identified
LED2	Overheat/Fan Fail LED	Solid Red: Overheat, Red Blinking: PWR/Fan Fail
LED3	BMC Heartbeat LED	Green Blinking: BMC Normal

CPU Support

The X11SSD-F motherboard supports the Intel® E3-1200 V5, 6th Gen Core i3, Pentium, and Celeron processors.

**Note:** Refer to Chapter 1 of the User Manual for detailed information on jumpers, connectors, and LED indicators.

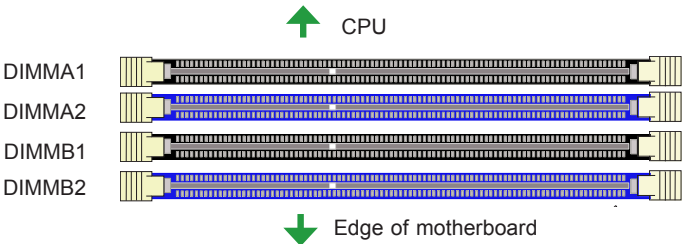
Memory Support

The X11SSD-F motherboard supports up to 64GB of DDR4 ECC VLP UDIMM memory at a speed of 2133MHz.

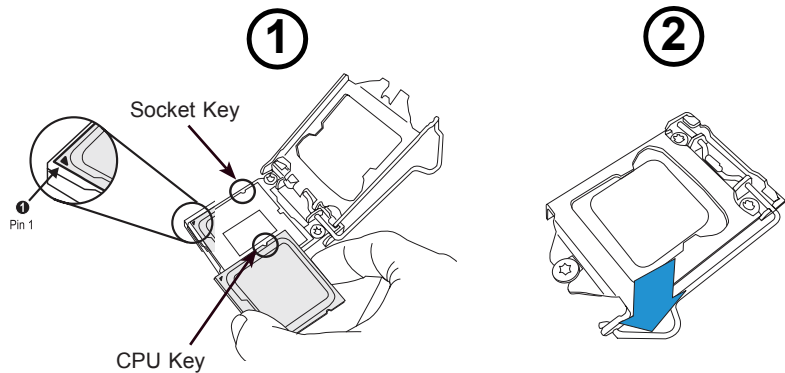
DIMM Memory Installation

When installing memory, the DIMM slots must be populated in the following order: DIMMA2, DIMMB2, then DIMMA1, DIMMB1. Always populate the blue slots first.

Recommended Population (Balanced)				
DIMMA2	DIMMB2	DIMMA1	DIMMB1	Total Memory
2GB DIMM	2GB DIMM			4GB
2GB DIMM	2GB DIMM	2GB DIMM	2GB DIMM	8GB
4GB DIMM	4GB DIMM			8GB
4GB DIMM	4GB DIMM	4GB DIMM	4GB DIMM	16GB
8GB DIMM	8GB DIMM			16GB
8GB DIMM	8GB DIMM	8GB DIMM	8GB DIMM	32GB
16GB DIMM	16GB DIMM			32GB
16GB DIMM	16GB DIMM	16GB DIMM	16GB DIMM	64GB



CPU Installation



Back Panel I/O Connectors

Rear I/O Ports	
#	Description
1.	KVM Port
2.	IPMI Port
3.	Power Butotn and LED
4.	UID Button

**Note:** Refer to Chapter 2 of the User Manual for detailed information on memory support and CPU/motherboard installation instructions.