

CONTACT INFORMATION

- Website: www.supermicro.com
- General Information: marketing@supermicro.com
- Technical Support: support@supermicro.com
- Phone: +1 (408) 503-8000, Fax: +1 (408) 503-8008

FOR YOUR SYSTEM TO WORK PROPERLY, PLEASE DOWNLOAD APPROPRIATE

DRIVERS/IMAGES/USER'S MANUAL FROM THE LINKS BELOW:

- Manuals: <http://www.supermicro.com/support/manuals>
- Drivers & Utilities: <https://www.supermicro.com/wftp/driver/>
- Safety: http://www.supermicro.com/about/policies/safety_information.cfm

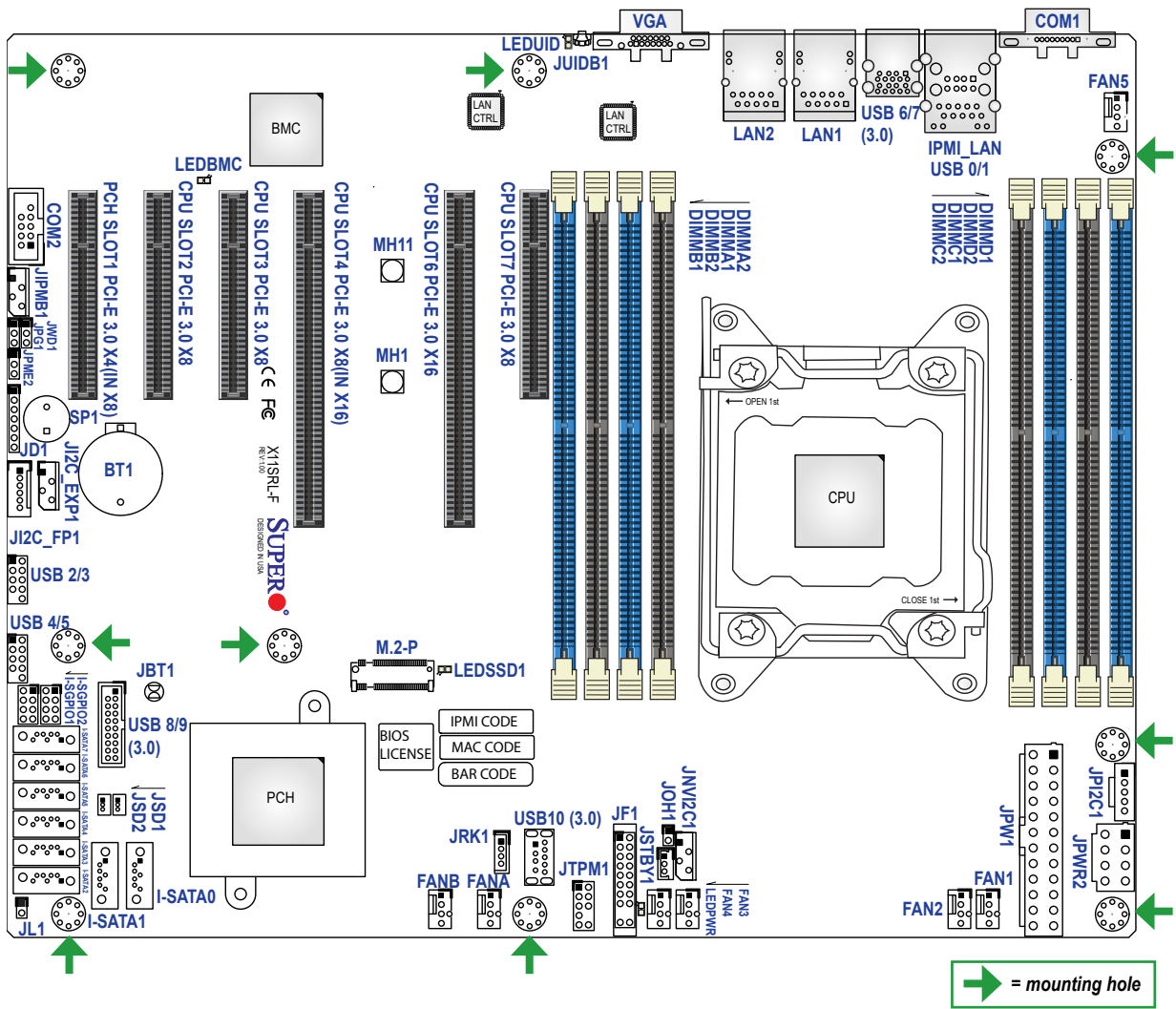
PACKAGE CONTENTS

- One (1) Supermicro Motherboard
- Six (6) SATA Cables
- One (1) I/O Shield
- One (1) Quick Reference Guide

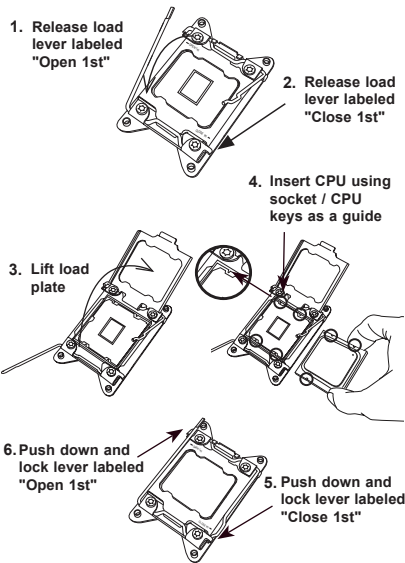


WARNING: This product can expose you to chemicals including lead, known to the State of California to cause cancer and birth defects or other reproductive harm. For more information, go to www.P65Warnings.ca.gov.

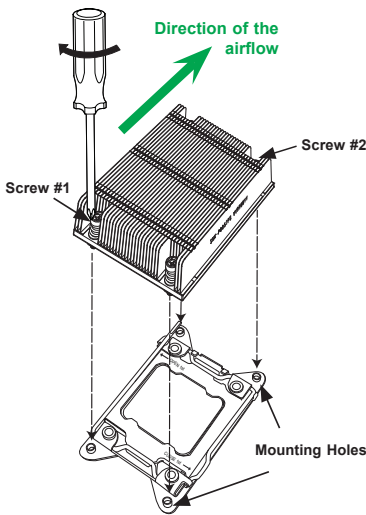
Motherboard Layout and Features



CPU Installation



Heatsink Installation



Front Control Panel (JF1)

PWR	Power Button	1	2	Ground
Reset	Reset Button			Ground
	3.3V			Power Fail LED
UID LED				OH/Fan Fail LED
3.3V LAN				NIC2 Active LED
3.3V LAN				NIC1 Active LED
UID SW				HDD LED
3.3V				PWR LED
X				X
NMI				Ground
		19	20	

Connectors and Jumpers

Connectors	
Connector	Description
BT1	Onboard Battery
COM1, COM2	COM1: Back Panel COM Port, COM2: COM Header
FAN1 ~ FAN5, FANA, FANB	CPU/System Fan Headers
IPMI_LAN	Dedicated IPMI LAN Port
I-SATA0 ~ I-SATA7	Intel® PCH SATA 3.0 Ports (with RAID 0, 1, 5, 10); I-SATA0 and I-SATA1 support SuperDOM (Disk On Module) devices
I-SGPIO1, I-SGPIO2	Serial Link General Purpose I/O Connection Headers
JD1	Speaker/Power LED Indicator Header (Pins 1-3: Power LED, Pins 4-7: Speaker)
JF1	Front Control Panel Header
J12C_EXP1	System Management Bus (SMBus) I²C for SAS3 Backplanes
J12C_FP1	System Management Bus (SMBus) I²C for LCD Devices
JIPMB1	4-pin BMC External I²C Header (for an IPMI card)
JL1	Chassis Intrusion Header
JNVI²C1	NVMe I²C Header
JOH1	Overheat/Fan Fail LED Header
JPI²C1	Power I²C System Management Bus (SMB) Header
JPW1	24-pin ATX Power Supply Connector
JPWR2	8-pin Power Connector
JRK1	Intel® RAID Key Header
JSD1, JSD2	SATA DOM Power Connectors
JSTBY1	Standby Power Header
JTPM1	Trusted Platform Module (TPM)/Port 80 Connector
JUIDB1	Unit Identifier (UID) Switch
LAN1, LAN2	1GbE LAN (RJ45) Ports
M.2-P	M.2 PCI-E 3.0 x4 Slot (Supports M-Key 2280 & 22110)
MH1, MH11	M.2 Mounting Holes
SLOT1	PCH PCI-E 3.0 x4 (in x8) Slot
SLOT2, SLOT3, SLOT7	CPU PCI-E 3.0 x8 Slots
SLOT4	CPU PCI-E 3.0 x8 (in x16) Slot
SLOT6	CPU PCI-E 3.0 x16 Slot
SP1	Onboard Buzzer
USB 0/1	Back Panel Universal Serial Bus (USB) 2.0 Ports
USB 2/3, USB 4/5	Front Accessible USB 2.0 Headers
USB 6/7	Back Panel USB 3.0 Ports
USB 8/9	Front Accessible USB 3.0 Header
USB10	USB 3.0 Type-A Header
VGA	VGA Port

Jumpers

Jumper	Description	Default Setting
JBT1	CMOS Clear	Open (Normal)
JPG1	VGA Normal/Disable	Pins 1-2 (Enabled)
JPME2	ME Manufacturing Mode	Pins 1-2 (Normal)
JWD1	Watchdog Timer	Pins 1-2 (Reset)

LED Indicators

LED Indicators		
LED	Description	Status
LEDBMC	BMC Heartbeat LED	Blinking Green: BMC Normal
LEDPWR	Onboard Power LED	Solid Green: Power On
LEDSSD1	M.2 LED	Blinking Green: Device Working
LEDUID	Unit Identifier (UID) LED	Solid Blue: Unit Identified

CPU Support

The X11SRL-F motherboard supports an Intel® Xeon® W-2200/2100 (Socket R4) processor with up to 18 cores and a thermal design power (TDP) of up to 165W.

Memory Support

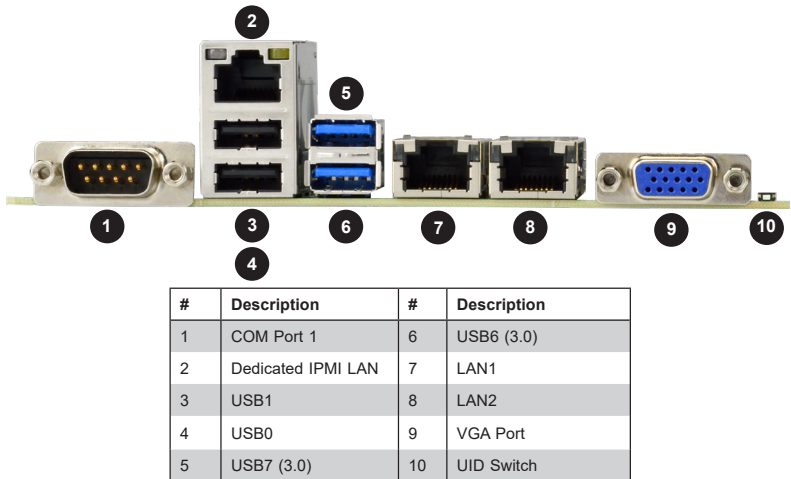
The X11SRL-F supports up to 512GB of RDIMM and 1TB of LRDIMM DDR4 (288-pin) ECC memory with speeds of up to 2933 MHz in eight memory slots. See below for additional memory information.

- Always use DDR4 memory of the same type, size, and speed. Mixed DIMM speeds can be installed. However, all DIMMs will run at the speed of the slowest DIMM.
- The motherboard will support odd-numbered modules (1, 3, 5, or 7 modules installed). However, to achieve the best memory performance, a balanced memory population is recommended.
- 16Gb density DRAM module is supported by Intel Xeon W-2200 series processors.
- DDR4-2933MHz memory speed support is available with selected Intel Xeon W-2200 series processors.

1 CPU, 8-DIMM Slots

Number of DIMMs	Memory Population Sequence
1	DIMMA1
2	DIMMA1 / DIMMB1
3	DIMMA1 / DIMMB1 / DIMMC1
(Unbalanced: not recommended)	
4	DIMMA1 / DIMMB1 / DIMMC1 / DIMMD1
5	DIMMA1 / DIMMB1 / DIMMC1 / DIMMD1 / DIMMA2
(Unbalanced: not recommended)	
6	DIMMA1 / DIMMB1 / DIMMC1 / DIMMD1 / DIMMA2 / DIMMB2
7	DIMMA1 / DIMMB1 / DIMMC1 / DIMMD1 / DIMMA2 / DIMMB2 / DIMMC2
(Unbalanced: not recommended)	
8	DIMMA1 / DIMMB1 / DIMMC1 / DIMMD1 / DIMMA2 / DIMMB2 / DIMMC2 / DIMMD2

Back Panel I/O Connectors



#	Description	#	Description
1	COM Port 1	6	USB6 (3.0)
2	Dedicated IPMI LAN	7	LAN1
3	USB1	8	LAN2
4	USB0	9	VGA Port
5	USB7 (3.0)	10	UID Switch

Note: Graphics shown in this quick reference guide are for illustration only. Your components may or may not look exactly the same as drawings shown in this guide.

Note: Refer to Chapter 1 of the User Manual for detailed information on jumpers, connectors, and LED indicators.

Note: Refer to Chapter 2 of the User Manual for detailed information on memory support and CPU/motherboard installation instructions.