

CONTACT INFORMATION

- Website: www.supermicro.com
- General Information: marketing@supermicro.com
- Technical Support: support@supermicro.com
- Phone: +1 (408) 503-8000, Fax: +1 (408) 503-8008

FOR YOUR SYSTEM TO WORK PROPERLY, PLEASE DOWNLOAD APPROPRIATE

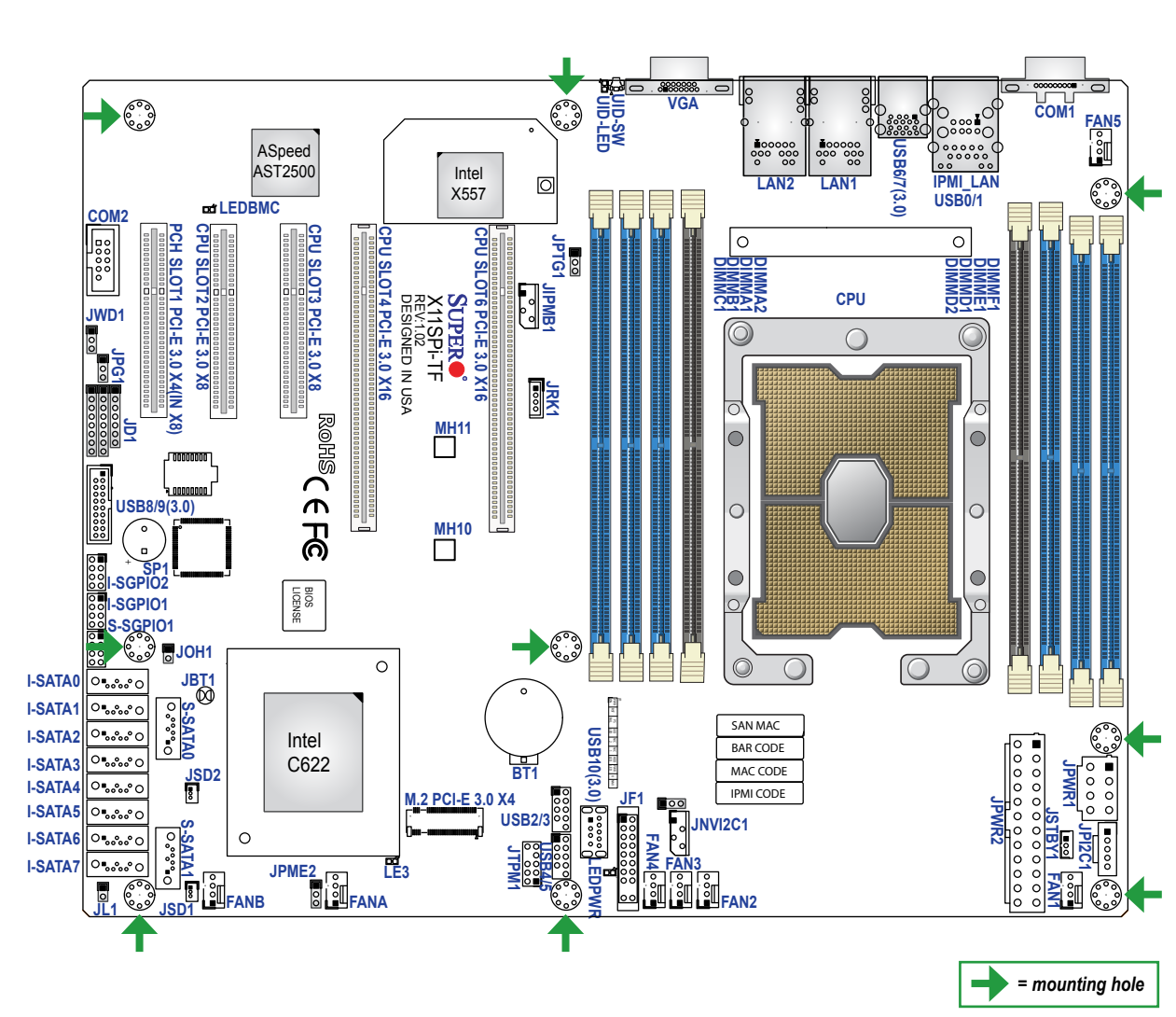
- DRIVERS/IMAGES/USER'S MANUAL FROM THE LINKS BELOW:
- Manuals: <http://www.supermicro.com/support/manuals>
 - Drivers & Utilities: <https://www.supermicro.com/wftp/driver>
 - Safety: http://www.supermicro.com/about/policies/safety_information.cfm

PACKAGE CONTENTS

- One (1) Supermicro Motherboard
- Six (6) SATA Cables
- One (1) I/O Shield
- One (1) Quick Reference Guide



Motherboard Layout and Features



Connectors and LED Indicators

Connector	Description
BT1	Onboard Battery
COM1, COM2	COM Port, COM Header
FAN1 ~ FAN5, FANA, FANB	CPU/System Fan Headers
IPMI_LAN	Dedicated IPMI LAN Port
I-SATA0 ~ I-SATA7	Intel® PCH SATA 3.0 Ports (with RAID 0, 1, 5, 10)
I-SGPIO1, I-SGPIO2, S-SGPIO1	Serial Link General Purpose I/O Connection Headers (I-SGPIO: SATA use; S-SGPIO: sSATA use)
JD1	Speaker/Power LED Indicator (Pins 1-3: Power LED, Pins 4-7: Speaker)
JF1	Front Control Panel Header
JIPMB1	4-pin BMC External I²C Header (for an IPMI card)
JL1	Chassis Intrusion Header
JNVI²C1	NVMe I²C Header
JOH1	Overheat LED Indicator
JPI²C1	Power System Management Bus (SMB) I²C Header
JPWR1	8-pin Power Connector
JPWR2	24-pin ATX Power Connector
JRK1	Intel RAID Key Header
JSD1, JSD2	SATA DOM Power Connectors
JSTBY1	Standby Power Header
JTPM1	Trusted Platform Module/Port 80 Connector
LAN1, LAN2	LAN (RJ45) Ports
M.2	M.2 PCI-E 3.0 x4 Slot (Supports M-Key 2280 and 22110)
MH10, MH11	M.2 Mounting Holes
SLOT1	PCH PCI-E 3.0 x4 (in x8) Slot
SLOT2	CPU PCI-E 3.0 x8 Slot
SLOT3, SLOT4	CPU PCI-E 3.0 x8/x16 Slot (Supports Auto Switch)
SLOT6	CPU PCI-E 3.0 x16 Slot
SP1	Internal Speaker/Buzzer
S-SATA0, S-SATA1	SATA 3.0 Ports with SATA DOM Power
UID-SW	Unit Identifier (UID) Switch
USB0/1	Back Panel Universal Serial Bus (USB) 2.0 Ports
USB2/3, USB4/5	Front Accessible USB 2.0 Headers
USB6/7	Back Panel USB 3.0 Ports
USB8/9	Front Accessible USB 3.0 Header
USB10	USB 3.0 Type-A Header
VGA	VGA Port

LED	Description	Status
LE3	M.2 LED	Blinking Green: Device Working
LEDBMC	BMC Heartbeat LED	Blinking Green: BMC Normal
LEDPWR	Onboard Power LED	Solid Green: Power On
UID-LED	Unit Identifier (UID) LED	Solid Blue: Unit Identified

Jumpers

Jumper	Description	Default Setting
JBT1	CMOS Clear	Open (Normal)
JPG1	VGA Enable/Disable	Pins 1-2 (Enabled)
JPME2	ME Manufacturing Mode	Pins 1-2 (Normal)
JPTG1	LAN Enable/Disable	Pins 1-2 (Enabled)
JWD1	Watchdog Timer	Pins 1-2 (Reset)

CPU Support

The X11SPi-TF motherboard supports the Intel® Xeon 81xx/61xx/51xx/41xx/31xx and 82xx/62xx/52xx/42xx/32xx series (Socket P0-LGA3647) processors with up to 28 cores and a thermal design power (TDP) of up to 205W.

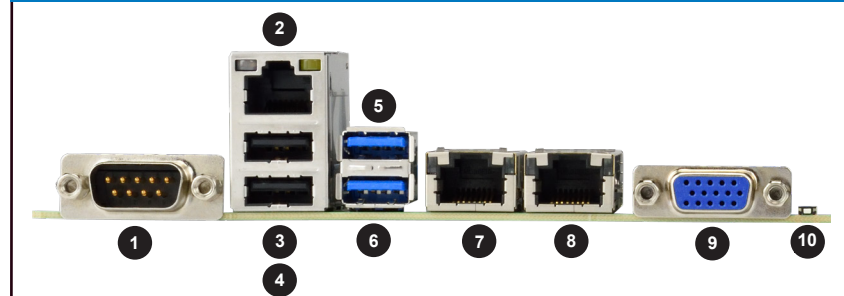
Memory Support

The X11SPi-TF supports up to 512GB of RDIMM, 1TB of LRDIMM, and 2TB of 3DS LRDIMM DDR4 (288-pin) ECC memory with speeds of up to 2933MHz in eight memory slots. See below for additional memory information.

- The blue slots must be populated first. Only populate DIMMA2 and DIMMD2 if the extra memory support is needed.
- Always use DDR4 memory of the same type, size and speed. Mixed DIMM speeds can be installed. However, all DIMMs will run at the speed of the slowest DIMM.
- The motherboard will support odd-numbered modules (one or three modules installed). However, to achieve the best memory performance, a balanced memory population is recommended.
- Memory capacity and frequency is CPU dependent.
- 2933MHz memory is supported by the 82xx/62xx series processors.

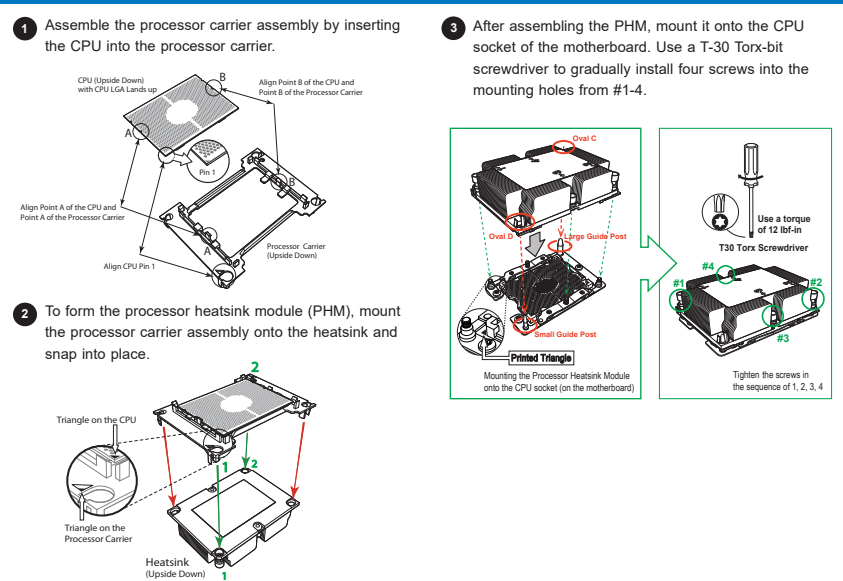
1 CPU, 8-DIMM Slots	
Number of DIMMs	Memory Population Sequence
1	DIMMA1
2	DIMMA1 / DIMMD1
3	DIMMC1 / DIMMB1 / DIMMA1
4	DIMMB1 / DIMMA1 / DIMMD1 / DIMME1
5	DIMMC1 / DIMMB1 / DIMMA1 / DIMMD1 / DIMME1
6	DIMMC1 / DIMMB1 / DIMMA1 / DIMMD1 / DIMME1 / DIMMF1
7	DIMMC1 / DIMMB1 / DIMMA1 / DIMMA2 / DIMMD1 / DIMME1 / DIMMF1
8	DIMMC1 / DIMMB1 / DIMMA1 / DIMMA2 / DIMMD2 / DIMMD1 / DIMME1 / DIMMF1

Back Panel I/O Connectors



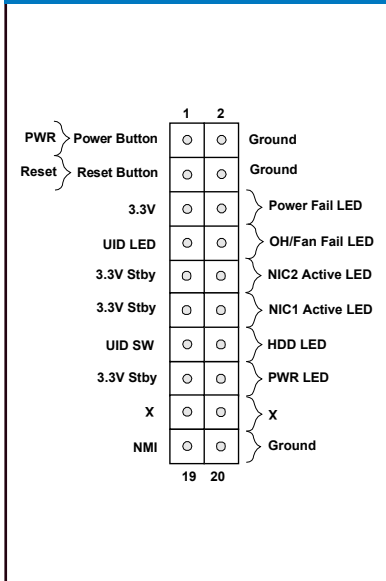
#	Description	#	Description
1	COM Port 1	6	USB6 (3.0)
2	Dedicated IPMI LAN	7	LAN1
3	USB1	8	LAN2
4	USB0	9	VGA Port
5	USB7 (3.0)	10	UID Switch

CPU and PHM Installation



Note: Graphics shown in this quick reference guide are for illustration only. Your components may or may not look exactly the same as drawings shown in this guide.

Front Control Panel (JF1)



Note: Refer to Chapter 1 of the User Manual for detailed information on jumpers, connectors, and LED indicators.

Note: Refer to Chapter 2 of the User Manual for detailed information on memory support and CPU/motherboard installation instructions.