

CONTACT INFORMATION

- Website: www.supermicro.com
- General Information: marketing@supermicro.com
- Technical Support: support@supermicro.com
- Phone: +1 (408) 503-8000, Fax: +1 (408) 503-8008

FOR YOUR SYSTEM TO WORK PROPERLY, PLEASE DOWNLOAD APPROPRIATE

DRIVERS/IMAGES/USER'S MANUAL FROM THE LINKS BELOW:

- Manuals: <http://www.supermicro.com/support/manuals>
- Drivers & Utilities: <https://www.supermicro.com/wftp/driver>
- Safety: http://www.supermicro.com/about/policies/safety_information.cfm

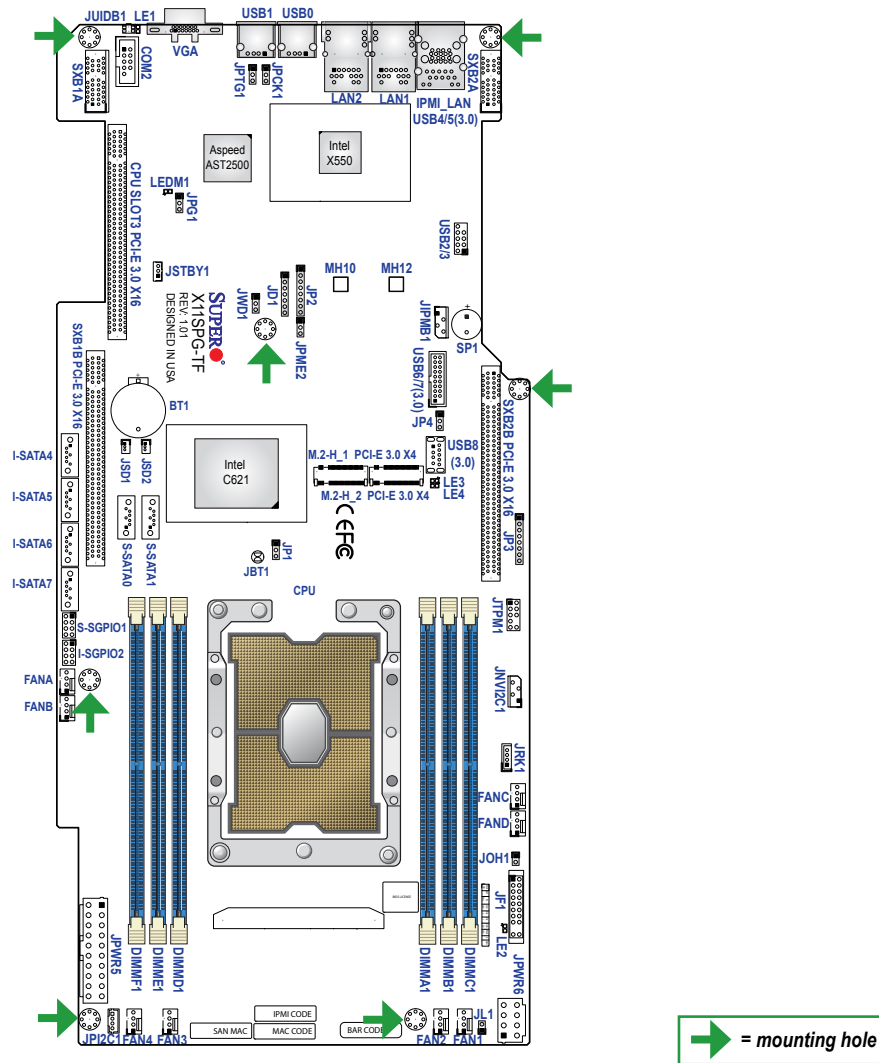
PACKAGE CONTENTS

- One (1) Supermicro Motherboard
- Six (6) SATA Cables
- One (1) Quick Reference Guide



WARNING: This product can expose you to chemicals including lead, known to the State of California to cause cancer and birth defects or other reproductive harm. For more information, go to www.P65Warnings.ca.gov.

Motherboard Layout and Features



Connectors and LED Indicators

Connectors	
Connector	Description
BT1	Onboard Battery
COM2	COM Header
FAN1 ~ FAN4	CPU/System Fan Headers
FANA ~ FAND	GPU Fan Headers
IPMI_LAN	Dedicated IPMI LAN Port
I-SATA4 ~ I-SATA7	Intel® PCH SATA 3.0 Ports (with RAID 0, 1, 5, 10)
I-SGPIO2, S-SGPIO1	Serial Link General Purpose I/O Connection Headers (I-SGPIO: SATA use; S-SGPIO: sSATA use)
JD1	Speaker/Power LED Indicator (Pins 1-3: Power LED, Pins 4-7: Speaker)
JF1	Front Control Panel Header
JIPMB1	4-pin BMC External I°C Header (for an IPMI card)
JL1	Chassis Intrusion Header
JNVfC1	NVMe I°C Header
JOH1	Overheat LED Indicator
JPfC1	Power I°C System Management Bus (SMB) Header
JPWR5	20-pin ATX Power Connector
JPWR6	8-pin Power Connector for GPU
JRK1	Intel RAID Key Header
JSD1, JSD2	SATA DOM Power Connectors
JSTBY1	Standby Power Header
JTPM1	Trusted Platform Module (TPM)/Port 80 Connector
JUIDB1	Unit Identifier (UID) Switch
LAN1, LAN2	10GbE LAN Ports
M.2-H_1, M.2-H_2	Dual M.2 PCI-E 3.0 x4 or SATA 3.0 Slots (Supports M-Key 2280)
MH10, MH12	M.2 Mounting Holes
SLOT3	Middle CPU PCI-E 3.0 x16 Slot
SP1	Internal Speaker/Buzzer
S-SATA0, S-SATA1	SATA 3.0 Ports with SATA DOM Power
SXB1A, SXB1B	Left PCI-E 3.0 x16 GPU Slot
SXB2A, SXB2B	Right PCI-E 3.0 x16 GPU Slot
USB0, USB1	Back Panel Universal Serial Bus (USB) 2.0 Ports
USB2/3	Front Accessible USB 2.0 Header
USB4/5	Back Panel USB 3.0 Ports
USB6/7	Front Accessible USB 3.0 Header
USB8	USB 3.0 Type-A Header
VGA	VGA Port

LED Indicators		
LED	Description	Status
LE1	Unit Identifier (UID) LED	Solid Blue: Unit Identified
LE2	Onboard Power LED	Solid Green: Power On
LE3, LE4	M.2 LED	Blinking Green: Device Working
LEDM1	BMC Heartbeat LED	Blinking Green: BMC Normal

Jumpers

Jumpers		
Jumper	Description	Default
JBT1	CMOS Clear	Open (Normal)
JPG1	VGA Enable/Disable	Pins 1-2 (Enabled)
JPME2	ME Manufacturing Mode	Pins 1-2 (Normal)
JPTG1	LAN Enable/Disable	Pins 1-2 (Enabled)
JWD1	Watchdog Timer	Pins 1-2 (Reset)

CPU Support

The X11SPG-TF supports the Intel® Xeon 81xx/61xx/51xx/41xx/31xx and 82xx/62xx/52xx/42xx/32xx series (Socket P0-LGA3647) processors with a thermal design power (TDP) of up to 205W and 28 cores.

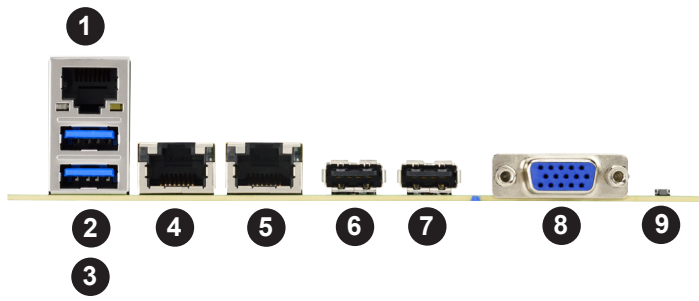
Memory Support

The X11SPG-TF supports up to 384GB of RDIMM, 768GB of LRDIMM, and 1.5TB of 3DS LRDIMM DDR4 (288-pin) ECC memory with speeds of up to 2933MHz in six memory slots. See below for additional memory information.

- Always use DDR4 memory of the same type, size and speed. Mixed DIMM speeds can be installed. However, all DIMMs will run at the speed of the slowest DIMM.
- The motherboard will support odd-numbered modules (one or three modules installed). However, to achieve the best memory performance, a balanced memory population is recommended.
- Memory capacity and frequency is CPU dependent.
- 2933MHz memory is supported by the 82xx/62xx series processors.

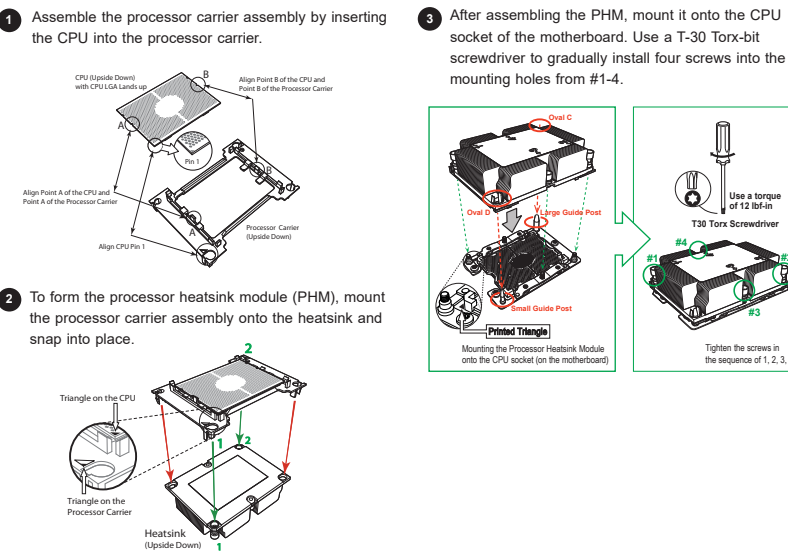
1 CPU, 6-DIMM Slots	
Number of DIMMs	Memory Population Sequence
1	DIMMA1
2	DIMMA1 / DIMMD1
3	DIMMC1 / DIMMB1 / DIMMA1
4	DIMMB1 / DIMMA1 / DIMMD1 / DIMME1
5	DIMMC1 / DIMMB1 / DIMMA1 / DIMMD1 / DIMME1
(Unbalanced: Not Recommended)	DIMMC1 / DIMMB1 / DIMMA1 / DIMMD1 / DIMME1
6	DIMMC1 / DIMMB1 / DIMMA1 / DIMMD1 / DIMME1 / DIMMF1

Back Panel I/O Connectors



#	Description	#	Description	#	Description
1	Dedicated IPMI LAN	4	LAN1	7	USB1
2	USB5 (3.0)	5	LAN2	8	VGA Port
3	USB4 (3.0)	6	USB0	9	UID Switch

CPU and PHM Installation



Note: Graphics shown in this quick reference guide are for illustration only. Your components may or may not look exactly the same as drawings shown in this guide.

Front Control Panel (JF1)

PWR	Power Button	1	2	Ground
Reset	Reset Button	3	4	Ground
3.3V		5	6	Power Fail LED
UID LED		7	8	OH/Fan Fail LED
3.3V Stby		9	10	NIC2 Active LED
3.3V Stby		11	12	NIC1 Active LED
3.3V Stby		13	14	HDD LED
3.3V		15	16	PWR LED
X		17	18	X
NMI		19	20	Ground

Note: Refer to Chapter 1 of the User Manual for detailed information on jumpers, connectors, and LED indicators.

Note: Refer to Chapter 2 of the User Manual for detailed information on memory support and CPU/motherboard installation instructions.