

CONTACT INFORMATION

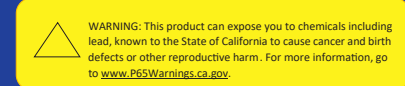
- Website: www.supermicro.com
- General Information: marketing@supermicro.com
- Technical Support: support@supermicro.com
- Phone: +1 (408) 503-8000, Fax: +1 (408) 503-8008

FOR YOUR SYSTEM TO WORK PROPERLY, PLEASE DOWNLOAD APPROPRIATE

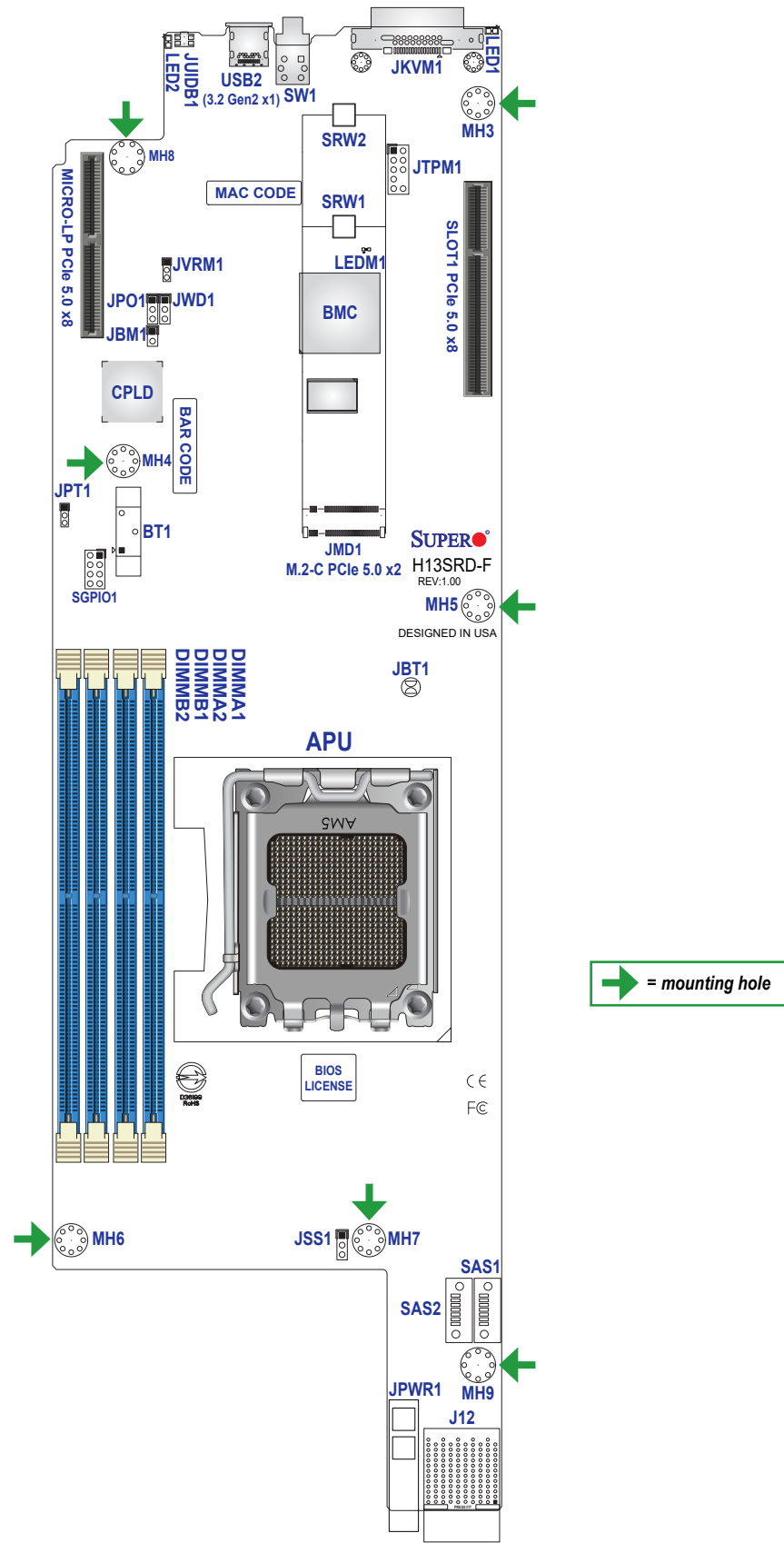
- DRIVERS /IMAGES/USER'S MANUAL FROM THE LINKS BELOW:**
- Manuals: <http://www.supermicro.com/support/manuals>
 - Drivers & Utilities: <https://www.supermicro.com/wdl/driver/>
 - Safety: http://www.supermicro.com/about/policies/safety_information.cfm

PACKAGE CONTENTS

- One Supermicro Motherboard
- One Quick Reference Guide



Motherboard Layout and Features



→ = mounting hole

Note: Graphics shown in this quick reference guide are for illustrative purposes only. Your components may or may not look exactly the same as drawings shown in this guide.

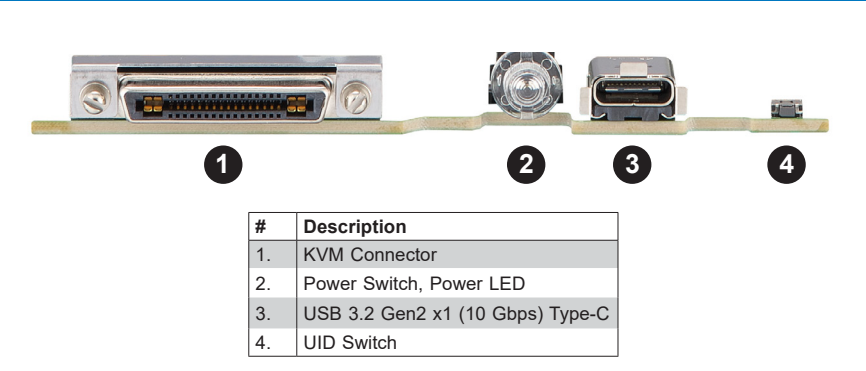
Jumpers, Connectors, and LED Indicators

Jumpers		
Jumper	Description	Default Settings
JSS1	AOC SAS Enable/Disable	Pins 1-2: Disabled
JBM1	Disable IPMI Share LAN	Pins 1-2 Open: Enabled
JPO1	CPU Throttle when PWR_FAIL	Pins 2-3: Disabled
JPT1	Onboard TPM 2.0 Enable/Disable	Pins 1-2: Enabled
JWD1	Watch Dog Timer	Pins 1-2: Reset (Default) Pins 2-3: NMI

Connectors	
Connector	Description
BT1	Onboard Battery
JPWR1	12 V Input Power Connector
JKVM1	KVM Connector for USB0/1, COM1, VGA
JTPM1	Trusted Platform Module/Port 80 Connector
JUIDB1	UID Switch
SAS1, SAS2	AOC SATA/SAS Input Connector (Link to AOC SAS Card)
S-SGPIO1	Serial Link General Purpose I/O Header
SW1	Power Switch, Power LED
USB0/1	Two USB 2.0 Ports via JKVM1
USB2	USB 3.2 Gen2 x1 (10 Gbps) Type-C Connector
JMD1	M.2 M-Key 2280/22110 Slot (PCIe 5.0 x2)
J9	Micro Low-Profile PCIe 5.0 x8 Slot with two USB 2.0 connections
J10	PCIe 5.0 x8 Slot (Open-End support up to 75 W)
J12	MicroCloud Backplane Connector for 2x PCIe 5.0 x4 / Dedicated IPMI LAN / 2x AOC SATA/SAS

LED Indicators		
LED	Description	Status
LED1	OH/Power Fail/FAN Fail	Blinking Red: Power Fail or FAN Fail Solid Red: Overheat
LED2	Unit Identifier LED	Solid Blue: Unit Identified
LEDM1	BMC Heartbeat LED	Blinking Green: BMC Normal

Rear I/O Panel Connectors



Note: Refer to Chapter 2 of the User Manual for detailed information on jumpers, connectors, and LED indicators.

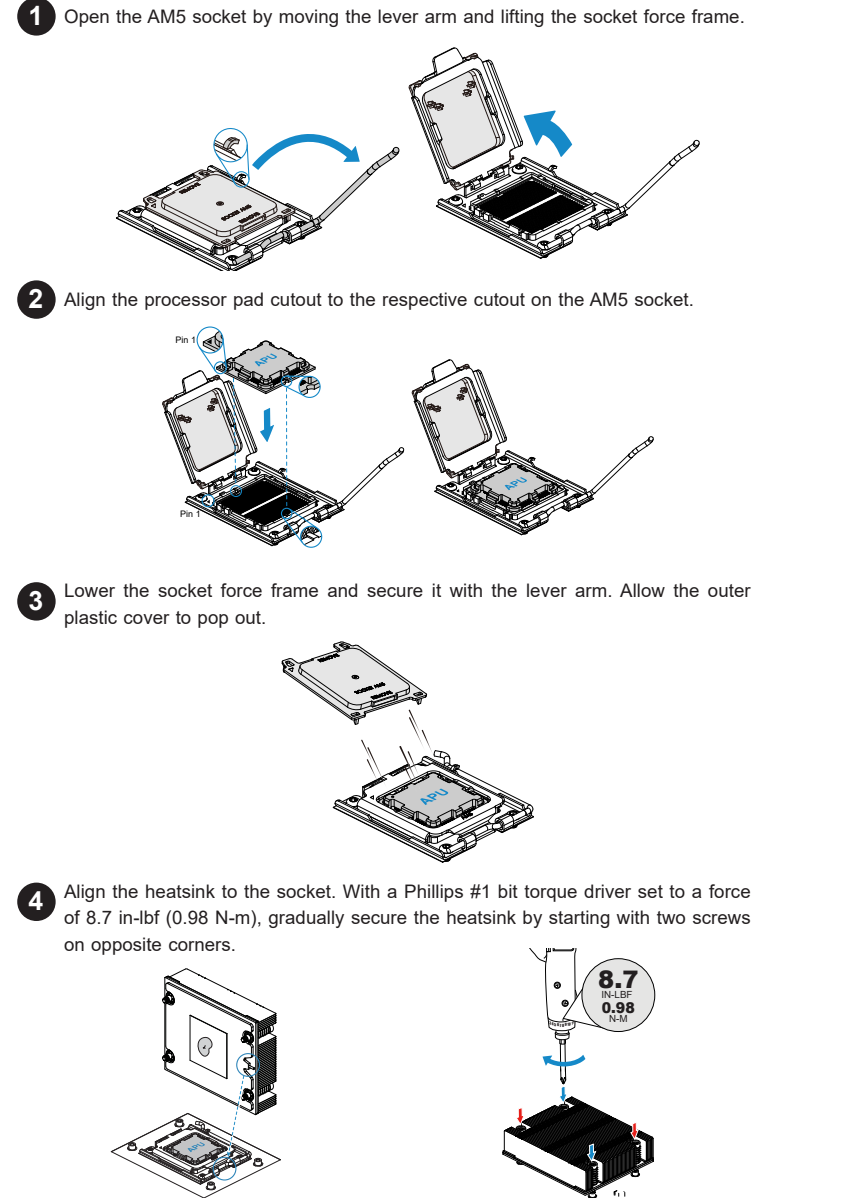
Memory and Processor Support

Memory Support
 The H13SRD-F supports up to 192 GB of ECC and Non-ECC DDR5 UDIMM memory with speeds of up to 5200 MT/s in two DIMM slots or 3600 MT/s in four DIMM slots.

Channel	DIMM Slot	DIMM Configuration and Maximum Memory Speed (MT/s)					
		1	2	3	4	5	6
Channel A	DIMMA1					Up to 3600 MT/s	Up to 3600 MT/s
	DIMMA2	Up to 5600 MT/s		Up to 5600 MT/s		Up to 3600 MT/s	Up to 3600 MT/s
Channel B	DIMMB1				Up to 3600 MT/s		Up to 3600 MT/s
	DIMMB2		Up to 5600 MT/s	Up to 5600 MT/s	Up to 3600 MT/s		Up to 3600 MT/s

Processor Installation

The H13SRD-F motherboard supports an AMD EPYC™ 4005, 4004 and AMD Ryzen™ 7000 processor with a TDP of up to 170 W in an AM5 socket.



Note: Refer to Chapter 2 of the User Manual for detailed information on memory support and processor/motherboard installation instructions.