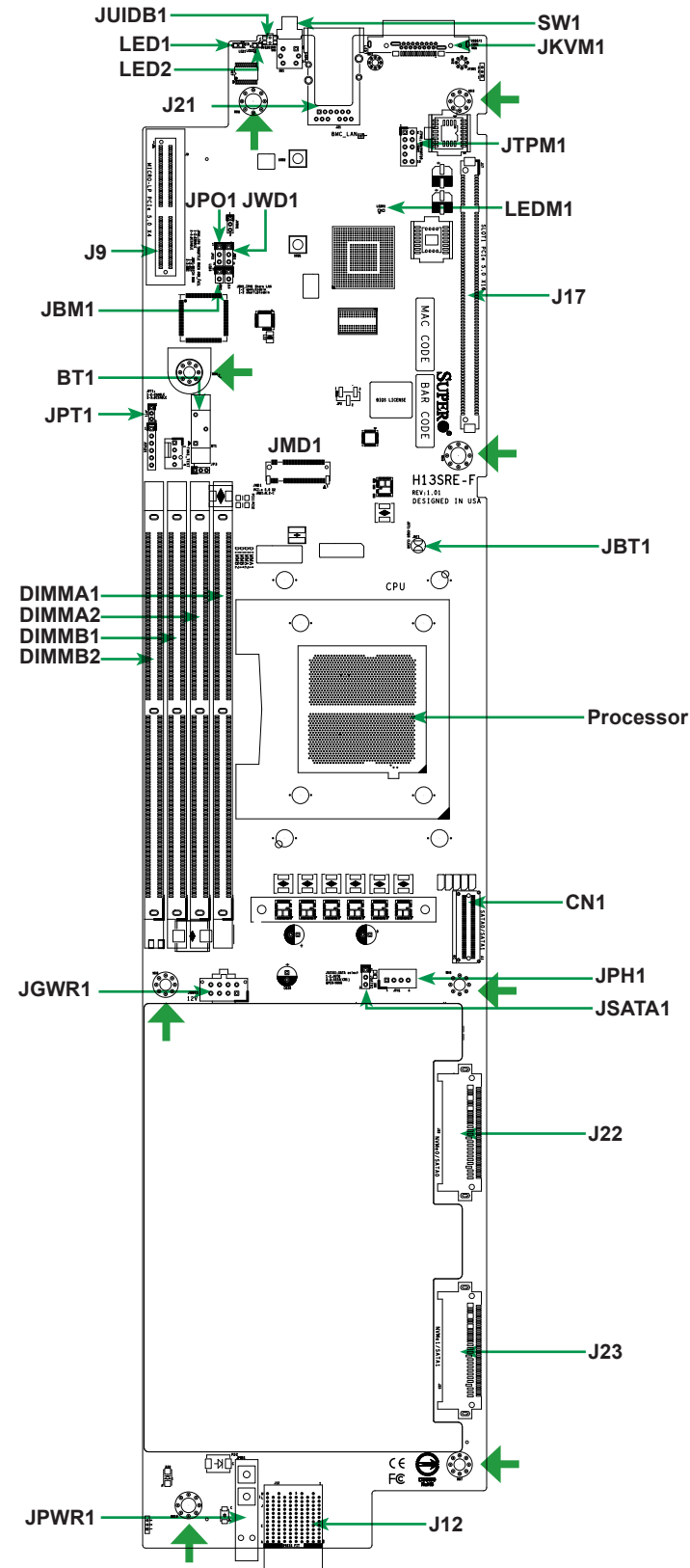


**Motherboard Layout and Features**



**Note:** Graphics shown are for illustrative purposes only. Your components may or may not look exactly the same as drawings shown in this guide.

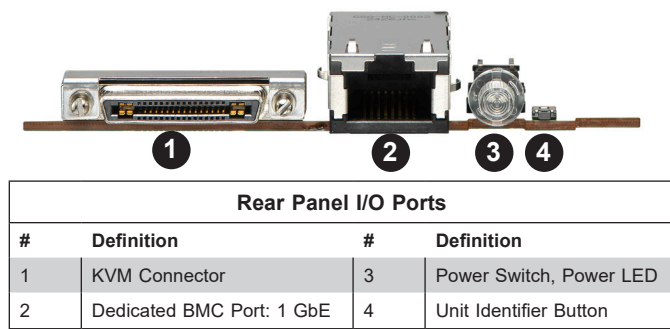
**Jumpers, Connectors, and LED Indicators**

Jumpers		
Jumper	Description	Default Setting
JBM1	Disable IPMI Share LAN	Pins 1-2 Open: Enabled
JBT1	CMOS Clear	Open
JPO1	CPU Throttle when PWR_FAIL	Pins 2-3: Disabled
JPT1	Onboard TPM 2.0 Enable/Disable	Pins 1-2: Enabled
JSATA1	SATA Select	Pins 1-2: Auto
JWD1	Watch Dog Timer	Pins 1-2: Reset

Connectors	
Connector	Description
BT1	Onboard Battery
CN1	SATA Cable Connector for SATA0/SATA1
DIMMA1-DIMMB2	DIMM (Memory) Slots
J9	Micro Low-Profile PCIe 5.0 x4 Slot with two USB 2.0 Connectors
J12	MicroCloud Backplane Connector
J17	PCIe 5.0 x16 Slot (supports up to 75 W)
J21	Dedicated BMC LAN Port
J22	NVMe0/SATA0 Connectors (SATA shared with CN1)
J23	NVMe1/SATA1 Connectors (SATA shared with CN1)
JGWR1	12 V Output Power Connector for GPU
JKVM1	KVM Connector for USB0/1, COM1, VGA
JMD1	M.2 M-Key 2280/22110 Slot (PCIe 5.0 x2)
JPH1	SATA Power Cable Connector
JPWR1	12 V Input Power Connector
JTPM1	Port 80 Connector
JUIDB1	UID Switch
SW1	Power Switch, Power LED

LED Indicators		
LED	Description	Status
LED1	Unit Identifier LED	Solid Blue: Unit Identified
LED2	OH/Power Fail/FAN Fail	Blinking Red: Power Fail or Fan Fail Solid Red: Overheat
LEDM1	BMC Heartbeat LED	Blinking Green: BMC Normal

**Rear I/O Panel Connections**



**Note:** Refer to Chapter 1 of the User Manual for detailed information on jumpers, connectors, and LED indicators.

**Memory and Processor Support**

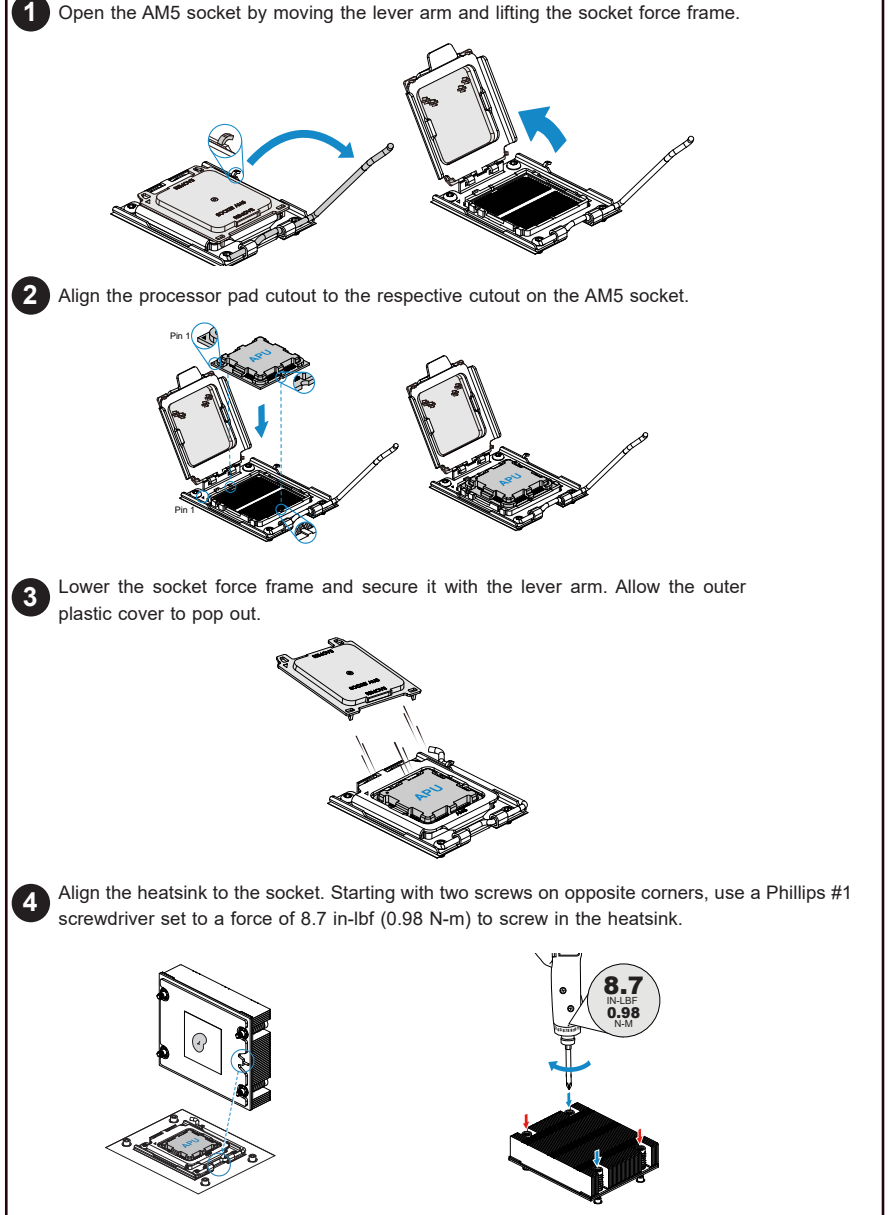
**Memory Support**

The H13SRE-F supports up to 192 GB of ECC and Non-ECC DDR5 UDIMM memory with speeds of 5600 MT/s in two DIMM slots or 3600 MT/s in four DIMM slots.

Four DIMM Slots							
Channel	DIMM Slot	DIMM Configuration and Maximum Memory Speed (MT/s)					
		1	2	3	4	5	6
Channel A	DIMMA1					Up to 3600 MT/s	Up to 3600 MT/s
	DIMMA2	Up to 5200 MT/s		Up to 5200 MT/s		Up to 3600 MT/s	Up to 3600 MT/s
Channel B	DIMMB1				Up to 3600 MT/s		Up to 3600 MT/s
	DIMMB2		Up to 5200 MT/s	Up to 5200 MT/s	Up to 3600 MT/s		Up to 3600 MT/s

**Processor Installation**

The H13SRE-F supports AMD EPYC™ 4005, 4004, and AMD Ryzen™ 7000 processors with a TDP of up to 170 W TDP in an AM5 socket.



**Note:** Refer to Chapter 2 of the User Manual for detailed information on memory support and CPU/motherboard installation instructions.