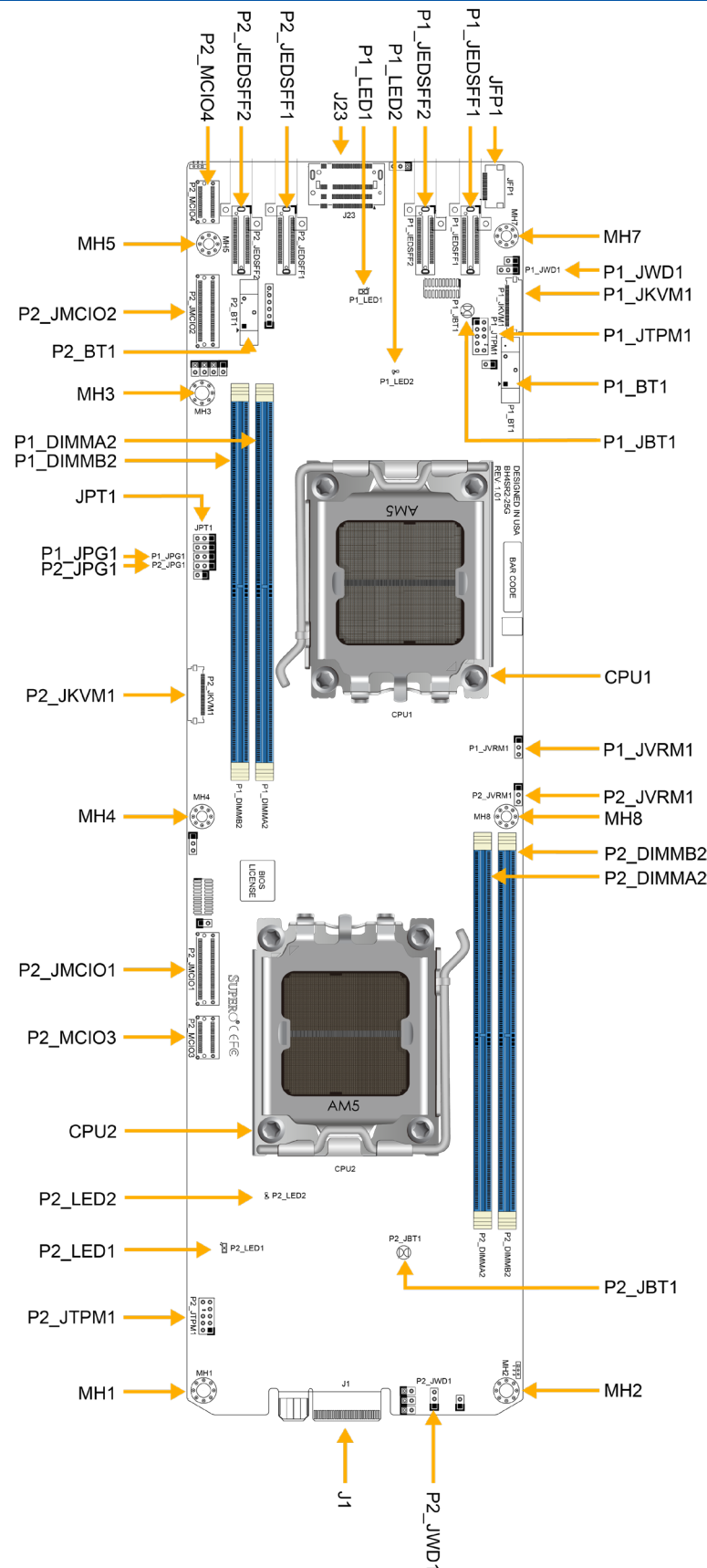


Motherboard Layout and Features



Jumpers, Connectors, and LED Indicators

Jumpers		
Jumper	Description	Default Setting
P1_JBT1, P2_JBT1	CMOS Clear	Open (Normal)
P1_JPG1, P2_JPG1	VGA Enable/Disable	Pins 1-2 (Enabled)
P1_JWD1, P2_JWD1	Watchdog Timer	Pins 1-2 (Reset)
JPT1	Onboard TPM 2.0 Enable/Disable	Pins 1-2 (Enabled)

Connectors	
Connector	Description
P1_BT1, P2_BT1	Onboard Batteries
J1	Power Connector
J23	M.2 M-Key PCIe 5.0 x4 Slot
JFP1	Front Control Panel Connector
P1_JEDSFF1, P2_JEDSFF1- P1_JEDSFF2, P2_JEDSFF2	E1.S Connectors
P1_JTPM1, P2_JTPM1	Trusted Platform Modules
P1_JKVM1, P2_JKVM1	VGA/USB Module Connectors
P2_MCI03-P2_MCI04	MCIO PCIe 5.0 x8 Connectors
P2_MCI03-P2_MCI04	MCIO PCIe 5.0 x4 Connectors
P1_JVRM1, P2_JVRM1	VRM Headers

LED Indicators		
LED	Description	Status
P1_LED1, P2_LED1	BMC Heartbeat LEDs	Blinking Green: BMC Normal
P1_LED2, P2_LED2	BMC Error LEDs	Solid Red: CPLD Recovery Failed

Memory Support

The BH4SR2-25G motherboard supports up to 128 GB of ECC and non-ECC DDR5 UDIMM memory with speeds of up to 5600 MT/s in four DIMM slots, with two DIMM slots per node.

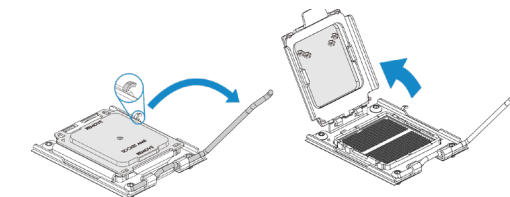
Four DIMM Slots							
Node	DIMM Slot	DIMM Configuration and Maximum Memory Speed (MT/s)					
		1	2	3	4	5	6
Node A	DIMMB2					Up to 5600 MT/s	Up to 5600 MT/s
	DIMMA2	Up to 5600 MT/s		Up to 5600 MT/s		Up to 5600 MT/s	Up to 5600 MT/s
Node B	DIMMA2				Up to 5600 MT/s		Up to 5600 MT/s
	DIMMB2		Up to 5600 MT/s	Up to 5600 MT/s	Up to 5600 MT/s		Up to 5600 MT/s

Processor Installation

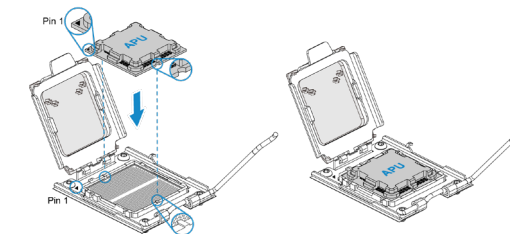
The BH4SR2-25G motherboard supports dual AMD EPYC™ 4004/4005 processors with a Thermal Design Power (TDP) of up to 110 W in an AM5 socket.

Note: Do not remove the plastic cover covering the outside of the socket. This cover will pop out during the installation of the processor.

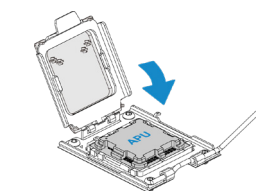
- 1 Use a finger to push down the lever, then move the lever rightward. Pull the lever until it passes over the processor socket.



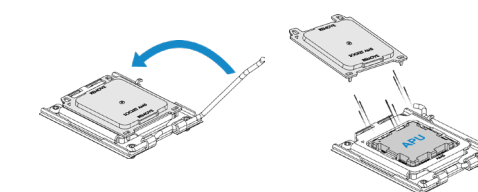
- 2 Pick up the processor on its left and right edges. Hold the processor over the socket and align the arrow on the top-left corner of the processor with the arrow on the top-left corner of the socket. Gently lower it onto the AM5 socket pins.



- 3 With the processor in the socket, lower the socket force frame.



- 4 Reattach the lever arm onto the right side of the socket. The outer plastic cover will pop out when the lever arm is reattached.



- 5 When finished, the socket force frame will secure the processor.

