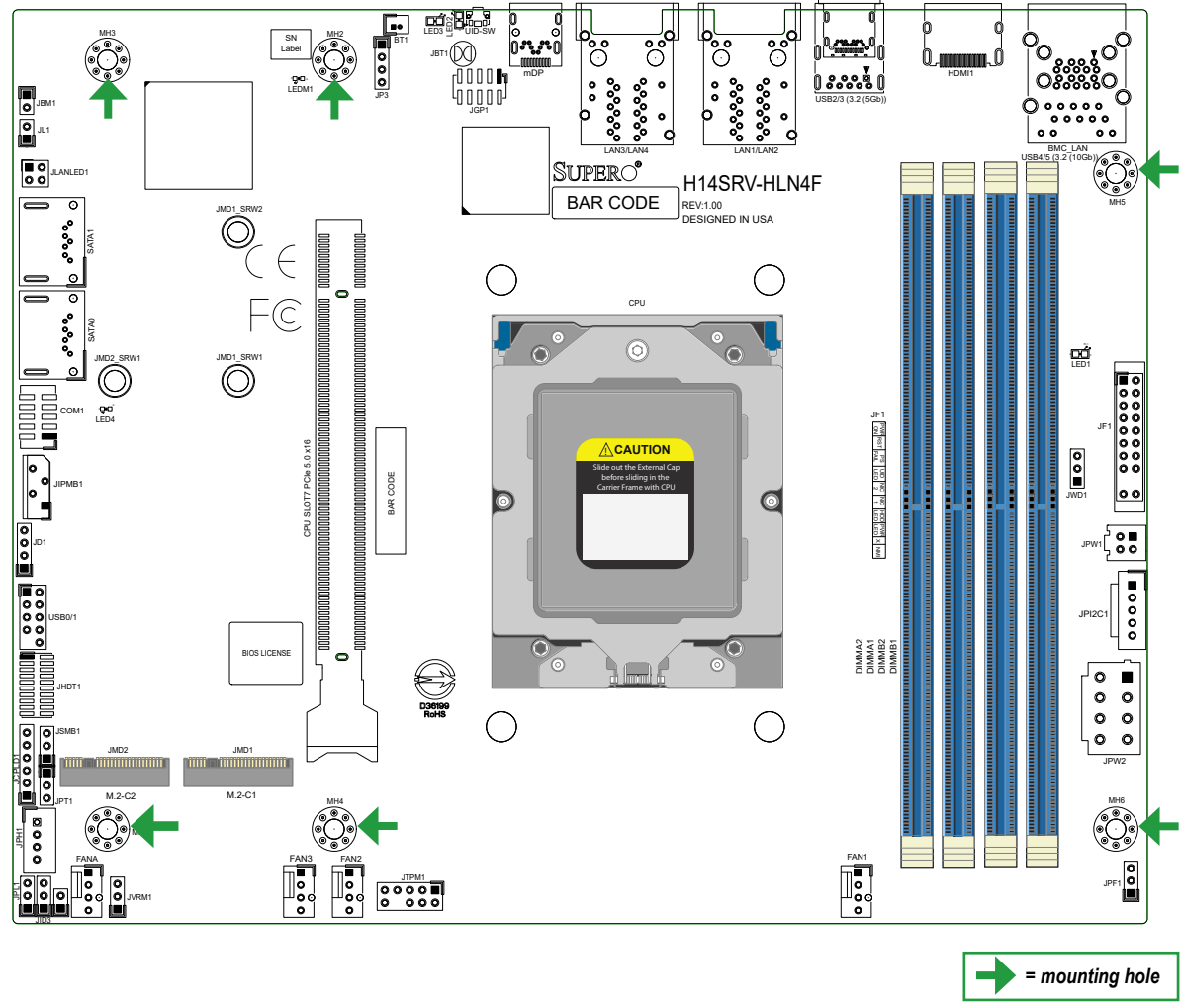


# SUPERMICR® H14SRV-HLN4F Quick Reference Guide

Package Contents  
 • One Supermicro Motherboard  
 • One Quick Reference Guide

**WARNING:** This product can expose you to chemicals including lead, known to the State of California to cause cancer and birth defects or other reproductive harm. For more information, go to [www.P65Warnings.ca.gov](http://www.P65Warnings.ca.gov).

## Motherboard Layout and Features



## Jumpers and Connectors

| Jumpers |                                |                                |
|---------|--------------------------------|--------------------------------|
| Jumper  | Description                    | Default Setting                |
| JBM1    | Disable IPMI Shared LAN        | Open (Normal)                  |
| JBT1    | CMOS Clear                     | Open (Normal)                  |
| JID3    | POWER_LIMIT_SEL                | Pins 2-3 (Disable Power Limit) |
| JPF1    | Power Force On                 | Pins 1-2 (Normal)              |
| JPL1    | LAN1/2/3/4 Enable/Disable      | Pins 1-2 (Enabled)             |
| JPT1    | Onboard TPM 2.0 Enable/Disable | Pins 1-2 (Enabled)             |
| JWD1    | Watchdog Timer                 | Pins 1-2 (Reset)               |

| Connectors      |   |
|-----------------|---|
| Connector       | Description   |
| BMC_LAN         | BMC LAN Port  |
| BT1             | Onboard Battery   |
| COM1            | COM Header  |
| FAN1-FAN3, FANA | Fan Headers   |
| HDMI1           | High Definition Multimedia Interface                      |
| JD1             | Speaker Header (Pins 1-4: Speaker)                        |
| JF1             | Front Control Panel Header                                |
| JGP1            | General Purpose I/O Header                                |
| JIPMB1          | External BMC I <sup>2</sup> C Header                      |
| JL1             | Chassis Intrusion Header                                  |
| JLANLED1        | LAN Activity LED Header                                   |
| JMD1            | M.2 M-Key PCIe 5.0 x4 (2280) Slot                         |
| JMD2            | M.2 M-Key PCIe 5.0 x4 (22110) Slot                        |
| JPH1            | 4-pin HDD Power Connector                                 |
| JPIC1           | Power System Management Bus (SMB) I <sup>2</sup> C Header |
| JPW1            | 4-pin +12 V Power Source                                  |
| JPW2            | 8-pin +12 V CPU Power Connector (Required)                |
| JSMB1           | System Management Bus Header                              |
| JTPM1           | Trusted Platform Module/Port 80 Connector                 |
| LAN1-LAN4       | 1 GbE (RJ45) LAN Ports                                    |
| mDP             | Mini DisplayPort  |
| SATA0, SATA1    | SATA 3.0 Ports  |
| UID_SW          | Unit Identifier Button                                    |
| USB0/1          | USB 2.0 Header  |
| USB2            | USB 3.2 Port (5 Gb)                                       |
| USB3, USB4/5    | USB 3.2 Ports (10 Gb)                                     |

| LED Indicators |                           |                                   |
|----------------|---------------------------|-----------------------------------|
| LED            | Description               | Status                            |
| LED1           | Power LED                 | Solid Green: Power On             |
| LED2           | Unit Identifier (UID) LED | Solid Blue: Unit Identified       |
| LED3           | Power Fail/Fan Fail LED   | Solid Red: Power Fail or Fan Fail |
| LED4           | CPLD Heartbeat            | Blinking Green: CPLD Normal       |
| LEDM1          | BMC Heartbeat             | Blinking Green: BMC Normal        |

## Processor Support

The H14SRV-HLN4F motherboard supports the AMD® EPYC™ 4005 processor with up to 16 cores and a Thermal Design Power (TDP) of 65 W in an AM5 Socket 1718.

## Memory Support

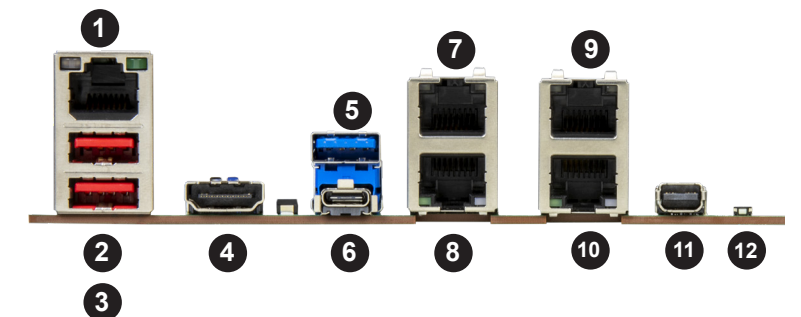
The H14SRV-HLN4F motherboard supports up to 192 GB of DDR5 ECC UDIMM memory with speeds of up to 5600 MT/s in four slots.

### DIMM Memory Installation

When installing memory modules, the DIMM slots should be populated in the following order: DIMMA1, DIMMA2, DIMMB1, and DIMMB2.

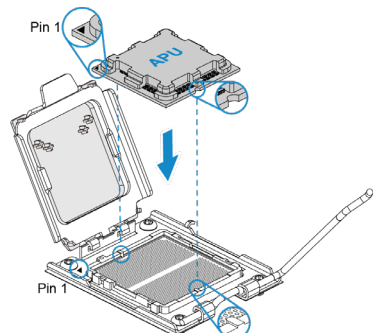
It is recommended to use DIMM modules of the same type, size, and speed. Mixed DIMM speeds can be installed. However, all DIMMs will run at the speed of the slowest DIMM. The motherboard will support an odd number amount of memory modules. For best memory performance, install DIMM modules in pairs to activate memory interleaving.

## I/O Ports

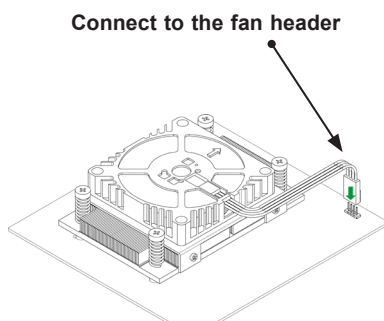


| # | Description | # | Description           | #  | Description             |
|---|-------------|---|-----------------------|----|-------------------------|
| 1 | BMC_LAN     | 5 | USB2 (3.2 Gen1)       | 9  | LAN4                    |
| 2 | USB4 (3.2)  | 6 | USB 3.2 Gen2 Alt Mode | 10 | LAN3                    |
| 3 | USB5 (3.2)  | 7 | LAN2                  | 11 | mDP (BMC video display) |
| 4 | HDMI Port   | 8 | LAN1                  | 12 | UID Button              |

## Processor Installation



## Heatsink Installation



## Front Control Panel (JF1)

|       |                      |    |    |                 |
|-------|----------------------|----|----|-----------------|
| PWR   | Power Button         | 1  | 2  | GND             |
| Reset | Reset Button         | 3  | 4  | GND             |
|       | Power Fail LED+      | 5  | 6  | Power Fail LED- |
|       | UID LED-             | 7  | 8  | Fan Fail LED    |
|       | NIC2 Link LED+       | 9  | 10 | NIC2 Link LED-  |
|       | NIC1 Link LED+       | 11 | 12 | NIC1 Link LED-  |
|       | HDD LED+/UID Switch+ | 13 | 14 | HDD LED-        |
|       | PWR LED+             | 15 | 16 | PWR LED-        |
|       | Key, no pin          | 17 | 18 | Key, no pin     |
|       | NMI Switch           | 19 | 20 | GND             |

Download Drivers and Utilities: <https://www.supermicro.com/wdl/driver/>

Refer to the Component Installation section of the user manual for information on jumpers, connectors, LED Indicators, memory support, and processor installation instructions.

MNL-2864-QRG-10a

© 2026 Supermicro Computer Inc. All rights reserved. Reproduction of this document, whether in part or in whole, is strictly prohibited without Supermicro's written consent. All trademarks are property of their respective entities. All information provided is deemed accurate at the time of printing, however, it is not guaranteed.