

CONTACT INFORMATION

- Website: www.supermicro.com
- General Information: marketing@supermicro.com
- Technical Support: support@supermicro.com
- Phone: +1 (408) 503-8000, Fax: +1 (408) 503-8008

FOR YOUR SYSTEM TO WORK PROPERLY, PLEASE DOWNLOAD APPROPRIATE

DRIVERS/IMAGES/USER'S MANUAL FROM THE LINKS BELOW:

- Manuals: <http://www.supermicro.com/support/manuals>
- Drivers & Utilities: <https://www.supermicro.com/wftp/driver>
- Safety: http://www.supermicro.com/about/policies/safety_information.cfm

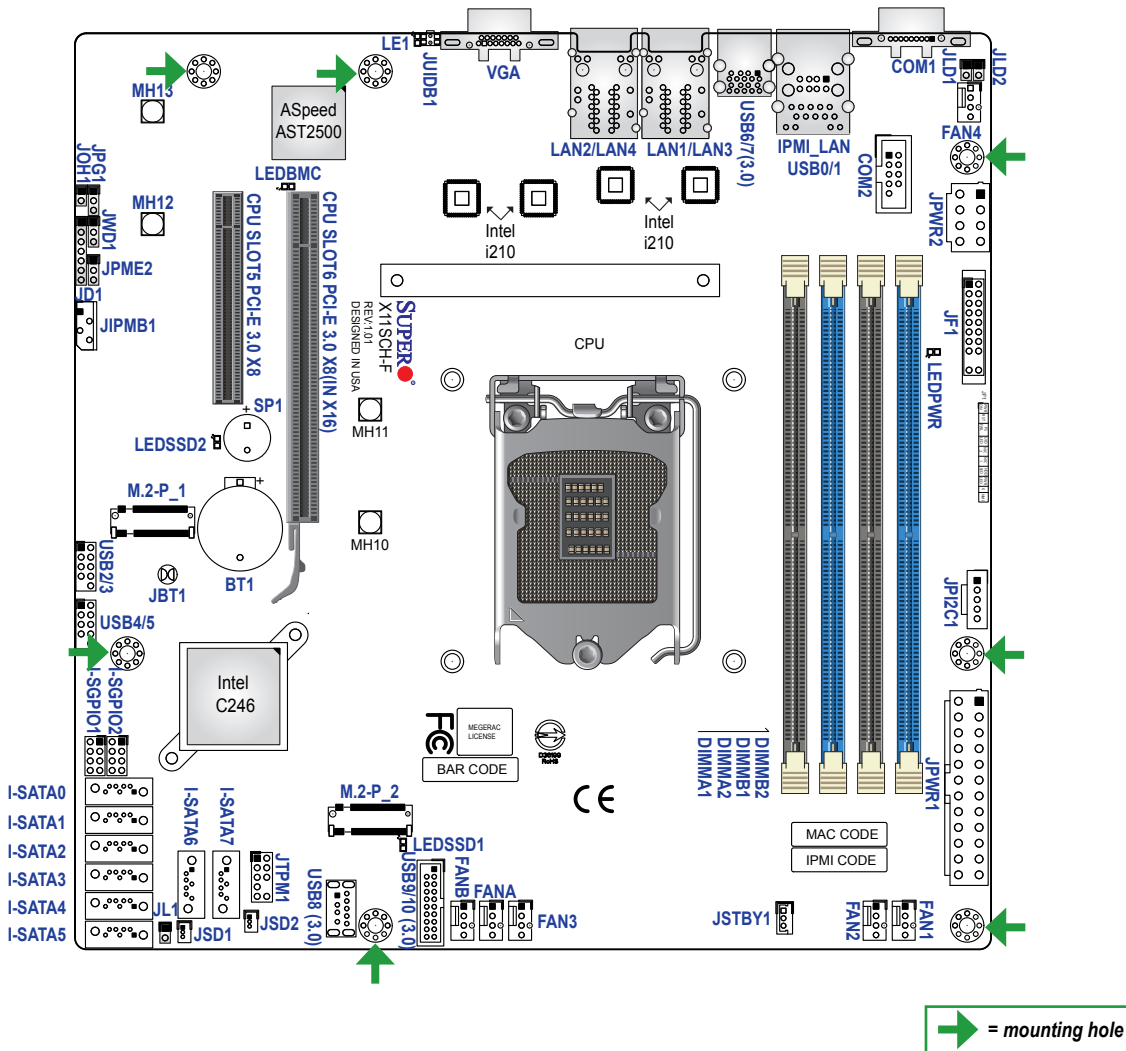
PACKAGE CONTENTS

- One (1) Supermicro Motherboard
- One (1) I/O Shield
- Six (6) SATA Cables
- One (1) Quick Reference Guide

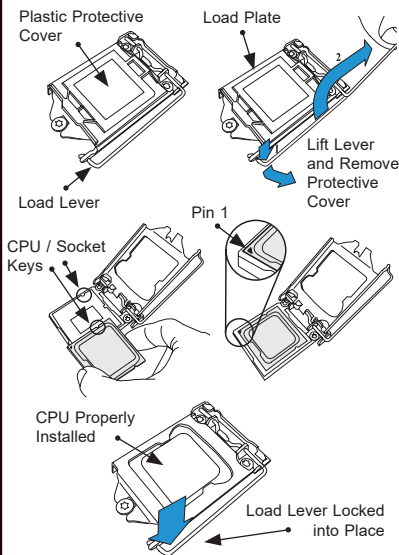


WARNING: This product can expose you to chemicals including lead, known to the State of California to cause cancer and birth defects or other reproductive harm. For more information, go to www.P65Warnings.ca.gov.

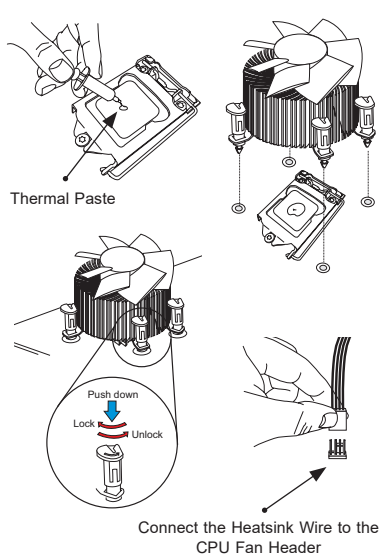
Motherboard Layout and Features



CPU Installation



Heatsink Installation



Front Control Panel (JF1)

PWR	Power Button	1	2	Ground
Reset	Reset Button			Ground
	3.3V			Power Fail LED
	UID LED			OH/Fan Fail LED
	3.3V LAN			NIC2 Active LED
	3.3V LAN			NIC1 Active LED
	UID SW			HDD LED
	3.3V			PWR LED
	X			X
	NMI	19	20	Ground

Connectors and LED Indicators

Connectors	
Connector	Description
BT1	Onboard Battery
COM1, COM2	COM Port, COM Header
FAN1 ~ FAN4 FANA, FANB	CPU/System Fan Headers
IPMI_LAN	Dedicated IPMI LAN Port
I-SATA0 ~ I-SATA7	Intel® PCH SATA 3.0 Ports (with RAID 0, 1, 5, 10) I-SATA6 and I-SATA7 supports SuperDOM
I-SGPIO1, I-SGPIO2	Serial Link General Purpose I/O Headers
JLD1	LAN3 Activity LED Connector (X11SCH-LN4F only)
JLD2	LAN4 Activity LED Connector (X11SCH-LN4F only)
JD1	Power LED Indicator/Speaker Header (Pins 1-3: Power LED; Pins 4-7: Speaker)
JF1	Front Control Panel Header
JIPMB1	4-pin BMC External I²C Header (for an IPMI card)
JL1	Chassis Intrusion Header
JOH1	Overheat/Fan Fail LED Header
JPI²C1	Power I²C System Management Bus (SMB) Header
JPWR1	24-pin ATX Power Supply Connector
JPWR2	8-pin Power Connector
JSD1, JSD2	SATA DOM Power Connectors
JSTBY1	Standby Power Header
JTPM1	Trusted Platform Module (TPM)/Port 80 Header
JUIDB1	Unit Identifier (UID) Switch
LAN1 ~ LAN4	1GbE LAN Ports X11SCH-F Only: LAN1 ~ LAN2 X11SCH-LN4F Only: LAN1 ~ LAN4
M.2-P_1, M.2-P_2	M.2 Slots for PCI-E 3.0 x4 (Supports M-Key 2280 / 22110 and Intel Optane Memory)
MH10 ~ MH13	M.2 Mounting Holes
SLOT5	CPU PCI-E 3.0 x8 Slot
SLOT6	CPU PCI-E 3.0 x8 (in x16) Slot
SP1	Onboard Buzzer
USB0/1	Back Panel Universal Serial Bus (USB) 2.0 Ports
USB2/3, USB4/5	Front Accessible USB 2.0 Headers
USB6/7	Back Panel USB 3.1 Gen 2 Ports
USB8	USB 3.1 Gen 1 Type-A Header
USB9/10	Front Accessible USB 3.1 Gen 1 Header
VGA	VGA Port

LED Indicators

LED	Description	Status
LE1	Unit Identifier (UID) LED	Solid Blue: Unit Identified
LEDBMC	BMC Heartbeat LED	Blinking Green: BMC Normal
LEDPWR	Onboard Power LED	Solid Green: Power On
LEDSSD1, LEDSSD2	M.2 LED	Blinking Green: Device Working

Jumpers

Jumpers		
Jumper	Description	Default
JBT1	CMOS Clear	Open (Normal)
JPG1	VGA Enable	Pins 1-2 (Enabled)
JPME2	ME Manufacturing Mode	Pins 1-2 (Normal)
JWD1	Watchdog Timer	Pins 1-2 (Reset)

CPU Support

The X11SCH-F/-LN4F supports an Intel® Xeon® E-2200/2100, 9th/8th Generation Core i3, Pentium, and Celeron (Socket H4 - LGA 1151) series processor with a thermal design power (TDP) of up to 95W and eight cores.

Memory Support and Installation

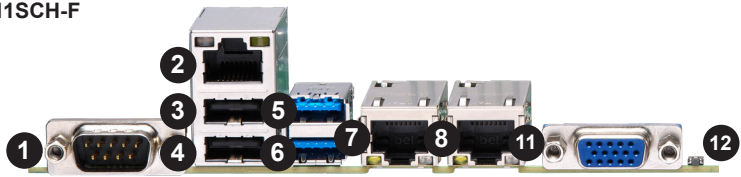
The X11SCH-F/-LN4F supports up to 128GB of unbuffered (UDIMM) DDR4 (288-pin) ECC memory (2-DIMM per channel) with speeds of up to 2666MHz in four memory slots. See below for additional memory information.

- The blue slots must be populated first.
- Always use DDR4 memory of the same type, size, and speed. Mixed DIMM speeds can be installed. However, all DIMMs will run at the speed of the slowest DIMM.
- The motherboard will support odd-numbered modules. However, to achieve the best memory performance, a balanced memory population is recommended.

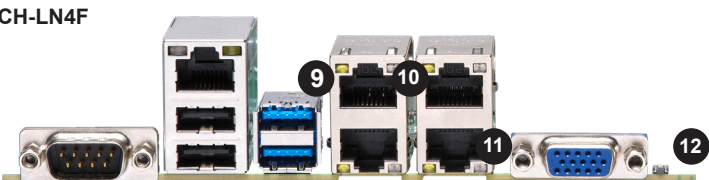
1 CPU, 4-DIMM Slots	
Number of DIMMs	Memory Population Sequence
1	DIMMB2
2	DIMMB2/ DIMMA2
3 (Unbalanced: Not Recommended)	DIMMB2 / DIMMA2 / DIMMB1
4	DIMMB2 / DIMMA2 / DIMMB1 / DIMMA1

Back Panel I/O Connectors

X11SCH-F



X11SCH-LN4F



#	Description	#	Description	#	Description
1	COM1	5	USB7 (USB 3.1 Gen 2)	9**	LAN3 (-LN4F only)
2	Dedicated IPMI LAN	6	USB6 (USB 3.1 Gen 2)	10**	LAN4 (-LN4F only)
3	USB1	7	LAN1	11	VGA Port
4	USB0	8	LAN2	12	UID Switch

Note: Graphics shown in this quick reference guide are for illustration only. Your components may or may not look exactly the same as drawings shown in this guide.

Note: Refer to Chapter 1 of the User Manual for detailed information on jumpers, connectors, and LED indicators.

Note: Refer to Chapter 2 of the User Manual for detailed information on memory support and CPU/motherboard installation instructions.