

CONTACT INFORMATION

- Website: www.supermicro.com
- General Information: marketing@supermicro.com
- Technical Support: support@supermicro.com
- Phone: +1 (408) 503-8000, Fax: +1 (408) 503-8008

FOR YOUR SYSTEM TO WORK PROPERLY, PLEASE DOWNLOAD APPROPRIATE

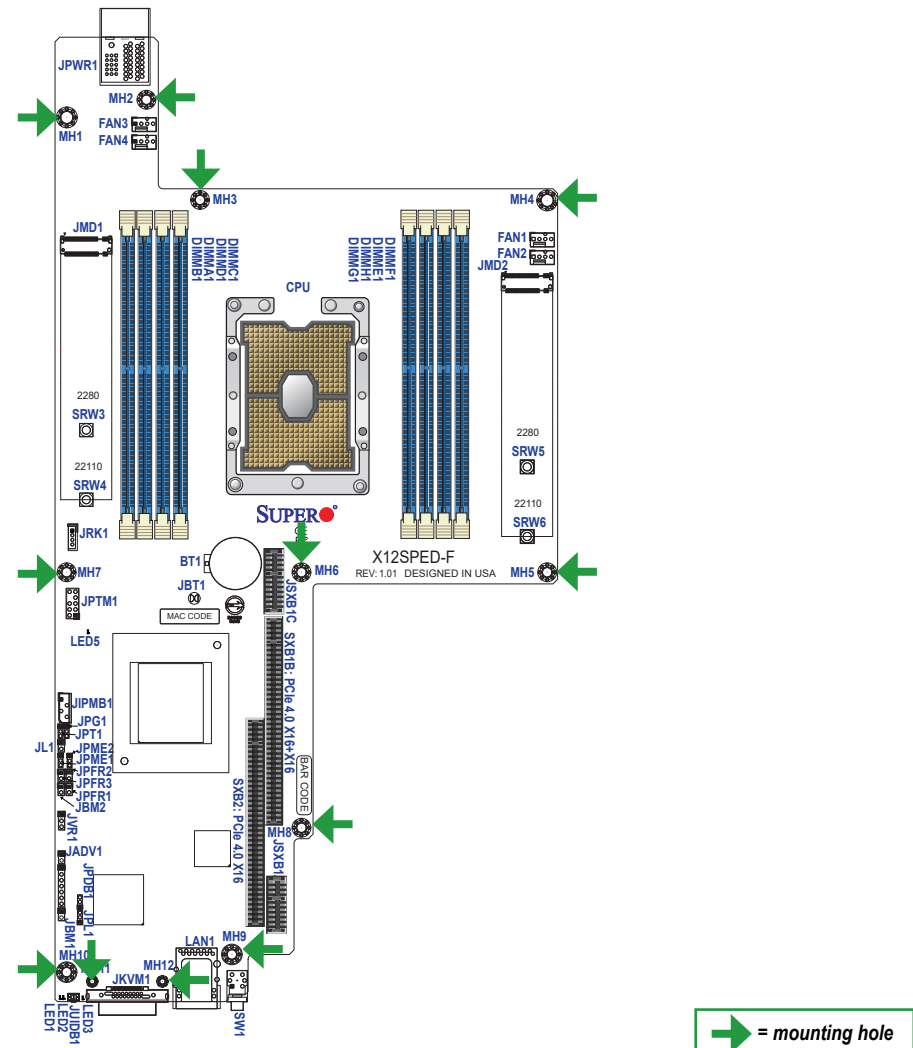
- DRIVERS/IMAGES/USER'S MANUAL FROM THE LINKS BELOW:**
- Manuals: <http://www.supermicro.com/support/manuals>
 - Drivers & Utilities: <https://www.supermicro.com/wdl/driver/>
 - Safety: http://www.supermicro.com/about/policies/safety_information.cfm

PACKAGE CONTENTS

- One Supermicro Motherboard
- One Quick Reference Guide

WARNING: This product can expose you to chemicals including lead, known to the State of California to cause cancer and birth defects or other reproductive harm. For more information, go to www.P65Warnings.ca.gov.

Motherboard Layout and Features



Jumpers, Connectors, and LED Indicators

Jumpers		
Jumper	Description	Default Setting
JBM1	Disable IPMI Share LAN	Pins 1-2 Open (Enabled)
JBT1	CMOS Clear	Open (Normal)
JPDB1	COM1 Function Selection	Pins 1-2 (BMC COM port)
JPG1	VGA Enable/Disable	Pins 1-2 (Enabled)
JPL1	LAN1 Enable/Disable	Pins 1-2 (Enabled)
JPME1	ME Recovery Mode	Pins 1-2 (Normal)
JPME2	Manufacturing Mode	Pins 1-2 (Normal)
JPT1	Onboard TPM Enable/Disable	Pins 1-2 (Enabled)

Connectors	
Connector	Description
BT1	Onboard Battery
FAN1 - FAN4	CPU/System Fan Headers (FAN1: CPU Fan)
JIPMB1	System Management Bus Header (for IPMI only)
JKVM1	KVM Connector (supports USB0/1, COM1, VGA)
JL1	Chassis Intrusion Header
JMD1	M.2 Slot (M-Key 2280/22110)
JMD2	M.2 Slot (M-Key 2280/22110)
JPWR1	Power Connector (for backplane power connector)
JRK1	Intel RAID Key Header
JTPM1	Trusted Platform Module (TPM)/Port 80 Connector
JVR1	SMB Programming Header (for debugging only)
JUIDB1	UID Switch
LAN1	LAN RJ45 Port
MH1 - MH12	Mounting Holes
SXB1A/B/C	PCIe 4.0 x16+x16 Slot
SXB2	PCIe 4.0 x16 Slot
SRW3 - SRW6	M.2 Mounting Holes
SW1	Power Button

LED Indicators		
LED	Description	Status
LED1	Onboard Power LED	Solid Green: Power On
LED2	Power/Fan Fail LED	Solid Red: Power/Fan Failed
LED3	BMC Heartbeat LED	Blinking Green: BMC Normal
LED4	Unit Identifier LED	Solid Blue: Unit Identified

CPU and Memory Support

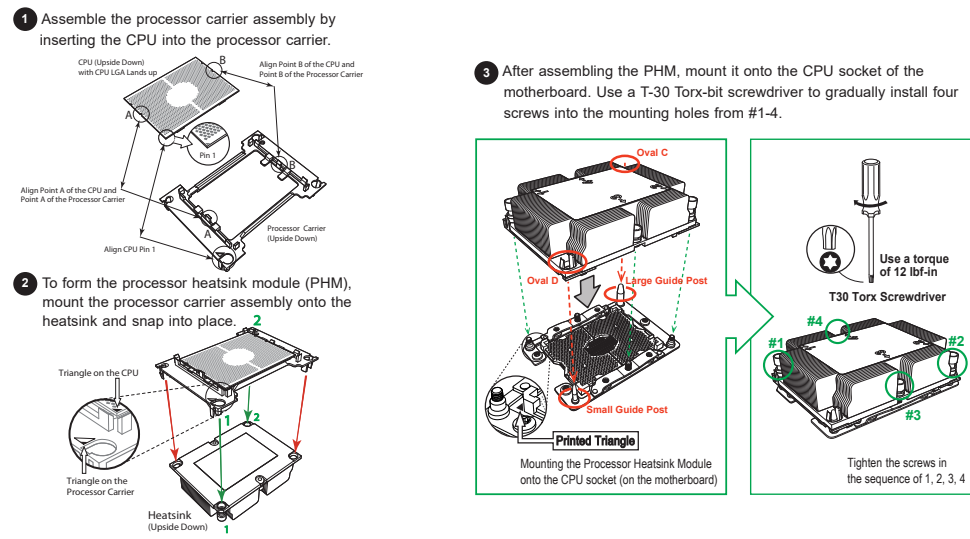
The X12SPED-F motherboard supports a 3rd Generation Intel® Xeon® Scalable Processor with up to 32 cores with a TDP of 185 W or 36 cores with a TDP of 205 W in a Socket P+ socket.

The motherboard supports up to 2 TB of ECC RDIMM and LRDIMM DDR4 memory with speeds of up to 3200 MT/s in eight memory slots.

DDR4 Memory Support

Type	Ranks Per DIMM and Data Width	DIMM Capacity (GB)		Speed (MT/s); Voltage (V); Slot Per Channel (SPC) and DIMM Per Channel (DPC) *Data below assumes 2 SPC unless otherwise noted.
		8 GB	16 GB	1 DPC 1.2 V
RDIMM	SRx8	8 GB	16 GB	3200
	SRx4	16 GB	32 GB	
	DRx8	16 GB	32 GB	
RDIMM-3DS	(4R/8R) x4	2H-64F GB	2H-128 GB	3200
		4H-128 GB	4H-256 GB	
LRDIMM	QRx4	64 GB	128 GB	3200
LRDIMM-3DS	(4R/8R) X4	4H-128 GB	2H-128 GB 4H-256 GB	3200

CPU and PHM Installation



Front Panel I/O Connectors



#	Description
1.	UID Switch
2.	KVM Port
3.	LAN1
4.	Power Switch

Note: Graphics shown in this quick reference guide are for illustration only. Your components may or may not look exactly the same as drawings shown in this guide.

Note: Refer to Chapter 1 of the User Manual for detailed information on jumpers, connectors, and LED indicators.

Note: Refer to Chapter 2 of the User Manual for detailed information on memory support and CPU/motherboard installation instructions.