

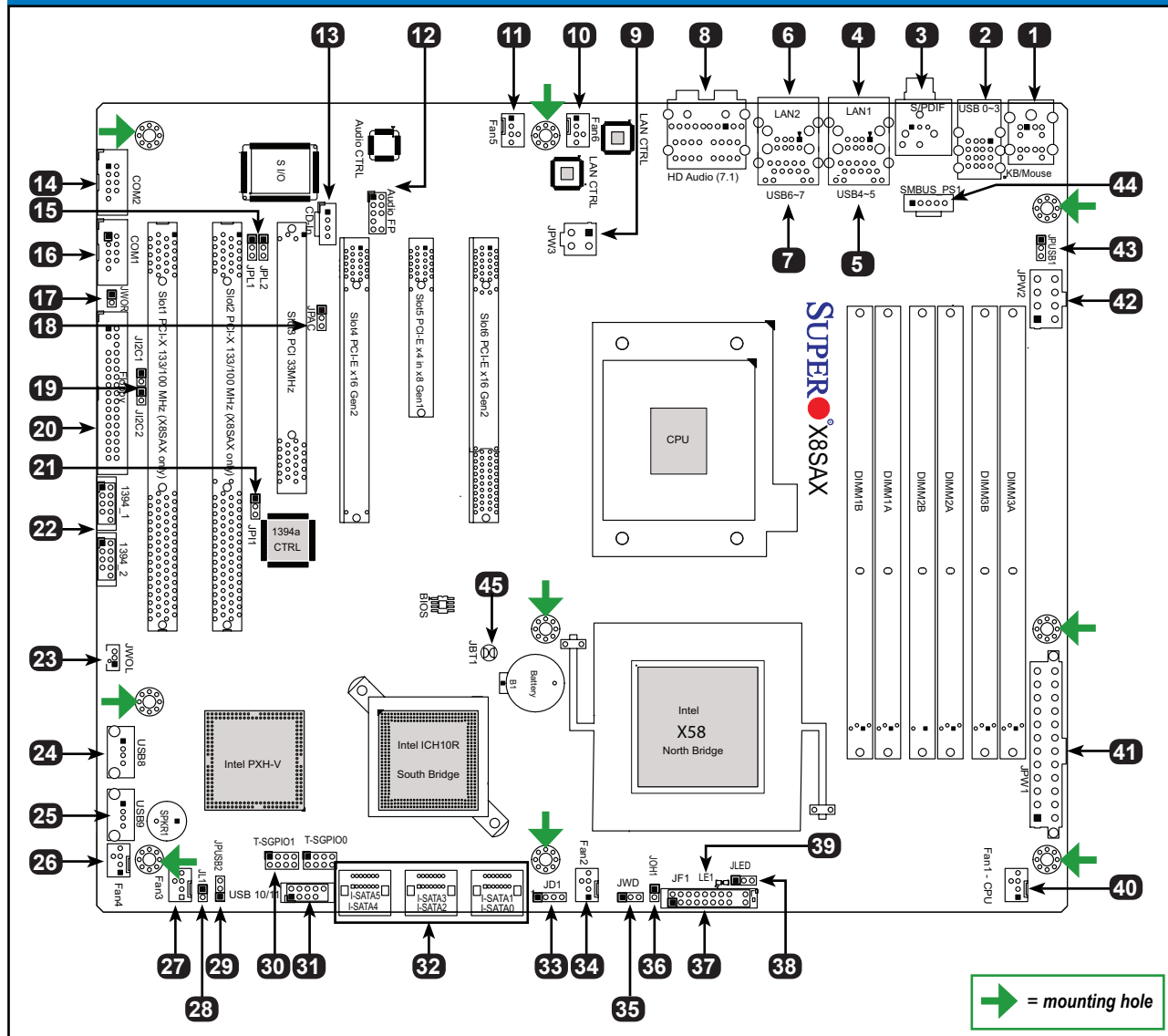
**CONTACT INFORMATION**

- www.supermicro.com (Email: support@supermicro.com)
- Manuals: http://www.supermicro.com/support/manuals
- Drivers & Utilities: ftp://ftp.supermicro.com
- Safety: http://www.supermicro.com/about/policies/safety\_information.cfm

**PACKAGE CONTENTS** (Applies to individual-pack only)

- One (1) Supermicro Motherboard
- Six (6) SATA Cables
- One (1) Floppy Drive Ribbon Cable
- One (1) 1394a Connector
- One (1) I/O Shield
- One (1) SLI Bridge (C7X58 only)
- One (1) Quick Reference Guide

**Motherboard Layout and Features**



**Jumpers, Connectors and LED Indicators**

Jumpers			
Item #	Jumper	Description	Default
15	JPL1/JPL2	LAN 1/2 Enable	Pins 1-2 (Enabled)
18	JPAC	Audio Enable	Pins 1-2 (Enabled)
19	J12C1/J12C2	SMB to PCI Slots	Pins 2-3 (Disabled)
21	JPI1	1394a_1/2 Enable	Pins 1-2 (Enabled)
29	JPUSB2	FP USB Wake-up Enable	Pins 1-2 (Enabled)
35	JWD	Watch Dog Timer Enable	Pins 1-2 (Reset)
43	JPUSB1	Backplane USB Wake-up Enable	Pins 1-2 (Enabled)
45	JBT1	CMOS Clear	(See Chpt. 2 in User Manual)
33	JD1	Speaker/Buzzer	Pins 3-4 (Internal Speaker)

Connectors		
Item #	Connector	Description
1	KB/Mouse	Keyboard/Mouse Connectors
2, 5, 7	USB0-3, USB4/5, 6/7	(Back Panel) Universal Serial Bus (USB) Ports
3	S/PDIF	Sony/Phillips Digital Audio Interface Format
4, 6	LAN1/LAN2	Gigabit Ethernet (RJ45) Ports
8	(HD) Audio	(BP) High Definition Audio (7.1) header
9	JPW3	+12V 4-pin Secondary Power Connector
12	Audio FP	Front Panel Audio Header
13	CD-In	Audio CD Input Header
14, 16	COM2, COM1	COM1/2 Serial Connection Headers
17	JWOR	Wake-On-Ring Header
20	Floppy	Floppy Disk Drive Connector
22	1394a_1, 1394a_2	IEEE 1394a Connection Headers
23	JWOL	Wake-On-LAN Header
24, 25, 31	USB8, USB9, USB10/11	Front Panel Accessible USB Headers
10, 11, 26 27, 34, 40	Fans 6, Fan 5, Fan4 Fans 3, Fan 2, Fan1	System/CPU Fan Headers (Fan 1: CPU fan)
28	JL1	Chassis Intrusion Header
30	T-SGPIO-0/1	Serial General Purpose Input/Output Headers
32	I-SATA 0-5	(Intel South Bridge) SATA Ports 0/1, 2/3, 4/5
36	JOH1	Overheat LED Header
37	JF1	Front Panel Control Header
38	JLED	Power LED Indicator Header
41	JPW1	24-pin ATX Main Power Connector
42	JPW2	+12V 8-pin CPU Power Connector
44	SMB_PS1	PWR supply (I <sup>2</sup> C) System Management Bus

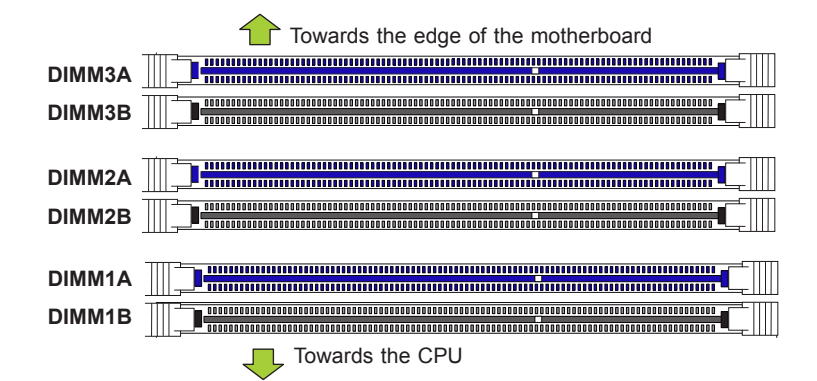
LED Indicators				
Item #	LED	Description	Color/State	Status
39	LE1	Onboard Stby PWR LED	Green: Solid on	Power On

**Memory Support**

This motherboard supports up to 24 GB of Unbuffered (UDIMM) DDR3 ECC or Non-ECC 1333/1066/800 MHz, two-way interleaved or non-interleaved SDRAM in 6 memory slots.

**Note:** For memory optimization, use only DIMM modules that have been validated by Supermicro. For the latest memory updates, please refer to our website at <http://www.supermicro.com/products/motherboard>.

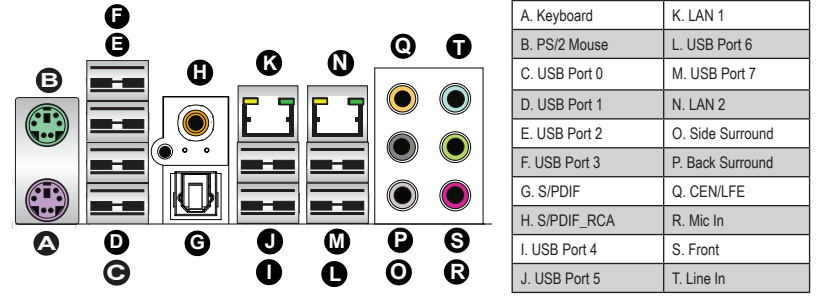
**DIMM Installation**



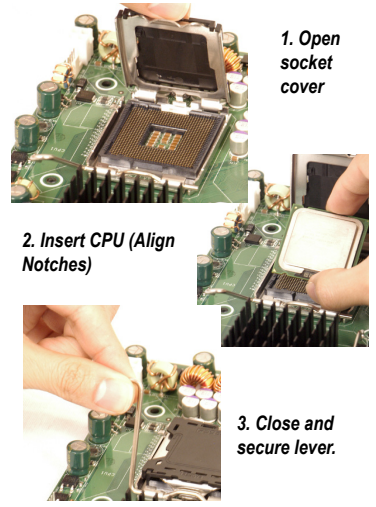
Possible System Memory Allocation & Availability		
System Device	Size	Physical Memory Remaining (-Available) (4 GB Total System Memory)
Firmware Hub flash memory (System BIOS)	1 MB	3.99 GB
Local APIC	4 KB	3.99 GB
Area Reserved for the chipset	2 MB	3.99 GB
I/O APIC (4 Kbytes)	4 KB	3.99 GB
PCI Enumeration Area 1	256 MB	3.76 GB
PCI Express (256 MB)	256 MB	3.51 GB
PCI Enumeration Area 2 (if needed) -Aligned on 256-MB boundary-	512 MB	3.01 GB
VGA Memory	16 MB	2.85 GB
TSEG	1 MB	2.84 GB
Memory available for the OS & other applications		2.84 GB

**Note:** The motherboard will NOT boot if DIMM module(s) are installed in any of the Bank2 slots but none in the Bank1 slots. The first DIMM module must be installed in DIMM1A, and all Bank1 slots must be filled before populating any Bank2 slot(s).

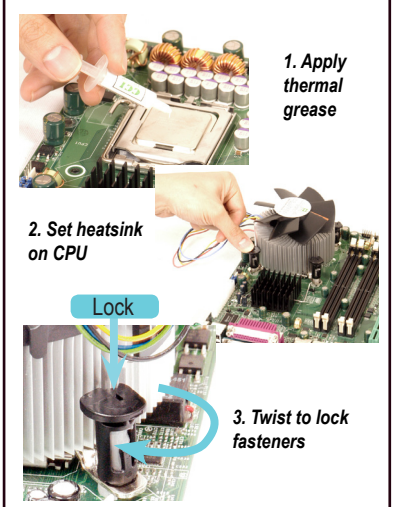
**Back Panel IO Connectors**



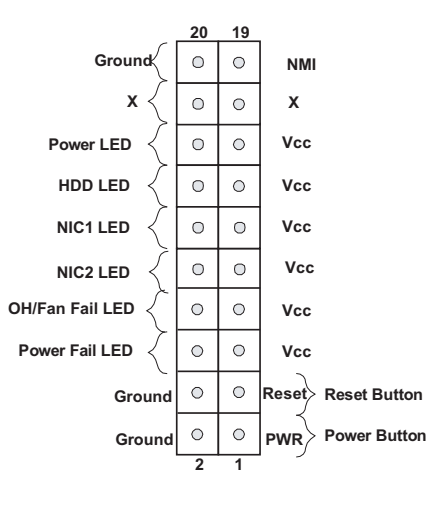
**CPU Installation**



**Heatsink Installation**



**Front Panel Control (JF1)**



**Note:** Graphics shown in this quick reference guide are for illustration only. Your components may or may not look exactly the same as drawings shown in this guide.

**Note:** Refer to Chapter 2 of the User Manual for detailed information on jumpers, connectors, and LED indicators.

**Note:** Refer to Chapter 2 of the User Manual for detailed information on memory support and CPU/motherboard installation instructions.