

CONTACT INFORMATION

- Website: [www.supermicro.com](http://www.supermicro.com)
- General Information: [marketing@supermicro.com](mailto:marketing@supermicro.com)
- Technical Support: [support@supermicro.com](mailto:support@supermicro.com)
- Phone: +1 (408) 503-8000, Fax: +1 (408) 503-8008

FOR YOUR SYSTEM TO WORK PROPERLY, PLEASE DOWNLOAD APPROPRIATE

DRIVERS/IMAGES/USER'S MANUAL FROM THE LINKS BELOW:

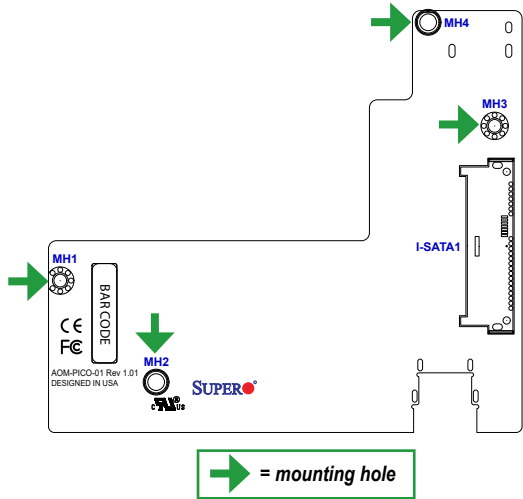
- Manuals: <http://www.supermicro.com/support/manuals>
- Drivers & Utilities: [ftp://ftp.supermicro.com/CDR\\_Images/](ftp://ftp.supermicro.com/CDR_Images/)
- Safety: [http://www.supermicro.com/about/policies/safety\\_information.cfm](http://www.supermicro.com/about/policies/safety_information.cfm)

PACKAGE CONTENTS

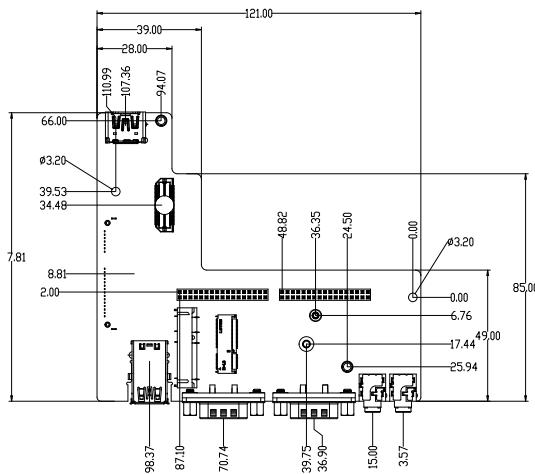
- One (1) Supermicro Add-on Module
- One (1) Quick Reference Guide

Add-on Module Layouts and Features

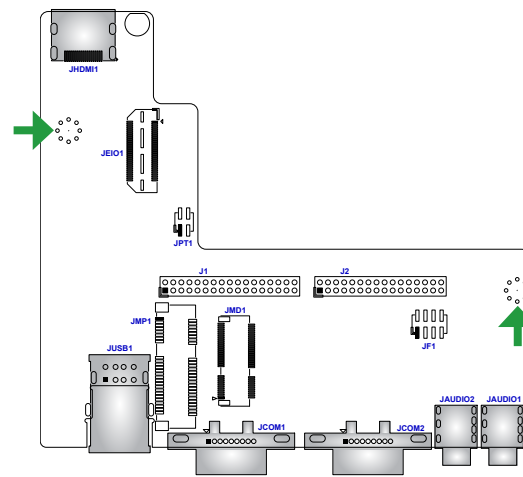
Top Layout



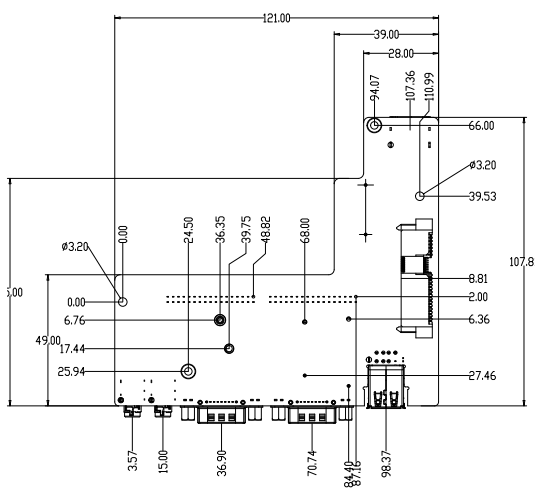
Top Mechanical Drawing



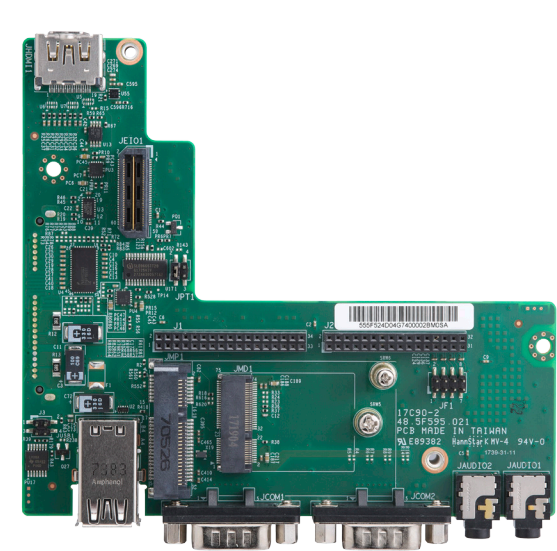
Bottom Layout



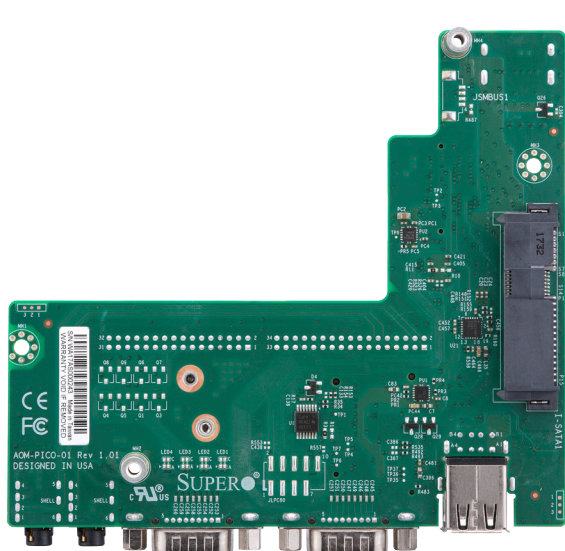
Bottom Mechanical Drawing



Add-on Module Image (Top View)



Add-on Module Image (Bottom View)



Connectors/Jumpers

Connectors

Connector	Description
J1	Stackable Pin Header A (Two RS232/422/485 and Mic-In/Line Out)
J2	Stackable Pin Header B (Two USB2.0/Front Panel/8-bit GPIO)
JAUDIO1/2	High Definition Audio Ports (Mic-in/Line-out)
JCOM1/2	COM Ports (RS232/433/485)
JEIO1	Supermicro Extension I/O Header (DP/HDMI, Two PCI-E x1, Two USB 2.0, LPC, SATA SMBus, Power)
JF1	Front Control Panel Header (Power/HDD, LED/Reset, Power Button)
JHDMI1	High Definition Multimedia Interface (HDMI) Port
JMD1	M.2 Slot (E-KEY 2230) (Supports PCI-E x 1.0 / USB 2.0)
JMP1	Mini PCI-E Slot (Supports PCI-E x1 / USB 2.0)
JUSB1	Two Back Panel USB 2.0 Ports
I-SATA1	SATA 3.0 Port
MH1 ~ MH4	Mounting Holes

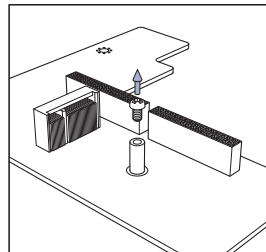
Jumpers

Jumper	Description	Pins
JTP1	TPM Enable/Disable Header	1-2 = Enabled 2-3 = Disabled

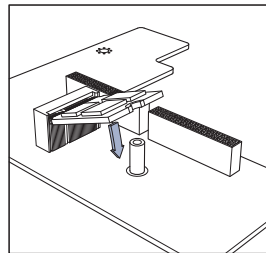
M.2 Installation

One M.2 (M-key) connector is supported by the AOM-PICO-01. M.2 devices are used for solid state storage and internal expansion. Follow the steps below in order to install an M.2 device.

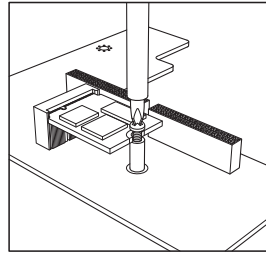
- 1) Locate the device standoff. Remove and set aside screw.



- 2) Plug M.2 device into M.2 connector and lower the semi-circle notched end onto standoff.



- 3) Replace screw and tighten to secure M.2 device into place. Do not over-tighten so as to avoid damaging the M.2 device.



Front Control Panel (JF1)

		1	2	
PWR	Power Button	○	○	Ground
Reset	Reset Button	○	○	Ground
	3.3V	○	○	HDD LED
	3.3V Stby	○	○	Power LED
		7	8	

Back Panel I/O Connectors



#	Definition	#	Definition
1	USB1 (2.0)	4	COM2
2	USB0 (2.0)	5	AUDIO2
3	COM1	6	AUDIO1

**Note:** Graphics shown in this quick reference guide are for illustration only. Your components may or may not look exactly the same as drawings shown in this guide.

**Note:** Refer to Chapter 1 of the User Manual for detailed information on jumpers, connectors, and LED indicators.

**Note:** Refer to Chapter 2 of the User Manual for detailed information on memory support and CPU/motherboard installation instructions.

