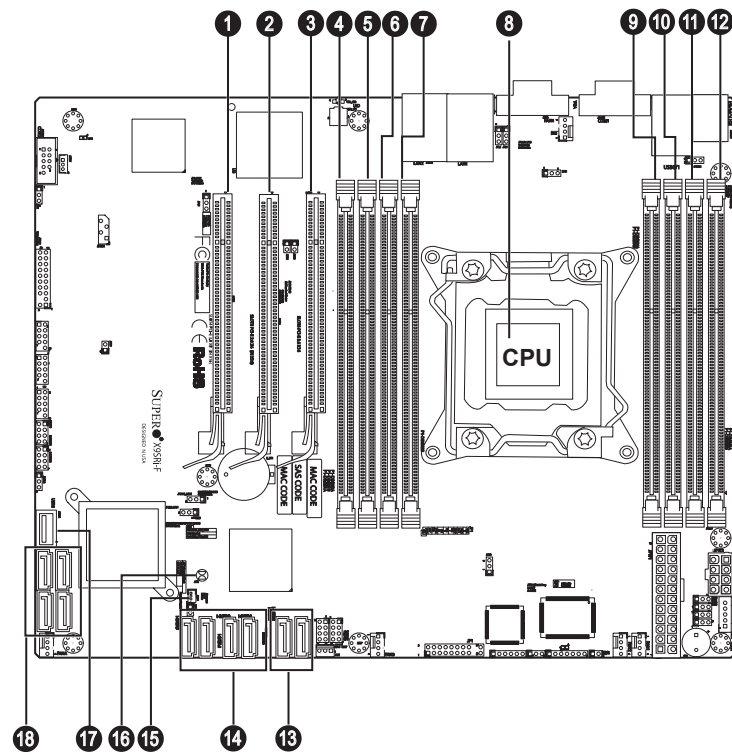
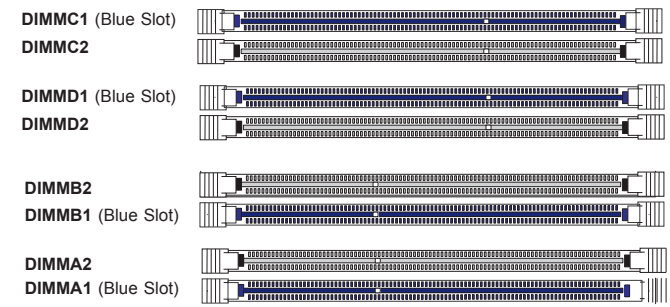
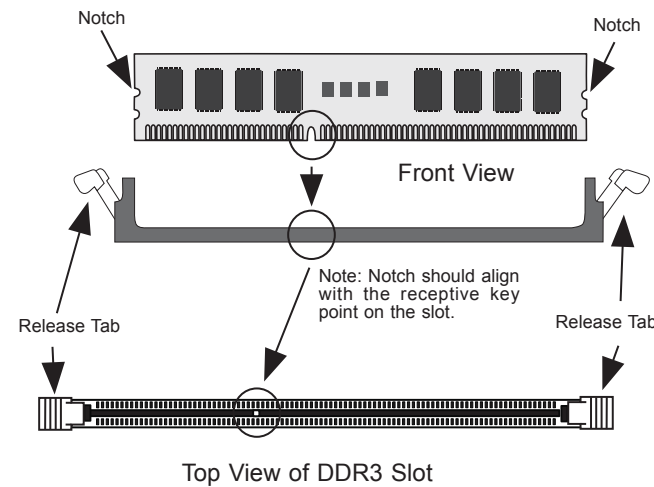


## Board Layout



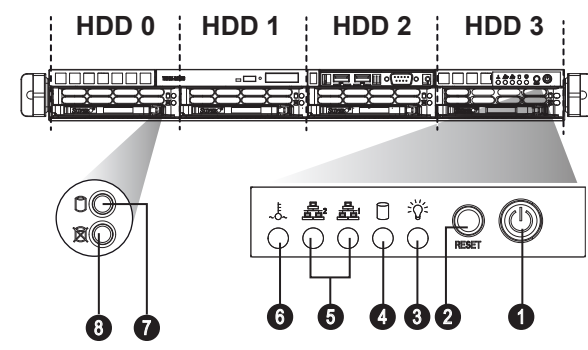
No.	Description
1	Slot4 PCI-E 3.0 x8 (in x16)
2	Slot5 PCI-E 2.0 x4 (in x16)
3	Slot6 PCI-E 3.0 x16
4	P1-DIMMA1 (BLUE) slot
5	P1-DIMMA2 slot
6	P1-DIMMB1 (BLUE) slot
7	P1-DIMMB2 slot
8	CPU
9	P1-DIMMD2 slot
10	P1-DIMMD1 (BLUE) slot
11	P1-DIMMC2 slot
12	P1-DIMMC1 (BLUE) slot
13	I-SATA 0/1; SATA 3.0 ports (6Gb/s)
14	I-SATA 2~5; SATA 2.0 ports (3Gb/s)
15	JSD1 = Disk On Module (DOM) Power
16	JBT1 = CMOS Reset
17	JUSB2 = Internal Type A USB port
18	S-SATA 0~3; SATA 2.0 ports (3Gb/s)

## MEMORY



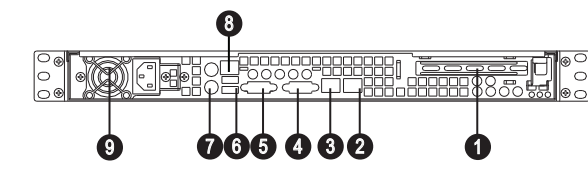
Recommended Population (Balanced)								
DIMMA1	DIMMA2	DIMMB1	DIMMB2	DIMMC1	DIMMC2	DIMMD1	DIMMD2	Total Memory
2GB	2GB							4GB
2GB	2GB	2GB	2GB					8GB
2GB	2GB	2GB	2GB	2GB	2GB			12GB
2GB	2GB	2GB	2GB	2GB	2GB	2GB	2GB	16GB
4GB	4GB							8GB
4GB	4GB	4GB	4GB					16GB
4GB	4GB	4GB	4GB	4GB	4GB			24GB
4GB	4GB	4GB	4GB	4GB	4GB	4GB	4GB	32GB
8GB	8GB							16GB
8GB	8GB	8GB	8GB					32GB
8GB	8GB	8GB	8GB	8GB	8GB			64GB
8GB	8GB	8GB	8GB	8GB	8GB	8GB	8GB	128GB
16GB	16GB							32GB
16GB	16GB	16GB	16GB					64GB
16GB	16GB	16GB	16GB	16GB	16GB			96GB
16GB	16GB	16GB	16GB	16GB	16GB	16GB	16GB	128GB
32GB	32GB							64GB
32GB	32GB	32GB	32GB					128GB
32GB	32GB	32GB	32GB	32GB	32GB			192GB
32GB	32GB	32GB	32GB	32GB	32GB	32GB	32GB	256GB

## Front view & Interface



No.	Description
1	Power Button
2	Reset Button
3	Power LED
4	Device Activity LED
5	LAN1 LED & LAN2 LED
6	Overheat & Fan Fail LED
7	Hard Drive Signal
8	Hard Drive Fail

## Rear View

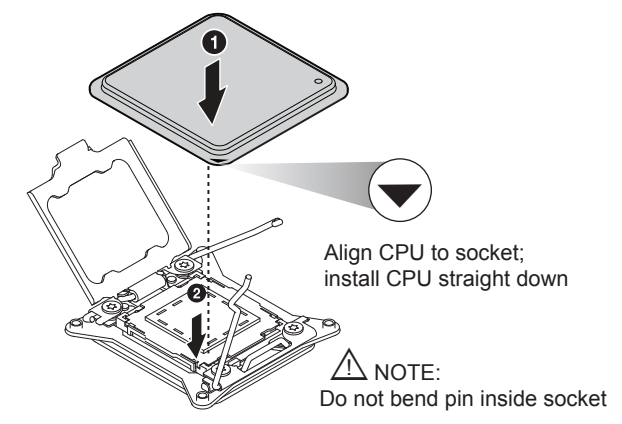


No.	Description
1	PCI-E Expansion Slot (w/riser card)
2	GbE LAN2 Port
3	GbE LAN1 Port
4	VGA Port
5	COM1 Port
6	USB 0/1 Ports
7	PS2 keyboard (purple) & Mouse (green) Ports
8	Dedicated LAN for IPMI
9	Single/Redundant Power Supply Module

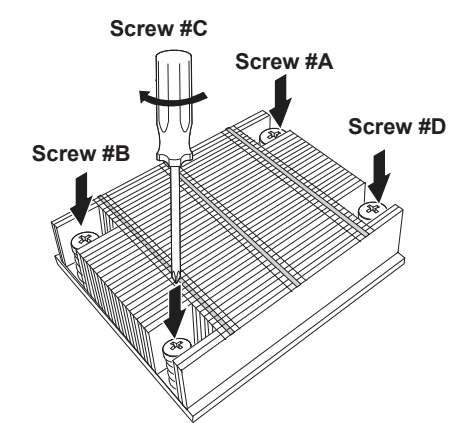
## Beep Codes

BIOS Beep Codes		
Beep Code/LED	Message	Description
1 beep	Refresh	Circuits have been reset. (Ready to power up)
5 short beeps + 1 long beep	Memory	No memory detected
5 long beeps	Display memory read/write status	Video adapter missing or with faulty memory
1 beep per device	Refresh	1 beep for each USB device
OH LED On	System	System overheat

## CPU Installation



## Heatsink Installation



- Place heatsink on top of installed CPU
- Line up the four screws to socket
- Push down heatsink and screw down as shown (cross pattern, in order: A, C, B, D)
- NOTE: Only use 6-8 lb/f of torque; otherwise, hand-tighten each screw, to avoid damaging the system

## Caution

**SAFETY INFORMATION**  
 IMPORTANT: See installation instructions and safety warning before connecting system to power supply.  
[http://www.supermicro.com/about/policies/safety\\_information.cfm](http://www.supermicro.com/about/policies/safety_information.cfm)

**WARNING:**  
 To reduce risk of electric shock/damage to equipment, disconnect power from server by disconnecting all power cords from electrical outlets.  
 If any CPU socket empty, install protective plastic CPU cap

**CAUTION:**  
 Always be sure all power supplies for this system have the same power output. If mixed power supplies are installed, the system will not operate.

For more information go to :  
<http://www.supermicro.com/support>

