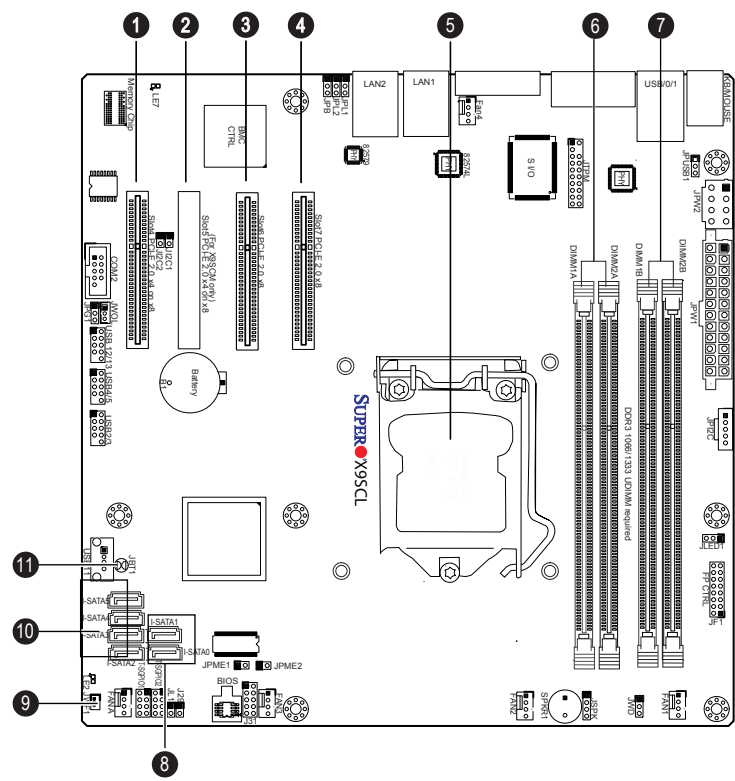


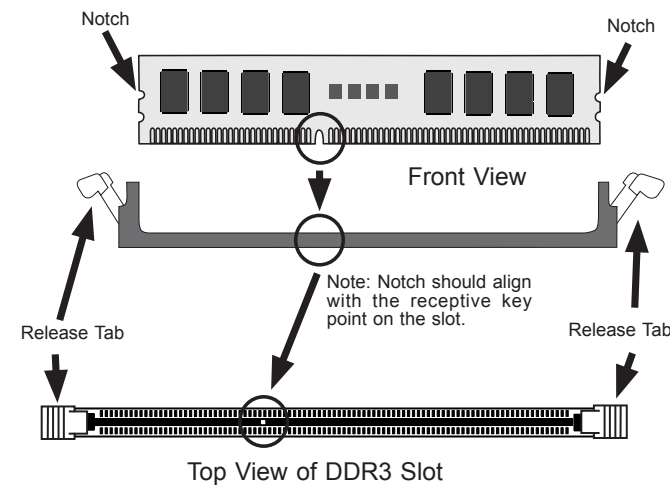
SUPERMICR[®] SuperServer 5017C-LF Quick Reference Guide

Board Layout

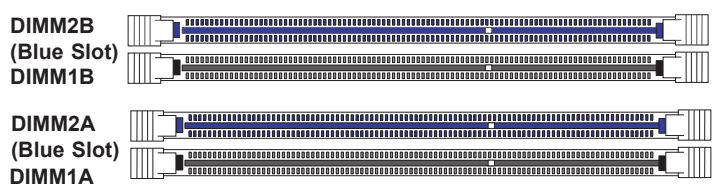


No.	Description
1	Slot4 PCI-E 2.0 x4 on x8 slot
2	N/A
3	Slot6 PCI-E 2.0 x8
4	Slot7 PCI-E 2.0 x8
5	CPU1
6	DIMM1A / DIMM2A (Blue Slot)
7	DIMM1B / DIMM2B (Blue Slot)
8	SATA 2.0 (0/1 Ports)
9	JWF1 = SATA DOM Power Connector
10	SATA 2.0 (2/3/4/5 Ports)
11	JBT1 = CMOS Clear

MEMORY

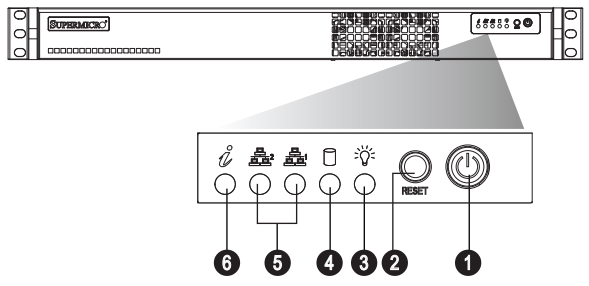


DDR3 Unbuffered Non-ECC (UDIMM) Memory				
DIMM Slots per Channel	DIMMs Populated per Channel	DIMM Type	POR Speeds	Ranks per DIMM (any combination)
2	1	Unbuffered DDR3	1066, 1333	Single Rank, Dual Rank
2	2	Unbuffered DDR3	1066, 1333	Single Rank, Dual Rank



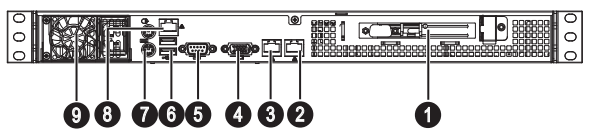
BIOS Error Beep Codes		
Beep Code/LED	Error Message	Description
1 beep	Refresh	Circuits have been reset. (Ready to power up)
5 short beeps + 1 long beep	Memory error	No memory detected in the system
8 beeps	Display memory read/write error	Video adapter missing or with faulty memory
OH LED On	System OH	System Overheat

Front View & Interface



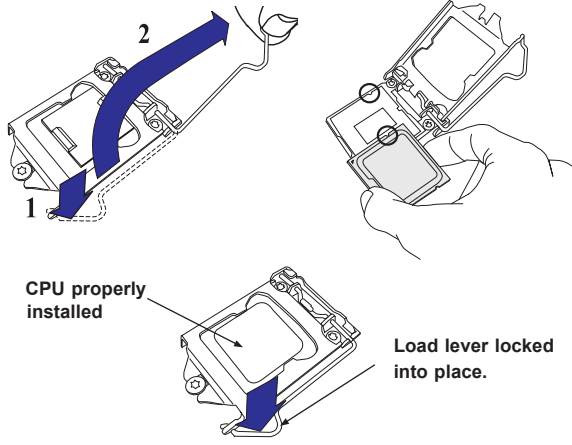
No.	Description
1	Power Button
2	Reset Button
3	Power LED
4	Device Activity LED
5	LAN1 LED & LAN2 LED
6	Information LED

Rear View

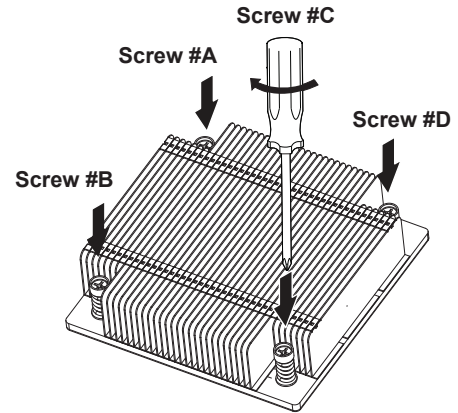


No.	Description
1	PCI-E Expansion Slot (w/riser card)
2	GbE LAN2 Port
3	GbE LAN1 Port
4	VGA Port
5	COM1 Port
6	USB 0/1 Ports
7	PS2 keyboard (purple) & Mouse (green) Ports
8	Dedicated LAN for IPMI
9	Single Power Supply Module

CPU Installation



Heatsink Installation



1. Place heatsink on top of installed CPU
2. Line up the four screws to socket
3. Push down heatsink and screw down as shown (cross pattern, in order: A, C, B, D)
4. NOTE: Only use 6-8 lb/f of torque; otherwise, hand-tighten each screw, to avoid damaging the system

Caution

SAFETY INFORMATION
IMPORTANT: See installation instructions and safety warning before connecting system to power supply.
http://www.supermicro.com/about/policies/safety_information.cfm

WARNING:
To reduce risk of electric shock/damage to equipment, disconnect power from server by disconnecting all power cords from electrical outlets.
If any CPU socket empty, install protective plastic CPU cap

CAUTION:
Always be sure all power supplies for this system have the same power output. If mixed power supplies are installed, the system will not operate.

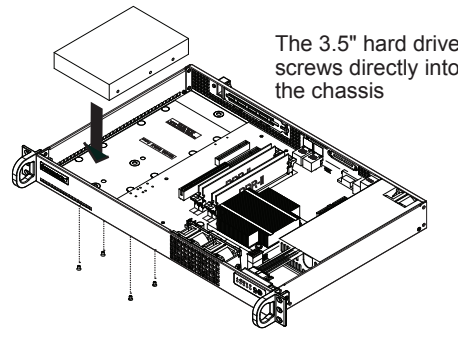
For more information go to :
<http://www.supermicro.com/support>

Serial ATA Drive Installation

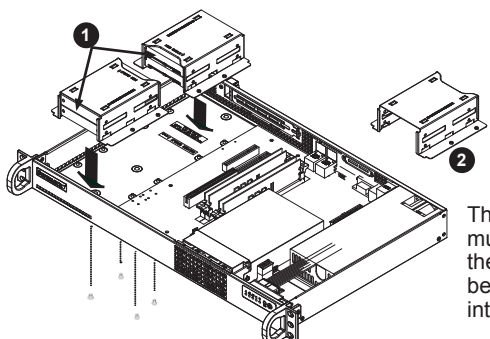
1. First power down the system and then remove the top cover of the chassis.
2. Remove the drive from the drive tray.
3. Install a drive with the printed circuit board side facing down and so that the mounting holes align with those in the chassis.
4. Secure the drive to the tray with the four screws.
6. Replace the top cover when finished.

Note: the 5017C-LF can accommodate one 3.5" hard drives or up to four 2.5" hard drives.

Enterprise level hard disk drives are recommended for use in Supermicro chassis and servers.
For information on recommended HDDs, visit the Supermicro Web site at <http://www.supermicro.com>



The 3.5" hard drive screws directly into the chassis



The 2.5" hard drives (1) must be installed in their brackets (2, optional) before they are screwed into the chassis.

