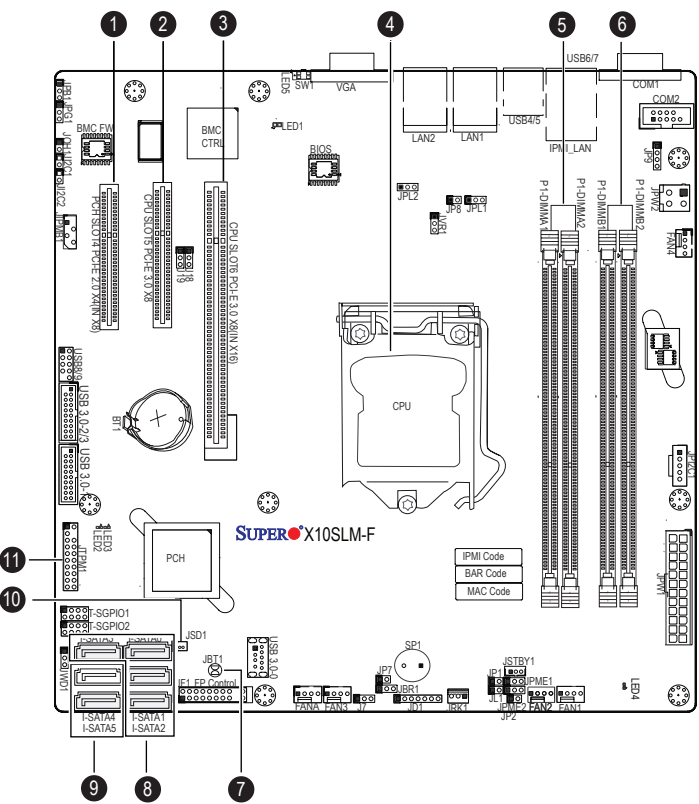


# SUPERMICR<sup>®</sup> SuperServer 5018D-MTF/MTRF Quick Reference Guide

## Board Layout

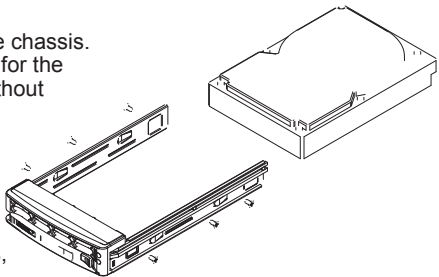


No.	Description
1	PCH Slot4 PCI-E 2.0 x4 in x8 slot
2	CPU Slot5 PCI-E 3.0 x8 slot
3	CPU Slot6 PCI-E 3.0 x8 in x16 slot
4	CPU
5	DIMMA1 / DIMMA2 (Blue Slot)
6	DIMM1B / DIMM2B (Blue Slot)
7	JBT1 = CMOS Clear
8	SATA 3.0 (0/1/2/3 Ports)
9	SATA 2.0 (4/5 Ports)
10	JSD1 = SATA DOM Power Connector
11	JTPM1 = Trusted Platform Module/Port 80 Connector

### Mounting a Drive in a Drive Carrier

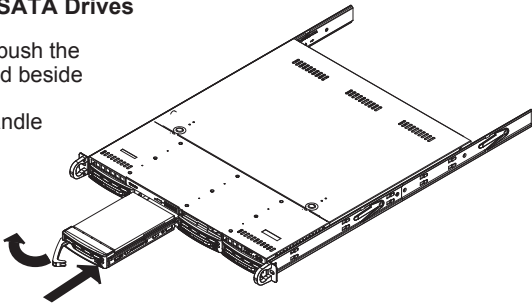
The SATA drives are mounted in drive carriers to simplify their installation and removal from the chassis. These carriers also help promote proper airflow for the system. For this reason, even empty carriers without drives installed must remain in the chassis.

1. Install a new drive into the carrier with the printed circuit board side facing down so that the mounting holes align with those in the carrier.
2. Secure the drive to the carrier with six screws, as shown.

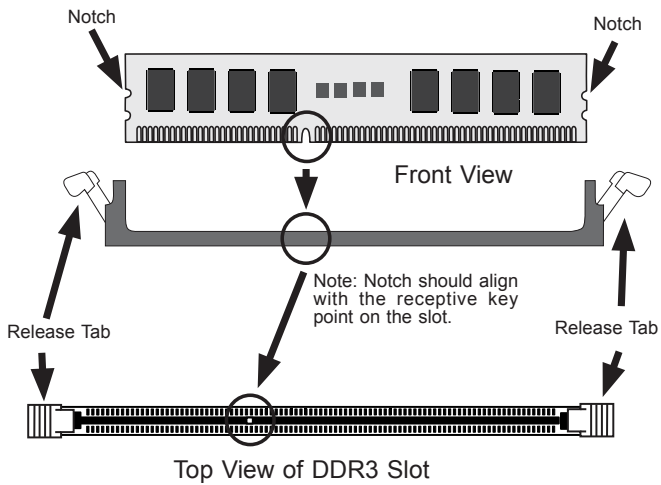


### Installing/Removing SATA Drives

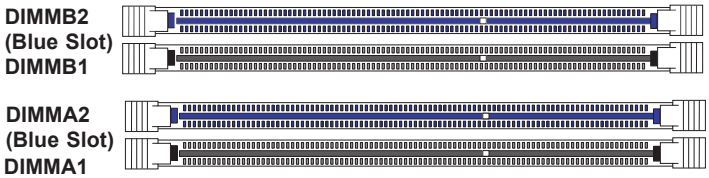
1. To remove a carrier, push the release button located beside the drive LEDs.
2. Swing the colored handle fully and use it to pull the unit straight out.



## MEMORY



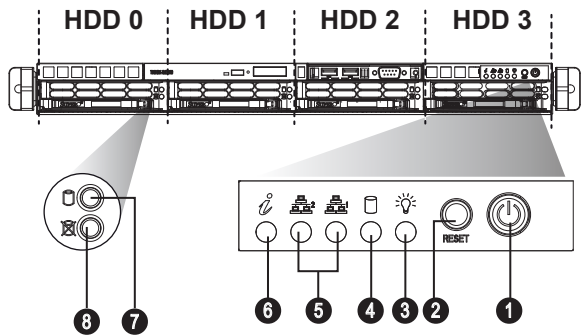
DDR3 Unbuffered Non-ECC (UDIMM) Memory				
DIMM Slots per Channel	DIMMs Populated per Channel	DIMM Type	POR Speeds	Ranks per DIMM (any combination)
2	1	Unb. ECC DDR3	1600, 1066, 1333	Single Rank, Dual Rank
2	2	Unb. ECC DDR3	1600, 1066, 1333	Single Rank, Dual Rank



## Beep Codes

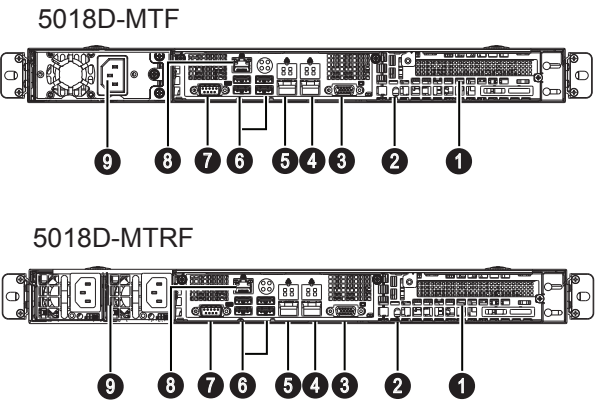
BIOS Error Beep Codes		
Beep Code/LED	Error Message	Description
1 beep	Refresh	Circuits have been reset. (Ready to power up)
5 short beeps + 1 long beep	Memory error	No memory detected in the system
8 beeps	Display memory read/write error	Video adapter missing or with faulty memory
OH LED On	System OH	System Overheat

## Front View & Interface



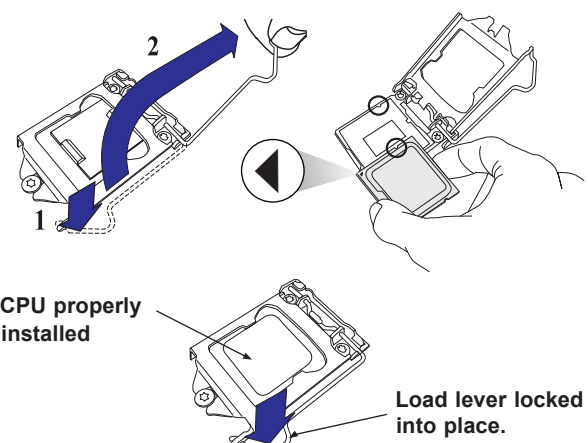
No.	Description
1	Power Button
2	Reset Button
3	Power LED
4	Device Activity LED
5	LAN1 LED & LAN2 LED
6	Information LED
7	Hard Drive Signal
8	Hard Drive Fail

## Rear View

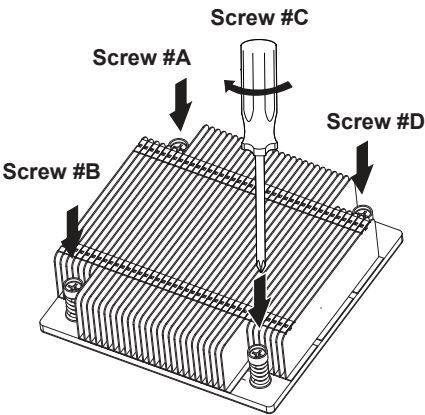


No.	Description
1	PCI-E Expansion Slot (w/riser card)
2	UID
3	GbE LAN2 Port
4	GbE LAN1 Port
5	VGA Port
6	COM1 Port
7	USB 4/5/6/7 Ports
8	Dedicated LAN for IPMI
9	Single/Redundant Power Supply Module

## CPU Installation



## Heatsink Installation



1. Place heatsink on top of installed CPU
2. Line up the four screws to socket
3. Push down heatsink and screw down as shown (cross pattern, in order: A, C, B, D)
4. NOTE: Only use 6-8 lb/f of torque; otherwise, hand-tighten each screw, to avoid damaging the system

## Caution

**SAFETY INFORMATION**  
IMPORTANT: See installation instructions and safety warning before connecting system to power supply.  
[http://www.supermicro.com/about/policies/safety\\_information.cfm](http://www.supermicro.com/about/policies/safety_information.cfm)

**WARNING:**  
To reduce risk of electric shock/damage to equipment, disconnect power from server by disconnecting all power cords from electrical outlets.  
If any CPU socket empty, install protective plastic CPU cap

**CAUTION:**  
Always be sure all power supplies for this system have the same power output. If mixed power supplies are installed, the system will not operate.

For more information go to :  
<http://www.supermicro.com/support>

