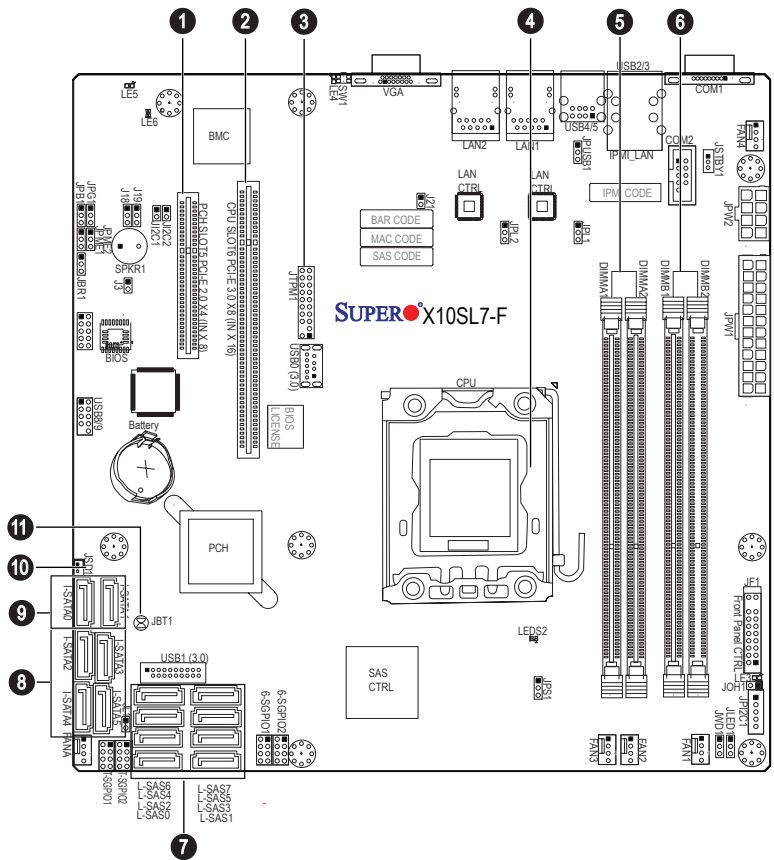


# SUPERMICR<sup>®</sup> SuperServer 1018D-73MTF Quick Reference Guide

## Board Layout

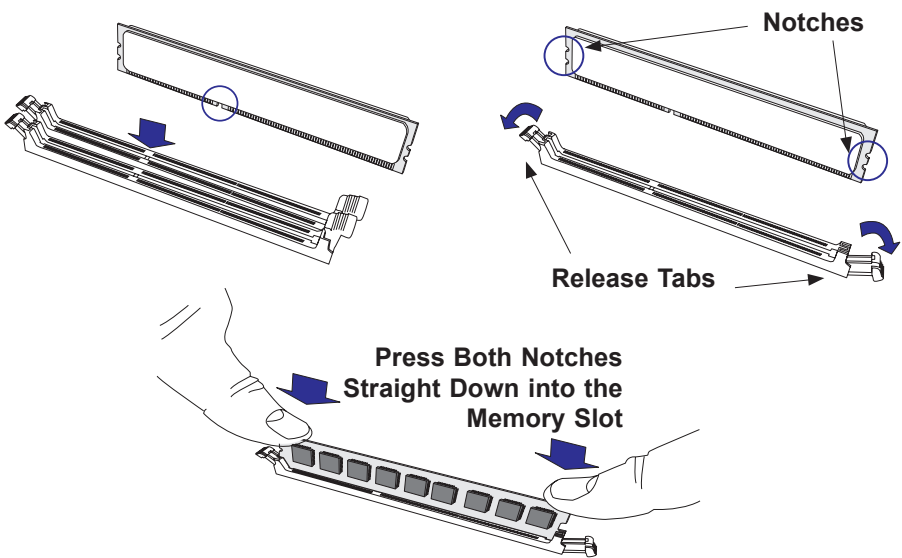
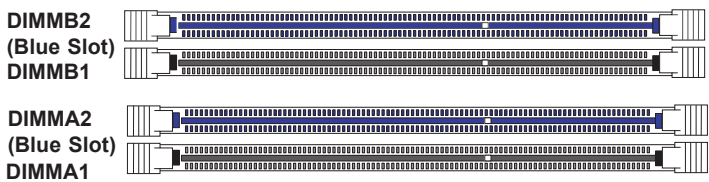


No.	Description
1	PCH Slot5 PCI-E 2.0 x4 (in x8)
2	CPU Slot6 PCI-E 2.0 x8 (in x16)
3	JTPM1 = Trusted Platform Module/Port 80 Connector
4	CPU
5	P1-DIMMA1 (BLUE)/P1-DIMMA2 slot
6	P1-DIMMB1 (BLUE)/P1-DIMMB2 slot
7	L-SAS 0-7: (L)-SAS Connector 0-7 (supported by the LSI 2308 SAS controller)
8	I-SATA 2-5: SATA 2.0 ports (3Gb/s)
9	I-SATA 0-1: SATA 3.0 ports (6Gb/s)
10	JBT1 = CMOS Reset
11	JSD1 = Disk On Module (DOM) Power

## MEMORY

DDR3 Unbuffered Non-ECC (UDIMM) Memory				
DIMM Slots per Channel	DIMMs Populated per Channel	DIMM Type	POR Speeds	Ranks per DIMM (any combination)
2	1	Unb. ECC DDR3	1066, 1333, 1600	Single Rank, Dual Rank
2	2	Unb.ECC DDR3	1066, 1333, 1600	Single Rank, Dual Rank

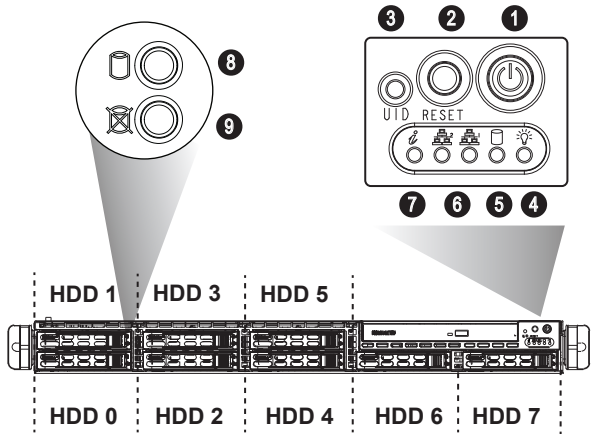
Populating these DIMM modules with a pair of memory modules of the same type and same size will result in interleaved memory, which will improve memory performance



## Beep Codes

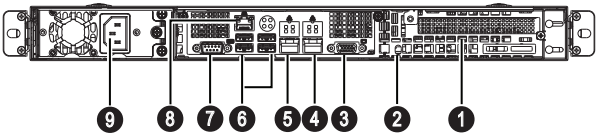
BIOS Beep Codes		
Beep Code/LED	Message	Description
1 beep	Refresh	Circuits have been reset. (Ready to power up)
5 short beeps + 1 long beep	Memory	No memory detected
5 long beeps	Display memory read/write status	Video adapter missing or with faulty memory
1 beep per device	Refresh	1 beep for each USB device
OH LED On	System	System overheat

## Front View & Interface



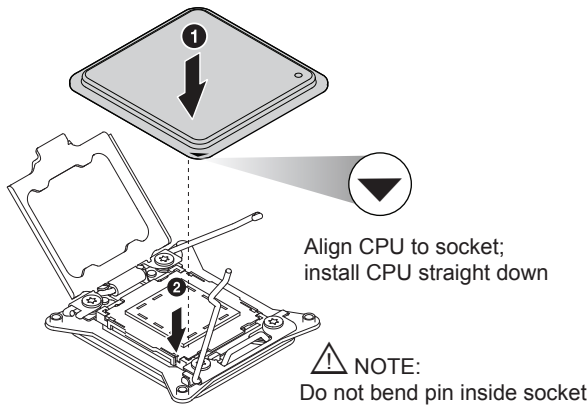
No.	Description
1	Power Button
2	Reset Button
3	UID Button
4	Power LED
5	Device Activity LED
6	LAN1 LED & LAN2 LED
7	Information LED
8	Hard Drive Signal
9	Hard Drive Fail

## Rear View

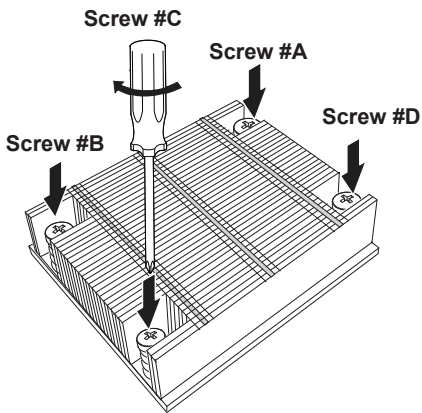


No.	Description
1	PCI-E Expansion Slot (w/riser card)
2	UID Button
3	VGA Port
4	GbE LAN2 Port
5	GbE LAN1 Port
6	USB 4/5/6/7 Ports
7	COM1 Port
8	Dedicated LAN for IPMI
9	Single Power Supply Module

## CPU Installation



## Heatsink Installation



- Place heatsink on top of installed CPU
- Line up the four screws to socket
- Push down heatsink and screw down as shown (cross pattern, in order: A, C, B, D)
- NOTE: Only use 6-8 lb/ft of torque; otherwise, hand-tighten each screw, to avoid damaging the system

## Caution

**SAFETY INFORMATION**  
IMPORTANT: See installation instructions and safety warning before connecting system to power supply.  
[http://www.supermicro.com/about/policies/safety\\_information.cfm](http://www.supermicro.com/about/policies/safety_information.cfm)

**WARNING:**  
To reduce risk of electric shock/damage to equipment, disconnect power from server by disconnecting all power cords from electrical outlets.  
If any CPU socket empty, install protective plastic CPU cap

**CAUTION:**  
Always be sure all power supplies for this system have the same power output. If mixed power supplies are installed, the system will not operate.

For more information go to :  
<http://www.supermicro.com/support>

