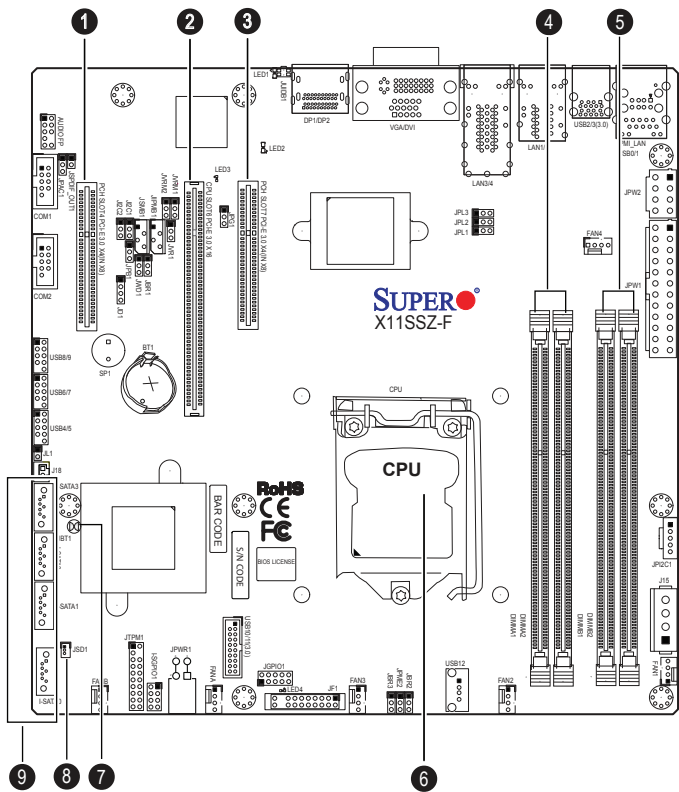


SUPERMICR[®] SuperServer 5019S-M2 Quick Reference Guide

Board Layout



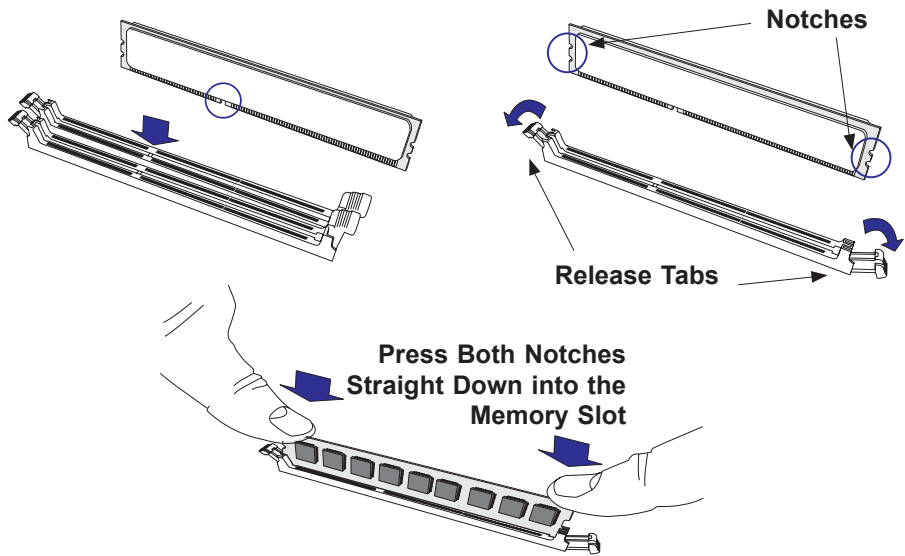
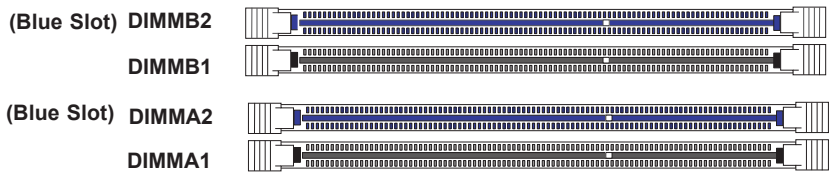
No.	Description
1	PCH Slot4 PCI-E 3.0 x4 (in x8) slot
2	CPU Slot6 PCI-E 3.0 x16 slot
3	PCH CPU Slot7 PCI-E 3.0 x4 (in x8) slot
4	DIMMA1/DIMMA2 (Blue Slot)
5	DIMMB1/DIMMB2 (Blue Slot)
6	CPU
7	JBT1 = CMOS Clear
8	JSD1: SATA DOM power connector
9	I-SATA 0~3: SATA 3.0 Connectors via Intel PCH (6Gb/s)

Memory

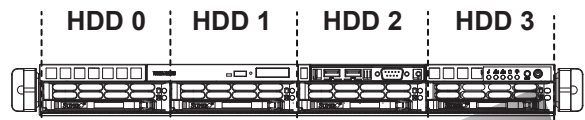
Memory Module Population						
DIMM Slots per Channel	DIMM Type	POR Speeds	Ranks per DIMM	Layer Count	FW Base	Supported Voltage
2	ECC/ non-ECC Unbuffered	2133, 1866, 1600, 1333	SR, DR	6	SPS	1.2V1

Memory Module Population		
Max Memory Possible	4GB DRAM Technology	POR Speeds
Single Rank UDIMM	16GB (4x 4GB DIMMs)	32GB (4x 8GB DIMMs)
Dual Rank UDIMM	32GB (4x 8GB DIMMs)	64GB (4x 16GB DIMMs)

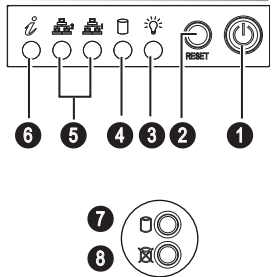
Populating these DIMM modules with a pair of memory modules of the same type and same size will result in interleaved memory, which will improve memory performance



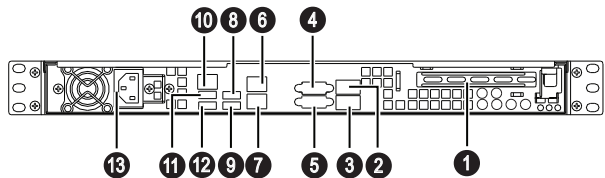
Front View & Interface



No.	Description
1	Power Button
2	Reset Button
3	Power LED
4	Device Activity LED
5	LAN1 LED & LAN2 LED
6	Information LED
7	Hard Drive Signal
8	Hard Drive Fail

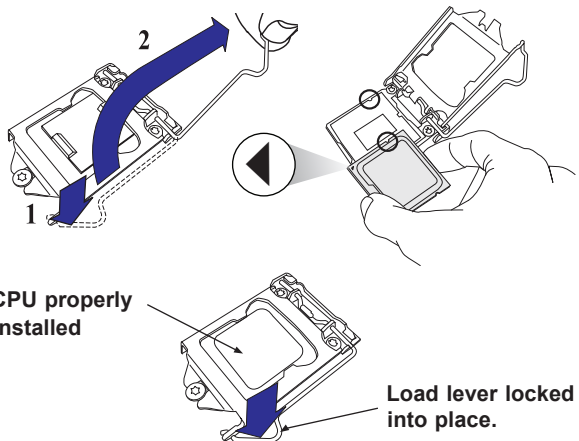


Rear View

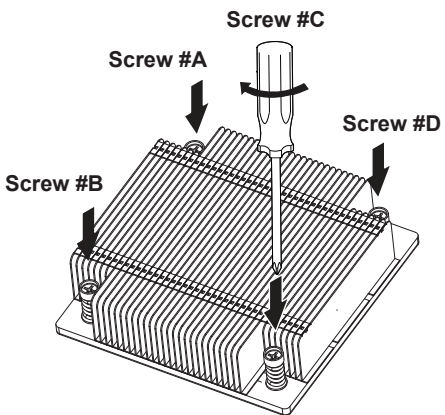


No.	Description
1	PCI-E Expansion Slot (w/riser card)
2	Display Port2
3	Display Port1
4	VGA Port
5	DVI Port
6	GbE LAN2 Port
7	GbE LAN1 Port
8	USB3 3.0 Port
9	USB2 3.0 Port
10	Dedicated LAN for IPMI
11	USB1 2.0 Port
12	USB0 2.0 Port
13	Single/Redundant Power Supply Module

CPU Installation



Heatsink Installation



1. Place heatsink on top of installed CPU
2. Line up the four screws to socket
3. Push down heatsink and screw down as shown (cross pattern, in order: A, C, B, D)
4. NOTE: Only use 6-8 lb/f of torque; otherwise, hand-tighten each screw, to avoid damaging the system

Caution

SAFETY INFORMATION
IMPORTANT: See installation instructions and safety warning before connecting system to power supply.
http://www.supermicro.com/about/policies/safety_information.cfm

WARNING:
To reduce risk of electric shock/damage to equipment, disconnect power from server by disconnecting all power cords from electrical outlets.
If any CPU socket empty, install protective plastic CPU cap

CAUTION:
Always be sure all power supplies for this system have the same power output. If mixed power supplies are installed, the system will not operate.

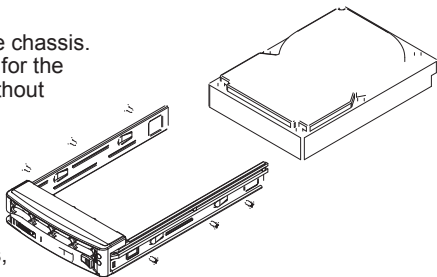
For more information go to :
<http://www.supermicro.com/support>

Serial ATA Drive Installation

Mounting a Drive in a Drive Carrier

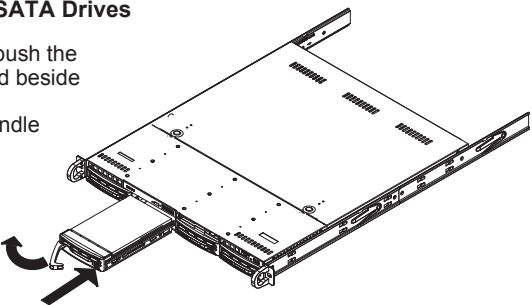
The SATA drives are mounted in drive carriers to simplify their installation and removal from the chassis. These carriers also help promote proper airflow for the system. For this reason, even empty carriers without drives installed must remain in the chassis.

1. Install a new drive into the carrier with the printed circuit board side facing down so that the mounting holes align with those in the carrier.
2. Secure the drive to the carrier with six screws, as shown.



Installing/Removing SATA Drives

1. To remove a carrier, push the release button located beside the drive LEDs.
2. Swing the colored handle fully and use it to pull the unit straight out.



Beep Code

BIOS Error Beep Codes		
Beep Code/LED	Error Message	Description
1 beep	Refresh	Circuits have been reset. (Ready to power up)
5 short beeps + 1 long beep	Memory error	No memory detected in the system
8 beeps	Display memory read/write error	Video adapter missing or with faulty memory
OH LED On	System OH	System Overheat

