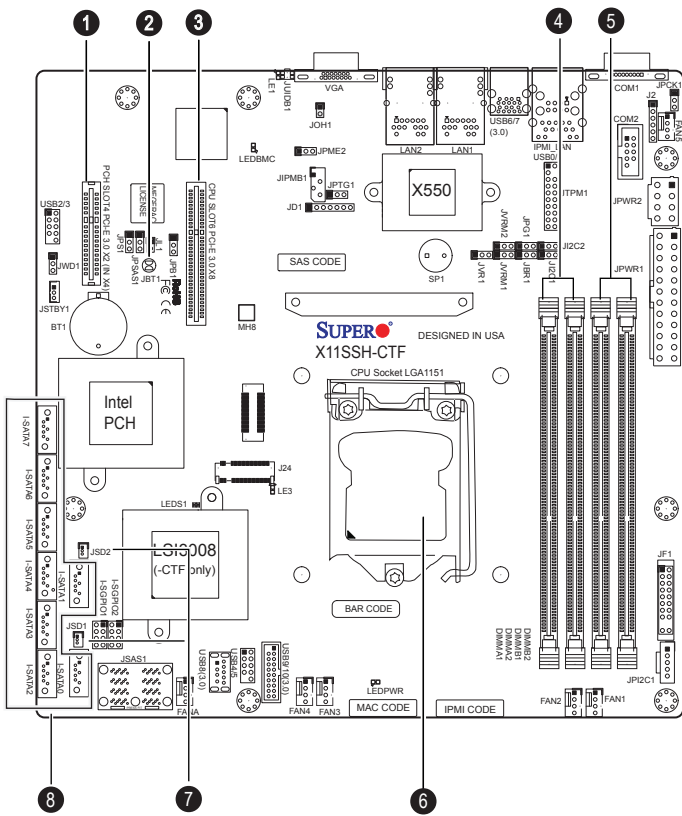


SUPERMICR[®] SuperServer 1019S-MC0T Quick Reference Guide

Board Layout



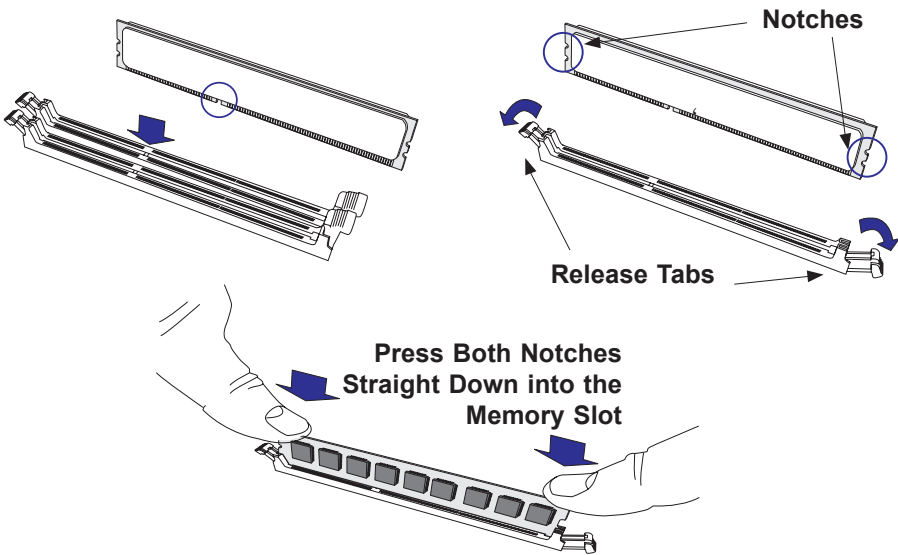
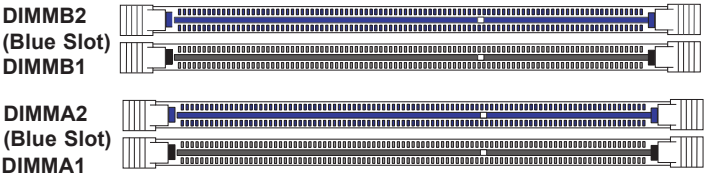
No.	Description
1	PCH Slot4 PCI-E 3.0 x2 (in x4) slot
2	JBT1 = CMOS Clear
3	CPU Slot6 PCI-E 3.0 x8 slot
4	DIMMA1/DIMMA2 (Blue Slot)
5	DIMMB1/DIMMB2 (Blue Slot)
6	CPU
7	JSD1 & JSD2: SATA DOM power connector
8	I-SATA 0-7: SATA 3.0 Connectors via Intel PCH (6Gb/s)

MEMORY

Memory Module Population						
DIMM Slots per Channel	DIMM Type	POR Speeds	Ranks per DIMM	Layer Count	FW Base	Supported Voltage
2	Unbuffered DDR4 ECC	2133, 1866, 1600, 1333	SR, DR	6	SPS	1.2V1

Memory Module Population		
Max Memory Possible	4GB DRAM Technology	POR Speeds
Single Rank UDIMM	16GB (4x 4GB DIMMs)	32GB (4x 8GB DIMMs)
Dual Rank UDIMM	32GB (4x 8GB DIMMs)	64GB (4x 16GB DIMMs)

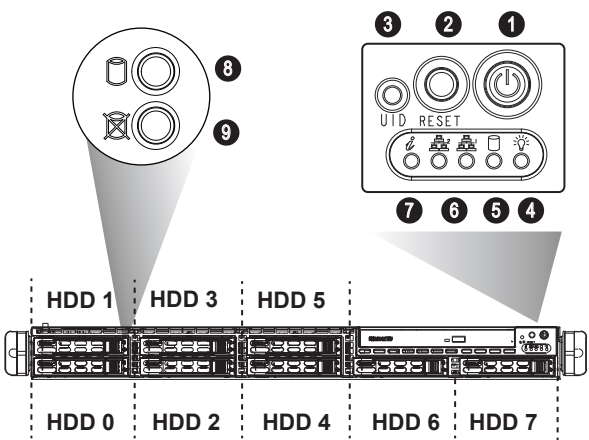
Populating these DIMM modules with a pair of memory modules of the same type and same size will result in interleaved memory, which will improve memory performance



Beep Codes

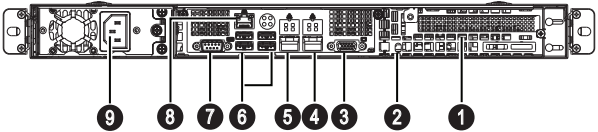
BIOS Beep Codes		
Beep Code/LED	Message	Description
1 beep	Refresh	Circuits have been reset. (Ready to power up)
5 short beeps + 1 long beep	Memory	No memory detected
5 long beeps	Display memory read/write status	Video adapter missing or with faulty memory
1 beep per device	Refresh	1 beep for each USB device
OH LED On	System	System overheat

Front View & Interface



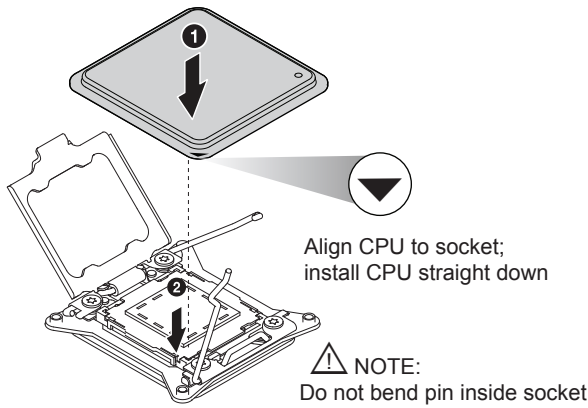
No.	Description
1	Power Button
2	Reset Button
3	UID Button
4	Power LED
5	Device Activity LED
6	LAN1 LED & LAN2 LED
7	Information LED
8	Hard Drive Signal
9	Hard Drive Fail

Rear View

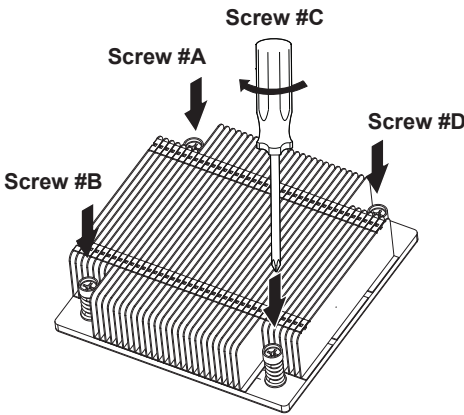


No.	Description
1	PCI-E Expansion Slot (w/riser card)
2	UID Button
3	VGA Port
4	10GbE LAN2 Port
5	10GbE LAN1 Port
6	USB 2/3 Ports
7	COM1 Port
8	Dedicated LAN for IPMI
9	Single Power Supply Module

CPU Installation



Heatsink Installation



- Place heatsink on top of installed CPU
- Line up the four screws to socket
- Push down heatsink and screw down as shown (cross pattern, in order: A, C, B, D)
- NOTE: Only use 6-8 lb/f of torque; otherwise, hand-tighten each screw, to avoid damaging the system

Caution

SAFETY INFORMATION
IMPORTANT: See installation instructions and safety warning before connecting system to power supply.
http://www.supermicro.com/about/policies/safety_information.cfm

WARNING:
To reduce risk of electric shock/damage to equipment, disconnect power from server by disconnecting all power cords from electrical outlets.
If any CPU socket empty, install protective plastic CPU cap

CAUTION:
Always be sure all power supplies for this system have the same power output. If mixed power supplies are installed, the system will not operate.

For more information go to :
<http://www.supermicro.com/support>

