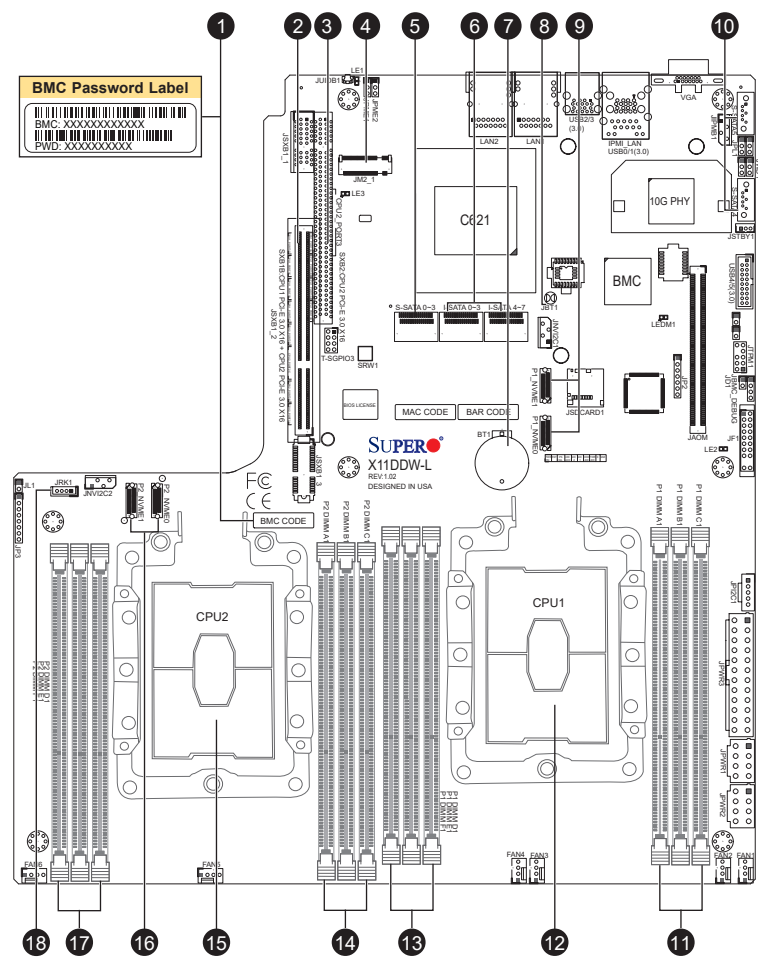


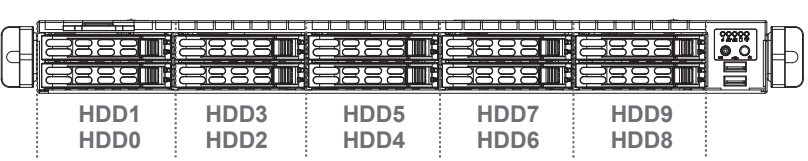
SUPERMICR SuperServer 1029P-WTRT Quick Reference Guide

Board Layout



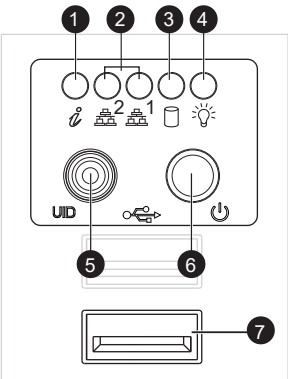
No.	Description
1	BMC Password Label
2	SXB1: PCI-E 3.0 (x16 + x16) Left Riser Card slot supported by CPU1 and CPU2
3	SXB2: PCI-E 3.0 x16 Right Riser Card slot supported by CPU2
4	M.2 (JM2_1, PCIe M.2 from PCH (Support NVMe M.2 only)
5	S-SATA 3.0 Ports (Intel SCU)
6	I-SATA0~3, I-SATA4~7: SATA 3.0 Ports (Intel PCH)
7	Onboard CMOS battery
8	JBT1: Clear CMOS
9	NVMe PCI-E 3.0 x4 ports (from CPU1)
10	S-SATA 4, 5: SATA 3.0 Ports
11	P1-DIMMC1/P1-DIMMB1/P1-DIMMA1 slot
12	CPU1
13	P1-DIMMD1/P1-DIMME1/P1-DIMMF1 slot
14	P2-DIMMC1/P2-DIMMB1/P2-DIMMA1 slot
15	CPU2
16	NVMe PCI-E 3.0 x4 ports (from CPU2)
17	P2-DIMMD1/P1-DIMME1/P1-DIMMF1 slot
18	JRK1: RAID Key for onboard NVMe devices

Front View and Features



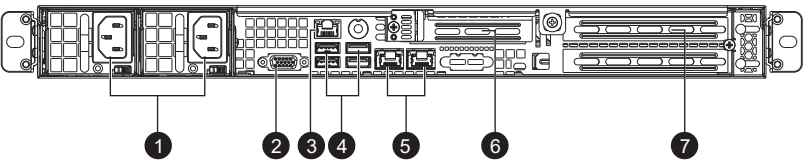
Slot	Description
0~7	2.5" Hot-Swap SATA3/SAS3* Drive Bays
8~9	2.5" Hot-Swap SATA3/SAS3*/NVMe(CPU1)** Drive Bays

* SAS3 support requires additional parts in optional parts list
** NVMe support requires additional parts in optional parts list



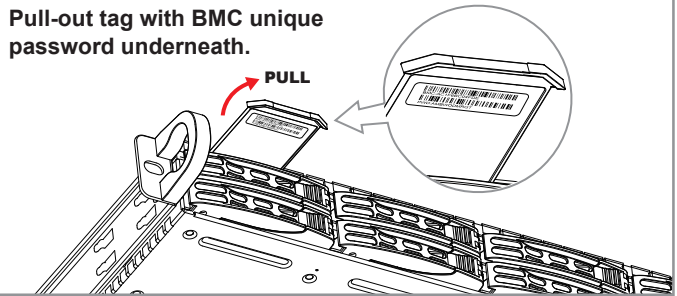
No.	Description
1	Universal Information LED
2	LAN1 LED & LAN2 LED
3	Device Activity LED
4	Power LED
5	UID Button
6	Power Button
7	USB 3.0
8	Device Activity LED
9	Device Status LED
10	Service/Asset Tag, Pull-out identifier (with BMC ADMIN default password underneath)

Rear View and Features



No.	Description
1	Redundant Power Supply Modules
2	VGA Port
3	Dedicated IPMI Port
4	USB 3.0 Ports
5	LAN Ports
6	PCI-E 3.0 x8 Expansion Slot (LP)
7	PCI-E 3.0 x16 Expansion Slot (FH, 6.6 inch L)

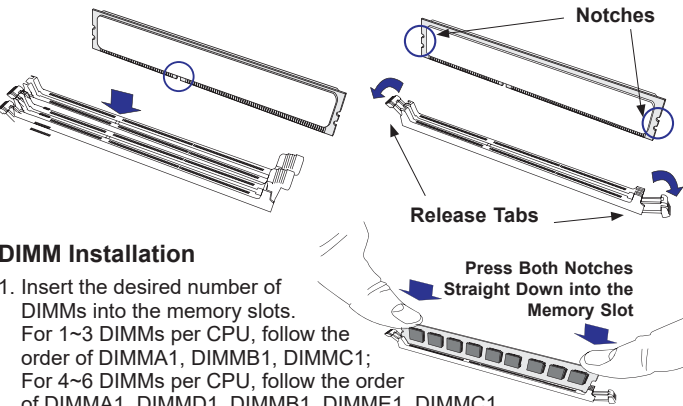
BMC Password Label



Each system comes with a unique default password for the ADMIN user. This can be found on a sticker on the motherboard and a sticker underneath the service tag on chassis. If necessary, the password can be reset by the Supermicro IPMICFG tool.

For more information, please visit <https://www.supermicro.com/en/solutions/management-software/bmc-resources>

Memory



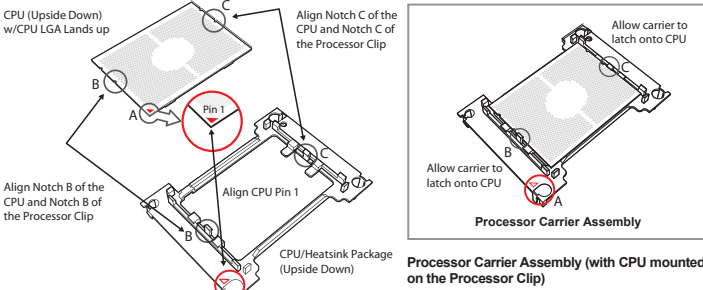
- DIMM Installation**
- Insert the desired number of DIMMs into the memory slots. For 1~3 DIMMs per CPU, follow the order of DIMMA1, DIMMB1, DIMMC1; For 4~6 DIMMs per CPU, follow the order of DIMMA1, DIMMD1, DIMMB1, DIMME1, DIMMC1, DIMMF1. For best performance, please use the memory modules of the same type and speed.
 - Push the release tabs outwards on both ends of the DIMM slot to unlock it.
 - Align the key of the DIMM module with the receptive point on the memory slot.
 - Align the notches on both ends of the module against the receptive points on the ends of the slot.
 - Use two thumbs together to press the notches on both ends of the module straight down into the slot until the module snaps into place.
 - Press the release tabs to the lock positions to secure the DIMM module into the slot.

Beep Code

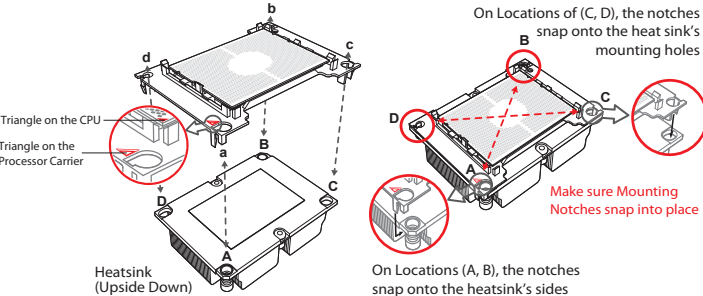
BIOS Beep (POST) Codes		
Beep Code	Error Message	Description
1 beep	Refresh	Circuits have been reset (Ready to power up)
5 short, 1 long	Memory error	No memory detected in the system
5 long, 2 short	Display memory read/write error	Video adapter missing or with faulty memory
1 long continuous	System OH	System overheat condition

CPU Installation

Supports Dual Intel Xeon Skylake and Cascade Lake Scalable Processors (LGA 3647) with a thermal design power (TDP) of up to 165W and 28 cores
Note: The X11DDW-L/NT motherboard does not support FPGA or Fabric processors.

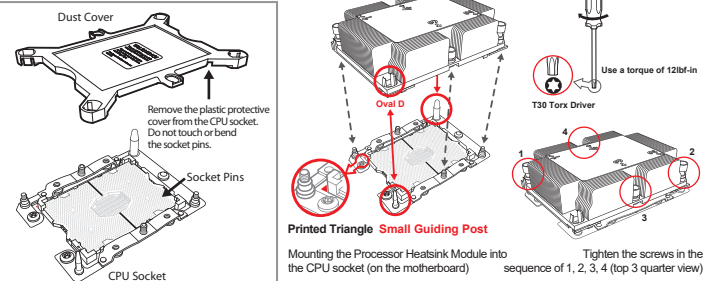


Attaching the Processor Carrier Assembly to the Heatsink to Form the Processor Heatsink Module (PHM)



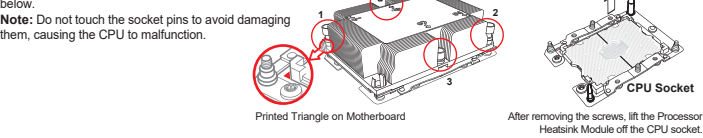
Removing the Dust Cover from the CPU Socket

Remove the dust cover from the CPU socket, exposing the socket and socket pins as shown on the illustration below.
Note: Do not touch the socket pins to avoid damaging them, causing the CPU to malfunction.



Removing the Processor Heatsink Module (PHM) from the Motherboard

Remove the dust cover from the CPU socket, exposing the socket and socket pins as shown on the illustration below.
Note: Do not touch the socket pins to avoid damaging them, causing the CPU to malfunction.



Caution

SAFETY INFORMATION
IMPORTANT: See installation instructions and safety warning before connecting system to power supply.
http://www.supermicro.com/about/policies/safety_information.cfm

WARNING:
To reduce risk of electric shock/damage to equipment, disconnect power from server by disconnecting all power cords from electrical outlets. If any CPU socket empty, install protective plastic CPU cap.

CAUTION:
Always be sure all power supplies for this system have the same power output. If mixed power supplies are installed, the system will not operate.
For more information go to: <http://www.supermicro.com/support>