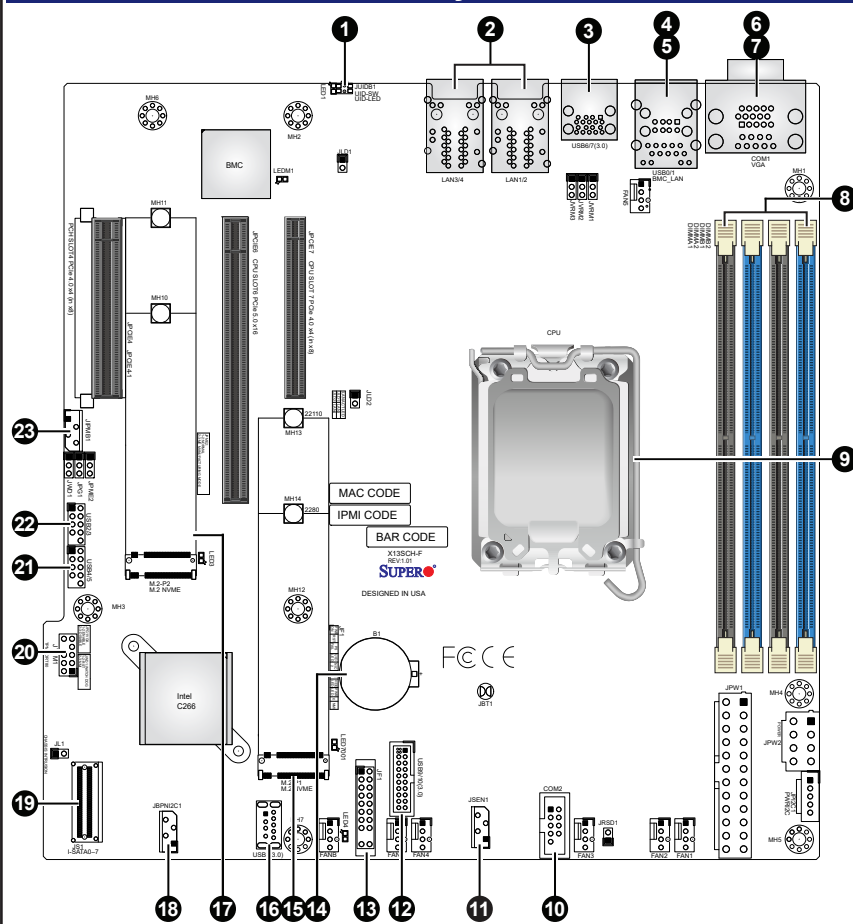


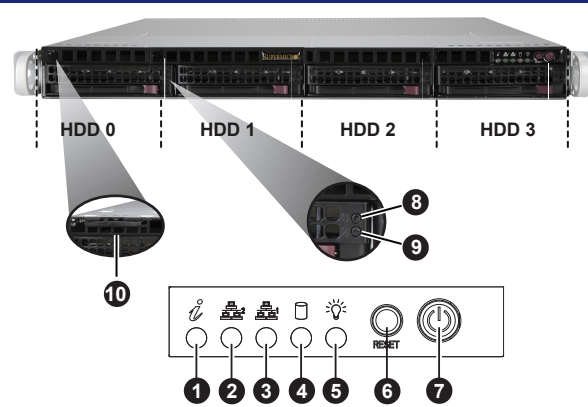
SUPERMICR[®] SuperServer 511R-M Quick Reference Guide

Board Layout



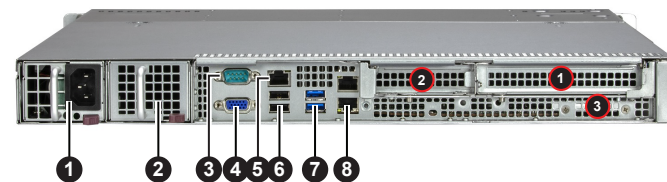
Item	Description	Item	Description
1	Button for UID LED and BMC Reset	13	Front Control Panel Header
2	Two 1GbE LAN Ports	14	Onboard CMOS Battery
3	USB 3.2 Gen 1 Ports	15	M.2 PCIe 4.0 Interface P1 (PCH)
4	Dedicated BMC LAN Port	16	USB 3.2 Gen 1 Type-A Port
5	USB 2.0 Ports	17	M.2 PCIe 4.0 Interface P2 (PCH)
6	COM Port (Serial Port)	18	4-pin BMC External I2C Header for BPN
7	VGA Port	19	I-SATA 0-7: SlimSAS SATA 3.0 Ports
8	DIMM A1-B2 Slots	20	TPM Header
9	CPU	21	USB4/5: USB 2.0 Headers
10	COM Port Header (Serial Port)	22	USB2/3: USB 2.0 Headers
11	Inlet Sensor Header	23	4-pin BMC External I2C Header for AOC
12	USB 3.2 Gen 1 Header		

Front View and Features



Control Panel Features	
Item	Description
1	Information LED
2	NIC2 LED
3	NIC1 LED
4	HDD LED
5	Power LED
6	Reset Button
7	Power Button
8	Drive Activity LED
9	Drive Status LED
10	Service/Asset Tag (pull-out identifier with BMC_ADMIN default password underneath)

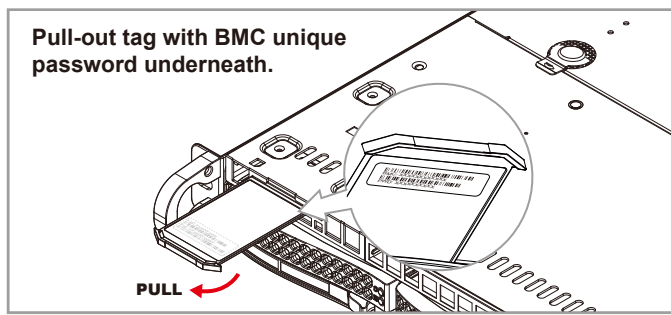
Rear View and Features



Item	Description
1	Single 600W Titanium-Level Power Supply
2	(Optional) Redundant Power
3	Serial Port
4	VGA Port
5	Dedicated BMC LAN Port
6	2 USB 2.0 Ports
7	2 USB 3.2 Gen 1 Ports
8	2 RJ45 1GbE Ports

Item	Slot Description
1	PCIe 5.0 x16 or PCIe 5.0 x8 FHHL
2	PCIe 5.0 x0 or PCIe 5.0 x8 LP
3	Dedicated Internal HBA Slot

BMC Password Label

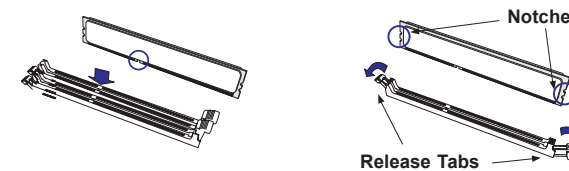


Each system comes with a unique default password for the ADMIN user. This can be found on a sticker on the motherboard and a sticker underneath the service tag on chassis. If necessary, the password can be reset by the Supermicro IPMICFG tool.

For more information, please visit <https://www.supermicro.com/en/solutions/management-software/bmc-resources>

Memory

DIMM Installation



When installing memory modules, the DIMM slots should be populated in the following order: DIMMB2 / DIMMA2 / DIMMB1 / DIMMA1.

- Always use DDR5 DIMM modules of the same type, size, and speed.
- Mixed DIMM speeds can be installed. However, all DIMMs will run at the speed of the slowest DIMM.
- The motherboard will support odd-numbered modules (1 or 3 modules) installed. However, to achieve the best memory performance, fully populate the motherboard with validated memory modules.

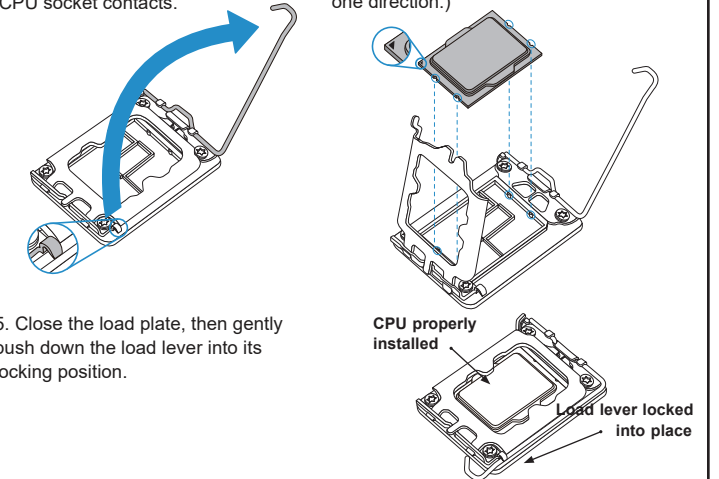
1 CPU, 4 DIMM Slots	
Number of DIMMs	Memory Population Sequence
1	DIMMB2
2	DIMMB2 / DIMMA2
3	(Unbalanced; not recommended)
4	DIMMB2 / DIMMA2 / DIMMB1 / DIMMA1

CPU Installation and Removal

Supports a single Intel Xeon E-2400 or Pentium Processor (LGA 1700)

Installing the LGA1700 Processor

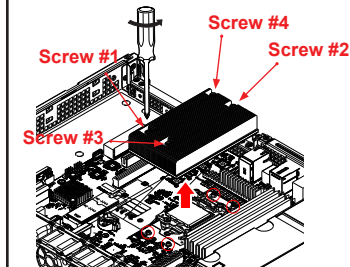
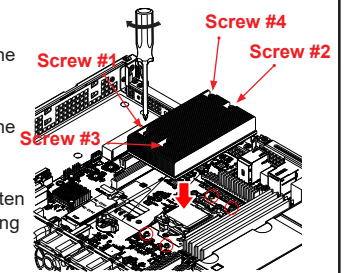
1. Press the load lever down to release the load plate from its locking position.
2. Gently lift the load lever to open the load plate. Remove the plastic protective cover. Do not touch the CPU socket contacts.
3. Align the Pin 1 triangle on the CPU with the Pin 1 triangle on the socket.
4. Carefully lower the CPU straight down into the socket. Inspect the four corners to make sure that the CPU is properly installed. (You can only install the CPU in one direction.)



5. Close the load plate, then gently push down the load lever into its locking position.

Installing a CPU Heatsink

1. Apply thermal grease to the heatsink or the CPU.
2. Align the four holes of the heatsink with the four mounting holes on the motherboard.
3. With a Phillips screwdriver, gradually tighten screws in the order of #1, #2, #3, #4, ensuring even pressure.



Removing the Heatsink

1. Unplug the power connector from the power supply.
2. Unscrew the heatsink screws in the sequence of #1, #2, #3, #4.
3. Gently lift the heatsink up and remove it from the CPU.

Caution

SAFETY INFORMATION
IMPORTANT: See installation instructions and safety warning before connecting system to power supply.
http://www.supermicro.com/about/policies/safety_information.cfm

WARNING:
To reduce risk of electric shock/damage to equipment, disconnect power from server by disconnecting all power cords from electrical outlets. If any CPU socket empty, install protective plastic CPU cap

WARNING:
Always be sure all power supplies for this system have the same power output. If mixed power supplies are installed, the system will not operate.

For more information go to : <http://www.supermicro.com/support>

