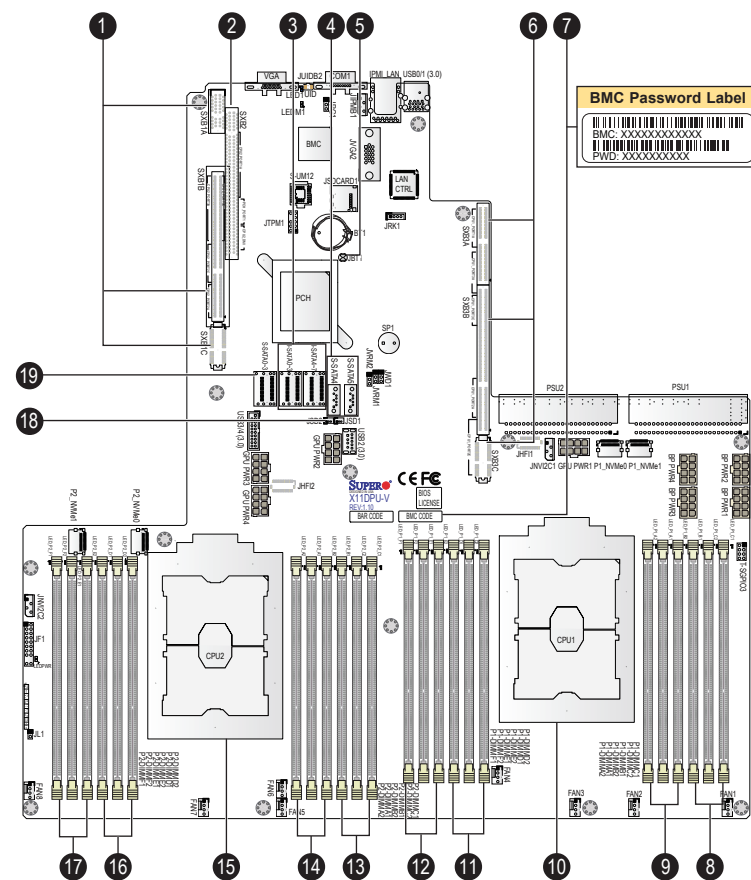


Board Layout



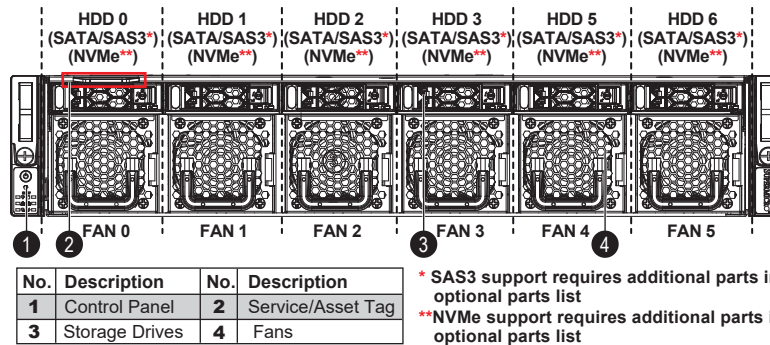
| No. | Description |
|-----|---|
| 1 | SXB1A/1B/1C: Proprietary PCI-e Slot used for WIO-Left Devices (supported by CPU2) |
| 2 | SXB2: Proprietary PCI-e Slot for WIO-Right Devices (supported by CPU2) |
| 3 | I-SATA0~3, I-SATA4~7: SATA 3.0 Ports (Intel PCH) |
| 4 | S-SATA 4, 5: SATA 3.0 Ports (Intel SCU) |
| 5 | JBT1: CMOS Clear |
| 6 | SXB3A/3B/3C: Proprietary PCI-e Slot for Ultra Riser Devices (supported by CPU1) |
| 7 | BMC Password Label |
| 8 | P1-DIMMC1(Blue)/P1-DIMMC2/P1-DIMMB1(Blue) slot |
| 9 | P1-DIMMB2/P1-DIMMA1(Blue)/P1-DIMMA2 slot |
| 10 | CPU1 (Install CPU1 first) |
| 11 | P1-DIMMD2/P1-DIMMD1(Blue)/P1-DIMME2 slot |
| 12 | P1-DIMME1(Blue)/P1-DIMMF2/P1-DIMMF1(Blue) slot |
| 13 | P2-DIMMC1(Blue)/P2-DIMMC2/P2-DIMMB1(Blue) slot |
| 14 | P2-DIMMB2/P2-DIMMA1(Blue)/P2-DIMMA2 slot |
| 15 | CPU2 |
| 16 | P2-DIMMD2/P2-DIMMD1(Blue)/P2-DIMME2 slot |
| 17 | P2-DIMME1(Blue)/P2-DIMMF2/P2-DIMMF1(Blue) slot |
| 18 | JSD1/JSD2: SATA DOM (Device_on_Module) Power Connectors |
| 19 | S-SATA0~3: SATA 3.0 Ports (Intel SCU) |

Memory Support

Memory Population Table

| When 2 CPUs are used | Memory Population Sequence |
|---|--|
| 2 CPUs & 2 DIMMs | CPU1: P1-DIMMA1 CPU2: P2-DIMMA1 |
| 2 CPUs & 4 DIMMs | CPU1: P1-DIMMA1/P1-DIMMD1 CPU2: P2-DIMMA1/P2-DIMMD1 |
| 2 CPUs & 6 DIMMs | CPU1: P1-DIMMC1/P1-DIMMB1/P1-DIMMA1 CPU2: P2-DIMMC1/P2-DIMMB1/P2-DIMMA1 |
| 2 CPUs & 8 DIMMs | CPU1: P1-DIMMB1/P1-DIMMA1/P1-DIMMD1/P1-DIMME1 CPU2: P2-DIMMB1/P2-DIMMA1/P2-DIMMD1/P2-DIMME1 |
| 2 CPUs & 10 DIMMs | CPU1: P1-DIMMC1/P1-DIMMB1/P1-DIMMA1/P1-DIMMD1/P1-DIMME1/P1-DIMMF1 CPU2: P2-DIMMC1/P2-DIMMB1/P2-DIMMA1/P2-DIMMD1/P2-DIMME1 |
| 2 CPUs & 12 DIMMs | CPU1: P1-DIMMC1/P1-DIMMB1/P1-DIMMA1/P1-DIMMD1/P1-DIMME1/P1-DIMMF1 CPU2: P2-DIMMC1/P2-DIMMB1/P2-DIMMA1/P2-DIMMD1/P2-DIMME1/P2-DIMMF1 |
| 2 CPUs & 14 DIMMs | CPU1: P1-DIMMB1/P1-DIMMB2/P1-DIMMA1/P1-DIMMA2/P1-DIMMD2/P1-DIMMD1/P1-DIMME2/P1-DIMME1 CPU2: P2-DIMMC1/P2-DIMMB1/P2-DIMMA1/P2-DIMMD1/P2-DIMME1/P2-DIMMF1 |
| 2 CPUs & 16 DIMMs | CPU1: P1-DIMMB1/P1-DIMMB2/P1-DIMMA1/P1-DIMMA2/P1-DIMMD2/P1-DIMMD1/P1-DIMME2/P1-DIMME1 CPU2: P2-DIMMB1/P2-DIMMB2/P2-DIMMA1/P2-DIMMA2/P2-DIMMD2/P2-DIMMD1/P2-DIMME2/P2-DIMME1 |
| 2 CPUs & 18 DIMMs | CPU1: P1-DIMMC1/P1-DIMMC2/P1-DIMMB1/P1-DIMMB2/P1-DIMMA1/P1-DIMMA2/P1-DIMMD2/P1-DIMMD1/ P1-DIMME2/P1-DIMME1/P1-DIMMF2/P1-DIMMF1 CPU2: P2-DIMMC1/P2-DIMMC2/P2-DIMMB1/P2-DIMMB2/P2-DIMMA1/P2-DIMMA2/P2-DIMMD2/P2-DIMMD1/ P2-DIMME2/P2-DIMME1/P2-DIMMF2/P2-DIMMF1 |
| 2 CPUs & 20 DIMMs | CPU1: P1-DIMMC1/P1-DIMMC2/P1-DIMMB1/P1-DIMMB2/P1-DIMMA1/P1-DIMMA2/P1-DIMMD2/P1-DIMMD1/ P1-DIMME2/P1-DIMME1/P1-DIMMF2/P1-DIMMF1 CPU2: P2-DIMMC1/P2-DIMMC2/P2-DIMMB1/P2-DIMMB2/P2-DIMMA1/P2-DIMMA2/P2-DIMMD2/P2-DIMMD1/ P2-DIMME2/P2-DIMME1/P2-DIMMF2/P2-DIMMF1 |
| 2 CPUs & 22 DIMMs (Unbalanced: not recommended) | CPU1: P1-DIMMC1/P1-DIMMC2/P1-DIMMB1/P1-DIMMB2/P1-DIMMA1/P1-DIMMA2/P1-DIMMD2/P1-DIMMD1/ P1-DIMME2/P1-DIMME1/P1-DIMMF2/P1-DIMMF1 CPU2: P2-DIMMC1/P2-DIMMC2/P2-DIMMB1/P2-DIMMB2/P2-DIMMA1/P2-DIMMA2/P2-DIMMD2/P2-DIMMD1/ P2-DIMME2/P2-DIMME1/P2-DIMMF2/P2-DIMMF1 |
| 2 CPUs & 24 DIMMs | CPU1: P1-DIMMC1/P1-DIMMC2/P1-DIMMB1/P1-DIMMB2/P1-DIMMA1/P1-DIMMA2/P1-DIMMD2/P1-DIMMD1/ P1-DIMME2/P1-DIMME1/P1-DIMMF2/P1-DIMMF1 CPU2: P2-DIMMC1/P2-DIMMC2/P2-DIMMB1/P2-DIMMB2/P2-DIMMA1/P2-DIMMA2/P2-DIMMD2/P2-DIMMD1/ P2-DIMME2/P2-DIMME1/P2-DIMMF2/P2-DIMMF1 |

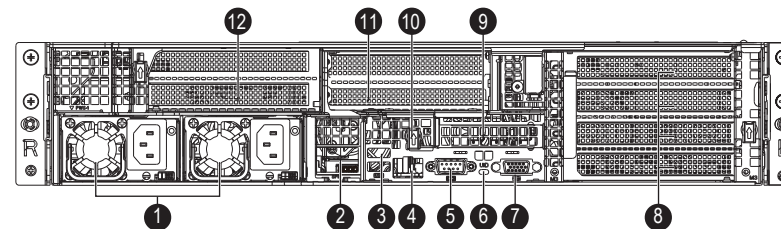
Front view



Control Panel

| Item | Features | Description |
|------|-----------------|---|
| 1 | Power button | The main power switch applies or removes primary power from the power supply to the server but maintains standby power. |
| 2 | Reset Button | System reset button |
| 3 | Power LED | Indicates power is being supplied to the system power supply units. |
| 4 | HDD LED | Indicates hard disk drive activity when flashing. |
| 5 | NIC LED | Indicates network activity on the LAN when flashing. |
| 6 | Information LED | Alerts operator to several states, as noted in the table on the next page. |
| 7 | Overheat LED | If this indicator is continuously on and red, an overheat condition has occurred. |

Rear View



Chassis Rear Features

| Item | Features | Description | Item | Features | Description |
|------|--------------|--|------|----------|--|
| 1 | Power Supply | Two redundant power supply modules, PWS1 on the left, PWS2 on the right | 7 | VGA | Video port |
| 2 | LAN | Two or four LAN ports, depending on your Ultra riser card (see Section 1.1 Overview for details; also see LAN numbering description below) | 8 | PCI | PCI-E 3.0 x8 Slot (FH, 10.5"L) |
| 3 | USB | Two USB 3.0 ports | 9 | PCI | PCI-E 3.0 x8 LP Slot |
| 4 | IPMI LAN | Dedicated LAN port for IPMI | 10 | PCI | PCI-E 3.0 x8 Internal LP Slot |
| 5 | COM | Serial port | 11 | PCI | PCI-E 3.0 x8 Slot (FH, 10.5"L) Or 2x 2.5" Hot-Swap Drive Bay |
| 6 | UID | UID indicator and button to toggle the UID indicators | 12 | PCI | PCI-E 3.0 x8 LP Slot |

Beep Codes

| Beep Code | Error Message | Description |
|-------------------|---------------------------------|--|
| 1 short | Refresh | Circuits have been reset (Ready to power up) |
| 5 short, 1 long | Memory error | No memory detected in system |
| 5 long, 2 short | Display memory read/write error | Video adapter missing or with faulty memory |
| 1 long continuous | System OH | System overheat condition |

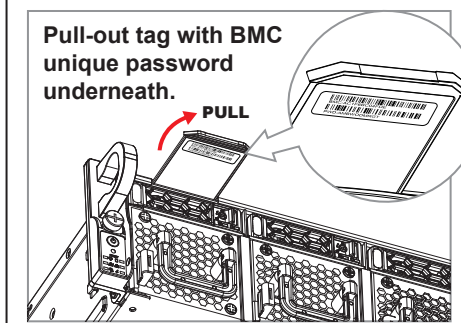
Caution

SAFETY INFORMATION
IMPORTANT: See installation instructions and safety warning before connecting system to power supply.
http://www.supermicro.com/about/policies/safety_information.cfm

WARNING:
To reduce risk of electric shock/damage to equipment, disconnect power from server by disconnecting all power cords from electrical outlets. If any CPU socket empty, install protective plastic CPU cap.

CAUTION:
Always be sure all power supplies for this system have the same power output. If mixed power supplies are installed, the system will not operate. For more information go to: <http://www.supermicro.com/support>

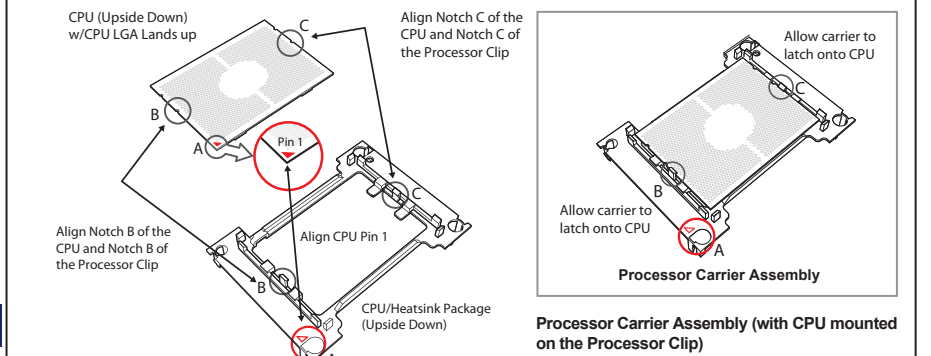
BMC Password Label



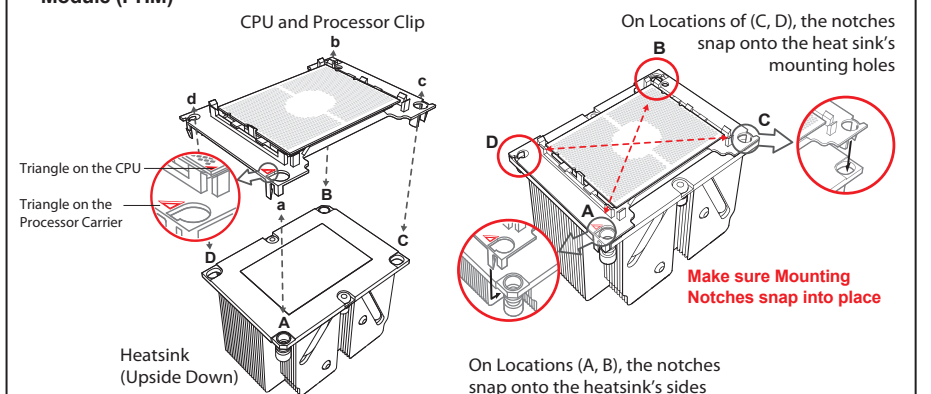
Each system comes with a unique default password for the ADMIN user. This can be found on a sticker on the motherboard and a sticker underneath the service tag on chassis. If necessary, the password can be reset by the Supermicro IPMICFG tool.

For more information, please visit <https://www.supermicro.com/en/solutions/management-software/bmc-resources>

CPU Installation



Attaching the Processor Carrier Assembly to the Heatsink to Form the Processor Heatsink Module (PHM)



Removing the Dust Cover from the CPU Socket

Remove the dust cover from the CPU socket, exposing the socket and socket pins as shown on the illustration below. **Note:** Do not touch the socket pins to avoid damaging them, causing the CPU to malfunction.

