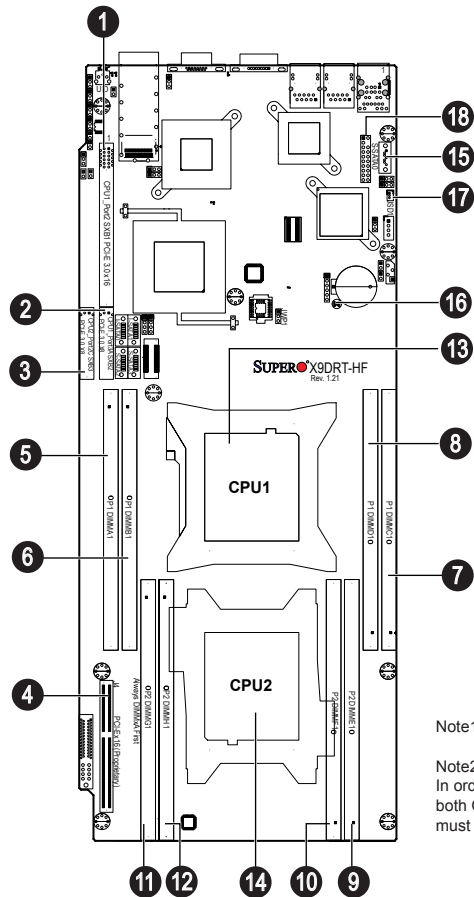


SUPERMICR[®] SuperServer 6027TR-D71RF/D71QRF/D71FRF Quick Reference Guide

Board Layout



Note1: Install CPU1 first

Note2:
In order to support SAS
both CPU sockets
must be populated.

No.	Description
1	CPU1_Port2 SXB1 PCI-E 3.0 x16 slot for Low-Profile Add-on Card
2	CPU1_Port3A SXB2 PCI-E 3.0 x8 slot
3	CPU2_Port2C SXB3 PCI-E 3.0 x8 slot for SMB-Proprietary (Daughter) Card LSI 2108
4	PCI-E x16 Proprietary
5	P1-DIMMA1
6	P1-DIMMB1
7	P1-DIMMC1
8	P1-DIMMD1
9	P2-DIMME1
10	P2-DIMMF1
11	P2-DIMMG1
12	P2-DIMMH1
13	CPU1 (Install CPU1 first)
14	CPU2
15	SATA 0/1 Connectors
16	JBT1 = CMOS Reset
17	JDS1= SATA DOM Power
18	TPM Header

MEMORY

Processors and their Corresponding Memory Modules				
CPU#	Corresponding DIMM Modules			
CPU 1	P1-DIMMA1	P1-DIMMB1	P1-DIMMC1	P1-DIMMD1
CPU2	P2-DIMME1	P2-DIMMF1	P2-DIMMG1	P2-DIMMH1

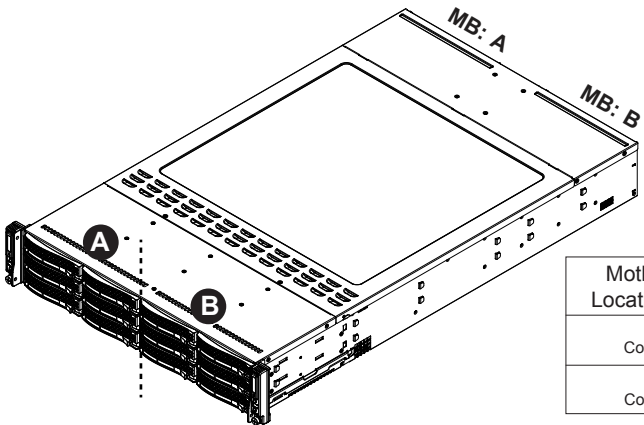
Processor and Memory Module Population	
Number of CPUs+DIMMs	CPU and Memory Population Configuration Table (*For memory to work proper, please install DIMMs in pairs)
1 CPU & 2 DIMMs	CPU1 P1-DIMMA1/P1-DIMMB1
1 CPU & 4 DIMMs	CPU1 P1-DIMMA1/P1-DIMMB1, P1-DIMMC1/P1-DIMMD1
2 CPUs & 4 DIMMs	CPU1 + CPU2 P1-DIMMA1/P1-DIMMB1, P2-DIMME1/P2-DIMMF1
2 CPUs & 6 DIMMs	CPU1 + CPU2 P1-DIMMA1/P1-DIMMB1, P2-DIMME1/P2-DIMMF1, P1-DIMMC1/P1-DIMMD1
2 CPUs & 8 DIMMs	CPU1/CPU2 P1-DIMMA1/P1-DIMMB1, P2-DIMME1/P2-DIMMF1, P1-DIMMC1/P1-DIMMD1, P2-DIMMG1/P2-DIMMH1

UDIMM Support on the E5-2600 Series Processor Platform			
DIMMs Populated per DDR Channel	UDIMM Type (Unb. DIMM)	POR Speeds (in MHz)	Ranks per DIMM (Any Combination)
1	ECC/Non-ECC DDR3	1066, 1333	SR, DR

RDIMM Support on the E5-2600 Series Processor Platform			
DIMMs Populated per DDR Channel	RDIMM Type (Reg. DIMM)	POR Speeds (in MHz)	Ranks per DIMM (Any Combination)
1	Reg. ECC DDR3	1066, 1333, 1600	SR, DR

LRDIMM Support on the E5-2600 Series Processor Platform			
DIMMs Populated per DDR Channel	LRDIMM Type (Load Reduced DIMM)	POR Speeds (in MHz)	Ranks per DIMM (Any Combination)
1	LR ECC DDR3	1066, 1333	QR

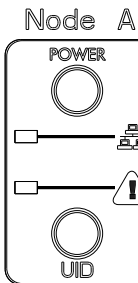
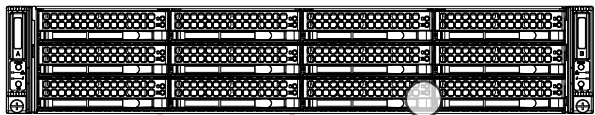
Installing and Removing Hard Drives



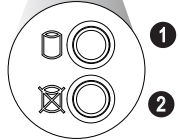
Motherboard Drawer Locations in the Chassis	
Motherboard B	Controls HDDs B1 to B6
Motherboard A	Controls HDDs A1 to A6

Note: In order to support the LSI RAID controller, both CPU sockets must be populated.

Front view & Interface

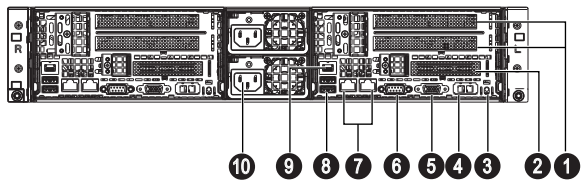


3
4
5
6



No.	Description
1	Hard Drive Signal
2	Hard Drive Fail
3	Power Button
4	LAN LED
5	Alert
6	UID

Rear View

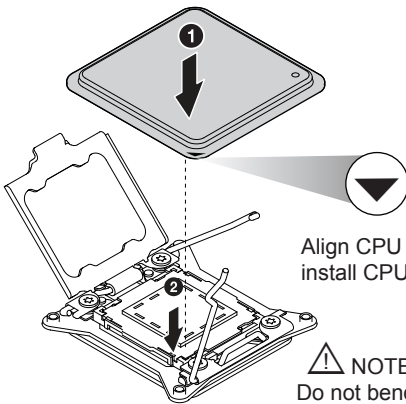


No.	Description
1	Full-height & half-length Slots
2	Low-profile Slot
3	UID Button
4	QSFP Port (2027TR-D70QRF/D70FRF only)
5	VGA Port
6	COM Port
7	LAN1/LAN2 Ports
8	USB Ports
9	Dedicated LAN for IPMI
10	Power Supply Module

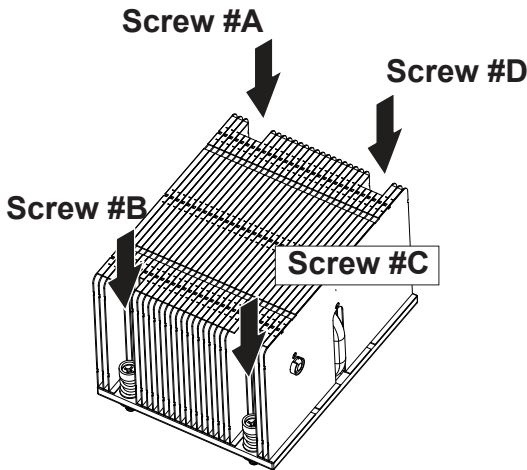
Beep Codes

BIOS Beep Codes		
Beep Code/LED	Message	Description
1 beep	Refresh	Circuits have been reset. (Ready to power up)
5 short beeps + 1 long beep	Memory	No memory detected
5 long beeps + 2 short beeps	Display memory read/write status	Video adapter missing or with faulty memory
1 continuous beep	System	System overheat

CPU Installation



Heatsink Installation



1. Place heatsink on top of installed CPU
2. Line up the four screws to socket
3. Push down heatsink and screw down as shown (cross pattern, in order: A, C, B, D)
4. NOTE: Only use 6-8 lb/f of torque; otherwise, hand-tighten each screw, to avoid damaging the system

Caution

SAFETY INFORMATION
IMPORTANT: See installation instructions and safety warning before connecting system to power supply.
http://www.supermicro.com/about/policies/safety_information.cfm

WARNING
To reduce risk of electric shock/damage to equipment, disconnect power from server by disconnecting all power cords from electrical outlets.
If any CPU socket empty, install protective plastic CPU cap

CAUTION
Always be sure all power supplies for this system have the same power output. If mixed power supplies are installed, the system will not operate.

For more information go to :
<http://www.supermicro.com/support>

