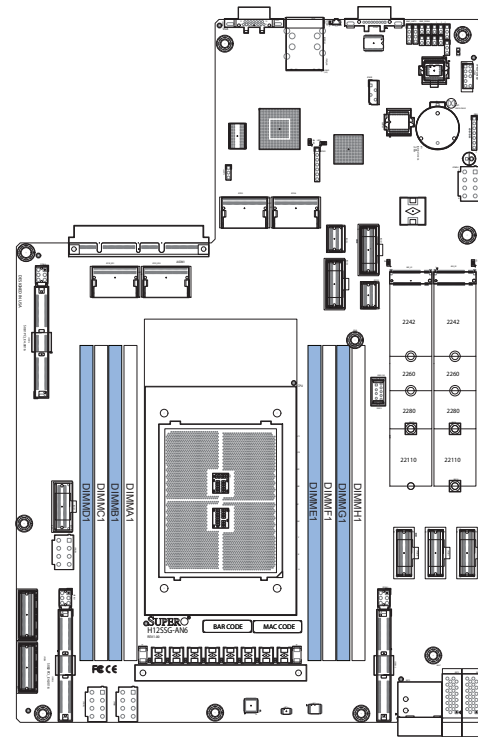


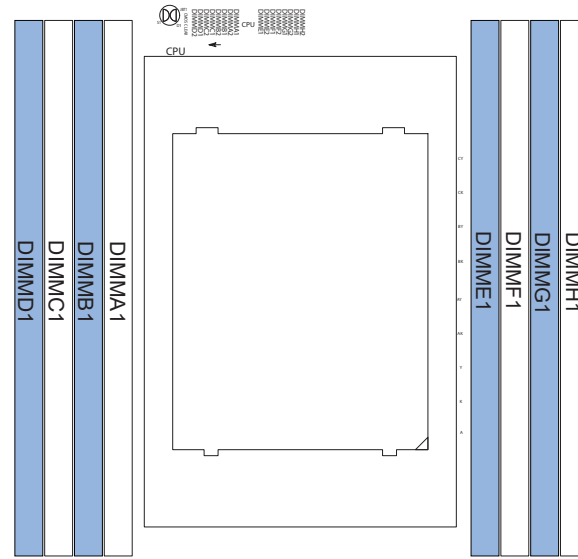
SUPERMICR[®] A+ Server 2114GT-DNR Quick Reference Guide

Board Layout



	Description	Default Setting
JBT1	Clear CMOS	Open (Normal)
JWD1	Watch Dog control	Pins 1-2 (Reset)
Connector	Description	
AIOM1	Advanced I/O Module (AIOM) networking slot	
Battery (BT1)	Onboard CMOS battery	
COM1	Rear panel COM port #1	
IPMI LAN	RJ45 dedicated IPMI LAN port	
JIPMB1	BMC external I ² C header	
JM2_A1/JM2_B1	M.2 device slots	
JMP1/2/3	Connector for SCC-P2N2FG-P1A-B or SCC-P2N2FG-P1A-A	
JPC_ED1/ED2/ED3	PCIe 4.0 x8 SlimSAS connectors	
JPCIE1, JPCIE4-11	PCIe 4.0 x8 SlimSAS connectors	
JPCIE2, JPCIE3	PCIe 4.0 x4 SlimSAS connectors	
JSXB1	PCIe 4.0 x16 slot	
JSXB2	PCIe 4.0 x16 slot	
JSXB3	PCIe 4.0 x16 slot	
JPWR1-4	GPU 12V 8-pin power connector	
JTPM2	Trusted Platform Module (TPM)/Port 80 connector	
UID_SW	UID switch (push-button to toggle UID on/off)	
USB0/1	Rear USB 3.1 ports	
USB13	Internal USB 2.0 header	
VGA	VGA port	

Memory



DIMM Module Population

There is no specific order or sequence required when installing memory modules. However do keep the following in mind:

- Mixed DIMM speeds can be installed. However, all DIMMs will run at the speed of the slowest DIMM.
- The motherboard will support odd-numbered modules (1 or 3 modules installed). However, to achieve the best memory performance, a balanced memory population is recommended.

Type	DIMM Population	Maximum DIMM Capacity (GB)		Maximum Frequency (MHz)
		1 Channel	8 Channels	
RDIMM	1R (1 Rank)	32GB	256GB	3200
	2R or 2DR (2 Ranks)	64GB	512GB	3200
LRDIMM dual die	4DR (4 Ranks)	128GB	1TB	3200
	2S2R (4 Ranks)	128GB	1TB	3200
3DS LRDIMM	2S4R (8 Ranks)	256GB	2TB	3200
	2S2R (4 Ranks)	128GB	1TB	3200
3DS RDIMM	2S4R (8 Ranks)	256GB	2TB	3200
	2S2R (4 Ranks)	128GB	2TB	3200

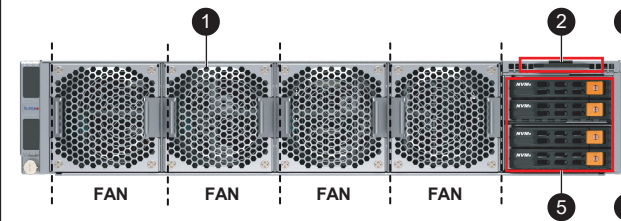
DIMM Population Guide (with AMD 7002 Processor)

CPU#	Channel							
	D1	C1	B1	A1	E1	F1	G1	H1
1 DIMM (supported but not recommended)								
CPU1	X							
2 DIMMs (supported but not recommended)								
CPU1	X	X						
4 DIMMs (conditionally recommended if 32 cores or fewer)								
CPU1	X	X				X	X	
6 DIMMs								
CPU1	X	X		X	X		X	X
Unbalanced (Not Recommended)								
8 DIMMs								
CPU1	X	X	X	X	X	X	X	X

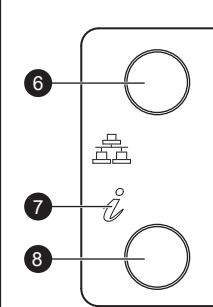
DIMM Population Guide (with AMD 7003 Processor)

CPU#	Channel							
	D1	C1	B1	A1	E1	F1	G1	H1
1 DIMM (supported but not recommended)								
CPU1	X							
2 DIMMs (supported but not recommended)								
CPU1	X	X						
4 DIMMs (conditionally recommended if 32 cores or fewer)								
CPU1	X	X				X	X	
6 DIMMs (conditionally recommended if only populating 6 slots)								
CPU1	X	X		X	X		X	X
8 DIMMs								
CPU1	X	X	X	X	X	X	X	X

Front View & Interface

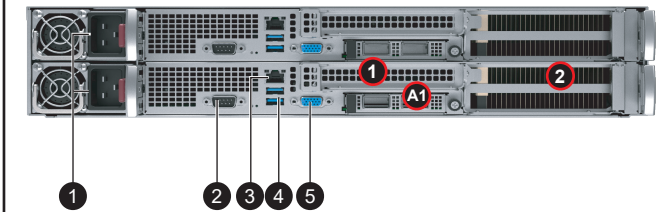


Slot	Description
0-1	2x Hot-swap PCI-E Gen4 x4 U.2 NVMe Drive Bays



No.	Description
1	4x Hot-swap 8cm External Fans
2	Pull-out Tag
3	Control Panel (Node B)
4	Control Panel (Node A)
5	0 - 1 Hard Drives
6	Power button
7	Information LED
8	UID button/LED (Node A)

Rear View



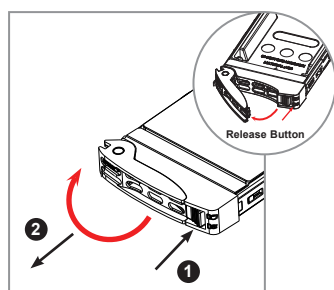
No.	Description
1	Redundant power supply modules
2	COM Ports
3	VGA Ports
4	USB 3.0 ports
5	BMC LAN Ports
1	PCIe 4.0 x16 FHHL
2	PCIe 4.0 x16 FHFL
A1	AIOM / OCP3.0 slot PCIe 4.0 x8

CPU Installation

Processor Installation

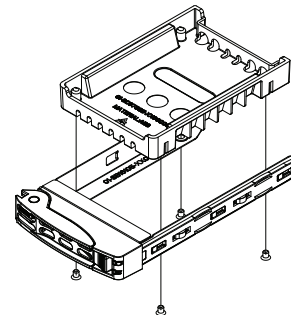
- Removing the Processor Force Frame**
Use a Torx T20 driver to loosen the screws holding down Force Frame in the sequence of 3-2-1. The screws are numbered on the Force Frame next to each screw hole.
- Raising the Force Frame**
- Lifting the Rail Frame**
- Removing the External Cap and PnP Cover Cap**
- Inserting the Carrier Frame/CPU Package**
- Lowering the Force Frame**
- Securing the Force Frame**
Secure the screws in the order 1-2-3, tightening to 16.1 kgf-cm (14 lbf-in) of torque. The Force Frame secures both the Rail Frame and CPU Package. Caution: Tightening must be executed in proper 1-2-3 sequence to avoid causing catastrophic damage to the socket or CPU Package.
- The Force Frame Secured**

Hard Drive Installation



Removing a Hot-Swap Drive Carrier from the Chassis

- Press the release button on the drive carrier, which will extend the drive carrier handle.
- Use the drive carrier handle to pull the drive out of the chassis.

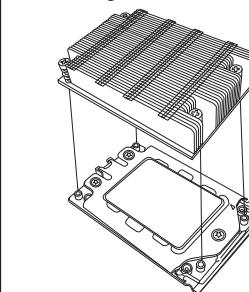


Installing a Drive

- Remove the dummy drive, by removing the screws securing the dummy drive to the carrier. These screws are not used to mount the actual hard drive.
- Insert a drive into the carrier with the PCB side facing down and the connector end toward the rear of the carrier. Align the drive in the carrier so that the screw holes line up.
- Secure the drive to the carrier with four M3 screws, included in the chassis accessory box.
- Insert the drive carrier with the disk drive into its bay, keeping the carrier oriented so that the release button is on the right side. When the carrier reaches the rear of the bay, the release handle retracts.
- Push the handle in until it clicks into its locked position.

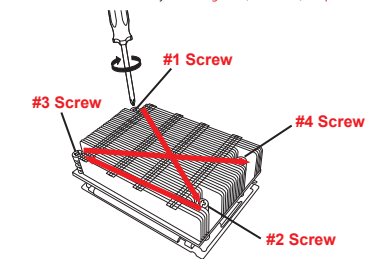
Heatsink Installation

1. Mounting the Heatsink



2. Securing the Heatsink

Using a diagonal pattern and a Torx T20 driver, tighten the four heatsink screws evenly to 16.1 kgf-cm (14.0 lbf-in) torque.



Caution

SAFETY INFORMATION
IMPORTANT: See installation instructions and safety warning before connecting system to power supply.
http://www.supermicro.com/about/policies/safety_information.cfm

WARNING:
To reduce risk of electric shock/damage to equipment, disconnect power from server by disconnecting all power cords from electrical outlets. If any CPU socket empty, install protective plastic CPU cap

WARNING:
Always be sure all power supplies for this system have the same power output. If mixed power supplies are installed, the system will not operate. For more information go to : <http://www.supermicro.com/support>

