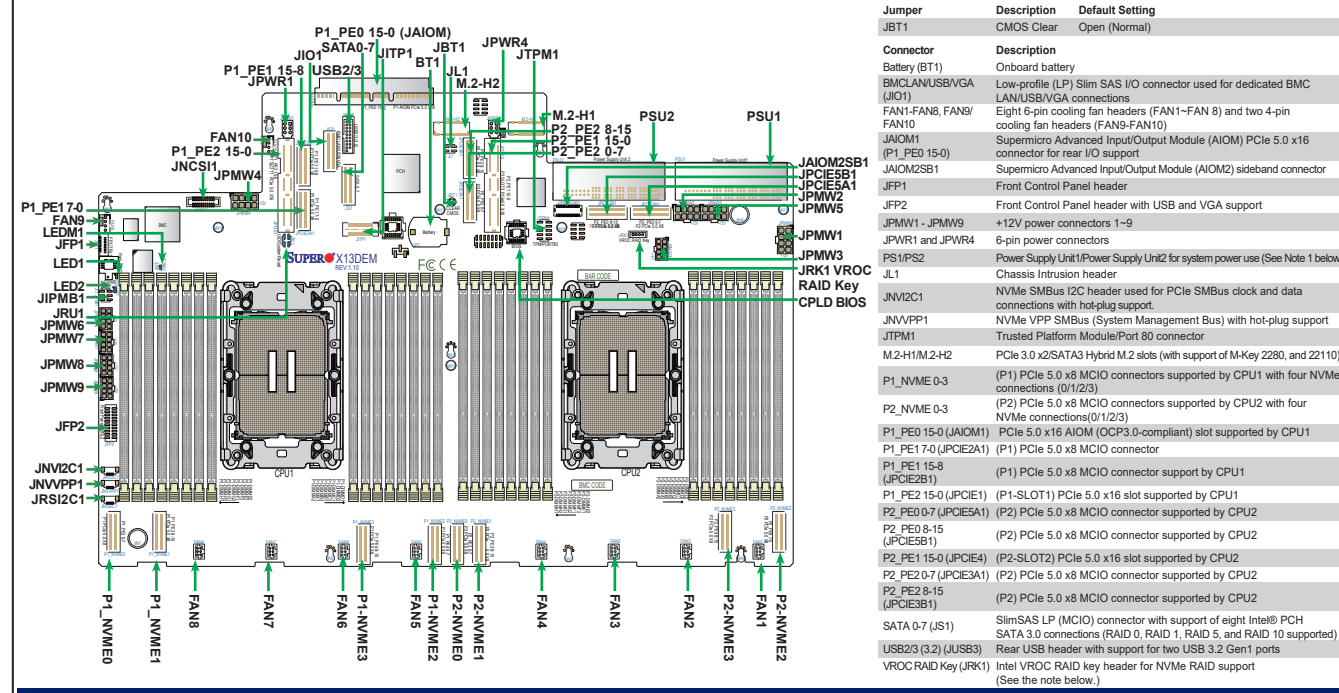


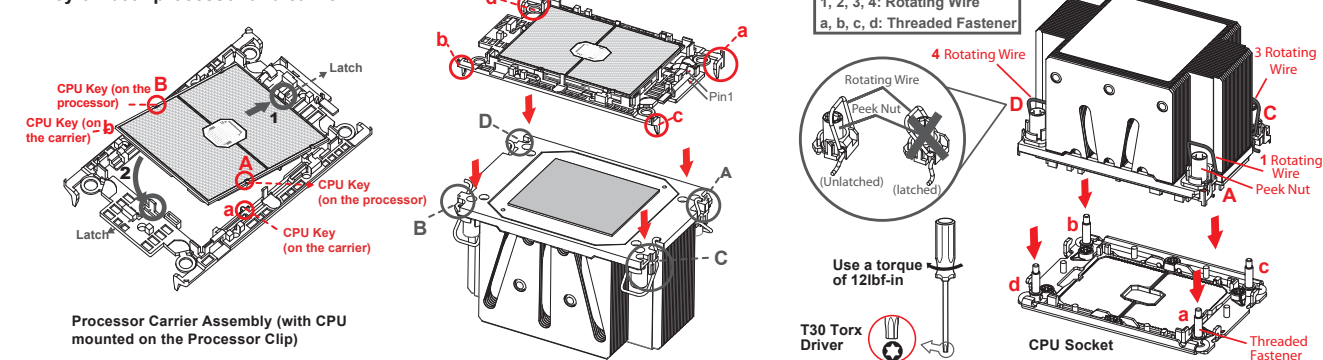
# SUPERMICRO® SuperServer 221H-TN24R Quick Reference Guide

## Board Layout



## CPU Installation

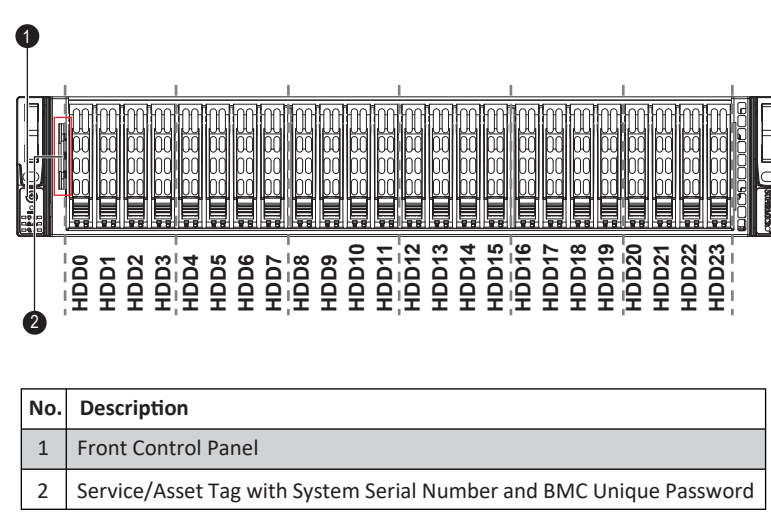
- Put processor into bracket – attention to the lineup Pin and key on both processor and carrier.
- Put processor carrier module into HS.
- Put processor heatsink module into MB.



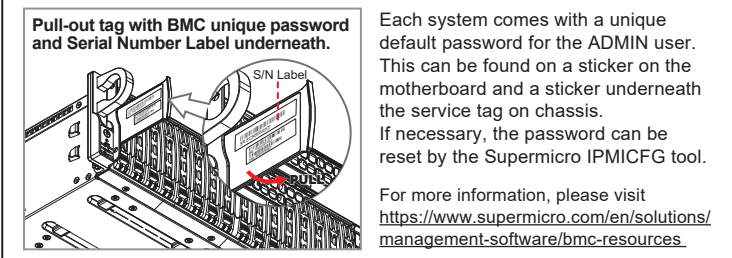
## Memory Support

DDR5 Memory Population Table for X13DP Motherboards (with 32 DIMMs installed)	
2 CPUs: (Recommended)	Memory Population Sequence
2 CPUs & 2 DIMMs	CPU1 and CPU2: A1, or B1 or C1, or E1
2 CPUs & 4 DIMMs	CPU1 and CPU2: A1, G1 or C1, E1
2 CPUs & 8 DIMMs	CPU1: A1, C1, E1, G1 CPU2: A1, C1, E1, G1
2 CPUs & 10 DIMMs	CPU1: A1, C1, D1, E1, F1, G1 CPU2: A1, C1, E1, G1
2 CPUs & 12 DIMMs	CPU1: A1, C1, D1, E1, F1, G1 and CPU2: A1, C1, D1, E1, F1, G1 or CPU1: A1, B1, C1, E1, G1, H1 and CPU2: A1, B1, C1, E1, G1, H1 or CPU1: B1, C1, D1, E1, F1, H1 and CPU2: B1, C1, D1, E1, F1, H1 or CPU1: A1, B1, D1, F1, G1, H1 and CPU2: A1, B1, D1, F1, G1, H1
2 CPUs & 16 DIMMs	CPU1: A1, B1, C1, D1, E1, F1, G1, H1 CPU2: A1, B1, C1, D1, E1, F1, G1, H1
2 CPUs & 22 DIMMs	CPU1: A1, A2, B1, B2, C1, C2, D1, D2, E1, E2, F1, F2, G1, G2, H1, H2 CPU2: A1, C1, D1, E1, F1, G1
2 CPUs & 24 DIMMs	CPU1: A1, A2, B1, B2, C1, C2, D1, D2, E1, E2, F1, F2, G1, G2, H1, H2 CPU2: A1, B1, C1, D1, E1, F1, G1, H1
2 CPUs & 32 DIMMs	CPU1: A1, A2, B1, B2, C1, C2, D1, D2, E1, E2, F1, F2, G1, G2, H1, H2 CPU2: A1, A2, B1, B2, C1, C2, D1, D2, E1, E2, F1, F2, G1, G2, H1, H2

## Front View



## System Information



## Caution and Product Resources

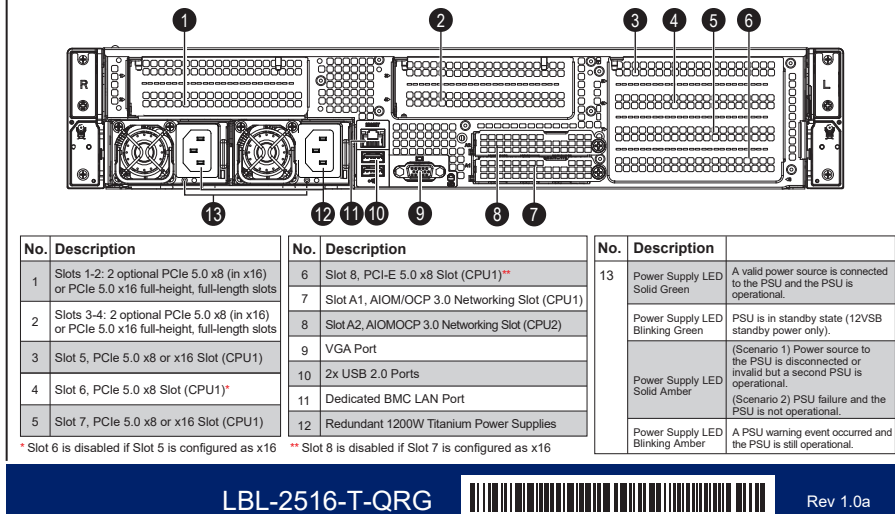
**SAFETY INFORMATION:**  
IMPORTANT: See installation instructions and safety warning before connecting system to power supply.  
[http://www.supermicro.com/about/policies/safety\\_information.cfm](http://www.supermicro.com/about/policies/safety_information.cfm)

**CAUTION:**  
Always be sure all power supplies for this system have the same power output. If mixed power supplies are installed, the system will not operate.  
This unit has redundant power sources. Please disconnect all the power cords before servicing.

**WARNING:**  
To reduce risk of electric shock/damage to equipment, disconnect power from server by disconnecting all power cords from electrical outlets. If any CPU socket empty, install protective plastic CPU cap.

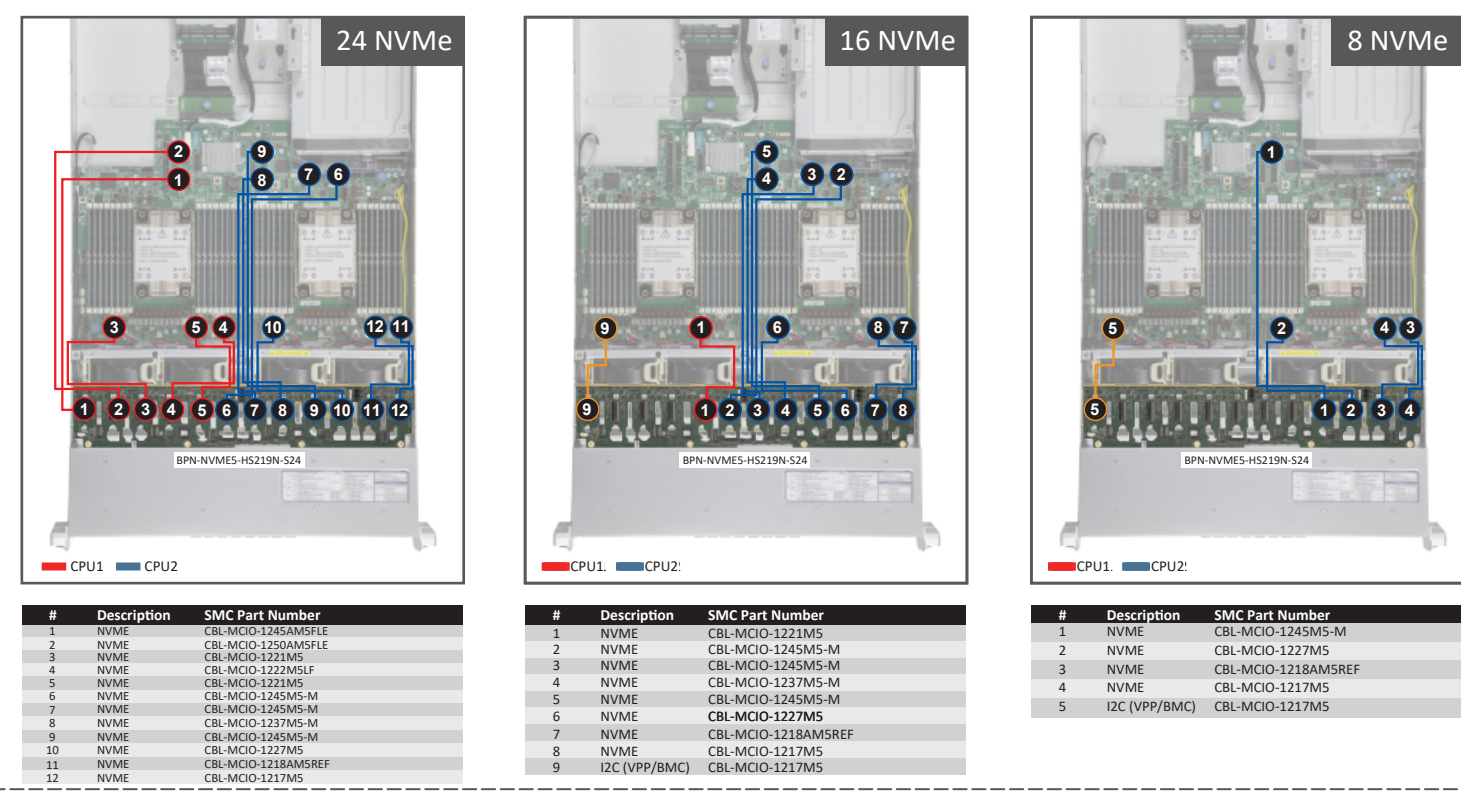
**PRODUCT RESOURCES:**  
For more information go to: <http://www.supermicro.com/support>

## Rear View

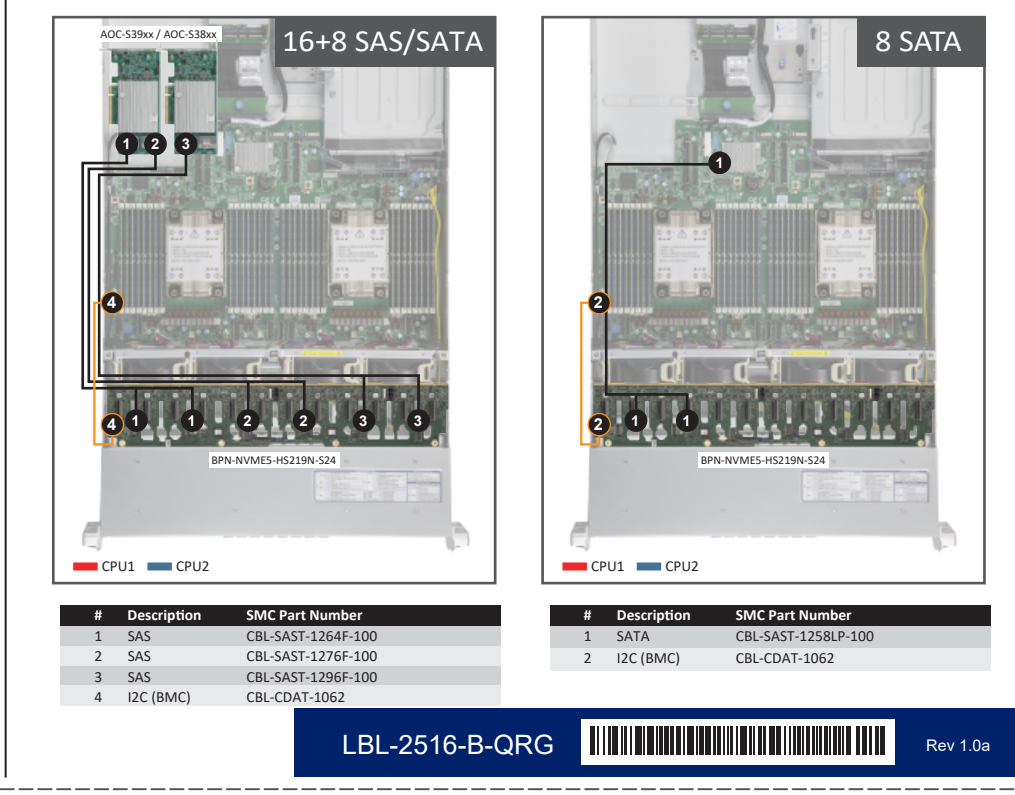


LBL-2516-T-QRG Rev 1.0a

## NVMe Drive Bay Cable Routing



## Storage AOC Drive Bay Cable Routing



LBL-2516-B-QRG Rev 1.0a