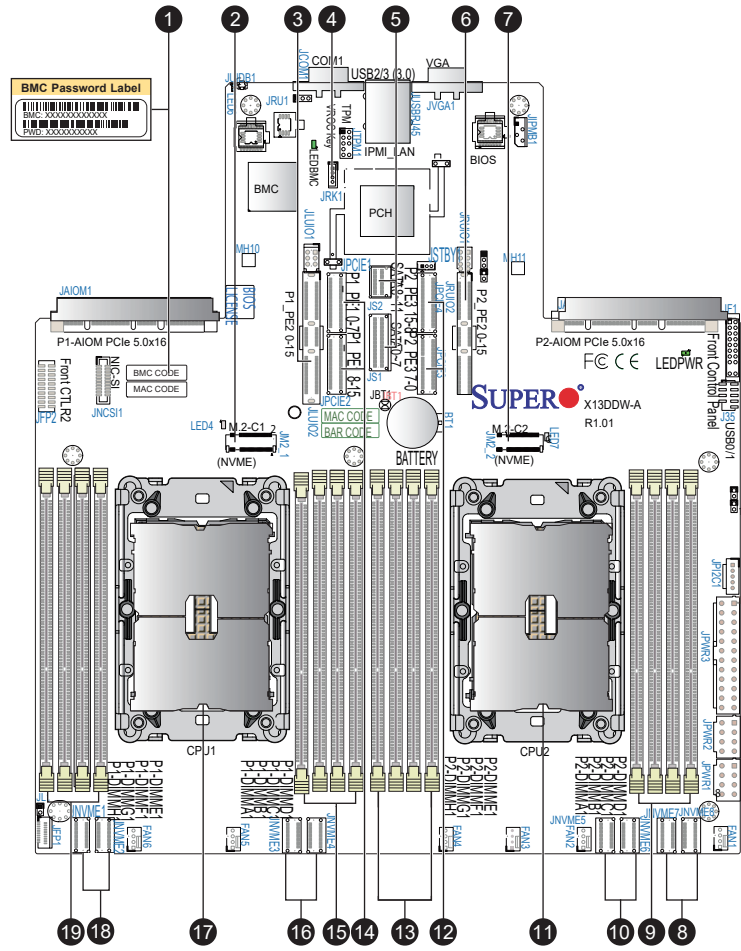


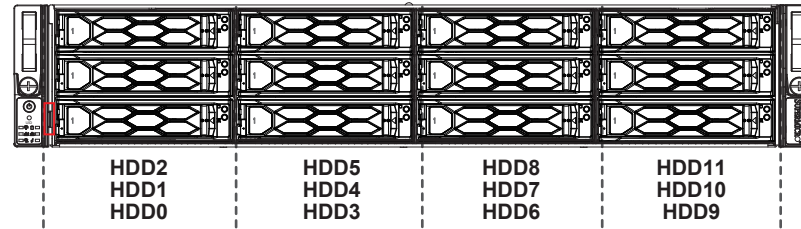
SUPERMICR SuperServer 621C-TN12R Quick Reference Guide

Board Layout



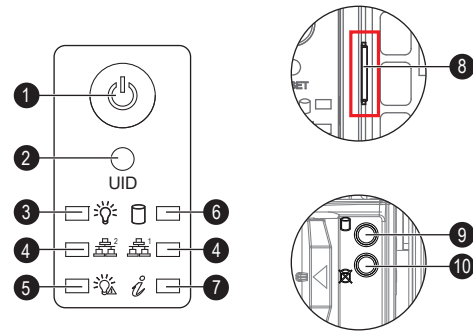
No.	Description
1	BMC Password Label
2	PCIe 5.0 x4 NVMe M.2 2280 M key slot from CPU1
3	PCIe 5.0 x16 left add-on card slot supported by CPU1
4	JRK1: RAID Key for onboard NVMe devices
5	SATA 0-11 ports supported by PCH
6	P2-DIMMA1/P2-DIMMB1/P2-DIMMC1/P2-DIMMD1 slots
7	PCIe 5.0 x4 NVMe M.2 2280 M key slot from CPU1
8	NVMe PCIe 5.0 x4 MCIO port (from CPU2)
9	Right side PCIe 5.0 x16 riser card slot supported by CPU2
10	NVMe PCIe 5.0 x4 MCIO port (from CPU2)
11	CPU2
12	PCIe 5.0 x8 MCIO connector supported by CPU2
13	P2-DIMMH1/P2-DIMMG1/P2-DIMMF1/P2-DIMME1 slots
14	PCIe 5.0 x8 MCIO connector supported by CPU1
15	P1-DIMMB1/P1-DIMMA1/P1-DIMMD1/P1-DIMMC1 slot
16	NVMe PCIe 5.0 x4 MCIO ports (from CPU1)
17	CPU1
18	NVMe PCIe 5.0 x4 MCIO ports (from CPU1)
19	P1-DIMMH1/P1-DIMMG1/P1-DIMMF1/P1-DIMME1 slots

Front View and Features



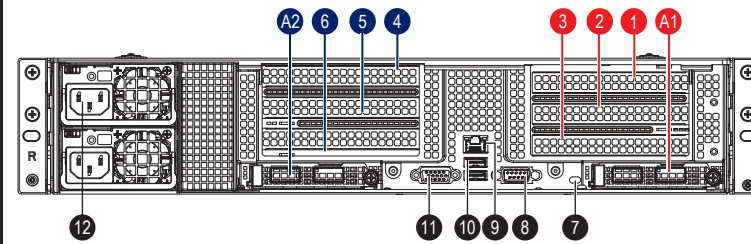
Slot	Description
0~11	Twelve 2.5/3.5-inch front drive bays (NVME/SAS/SATA)*

* Additional parts needed depending on drive type



No.	Description	No.	Description
1	Power Button	6	HDD Activity LED
2	UID Button/Reset Button	7	Universal Information LED
3	Power LED	8	Service/Asset Tag with System Serial Number and BMC Unique Password
4	LAN1 and LAN2 LED	9	Drive Device Activity LED
5	Power Failure LED	10	Drive Device Status LED

Rear View and Features



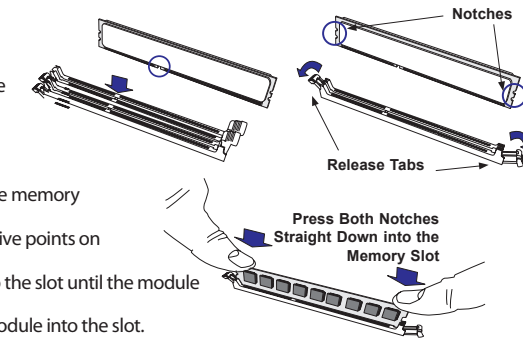
No.	Description
1/2	Configurable to 1x PCIe 5.0 x16 full-height (Slot 1) or 2x PCIe 5.0 x8 full-height From CPU 1
3	PCIe 5.0 x16 full-height From CPU 1
A1	AIOM slot from CPU 1
4/5	Configurable to 1x PCIe 5.0 x16 FHFL (Slot 5) or 2x PCIe 5.0 x8 full-height From CPU 2
6	PCIe 5.0 x16 full-height From CPU 2
A2	AIOM slot from CPU 2
7	UID/BMC Reset Button
8	COM port
9	Dedicated IPMI LAN Port
10	USB Ports
11	VGA port
12	Redundant 1200W Titanium Level Power Supplies

Riser Cable Configuration Guide		
	Left Riser Card RSC-D2-666G5	Right Riser Card RSC-D2R-666G5
4x PCIe 5.0 x16 slots (Slot 1, 3, 5, 6)	JPCIE1 to CN3, JPCIE2 to CN4	JPCIE4 to CN2, JPCIE3 to CN1
2x PCIe 5.0 x16 slots (Slot 3, 6)	JPCIE1 to CN3, JPCIE2 to CN1	JPCIE4 to CN2, JPCIE3 to CN4
4x PCIe 5.0 x8 slots (Slot 1, 2, 4, 5)	JPCIE1 to CN3, JPCIE2 to CN1	JPCIE4 to CN2, JPCIE3 to CN4

Memory

DIMM Installation

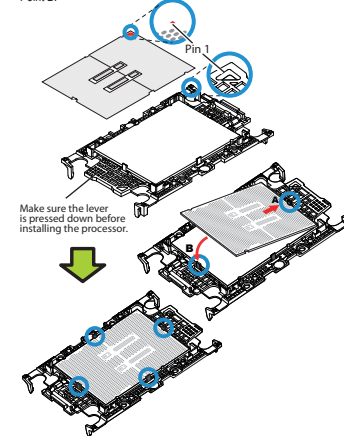
- Insert the desired number of DIMMs into the memory slots in order as defined in the system manual. For the best performance, please use the memory modules of the same type and speed.
- Push the release tabs outwards on both ends of the DIMM slot to unlock it.
- Align the key of the DIMM module with the receptive point on the memory slot.
- Align the notches on both ends of the module against the receptive points on the ends of the slot.
- Press the notches on both ends of the module straight down into the slot until the module snaps into place.
- Press the release tabs to the lock positions to secure the DIMM module into the slot.



CPU Installation

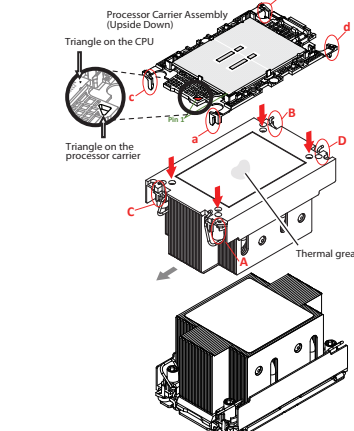
A. Creating the Intel Sapphire Rapids CPU Carrier Assembly

- Locate small gold triangle (Pin 1) on processor and corresponding hollowed triangle on carrier.
- Using the triangles as a guide, carefully align and place Point A of the processor into the carrier. Gently snap into place to fasten onto Point B.



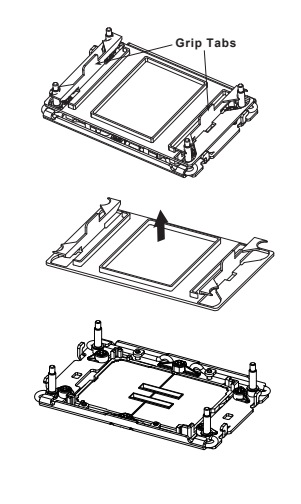
B. Assembling the Processor Heatsink Module (PHM)

- If this is a new heatsink, the thermal grease has been preapplied. Otherwise, apply the proper amount of thermal grease.
- Hold the processor carrier assembly so the processor's gold contacts are facing up, then align the holes of the processor carrier assembly with the holes on the heatsink. Press the processor carrier assembly down until it snaps into place. The plastic clips of the processor carrier assembly will lock at the four corners.
- Examine all corners to ensure that the plastic clips on the processor carrier assembly are firmly attached to the heatsink.



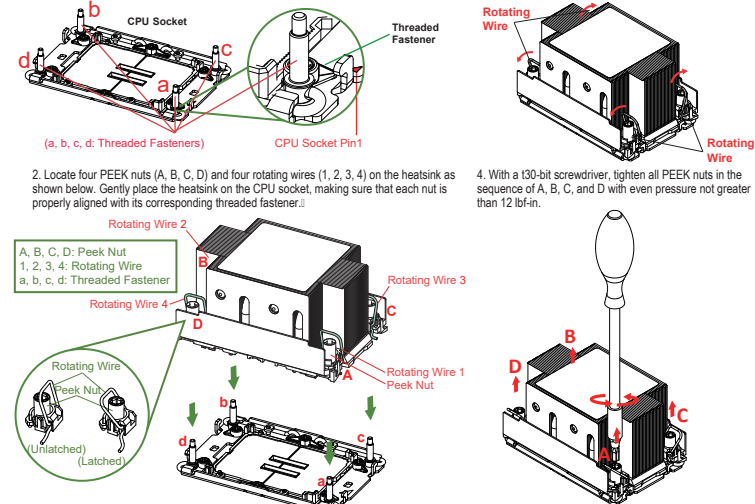
C. Preparing the CPU Socket for Installation

- Gently pull off the plastic protective cover by one corner to remove it from the CPU socket.

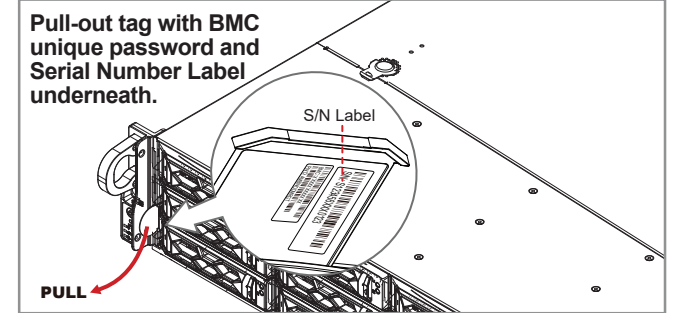


D. Installing the Process Heatsink Module

- Locate four threaded fasteners (a, b, c, d) on the CPU socket.
- Locate four PEEK nuts (A, B, C, D) and four rotating wires (1, 2, 3, 4) on the heatsink as shown below. Gently place the heatsink on the CPU socket, making sure that each nut is properly aligned with its corresponding threaded fastener.
- Press all four rotating wires outward to latch the PHM onto the CPU socket.
- With a 130-bit screwdriver, tighten all PEEK nuts in the sequence of A, B, C, and D with even pressure not greater than 12 lbf-in.



BMC Password Label



Pull-out tag with BMC unique password and Serial Number Label underneath.

Each system comes with a unique default password for the ADMIN user. This can be found on a sticker on the motherboard and a sticker underneath the service tag on chassis. If necessary, the password can be reset by the Supermicro IPMICFG tool.

For more information, please visit <https://www.supermicro.com/en/solutions/management-software/bmc-resources>

Caution

SAFETY INFORMATION:
IMPORTANT: See installation instructions and safety warning before connecting system to power supply. http://www.supermicro.com/about/policies/safety_information.cfm

WARNING:
To reduce risk of electric shock/damage to equipment, disconnect power from server by disconnecting all power cords from electrical outlets. If any CPU socket empty, install protective plastic CPU cap.

CAUTION:
Always be sure all power supplies for this system have the same power output. If mixed power supplies are installed, the system will not operate.

CAUTION:
This unit has redundant power sources. Please disconnect all the power cords before servicing.

Resources

PRODUCT RESOURCES:
For more information go to: <http://www.supermicro.com/support>

