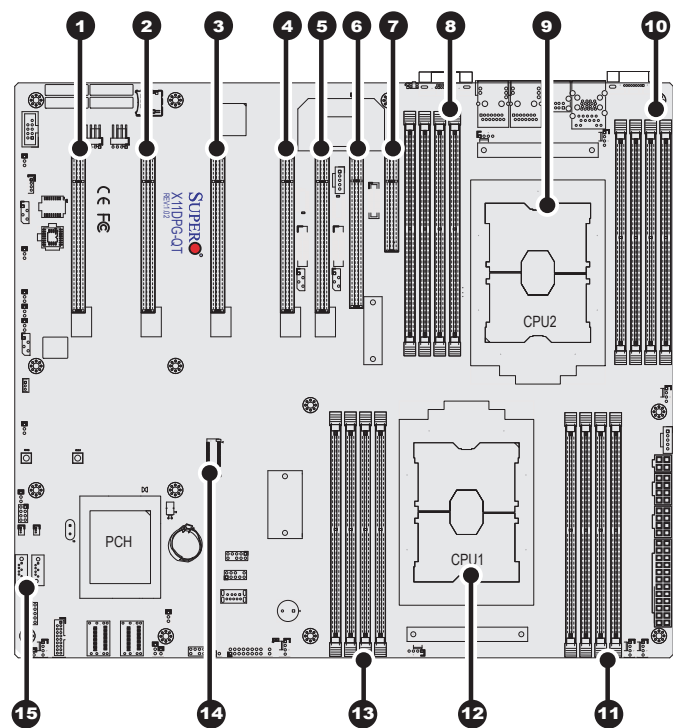


SUPERMICR[®] SuperServer 7049GP-TRT Quick Reference Guide

Board Layout



No.	Description	No.	Description
1	JPCIE2 (CPU1 Slot2 PCIe3.0 x 16)	9	CPU2
2	JPCIE4 (CPU1 Slot4 PCIe3.0 x 16)	10	P2-DIMMD2/P2-DIMMD1 (Blue) /P2-DIMME1 (Blue)/P2-DIMMF1 (Blue)
3	JPCIE6 (CPU2 Slot6 PCIe3.0 x 16)	11	P1-DIMMA2/P1-DIMMA1 (Blue) /P1-DIMMB1 (Blue)/P1-DIMMC1 (Blue)
4	JPCIE8 (CPU2 Slot8 PCIe3.0 x 16)	12	CPU1 (Install CPU1 first)
5	JPCIE9 (CPU1 Slot9 PCIe3.0 x 16)	13	P1-DIMMF1 (Blue)/P1-DIMME1 (Blue) /P1-DIMMD1 (Blue)/P1-DIMMD2
6	JPCIE10 (CPU2 Slot10 PCIe3.0 x 16)	14	M.2 Connector
7	JPCIE11 (CPU2 Slot11 PCIe3.0 x 4)	15	SATA DOM Power Connector 1/2
8	P2-DIMMC1 (Blue)/P2-DIMMB1 (Blue) /P2-DIMMA1 (Blue)/P2-DIMMA2		

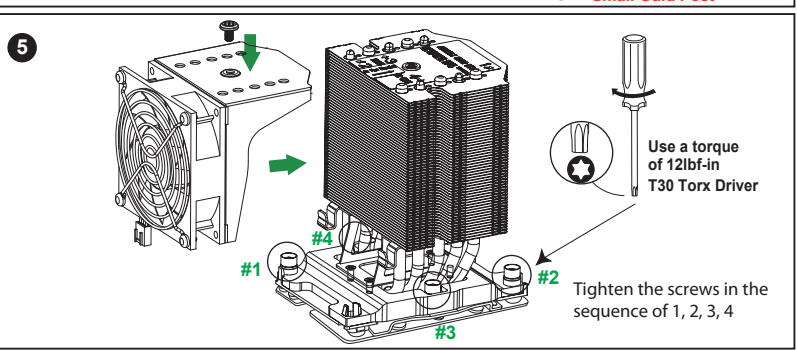
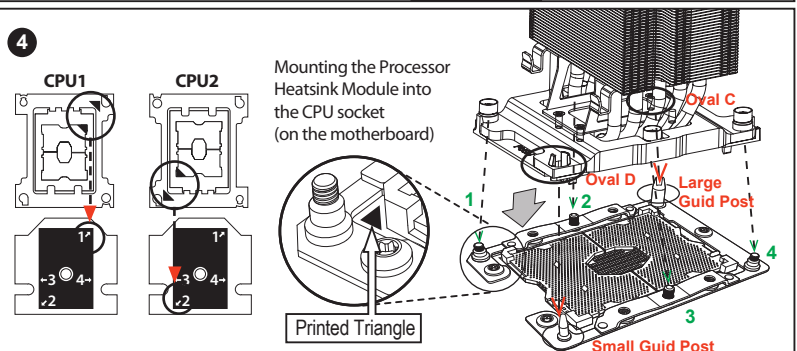
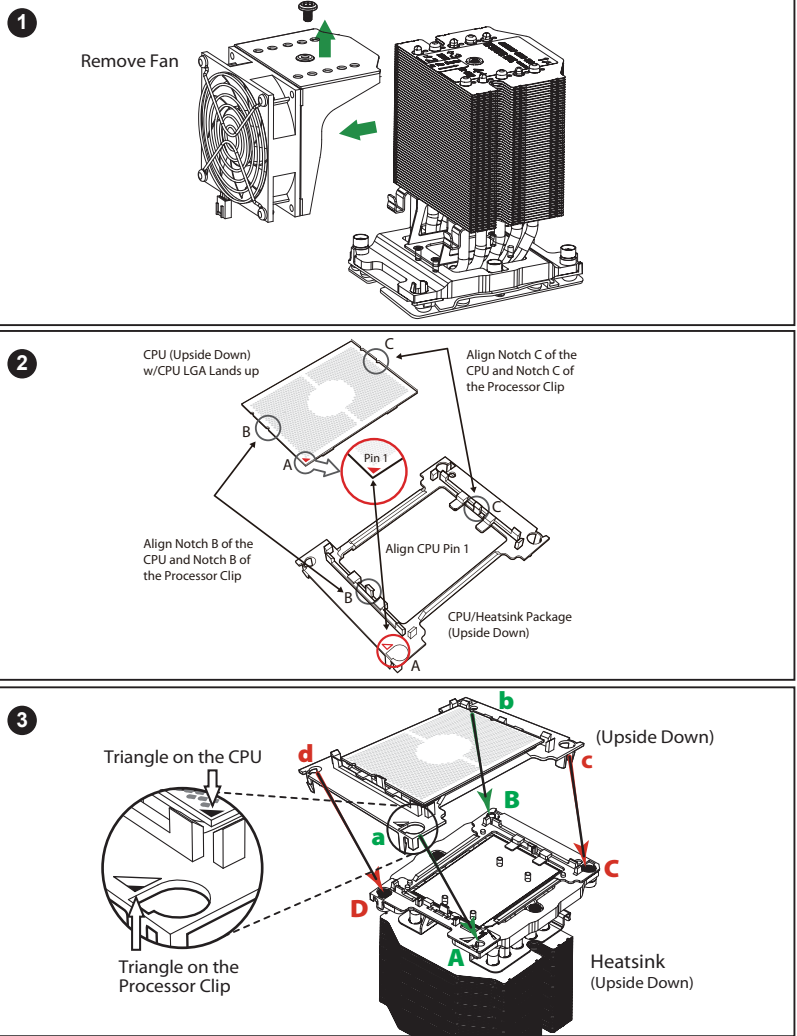
Memory Support

Memory Population Table	
When 2 CPUs are used	Memory Population Sequence
2 CPUs & 2 DIMMs	CPU1: P1-DIMMA1 CPU2: P2-DIMMA1
2 CPUs & 4 DIMMs	CPU1: P1-DIMMA1/P1-DIMMD1 CPU2: P2-DIMMA1/P2-DIMMD1
2 CPUs & 6 DIMMs	CPU1: P1-DIMMC1/P1-DIMMB1/P1-DIMMA1 CPU2: P2-DIMMC1/P2-DIMMB1/P2-DIMMA1
2 CPUs & 8 DIMMs	CPU1: P1-DIMMB1/P1-DIMMA1/P1-DIMMD1/P1-DIMME1 CPU2: P2-DIMMB1/P2-DIMMA1/P2-DIMMD1/P2-DIMME1
2 CPUs & 10 DIMMs	CPU1: P1-DIMMC1/P1-DIMMB1/P1-DIMMA1/P1-DIMMD1/P1-DIMME1/ P1-DIMMF1 CPU2: P2-DIMMB1/P2-DIMMA1/P2-DIMMD1/P2-DIMME1
2 CPUs & 12 DIMMs	CPU1: P1-DIMMC1/P1-DIMMB1/P1-DIMMA1/P1-DIMMD1/P1-DIMME1/ P1-DIMMF1 CPU2: P2-DIMMC1/P2-DIMMB1/P2-DIMMA1/P2-DIMMD1/P2-DIMME1/ P2-DIMMF1
2 CPUs & 14 DIMMs (Unbalanced: not recommended)	CPU1: P1-DIMMC1/P1-DIMMB1/P1-DIMMA1/P1-DIMMA2/P1-DIMMD1/ P1-DIMME1/P1-DIMMF1 CPU2: P2-DIMMC1/P2-DIMMB1/P2-DIMMA1/P2-DIMMA2/P2-DIMMD1/ P2-DIMME1/P2-DIMMF1
2 CPUs & 16 DIMMs (Unbalanced: not recommended)	CPU1: P1-DIMMC1/P1-DIMMB1/P1-DIMMA1/P1-DIMMA2/P1-DIMMD2/ P1-DIMMD1/P1-DIMME1/P1-DIMMF1 CPU2: P2-DIMMC1/P2-DIMMB1/P2-DIMMA1/P2-DIMMA2/P2-DIMMD2/ P2-DIMMD1/P2-DIMME1/P2-DIMMF1

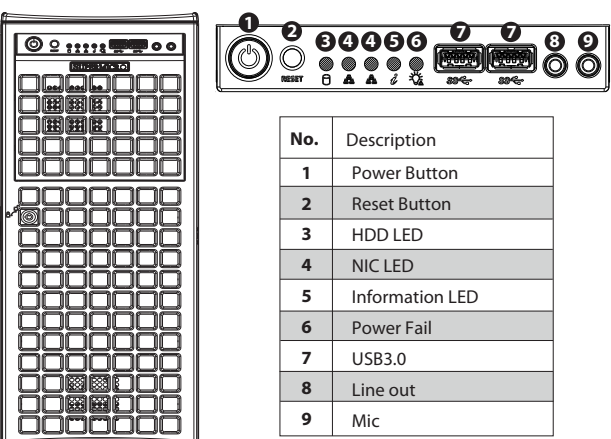
Beep Codes

BIOS Beep (POST) Codes		
Beep Code	Error Message	Description
1 beep	Refresh	Circuits have been reset (Ready to power up)
5 short, 1 long	Memory error	No memory detected in system
5 long, 2 short	Display memory read/write error	Video adapter missing or with faulty memory
1 long continuous	System OH	System overheat condition

CPU Installation

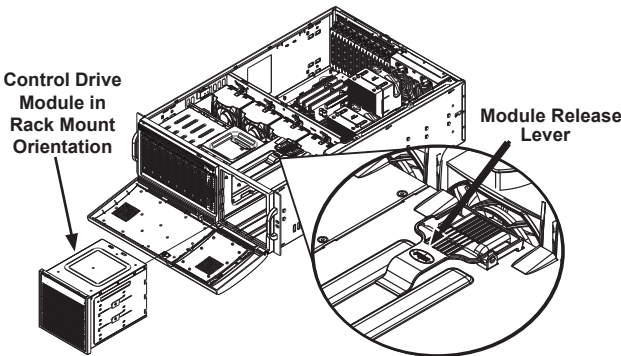


Front View & Interface



Tower or Rack Configuration

The SYS-7049GP-TRT is shipped in tower mode and can be immediately used as a workstation. If the chassis is to be used in a rack, the storage module must be rotated 90 degrees and the storage module cover must be replaced.



Rotating the Storage Module for Rack Mounting

1. Open the chassis cover.
2. Locate the storage module and disconnect any cables from the storage module to any component in the chassis.
3. Push the storage module release lever. This lever unlocks the storage module.
4. Grasp the external edges of the storage module and pull the unit from the chassis.
5. Turn the storage module 90 degrees.
6. Reinsert the module into the chassis and reconnect the cords.

Caution

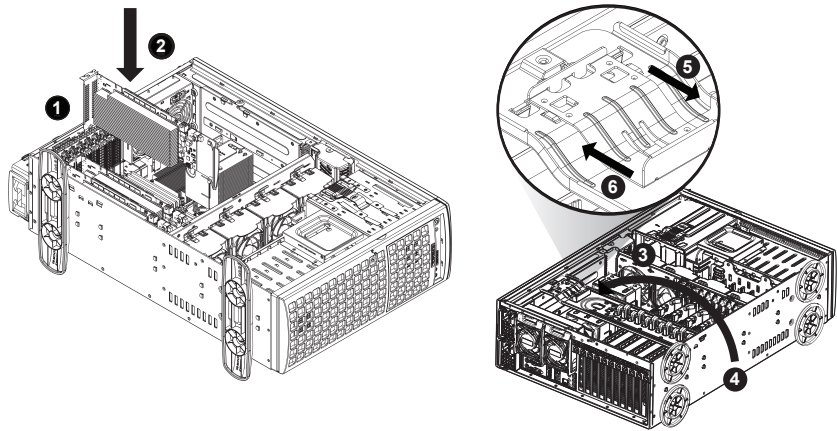
SAFETY INFORMATION
IMPORTANT: See installation instructions and safety warnings before connecting system to power supply.
http://www.supermicro.com/about/policies/safety_information.cfm

WARNING:
To reduce risk of electric shock/damage to equipment, disconnect power from server by disconnecting all power cords from electrical outlets.
If any CPU socket empty, Install protective plastic CPU caps on any empty CPU sockets.

CAUTION:
Always be sure all power supplies for this system have the same power output. If mixed power supplies are installed, the system will not operate.

For more information go to :
<http://www.supermicro.com/support>

Installing Graphics (GPU) Cards



Installing Double-Width Graphics Cards

1. Insert the graphics card into the appropriate expansion card slot.
2. Slide the graphics card down onto the motherboard.
3. Place the tabs of the graphics card holder bracket into the slots on the wall of the chassis as illustrated.
4. Lower the bracket down onto the card.
5. Pull back the slide lock and lower it over the raised tab as illustrated.
6. Push the slide lock forward, allowing the pins of the slide lock to penetrate the thru holes in the raised tab.

Note: For passive GPU card support, please buy the additional kit, MCP-320-74702-ON-KIT x 1; which consists of 2 rear caged fans and 1 air shroud for optimal performance.

