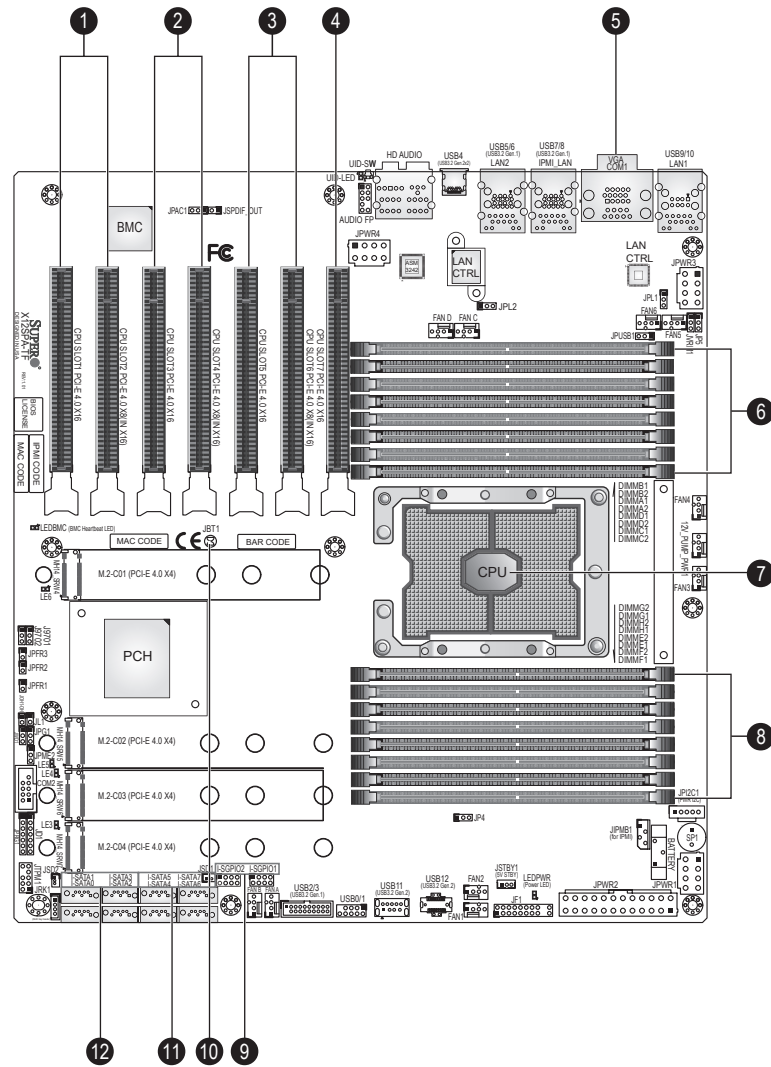


SUPERMICR[®] SuperWorkstation 540A-TR Quick Reference Guide

Board Layout



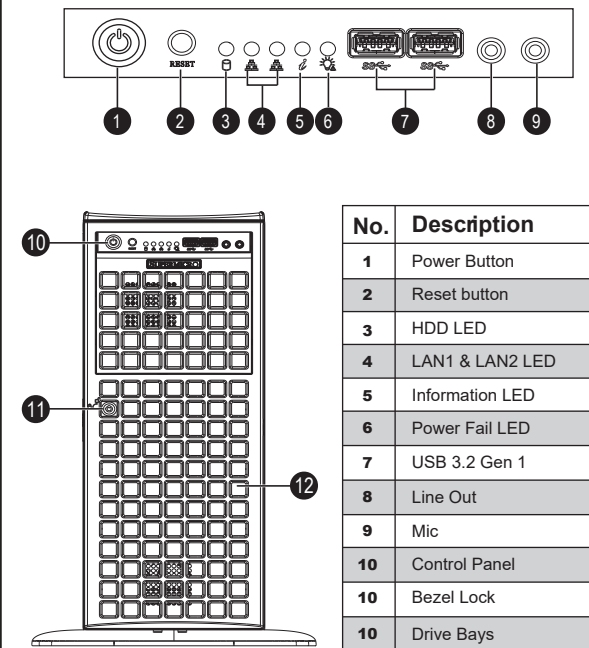
No.	Description
1	CPU SLOT1: PCIe 4.0 x16 Slots, CPU SLOT 2: PCIe 4.0 x8 Slots (in x16 slots)
2	CPU SLOT3: PCIe 4.0 x16 Slots, CPU SLOT 4: PCIe 4.0 x8 Slots (in x16 slots)
3	CPU SLOT5: PCIe 4.0 x16 Slots, CPU SLOT 6: PCIe 4.0 x8 Slots (in x16 slots)
4	CPU SLOT7: PCIe 4.0 x16 Slots
5	VGA
6	DIMMB1/DIMMB2/DIMMA1/DIMMB2/DIMMD1/DIMMD2/DIMMC1/DIMMC2 slots
7	CPU
8	DIMMG2/DIMMG1/DIMMH2/DIMMH1/DIMME2/DIMME2/DIMMF2/DIMMF1 slots
9	I-SGPIO1/I-SGPIO2: Serial General Purpose I/O Headers
10	JBT1: CMOS Clear
11	I-SATA4~7: Intel Serial ATA (SATA 3.0) Ports 0~7 (6Gb/second)
12	I-SATA0~3: Intel Serial ATA (SATA 3.0) Ports 0~7 (6Gb/second)

Memory Support

Memory Population Table (with 16 Slots)

Number of DIMMs	Memory Population Sequence
1 DIMM	CPU1: P1-DIMMA1
2 DIMMs	CPU1: P1-DIMMA1/P1-DIMME1
4 DIMMs	CPU1: P1-DIMMA1/P1-DIMME1/P1-DIMMC1/P1-DIMMG1
6 DIMMs	CPU1: P1-DIMMA1/P1-DIMMB1/P1-DIMME1/P1-DIMMF1/P1-DIMMC1/P1-DIMMG1
8 DIMMs	CPU1: P1-DIMMA1/P1-DIMMB1/P1-DIMMD1/P1-DIMME1/P1-DIMMF1/P1-DIMMC1/P1-DIMMG1/P1-DIMMH1
12 DIMMs	CPU1: P1-DIMMA1/P1-DIMMA2/P1-DIMMB1/P1-DIMMC1/P1-DIMMC2/P1-DIMMD1/P1-DIMME1/P1-DIMME2/P1-DIMMF1/P1-DIMMG1/P1-DIMMG2/P1-DIMMH1
16 DIMMs	CPU1: P1-DIMMA1/P1-DIMMA2/P1-DIMMB1/P1-DIMMB2/P1-DIMMC1/P1-DIMMC2/P1-DIMMD1/P1-DIMMD2/P1-DIMME1/P1-DIMME2/P1-DIMMF1/P1-DIMMF2/P1-DIMMG1/P1-DIMMG2/P1-DIMMH1/P1-DIMMH2

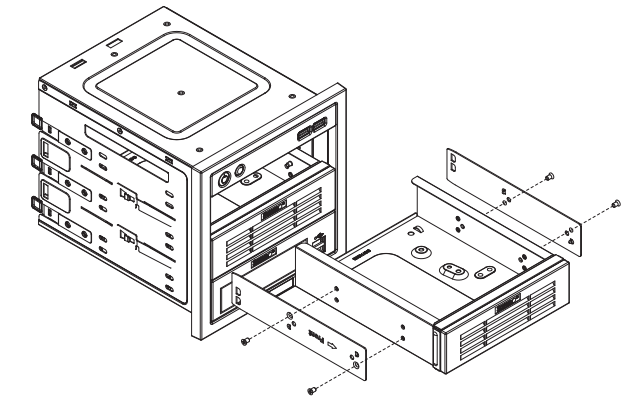
Front view & Interface



Storage Module

Configuring the Storage Module for 5.25" Devices

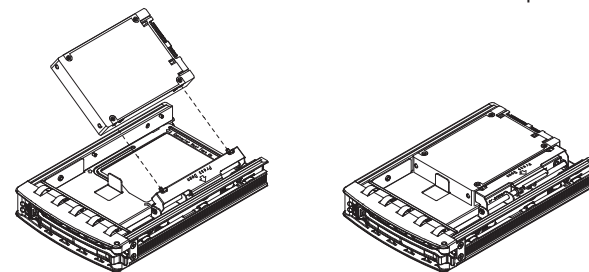
1. Remove the 5.25" drive trays from the storage module.
2. Remove the screws and drive tray brackets from the drive trays.
3. Install the 5.25" devices into storage module.
4. Replace the module back into the chassis.
5. Ensure that the storage module is securely locked into position.



Hard Drives Installation

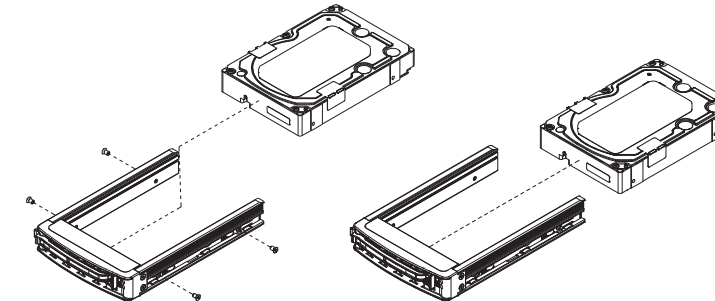
Installing 2.5" Drive into the Converter Tray

1. The 2.5" drives feature a toolless installation method.
2. Fit one side of the drive against the release lever.
3. Press the other side of the drive down until it clicks into place.

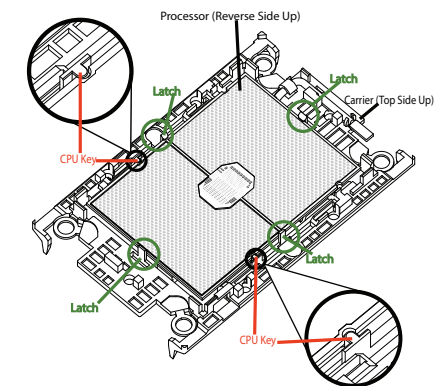


Installing 3.5" Hard Drives

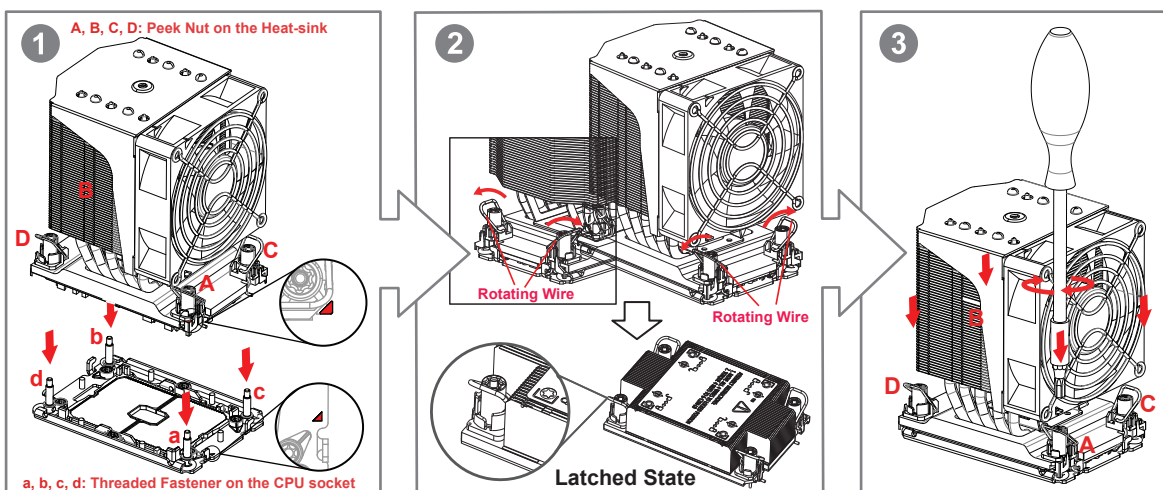
1. Remove the screws from the drive carrier.
2. Install the 3.5" drive into the drive carrier and reinstall the screws



CPU Installation



Heatsink Installation



Installing Heatsink

1. Tighten the screws in the sequence of A \ B \ C \ D, making sure that each peek nut is properly attached to its corresponding threaded fastener.
2. Press all four rotating wires outwards and make sure that the heatsink is securely latched onto the CPU socket.
3. Mount the fan module onto the Heatsink Module (direction of the arrow on the fan module should be pointing towards the rear of the chassis)

Caution

SAFETY INFORMATION
 IMPORTANT: See installation instructions and safety warning before connecting system to power supply.
http://www.supermicro.com/about/policies/safety_information.cfm

WARNING:
 To reduce risk of electric shock/damage to equipment, disconnect power from server by disconnecting all power cords from electrical outlets.
 If any CPU socket empty, install protective plastic CPU cap

CAUTION:
 Always be sure all power supplies for this system have the same power output. If mixed power supplies are installed, the system will not operate.

For more information go to :
<http://www.supermicro.com/support>

