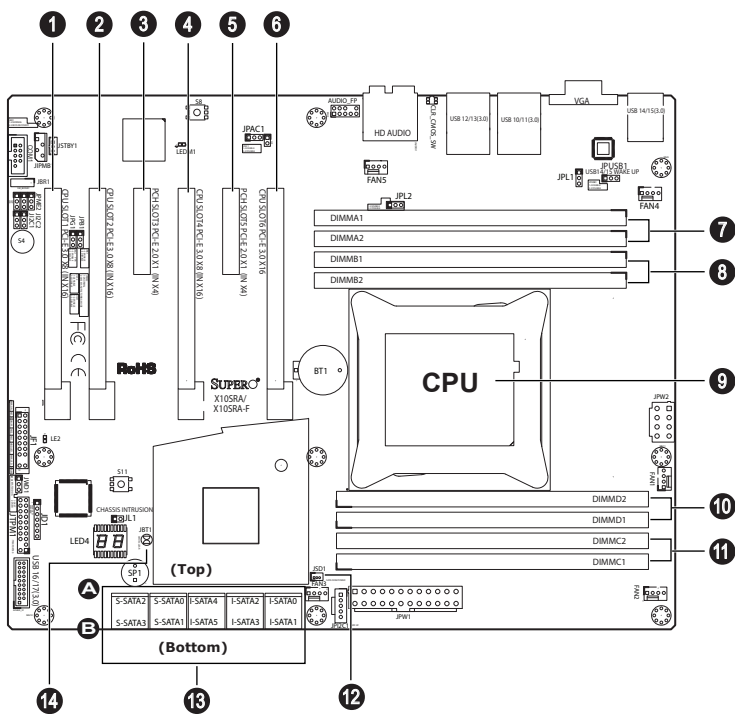


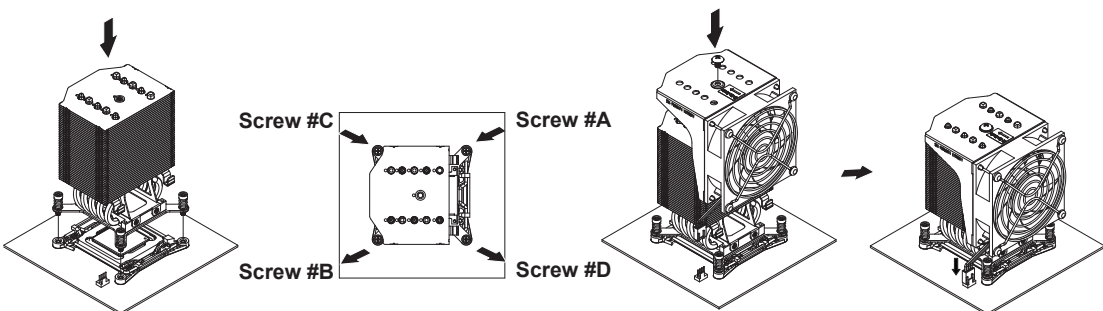
SUPERMICR<sup>®</sup> SuperWorkstation 5038A-I Quick Reference Guide

Board Layout



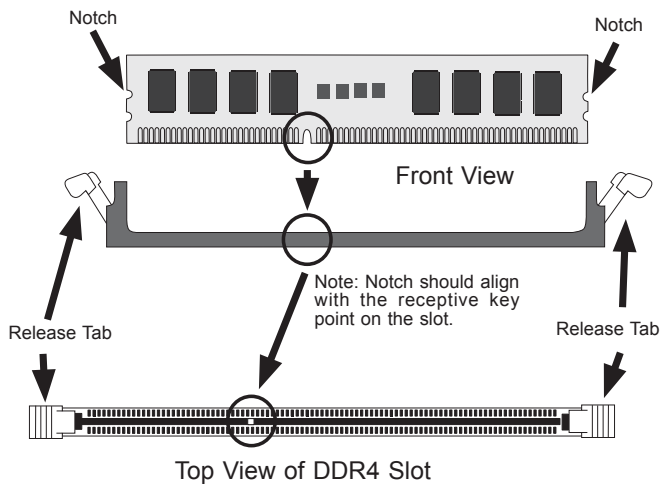
No.	Description
1	CPU Slot1 PCI-E 3.0 x8 (in x16)
2	CPU Slot2 PCI-E 3.0 x8 (in x16)
3	PCH Slot3 PCI-E 2.0 x1 (in x4)
4	CPU Slot4 PCI-E 3.0 x8 (in x16)
5	PCH Slot5 PCI-E 2.0 x1 (in x4)
6	CPU Slot6 PCI-E 3.0 x16
7	DIMMA1 (Blue slot)/DIMMA2
8	DIMMB1 (Blue slot)/DIMMB2
9	CPU
10	DIMMD1 (Blue slot)/DIMMD2
11	DIMMC1 (Blue slot)/DIMMC2
12	JSD1 = SATA DOM Power
13	SATA3 (6 Gbps)
14	JBT1 = CMOS Reset

Heatsink Installation

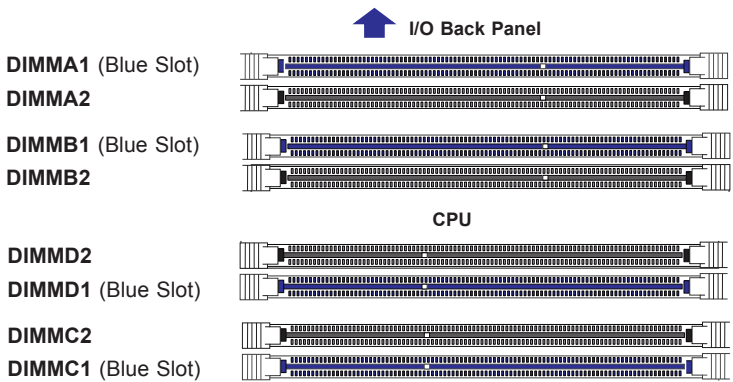


1. Place heatsink on top of installed CPU
2. Line up the four screws to socket
3. Push down heatsink and screw down as shown (cross pattern, in order: A, C, B, D)
4. NOTE: Only use 6-8 lb/f of torque; otherwise, hand-tighten each screw, to avoid damaging the system

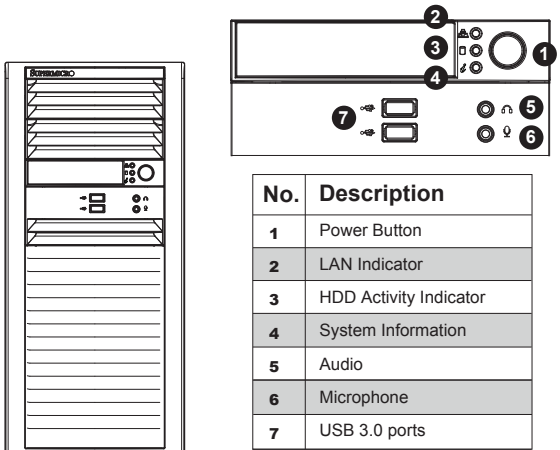
Memory



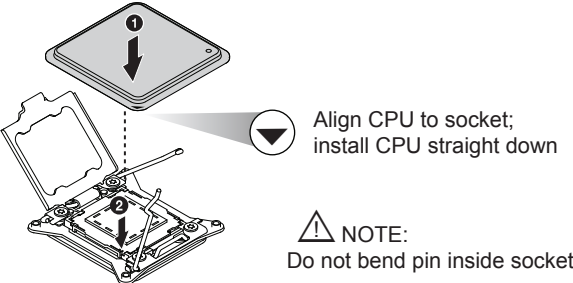
Memory Population Examples (Balanced)								
DIMMA1	DIMMB1	DIMMC1	DIMMD1	DIMMA2	DIMMB2	DIMMC2	DIMMD2	Total System Memory
4GB	4GB							8GB
4GB	4GB	4GB	4GB					16GB
4GB	4GB	4GB	4GB	4GB	4GB			24GB
4GB	4GB	4GB	4GB	4GB	4GB	4GB	4GB	32GB
8GB	8GB							16GB
8GB	8GB	8GB	8GB					32GB
8GB	8GB	8GB	8GB	8GB	8GB			48GB
8GB	8GB	8GB	8GB	8GB	8GB	8GB	8GB	64GB



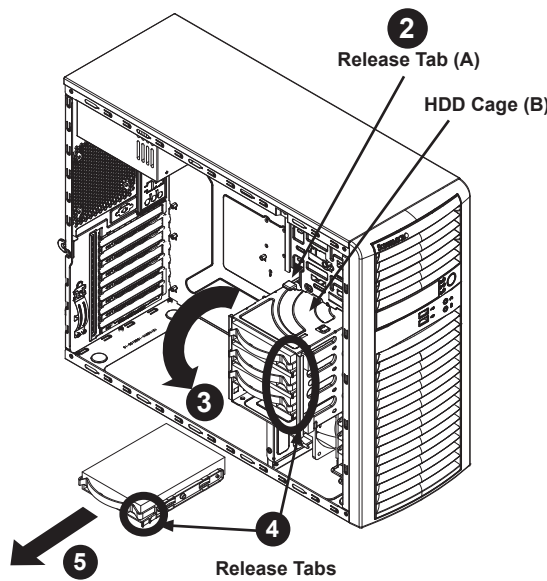
Front View & Interface



CPU Installation



Hard Drives Installation



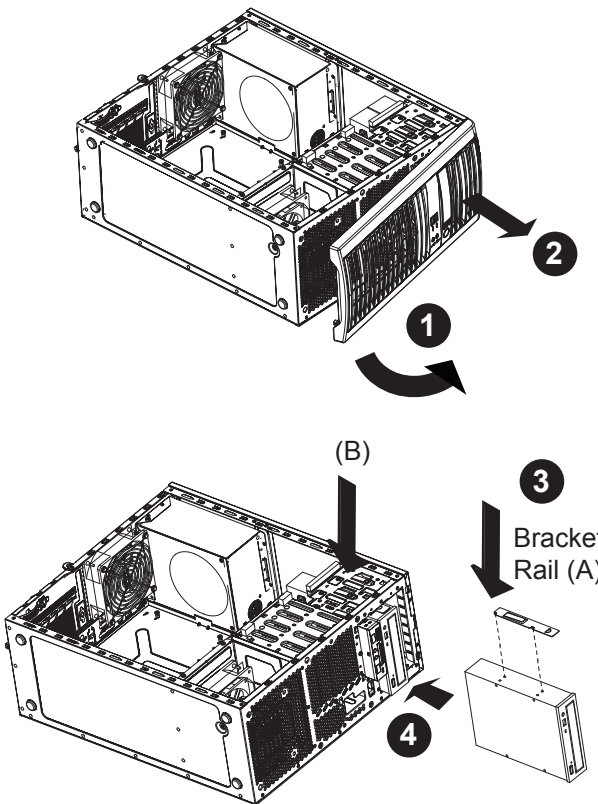
Removing and Installing 3.5" Hard Drives

1. Disconnect the chassis from any power source.
2. Rotate the hard drive cage outward 90 degrees.
3. Disconnect all of the cables from the hard drive.
4. Press the release tab on the side of the hard drive carrier that is to be removed from the hard drive cage.
5. Gently slide the hard drive carrier out of the hard drive cage.

Installing an Optical Device

Installing an Optical Device

1. Remove the front bezel from the chassis by lifting it upwards from the bottom, and pulling off the front of the chassis.
2. Remove the cover plate from the optical device slot on the front of the chassis.
3. Install the bracket rail (A) onto one side of the optical device, by inserting the pins of the bracket into the mounting holes on the side of the optical device.
4. Slide the optical device into the chassis.
5. If desired, screws may be used where indicated below (B) to secure the optical device into chassis.



Caution

**SAFETY INFORMATION**  
IMPORTANT: See installation instructions and safety warning before connecting system to power supply.  
[http://www.supermicro.com/about/policies/safety\\_information.cfm](http://www.supermicro.com/about/policies/safety_information.cfm)

**WARNING:**  
To reduce risk of electric shock/damage to equipment, disconnect power from server by disconnecting all power cords from electrical outlets.  
If any CPU socket empty, install protective plastic CPU cap

**CAUTION:**  
Always be sure all power supplies for this system have the same power output. If mixed power supplies are installed, the system will not operate.

For more information go to <http://www.supermicro.com/support>

