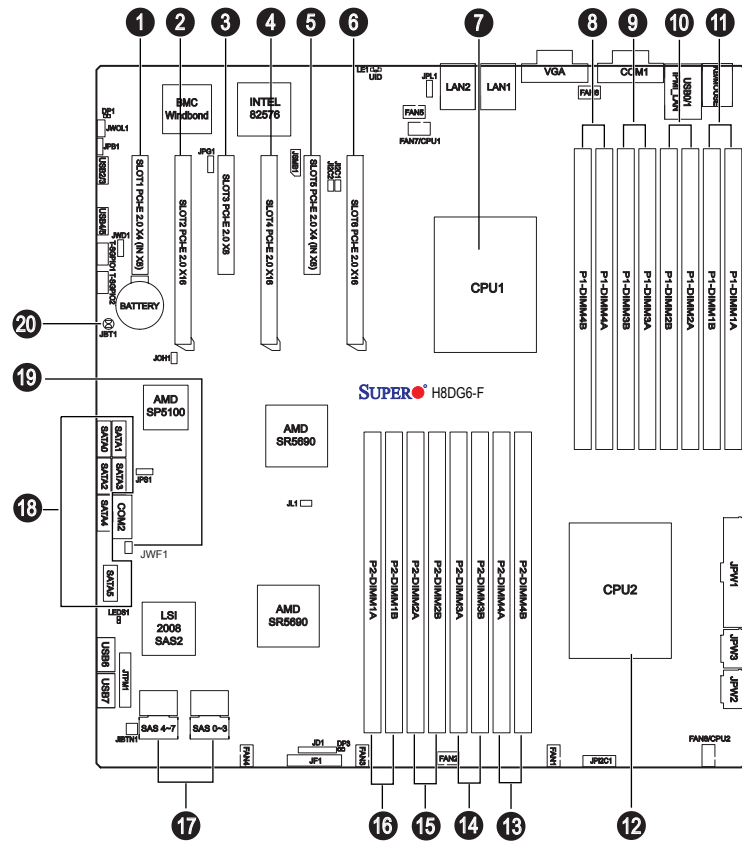


SUPERMICR[®] A+ Server 4022G-6F Quick Reference Guide

Board Layout



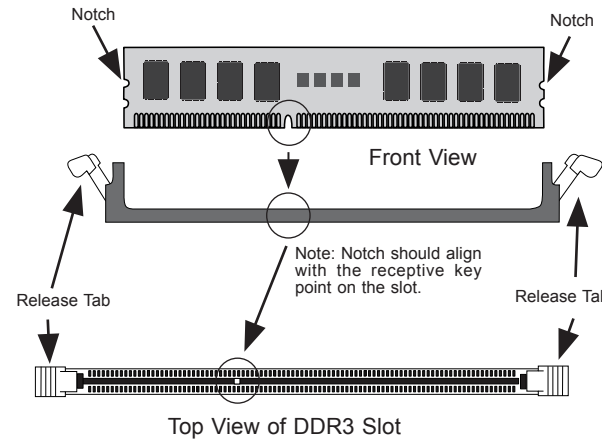
No.	Description
1	Slot1 PCI-E 2.0 x4 (in x8)
2	Slot2 PCI-E 2.0 x16
3	Slot3 PCI-E 2.0 x8
4	Slot4 PCI-E 2.0 x16
5	Slot5 PCI-E 2.0 x4 (in x8)
6	Slot6 PCI-E 2.0 x16
7	CPU1
8	P1-DIMM4A/P1-DIMM4B
9	P1-DIMM3A/P1-DIMM3B
10	P1-DIMM2A/P1-DIMM2B

No.	Description
11	P1-DIMM1A/P1-DIMM1B
12	CPU2
13	P2-DIMM4A/P2-DIMM4B
14	P2-DIMM3A/P2-DIMM3B
15	P2-DIMM2A/P2-DIMM2B
16	P2-DIMM1A/P2-DIMM1B
17	SAS0 ~3 & SAS4~7 Ports
18	SATA0 ~ SATA5: SATA ports
19	SATA DOM (Disk_On_Module) PWR
20	JBT1: CMOS Clear

Beep Codes

BIOS Beep Codes		
Beep Code/LED	Message	Description
1 beep	Refresh	Cuicuits have been reset. (Ready to power up)
5 short beeps + 1 long beep	Memory	No memory detected
1 long beeps + 8 short beeps	Video	Video adapter disabled or missing

MEMORY



Memory Population for Optimal Performance -For a Motherboard with One CPU (CPU1) Installed						
# DIMMS	CPU	Channel 1	Channel 2	Channel 3	Channel 4	
4 DIMMs	CPU1	P1-1A	P1-2A	P1-3A	P1-4A	
8 DIMMs	CPU1	P1-1A	P1-1B	P1-2A	P1-2B	P1-3A

Memory Population for Optimal Performance -For a Motherboard with Two CPUs (CPU1 & CPU2) Installed								
# DIMMS	CPU	Channel 1	Channel 2	Channel 3	Channel 4			
8 DIMMs	CPU1	P1-1A	P1-2A	P1-3A	P1-4A			
	CPU2	P2-1A	P2-2A	P2-3A	P2-4A			
16 DIMMs	CPU1	P1-1A	P1-1B	P1-2A	P1-2B	P1-3A	P1-3B	P1-4A
	CPU1	P1-1A	P1-1B	P1-2A	P1-2B	P1-3A	P1-3B	P1-4A
	CPU2	P2-1A	P2-1B	P2-2A	P2-2B	P2-3A	P2-3B	P2-4A
	CPU2	P2-1A	P2-1B	P2-2A	P2-2B	P2-3A	P2-3B	P2-4A

DIMM Module Population Configuration

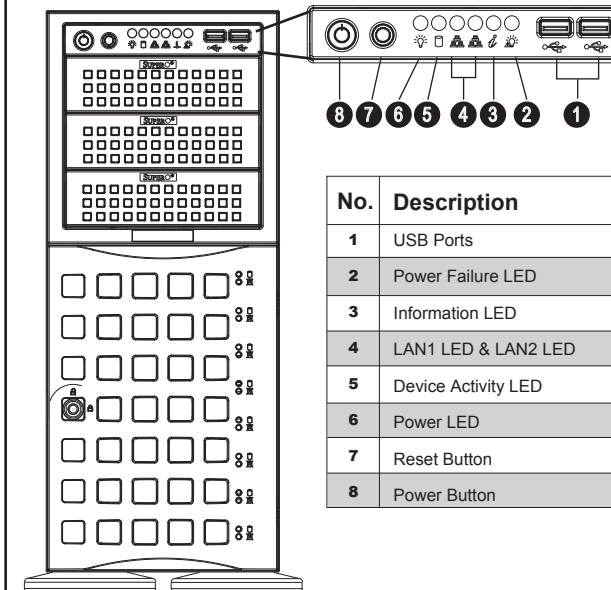
For memory to work properly, follow the tables below for memory installation:

Per Channel DIMM Populations Options					
DIMM Type	DIMM A	DIMM B	Max. MHz, 1.5V DIMMs	Max. MHz, 1.35V DIMMs	Max. GB/ Channel
Unbuffered DIMM	SR or DR	Empty	1600 MHz		8 GB
	SR	SR	1600 MHz	1333 MHz	8 GB
	DR	DR	1333 MHz		16 GB
Registered DIMM	SR or DR	Empty	1600 MHz		16 GB
	SR	SR	1600 MHz	1333 MHz	16 GB
	DR	DR	1600 MHz		32 GB
	QR	Empty	1333 MHz	1066 MHz	32 GB
LRDIMM	QR	QR	1066 MHz	800 MHz	64 GB
	QR	Empty		1333 MHz	32 GB
	QR	QR		1333 MHz	64 GB

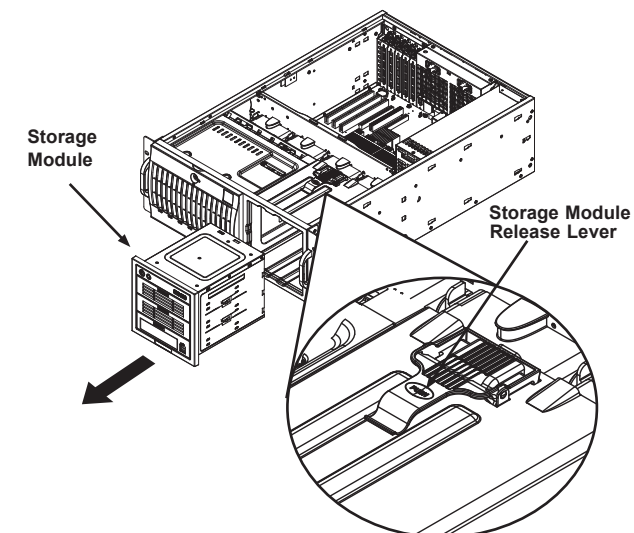
Note 1: Due to OS limitations, some operating systems may not show more than 4 GB of memory.

Note 2: Due to memory allocation to system devices, the amount of memory that remains available for operational use will be reduced when 4 GB of RAM is used. The reduction in memory availability is disproportional.

Front View & Interface



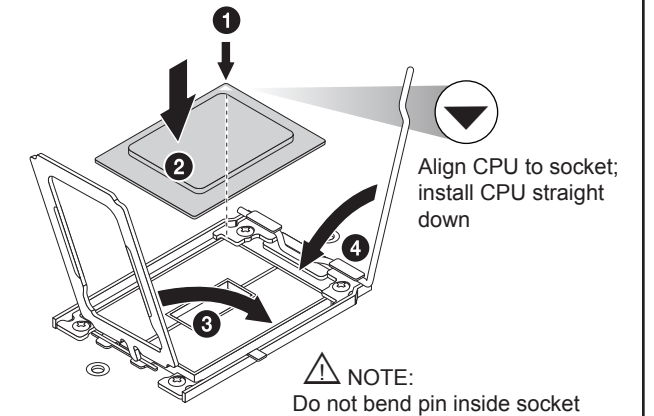
Rotating the Storage Module



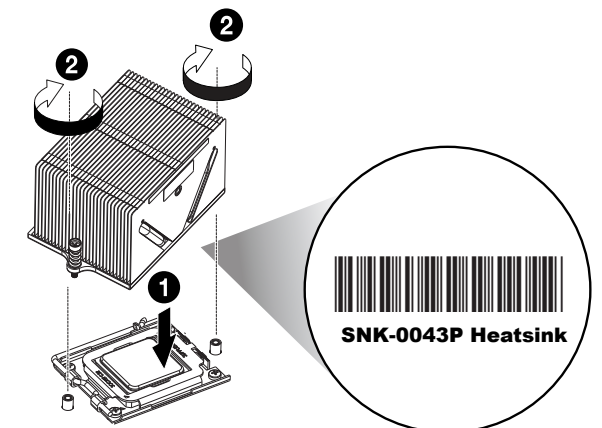
Rotating the Storage Module for Rack Mounting

1. Open the chassis cover.
2. Locate the storage module and disconnect any cables from the storage module to any component in the chassis.
3. Push the storage module release lever. This lever unlocks the storage module.
4. Grasp the external edges of the storage module and pull the unit from the chassis.
5. Turn the storage module 90 degrees.
6. Reinsert the module into the chassis and reconnect the cords.

CPU Installation



Heatsink Installation



Attach the barcode label as illustrated

1. Place heatsink on top of installed CPU
2. Line up the two screws to socket
3. Push down heatsink and screw down as shown
4. NOTE: Only use 6-8 lb/ft of torque; otherwise, hand-tighten each screw, to avoid damaging the system

Caution

SAFETY INFORMATION
IMPORTANT: See installation instructions and safety warning before connecting system to power supply.
http://www.supermicro.com/about/policies/safety_information.cfm

WARNING:
To reduce risk of electric shock/damage to equipment, disconnect power from server by disconnecting all power cords from electrical outlets.
If any CPU socket empty, install protective plastic CPU cap

CAUTION:
Always be sure all power supplies for this system have the same power output. If mixed power supplies are installed, the system will not operate.

For more information go to :
<http://www.supermicro.com/support>

