

IoT SuperServer SYS-110A-24C-RN10SP

Intel Atom Snow Ridge P5000 24-Core with embedded QAT, 300W redundant PWS, 1U edge platform



More details here

Key Applications

Hyper Converged Infrastructure, Networking Security Appliance, SD-WAN,

Key Features

- Intel® Atom® Snow Ridge P5362 24-Core with embedded QAT support;
- 1x PCIe 3.0 x8 expansion for AOC;
- 2 Hot-swap 2.5" SATA3 drive bays;
- 3x 40x28mm 4-PIN PWM fans;
- Cost Effective 1U Short-Depth Chassis with Redundant 300 PSU;
- M.2 selections (M.2 M-Key for SSD, B-Key for WAN or 4G-LTE module, Ekey for WiFi)
- TPM Onboard and header both, IPMI with OOB support;



Form Factor	1U Rackmount Enclosure: 437 x 43 x 249mm (17.2" x 1.7" x 9.8") Package: 655 x 155 x 465mm (25.8" x 6.1" x 18.3")
Processor	Single FCBGA-2106 Intel® Atom® Snow Ridge P5362
System Memory	Slot Count: 4 DIMM slots Max Memory (2DPC): Up to 256GB 2933MT/s ECC DDR4 RDIMM
Drive Bays Configuration	Default: Total 2 bays <ul style="list-style-type: none"> • 2 front hot-swap 2.5" SAS/SATA drive bays M.2: 1 M.2 SATA slot (M-key 2242/2280/22110; USB 2.0) 1 M.2 SATA slot (B-key 2242/2280/3042; USB 2.0) 1 M.2 SATA slot (E-key 2230; USB 2.0)
Expansion Slots	Default <ul style="list-style-type: none"> • 1 PCIe 3.0 x8 HHHL slot
On-Board Devices	SATA: SATA (6Gbps) Network Connectivity: 4 RJ45 1GBASE-T with Intel® I350-AM4 4 RJ45 1GBASE-T with Marvell® 88E1543 2 SFP28 25GbE with Intel® P5000 SoC
Input / Output	LAN: 1 RJ45 1 GbE Dedicated BMC LAN port 2 SFP28 25 GbE LAN ports 8 RJ45 1 GbE LAN ports USB: 2 Type-A ports Video: 1 VGA port

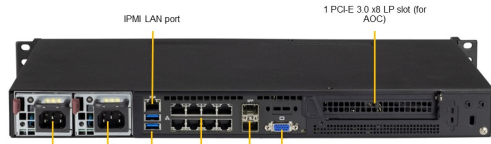
(Front View – System)



Power Button with Status LED

Drive Bay	Description
0-1	2x 2.5" Hot-swap SATA3 Drive Bays

(Rear View – System)



IPMI LAN port
1 PCIe 3.0 x8 LP slot (for AOC)
Redundant 300W Gold Level Power Supplies
2 USB 3.0 Ports
8 RJ45 GbE Ports
VGA Port

System Cooling	Fans: Up to 3x 4-PIN PWM 40x28mm Fan(s) Air Shroud: 1 Air Shroud
Power Supply	1x 300W Redundant Gold Level (90%) power supply
System BIOS	BIOS Type: AMI 32MB UEFI
Management	SuperCloud Composer® (SCC); Supermicro Server Manager (SSM); Supermicro Update Manager (SUM); Supermicro SuperDoctor® 5 (SD5); Super Diagnostics Offline (SDO); Supermicro Thin-Agent Service (TAS); SuperServer Automation Assistant (SAA) New!
PC Health Monitoring	FAN: 3 fans with tachometer status monitoring, Status monitoring for speed control Fan speed control, Dual Cooling Zone Pulse Width Modulated (PWM) fan connectors Support 3-pin fans (w/o speed control) Temperature: CPU thermal trip support Thermal Control for 3 Fan Connectors
Dimensions and Weight	Weight: Gross Weight: 12 lbs (5.44 kg) Net Weight: 8 lbs (3.63 kg) Available Color: Black
Operating Environment	Operating Temperature: 0°C to 40°C (32°F to 104°F) Non-operating Temperature: -40°C to 70°C (-40°F to 158°F) Operating Relative Humidity: 8% to 90% (non-condensing) Non-operating Relative Humidity: 5% to 95% (non-condensing)
Motherboard	Super A3SSV-24C-SPLN10F
Chassis	CSE-506TS-R000NP