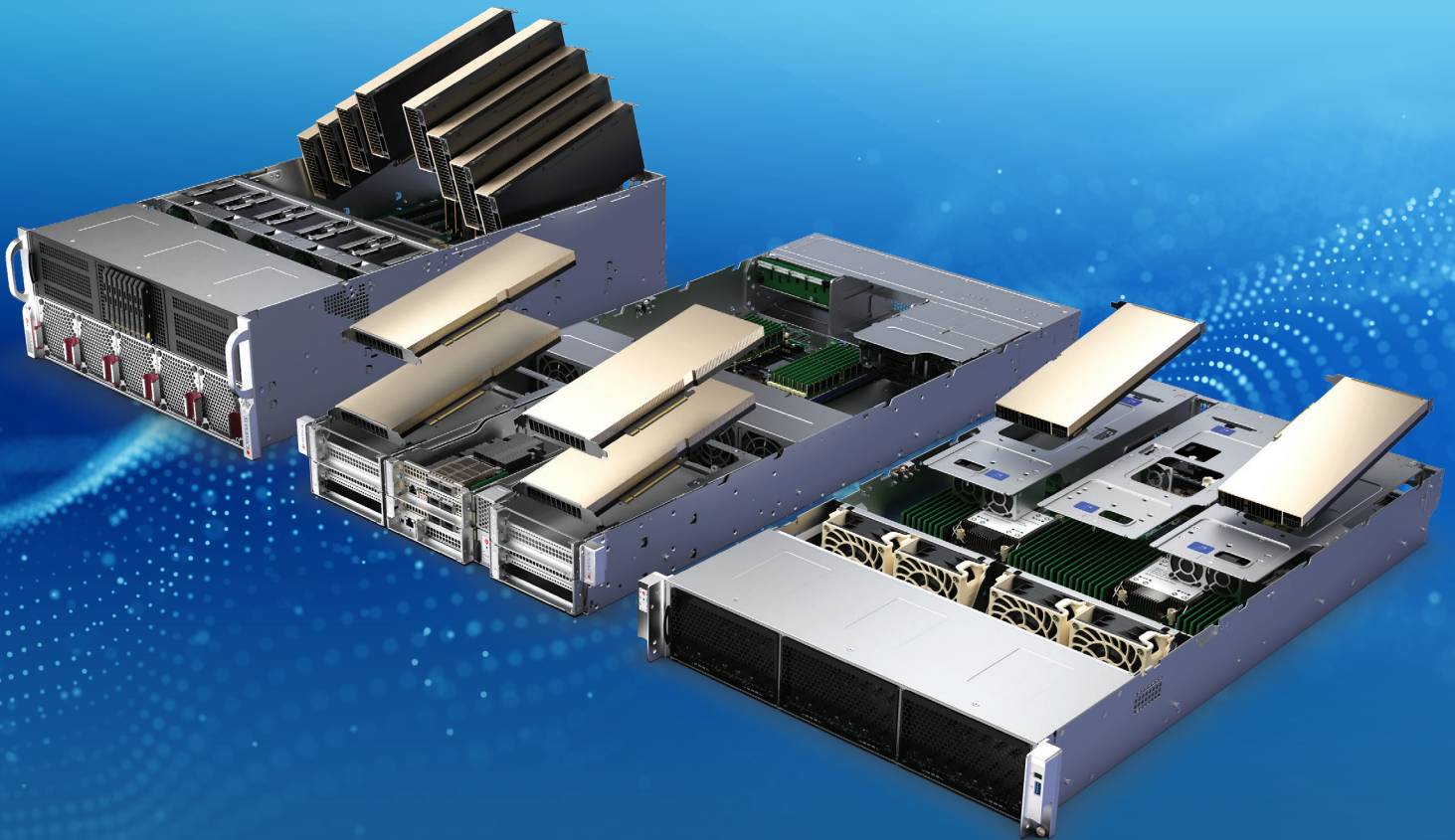




Supermicro Enterprise AI Solutions

Featuring NVIDIA RTX PRO™ Blackwell Server Edition GPUs

Powerful, Flexible Multi-Workload Acceleration from AI Factory, to Data Center, to Edge



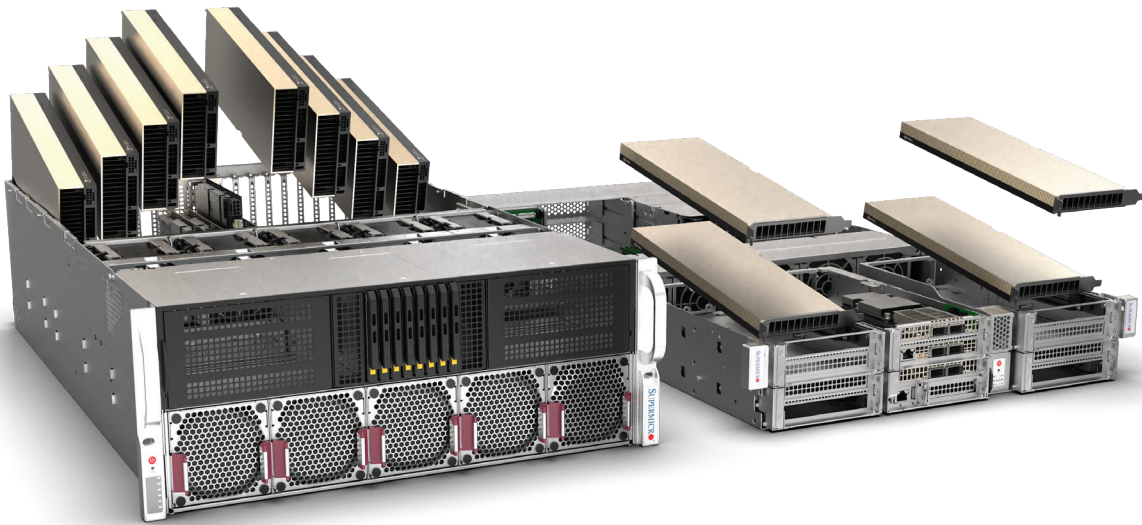
Flexible and modular architectures with industry-leading time-to-online (TTO)

Data center performance in form factors that can be deployed anywhere

Complete, full-stack solutions with Supermicro and NVIDIA



Accelerate Every Enterprise Workload, Everywhere



Powerful, flexible multi-workload acceleration from AI factory to data center to edge

Supermicro's modular and flexible accelerated solutions featuring NVIDIA RTX PRO Blackwell Server Edition GPUs provide unprecedented performance and efficiency for AI, HPC, graphics, and video with industry-leading time-to-online. With a range of form factors and GPU configurations, Supermicro and NVIDIA solutions deliver up to 45x performance and 15x price/performance vs CPU-only compute, reducing infrastructure outlay and ongoing costs. With support for NVIDIA AI Enterprise software, full-stack solutions are right-sized for optimal multi-workload acceleration from AI factory to data center to edge.



Flexible and Modular with Industry-leading Time-to-Market

Supermicro's broad selection of systems based on industry-standard PCIe GPU form factors allows easy customization for specific workloads and deployments.



Data Center Performance that can be Deployed Anywhere

Wide range of form factors supports wide-ranging deployment from AI factory to network edge, providing powerful and efficient acceleration throughout the AI compute pipeline.



Complete, Full-Stack Solutions with Supermicro & NVIDIA

Supermicro NVIDIA-Certified Systems™ that ensure compatibility with NVIDIA networking and software to create turnkey solutions that reduce the complexity.

Accelerate Every Enterprise Workload, Everywhere

Optimized Solutions for Every Enterprise Workload



Enterprise AI Inference

Chat/RAG, extraction, routing, summarization, enterprise agents (search, ticketing, workflows)



Physical AI & Digital Twins

Robotics simulation, synthetic data generation, perception pipeline development, AI/visualization convergence



AI + Graphics Convergence

AI rendering/visualization, media pipelines (AI tagging/rendering/encode/transcode)



Computer Vision + Video Analytics

Multi-camera analytics, anomaly detection, intrusion detection, near-miss detection



Edge AI Inference

Local copilots (RAG/Q&A), extraction, classification, on-site inference

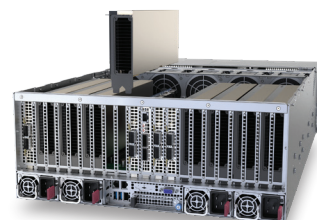


Edge Visualization & VDI

Remote visualization for branch engineering, geographic information systems, design review, AI/video/VDI consolidation on a single node

NVIDIA RTX PRO Blackwell Server Edition - The Ultimate Data Center GPUs

NVIDIA RTX PRO Blackwell Server Edition GPUs are multi-workload accelerators designed to deliver industry-leading performance and efficiency for enterprise AI workloads, providing an easy upgrade path without redesigning racks, power, or cooling, harnessing Blackwell-class performance within existing environments. The NVIDIA RTX PRO 4500 Blackwell Server Edition delivers breakthrough performance for demanding data processing, AI video, and inference workloads in a single-slot, power-efficient design, while the NVIDIA RTX PRO 6000 Blackwell Server Edition is a powerful data center GPU for AI and visual computing, accelerating demanding enterprise workloads including inference, simulation & FP32 HPC, and graphics & video applications.



NVIDIA RTX PRO 4500 Blackwell

NVIDIA RTX PRO 6000 Blackwell

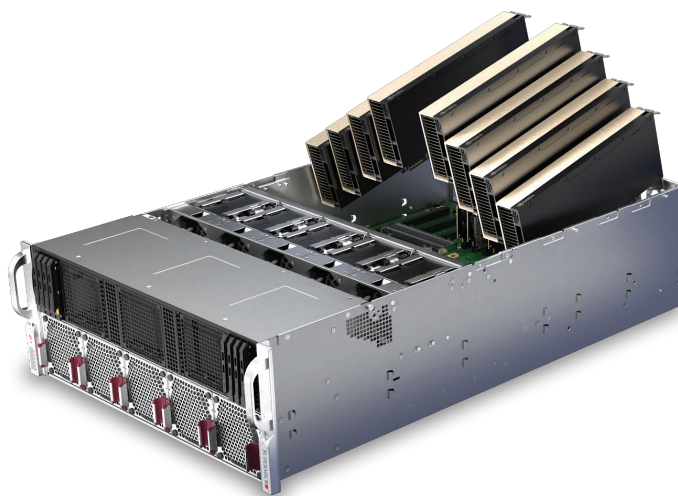
	NVIDIA RTX PRO 4500 Blackwell	NVIDIA RTX PRO 6000 Blackwell
Target Workloads	Generative AI, Small Model Inference, Edge AI & Video Analytics, Data Processing & Analytics, Mobile Cloud Gaming, Virtual Workstation, Transcoding & Video FX	Omniverse Physical AI, AI Inference & LLM Fine Tuning, Generative AI Image/Video, PC Cloud Gaming, Virtual Workstation, FR32 HPC
Memory	32GB GDDR7 @ 800GB/s	96GB GDDR7 @1597GB/s
MIG Instances (per GPU)	Up to 2 @ 16GB	Up to 4 @24GB
Power	165W (passive cooling)	400-600W (passive cooling)
Form Factor	Single-width FHFL	Double-width FHFL
Single-Precision Performance	51TFLOPS	120TFLOPS
Peak RT Core Performance	154TFLOPS	355TFLOPS



Supermicro AI Factory Systems

High-capacity GPU systems designed for AI factory and data center deployments, supporting physical AI, large-scale AI inference, enterprise HPC, and intensive graphics workloads. Architectures are thermally optimized for air-cooled environments, with select models also supporting high ambient temperatures of up to 35°C.

- Up to 8 double-width GPUs per system
- High ambient temperature operation up to 35°C with air cooling
- Additional PCIe 5.0 expansion slots for high-speed networking via NVIDIA ConnectX®-7 SuperNICs and NVIDIA BlueField®-3 DPUs
- Available in NVIDIA-Certified Systems™ configurations for guaranteed compatibility with NVIDIA Spectrum®-X networking and NVIDIA Enterprise AI software



SYS-422GA-NRT
AS-4125GS-TNRT
AS-4125GS-TNRT2

Available in direct-connect and dual-root configurations

AI Factory, Large-scale AI Inference, FP32 HPC

Up to 8 NVIDIA RTX PRO 6000 Blackwell (NRT)

Up to 8 NVIDIA RTX PRO 4500 Blackwell (TNRT/TNRT2)

Dual Intel® Xeon® 6900 Series (NRT)
Dual AMD EPYC™ 9004/9005 series (TNRT/TNRT2)

Up to 6TB DDR5
Up to 6TB DDR5 MRDIMM (NRT)

EDSFF E3.S (NRT)
2.5" NVMe/SATA (TNRT/TNRT2)



SYS-422GL-FNR2
SYS-422GL-NR

High-density NVIDIA MGX architecture

AI Factory, Large-scale AI Inference

Up to 8 NVIDIA RTX PRO 6000 Blackwell
Up to 8 NVIDIA RTX PRO 4500 Blackwell

Dual Intel Xeon 6900 Series

Up to 6TB DDR5
Up to 6TB DDR5 MRDIMM

EDSFF E1.S (NR)
EDSFF E3.S (FNR2)



SYS-522GA-NRT
AS-5126GS-TNRT
AS-5126GS-TNRT2

Thermally-optimized design for efficient cooling and maximum storage

Large-scale AI Inference, FP32 HPC

Up to 8 NVIDIA RTX PRO 6000 Blackwell
Up to 8 NVIDIA RTX PRO 4500 Blackwell

Dual Intel Xeon 6900 Series (NRT)
Dual AMD EPYC 9005/9004 series (TNRT/TNRT2)

Up to 6TB DDR5
Up to 6TB DDR5 MRDIMM (NRT only)

2.5" NVMe/SATA



SYS-222C-TN

Compact dual processor design for AI factories

Data Analytics, Visual Computing

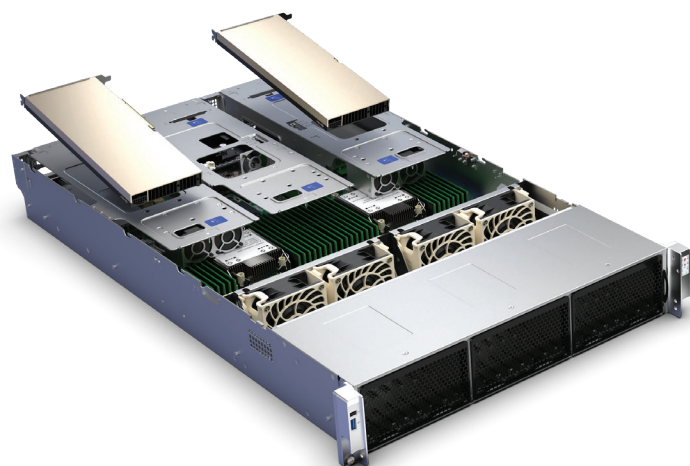
Up to 2 NVIDIA RTX PRO 6000 Blackwell
Up to 4 NVIDIA RTX PRO 4500 Blackwell

Dual Intel Xeon 6700 Series

Up to 4TB DDR5

2.5" NVMe

Supermicro Enterprise Data Center Systems



Compact and efficient architectures designed for CPU-only compute replacement in existing data centers, providing balanced performance and acceleration for enterprise AI workloads including small model AI inference, AI development, media transcoding, multi-user graphics, and data analytics.

- Up to 6 GPUs per system
- Industry-standard 1U and 2U form factors that can be easily installed in existing racks without modification
- Single and dual CPU architectures provide balanced performance and efficiency
- Range of front and rear I/O options to suit a variety of enterprise data center environments



ARS-222GL-NR

High-density solution with energy-efficient NVIDIA Vera CPU

Agentic AI, Virtualization, HPC

4 NVIDIA RTX PRO 6000 Blackwell
6 NVIDIA RTX PRO 4500 Blackwell

Dual NVIDIA Vera CPU

Up to 1.5TB ECC LPDDR5X

EDSFF E1.S

AS -2015CS-TNR

2U UP rackmount platform optimized for cloud data centers

Cloud Compute, CDN, Edge Node

2 NVIDIA RTX PRO 4500 Blackwell

Dual AMD EPYC 9004/9005 series

Up to 3TB DDR5

2.5"/3.5" NVMe/SATA

**SYS-222H-TN/SYS-122H-TN
AS-2015HS-TNR /AS -2126HS-TN**

Flagship performance rackmount platform in 1U or 2U

HPC, Virtualization

2 NVIDIA RTX PRO 4500 Blackwell (SYS-222H-TN/AS -2015HS-TNR/ AS -2126HS-TN)
1 NVIDIA RTX PRO 4500 Blackwell (SYS-122H-TN)

Dual Intel Xeon 6700/6500 Series (SYS-222H-TN/SYS-122H-TN)
Dual AMD EPYC™ 9004/9005 series (AS -2126HS-TN)
Single AMD EPYC™ 9004/9005 series (AS -2025HS-TNR)

Up to 8TB DDR5/1TB DDR5 MRDIMM (SYS-122H-TN/SYS-222H-TN)
Up to 6TB DDR5 (AS -2015HS-TNR /AS -2126HS-TN)

2.5" NVMe
3.5" NVMe (AS -2015HS-TNR only)

**SYS-221GE-NR
SYS-221GE-FNR2**

High-density designed based on NVIDIA MGX™ architecture

LLM Natural Language Processing

Up to 4 NVIDIA RTX PRO 6000 Blackwell
Up to 6 RTX PRO 4500 Blackwell (FNR2 only)

Dual 5th/4th Gen Intel Xeon Scalable

Up to 8TB DDR5

EDSFF E1.S

SYS-512B-WR

1U single processor system for entry-level AI applications

Enterprise AI

1 NVIDIA RTX PRO 4500 Blackwell

Single Intel Xeon 6700/6500 Series

Up to 2TB DDR5

2.5"/3.5" NVMe/SAS/SATA

Supermicro Enterprise Edge AI Systems

Edge AI systems enable low-latency inferencing at the network edge. Edge-optimized architectures include short-depth form factors, front I/O access, and maximized power and thermal efficiency. Ideal for acceleration closer to the data source, these systems support time-critical workloads including edge AI inference, real-time analysis, and video streaming/media.

- High-density, versatile server designs optimized for edge deployments
- Up to 8 double-width GPUs per 3U system or 2 double-width/4 single-width GPUs per 2U system
- High ambient temperature operation up to 35°C with air cooling
- Short-depth, front I/O form factor options for space-constrained environments



SYS-322GA-NR

Ultra-high-density configuration for on-prem AI inferencing

AI Inference

Up to 4 NVIDIA RTX PRO 6000 Blackwell
Up to 8 NVIDIA RTX PRO 4500 Blackwell

Dual Intel Xeon 6900 Series

Up to 6TB DDR5
Up to 6TB DDR5 MRDIMM

EDSFF E1.S



**AS-2116S-TNRT
AS-2116S-FTNRT**

2U compact edge AI system

Edge AI, Telco Edge

1 NVIDIA RTX PRO 4500 Blackwell

Single AMD EPYC 9005 series

Up to 3TB DDR5

2.5" NVMe/SATA



SYS-222HE-TN

Flagship data center performance at the edge

Edge AI, 5G Networking

Up to 3 NVIDIA RTX PRO 4500 Blackwell

Dual Intel Xeon 6700/6500 Series

Up to 8TB DDR5

2.5" NVMe



**SYS-212GB-NR
SYS-212GB-FNR**

Single processor architecture optimized for edge AI inference with front or rear I/O

Edge AI, Financial Services, Scientific Research

2 NVIDIA RTX PRO 6000 Blackwell
Up to 4 NVIDIA RTX PRO 6000 Blackwell (FNR only)

Single Intel Xeon 6700/6500 Series

Up to 2TB DDR5

EDSFF E1.S

Supermicro Multi-Node AI Systems



Supermicro multi-node systems are designed for maximum compute density, with shared components enhancing efficiency and reducing raw materials usage.

SuperBlade® is designed to maximize compute density while reducing power, cabling, and operational overhead, combining high performance with a shared resource architecture that integrates power, cooling, networking, and management into a unified, resource-saving design.

MicroBlade extends this architecture to ultra-dense, scaleout environments, delivering exceptional compute density and cost efficiency. Designed for cloud-native, distributed, and edge-scale deployments, it emphasizes energy efficiency, flexible I/O, and simplified operations, making it ideal for large fleets where performance per watt and per node drive total value.



SBI-612BA-5NE34
SBI-612B-5NE34

Performance-centric architecture optimized for demanding workloads

Enterprise Applications, HPC, Scientific Research, Virtualization

2 NVIDIA RTX PRO 6000 Blackwell* (per node)

Single Intel Xeon 6900/6700/6500 Series (per node)

Up to 3TB DDR5 (per node; SBI-612BA-5NE34)
Up to 4TB DDR5 (per node; SBI-612B-5NE34)

EDSFF E3.S



MBA-315R-5G

Extreme scale-out density, efficiency optimized for lightweight & distributed workloads

AI Inference, VDI, Video Streaming, Cloud Gaming

1 NVIDIA RTX PRO 4500 Blackwell (per node)

Single AMD EPYC 4005/4004 Series (per node)

Up to 192GB 5600MT/s ECC/non-ECC DDR5 DIMM (per node)

U.2 NVMe (optional)

*Contact your Supermicro representative for more information



Full-Stack AI Solutions with Supermicro and NVIDIA

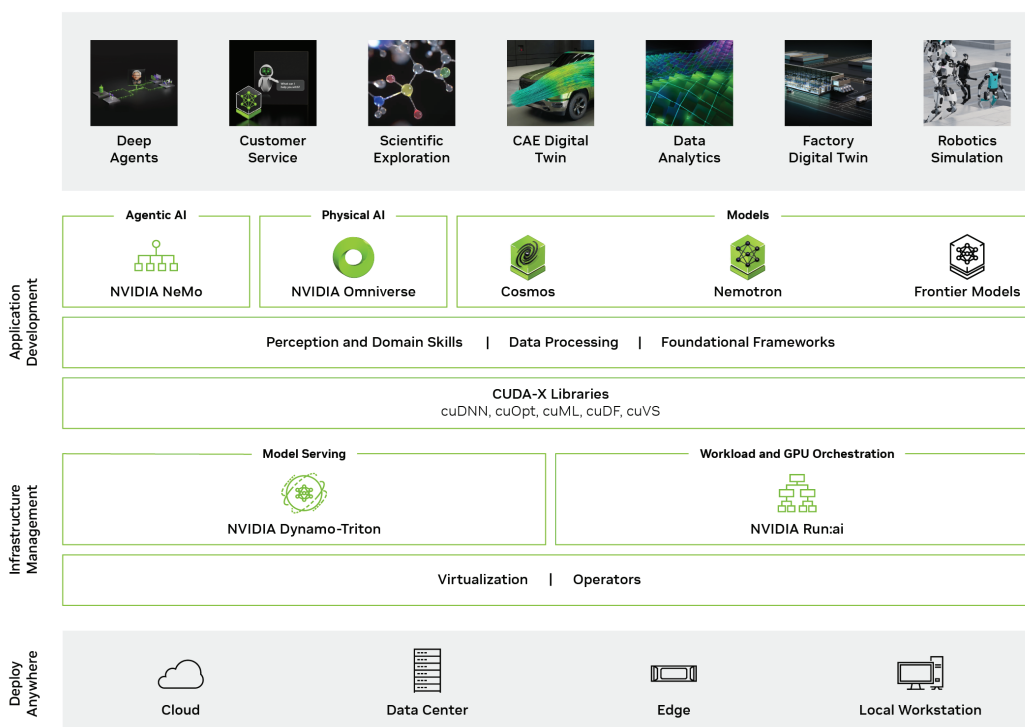
Complete, full-stack solutions with Supermicro and NVIDIA

Supermicro NVIDIA-Certified systems guarantee compatibility with Blackwell GPUs, NVIDIA networking, NVAIE software, and NVIDIA Omniverse to create turnkey AI solutions. Supermicro NVIDIA-Certified Systems are also NVIDIA accelerated application-ready, supporting a wide range of certified third-party applications to accelerate enterprise workloads. Supermicro also offers storage solutions with leading ISVs based on NVIDIA's AI Data Platform reference architecture, which incorporate GPU acceleration into the storage platform to accelerate data vectorization, vector database searching, and inference workloads. Supermicro NVIDIA RTX PRO Blackwell systems are available with curated NVIDIA software packages, reducing the complexity of creating a full-stack AI development solution.

NVIDIA AI Enterprise brings together optimized microservices, frameworks and libraries for AI development with advanced GPU orchestration and infrastructure management into a production-grade software suite to power your business. It enables you to deploy leading open-source tools and AI models with confidence, lowers infrastructure costs and reduces time to market while ensuring reliable, secure, and scalable operations.

NVIDIA Run:ai accelerates AI operations with dynamic orchestration across the AI life cycle, maximizing GPU efficiency, scaling workloads, and integrating seamlessly into hybrid AI infrastructure with zero manual effort.

Special promotional pricing is now available for NVIDIA enterprise software and Run:ai software bundles purchased in combination with Supermicro NVIDIA-Certified Systems and NVIDIA RTX PRO Blackwell GPUs. Contact your Supermicro representative for package details.



Supermicro JumpStart and NVIDIA LaunchPad

Test Supermicro Systems with NVIDIA RTX PRO™ 6000 Blackwell Server Edition GPUs

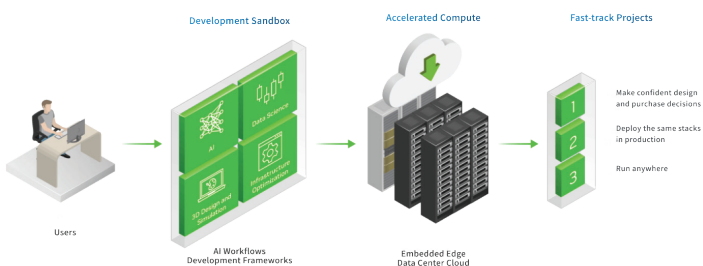
Unleash optimal performance with Supermicro’s AI-optimized systems featuring NVIDIA RTX PRO 6000 Blackwell Server Edition GPUs, delivering breakthrough multi-workload acceleration for the most demanding generative AI, physical AI, graphics, scientific computing, and video applications.

Supermicro’s JumpStart program offers remote access to systems with a broad range of NVIDIA GPUs for qualified customers to validate, test, and benchmark their workloads, in a few simple steps.



<https://www.supermicro.com/en/jumpstart/nvidia>

NVIDIA LaunchPad with Supermicro NVIDIA AI Systems



Unlock the full potential of AI development with NVIDIA LaunchPad on Supermicro servers. Experience a comprehensive, hands-on journey from infrastructure optimization to application deployment. Test your workloads on cutting-edge, production-ready systems powered by NVIDIA AI – all at no cost – before making your infrastructure investment.

With NVIDIA LaunchPad, you’ll have access to the latest NVIDIA enterprise hardware and software. And following a successful experience, you’ll gain more confidence in your design and purchase decisions and be able to fast-track your project.



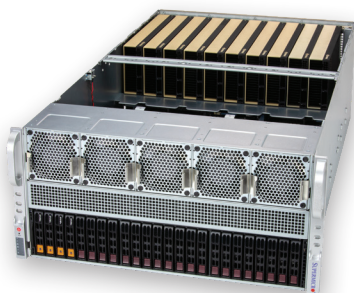
<https://www.supermicro.com/en/accelerators/nvidia/launchpad>



NVIDIA RTX PRO Blackwell Server Edition Solutions



MODEL	AS -4125GS-TNRT AS -4125GS-TNRT2	SYS-422GA-NRT	SYS-522GA-NRT
Processor Support	Dual processors AMD EPYC™ 9004/9005 series processors Up to 160C/320T; Up to 512MB Cache per CPU	Dual processors Intel® Xeon® 6900 series processors with P-cores Up to 128C/256T; Up to 504MB Cache per CPU	Dual processors Intel® Xeon® 6900 series processors with P-cores Up to 128C/256T; Up to 504MB Cache per CPU
System Memory (Max.)	Slot Count: 24 DIMM slots 1DPC: Up to 6TB 4800MT/s ECC DDR5 RDIMM (AMD EPYC™ 9004 series processor) 1DPC: Up to 6TB 6000MT/s ECC DDR5 RDIMM (AMD EPYC™ 9005 series processor)	Slot Count: 24 DIMM slots 1DPC: Up to 6TB 6400MT/s ECC DDR5 RDIMM 1DPC: Up to 6TB 8800MT/s ECC DDR5 MRDIMM	Slot Count: 24 DIMM slots 1DPC: Up to 6TB 6400MT/s ECC DDR5 RDIMM 1DPC: Up to 6TB 8800MT/s ECC DDR5 MRDIMM
Expansion Slots	AS -4125GS-TNRT Default 11 PCIe 5.0 x16 FHFL slots Optional 13 PCIe 5.0 x16 FHFL slots AS -4125GS-TNRT2 Default 9 PCIe 5.0 x16 FHFL slots Optional 10 PCIe 5.0 x16 FHFL slots	13 PCIe 5.0 x16 FHFL slots	13 PCIe 5.0 x16 FHFL slots
GPU Support	Up to 8 NVIDIA RTX PRO 4500 Blackwell	Up to 8 NVIDIA RTX PRO 6000 Blackwell	Up to 8 NVIDIA RTX PRO 6000 Blackwell Up to 8 NVIDIA RTX PRO 4500 Blackwell
Connectivity	2 RJ45 10GbE	2 RJ45 10GbE with Intel® X710-AT2	2 RJ45 10GbE with Intel® X710-AT2
Drive Bays	AS -4125GS-TNRT2 2 front hot-swap 2.5" SATA drive bays 8 front hot-swap 2.5" NVMe drive bays AS -4125GS-TNRT 2 front hot-swap 2.5" SATA drive bays 4 front hot-swap 2.5" NVMe drive bays M2: 1 M.2 PCIe 3.0 x4 NVMe slot (M-key)	Option A 8 front hot-swap E3.S 1T PCIe 5.0 x4 NVMe drive bays Option B 8 front hot-swap E3.L 1T PCIe 5.0 x4 NVMe drive bays Option C 8 front hot-swap 2.5" PCIe 5.0 x4 NVMe drive bays M2: 2 M.2 NVMe slots (M-key)	Default 24 front hot-swap 2.5" PCIe 5.0 NVMe drive bays M2: 2 M.2 NVMe slots (M-key)
Max Power Supply	4x 2000W Redundant (3 + 1) Titanium Level (96%)	4x 3200W Redundant (3 + 1) Titanium Level (96%)	6x 2700W Redundant (4 + 2) Titanium Level (96%)
Cooling System	8 heavy duty fans with optimal fan speed control	10x 8cm heavy duty fans with optimal fan speed control	10 heavy duty fans with optimal fan speed control
Form Factor	4U Rackmount	4U Rackmount	5U Rackmount



MODEL	AS -5126GS-TNRT AS -5126GS-TNRT2	SYS-422GL-NR SYS-422GL-FNR2	SYS-222C-TN
Processor Support	Dual processors AMD EPYC™ 9004/9005 series processors Up to 192C/384T; Up to 512MB Cache per CPU	Dual processors Intel® Xeon® 6900 series processors with P-cores Up to 72C/144T	Dual processors Intel® Xeon® 6700/6500 series processors with P-cores Up to 86C/172T; Up to 336MB Cache per CPU
System Memory (Max.)	Slot Count: 24 DIMM slots 1DPC: Up to 6TB 6400MT/s ECC DDR5 RDIMM (AMD EPYC™ 9005 Series Processor) 1DPC: Up to 6TB 4800MT/s ECC DDR5 RDIMM (AMD EPYC™ 9004 Series Processor)	Slot Count: 24 DIMM slots 1DPC: 6.0TB 6400MT/s ECC DDR5 RDIMM 1DPC: 6.0TB 8800MT/s ECC DDR5 MRDIMM	Slot Count: 32 DIMM slots 1DPC: Up to 2TB 6400MT/s ECC DDR5 RDIMM 2DPC: Up to 4TB 5200MT/s ECC DDR5 RDIMM
Expansion Slots	Default (TNRT) 9 PCIe 5.0 x16 FHFL double-width slots Optional (TNRT) 10 PCIe 5.0 x16 FHFL double-width slots Default (TNRT2) 13 PCIe 5.0 x16 FHFL slots Optional (TNRT2) 11 PCIe 5.0 x16 FHFL slots	Default 8 PCIe 5.0 x16 FH double-width slots 4 PCIe 5.0 x16 HHHL slots Optional 1 PCIe 5.0 x16 FHHL slot	Default 4 PCIe 5.0 x16 (in x16) FHFL slots 1 PCIe 5.0 x8 (in x16) FHFL slot Option A 2 PCIe 5.0 x16 (in x16) FHFL slots Option B 6 PCIe 5.0 x16 (in x16) FHFL slots
GPU Support	Up to 8 NVIDIA RTX PRO 6000 Blackwell Up to 8 NVIDIA RTX PRO 4500 Blackwell	Up to 8 NVIDIA RTX PRO 6000 Blackwell Up to 8 NVIDIA RTX PRO 4500 Blackwell	Up to 2 NVIDIA RTX PRO 6000 Blackwell Up to 4 NVIDIA RTX PRO 4500 Blackwell
Connectivity	2 RJ45 10GbE	1 RJ45 1GBASE-T with ASPEED AST2600	via AIOM
Drive Bays	Default (TNRT) 2 front hot-swap 2.5" SATA drive bays 4 front hot-swap 2.5" NVMe drive bays Option A (TNRT) 2 front hot-swap 2.5" SATA drive bays Default (TNRT2) 2 front hot-swap 2.5" SATA drive bays 8 front hot-swap 2.5" NVMe drive bays	Default 8 front hot-swap E1.S NVMe drive bays M2: 2 M.2 PCIe 4.0 x4 NVMe slots (M-key 2280 (default))	Default 24 front hot-swap 2.5" NVMe/SAS*/SATA* drive bays *Optional M2: 2 M.2 PCIe 5.0 x2 NVMe slots (M-key 22110(default)/2280; VROC required for RAID)
Power Supply	6x 2700W Redundant (4 + 2) Titanium Level (96%)	4x 3200W Redundant (3 + 1) Titanium Level (96%)	2x 1300W/2000W/2200W/3200W Redundant (1 + 1) Titanium Level (96%)
Cooling System	Up to 10 heavy duty fans with optimal fan speed control	10 80mm fans	4x 8cm heavy duty fans with optimal fan speed control
Form Factor	5U Rackmount	4U Rackmount	2U Rackmount



NVIDIA RTX PRO Blackwell Server Edition Solutions



MODEL	ARS-222GL-NR	AS -2015CS-TNR	SYS-222H-TN
Processor Support	Dual processors NVIDIA Vera CPU C2 (88-core)	Single processor AMD EPYC™ 9004/9005 Series Processors up to 160C/320T	Dual processors Intel® Xeon® 6700/6500 series processors with P-cores Up to 86C/172T; Up to 336MB Cache per CPU
System Memory (Max.)	Onboard Memory Up to 1.5TB ECC LPDDR5X	Slot Count: 12 DIMM Slots Max Memory (1DPC): Up to 3TB 4800MT/s ECC DDR5 RDIMM (AMD EPYC™ 9004 Series Processor, MB R1.x/R2.0/R2.01) Max Memory (1DPC): Up to 3TB 6000MT/s ECC DDR5 RDIMM (AMD EPYC™ 9005 Series Processor, MB R2.0) Max Memory (1DPC): Up to 3TB 6400MT/s ECC DDR5 RDIMM (AMD EPYC™ 9005 Series Processor, MB R2.01)	Slot Count: 32 DIMM slots 1DPC: Up to 4TB 6400MT/s ECC DDR5 RDIMM 1DPC: Up to 1TB 8000MT/s ECC DDR5 MRDIMM 2DPC: Up to 8TB 5200MT/s ECC DDR5 RDIMM
Expansion Slots	Default 3 PCIe 6.0 x16 FHFL double-width slots	Default 2 PCIe 5.0 x16 FHFL slots 2 PCIe 5.0 x16 FHHL slots 2 PCIe 5.0 x16 AIOM slots (OCP 3.0 compatible) Option A 2 PCIe 5.0 x8 FHFL slots	Option A 4 PCIe 5.0 x16 FH/10.5"L double-width slots 1 PCIe 5.0 x16 AIOM slot (OCP 3.0 compatible) 1 PCIe 5.0 x8 AIOM slot (OCP 3.0 compatible) Option B 8 PCIe 5.0 x8 (in x16) FH/10.5"L slots 1 PCIe 5.0 x16 AIOM slot (OCP 3.0 compatible) 1 PCIe 5.0 x8 AIOM slot (OCP 3.0 compatible)
GPU Support	4 NVIDIA RTX PRO 6000 Blackwell 6 NVIDIA RTX PRO 4500 Blackwell	2 NVIDIA RTX PRO 4500 Blackwell	2 NVIDIA RTX PRO 4500 Blackwell
Connectivity	1 RJ45 1 GbE Dedicated BMC LAN ports	1 RJ45 1 GbE Dedicated BMC LAN ports	via AIOM
Drive Bays	8 front hot-swap E1.S NVMe drive bays	Default 12 front hot-swap 3.5"/2.5" SATA drive bays Option A 4 front hot-swap 2.5" PCIe 5.0 NVMe* drive bays Option B 12 front hot-swap 3.5"/2.5" SAS* drive bays	Default 8 front hot-swap 2.5" NVMe*/SAS*/SATA* drive bays Option A 16 front hot-swap 2.5" NVMe*/SAS*/SATA* drive bays Option B 24 front hot-swap 2.5" NVMe*/SAS*/SATA* drive bays *Optional M2: 2 M.2 PCIe 5.0 x2 NVMe slots (M-key 2280/22110)
Power Supply	4x 3000W Redundant(3 + 1) Titanium Level (96%)	2x 1200W Redundant (1 + 1) Titanium Level (96%)	2x 1200W/1600W/2000W/2600W Redundant (1 + 1) Titanium Level (96%) hot-plug
Cooling System	Up to 5x 8cm heavy duty fans with optimal fan speed control	Up to 3x 8cm heavy duty fans with optimal fan speed control	4x 8cm heavy duty fans with optimal fan speed control
Form Factor	2U Rackmount	2U Rackmount	2U Rackmount



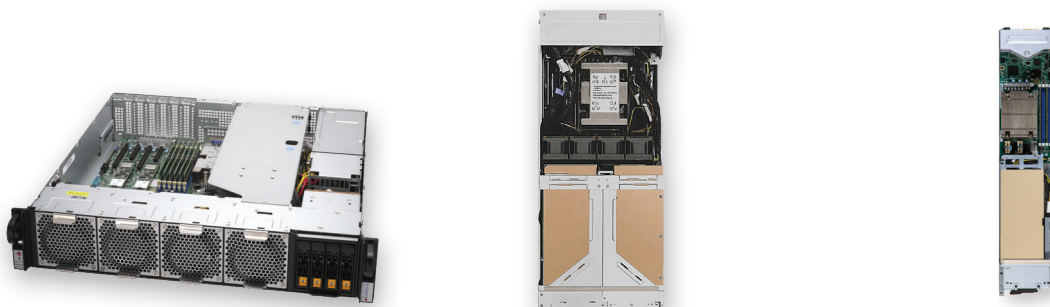
MODEL	AS -2126HS-TN AS -2015HS-TNR	SYS-122H-TN	SYS-221GE-NR SYS-221GE-FNR2	SYS-512B-WR
Processor Support	Dual processor (AS -2126HS-TN) Single processor (AS -2015HS-TNR) AMD EPYC™ 9004/9005 Series Processors up to 384C/768T	Dual processors Intel® Xeon® 6700/6500 series processors with P-cores Up to 86C/172T; Up to 336MB Cache per CPU	Dual processors 5th Gen Intel® Xeon® / 4th Gen Intel® Xeon® Scalable processors Up to 64C/128T; Up to 320MB Cache per CPU	Single processor Intel® Xeon® 6700/6500 series processors with P-cores Up to 86C/172T; Up to 336MB Cache
System Memory (Max.)	Slot Count: 24 DIMM slots 1DPC: Up to 3TB 5200MT/s ECC DDR5 RDIMM (AMD EPYC™ 9005 Series Processor) 2DPC: Up to 6TB 4400MT/s ECC DDR5 1R RDIMM (AMD EPYC™ 9005 Series Processor) 2DPC: Up to 6TB 4000MT/s ECC DDR5 2R RDIMM (AMD EPYC™ 9005 Series Processor)	Slot Count: 32 DIMM slots 1DPC: Up to 4TB 6400MT/s ECC DDR5 RDIMM 1DPC: Up to 1TB 8000MT/s ECC DDR5 MRDIMM 2DPC: Up to 8TB 5200MT/s ECC DDR5 RDIMM	Slot Count: 32 DIMM slots 1DPC: Up to 4TB 5600MT/s ECC DDR5 MRDIMM 2DPC: Up to 8TB 4400MT/s ECC DDR5	Slot Count: 8 DIMM slots/8 Channels 1DPC: Up to 2TB 6400MT/s ECC DDR5 RDIMM
Expansion Slots	Default 4 PCIe 5.0 x16 FHFL slots or 8 PCIe 5.0 x8 FHFL slots (mix and match) 1 PCIe 5.0 x16 AIOM slot (OCP 3.0 compatible)	Default 1 PCIe 5.0 x16 FHHL slot 2 PCIe 5.0 x16 FH/10.5"L slots 1 PCIe 5.0 x16 AIOM slot (OCP 3.0 compatible)	Default (NR) 4 PCIe 5.0 x16 FHFL double-width slots 3 PCIe 5.0 x16 FHFL slots Default (FNR2) 1 PCIe 5.0 x16 HHFL slot 3 PCIe 5.0 x16 FHFL slots	Default 2 PCIe 5.0 x16 FHFL slots 1 PCIe 5.0 x8 (in x16) LP slot
GPU Support	2 NVIDIA RTX PRO 4500 Blackwell	1 NVIDIA RTX PRO 4500 Blackwell	4 NVIDIA RTX PRO 6000 Blackwell	1 NVIDIA RTX PRO 4500 Blackwell
Connectivity	via AIOM	via AIOM	1 RJ45 1GbE (NR)	2 RJ45 1GbE with Intel® I210
Drive Bays	Default (AS -2126HS-TN) 8 front hot-swap 2.5" NVMe/SATA* drive bays Optional (AS -2126HS-TN) 24 front hot-swap 2.5" NVMe*/SATA* drive bays Default (AS -2015HS-TNR) 12 front hot-swap 3.5"/2.5" NVMe*/ SAS*/SATA* drive bays *Optional	Default 8 front hot-swap 2.5" NVMe*/SAS*/ SATA* drive bays Optional 12 front hot-swap 2.5" NVMe*/SAS*/ SATA* drive bays *Optional M2: 2 M.2 PCIe 5.0 x2 NVMe slots (M-key 2280/22110)	Default (NR) 8 front hot-swap E1.S NVMe drive bays Default (FNR2) 8 rear hot-swap E1.S NVMe drive bays	Default 4 front hot-swap 3.5" SAS/SATA drive bays Optional 4 front hot-swap 3.5"/2.5" PCIe 5.0 x4 NVMe/SAS/SATA drive bays 2 M.2 PCIe 5.0 x2 NVMe slots (M-key 2280/22110; VROC required for RAID)
Power Supply	2x 2000W Redundant (1 + 1) Titanium Level (96%) (AS -2126HS-TN) 2x 1200W Redundant (1 + 1) Titanium Level (96%) (AS -2015HS-TNR)	2x 1200W/1600W/2000W/2600W Redundant (1 + 1) Titanium Level (96%) hot-plug	3x 2000W Redundant Titanium Level (96%) power supplies (NR) 4x 2000W Redundant Titanium Level (96%) (FNR2)	2x 860W Redundant (1 + 1) Titanium Level (94%) hot-plug
Cooling System	Up to 6x 6cm counter-rotating fans (AS -2126HS-TN) Up to 4x 8cm heavy duty fans with optimal fan speed control (AS -2015HS-TNR)	Up to 8 counter-rotating 40x40x56mm fans	Up to 6x 6cm heavy duty fans with optimal fan speed control (NR) Up to 8x 6cm heavy duty fans with optimal fan speed control (FNR2)	Up to 1 AOC cooling fans (optional) Up to 5 middle cooling PWM 40x40x56mm fans
Form Factor	2U Rackmount	1U Rackmount	2U Rackmount	1U Rackmount



NVIDIA RTX PRO Blackwell Server Edition Solutions



MODEL	SYS-322GA-NR	SYS-222HE-TN	SYS-212GB-NR SYS-212GB-FNR
Processor Support	Dual processors Intel® Xeon® 6900 series processors with P-cores Up to 128C/256T; 504MB Cache per CPU	Dual processors Intel® Xeon® 6700/6500 series processors with P-cores Up to 144C/144T; Up to 108MB Cache per CPU	Single processor Intel® Xeon® 6700/6500 series processors with P-cores Up to 80C/160T; Up to 336MB Cache
System Memory (Max.)	Slot Count: 24 DIMM slots/1 Channels 1DPC: 6TB 6400MT/s ECC DDR5 RDIMM 1DPC: 6TB 8800MT/s ECC DDR5 MRDIMM	Slot Count: 32 DIMM slots 1DPC: Up to 2TB 6400MT/s ECC DDR5 RDIMM 2DPC: Up to 4TB 5200MT/s ECC DDR5 RDIMM	Slot Count: 16 DIMM slots/8 Channels 1DPC: Up to 1TB 6400MT/s ECC DDR5 RDIMM 1DPC: Up to 512GB 8000MT/s ECC DDR5 MRDIMM 2DPC: Up to 2TB 5200MT/s ECC DDR5 RDIMM
Expansion Slots	Default 8 PCIe 5.0 x16 FHFL double-width slots Option A 8 PCIe 5.0 x16 FHFL double-width slots 2 PCIe 5.0 x16 FHFL slots Option B 20 PCIe 5.0 x8 (in x16) FHFL slots	Option A 3 PCIe 5.0 x16 (in x16) FH/10.5"L double-width slots 1 PCIe 5.0 x16 (in x16) FHHL slot 2 PCIe 5.0 x16 AIOM slots (OCP 3.0 compatible) Option B 6 PCIe 5.0 x8 (in x16) FH/10.5"L slots 2 PCIe 5.0 x8 (in x16) FHHL slots 2 PCIe 5.0 x16 AIOM slots (OCP 3.0 compatible)	Default 4 PCIe 5.0 x16 FHFL double-width slots 3 PCIe 5.0 x16 FHFL slots
GPU Support	Up to 4 NVIDIA RTX PRO 6000 Blackwell Up to 8 NVIDIA RTX PRO 4500 Blackwell	Up to 3 NVIDIA RTX PRO 4500 Blackwell	2 NVIDIA RTX PRO 6000 Blackwell Up to 4 NVIDIA RTX PRO 6000 Blackwell (SYS-212GB-FNR)
Connectivity	1 RJ45 1 GbE Dedicated BMC LAN ports	via AIOM	1 RJ45 1GbE dedicated BMC LAN port
Drive Bays	Option A 6 front hot-swap E1.S PCIe 5.0 x4 NVMe drive bays Option B 14 front hot-swap E1.S PCIe 5.0 x4 NVMe drive bays Option C 2 front hot-swap 2.5" PCIe 5.0 x4 NVMe drive bays Option D 4 front hot-swap 2.5" PCIe 5.0 x4 NVMe drive bays Option E 6 front hot-swap 2.5" PCIe 5.0 x4 NVMe drive bays	Default: 6 front hot-swap 2.5" NVMe*/SAS*/SATA* drive bays Option A: 6 front hot-swap 2.5" NVMe*/SAS*/SATA* drive bays, 2 rear hot-swap 2.5" NVMe* drive bays Option B: 6 front hot-swap 2.5" NVMe*/SAS*/SATA* drive bays, 4 rear hot-swap 2.5" NVMe* drive bays *Optional M2: 2 M.2 PCIe 5.0 x2 NVMe slots (M-key 2280/22110/25110)	4 front hot-swap E1.S NVMe drive bays (SYS-212GB-NR) 4 front hot-swap E1.S NVMe drive bays (SYS-212GB-FNR)
Power Supply	3x 3200W Redundant (2 + 1) Titanium Level (96%) hot-plug	2x 2000W Redundant (1 + 1) Titanium Level (96%)	3x 2000W Redundant (2 + 1) Titanium Level (96%) (SYS-212GB-NR) 2x 2700W Redundant (2 + 1) Titanium Level (96%) (SYS-212GB-FNR)
Cooling System	Up to 5 front 8cm fans Up to 6 internal 6cm fans	6 counter-rotating 60x60x56mm fans	Up to 6x 6cm heavy duty fans with optimal fan speed control (SYS-212GB-NR) 5x 8cm heavy duty fans with optimal fan speed control (SYS-212GB-FNR)
Form Factor	3U Rackmount	2U Rackmount	2U Rackmount



MODEL	AS -2116S-TNRT AS -2116S-FTNRT	SBI-612BA-5NE34 SBI-612B-5NE34	MBA-315R-5G
Processor Support	Single processor AMD EPYC 9005 Series Up to 192C/384T; Up to 384MB Cache	Single Socket BR (LGA-7529) (SBI-612BA-5NE34) Intel® Xeon® 6900 series processors with P-cores Single Socket BR (LGA-4710) (SBI-612B-5NE34) Intel® Xeon® 6700/6500 series processors with P-cores or E-cores	Single Socket AM5 (LGA-1718) AMD EPYC™ 4005/4004 Series Processor
System Memory (Max.)	Slot Count: 12 DIMM slots/12 Channels 1DPC: Up to 3TB 6400MT/s ECC DDR5 RDIMM	12 DIMM slots (SBI-612BA-5NE34) Up to 3TB 6400MT/s DDR5 RDIMM or 1.5TB 8800MT/s DDR5 MRDIMM 16 DIMM slots (SBI-612B-5NE34) Up to 4TB 6400MT/s DDR5 RDIMM or 512GB 8800MT/s DDR5 MRDIMM	4 DIMM slots 1DPC: Up to 192GB 5600MT/s ECC/non-ECC DDR5 UDIMM
Expansion Slots	Default 3 PCIe 5.0 x16 (in x16) HHFL slots 2 PCIe 5.0 x8 (in x8) HHFL slots Optional 1 PCIe 5.0 x16 (in x16) FHFL double-width slot	2 PCIe 5.0 x16 slots	1 PCIe 5.0 x16 slot
GPU Support	1 NVIDIA RTX PRO 4500 Blackwell	2 NVIDIA RTX PRO 6000 Blackwell	1 NVIDIA RTX PRO 4500 Blackwell
Connectivity	2 RJ45 10GBASE-T with Broadcom® BCM57416	Onboard Dual 25G Ethernet 1 expansion slot w/ optional mezzanine cards	
Drive Bays	4 front hot-swap 2.5" NVMe*/SATA drive bays	4 Hot-swap E3.S NVMe SSDs 2 M.2 NVMe SSD (SBI-612BA-5NE34) 1 M.2 NVMe SSD (SBI-612B-5NE34)	2 optional U.2 NVMe drive bays 2 M.2 NVMe SSD slots
Power Supply	2x 1000W Redundant (1 + 1) Titanium Level (94%) hot-plug	via enclosure	via enclosure
Cooling System	Up to 4x 8cm fans	via enclosure	via enclosure
Form Factor	2U Rackmount	Double-wide 6U blade in 6U enclosure	Double-wide 3U blade in 6U enclosure

Supermicro Enterprise AI Solutions



Worldwide Headquarters

Super Micro Computer, Inc.
980 Rock Ave.
San Jose, CA 95131, USA
Tel: +1-408-503-8000

EMEA Headquarters

Super Micro Computer, B.V.
Het Sterrenbeeld 12, 5215 ML,
's-Hertogenbosch, The Netherlands
Tel: +31-73-640-0390

APAC Headquarters

Super Micro Computer, Taiwan Inc.
3F, No. 150, Jian 1st Rd., Zhonghe Dist.,
New Taipei City 235, Taiwan
Tel: +886-2-8226-3990

www.supermicro.com

© Super Micro Computer, Inc. Specifications subject to change without notice. All other brands and names are the property of their respective owners.

MKT-0002-NV-RTX-Blackwell-Brochure_R02



Please Recycle