



H14SSL-N  
H14SSL-NT

USER'S MANUAL

Revision 1.0a (MNL-2821)

The information in this User's Manual has been carefully reviewed and is believed to be accurate. The vendor assumes no responsibility for any inaccuracies that may be contained in this document, and makes no commitment to update or to keep current the information in this manual, or to notify any person or organization of the updates. Note: For the most up-to-date version of this manual, see our website at <https://www.supermicro.com>.

Super Micro Computer, Inc. ("Supermicro") reserves the right to make changes to the product described in this manual at any time and without notice. This product, including software and documentation, is the property of Supermicro and/or its licensors, and is supplied only under a license. Any use or reproduction of this product is not allowed, except as expressly permitted by the terms of said license.

IN NO EVENT WILL Super Micro Computer, Inc. BE LIABLE FOR DIRECT, INDIRECT, SPECIAL, INCIDENTAL, SPECULATIVE OR CONSEQUENTIAL DAMAGES ARISING FROM THE USE OR INABILITY TO USE THIS PRODUCT OR DOCUMENTATION, EVEN IF ADVISED OF THE POSSIBILITY OF SUCH DAMAGES. IN PARTICULAR, SUPER MICRO COMPUTER, INC. SHALL NOT HAVE LIABILITY FOR ANY HARDWARE, SOFTWARE, OR DATA STORED OR USED WITH THE PRODUCT, INCLUDING THE COSTS OF REPAIRING, REPLACING, INTEGRATING, INSTALLING OR RECOVERING SUCH HARDWARE, SOFTWARE, OR DATA.

Any disputes arising between manufacturer and customer shall be governed by the laws of Santa Clara County in the State of California, USA. The State of California, County of Santa Clara shall be the exclusive venue for the resolution of any such disputes. Supermicro's total liability for all claims will not exceed the price paid for the hardware product.

FCC Statement: This equipment has been tested and found to comply with the limits for a Class A or Class B digital device pursuant to Part 15 of the FCC Rules. These limits are designed to provide reasonable protection against harmful interference when the equipment is operated in industrial environment for Class A device or in residential environment for Class B device. This equipment generates, uses, and can radiate radio frequency energy and, if not installed and used in accordance with the manufacturer's instruction manual, may cause harmful interference with radio communications. Operation of this equipment in a residential area is likely to cause harmful interference, in which case you will be required to correct the interference at your own expense.

California Best Management Practices Regulations for Perchlorate Materials: This Perchlorate warning applies only to products containing CR (Manganese Dioxide) Lithium coin cells. "Perchlorate Material-special handling may apply. See <https://www.dtsc.ca.gov/hazardouswaste/perchlorate>".



WARNING: This product can expose you to chemicals including lead, known to the State of California to cause cancer and birth defects or other reproductive harm. For more information, go to <https://www.P65Warnings.ca.gov>.



AVERTISSEMENT : Ce produit peut vous exposer à des agents chimiques, y compris le plomb, identifié par l'État de Californie comme pouvant causer le cancer, des malformations congénitales ou d'autres troubles de la reproduction. Pour de plus amples informations, prière de consulter <https://www.P65Warnings.ca.gov>.

The products sold by Supermicro are not intended for and will not be used in life support systems, medical equipment, nuclear facilities or systems, aircraft, aircraft devices, aircraft/emergency communication devices or other critical systems whose failure to perform be reasonably expected to result in significant injury or loss of life or catastrophic property damage. Accordingly, Supermicro disclaims any and all liability, and should buyer use or sell such products for use in such ultra-hazardous applications, it does so entirely at its own risk. Furthermore, buyer agrees to fully indemnify, defend and hold Supermicro harmless for and against any and all claims, demands, actions, litigation, and proceedings of any kind arising out of or related to such ultra-hazardous use or sale.

Manual Revision 1.0a

Release Date: November 07, 2025

Unless you request and receive written permission from Super Micro Computer, Inc., you may not copy any part of this document. Information in this document is subject to change without notice. Other products and companies referred to herein are trademarks or registered trademarks of their respective companies or mark holders.

Copyright © 2025 by Super Micro Computer, Inc.  
All rights reserved.

**Published in the United States of America**

# Preface

## About This Manual

This manual is written for professional system integrators and PC technicians. It provides information for the installation and use of the H14SSL-N/NT motherboard. Installation and maintenance should be performed by certified service technicians only.

## Notes

For your system to work properly, follow the links below to download all necessary drivers/utilities and the user's manual for your server.

- Supermicro product manuals: <https://www.supermicro.com/support/manuals>
- Product drivers and utilities: <https://www.supermicro.com/wdl>
- Product safety info: [https://www.supermicro.com/about/policies/safety\\_information.cfm](https://www.supermicro.com/about/policies/safety_information.cfm)
- A secure data deletion tool designed to fully erase all data from storage devices can be found on our website:  
[https://www.supermicro.com/about/policies/disclaimer.cfm?url=/wdl/utility/Lot9\\_Secure\\_Data\\_Deletion\\_Utility](https://www.supermicro.com/about/policies/disclaimer.cfm?url=/wdl/utility/Lot9_Secure_Data_Deletion_Utility)
- Frequently Asked Questions: <https://www.supermicro.com/FAQ/index.php>
- If you still have questions after referring to our FAQs, contact our support team. Region-specific Technical Support email addresses can be found at: "[Contacting Supermicro](#)" on page 9
- If you have any feedback on Supermicro product manuals, contact our writing team at: [Techwriterteam@supermicro.com](mailto:Techwriterteam@supermicro.com)

This manual may be periodically updated without notice. Check the Supermicro website for possible updates to the manual revision level.

## Conventions Used in the Manual

Special attention should be given to the following symbols for proper installation and to prevent damage done to the components or injury to yourself.



**Warning!** Indicates important information given to prevent equipment/property damage or personal injury.



**Warning!** Indicates high voltage may be encountered while performing a procedure.

**Important:** Important information given to ensure proper system installation or to relay safety precautions.

**Note:** Additional information given to differentiate various models or to provide information for proper system setup.

# Contents

<b>Contacting Supermicro</b> .....	<b>9</b>
<b>Chapter 1: Introduction</b> .....	<b>10</b>
1.1 Quick Reference .....	11
Motherboard Layout .....	11
Quick Reference Table .....	14
System Block Diagram .....	16
Motherboard Features .....	16
1.2 Platform Overview .....	19
1.3 Special Features .....	20
Recovery from AC Power Loss .....	20
1.4 System Health Monitoring .....	21
Onboard Voltage Monitors .....	21
Fan Status Monitor with Firmware Control .....	21
Environmental Temperature Control .....	21
1.5 ACPI Features .....	22
<b>Chapter 2: Component Installation</b> .....	<b>23</b>
2.1 Static-Sensitive Devices .....	25
Precautions .....	25
Unpacking .....	25
2.2 Motherboard Installation .....	26
Location of Mounting Holes .....	26
Installing the Motherboard .....	29
2.3 Processor and Heatsink Installation .....	31
Preparing the Processor Socket .....	31
Installing the Processor into the Frame .....	33
Installing the Heatsink .....	36
Uninstalling the Heatsink and Processor .....	39
2.4 Memory Support and Installation .....	40
Memory Support .....	40
General Guidelines for Optimizing Memory Performance .....	41
DIMM Population .....	41

DIMM Installation .....	41
DIMM Removal .....	44
2.5 Battery Removal and Installation .....	45
Battery Removal .....	45
Proper Battery Disposal .....	45
Battery Installation .....	45
2.6 Connections, Jumpers, and LEDs .....	46
Power Supply and Power Connections .....	46
Main Power Supply Connector (JPWR3) .....	46
12 V 8-pin Auxilliary Power Connector (JPWR1, JPWR2) .....	46
JF1 Front Control Panel Headers .....	47
Headers and Connections .....	47
Chassis Intrusion .....	47
COM1 Header .....	48
Disk-On-Module Power Connectors (JSD1 and JSD2) .....	48
IPMB (Intelligent Platform Management Bus) Header (JIPMB1) .....	49
NCSI Header (JNCSI1) .....	49
Onboard Battery (BT1) .....	49
Onboard Fan Headers (FAN1–FAN4, FANA, FANB) .....	50
Power System Management Bus (SMBus/I <sup>2</sup> C) Header (PWRI2C) .....	50
SATA (SATA8–15) .....	50
TPM/Port 80 Header .....	51
USB Ports (USB4–USB5) .....	51
VGA Port .....	52
Jumper Settings .....	52
CMOS Clear .....	53
LAN Enable/Disable (JPL1) .....	53
JMCI03 NVMe/SATA Switch (JSATA1) .....	54
LED Indicators .....	54
LAN Port LEDs .....	54
BMC Heartbeat LED .....	55
BMC LAN LEDs .....	55
Onboard Power LED (LED9) .....	56
Unit ID (UID) LED .....	56

<b>Chapter 3: Troubleshooting</b> .....	<b>58</b>
3.1 Troubleshooting Procedures .....	59
Before Power On .....	59
No Power .....	59
No Video .....	59
System Boot Failure .....	59
Memory Errors .....	60
Losing the System's Setup Configuration .....	60
If the System Becomes Unstable .....	60
3.2 Technical Support Procedures .....	62
3.3 Motherboard Battery .....	63
3.4 Where to Get Replacement Components .....	64
3.5 Returning Merchandise for Service .....	65
3.6 Feedback .....	66
<b>Chapter 4: UEFI BIOS</b> .....	<b>67</b>
4.1 Introduction .....	68
Updating BIOS .....	68
Starting the Setup Utility .....	68
4.2 Main Setup .....	70
4.3 Advanced Setup Configurations .....	72
Boot Feature Menu .....	72
CPU Configuration Menu .....	74
NB Configuration .....	76
ACPI Settings Menu .....	79
Super IO Configuration Menu .....	79
Serial Port 1 Configuration Menu .....	79
Serial Port 2 Configuration Menu .....	80
Serial Port Console Redirection Menu .....	80
PCIe/PCI/PnP Configuration Menu .....	82
USB Configuration .....	84
Network Configuration Menu .....	84
SATA Configuration Menu .....	87
HTTP Boot Configuration Menu .....	87
Supermicro KMS Server Configuration Menu .....	88

---

---

Super-Guardians Configuration Menu .....	90
System Diagnostics Configuration .....	92
Supermicro Network Adapter Menu .....	92
TLS Authenticate Configuration Menu .....	96
RAM Disk Configuration .....	96
Driver Health Menu .....	97
4.4 BMC .....	98
System Event Log Menu .....	98
BMC Network Configuration Menu .....	99
4.5 Event Logs .....	102
4.6 Security .....	104
4.7 Boot .....	106
4.8 Save & Exit .....	108
<b>Appendix A: BIOS Codes .....</b>	<b>110</b>
Additional BIOS POST Codes .....	110
<b>Appendix B: Software .....</b>	<b>111</b>
Microsoft Windows OS Installation .....	111
Installing the OS .....	111
Driver Installation .....	113
BMC .....	114
BMC ADMIN User Password .....	114
<b>Appendix C: Standardized Warning Statements .....</b>	<b>116</b>
Battery Handling .....	116
Product Disposal .....	118

## Contacting Supermicro

### Headquarters

Address: Super Micro Computer, Inc.  
980 Rock Ave.  
San Jose, CA 95131 U.S.A.

Tel: +1 (408) 503-8000

Fax: +1 (408) 503-8008

Email: [Marketing@supermicro.com](mailto:Marketing@supermicro.com) (General Information)  
[Sales-USA@supermicro.com](mailto:Sales-USA@supermicro.com) (Sales Inquiries)  
[Government\\_Sales-USA@supermicro.com](mailto:Government_Sales-USA@supermicro.com) (Gov. Sales Inquiries)  
[Support@supermicro.com](mailto:Support@supermicro.com) (Technical Support)  
[RMA@Supermicro.com](mailto:RMA@Supermicro.com) (RMA Support)  
[Webmaster@supermicro.com](mailto:Webmaster@supermicro.com) (Webmaster)

Website: <https://www.supermicro.com>

### Europe

Address: Super Micro Computer B.V.  
Het Sterrenbeeld 28, 5215 ML  
's-Hertogenbosch, The Netherlands

Tel: +31 (0) 73-6400390

Fax: +31 (0) 73-6416525

Email: [Sales\\_Europe@supermicro.com](mailto:Sales_Europe@supermicro.com) (Sales Inquiries)  
[Support\\_Europe@supermicro.com](mailto:Support_Europe@supermicro.com) (Technical Support)  
[RMA\\_Europe@supermicro.com](mailto:RMA_Europe@supermicro.com) (RMA Support)

Website: <https://www.supermicro.nl>

### Asia-Pacific

Address: Super Micro Computer, Inc.  
3F, No. 150, Jian 1st Rd.  
Zhonghe Dist., New Taipei City 235 Taiwan (R.O.C)

Tel: +886 (2) 8226-3990

Fax: +886 (2) 8226-3992

Email: [Sales-Asia@supermicro.com.tw](mailto:Sales-Asia@supermicro.com.tw) (Sales Inquiries)  
[Support@supermicro.com.tw](mailto:Support@supermicro.com.tw) (Technical Support)  
[RMA@supermicro.com.tw](mailto:RMA@supermicro.com.tw) (RMA Support)

Website: <https://www.supermicro.com.tw>

---

---

# Chapter 1:

## Introduction

Congratulations on purchasing your computer motherboard from an industry leader. Supermicro motherboards are designed to provide you with the highest standards in quality and performance.

---

<b>1.1 Quick Reference</b> .....	<b>11</b>
Motherboard Layout .....	11
Quick Reference Table .....	14
System Block Diagram .....	16
Motherboard Features .....	16
<b>1.2 Platform Overview</b> .....	<b>19</b>
<b>1.3 Special Features</b> .....	<b>20</b>
Recovery from AC Power Loss .....	20
<b>1.4 System Health Monitoring</b> .....	<b>21</b>
Onboard Voltage Monitors .....	21
Fan Status Monitor with Firmware Control .....	21
Environmental Temperature Control .....	21
<b>1.5 ACPI Features</b> .....	<b>22</b>

# 1.1 Quick Reference

For details on the H14SSL-N/NT motherboard layout, features, and other quick reference information, refer to the content below.

## Motherboard Layout

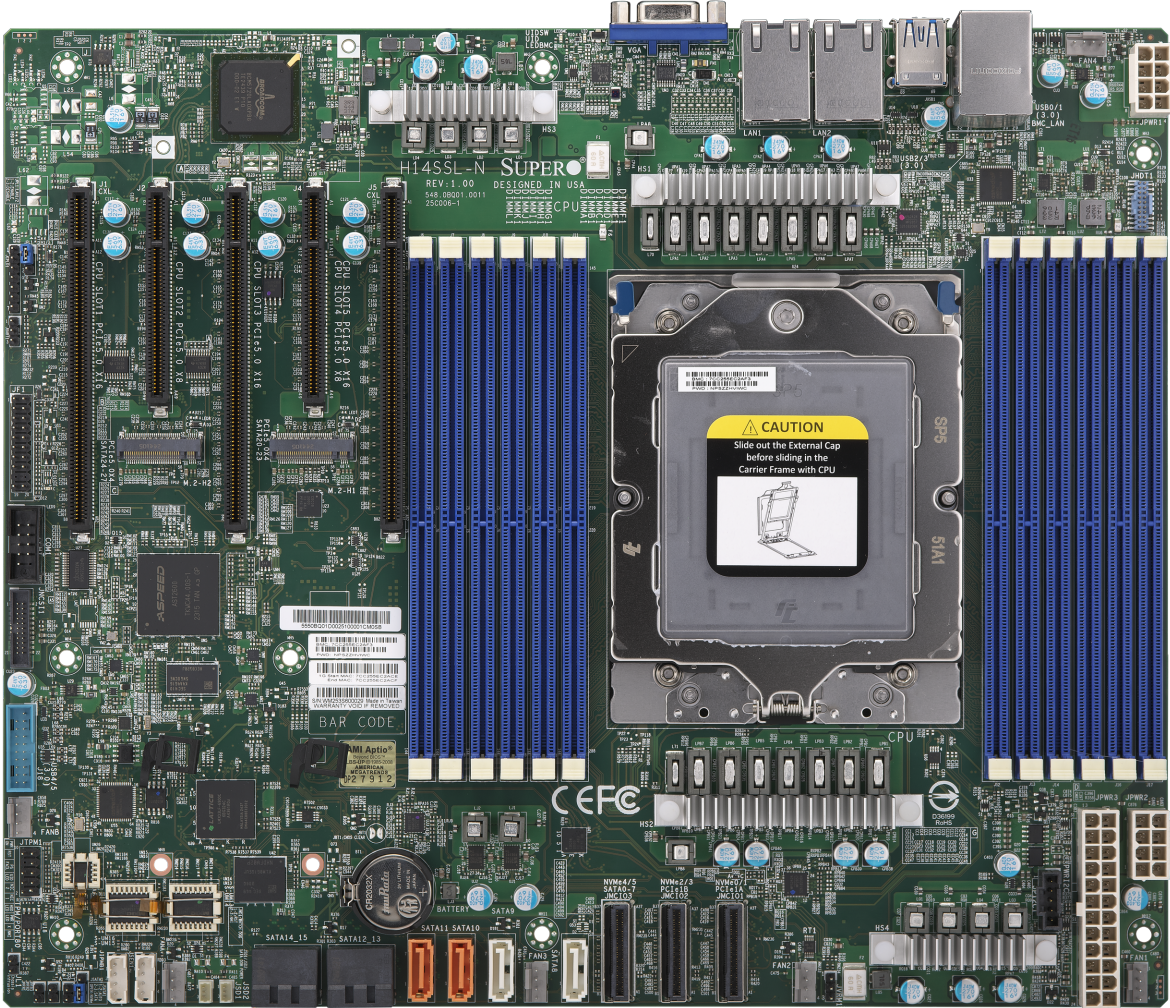


Figure 1-1. H14SSL-N Motherboard Image

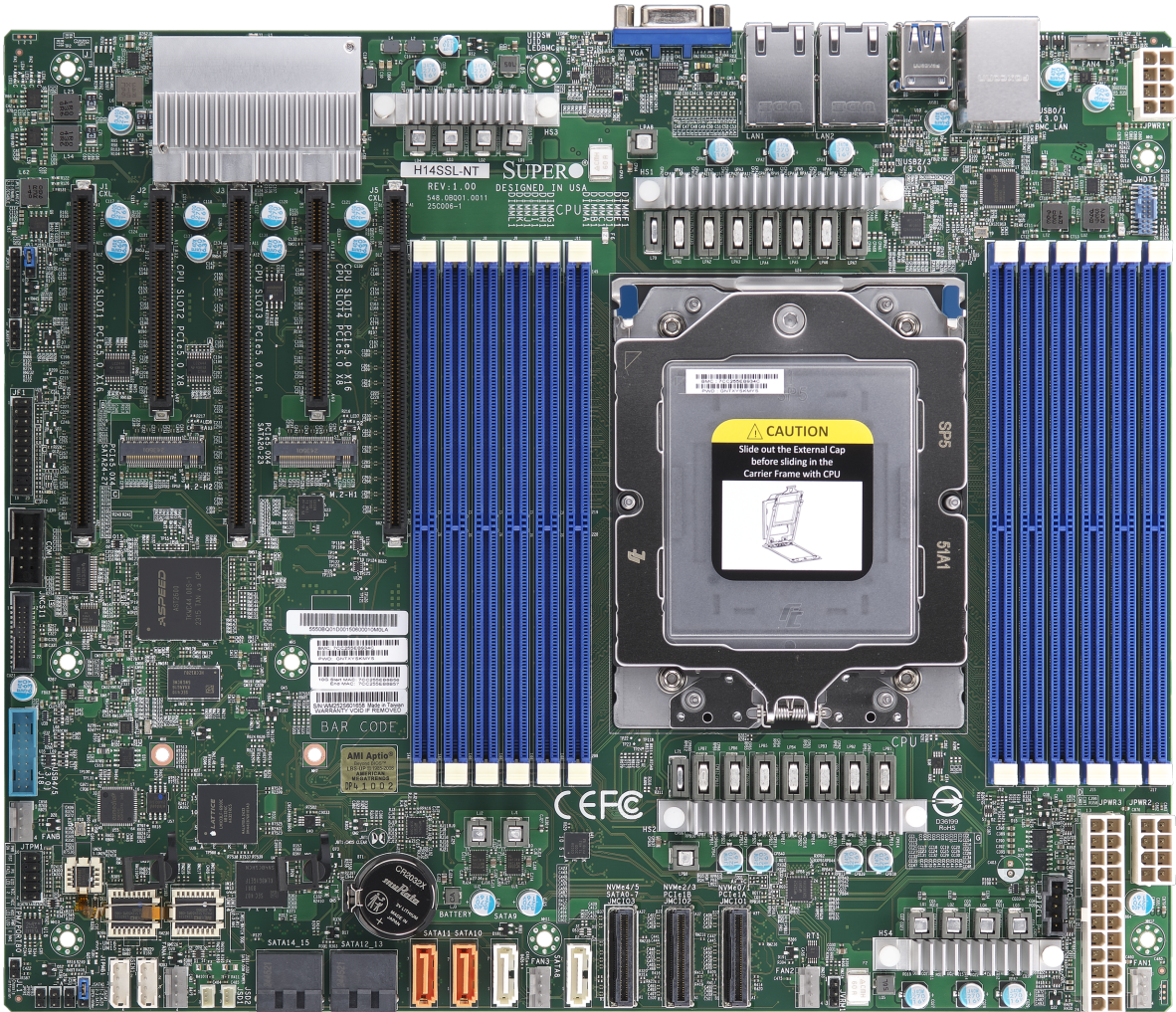
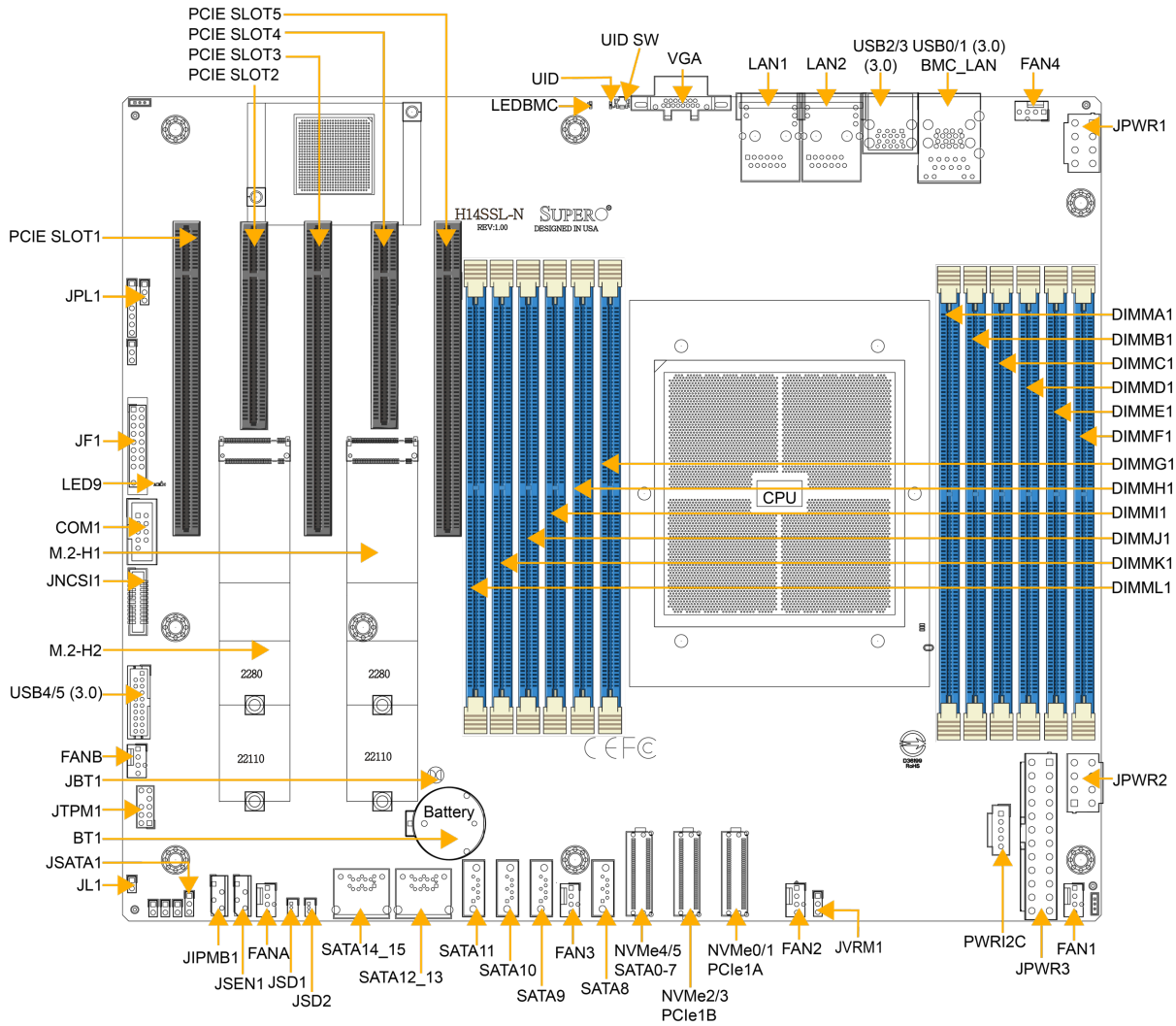


Figure 1-2. H14SSL-NT Motherboard Image



**Figure 1-3. H14SSL-N/NT Motherboard Layout**

**Notes:**

- For detailed information on jumpers, connectors, and LED indicators, see "[Component Installation](#)" on page 23.
- "■" indicates the location of pin 1.
- Components not documented are for internal testing purposes only.
- Use only the correct type of onboard CMOS battery as specified by the manufacturer. To avoid possible explosion, do not install the onboard battery upside down.

## Quick Reference Table

Jumper	Description	Default Setting
JBT1	CMOS Clear	Open (Normal)
JPL1	LAN Enable/Disable	Pins 1–2 (Enabled)
JSATA1	Hybrid MCIO Select	Pins 1–2 (Auto)
UID SW	Unit ID switch (push-button toggle switch ON/OFF)	Off

LED	Description	Status
LEDBMC	BMC Heartbeat LED	Green: Blinking (BMC Normal) Green: Fast blinking (BMC Initializing)
LED9	Power LED	Green: Blinking (BIOS initializing) Green: Solid on (Power on)
UID	UID LED	Blue: Blinking (BMC remote unit identified) Blue: Solid on (UID switched to unit identified)

Connector	Description
BT1	Onboard Battery
BMC_LAN	Dedicated BMC LAN Port
COM1	Front Accessible COM Port Header
DIMMA to DIMML	Twelve Memory Module Slots
FAN1, 2, 3, 4, A, B	4-pin System/CPU Cooling Fan Headers
JF1	Front Control Panel Header
JIPMB1	4-pin BMC External I <sup>2</sup> C Header (for an IPMI Card)
JL1	Chassis Intrusion Header
JNCSI1	NC-SI (Network Controller Sideband Interface) Connector
JPWR1, JPWR2	8-pin CPU Power Connectors
JPWR3	24-pin ATX Power Supply Connector
JSD1, JSD2	SATA DOM Power Connector
JSEN1	Thermal Sensor Header

Connector	Description
JTPM1	Trusted Platform Module/Port 80 Connector
LAN1, LAN2	Back Panel LAN1, LAN2 Connectors
M.2-H1, M.2-H2	M.2 Slots
NVMe0/1 PCIe1A	NVMe Ports 0/1, PCIe Port 1A
NVMe2/3 PCIe1B	NVMe Ports 2/3, PCIe Port 1B
NVMe4/5 SATA0-7	NVMe Ports 4/5 or SATA Ports 0-7
PCIE SLOT1, 3, 5	PCIE Slot PCIe 5.0 x16
PCIE SLOT2, 4	PCIE Slot PCIe 5.0 x8
PWRI2C	Power Supply SMBus I <sup>2</sup> C Header
SATA0-7	SATA 0-7 via JMCIO3
SATA8, SATA9, SATA10, SATA11	Onboard SATA Ports 8-11
SATA12-13; 14-15	Onboard SATA ports 12-13; 14-15
USB0/1 (3.0)	Back Panel USB 3.0 Ports (USB0/1)
USB2/3 (3.0)	Back Panel USB 3.0 Ports (USB2/3)
USB4/5 (3.0)	Internal USB 3.0 header (USB4/5)
VGA	Back Panel VGA Port

**Note:** Jumpers, connectors, switches, and LED indicators that are not described in these tables are for manufacturing testing purposes only, and are not covered in this manual.

# System Block Diagram

H14SSL-N/NT  
AMD SP5 Rev. 1.00

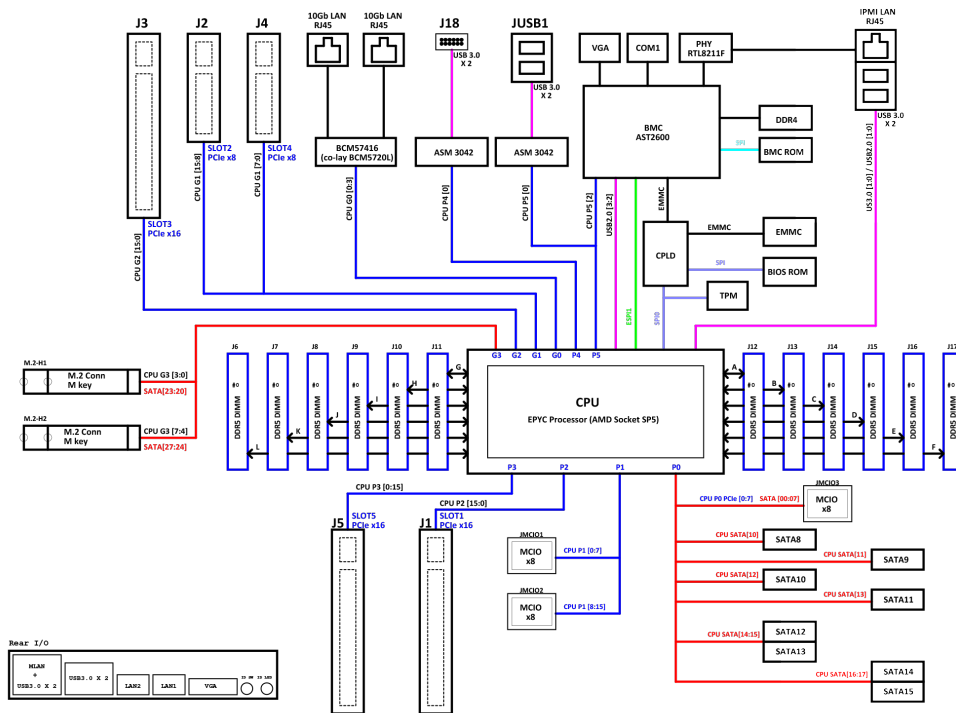


Figure 1-4. System Block Diagram

## Motherboard Features

<b>Processors</b>
<ul style="list-style-type: none"> <li>Single AMD EPYC™ 9004/9005 Series Processor in Socket SP5 sockets</li> </ul>
<b>Memory</b>
<ul style="list-style-type: none"> <li>12 DIMM slots with 1DPC supporting up to 3 TB registered ECC DDR5/3DS RDIMM at 6400 MT/s (AMD EPYC™ 9005 Series processor) or 3 TB registered ECC DDR5/ 3DS RDIMM at 4800 MT/s (AMD EPYC™ 9004 Series processor), both in Socket SP5</li> </ul> <p><b>Note:</b> Memory speed support depends on the processor used in the system.</p>
<b>DIMM Size</b>
<ul style="list-style-type: none"> <li>Up to 256 GB</li> </ul>

<b>Expansion Slots</b>
<ul style="list-style-type: none"> <li>• Three PCIe 5.0 x16 connectors</li> <li>• Two PCIe 5.0 x8 connectors</li> <li>• Two M.2 connectors (PCIe 5.0 x4)</li> </ul>
<b>Baseboard Management Controller (BMC)/Network</b>
<ul style="list-style-type: none"> <li>• Aspeed AST2600 BMC</li> </ul>
<b>Graphics</b>
<ul style="list-style-type: none"> <li>• Aspeed AST2600 BMC chip</li> </ul>
<b>I/O Devices</b>
<ul style="list-style-type: none"> <li>• Eight onboard SATA 3.0 internal ports</li> <li>• One RJ45 dedicated IPMI LAN port</li> <li>• Six USB 3.0 ports (front: two; rear: four)</li> <li>• One VGA port</li> </ul>
<b>BIOS</b>
<ul style="list-style-type: none"> <li>• ACPI 6.5, SMBIOS 3.7 or later, Plug-and-Play (PnP), RTC (Real Time Clock) wakeup</li> </ul>
<b>Network</b>
<ul style="list-style-type: none"> <li>• Two RJ45, Broadcom BCM5720 1 GbE LAN ports (H14SSL-N)</li> <li>• Two RJ45, Broadcom BCM57416 10 GbE LAN ports (H14SSL-NT)</li> </ul>
<b>Power Management</b>
<ul style="list-style-type: none"> <li>• ACPI power management (S5)</li> <li>• Power-on mode for AC power recovery</li> <li>• Wake-on-LAN</li> </ul>
<b>System Health Monitoring</b>
<ul style="list-style-type: none"> <li>• Onboard voltage monitoring for +3.3 V, +3.3 V Standby, +5 V, +5 V Standby, +12 V, Vcore</li> <li>• Onboard temperature monitoring for CPU, GPU, VRM, LAN, system, peripheral, memory, NIC, M.2 SSD, and NVMe devices</li> <li>• CPU thermal trip support</li> </ul>
<b>Fan Control</b>
<ul style="list-style-type: none"> <li>• Six 4-pin fan headers with fan speed control</li> </ul>

<b>System Management</b>
<ul style="list-style-type: none"><li>• IPMIView/SMCIPMITOOL/IPMICFG</li><li>• SuperDoctor® 5</li><li>• SDO/SPM/SSM/SUM-OOB/InBand</li><li>• Trusted Platform Module (TPM) support</li></ul>
<b>Firmware Integrity / System Security</b>
<ul style="list-style-type: none"><li>• TPM (Trusted Platform Module) support (optional part needed)</li><li>• RoT (Root of Trust) support to protect firmware security by detecting critical data corruption, and restoring platform integrity</li></ul>
<b>LED Indicators</b>
<ul style="list-style-type: none"><li>• Power Indicator</li><li>• UID / Remote UID</li></ul>
<b>Dimensions</b>
<ul style="list-style-type: none"><li>• 10.1" (L) x 12 (W) (256.54 mm x 304.8 mm)</li></ul>

**Note:** The CPU maximum TDP (Thermal Design Power) is subject to chassis and heatsink cooling restrictions, and it also depends on server SKUs. For proper thermal management, please check the chassis and heatsink specifications.

## 1.2 Platform Overview

Built upon the functionality and capability of the Single AMD EPYC™ 9004/9005 Series Processor in Socket SP5, the H14SSL-N/NT motherboard offers maximum I/O expandability, energy efficiency, and data reliability in a 3 nm process architecture, and is optimized for embedded storage solutions, networking applications, or cloud-computing platforms.

With the support of new micro-architecture 3 nm process technology, it increases system performance for a multitude of server applications.

The following features are supported by the Single AMD EPYC™ 9004/9005 Series Processor:

- ACPI Power Management Logic Support Rev. 6.5
- Adaptive Thermal Management/Monitoring
- PCIe 5.0 with a transfer rate up to 32 GT/s and SATA 3.0 with a transfer rate of up to 6.0 Gb/s
- System Management Bus (SMBus) Specification Version 3.1.1

## 1.3 Special Features

### Recovery from AC Power Loss

The Basic I/O System (BIOS) provides a setting that determines how the system will respond when AC power is lost and then restored to the system. You can choose for the system to remain powered off (in which case you must press the power switch to turn it back on), or for it to automatically return to the power-on state. See Advanced Setup Configurations under "[UEFI BIOS](#)" on [page 67](#) for this setting. The default setting is **Last State**.

## 1.4 System Health Monitoring

### Onboard Voltage Monitors

An onboard voltage monitor will continuously scan the voltages of the onboard chipset, memory, processor, and battery. Once a voltage becomes unstable, a warning is given or an error message is sent to the screen. You can adjust the voltage thresholds to define the sensitivity of the voltage monitor. Real time voltage levels are displayed in IPMI.

### Fan Status Monitor with Firmware Control

The system health monitor embedded in the BMC chip can check the RPM status of the cooling fans. The processor and chassis fans are controlled via IPMI.

### Environmental Temperature Control

System Health sensors in the BMC monitor the temperatures and voltage settings of onboard processors and the system in real time via the IPMI interface. Whenever the temperature of the processor or the system exceeds a user-defined threshold, system/processor cooling fans will be turned on to prevent the processor or the system from overheating.

**Note:** To avoid possible system overheating, be sure to provide adequate airflow to your system.

## 1.5 ACPI Features

ACPI stands for Advanced Configuration and Power Interface. The ACPI specification defines a flexible and abstract hardware interface that provides a standard way to integrate power management features throughout a computer system, including its hardware, operating system, and application software. This enables the system to automatically turn on and off peripherals such as network cards, hard disk drives, and printers.

In addition to enabling operating system-directed power management, ACPI also provides a generic system event mechanism for Plug and Play, an operating system-independent interface for configuration control. ACPI leverages the Plug and Play BIOS data structures while providing a processor architecture-independent implementation that is compatible with Windows Server 2022.

# Chapter 2:

## Component Installation

This chapter provides instructions on installing and replacing main system components for the H14SSL-N/NT motherboard. To prevent compatibility issues, only use components that match the specifications and/or part numbers given.

Installation or replacement of most components require that power first be removed from the system. Follow the procedures given in each section.

---

<b>2.1 Static-Sensitive Devices</b> .....	<b>25</b>
Precautions .....	25
Unpacking .....	25
<b>2.2 Motherboard Installation</b> .....	<b>26</b>
Location of Mounting Holes .....	26
Installing the Motherboard .....	29
<b>2.3 Processor and Heatsink Installation</b> .....	<b>31</b>
Preparing the Processor Socket .....	31
Installing the Processor into the Frame .....	33
Installing the Heatsink .....	36
Uninstalling the Heatsink and Processor .....	39
<b>2.4 Memory Support and Installation</b> .....	<b>40</b>
Memory Support .....	40
General Guidelines for Optimizing Memory Performance .....	41
DIMM Population .....	41
DIMM Installation .....	41
DIMM Removal .....	44
<b>2.5 Battery Removal and Installation</b> .....	<b>45</b>
Battery Removal .....	45
Proper Battery Disposal .....	45
Battery Installation .....	45
<b>2.6 Connections, Jumpers, and LEDs</b> .....	<b>46</b>
Power Supply and Power Connections .....	46
JF1 Front Control Panel Headers .....	47

---

Headers and Connections .....	47
Jumper Settings .....	52
LED Indicators .....	54

## 2.1 Static-Sensitive Devices

Electrostatic Discharge (ESD) can damage electronic components. To avoid damaging your motherboard, it is important to handle it very carefully. The following measures are generally sufficient to protect your equipment from ESD.

### Precautions

- Use a grounded wrist strap designed to prevent static discharge.
- Touch a grounded metal object before removing the board from the antistatic bag.
- Handle the motherboard only by its edges. Do not touch its components, peripheral chips, memory modules, or gold contacts.
- When handling chips or modules, avoid touching their pins.
- Put the motherboard and peripherals back into their antistatic bags when not in use.
- For grounding purposes, make sure that your computer chassis provides excellent conductivity between the power supply, the case, the mounting fasteners, and the motherboard.
- Use only the correct type of onboard CMOS battery. To avoid possible explosion, do not install the onboard battery upside down.

### Unpacking

To avoid static damage, the motherboard is shipped in antistatic packaging. When unpacking the motherboard, make sure that the person handling it is static protected.

## 2.2 Motherboard Installation

All motherboards have standard mounting holes to fit different types of chassis. Make sure that the locations of all the mounting holes for both the motherboard and the chassis match. Although a chassis may have both plastic and metal mounting fasteners, metal ones are highly recommended because they ground the motherboard to the chassis. Make sure that the metal standoffs click in or are screwed in tightly.

### Location of Mounting Holes

1. To avoid damaging the motherboard and its components, please do not use a force greater than 8 lb/inch on each mounting screw during motherboard installation.
2. Some components are very close to the mounting holes. Please take precautionary measures to avoid damaging these components when installing the motherboard to the chassis.

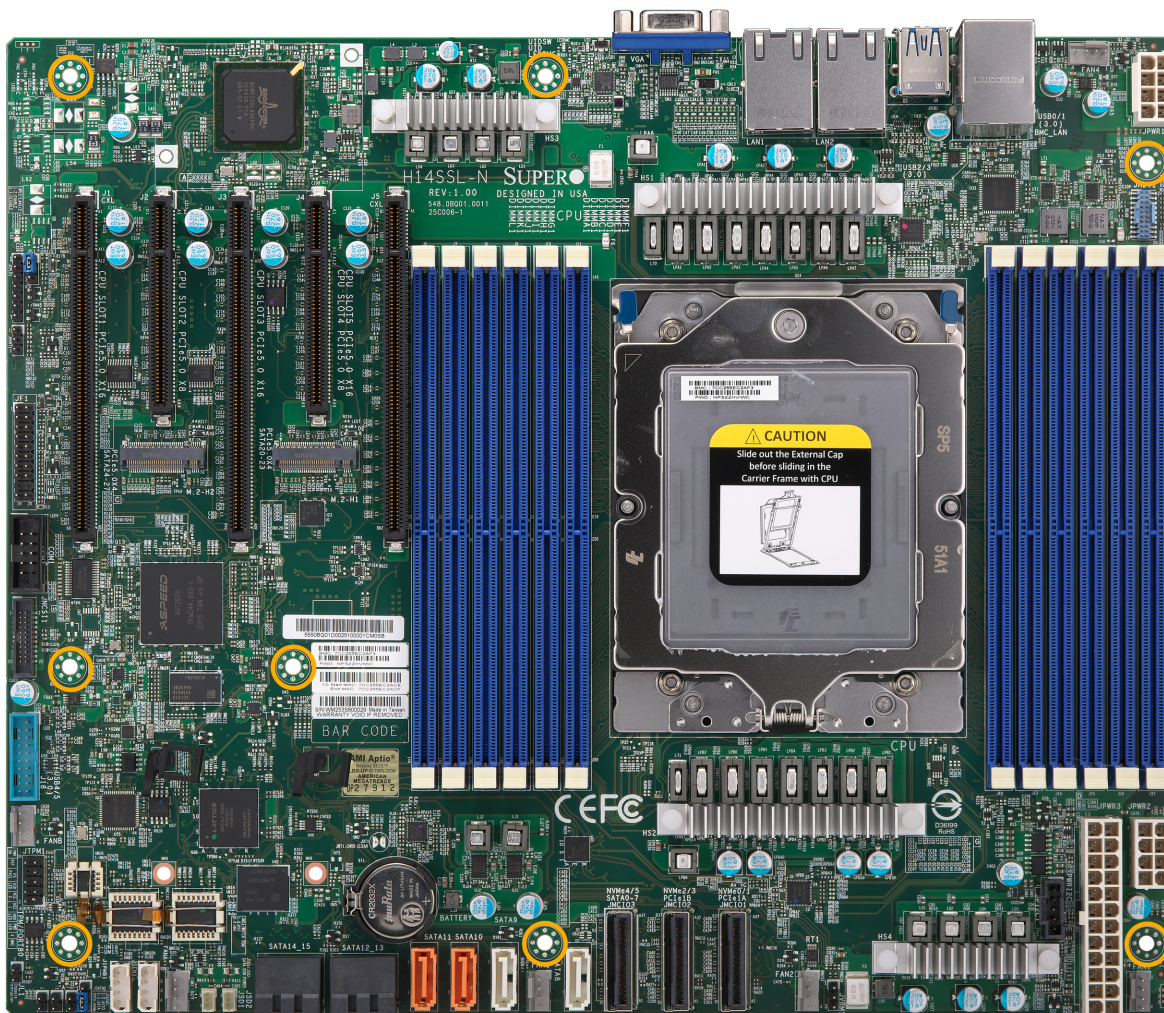


Figure 2-1. Location of Mounting Holes: H14SSL-N

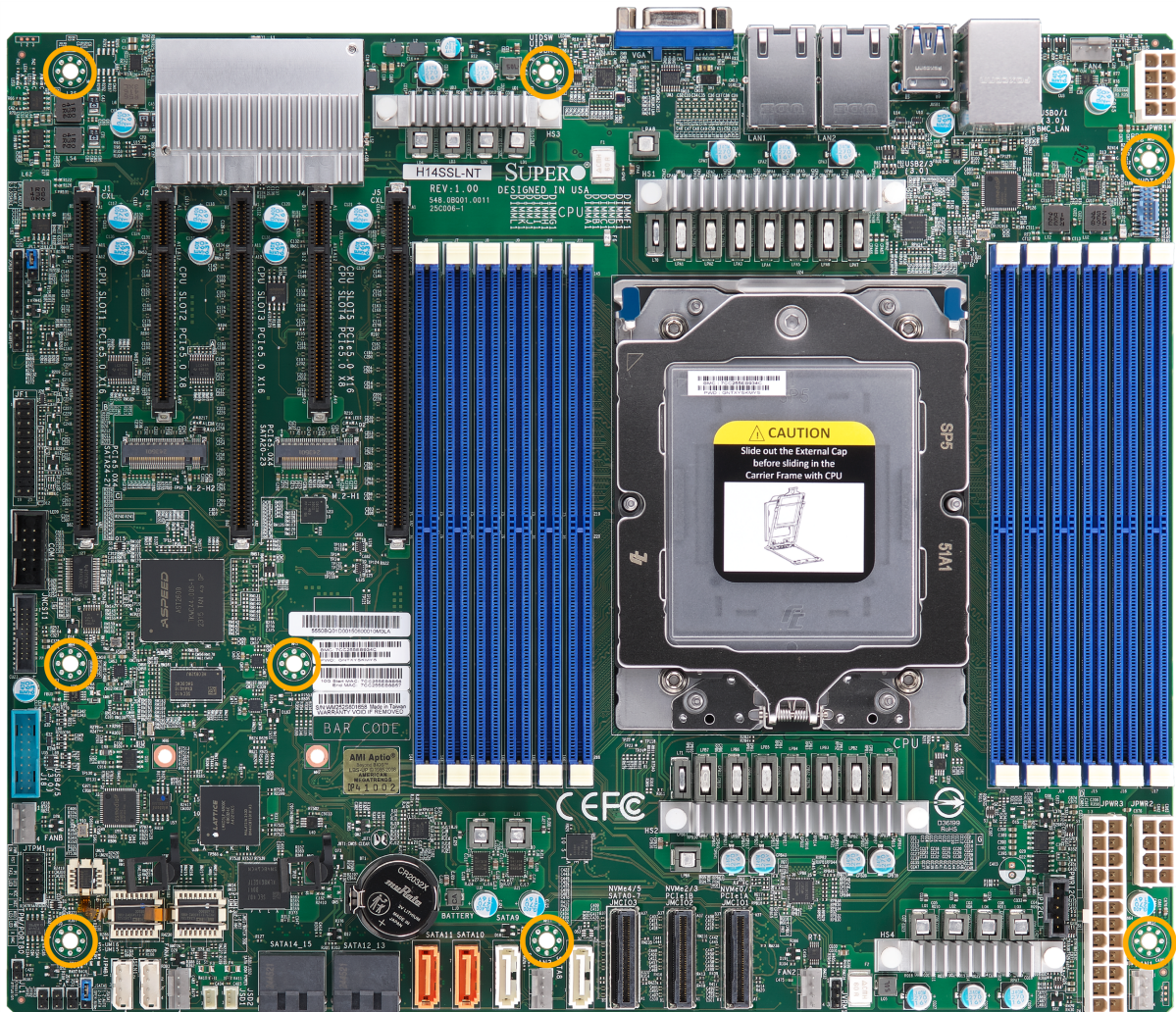
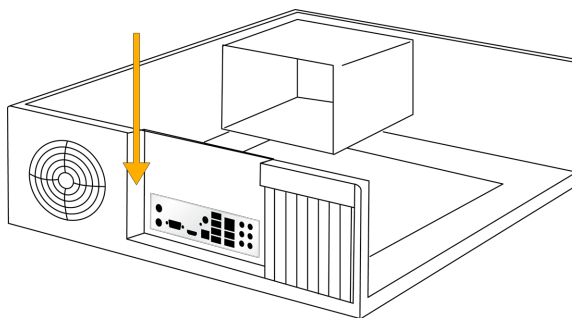


Figure 2-2. Location of Mounting Holes: H14SSL-NT

## Installing the Motherboard

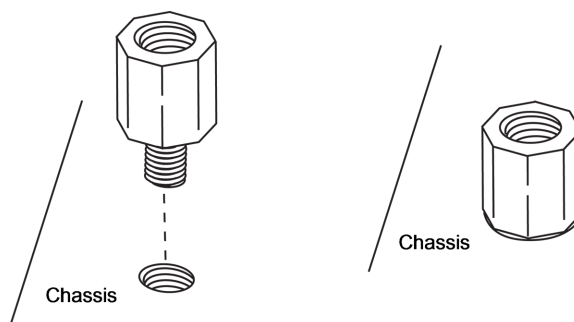
1. Install the I/O shield into the back of the chassis, if applicable.



**Figure 2-3. Installing the I/O Shield**

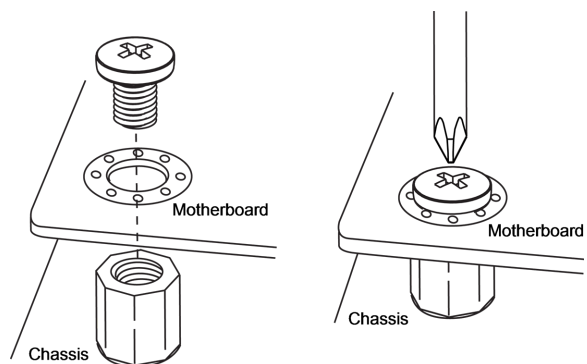
**Note:** Images displayed are for illustration purposes only. The components installed in your system may or may not look exactly the same as the graphics shown in the manual.

2. Locate the mounting holes on the motherboard. See Motherboard Installation for the location.



**Figure 2-4. Locating the Mounting Holes**

3. Locate the matching mounting holes on the chassis. Align the mounting holes on the motherboard against the mounting holes on the chassis.



**Figure 2-5. Aligning the Mounting Holes**

4. Install standoffs in the chassis as needed.
5. Install the motherboard into the chassis carefully to avoid damaging other motherboard components.
6. Insert pan head #6 screws into the mounting holes on the motherboard and the matching mounting holes on the chassis.
7. Make sure that the motherboard is securely placed in the chassis.

## 2.3 Processor and Heatsink Installation

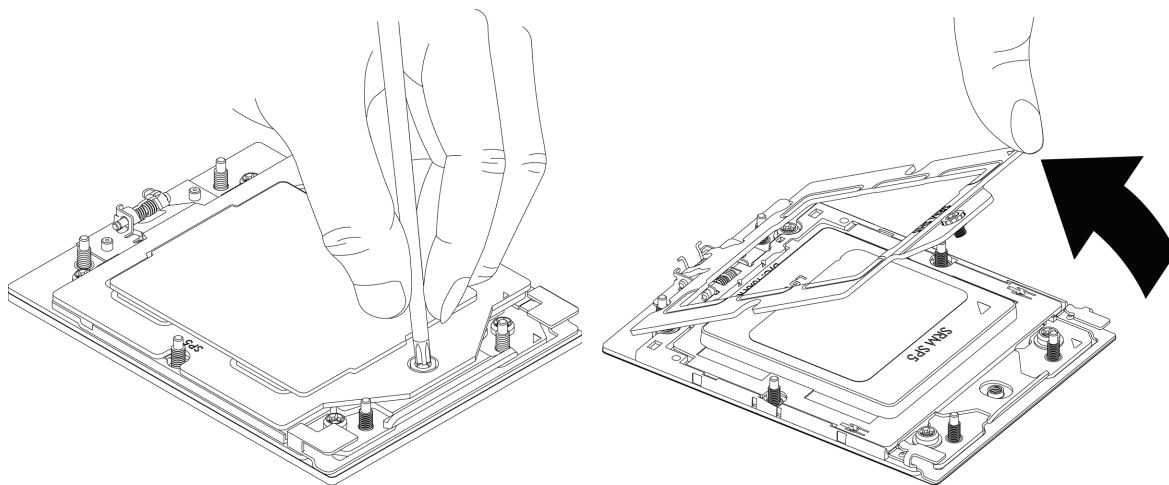
This section provides procedures to install the processor(s) and heatsink(s).

### Notes:

- Take industry standard precautions to avoid ESD damage. For details, see "[Static-Sensitive Devices](#)" on page 25.
- Before starting, make sure that the plastic socket cap is in place and none of the socket pins are bent. If any damage is noted, contact your retailer.
- Do not connect the system power cord before the processor and heatsink installation is complete.
- When handling the processor, avoid touching or placing direct pressure on the LGA lands (gold contacts). Improper installation or socket misalignment can cause serious damage to the processor or processor socket.
- Install the processor in the socket and the motherboard into the chassis before installing the heatsink.
- When buying a processor separately, use only a Supermicro certified heatsink.
- Refer to the Supermicro website for the most recent processor support.
- When installing the heatsink, ensure a torque driver set to the correct force is used for each screw.
- Thermal grease is pre-applied on a new heatsink. No additional thermal grease is needed.

### Preparing the Processor Socket

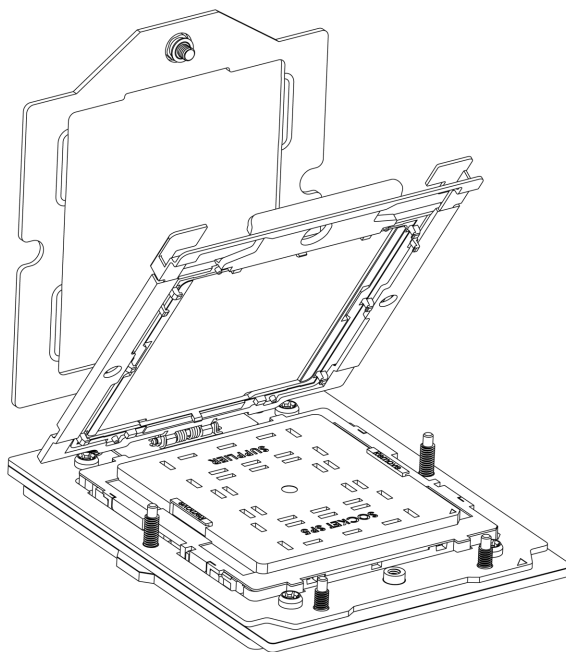
1. Remove the screw holding down the force frame. The spring-loaded force frame will raise up. Allow it to lift up to its stopped position.



**Figure 2-6. Removing Screw from the Force Frame**

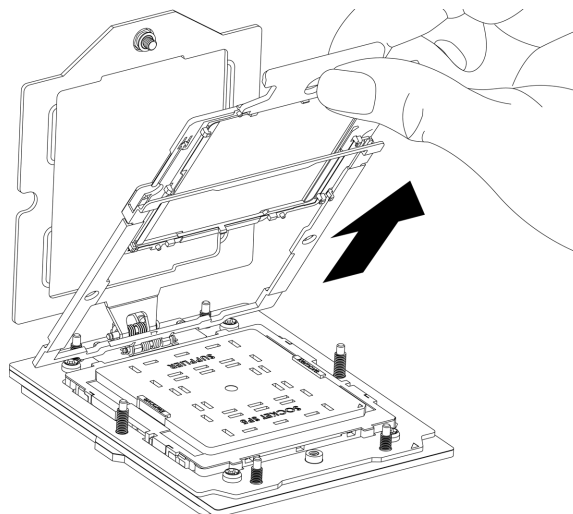
2. Lift the rail frame up by gripping the lift tabs near the front end of the rail frame. While keeping a secure grip of the rail frame, lift it to a position so you can do the next step of removing the external cap.

**Note:** The rail frame is spring loaded, so keep a secure grip on it as you lift it so it does not snap up.



**Figure 2-7. Lifting the Frame**

3. Remove the external cap from the rail frame by pulling it upwards through the rail guides on the rail frame.

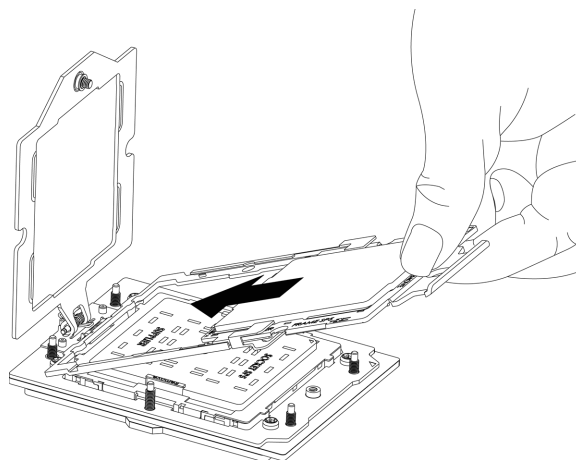


**Figure 2-8. Removing the Cap**

## Installing the Processor into the Frame

1. The processor package is shipped from the factory with the carrier frame pre-assembled. Grip the handle of the carrier frame/processor assembly from its shipping tray, and while gripping the handle, align the flanges of the carrier frame onto the rails of the rail frame so its pins will be at the bottom when the rail frame is lowered later.
2. Slide the carrier frame/processor assembly downwards to the bottom of the rail frame. Ensure the flanges are secure on the rails as you lower it downwards.

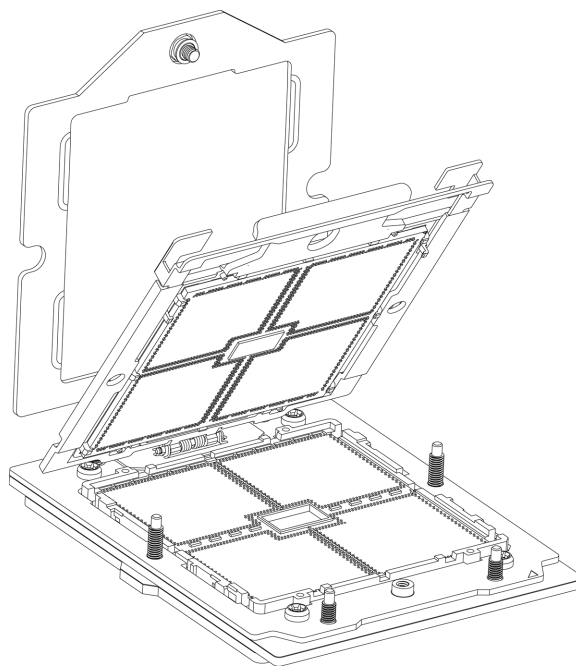
**Note:** You can only install the processor inside the socket in one direction with the handle at the top. Make sure that it is properly inserted into the socket before closing the rail frame plate. If it doesn't close properly, do not force it as it may damage your processor. Instead, open the rail frame plate again, and double-check that the processor is aligned properly.



**Figure 2-9. Installing into the Rail Frame**

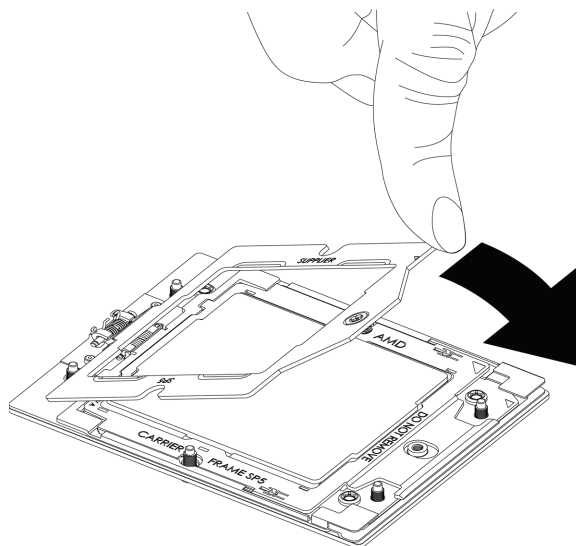
3. Lift up the rail frame until it securely rests in upright position. Then remove the cover cap from the socket below. Grip the two lift tabs marked "Remove" at the middle of the cap and pull vertically upwards to remove the cover cap.

**Important:** The exposed socket contacts are extremely vulnerable and can be damaged easily. Do not touch or drop objects onto the contacts and be careful removing the cover cap and when placing the rail frame over the socket.



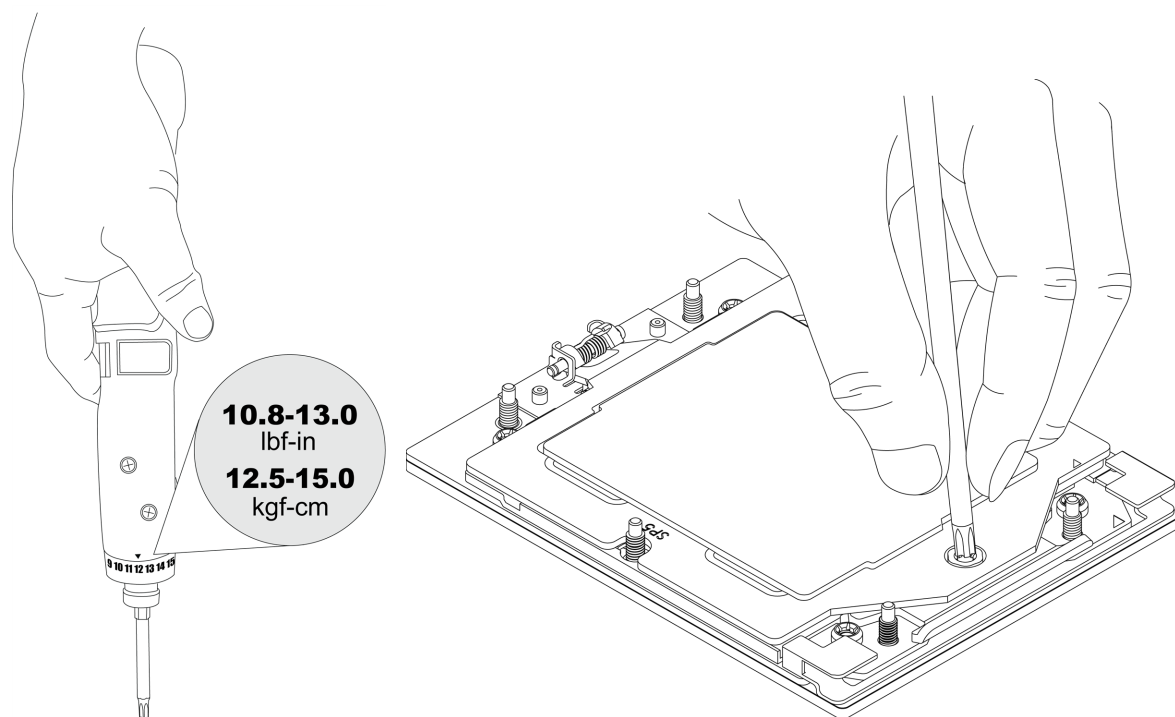
**Figure 2-10. Removing the Cover Cap**

4. Gently lower the rail frame down onto the socket until the latches on the rail frame engage with the socket housing and it rests in place. Do not force it into place! Note that the force frame is spring loaded and must be held in place before it is secured.



**Figure 2-11. Securing the Force Frame**

5. Use a T20 bit torque driver, set at 12.5–15.0 kgf-cm (10.8–13.0 lbf-in) to prevent damage to the processor. Replace and tighten the screws in the same order they were removed. When finished, the force frame will be secure over both the rail frame and processor package.

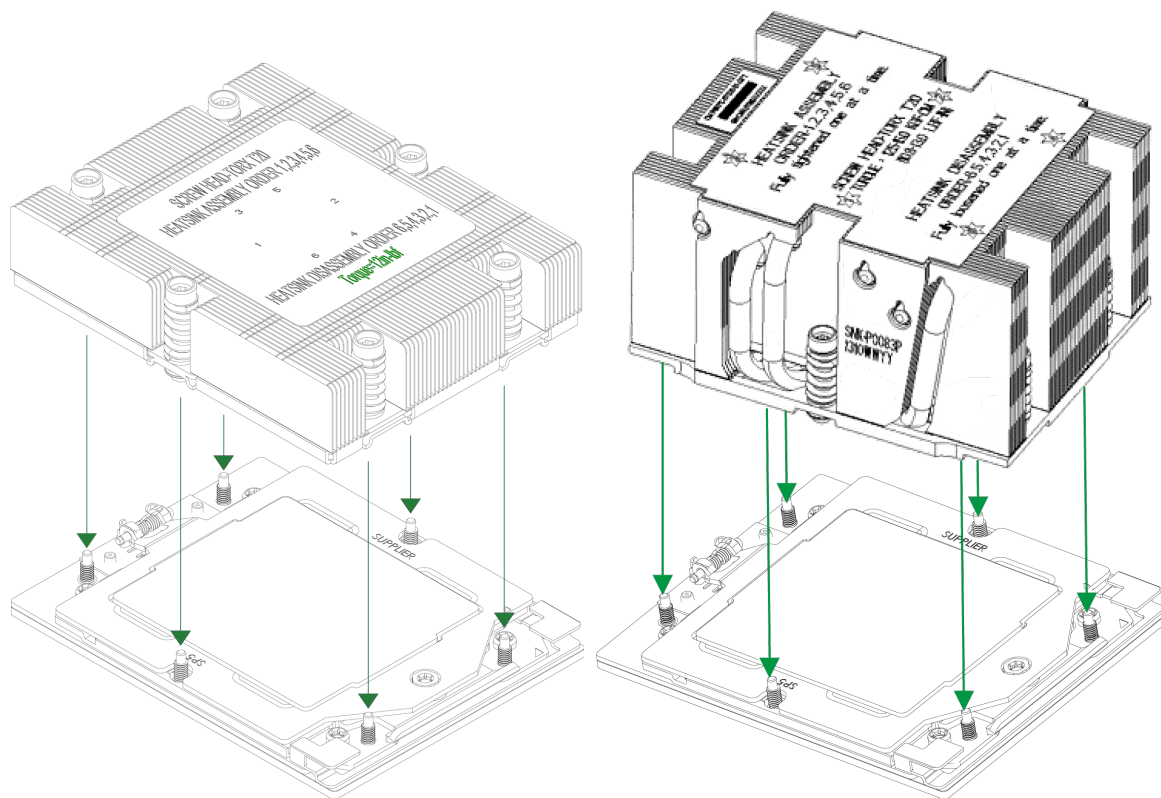


**Figure 2-12. Replacing Screws with Torque Driver**

## **Installing the Heatsink**

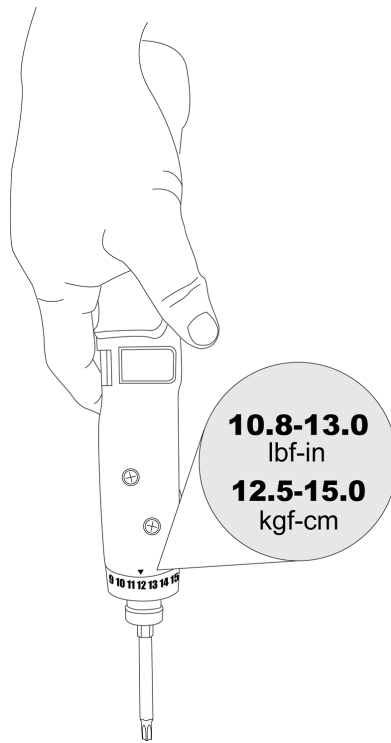
After the force frame is secured and the processor is in place, install the heatsink onto the processor.

1. Place the heatsink so that it rests on the processor aligning the six screws on the socket frame.

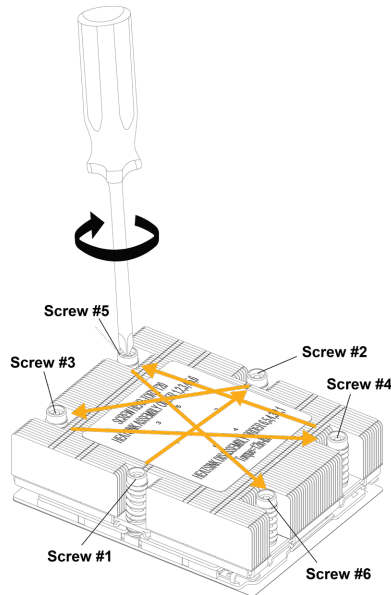


**Figure 2-13. Placing the Heatsink (1U left, 2U right)**

2. Using a diagonal pattern, tighten the six screws down on the heatsink in a clockwise fashion until secure. Use a T30 bit torque driver with a torque of 12.5–15.0 kgf-cm (10.8–13.0 in-lbf) to prevent damage to the processor. The heatsink will now be secured and you have finished installing the processor and heatsink onto the motherboard. Repeat this procedure for any remaining CPU sockets on the motherboard.



**Figure 2-14. Using a T30 Bit Torque Driver**



**Figure 2-15. Tightening the Six Heatsink Screws in a Clockwise Sequence**

The heatsink is now secured.

## Uninstalling the Heatsink and Processor

1. Remove the screws holding the heatsink and gently work it loose.
2. Clean the thermal grease left by the heatsink on the processor assembly to limit the risk of contaminating the land pads or contacts in the socket housing.
3. Unscrew the plate and lift the force frame to the vertical position.
4. Lift the rail frame using the lift tabs near the front end of the rail frame. Note that the rail frame is spring loaded, so be careful lifting it up into a vertical position.
5. Grip the handle of the carrier frame and pull upwards to extract it from the rail frame. Return the processor assembly to its original shipping container.
6. Grip the handle on the external cap and return it to the rail frame, sliding it downwards until it rests in the frame.
7. Gripping the rail frame, rotate it downwards until it rests above and locks over the socket housing in its horizontal position.
8. Push and rotate down the force frame until it is over the external cap and rail frame in a horizontal position.
9. While holding down the force frame, secure it back to the socket frame by securing screw #1 in place.

## 2.4 Memory Support and Installation

**Important:** To prevent any damage, exercise extreme care when installing or removing memory modules.

**Note:** Check the Supermicro website for recommended memory modules.

### Memory Support

The motherboard supports up to 3 TB registered ECC DDR5/3DS RDIMM at 6400 MT/s (AMD EPYC™ 9005 Series processor) or 3 TB at 4800 MT/s (AMD EPYC™ 9004 Series processor), in 12 slots, both in Socket SP5.

**Note:** Check the Supermicro website for possible updates to memory support.

Populating RDIMM/RDIMM 3DS DDR5 Memory Modules with AMD EPYC™ 9004 Series Processors				
Type	DIMM Population	Maximum Frequency (MT/s)		
	DIMM1	6400 MT/s Grade DIMM	5600 MT/s Grade DIMM	4800 MT/s Grade DIMM
RDIMM	1R (1 rank)	4800	4800	4800
	2R (2 ranks)			
3DS RDIMM	2S2R (4 ranks)			
	2S4R (8 ranks)			

Populating RDIMM/RDIMM 3DS DDR5 Memory Modules with AMD EPYC™ 9005 Series Processors				
Type	DIMM Population	Maximum Frequency (MT/s)		
	DIMM1	6400 MT/s Grade DIMM	5600 MT/s Grade DIMM	4800 MT/s Grade DIMM
RDIMM	1R (1 rank)	6400	5600	4800
	2R (2 ranks)			
3DS RDIMM	2S2R (4 ranks)			
	2S4R (8 ranks)			

## General Guidelines for Optimizing Memory Performance

- It is recommended to use DDR5 memory of the same type, size, and speed.
- Mixed DIMM speeds can be installed. However, all DIMMs will run at the speed of the slowest DIMM.
- The motherboard will support an odd number amount of memory modules. However, to achieve the best memory performance, a balanced memory population is recommended.

## DIMM Population

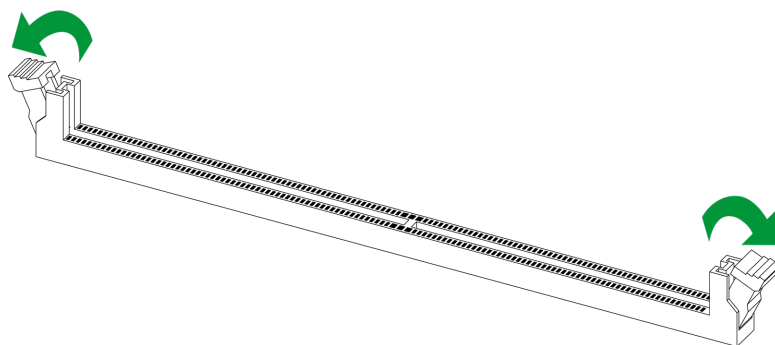
This table shows the recommended slots to populate.

DIMM Population Guide												
Slots Used	Channel											
	F1	E1	D1	C1	B1	A1	G1	H1	I1	J1	K1	L1
1 DIMM						✓						
2 DIMMs						✓	✓					
4 DIMMs				✓		✓	✓		✓			
6 DIMMs				✓	✓	✓	✓	✓	✓			
8 DIMMs		✓		✓	✓	✓	✓	✓	✓		✓	
10 DIMMs		✓	✓	✓	✓	✓	✓	✓	✓	✓	✓	
12 DIMMs	✓	✓	✓	✓	✓	✓	✓	✓	✓	✓	✓	✓

## DIMM Installation

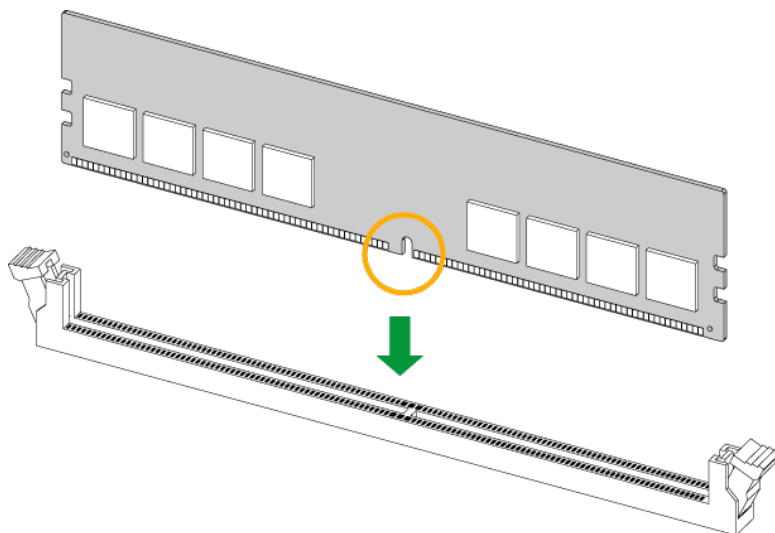
**Important:** To avoid causing any damage to the memory module or the DIMM socket, do not use excessive force when pressing the release tabs on the ends of the DIMM socket. Handle memory modules with care. To avoid ESD-related damage to your memory modules or components, carefully follow all the instructions given in "[Static-Sensitive Devices](#)" on [page 25](#).

1. Insert the desired number of DIMMs into the memory slots based on the recommended DIMM population table earlier in this section.
2. Push the release tabs outwards on both ends of the DIMM slot to unlock it.



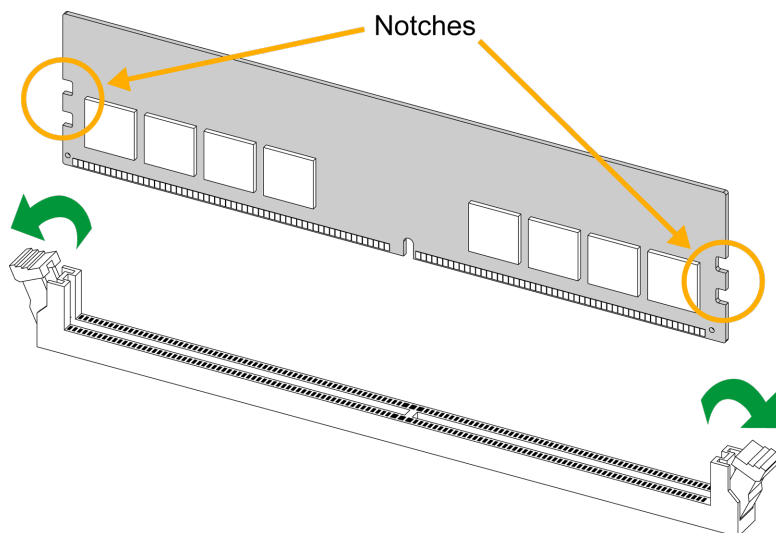
**Figure 2-16. Unlocking the DIMM Slot**

3. Align the key of the DIMM with the receptive point on the memory slot.



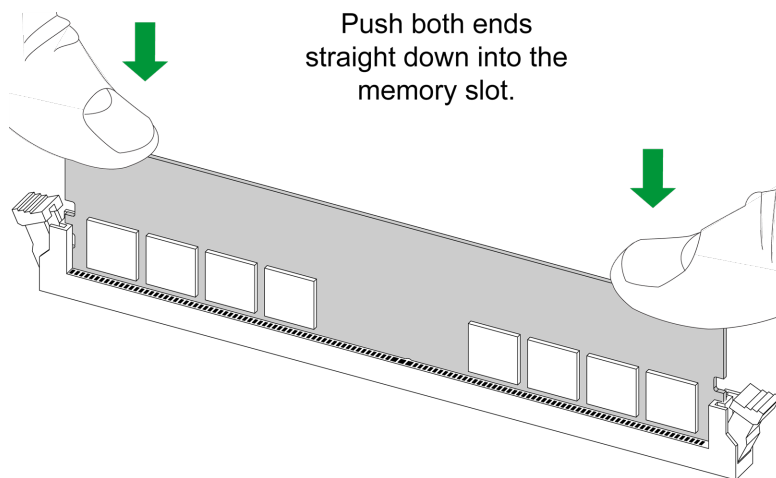
**Figure 2-17. Aligning the DIMM Slot with the Receptive Point**

4. Align the notches on both ends of the module against the receptive points on the ends of the slot.



**Figure 2-18. Aligning the Notches**

5. Press both ends of the module straight down into the slot until the module snaps into place.
6. Press the release tabs to the lock positions to secure the DIMM into the slot.



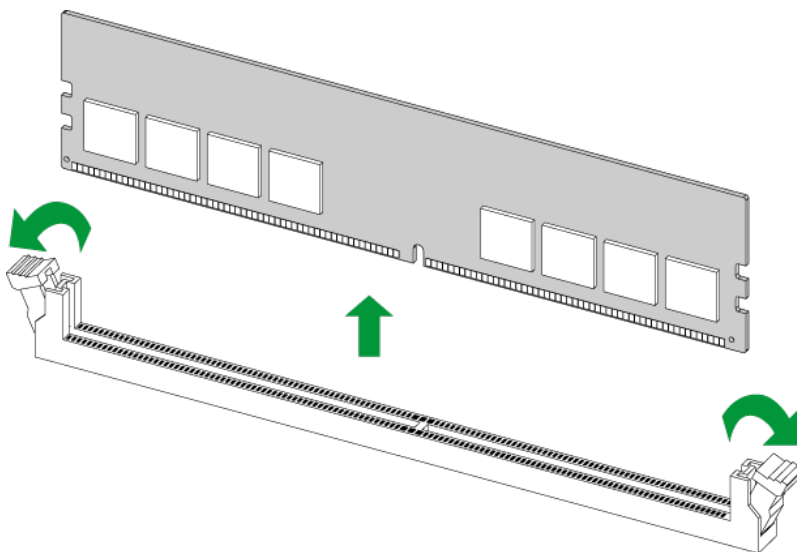
**Figure 2-19. Securing the DIMM**

For a detailed diagram of the H14SSL-N/NT motherboard, see the layout under ["Quick Reference"](#) on page 11.

## DIMM Removal

**Important:** To avoid causing any damage to the memory module or the DIMM socket, do not use excessive force when pressing the release tabs on the ends of the DIMM socket. Handle memory modules with care. To avoid ESD-related damage to your memory modules or components, carefully follow all the instructions given in ["Static-Sensitive Devices"](#) on [page 25](#).

Press both release tabs on the ends of the DIMM socket to unlock it. Once the DIMM is loosened, remove it from the memory slot.



**Figure 2-20. Unlocking the DIMM Slot**

For a detailed diagram of the H14SSL-N/NT motherboard, see the layout under ["Quick Reference"](#) on [page 11](#).

## 2.5 Battery Removal and Installation

### Battery Removal

To remove the onboard battery, follow the steps below:

1. Power off your system and unplug your power cable.
2. Place the system on a workbench.
3. Locate the onboard battery as shown below.
4. Using a tool such as a pen or a small screwdriver, push the battery lock outwards to unlock it. Once unlocked, the battery will pop out from the holder.
5. Remove the battery.

### Proper Battery Disposal

**Important:** Handle used batteries carefully. Do not damage the battery in any way; a damaged battery may release hazardous materials into the environment. Do not discard a used battery in the garbage or a public landfill. Comply with the regulations set up by your local hazardous waste management agency to dispose of your used battery properly.

### Battery Installation

To install an onboard battery, follow steps 1 and 2 above and continue below:

**Important:** When replacing a battery, be sure to only replace it with the same type.

1. Identify the battery's polarity. The positive (+) side should be facing up.
2. Insert the battery into the battery holder and push it down until you hear a click to ensure that the battery is securely locked.

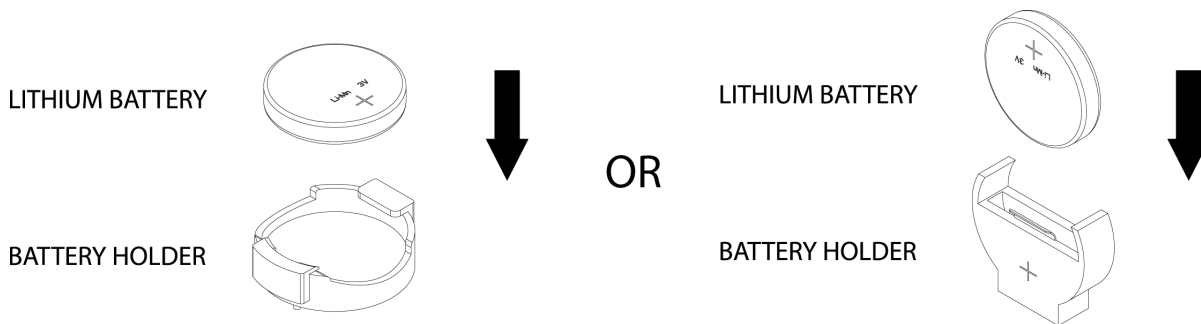


Figure 2-21. Installing a Battery

## 2.6 Connections, Jumpers, and LEDs

Refer to the following sections for information about connections, jumpers, and LEDs for the H14SSL-N/NT motherboard.

### Power Supply and Power Connections

For information about the power supply and power connections of the H14SSL-N/NT motherboard, refer to the following content.

#### ***Main Power Supply Connector (JPWR3)***

The primary power supply connector (JPWR3) is an ATX power connector that the power supply plugs directly into.

<b>ATX Power 24-pin Connection</b>			
<b>Pin Definitions: 24 Total</b>			
<b>Pin#</b>	<b>Definition</b>	<b>Pin#</b>	<b>Definition</b>
13	+3.3 V	1	+3.3 V
14	No Connection	2	+3.3 V
15	GND	3	GND
16	PS_ON	4	+5 V
17	GND	5	GND
18	GND	6	+5 V
19	GND	7	GND
20	Res (No Connection)	8	PWR_OK
21	+5 V	9	+5 VSB
22	+5 V	10	+12 V
23	+5 V	11	+12 V
24	GND	12	+3.3 V

#### ***12 V 8-pin Auxilliary Power Connector (JPWR1, JPWR2)***

JPWR1 and JPWR2 are 8-pin ATX power connectors that provide auxilliary power to the processor. Refer to the table below for pin definitions.

8-pin Power Connector	
Pin Definitions: Eight Total	
Pin#	Definition
1–4	GND
5–8	+12 V (12 V Power)

## JF1 Front Control Panel Headers

JF1 contains header pins for various buttons and indicators that are normally located on a control panel at the front of the chassis. These connectors are designed specifically for use with Supermicro chassis. See the figure below for the location of JF1.

20-pin JF1 Front Control Panel Headers			
Pin Definitions: 20 Total			
Pin#	Definition	Pin#	Definition
1	Power Switch	2	GND
3	Reset Switch	4	GND
5	Power Fail LED+	6	Power Fail LED-
7	UID LED+	8	UID LED-
9	NIC2 Link LED+	10	NIC2 Link LED-
11	NIC1 Link LED+	12	NIC1 Link LED-
13	HDD LED+/UID Switch+	14	HDD LED-
15	Power LED+	16	Power LED-
17	Key, no pin	18	Key, no pin
19	NMI Switch	20	GND

For a detailed diagram of the H14SSL-N/NT motherboard, see the layout under "[Quick Reference](#)" on page 11.

## Headers and Connections

For information about the headers on the H14SSL-N/NT motherboard, refer to the following content.

### *Chassis Intrusion*

A Chassis Intrusion header is located at JL1 on the H14SSL-N/NT motherboard. Attach the appropriate cable from the chassis to inform you when the chassis is opened.

For a detailed diagram of the H14SSL-N/NT motherboard, see the layout under ["Quick Reference"](#) on page 11.

<b>Chassis Intrusion</b>	
<b>Pin Definitions: Two Total</b>	
<b>Pin#</b>	<b>Definition</b>
1	Intrusion Input
2	GND

### ***COM1 Header***

A single COM connection (COM1) is located on the motherboard. Refer to the layout below for the location of COM1.

For a detailed diagram of the H14SSL-N/NT motherboard, see the layout under ["Quick Reference"](#) on page 11.

<b>COM1 Header</b>			
<b>Pin Definitions: Nine Total</b>			
<b>Pin#</b>	<b>Definition</b>	<b>Pin#</b>	<b>Definition</b>
1	DCD	6	DSR
2	RXD	7	RTS
3	TXD	8	CTS
4	DTR	9	RI
5	GND	10	Key, no pin

### ***Disk-On-Module Power Connectors (JSD1 and JSD2)***

The Disk-On-Module (DOM) power connectors at JSD1 and JSD2 provide 5 V power to solid-state DOM storage devices connected to one of the SATA ports. See the table below for pin definitions.

For a detailed diagram of the H14SSL-N/NT motherboard, see the layout under ["Quick Reference"](#) on page 11.

<b>DOM Power</b>	
<b>Pin Definitions: Three Total</b>	
<b>Pin#</b>	<b>Definition</b>
1	5 V

<b>DOM Power</b>	
<b>Pin Definitions: Three Total</b>	
<b>Pin#</b>	<b>Definition</b>
2	GND
3	GND

### ***IPMB (Intelligent Platform Management Bus) Header (JIPMB1)***

An IPMB (Intelligent Platform Management Bus) header for IPMI 2.0 is located at JIPMB1. Connect the appropriate cable here to use the IPMB I<sup>2</sup>C connection on your system.

For a detailed diagram of the H14SSL-N/NT motherboard, see the layout under "[Quick Reference](#)" on page 11.

<b>IPMB Header</b>	
<b>Pin Definitions: Four Total</b>	
<b>Pin#</b>	<b>Definition</b>
1	Data
2	GND
3	Clock
4	+3.3 V Standby

### ***NCSI Header (JNCSI1)***

The NCSI (Network Controller Sideband Interface) header is located at JNCSI1. This header is an interface used to connect the BMC (Baseboard Management Controller) to a set of Network Interface Controllers to enable out-of-band remote manageability.

For a detailed diagram of the H14SSL-N/NT motherboard, see the layout under "[Quick Reference](#)" on page 11.

### ***Onboard Battery (BT1)***

The onboard backup battery is located at BT1. This battery provides backup power to the on-chip CMOS, which stores the BIOS setup information. It also supplies power to the Real-Time Clock (RTC) to keep it running.

For a detailed diagram of the H14SSL-N/NT motherboard, see the layout under "[Quick Reference](#)" on page 11.

### ***Onboard Fan Headers (FAN1–FAN4, FANA, FANB)***

There are six fan headers (FAN1–FAN4, FANA, FANB) on the motherboard. These are 4-pin fan headers; pins 1–3 are backward compatible with the traditional 3-pin fans. The onboard fan speeds are controlled by Thermal Management (via Hardware Monitoring) in the BMC. When using the Thermal Management setting, use all 4-pin fans.

For a detailed diagram of the H14SSL-N/NT motherboard, see the layout under "[Quick Reference](#)" on page 11.

<b>Fan Header</b>	
<b>Pin Definitions: Four Total</b>	
<b>Pin#</b>	<b>Definition</b>
1	GND (Black)
2	+12 V (Red)
3	Tachometer (Yellow)
4	PWM Control (Blue)

### ***Power System Management Bus (SMBus/I<sup>2</sup>C) Header (PWRI2C)***

The Power System Management Bus (SMBus/I<sup>2</sup>C) connector (PWRI2C) monitors the power supply.

For a detailed diagram of the H14SSL-N/NT motherboard, see the layout under "[Quick Reference](#)" on page 11.

<b>Power SMBus Header</b>	
<b>Pin Definitions: Five Total</b>	
<b>Pin#</b>	<b>Definition</b>
1	Clock
2	Data
3	PMBUS_Alert
4	GND
5	+3.3 V

### ***SATA (SATA8–15)***

The H14SSL-N/NT has eight available SATA 6.0 ports (SATA8, SATA9, SATA10, SATA11, SATA12/13, and SATA14/15).

<b>SATA Connectors</b>	
<b>Pin Definitions: Seven Total</b>	
<b>Pin#</b>	<b>Definition</b>
1	GND
2	SATA_TXP
3	SATA_TXN
4	GND
5	SATA_RXN
6	SATA_RXP
7	GND

### ***TPM/Port 80 Header***

The JTPM1 header on the H14SSL-N/NT motherboard is used to connect a Trusted Platform Module (TPM)/Port 80, which is available from Supermicro (optional). A TPM/Port 80 connector is a security device that supports encryption and authentication in storage drives. It allows the motherboard to deny access if the TPM associated with the storage drive is not installed in the system. Information on the TPM is available at the following page:

[https://www.supermicro.com/manuals/other/AOM-TPM-9670V\\_9670H\\_X12\\_H12.pdf](https://www.supermicro.com/manuals/other/AOM-TPM-9670V_9670H_X12_H12.pdf)

For a detailed diagram of the H14SSL-N/NT motherboard, see the layout under "[Quick Reference](#)" on page 11.

<b>Trusted Platform Module Header</b>			
<b>Pin Definitions: 10 Total</b>			
<b>Pin#</b>	<b>Definition</b>	<b>Pin#</b>	<b>Definition</b>
1	+3.3 V	2	SPI_CS#
3	RESET#	4	SPI_MISO
5	SPI_CLK	6	GND
7	SPI_MOSI	8	Key, no Pin
9	+1.8 V Standby	10	SPI_IRQ#

### ***USB Ports (USB4–USB5)***

There are a total of six USB ports supported on the motherboard. Four are located on the back panel. There are also two ports located on one header, USB4/5 (3.0).

For a detailed diagram of the H14SSL-N/NT motherboard, see the layout under "[Quick Reference](#)" on page 11.

<b>(USB 3.0) Header</b>			
<b>Pin Definitions: 20 Total</b>			
<b>Pin#</b>	<b>Definition</b>	<b>Pin#</b>	<b>Definition</b>
1	+5 V	20	Key, no pin
2	P1_SSRX-	19	+5 V
3	P1_SSRX+	18	P2_SSRX-
4	GND	17	P2_SSRX+
5	P1_SSTX-	16	GND
6	P1_SSTX+	15	P2_SSTX-
7	GND	14	P2_SSTX+
8	P1_USB2_D-	13	GND
9	P1_USB2_D+	12	P2_USB2_D-
10	GND	11	P2_USB2_D+

### **VGA Port**

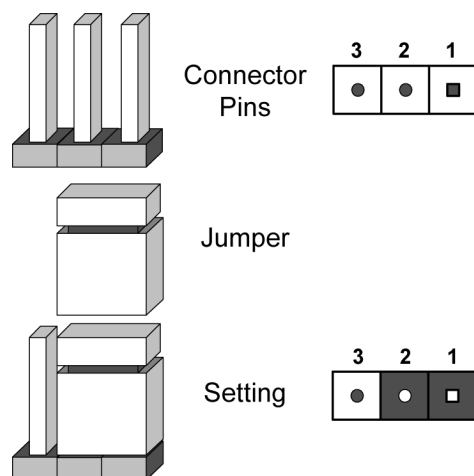
A video (VGA) port is located on the I/O ports of the motherboard. The VGA port provides analog interface support between the computer and the video displays.

For a detailed diagram of the H14SSL-N/NT motherboard, see the layout under "[Quick Reference](#)" on page 11.

### **Jumper Settings**

To modify the operation of the motherboard, jumpers can be used to choose between optional settings. Jumpers create shorts between two pins to change the function of the connector. Pin 1 is identified with a square solder pad on the printed circuit board. See the diagram below for an example of jumping pins 1 and 2. Refer to the motherboard layout page for jumper locations.

**Note:** On two-pin jumpers, "Closed" means the jumper is on and "Open" means the jumper is off the pins.



**Figure 2-22. Jumping Connector Pins**

### **CMOS Clear**

JBT1 on the H14SSL-N/NT motherboard is used to clear CMOS, which will also clear any passwords. Instead of pins, this jumper consists of contact pads to prevent accidentally clearing the contents of CMOS.

For a detailed diagram of the H14SSL-N/NT motherboard, see the layout under ["Quick Reference"](#) on page 11.



1. First power down the system and unplug the power cord(s).
2. Remove the cover of the chassis to access the motherboard.
3. Remove the onboard battery from the motherboard.
4. Short the CMOS pads, JBT1, with a metal object such as a small screwdriver for at least four seconds.

**Note:** Clearing CMOS will also clear all passwords.

5. Remove the screwdriver (or shorting device).
6. Replace the cover, reconnect the power cord(s), and power on the system.

### **LAN Enable/Disable (JPL1)**

Use JPL1 to enable or disable LAN on the H14SSL-N motherboard. The default setting is Enabled.

LAN Enable/Disable Jumper Settings	
Jumper Setting	Definition
Pins 1–2	Enabled (Default)
Pins 2–3	Disabled

### **JMCIO3 NVMe/SATA Switch (JSATA1)**

The 3-pin jumper at JSATA1 provides the option to switch the hybrid port (JMCIO3) between SATA/NVMe. Refer to the table below for pin definitions.

For a detailed diagram of the H14SSL-N/NT motherboard, see the layout under ["Quick Reference"](#) on page 11.

JSATA1 Pin Definitions	
Pin#	Definition
1–2	Auto (Depends on system configuration)
2–3	SATA
Open	NVMe

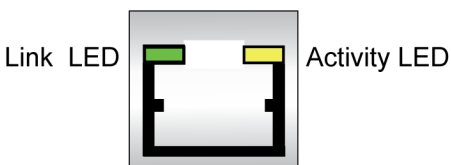
### **LED Indicators**

For information about the LED indicators on the H14SSL-N/NT motherboard, refer to the following content.

#### **LAN Port LEDs**

Each LAN port of the H14SSL-N/NT motherboard has two LEDs. The green LED indicates activity, while the other Link LED may be green, orange, or off to indicate the speed of the connection.

For a detailed diagram of the H14SSL-N/NT motherboard, see the layout under ["Quick Reference"](#) on page 11.



H14SSL-N			
LAN Link LED (Left)		LAN Activity LED (Right)	
LED State		LED State	
LED Color	Definition	LED Color	Definition
Off	10 Mbps	None	No Connection
Green: Solid	100 Mbps	None	Link, no activity
Orange: Solid	1 Gbps	Green: Flashing	Active

H14SSL-NT			
LAN Link LED (Left)		LAN Activity LED (Right)	
LED State		LED State	
LED Color	Definition	LED Color	Definition
Orange: Solid	100 Mb/s	None	No Connection
Orange: Solid	1 Gb/s	None	Link, no activity
Green: Solid	10 Gb/s	Orange: Flashing	Active

### **BMC Heartbeat LED**

A BMC Heartbeat LED is located on the H14SSL-N/NT motherboard. When this LED is blinking, the BMC is functioning normally.

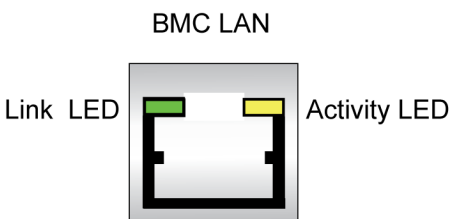
For a detailed diagram of the H14SSL-N/NT motherboard, see the layout under ["Quick Reference"](#) on page 11.

BMC Heartbeat LED Indicator	
LED Color and State	Definition
Green: Blinking	BMC Normal
Green: Solid On	During BMC Reset or Cold Boot
Green : Fast Blinking	BMC Initializing

### **BMC LAN LEDs**

The dedicated BMC LAN connection on the H14SSL-N/NT motherboard features two LEDs. The LED on the right indicates activity, and the LED on the left indicates the speed of the connection.

For a detailed diagram of the H14SSL-N/NT motherboard, see the layout under ["Quick Reference"](#) on page 11.



BMC LAN LEDs		
	Color/State	Definition
Link (left)	Orange: Solid	1 Gbps
	Green: Solid	100 Mbps
	Off	10 Mbps
Activity (right)	None	No Connection
	Orange: Solid On	Link
	Orange: Flashing	Active

### ***Onboard Power LED (LED9)***

LED9 is an onboard power OK LED. When this LED9 is lit, it means the system is turned on and all the system power rails are ready. When the system is turned off, or any one of the system power rails fail, this LED will turn off. Be sure to turn off the system and unplug the power cord before removing or installing components.

For a detailed diagram of the H14SSL-N/NT motherboard, see the layout under ["Quick Reference"](#) on page 11.

Onboard Power LED Indicator	
LED Color	Definition
Off	System Power Off (power cable not connected)
Green	System On, Power OK
Green	Blinking, BIOS initializing

### ***Unit ID (UID) LED***

The UID LED indicator is located on the H14SSL-N/NT motherboard. This UID indicator provides easy identification of a system that may need to be serviced.

For a detailed diagram of the H14SSL-N/NT motherboard, see the layout under ["Quick Reference"](#) on page 11.

<b>UID LED</b>		
<b>LED Indicator</b>		
<b>LED Color</b>	<b>State</b>	<b>Definition</b>
Blue	Solid On	Unit Identified
Blue	Blinking	Remote Unit Identified
None	Off	UID Off

---

---

# Chapter 3:

## Troubleshooting

The following content contains information on common issues and how to resolve them.

---

<b>3.1 Troubleshooting Procedures</b> .....	<b>59</b>
Before Power On .....	59
No Power .....	59
No Video .....	59
System Boot Failure .....	59
Memory Errors .....	60
Losing the System's Setup Configuration .....	60
If the System Becomes Unstable .....	60
<b>3.2 Technical Support Procedures</b> .....	<b>62</b>
<b>3.3 Motherboard Battery</b> .....	<b>63</b>
<b>3.4 Where to Get Replacement Components</b> .....	<b>64</b>
<b>3.5 Returning Merchandise for Service</b> .....	<b>65</b>
<b>3.6 Feedback</b> .....	<b>66</b>

## 3.1 Troubleshooting Procedures

Use the following procedures to troubleshoot your system. If you have followed all of the procedures below and still need assistance, refer to the ["Technical Support Procedures" on page 62](#) or ["Returning Merchandise for Service" on page 65](#) section(s) in this chapter. Always disconnect the AC power cord before adding, changing or installing any non hot-swap hardware components. If the below steps do not fix the setup configuration problem, contact your vendor for repairs.

### Before Power On

1. Make sure that there are no short circuits between the motherboard and chassis.
2. Disconnect all ribbon/wire cables from the motherboard, including those for the keyboard and mouse.
3. Remove all add-on cards.
4. Install the processor (making sure it is fully seated) and connect the front panel connectors to the motherboard.

### No Power

1. Make sure that there are no short circuits between the motherboard and the chassis.
2. Make sure that the power connectors are properly connected.
3. Check that the 115 V/230 V switch, if available, on the power supply is properly set.
4. Turn the power switch on and off to test the system, if applicable.
5. Check the processor socket for bent pins and make sure the processor is fully seated.
6. The battery on your motherboard may be old. Check to verify that it still supplies approximately 3 VDC. If it does not, replace it with a new one.

### No Video

1. If the power is on, but you do not have video, remove all add-on cards and cables.
2. Remove all memory modules and turn on the system (if the alarm is on, check the specs of memory modules, reset the memory, or try a different one).

### System Boot Failure

If the system does not display Power-On-Self-Test (POST) or does not respond after the power is turned on, do the following:

1. Check the screen for an error message.
2. Clear the CMOS settings by unplugging the power cord and contacting both pads on the CMOS clear jumper. Restart the system. Refer to ["CMOS Clear" on page 53](#).
3. Remove all components from the motherboard and turn on the system with only one DIMM installed. If the system boots, turn off the system and repopulate the components back into the system to retest. Add one component at a time to isolate which one may have caused the system boot issue.

## Memory Errors

When suspecting faulty memory is causing the system issue, check the following:

1. Make sure that the memory modules are compatible with the system and are properly installed. See ["Component Installation" on page 23](#) for installation instructions. (For memory compatibility, refer to the "Tested Memory List" link on the motherboard's product page to see a list of supported memory.)
2. Check if different speeds of DIMMs have been installed. It is strongly recommended that you use the same RAM type and speed for all DIMMs in the system.
3. Make sure that you are using the correct type of DIMMs recommended by the manufacturer.
4. Check for bad DIMMs or slots by swapping a single module among all memory slots and check the results.

## Losing the System's Setup Configuration

1. Make sure that you are using a high-quality power supply. A poor-quality power supply may cause the system to lose the CMOS setup information. Refer to ["Introduction" on page 10](#) for details on recommended power supplies.
2. The battery on your motherboard may be old. Check to verify that it still supplies approximately 3 VDC. If it does not, replace it with a new one.

## If the System Becomes Unstable

If the system becomes unstable during or after OS installation, check the following:

1. Processor/BIOS support: Make sure that your processor is supported and that you have the latest BIOS installed in your system.

2. Memory support: Make sure that the memory modules are supported. Refer to the product page on our website at <https://www.supermicro.com>. Test the modules using memtest86 or a similar utility.

**Note:** Click on the "Tested Memory List" link on the motherboard's product page to see a list of supported memory.

3. Storage Drive support: Make sure that all storage drives work properly. Replace the failed storage drives with good ones.
4. System cooling: Check the system cooling to make sure that all heatsink fans and processor/system fans, etc., work properly. Check the hardware monitoring settings in the IPMI to make sure that the processor and system temperatures are within the normal range. Also, check the front panel Overheat LED and make sure that it is not on.
5. Adequate power supply: Make sure that the power supply provides adequate power to the system. Make sure that all power connectors are connected. Refer to our website for more information on the minimum power requirements.
6. Proper software support: Make sure that the correct drivers are used.

If the system becomes unstable before or during OS installation, check the following:

1. Source of installation: Make sure that the devices used for installation are working properly, including boot devices such as a USB flash or media device.
2. Cable connection: Check to make sure that all cables are connected and working properly.
3. Use the minimum configuration for troubleshooting: Remove all unnecessary components (starting with add-on cards first), and use the minimum configuration (but with the processor and a memory module installed) to identify the trouble areas. Refer to the steps listed above in this section for proper troubleshooting procedures.
4. Identify bad components by isolating them: If necessary, remove a component in question from the chassis, and test it in isolation to make sure that it works properly. Replace a bad component with a good one.
5. Check and change one component at a time instead of changing several items at the same time. This will help isolate and identify the problem.
6. To find out if a component is good, swap this component with a new one to see if the system will work properly. If so, then the old component is bad. You can also install the component in question in another system. If the new system works, the component is good and the old system has problems.

## 3.2 Technical Support Procedures

Before contacting Technical Support, take the following steps. Also, note that as a motherboard manufacturer, Supermicro also sells motherboards through its channels, so it is best to first check with your distributor or reseller for troubleshooting services. They should know of any possible problems with the specific system configuration that was sold to you.

1. Refer to "Troubleshooting Procedures" on page 59 or see the FAQs on our website (<https://www.supermicro.com/FAQ/index.php>) before contacting Technical Support.
2. BIOS upgrades can be downloaded from our website ([https://www.supermicro.com/support/resources/bios\\_ipmi.php](https://www.supermicro.com/support/resources/bios_ipmi.php)).
3. If you still cannot resolve the problem, include the following information when contacting Supermicro for technical support:
  - Motherboard model and PCB revision number
  - BIOS release date/version (This can be seen on the initial display when your system first boots up.)
  - System configuration
4. An example of a Technical Support form is on our website at <https://webpr3.supermicro.com/SupportPortal>.
5. Distributors: For immediate assistance, have your account number ready when placing a call to our Technical Support department. For Supermicro contact information, refer to "Contacting Supermicro" on page 9.

### 3.3 Motherboard Battery

For information on removing, disposing of, and replacing the motherboard battery of your system, refer to ["Battery Removal and Installation"](#) on page 45.

## 3.4 Where to Get Replacement Components

If you need replacement parts for your H14SSL-N/NT motherboard, to ensure the highest level of professional service and technical support, purchase exclusively from our Supermicro Authorized Distributors/System Integrators/Resellers. A list can be found on the Supermicro website:

<https://www.supermicro.com>

Under the "Buy" menu, click the "Where to Buy" link.

## 3.5 Returning Merchandise for Service

A receipt or copy of your invoice marked with the date of purchase is required before any warranty service will be rendered. You can obtain service by calling your vendor for a Returned Merchandise Authorization (RMA) number. When returning the motherboard to the manufacturer, the RMA number should be prominently displayed on the outside of the shipping carton, and the shipping package is mailed prepaid or hand-carried. Shipping and handling charges will be applied for all orders that must be mailed when service is complete.

For faster service, RMA authorizations can be requested online at the following page:

<https://www.supermicro.com/RmaForm>

Whenever possible, repack the motherboard in the original Supermicro carton, using the original packaging material. If these are no longer available, be sure to pack the motherboard securely, using packaging material to surround the motherboard so that it does not shift within the carton and become damaged during shipping.

This warranty only covers normal consumer use and does not cover damages incurred in shipping or from failure due to the alternation, misuse, abuse or improper maintenance of products.

During the warranty period, contact your distributor first for any product problems.

## 3.6 Feedback

Supermicro values your feedback as we strive to improve our customer experience in all facets of our business. Email us at [Techwriterteam@supermicro.com](mailto:Techwriterteam@supermicro.com) to provide feedback on our manuals.

## Chapter 4:

# UEFI BIOS

The following content contains information on BIOS configuration with the H14SSL-N/NT motherboard.

---

<b>4.1 Introduction</b> .....	<b>68</b>
<b>4.2 Main Setup</b> .....	<b>70</b>
<b>4.3 Advanced Setup Configurations</b> .....	<b>72</b>
<b>4.4 BMC</b> .....	<b>98</b>
<b>4.5 Event Logs</b> .....	<b>102</b>
<b>4.6 Security</b> .....	<b>104</b>
<b>4.7 Boot</b> .....	<b>106</b>
<b>4.8 Save &amp; Exit</b> .....	<b>108</b>

## 4.1 Introduction

This chapter describes the AMIBIOS™ Setup utility for the motherboard. The BIOS is stored on a chip and can be easily upgraded using the UEFI script (flash.nsh), the BMC WebUI, or the SuperServer Automation Assistant (SAA) utility.

**Note:** Due to periodic changes to the BIOS, some settings may have been added or deleted and might not yet be recorded in this manual. Refer to the Manual Download area of our website for any changes to BIOS that may not be reflected in this manual.

### Updating BIOS

It is recommended that you do not upgrade your BIOS if you are not experiencing any problems with your system. Updated BIOS files are located on our website at the following page:

[https://www.supermicro.com/support/resources/bios\\_ipmi.php](https://www.supermicro.com/support/resources/bios_ipmi.php)

Check our BIOS warning message and the information on how to update your BIOS on our website. Select your motherboard model and download the BIOS file to your computer. Also, check the current BIOS revision to make sure that it is newer than your BIOS before downloading.

**Important:** Do not shut down or reset the system while updating the BIOS to prevent possible system boot failure! Read the motherboard README file carefully before you perform the BIOS update.

Unzip the BIOS file onto a bootable USB device and then boot into the built-in UEFI Shell and type "flash.nsh <BIOS filename><BMC Username><BMC Password>" to start the BIOS update. The flash script will invoke the SUM (EFI) tool automatically to perform the BIOS update, beginning with uploading the BIOS image to BMC. After uploading the firmware, the system will reboot to continue the process. The BMC will take over and continue the BIOS update in the background. The process will take 3–5 minutes.

### Starting the Setup Utility

To enter the BIOS Setup utility, press the <Delete> key while the system is booting-up. In most cases, the <Delete> key is used to invoke the BIOS Setup screen. There are a few cases when other hot keys are used, such as <F1>, <F2>, etc. Each main BIOS menu option is described in this manual.

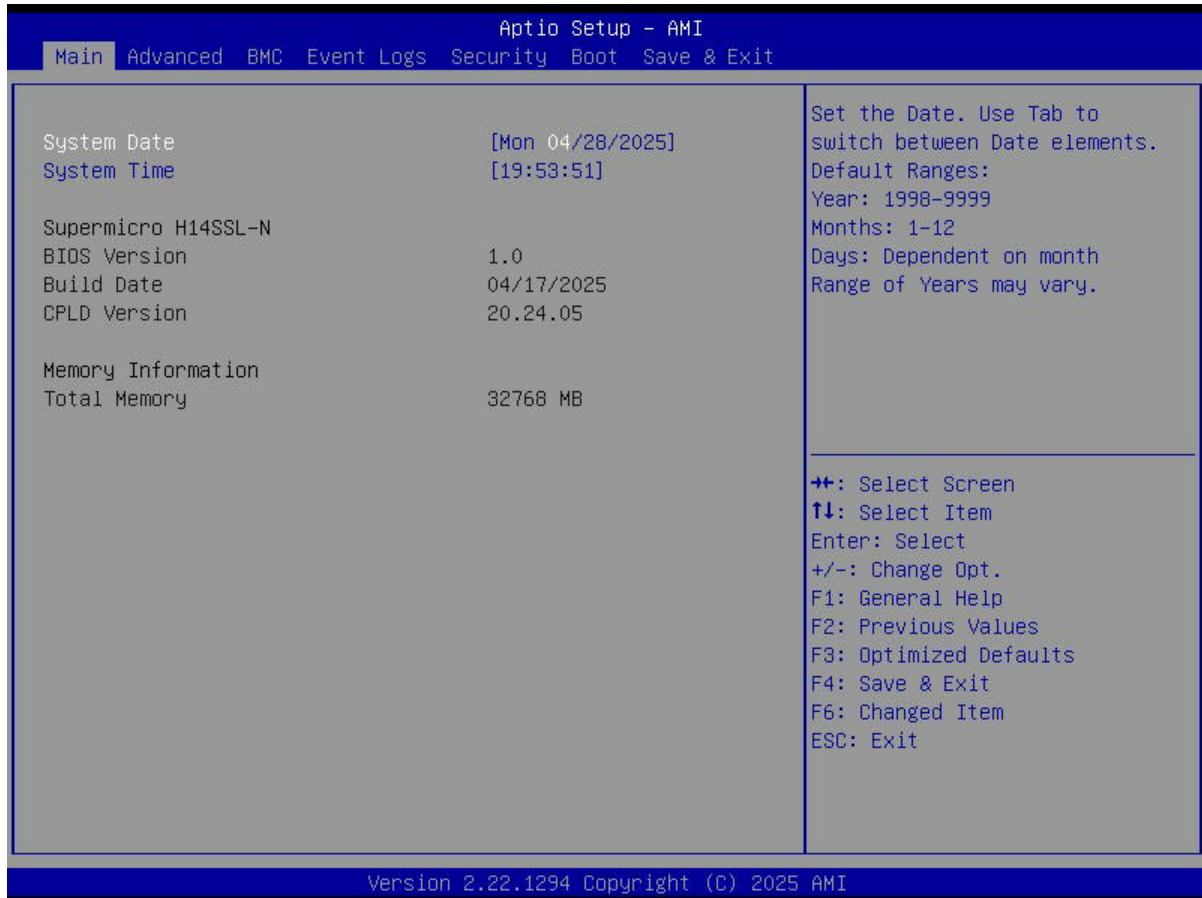
The Main BIOS screen has two main frames. The left frame displays all the options that can be configured. "Grayed-out" options cannot be configured. The right frame displays the key legend. Above the key legend is an area reserved for a text message. When a BIOS submenu or item is selected in the left frame, it is highlighted in white. Often a text message will accompany it. (Note that BIOS has default text messages built in. We retain the option to include, omit, or change any of these text messages.) Settings printed in **Bold** are the default values.

A "▶" indicates a submenu. Highlighting such an item and pressing the <Enter> key open the list of settings within that submenu.

The BIOS Setup utility uses a key-based navigation system called hot keys. Most of these hot keys (<F1>, <F2>, <F3>, <F4>, <F5>, <F6>, <Enter>, <ESC>, the arrow keys, etc.) can be used at any time during the setup navigation process.

## 4.2 Main Setup

The Main setup screen appears when the AMI BIOS Setup utility is first entered. To return to the Main setup screen, select the Main tab at the top of the screen. The Main BIOS setup screen is shown below.



**Figure 4-1. UEFI BIOS Main Tab Screen**

### System Date/System Time

Use the two features to change the system date and time. Highlight **System Date** or **System Time** using the arrow keys. Enter new values using the keyboard. Press the <Tab> key or the arrow keys to move between fields. The date must be entered in MM/DD/YYYY format. The time is entered in HH:MM:SS format.

**Note:** The time is in the 24-hour format. For example, 5:30 P.M. appears as 17:30:00.

### Supermicro H14SSL-N/NT

#### BIOS Version

This feature displays the version of the BIOS ROM used in the system.

**Build Date**

This feature displays the date when the version of the BIOS ROM used in the system was built.

**CPLD Version**

This feature displays the version of the Complex-Programmable Logical Device (CPLD) used in the system.

**Memory Information****Total Memory**

This feature displays the total size of memory available in the system.

## 4.3 Advanced Setup Configurations

Use the arrow keys to select the Advanced submenu and press <Enter> to access the submenu items.

**Important:** Use caution when changing the Advanced settings. An incorrect value, an improper DRAM frequency, or a wrong BIOS timing setting may cause the system to malfunction. When this occurs, revert the setting to the manufacture default settings.

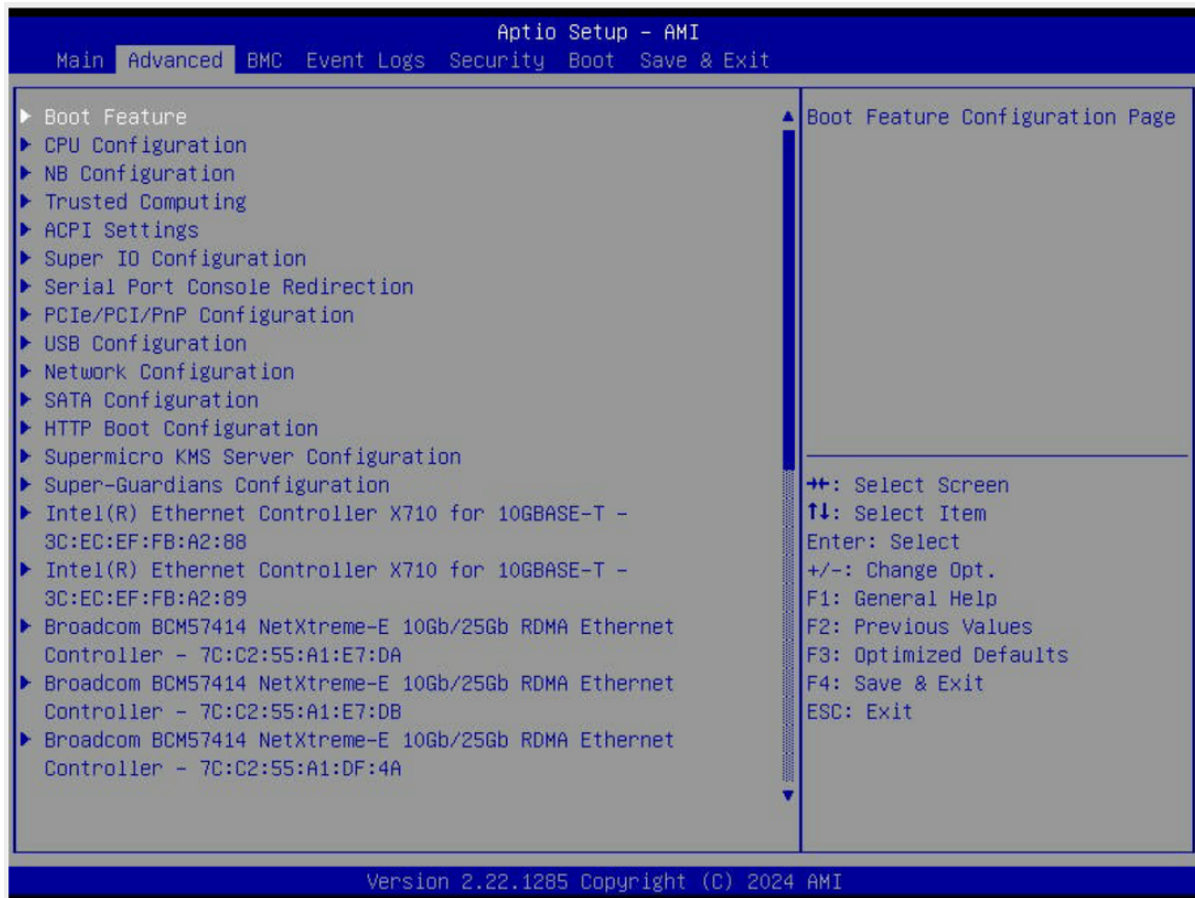


Figure 4-2. Advanced BIOS Screen

### Boot Feature Menu

#### ► Boot Feature

##### Quiet Boot

Use this feature to select the screen between displaying the Power-on Self Test (POST) messages or the OEM logo upon bootup. Select Disabled to display the POST messages. Select Enabled to display the OEM logo instead of the normal POST messages. The options

are Disabled and **Enabled**.

**Note:** BIOS POST messages are always displayed regardless of the setting of this feature.

### **Option ROM Messages**

Use this feature to set the display mode for the Option ROM. Select Keep Current to display the current AddOn ROM display settings. Select Force BIOS to use the Option ROM display mode set by the system BIOS. The options are **Force BIOS** and Keep Current.

### **Bootup NumLock State**

Use this feature to set the Power-on state for the <Numlock> key. The options are **On** and Off.

### **Wait For "F1" If Error**

Select Enabled to force the system to wait until the <F1> key is pressed if an error occurs. The options are **Disabled** and Enabled.

### **Re-try Boot**

If this feature is set to Enabled, the system BIOS will automatically reboot the system from an Extensible Firmware Interface (EFI) boot device after an initial boot failure. The options are **Disabled** and Enabled.

### **Power Configuration**

#### **Watch Dog Function**

Select Enabled to allow the Watch Dog timer to reboot the system when it is inactive for more than five minutes. The options are **Disabled** and Enabled.

#### **Watch Dog Action (Available when "Watch Dog Function" is set to Enabled)**

Use this feature to configure the Watch Dog Time\_out setting. The options are **Reset** and NMI.

#### **Restore on AC Power Loss**

Use this feature to set the power state after a power outage. Select Stay Off for the system power to remain off after a power loss. Select Power On for the system power to be turned on after a power loss. Select Last State to allow the system to resume its last power state before a power loss. The options are Stay Off, Power On, and **Last State**.

#### **Power Button Function**

This feature controls how the system shuts down when the power button is pressed. Select 4 Seconds Override to power off the system after pressing and holding the power button for four seconds or longer. Select Instant Off to instantly power off the system as soon as you press the power button. The options are **Instant Off** and 4 Seconds Override.

## CPU Configuration Menu

### Workload Profile

This function allows configuring the BIOS settings to match the selected workload. The options are **Disabled**, HPC, I/O, Virtualization, Telco NFVI, Telco NFVI-FP, and Telco FlexRAN.

### SMT Control

This setting is used to disable symmetric multithreading. To re-enable SMT, a power cycle is needed after selecting the Enable option. Select Auto based on BIOS PCD default setting. The options are Disabled, Enabled, and **Auto**.

### Core Performance Boost

Disable CPB. The options are Disabled and **Auto**.

### Global C-state Control

Controls IO based C-state generation and DF C-states. The options are Disabled, Enabled, and **Auto**.

### ACPI CST C2 Latency

Use this setting to enter in microseconds the decimal value. Larger C2 latency values will reduce the number of C2 transitions and reduce C2 residency. Fewer transitions can help when the performance is sensitive to the latency of C2 entry and exit. The default value is **100**.

### PPIN Opt-in

Select Unlock/Enabled to use the Protected Processor Inventory Number (PPIN) in the system. The PPIN is a unique number set for tracking a given processor. The options are Disabled, Enabled, and **Auto**.

### SMEE

This setting controls Secure Memory Encryption (SME) for the system. The options are Disabled, Enabled, and **Auto**.

### Fast Short REP MOVSB (FSRM)

The default is 1, but it can be set to zero for analysis purposes as long as the OS supports it. The options are **Auto**, Enabled, and Disabled.

### Enhanced REP MOVSB/STOSB (ERSM)

This setting optimizes CPU string operations. Disabling ERSM (setting it to 0) can be useful for performance analysis if supported by the operating system. The options are Disabled, Enabled, and **Auto**.

### AVX512

Enable or disable AVX512. The options are **Auto**, Enabled, and Disabled.

### Monitor and MWAIT Disable

This setting controls the availability of the MONITOR, MWAIT, MONITORX, and MWAITX opcodes, which are used for power management and synchronization. The options are Enabled, Disabled, and **Auto**.

### L1 Stream HW Prefetcher

This setting is used to enable or disable the L1 Stream Hardware Prefetcher. The options are Disabled, Enabled, and **Auto**.

### L2 Stream HW Prefetcher

This setting is used to enable or disable the L2 Stream Hardware Prefetcher. The options are Disabled, Enabled, and **Auto**.

### CCD Control

Sets the number of active CCDs. A power cycle is required once this option has been used to remove any CCDs. The options are **Auto**, 2 CCDs, 4 CCDs, 6 CCDs, 8 CCDs, 10 CCDs, 12 CCDs, and 14 CCDs.

### Core Control

Sets the number of cores to be used. Once this option has been used to remove any cores, a power cycle is required for future selections to take effect. The options are **Auto**, ONE (1+0), TWO (2+0), THREE (3+0), FOUR (4+0), FIVE (5 +0), SIX (6+0), SEVEN (7+0), TWO (1+1), FOUR (2+2), SIX (3+3), EIGHT (4+4), TEN (5+5), TWELVE (6+6), and FOURTEEN (7+7).

### SVM Mode

This setting enables or disables CPU Virtualization. The options are Disabled and **Enabled**.

### ► CPU1 Information

Changing the designed PCIe port bifurcation.

CPU information listed,

CPU1 PCIe Package Group P2 The options are **Auto**, x4x4x4x4, x4x4x8, x8x4x4, x8x8, and x16

CPU1 PCIe Package Group G2

CPU1 PCIe Package Group P3

CPU1 PCIe Package Group G3

CPU1 PCIe Package Group P1

CPU1 PCIe Package Group G1

CPU1 PCIe Package Group P0

CPU1 PCIe Package Group G0

## NB Configuration

### North Bridge Configuration

#### IOMMU

Use this setting to enable or disable IOMMU. The options are Disabled, Enabled, and **Auto**.

#### DMAr Support

Use this setting to enable DMAr system protection during POST (Power-On Self-Test). The options are Disabled, Enabled, and **Auto**.

#### DMA Protection

Use this setting to enable DMA remap support in the IVRS IVinfo field. The options are **Auto**, Enabled, and Disabled.

#### DRTM Virtual Device Support

This enables or disables the DRTM ACPI Virtual device. The options are Disabled, Enabled, and **Auto**.

#### DRTM Memory Reservation

This setting reserves 128 MB of memory below for DRTM security functions. It is required for secured-core servers. The options are Disabled, Enabled, and **Auto**.

#### ACS Enable

This setting enables Access Control Service (ACS) functionality, which requires AER to be active. The options are Enabled, Disabled, and **Auto**.

#### TDP Control

Use this setting to set the processor's power consumption (TDP). The options are Manual and **Auto**.

#### Package Power Limit Control

Use Auto to apply the default power limit (PPT) or Manual to set a custom PPT. The options are Manual and **Auto**.

#### Determinism Control

Use this setting to configure the level of performance determinism. The options are Manual and **Auto**.

#### APBDIS

Use this setting to control the APBDIS feature. A value of 0 indicates "not APBDIS" (mission mode). The options are 0, 1, and **Auto**.

### **Power Profile Selection**

Use this setting to select a power profile to optimize performance or efficiency. The options are High Performance Mode, Efficiency Mode, Maximum IO Performance Mode, Balanced Memory Performance Mode, Balanced Core Performance Mode, Balanced Core Memory Performance Mode, and **Auto**.

### **DF Cstates**

This setting controls the power-saving states of the data fabric. The options are Disabled, Enabled, and **Auto**.

### **Data Link Feature Cap**

This setting control the activation of advanced data link features. The options are Enabled, Disabled, and **Auto**.

### **SEV-SNP Support**

This setting controls the activation of Secure Encrypted Virtualization - Secure Nested Paging (SEV-SNP) security features. The options are Disabled, Enabled, and **Auto**.

### **Periodic Training**

This setting controls the method for managing power-saving states. The options are Disabled and **Legacy**.

### **EQ Bypass To Highest Rate**

This setting determines whether the system can bypass equalization steps at lower data rates and directly attempt equalization at the highest supported rate during the link setup process. The options are Disable, Enable, and **Auto**.

### **CXL Memory Attribute**

This setting determines the memory type for CXL devices. The options are **Auto**, Enabled, and Disabled.

### **Sync Header Bypass**

This setting controls the inclusion of synchronization headers in data transmissions. The options are **Auto**, Enabled, and Disabled.

## **► xGMI Configuration**

### **xGMI Force Link Width Control (available when xGMI Link Width Control is set to Manual)**

This setting forces a specific link width for the xGMI interface, overriding automatic settings for manual control. The options are **Auto**, Unforce, and Force.

### **xGMI Link Max Speed**

This setting controls the maximum speed of the xGMI link. The options are 20 Gbps, 25 Gbps, 32 Gbps, and **Auto**.

## **► Memory Configuration**

### **Memory Target Speed**

Use this setting to specify the memory target speed in MT/s. The options are **Auto**, DDR3600, DDR4000, DDR4400, DDR4800, and DDR5200.

### **Memory Interleaving**

This setting controls fabric level memory interleaving. Note that the channel, die and socket have requirements on memory populations and it will be ignored if the memory doesn't support the selected option. The options are Disabled, Enabled, and **Auto**.

### **Chipselect Interleaving**

This setting allows memory blocks to be interleaved across the DRAM chip selects for node 0, which can enhance memory performance. The options are Disabled and **Auto**.

### **BankSwapMode**

This setting determines the operation of memory banks in relation to CPU usage. The options are **Auto**, Disabled, and Swap CPU.

### **Power Down Enable**

Use this setting to enable or disable DDR power down mode. The options are Disabled, Enabled, and **Auto**.

### **DRAM Scrub Time**

This setting specifies the frequency of memory scrubbing, which helps maintain data integrity by refreshing memory contents. The options are Disabled, 1 hour, 4 hours, 6 hours, 8 hours, 12 hours, 16 hours, **24 hours**, and 48 hours.

### **TSME**

This setting controls the Transparent Secure Memory Encryption feature. The options are **Auto**, Enabled, and Disabled.

### **Enhanced PPR**

Use this setting to enable a full memory test during system setup. While this thorough testing can enhance system stability, it will also increase the overall boot time. The options are **Disabled** and Enabled.

## ► CPU1 Memory Information

View memory information for CPU1.

## ACPI Settings Menu

### ► ACPI Settings

#### High Precision Event Timer

Enable the High Precision Event Timer. The default is **Enabled**.

#### PCI AER Support

Use this setting to enable ACPI OS to natively manage PCI advanced error reporting. The default is **Disabled**.

#### NUMA Nodes per Socket

A NUMA architecture divides hardware resources, including processors, memory, and I/O buses, into groups, called NUMA nodes. This setting specifies the number of desired NUMA nodes per sockets. Selecting Zero will attempt to interleave the two sockets together. **Auto** is equivalent to NPS1.

#### ACPI SRAT L3 Cache As NUMA Domain

This setting determines how the system's NUMA (Non-Uniform Memory Access) domains are defined in relation to the L3 cache. The options are Disabled, Enabled, and **Auto**.

## Super IO Configuration Menu

### ► Super IO Configuration

**Note:** This submenu is available when your system supports this feature.

The following information is displayed.

- Super IO Chip

Select for Serial Port 1 or Serial Port 2.

### *Serial Port 1 Configuration Menu*

#### Serial Port 1 Configuration

##### Serial Port 1

Select Enabled to enable serial port 1. The options are Disabled and **Enabled**.

**Device Settings (Available when "Serial Port 1" above is set to Enabled)**

This feature displays the base I/O port address and the Interrupt Request address of serial port 1.

**Change Settings (Available when "Serial Port 1" above is set to Enabled)**

Use this feature to specify the base I/O port address and the Interrupt Request address of serial port 1. Select Auto for the BIOS to automatically assign the base I/O and IRQ address to serial port 1. The options are **Auto**, (IO=3F8h; IRQ=4;), (IO=3F8h; IRQ=3,4,5,6,7,9,10,11,12;), (IO=2F8h; IRQ=3,4,5,6,7,9,10,11,12;), (IO=3E8h; IRQ=3,4,5,6,7,9,10,11,12;), and (IO=2E8h; IRQ=3,4,5,6,7,9,10,11,12;).

## **Serial Port 2 Configuration Menu**

**Serial Port 2 Configuration****Serial Port 2/SOL ("Serial Port 2" or "SOL" based on your system support)**

Select Enabled to enable serial port 2 (or SOL). The options are Disabled and **Enabled**.

**Device Settings (Available when "Serial Port 2/SOL" above is set to Enabled)**

This feature displays the base I/O port address and the Interrupt Request address of serial port 2 (or SOL).

**Change Settings (Available when "Serial Port 2/SOL" above is set to Enabled)**

Use this feature to specify the base I/O port address and the Interrupt Request address of serial port 2 (or SOL). Select Auto for the BIOS to automatically assign the base I/O and IRQ address to serial port 2 (or SOL).

The options are **Auto**, (IO=2F8h; IRQ=3;), (IO=3F8h; IRQ=3,4,5,6,7,9,10,11,12;), (IO=2F8h; IRQ=3,4,5,6,7,9,10,11,12;), (IO=3E8h; IRQ=3,4,5,6,7,9,10,11,12;), and (IO=2E8h; IRQ=3,4,5,6,7,9,10,11,12;).

**Serial Port 2 Attribute (Available for Serial Port 2 only)**

Select SOL to use serial port 2 as a Serial Over LAN (SOL) port for console redirection. The options are **SOL** and COM.

## **Serial Port Console Redirection Menu**

**COM1 (Available when your system supports the serial port of COM1)****Console Redirection**

Select Enabled to enable COM port 1 for Console Redirection, which allows a client machine to be connected to a host machine at a remote site for networking. The options are **Disabled** and Enabled.

**Note:** This feature will be set to Enabled if there is no BMC support.

## ► Console Redirection Settings

**Note:** This submenu is available when "Console Redirection" for COM1 or SOL/COM2 is set to Enabled.

### Out-of-Band Mgmt Port

The feature selects a serial port in a client server to be used by the Microsoft Windows Emergency Management Services (EMS) to communicate with a remote host server. The options are **COM1** and SOL/COM2. Please note that the option of SOL/COM2 indicates a shared serial port. SOL is available with BMC support.

### Terminal Type

Use this feature to select the target terminal emulation type for Console Redirection. Select VT100 to use the ASCII Character set. Select VT100+ to add color and function key support. Select ANSI to use the Extended ASCII Character Set. Select VT-UTF8 to use UTF8 encoding to map Unicode characters into one or more bytes. The options are VT100, **VT100+**, VT-UTF8, and ANSI.

### Bits Per Second EMS

This feature sets the transmission speed for a serial port used in Console Redirection. Make sure that the same speed is used in the host computer and the client computer. A lower transmission speed may be required for long and busy lines. The options are 9600, 19200, 57600, and **115200** (bits per second).

### Flow Control EMS

Use this feature to set the flow control for Console Redirection to prevent data loss caused by buffer overflow. Send a "Stop" signal to stop sending data when the receiving buffer is full. Send a "Start" signal to start sending data when the receiving buffer is empty. The options are **None**, Hardware RTS/CTS, and Software Xon/Xoff.

The following information is displayed.

- **Data Bits EMS**
- **Parity EMS**
- **Stop Bits EMS**

## ► Legacy Console Redirection Settings

### Legacy Serial Redirection Port

Select a COM port to display redirection of legacy OS and legacy OPROM messages. The options are **COM1** and SOL/COM2.

### Resolution

On legacy OS, the number of rows and columns supported redirection. The options are 80x24 and **80x25**.

### Redirection After BIOS Post

When bootloader is selected, then legacy console redirection is disabled before booting to legacy OS. When always is select, then legacy console redirection is enabled for legacy OS. The options are **Always Enable** and BootLoader.

### Serial Port for Out-of-Band Management/Windows Emergency Management Services (EMS)

The feature allows you to configure Console Redirection settings to support Out-of-Band Serial Port management.

### Console Redirection EMS

Select Enabled to use the SOL port for Console Redirection. The options are **Disabled** and Enabled.

## PCIe/PCI/PnP Configuration Menu

### PCI Bus Driver Version

This item displays the PCI bus driver version.

### PCI Devices Common Settings

#### Re-Size BAR Support

This setting enables or disables the Re-Size Base Address Register feature for compatible PCIe devices, which allows the system to allocate more memory to the device. The options are Disabled and **Enabled**.

#### SR-IOV Support

This setting enables or disables Single Root I/O Virtualization support for the system's PCIe devices. The options are Disabled and **Enabled**.

#### BME DMA Mitigation

This setting enables or disables Bus Mastering Error (BME) Direct Memory Access (DMA) mitigation for protection during the pre-boot process. The options are **Disabled** and Enabled.

**ASPM Support**

Configure the Active State Power Management (ASPM) level for PCIe links to optimize power consumption and performance. The options are **Disabled**, Auto, and Force L1.

**PCIe ARI Support**

This setting enables alternative routing-ID interpretation. The options are Disabled, Enabled, and **Auto**.

**PCIe ARI Enumeration**

This setting controls the forwarding of Alternate Routing-ID Interpretation (ARI) information for each downstream port, which is essential for device identification in PCIe systems. The options are Disabled, Enabled, and **Auto**.

**Relaxed Ordering**

This setting determines whether PCI Express devices are permitted to bypass strict transaction ordering, which can lead to potential performance improvements. The options are Disabled and **Enabled**.

**Clock Spread Spectrum**

This setting allows the BIOS to monitor and reduce the level of Electromagnetic Interference (EMI) generated by system components. The options are **Disabled** and Enabled.

**No Snoop**

This setting configures the No Snoop option for PCI Express devices, determining whether memory accesses bypass the cache. The options are Disabled and **Enabled**.

**VGA Priority**

This setting allows you to choose the primary video output source for the system. The options are **Onboard** and External.

**PCIe Ten Bit Tag Support**

This setting enables the use of ten-bit tags for PCIe devices, which can improve data handling and management. The options are Disabled, Enabled, and **Auto**.

**NVMe Firmware Source**

This setting determines the source of firmware for NVMe devices, allowing you to select between native support or vendor-specific firmware. The options are **Vendor Defined Firmware** and AMI Native Support.

**PCI Devices Option ROM Setting**

This setting controls Option ROMs on PCI/PCIe cards for device initialization. Available options depend on installed hardware.

### Onboard Video Option ROM

This setting selects the type of firmware to be loaded for onboard video. The options are Disabled and **EFI**.

### M.2-H1 OPROM

This setting enables or disables the Option ROM for the M.2-C1 slot. The options are Disabled and **EFI**.

### M.2-H2 OPROM

This setting enables or disables the Option ROM for the M.2-C2 slot. The options are Disabled and **EFI**.

## USB Configuration

USB Configuration

USB Module Version

USB Controllers: 2 XHCIs

USB Devices: 1 Keyboard, 1 Mouse, 3 Hubs

### XHCI Hand-off

This setting provides a workaround for operating systems that do not support XHCI hand-off. The XHCI ownership change must be claimed by the XHCI driver. The options are **Enabled** and Disabled.

## Network Configuration Menu

### Network Stack

This setting enables the UEFI network stack. The options are Disabled and **Enabled**.

### IPv4 PXE Support

This setting enables IPv4 PXE boot support. The options are Disabled and **Enabled**.

### IPv6 HTTP Support

This setting enables IPv6 HTTP boot support. The options are Disabled and **Enabled**.

### PXE Boot Wait Time

This sets the wait time, in seconds, to press the ESC key to abort the PXE boot. Use either =/ or numeric keys to set the value. The default value is **0**.

## Media Detect Count

This sets the number of times the presence of media will be checked. Use either +/- or numeric keys to set the value. The default value is **1**.

### ► IPv4 Network Configuration

#### Configured

This setting indicates whether the network address configured successfully. The options are Disabled and **Enabled**.

#### Enable DHCP

The options are **Disabled** and Enabled.

#### Local IP Address

Enter and IP address.

#### Local NetMask

Enter the Netmask address.

#### Local Gateway

Enter the Gateway IP address.

#### Local DNS Servers

Enter the DNS servers IP addresses.

#### Save Changes and Exit

The options are **Yes** and no.

### ► IPv6 Network Configuration

Set IPv6 Network parameters.

#### ► Enter Configuration Menu

Interface Name

Interface Type

MAC address

Host addresses

Route Table

Gateway addresses

DNS addresses

Interface ID

### **DAD Transmit Count**

The number of consecutive Neighbor Solicitation messages sent while performing Duplicate Address Detection on a tentative address. A value of zero indicates that Duplicate Address Detection is not performed. The default value is **1**.

## **► Advanced Configuration**

**Note:** This submenu is available when "Policy" is set to Manual.

### **New IPv6 address**

Use this to set a new manual IP address. It can only be configured under manual policy.

### **New Gateway addresses**

Use this to set new gateway addresses. Gateway IP addresses can only be configured under manual policy.

### **New DNS addresses**

Use this to set new DNS addresses. DNS addresses can only be configured under manual policy.

### **Commit Changes and Exit**

### **Discard Changes and Exit**

### **Policy**

Use this feature to select how the policy is to be configured. The options are **Automatic** and **Manual**.

### **Save Changes and Exit**

The options are **Yes** and **No**.

## **► Advanced Configuration**

**Note:** This submenu is available when "Policy" is set to Manual.

### **New IPv6 address**

Use this to set a new manual IP address. It can only be configured under manual policy.

### **New Gateway addresses**

Use this to set new gateway addresses. Gateway IP addresses can only be configured under manual policy.

#### **New DNS addresses**

Use this to set new DNS addresses. DNS addresses can only be configured under manual policy.

#### **Commit Changes and Exit**

#### **Discard Changes and Exit**

#### **Save Changes and Exit**

The options are **Yes** and **No**.

## **SATA Configuration Menu**

### **SATA Configuration**

#### **SATA Enable**

Disable or enable the OnChip SATA controller. The options are Disabled, Enabled, or **Auto**.

#### **SATA Information**

Provides SATA devices information.

## **HTTP Boot Configuration Menu**

### **HTTP Boot Configuration**

#### **HTTP Boot Policy**

Use this feature to set the HTTP boot policy. The options are Apply to all LANs, **Apply to each LAN**, and Boot Priority #1 instantly.

#### **HTTPS Boot Checks Hostname**

**Important:** Disabling "HTTPS Boot Checks Hostname" is a violation of RFC 6125 and may expose you to Man-in-the-Middle Attacks. Supermicro is not responsible for any and all security risks incurred by you disabling this feature.

This setting determines whether HTTPS Boot verifies that the hostname in the server's TLS certificate matches the hostname of the remote server. The options are **Enabled** and Disabled (WARNING: Security Risk!!).

#### **Priority of HTTP Boot**

#### **Instance of Priority 1: (Available when your motherboard supports this feature)**

This feature sets the rank target port. The default setting is **1**.

### Select IPv4 or IPv6

This feature specifies which connection the target LAN port should boot from. The options are **IPv4** and IPv6.

### Boot Description

Use this feature to enter a boot description, which cannot be longer than 75 characters. Please be sure to enter a boot description; otherwise, the boot option for the URI cannot be created.

### Boot URI

Enter a Boot Uniform Research Identifier (URI) with 128 characters or shorter. This Boot URI determines how IPv4 Boot Option and IPv6 Boot Option will be created. This feature is only supported on Dual or EFI Boot Mode.

## Supermicro KMS Server Configuration Menu

### ► Supermicro KMS Server Configuration

**Note:** Be sure to configure all the features in the submenu of Supermicro KMS Server Configuration and the feature of "KMS Security Policy" in the submenu of Super-Guardians Configuration so that your system can communicate with the KMS server.

### Supermicro KMS Server IP address

Use this feature to set the Supermicro Key Management Service (KMS) server IPv4 address in dotted-decimal notation.

### Second Supermicro KMS Server IP address

Use this feature to set the second Supermicro KMS server IPv4 address in dotted-decimal notation.

### Supermicro KMS TCP Port number

Use this feature to set the TCP port number used in Supermicro KMS Server. The valid range is 100–9999. The default setting is **5696**. Do not change the default setting unless a different TCP port number has been specified and used in the Supermicro KMS Server.

### KMS Time Out

Use this feature to enter the KMS server connecting time-out (in seconds). The default setting is **5** (seconds).

### TimeZone

Use this feature to set the correct time zone. The default setting is **0** (not specified).

**Client UserName**

Press <Enter> to set the client identity (UserName). The username can be between 0 and 63 characters in length.

**Client Password**

Press <Enter> to set the client identity (Password). The password can be between 0 and 31 characters in length.

**▶ CA Certificate**

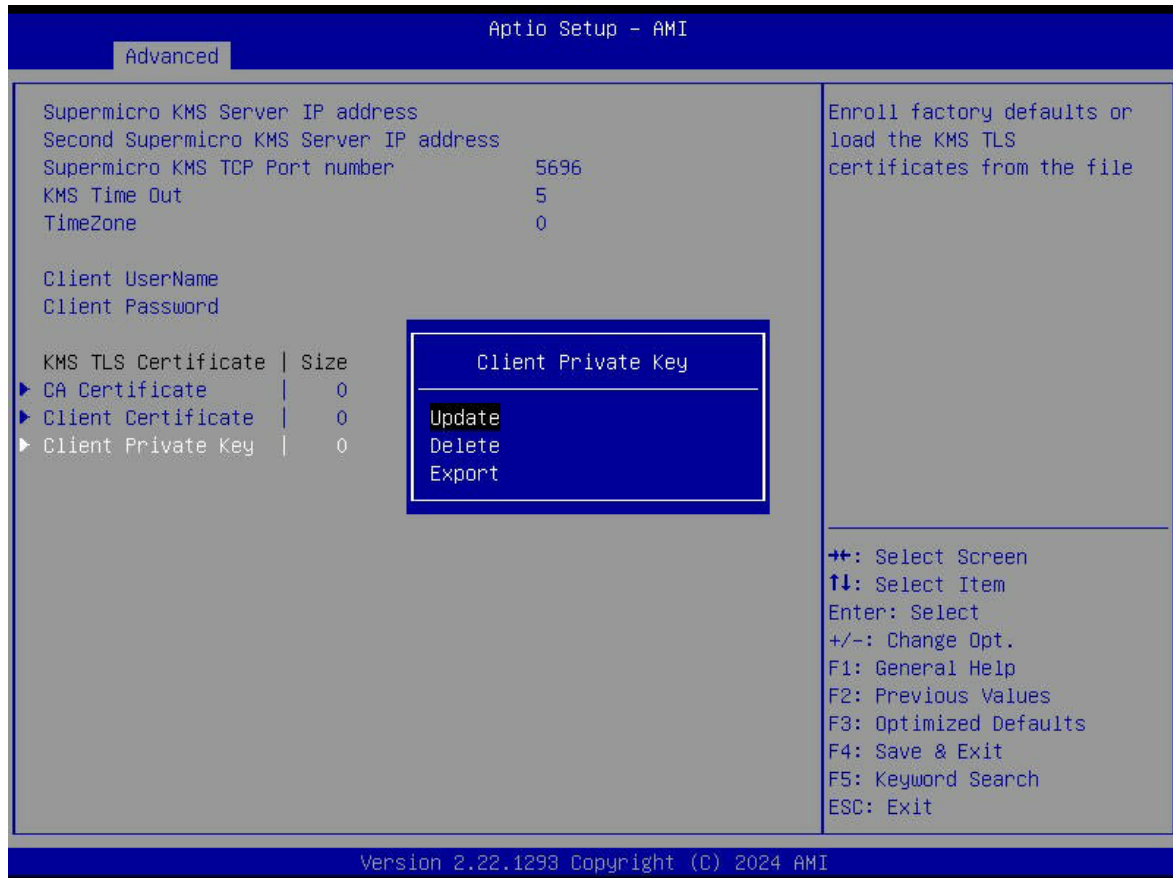
This setting provides options for managing the Certificate Authority (CA) certificate. The options are **Update**, Delete, and Export.

**▶ Client Certificate**

This setting provides options for managing the client certificate. The options are **Update**, Delete, and Export.

**▶ Client Private Key**

Use the three features to enroll factory defaults or load the KMS Transport Layer Security (TLS) certificates, which are generated by the KMS Server, from the file stored in the USB flash drive as shown below.



### Private Key Password (Available when "Client Private Key" above has been set)

Use this feature to change the password for the client private key.

## Super-Guardians Configuration Menu

### ▶ Super-Guardians Configuration

#### Super-Guardians Protection Policy

Use this feature to enable the Super-Guardians Protection Policy. The options are **Storage**, **System**, and **System and Storage**. Set this feature to **Storage** to protect and have secure access to Trusted Computing Group (TCG) NVMe devices with the Authentication-Key (AK). Set this feature to **System** to protect and have secure access to your system/motherboard with the AK. Set this feature to **System and Storage** to protect and have secure access to your system/motherboard/storage devices with the AK.

#### KMS Security Policy (Available when "TPM Security Policy" and "USB Security Policy" are set to Disabled)

Set this feature to **Enabled** to enable the KMS Security Policy. When this feature has not previously been set to **Enabled**, the options are **Disabled** and **Enabled**. Changes take effect after you save settings and reboot the system.

When this feature has previously been set to Enabled, the options are **Enabled**, Reset, and Key Rotation. Set this feature to Key Rotation to obtain an existing AK from the KMS server and create a new AK. To disable the KMS Security Policy, set this feature to Reset. When this feature is set to Reset, the system and TCG NVMe devices chosen in "Super-Guardians Protection Policy" will be in the unprotected mode.

**Notes:**

- Be sure that the KMS server is ready before configuring this feature.
- Use the professional KMS server solutions (e.g., Thales Server) or the Supermicro PyKMIP Software Package to establish the KMS server.

**KMS Server Retry Count (Available when "TPM Security Policy" and "USB Security Policy" are set to Disabled)**

Use this feature to specify how many times the system will attempt reconnecting to the KMS server. The valid range is 0–10. Press the <+> or <-> key on your keyboard to change the value. The default setting is 5. If the value is 0, the system will retry infinitely.

**TPM Security Policy (Available when "KMS Security Policy" and "USB Security Policy" are set to Disabled)**

Set this feature to Enabled to enable the TPM Security Policy. When this feature has not previously been set to Enabled, the options are **Disabled** and Enabled. Changes take effect after you save settings and reboot the system.

When this feature has previously been set to Enabled, the options are **Enabled** and Reset. To disable the TPM Security Policy, set this feature to Reset. When this feature is set to reset, the system and TCG NVMe devices chosen in "Super-Guardians Protection Policy" will be in the unprotected mode.

**Note:** Be sure to install a TPM 2.0 device to your system before configuring this feature.

**Load Authentication-Key (Available when "KMS Security Policy," "TPM Security Policy," and "USB Security Policy" are set to Disabled)**

The options are **Disabled** and Enabled. Set this feature to Enabled. Changes take effect after you save settings and reboot the system. While booting, the BIOS will automatically load the Authentication-Key (filename: TPMAuth.bin) from the USB flash drive. Afterwards, the default setting will be set to Disabled by the BIOS.

**Notes:**

- Be sure to connect a USB flash drive with the Authentication-Key (filename: TPMAuth.bin) to your system before the system reboot.
- Be sure to save the Authentication-Key (filename: TPMAuth.bin) to the USB flash drive and have a backup. Please load the Authentication-Key (filename: TPMAuth.bin) after installing a TPM device. Otherwise, the TPM function can not work properly.

**USB Security Policy (Available when "KMS Security Policy" and "TPM Security Policy" are set to Disabled)**

Use this feature to enable the USB Security Policy. The options are **Disabled** and Enabled. Set this feature to Enabled. Changes take effect after you save settings and reboot the system. Connect a USB flash drive to your system before the system reboot. While booting, the BIOS will automatically create the USB Authentication-Key (filename: USBAuth.bin) and save it to the USB flash drive.

When this feature has been previously set to Enabled, the options are **Enabled** and Reset. To disable the USB Security Policy, set this feature to Reset. When this feature is set to Reset, the system and TCG NVMe devices chosen in "Super-Guardians Protection Policy" will be in the unprotected mode.

**Note:** Be sure to connect a USB flash drive to your system before configuring this feature. Save the USB Authentication-Key (filename: USBAuth.bin) to the USB flash drive and keep a backup.

## System Diagnostics Configuration

### Launch System Diagnostics

Use this feature to run hardware tests that check the health of system components and help identify any issues. The options are **Disabled** and Launch Once.

## Supermicro Network Adapter Menu

### ► Firmware Image Menu

This menu displays detailed version information for system firmware components.

Family Firmware Version

Boot Code

MBA

EFI

NCSI

RDMA FW

## ► Device Configuration Menu

### Multi-Function Mode

This setting configures NIC Hardware Mode. Switching from multi-function to single function will result in the clearing of Virtual Function values in the extended partitions. Advanced NPar option is a feature preview only. The options are **SF** and NPAR 1.0.

### SR-IOV Support

This setting enables or disables Single Root I/O Virtualization support for the system's PCIe devices. The options are **Disabled** and Enabled.

### Number of MSI-X Vectors per VF

This feature sets how many MSI-X interrupt vectors are assigned to each Virtual Function (VF) to improve device performance in virtualized environments.

### Maximum Number of MSI-X Vectors

Use this option to configure maximum number of PF MSI-X Vectors (0-512 per controller). The default value is 512.

### Energy Efficient Ethernet

This feature enables the network interface to reduce power consumption during periods of low data activity by entering a low-power idle mode, as defined by the IEEE 802.3az standard. The options are **Disabled** and Enabled.

### Operational Link Speed

Use this setting to configure the default link speed for the selected port. The options are **AutoNeg**, 25Gbps, 50Gbps, 100Gbps, 50Gbps PAM4, 100Gbps PAM4, 100Gbps PAM4-112, 200Gbps PAM4, 200Gbps PAM4-112, and 400Gbps PAM4-112.

### Support RDMA

Use this setting to configure RDMA Support for this port. The options are Disabled and **Enabled**.

### DCB Protocol

Use this setting to enable or disable DCB Protocol. The options are **Disabled**, Enabled (IEEE only), CEE (only), and Both (IEEE preferred with fallback to CEE).

### LLDP nearest bridge

Use the setting to configure LLDP nearest bridge state. The options are **Disabled** and Enabled.

### Default EVB Mode

Use the setting to configure Default Edge Virtual Bridging mode. The options are **VEB**, VEPA, and None.

### Enable PME Capability

Use the setting to configure PME Capability support. The options are **Disabled** and Enabled.

### Flow Offload

This feature enables or disables the network adapter to accelerate packet processing by offloading specific traffic flows from the CPU to specialized hardware, improving network performance and reducing CPU usage. The options are **Disabled** and Enabled.

### Adapter Error Recovery

This setting enables or disabled the network adapter or device to automatically detect, isolate, and recover from hardware or firmware errors without manual intervention, helping to maintain normal operation and avoid system crashes or reboots. The options are **Disabled** and Enabled.

## ► MBA Configuration Menu

### Option ROM

This feature controls whether legacy boot protocols in the device's option ROM are enabled or disabled. The options are Disabled and **Enabled**.

### Legacy Boot Protocol

This feature allows the system to boot using traditional BIOS methods (non-UEFI) instead of UEFI, supporting older operating systems and devices. The options are **PXE** and NONE.

### Boot Strap Type

This feature selects the method to initiate the system boot process. The options are **Auto Detect**, BBS, Int 18h, and Int 19h.

### Pre-boot Wake On LAN

This feature allows the system to power on remotely via a network signal (Wake-on-LAN) before the operating system loads. The options are Disabled and **Enabled**.

### VLAN Mode

This feature allows configuration of Virtual LAN (VLAN) tagging and support for network adapters during system boot. The options are **Disabled** and Enabled.

### VLAN ID (1-4094)

This feature specifies the VLAN number (1–4094) used to tag and separate network traffic.

### Boot Retry Count

This feature sets how many times the system will attempt to boot from the selected device before stopping or reporting an errors. The options are **No Retry**, 1 Retry, 2 Retries, 3 Retries, 4 Retries, 5 Retries, 6 Retries, and Indefinite Retries.

### Blink LEDs

Use this feature to identify the physical network port by blinking the associated LED. The default setting is **0** (up to 15 seconds).

The following information is displayed.

- UEFI Driver
- Adapter PBA
- Device Name
- Chip Type
- PCI Device ID
- PCI Address
- Link Status
- MAC Address
- Virtual MAC Address

### Link Status

This option displays link status.

Physical Link Speed

Chip Type

PCI Device ID

Bus: Device: Function

### Permanent MAC Address

This feature displays the permanent MAC address used by the device.

### Virtual NUMA

Enable this feature to optimize the memory-access performance for VMware virtual machines. The options are **Disabled** and Enabled.

**Note:** This feature is NOT available when "Workload Profile" is set to Telco NFVI, Telco NFVI-FP, or Telco FlexRAN.

## Restore Defaults

This feature resets adapter to the original factory default values.

## TLS Authenticate Configuration Menu

### ▶ Server CA Configuration

This feature allows you to configure the client certificate that is to be used by the server.

#### ▶ Enroll Certification

This feature allows you to enroll the certificate in the system.

#### Certification GUID

Press <Enter> and input the certification Global Unique Identifier (GUID).

#### ▶ Commit Changes and Exit

Use this feature to save all changes and exit TLS settings.

#### ▶ Discard Changes and Exit

Use this feature to discard all changes and exit TLS settings.

#### ▶ Delete Certification

This feature is used to remove the selected TLS certificates that are no longer needed or valid.

### ▶ Client Certification Configuration

Use this feature to manage the TLS certificates used to authenticate remote clients connecting to your system. Add, view, or delete client certificates as needed.

## RAM Disk Configuration

### Disk Memory Type

This setting defines the type of memory to be allocated from the system's available memory pool to create a disk. The options are **Boot Service Data** and **Reserved**.

#### ▶ Create raw

Create a RAM disk from a selected file on a storage device.

**Size (Hex):**

Set the size of the RAM disk. The valid size should be multiples of the RAM disk block size.

### **Create & Exit**

Create a new RAM disk with the given starting and ending address.

### **Discard & Exit**

Discard changes and exit.

#### **► Create from file**

Create a RAM disk from a selected file on a storage device.

### **Created RAM disk list:**

View all currently created RAM disks, and select the desired RAM disk to be enabled or disabled.

### **Remove selected RAM disk(s)**

Delete the selected RAM disk(s) from the list.

## **Driver Health Menu**

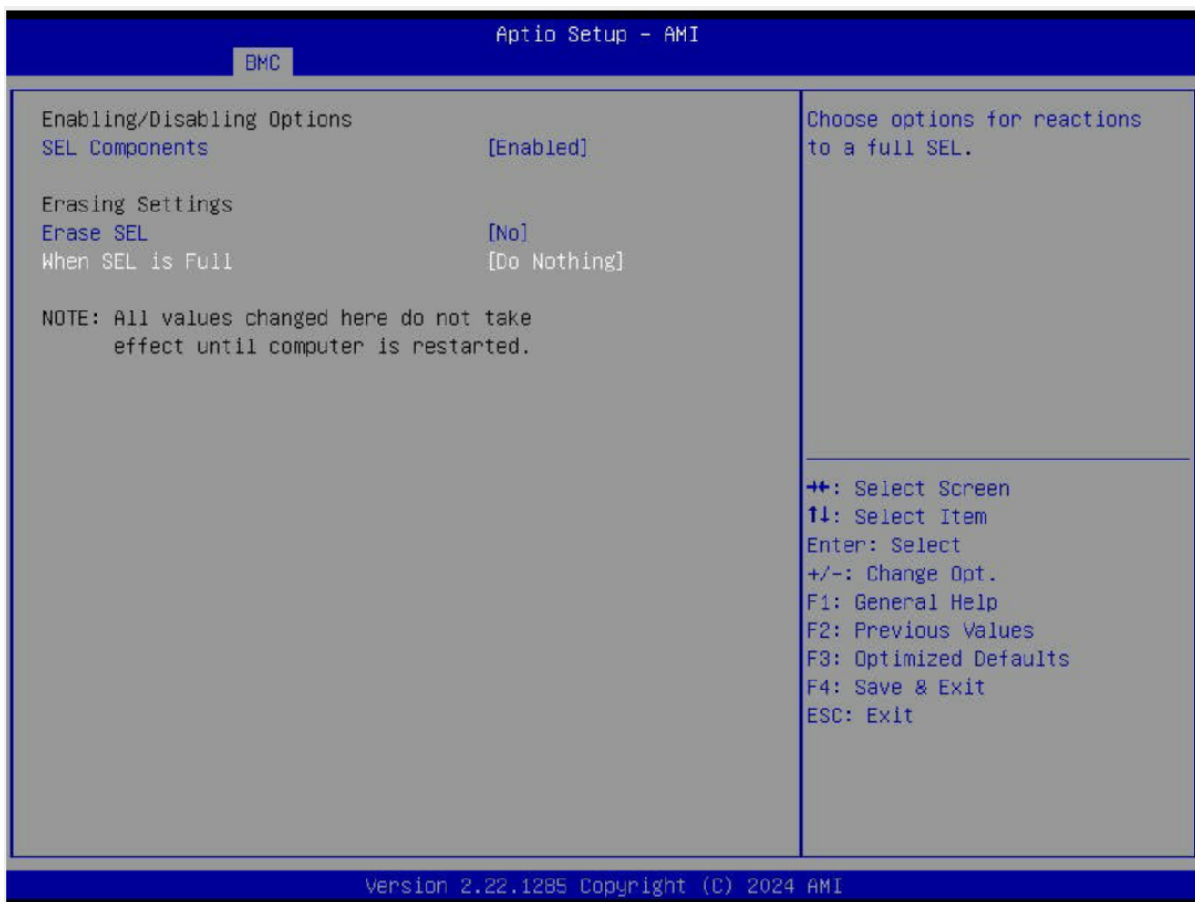
### **► Driver Health**

This feature displays the health information of the drivers installed in your system, including LAN controllers, as detected by the BIOS. Select one and press <Enter> to see the details.

**Note:** This section is provided for reference only, for the driver health status will differ depending on the drivers installed in your system. It's also based on your system configuration and the environment that your system is operating in.

## 4.4 BMC

Use this menu to configure Baseboard Management Console (BMC) settings.



**Figure 4-3. BMC Tab Screen**

### BMC Firmware Revision

This feature indicates the BMC firmware revision used in this system.

### BMC STATUS

This feature indicates the status of the BMC firmware installed in this system.

## System Event Log Menu

### ► System Event Log

**Note:** All values changed in this submenu do not take effect until computer is restarted.

## SEL Components

Select Enabled to enable all system event logging upon system boot. The options are Disabled and **Enabled**.

## Erasing Settings

### Erase SEL (Available when "SEL Components" is set to Enabled)

Select (Yes, On next reset) to erase all system event logs upon next system boot. Select (Yes, On every reset) to erase all system event logs upon each system reboot. Select No to keep all system event logs after each system reboot. The options are **No**, (Yes, On next reset), and (Yes, On every reset).

### When SEL is Full (Available when "SEL Components" is set to Enabled)

This feature defines what the BIOS should do when the system event log is full. Select Erase Immediately to erase all events in the log when the system event log is full. The options are **Do Nothing** and Erase Immediately.

## BMC Network Configuration Menu

### ► BMC Network Configuration

#### Update BMC LAN Configuration

Select Yes for the BIOS to implement all IP/MAC address changes upon next system boot. The options are **No** and Yes.

\*\*\*\*\*

#### Configure IPv4 Support

\*\*\*\*\*

#### BMC LAN Selection

This feature displays the type of the BMC LAN.

#### BMC Network Link Status:

This feature displays the status of the BMC network link for this system.

#### Configuration Address Source (Available when "Update BMC LAN Configuration" is set to Yes)

Use this feature to select the source of the IPv4 connection. If Static is selected, note the IP address of the IPv4 connection and enter it to the system manually in the field. If DHCP is selected, the BIOS will search for a Dynamic Host Configuration Protocol (DHCP) server in the network that is attached to and request the next available IP address for this computer. The options are Static and **DHCP**.

**Station IP Address**

This feature displays the Station IP address in decimal and in dotted quad form (i.e., 172.29.176.131). It is available for configuration when "Configuration Address Source" above is set to Static.

**Subnet Mask**

This feature displays the sub-network that this computer belongs to. It is available for configuration when "Configuration Address Source" above is set to Static.

**Station MAC Address**

This feature displays the Station MAC address for this computer. Mac addresses are six two-digit hexadecimal numbers.

**Gateway IP Address**

This feature displays the Gateway IP address for this computer. This should be in decimal and in dotted quad form (i.e., 172.29.0.1). It is available for configuration when "Configuration Address Source" above is set to Static.

\*\*\*\*\*

**Configure IPv6 Support**

\*\*\*\*\*

**IPv6 Address Status**

This feature displays the status of the IPv6 address.

**IPv6 Support (Available when "Update BMC LAN Configuration" is set to Yes)**

Use this feature to enable IPv6 support. The options are **Enabled** and Disabled.

**Configuration Address Source (Available when "IPv6 Support" is set to Enabled)**

Use this feature to select the source of the IPv6 connection. If Static Configuration is selected, note the IP address of IPv6 connection and enter it to the system manually in the field. If the other two options are selected, the BIOS will search for a DHCP server in the network that is attached to and request the next available IP address for this computer. The options are Static Configuration, **DHCPv6 Stateless**, and DHCPv6 Stateful.

**IPv6 Address ("Static," "DHCPv6 Stateless," or "DHCPv6 Stateful," depending on the option you selected for "Configuration Address Source" above)**

This feature displays the station IPv6 address.

**Prefix Length**

This feature displays the prefix length. It is available for configuration when "Configuration Address Source" above is set to Static Configuration.

**Gateway IP**

This feature displays the IPv6 gateway IP address. It is available for configuration when "Configuration Address Source" above is set to Static Configuration.

**Advanced Settings (Available when "Configuration Address Source" is set to DHCPv6 Stateless)**

Use this feature to set the DNS server IP. The default setting allows this system to obtain the DNS server IP automatically. The options are **Auto obtain DNS server IP** and Manually obtain DNS server IP.

**Preferred DNS server IP (Available when "Advanced Settings" above is set to Manually obtain DNS server IP)**

This feature displays the preferred DNS server IP. It can be configured via Redfish.

**Alternative DNS server IP (Available when "Advanced Settings" above is set to Manually obtain DNS server IP)**

This feature displays the alternative DNS server IP. It can be configured via Redfish.

\*\*\*\*\*

**Configure VLAN Support**

\*\*\*\*\*

**VLAN Support (Available when "Update BMC LAN Configuration" is set to Yes)**

Use this feature to enable the virtual LAN (VLAN) support. The options are Enabled and Disabled.

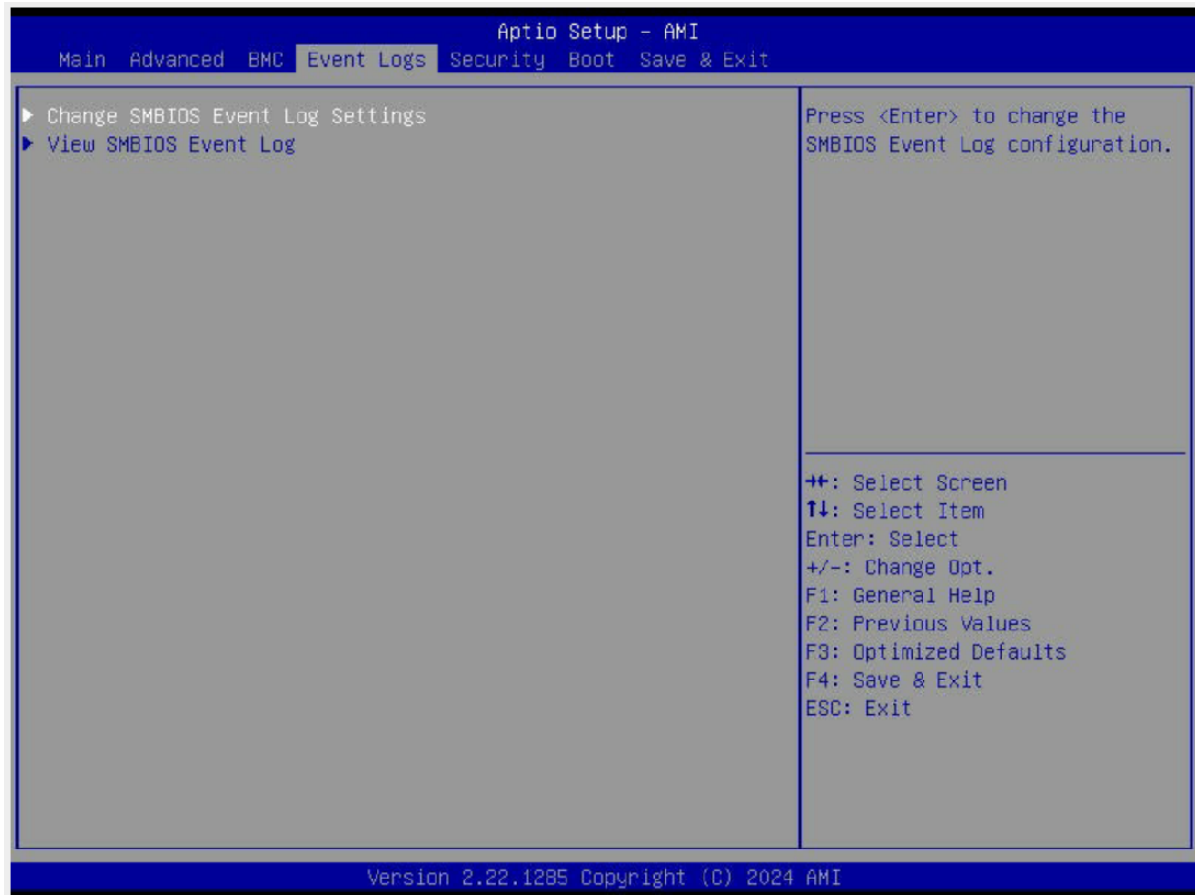
**VLAN ID (Available when "VLAN Support" is set to Enabled)**

Use this feature to create a new VLAN ID. The valid range is 1–4094. The default setting is 1.

## 4.5 Event Logs

Use this menu to configure Event Logs settings.

**Note:** After you've made any changes in this section, please be sure to reboot the system for the changes to take effect.



**Figure 4-4. Event Logs Tab Screen**

### ▶ Change SMBIOS Event Log Settings

**Note:** Reboot the system for the changes in this section to take effect.

#### Enabling/Disabling Options

##### SMBIOS Event Log

Select Enabled to enable System Management BIOS (SMBIOS) Event Logging during system boot. The options are Disabled and **Enabled**.

## Erasing Settings

### Erase Event Log (Available when "SMBIOS Event Log" is set to Enabled)

Select No to keep the event log without erasing it upon next system bootup. Select (Yes, Next reset) to erase the event log upon next system reboot. The options are **No**, (Yes, Next reset), and (Yes, Every reset).

### When Log is Full (Available when "SMBIOS Event Log" is set to Enabled)

Select Erase Immediately to immediately erase all errors in the SMBIOS event log when the event log is full. Select Do Nothing for the system to do nothing when the SMBIOS event log is full. The options are **Do Nothing** and Erase Immediately.

## SMBIOS Event Log Standard Settings

### Log System Boot Event (Available when "SMBIOS Event Log" is set to Enabled)

Select Enabled to log system boot events. The options are Enabled and **Disabled**.

### MECI (Available when "SMBIOS Event Log" is set to Enabled)

Enter the increment value for the multiple event counter. Enter a number between 1 and 255. The default setting is **1**. (MECI is the abbreviation for Multiple Event Count Increment.)

### METW (Available when "SMBIOS Event Log" is set to Enabled)

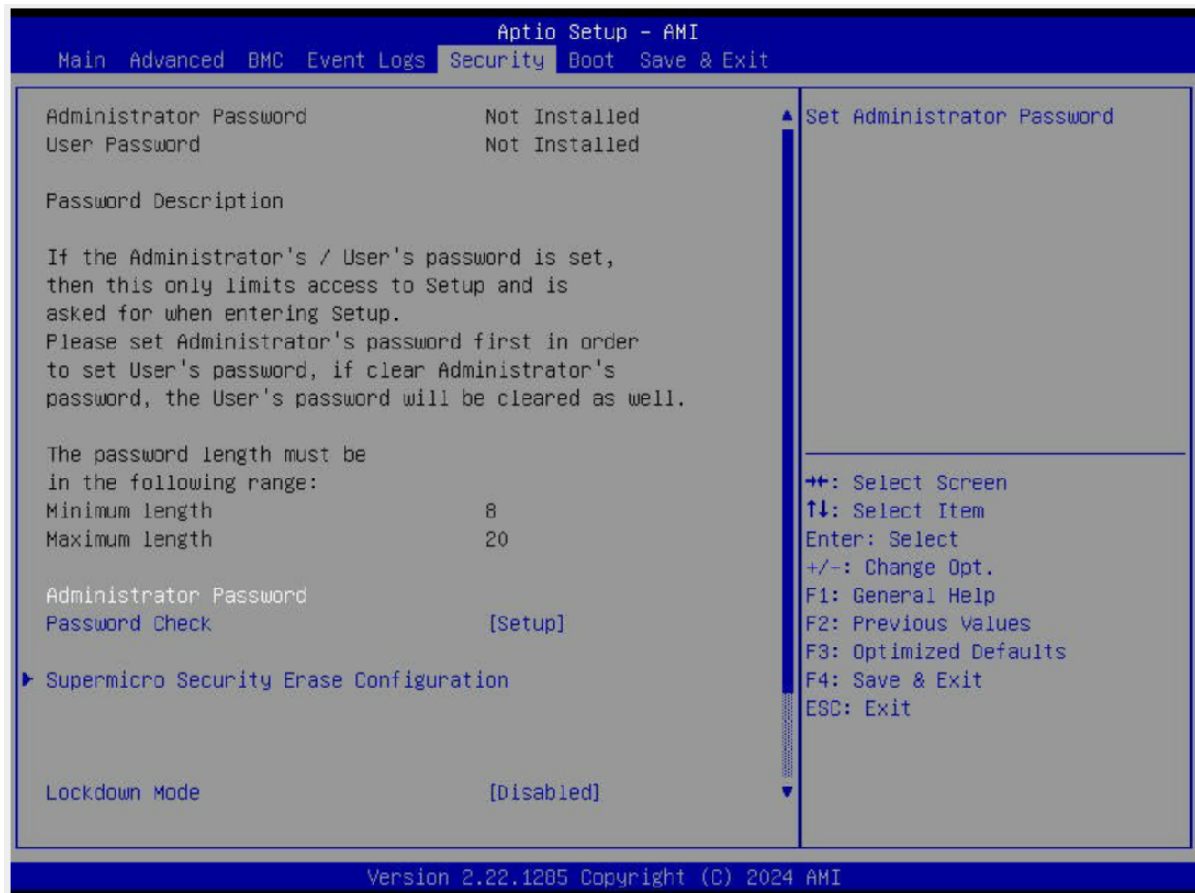
Use this feature to determine how long (in minutes) should the multiple event counter wait before generating a new event log. Enter a number between 0 and 99. The default value is **60**. (METW is the abbreviation for Multiple Event Count Time Window.)

### ► View SMBIOS Event Log

Use this feature to view the event in the system event log. Select this feature and press <Enter> to view the status of an event in the log. The following information is displayed: DATE / TIME / ERROR CODE / SEVERITY.

## 4.6 Security

This menu allows you to configure the following security settings for the system.



**Figure 4-5. Security Tab Screen**

### **Disable Block Sid and Freeze Lock (Available when your storage devices support TCG)**

Select Enabled to allow SID authentication to be performed in TCG storage devices. The options are **Disabled** and Enabled.

The following information is displayed:

- Administrator Password
- User Password
- Password Description

### **Administrator Password**

This feature indicates if an administrator password has been installed. Use this feature to set the administrator password, which is required to enter the BIOS Setup utility. The length of the password can be between three and 20 characters long.

**User Password (Available when "Administrator Password" has been set)**

This feature indicates if a user password has been installed. Use this feature to set the user password which is required to enter the BIOS Setup utility. The length of the password can be between three and 20 characters long.

**Password Check**

Select Setup for the system to check for a password upon entering the BIOS Setup utility. Select Always for the system to check for the passwords needed at bootup and upon entering the BIOS Setup utility. The options are **Setup** and Always.

**Hard Drive Security Frozen**

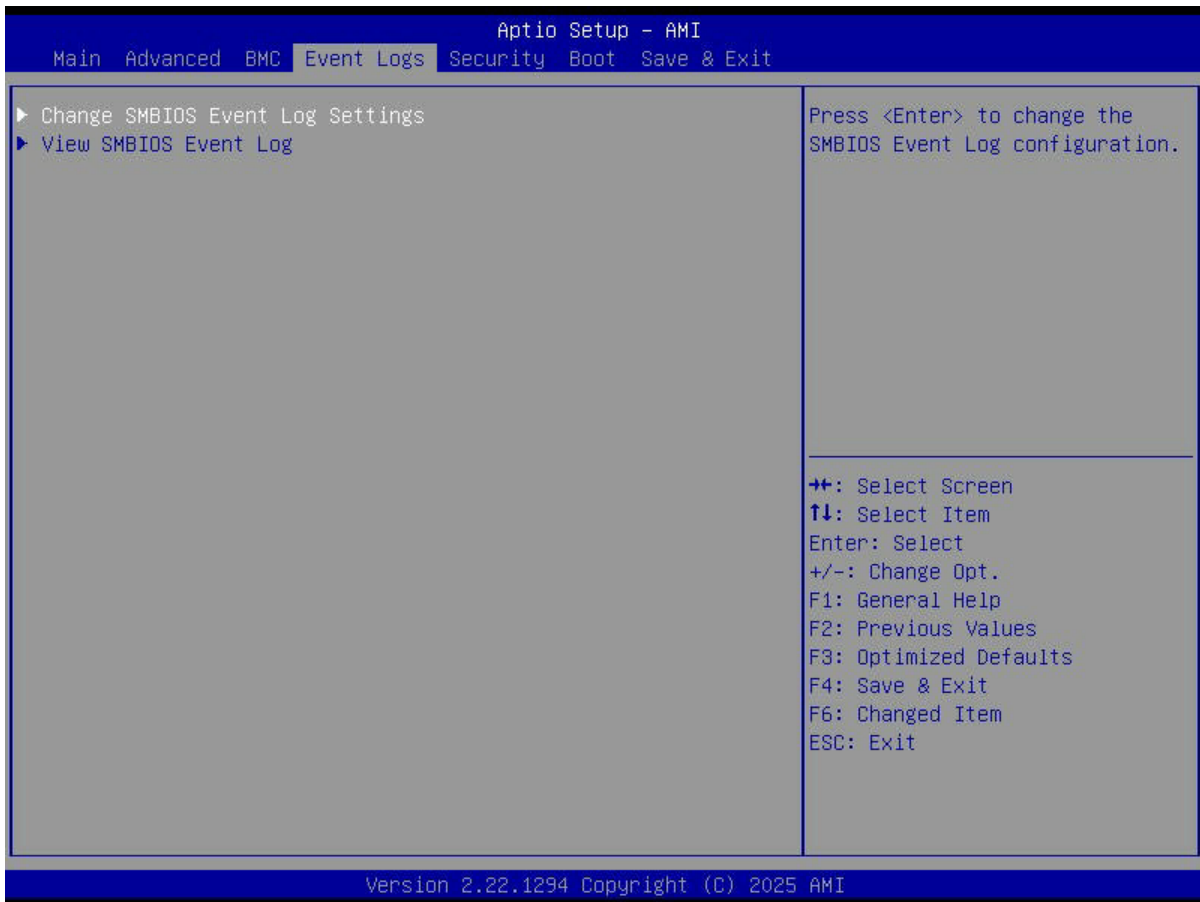
Select Enabled to freeze the Lock Security feature for HDD to protect key data in hard drives from being altered. The options are **Disabled** and Enabled.

**Lockdown Mode (Available when the DCMS key is activated)**

Select Enabled to support the Lockdown Mode, which prevents the existing data or keys stored in the system from being altered or changed in an effort to preserve system integrity and security. The options are **Disabled** and Enabled.

## 4.7 Boot

Use this menu to configure Boot settings.



**Figure 4-6. Boot Tab Screen**

### Boot Configuration

#### Boot Mode Select

Use this feature to choose the system boot mode. The options are Legacy, **UEFI**, and Dual.

#### Legacy to EFI Support

Use this feature to enable system to boot to EFI OS after boot failed from legacy boot order. The options are **Disabled** and Enabled.

#### FIXED BOOT ORDER Priorities

Use this feature to prioritize the order of a bootable device from which the system will boot. Press <Enter> on each item sequentially to select the device.

- Boot Option #1 – Boot Option #9

### ► Add New Boot Option

Use this feature to add a new boot option to the boot priority features for system boot.

**Note:** This submenu is available when any storage device is detected by the BIOS.

#### **Add boot option**

Use this feature to specify the name for the new boot option.

#### **Path for boot option**

Use this feature to enter the path for the new boot option in the format fsx:\path\filename.efi.

#### **Boot option File Path**

Use this feature to specify the file path for the new boot option.

#### **Create**

After setting the name and the file path for the boot option, press <Enter> to create the new boot option in the boot priority list.

### ► Delete Boot Option

Use this feature to select a boot device to delete from the boot priority list.

#### **Delete Boot Option**

Use this feature to remove an EFI boot option from the boot priority list.

### ► UEFI USB Key Drive BBS Priorities

Use this feature to set the system boot order of detected devices.

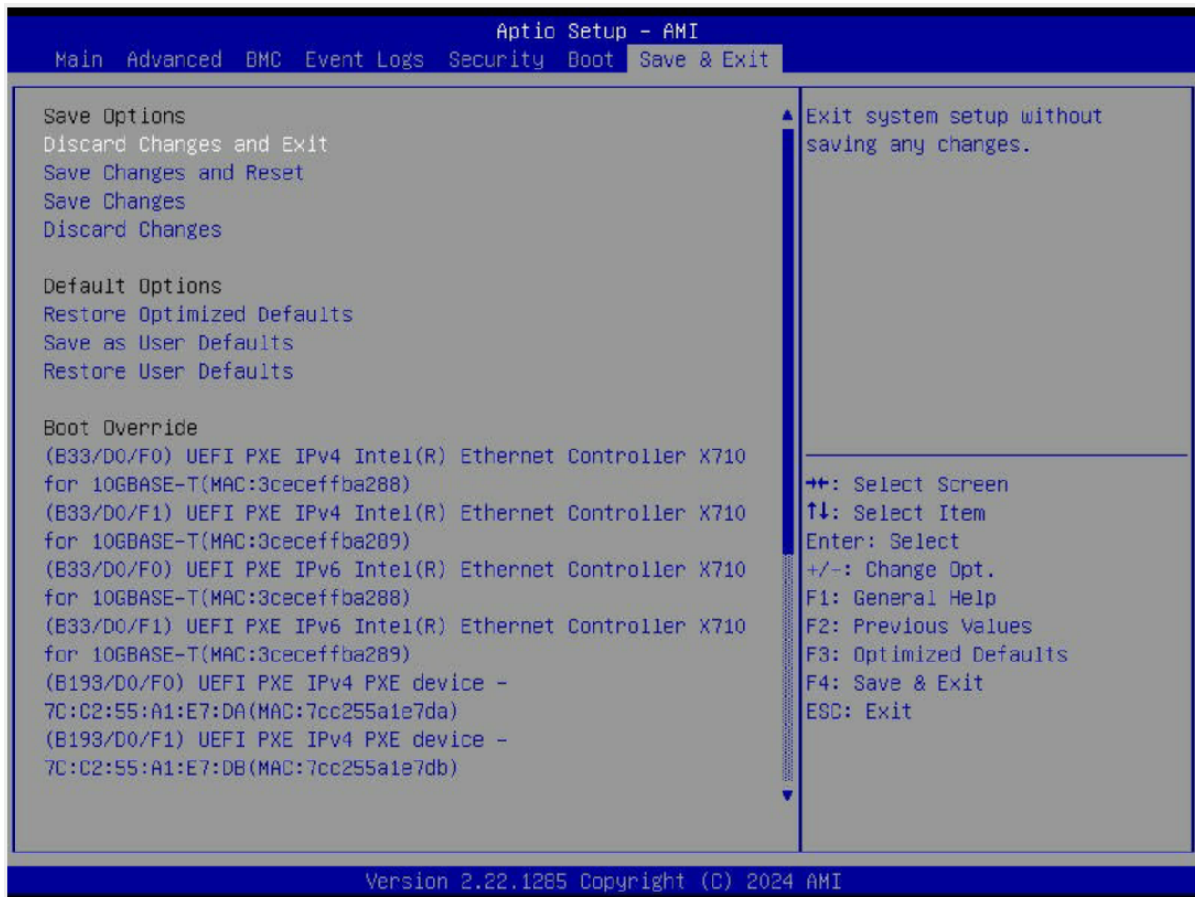
### ► UEFI NETWORK Drive BBS Priorities

Use this feature to set the system boot order of detected devices.

### ► UEFI Application Boot Priorities

Use this feature to set the system boot order of detected devices.

## 4.8 Save & Exit



**Figure 4-7. Save & Exit Tab**

### Save Options

#### Discard Changes and Exit

Use this feature to exit from the BIOS Setup utility without making any permanent changes to the system configuration and reboot the computer.

#### Save Changes and Reset

On completing the system configuration changes, use this feature to exit the BIOS Setup utility and reboot the computer for the new system configuration parameters to take effect.

#### Save Changes

On completing the system configuration changes, use this feature to save all changes made. This will not reset (reboot) the system.

**Discard Changes**

Select this feature and press <Enter> to discard all changes made and return to the BIOS Setup utility.

**Default Options****Restore Optimized Defaults**

Select this feature and press <Enter> to load manufacturer optimized default settings, which are intended for maximum system performance but not for maximum stability.

**Note:** After pressing <Enter>, reboot the system for the changes to take effect, which ensures that this system has the optimized default settings.

**Save as User Defaults**

Select this feature and press <Enter> to save all changes as the default values specified to the BIOS Setup utility for future use.

**Restore User Defaults**

Select this feature and press <Enter> to retrieve user-defined default settings that have been saved previously.

**Boot Override**

**Note:** Use this section to override the Boot priorities sequence in the Boot menu, and immediately boot the system with a device specified here instead of the one specified in the boot list. This is a one-time boot override.

# Appendix A:

## BIOS Codes

For information about BIOS codes for the H14SSL-N/NT motherboard, refer to the following content.

### Additional BIOS POST Codes

The AMI BIOS supplies additional checkpoint codes, which are documented online at <https://www.supermicro.com/support/manuals> ("AMI BIOS POST Codes User's Guide").

For information on AMI updates, refer to <https://www.ami.com/products>.

# Appendix B:

## Software

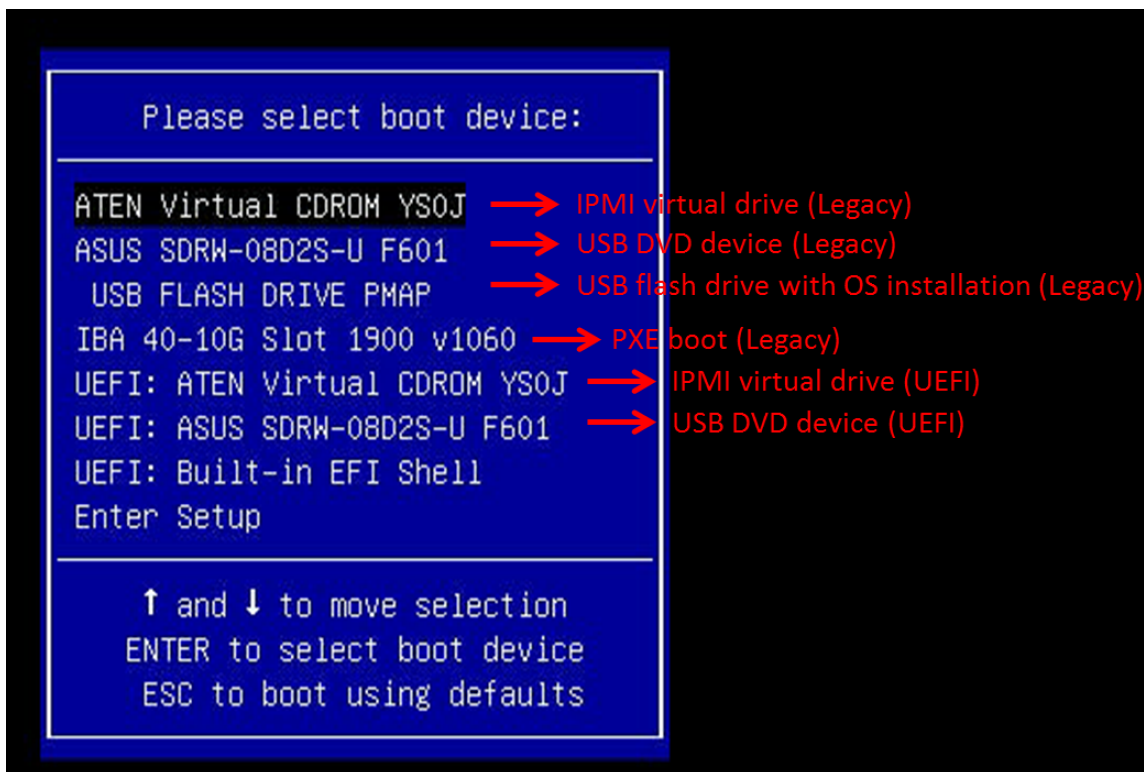
After the H14SSL-N/NT motherboard has been installed, you can install the Operating System (OS), configure RAID settings, and install the drivers.

### Microsoft Windows OS Installation

If you will be using RAID, you must configure RAID settings before installing the Windows OS and the RAID driver. Refer to the RAID Configuration User Guides posted on our website at <https://www.supermicro.com/support/manuals>.

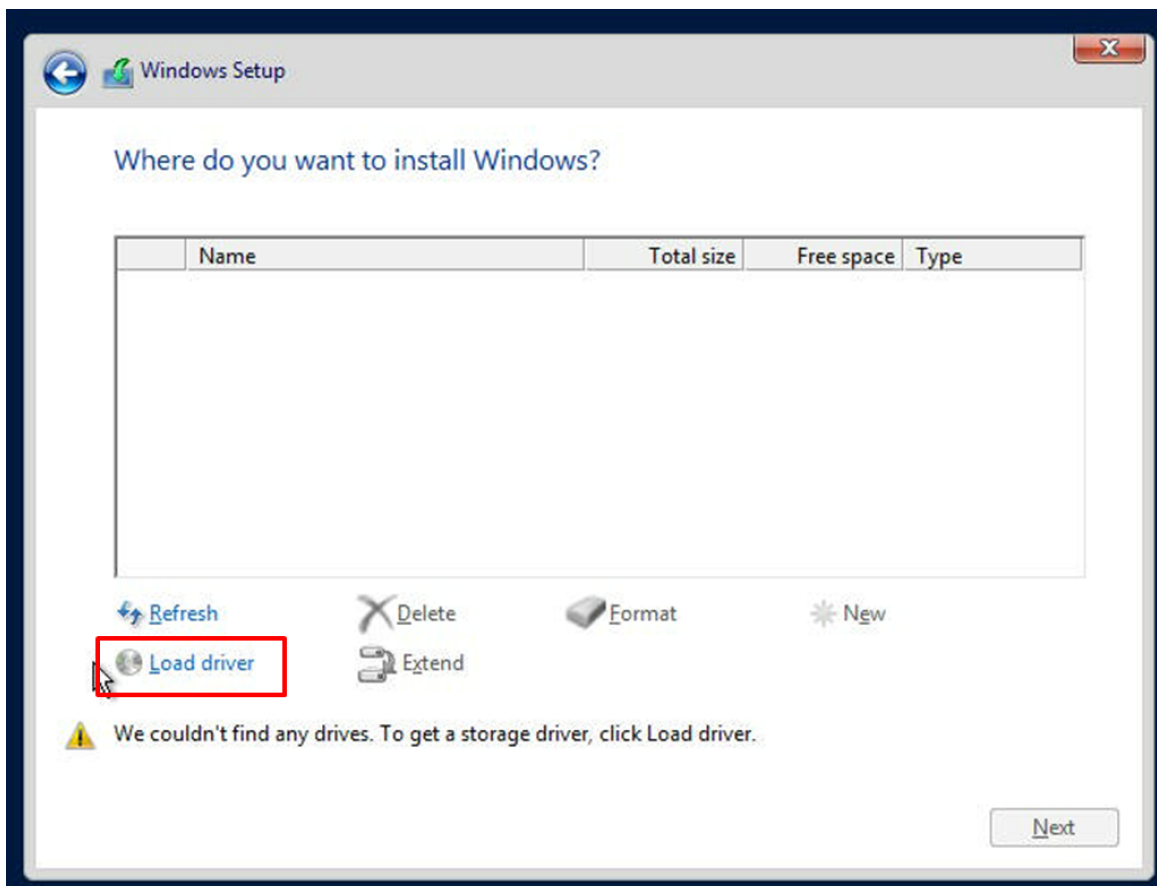
#### Installing the OS

1. Create a method to access the Microsoft Windows installation ISO file. That can be a USB flash or media drive, or the BMC KVM console.
2. Retrieve the proper drivers. Go to the Supermicro web page for your motherboard and click on "Download the Latest Drivers and Utilities," select the proper driver, and copy it to a USB flash drive.
3. Boot from a bootable device with Windows OS installation. You can see a bootable device list by pressing <F11> during the system bootup.



**Figure B-1. Selecting the Boot Device**

4. During Windows Setup, continue to the dialog box where you select the drives on which to install Windows. If the disk you want to use is not listed, click on the “Load driver” link at the bottom left corner.



**Figure B-2. Loading the Driver Link**

To load the driver, browse the USB flash drive for the proper driver files.

5. Once all devices are specified, continue with the installation.
6. After the Windows OS installation has completed, the system will automatically reboot multiple times for system updates.

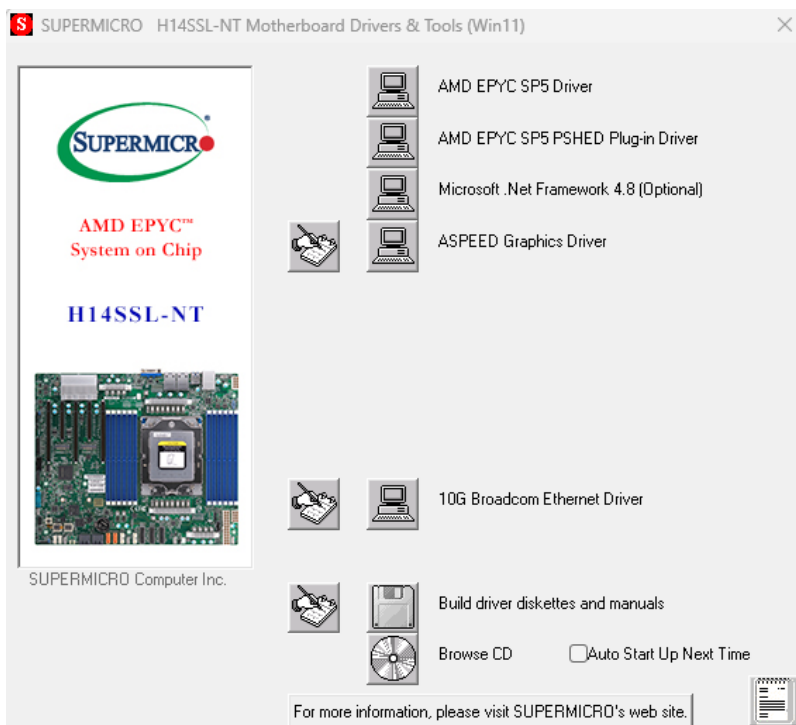
## Driver Installation

The Supermicro website contains drivers and utilities for your system at the following page:

<https://www.supermicro.com/wdl>.

Some of these drivers and utilities must be installed, such as the chipset driver. After accessing the website, go into the CDR\_Images (in the parent directory of the above link) and locate the ISO file for your motherboard. Download this file to a USB flash or media drive. You may also use a utility to extract the ISO file if preferred.

Another option is to go to the Supermicro website at <https://www.supermicro.com>. Find the product page for your motherboard and download the latest drivers and utilities. Insert the flash drive or disk, and the screenshot shown below should appear.



**Figure B-3. Driver & Tools Installation Screen**

**Note:** Click the icons showing a hand writing on paper to view the readme files for each item. Click the computer icons to the right of these items to install each item (from top to bottom) one at a time. After installing each item, you must reboot the system before moving on to the next item on the list. The bottom icon with a CD on it allows you to view the entire contents.

## BMC

The H14SSL-N/NT motherboard provides remote access, monitoring, and management through the baseboard management controller (BMC) and other management controllers distributed among different system modules. There are several BIOS settings that are related to BMC. For general documentation and information on BMC, visit our website at the following page:

<https://www.supermicro.com/en/solutions/management-software/bmc-resources>

### BMC ADMIN User Password

For security, each system is assigned a unique default BMC password for the ADMIN user. The password can be found on a sticker on the motherboard and a sticker on the chassis, for Supermicro chassis. The sticker also displays the BMC MAC address. If necessary, the password can be reset using the Supermicro IPMICFG tool.



**Figure B-4. BMC Password Label**

## Appendix C:

# Standardized Warning Statements

The following statements are industry standard warnings, provided to warn the user of situations which have the potential for bodily injury. Should you have questions or experience difficulty, contact Supermicro's Technical Support department for assistance. Only certified technicians should attempt to install or configure components.

Read this section in its entirety before installing or configuring components in the Supermicro H14SSL-N/NT motherboard.

These warnings may also be found on our website at the following page:

[https://www.supermicro.com/about/policies/safety\\_information.cfm](https://www.supermicro.com/about/policies/safety_information.cfm)

## Battery Handling



**CAUTION** There is risk of explosion if the battery is replaced by an incorrect type. Replace the battery only with the same or equivalent type recommended by the manufacturer. Dispose of used batteries according to the manufacturer's instructions.

警告!

バッテリーを間違ったタイプに交換すると爆発の危険があります。交換する電池はメーカーが推奨する型、または同等のものを使用下さい。使用済電池は製造元の指示に従って処分して下さい。

警告!

如果更换的电池类型不正确。请只使用同类电池或制造商推荐的功能相当的电池更换原有电池。请按制造商的说明处理废旧电池。

警告!

如果更換的電池類型不正確。請使用製造商建議之相同或功能相當的電池更換原有電池。請按照製造商的說明指示處理廢棄舊電池。

**WARNUNG!**

Es besteht Explosionsgefahr, wenn die Batterie durch einen falschen Typ ersetzt wird. Ersetzen Sie die Batterie nur durch den gleichen oder vom Hersteller empfohlenen Batterietyp. Entsorgen Sie die benutzten Batterien nach den Anweisungen des Herstellers.

**¡ADVERTENCIA!**

Existe riesgo de explosión si la batería se reemplaza por un tipo incorrecto. Reemplazar la batería exclusivamente con el mismo tipo o el equivalente recomendado por el fabricante. Desechar las baterías gastadas según las instrucciones del fabricante.

**ATTENTION!**

Il existe un risque d'explosion si la batterie est remplacée par un type incorrect. Ne la remplacer que par une pile de type semblable ou équivalent, recommandée par le fabricant. Jeter les piles usagées conformément aux instructions du fabricant.

**אזהרה!**

קיימת סכנת פיצוץ אם הסוללה תוחלף בסוג שגוי. יש להחליף את הסוללה בסוג התואם מחברת יצרן מומלצת. סילוק הסוללות המשומשות יש לבצע לפי הוראות היצרן.

**تحذير!**

هناك خطر الانفجار إذا تم استبدال البطارية بنوع غير صحيح  
اسحبذال البطارية  
فقط بنفس النوع أو ما يعادلها مما أوصت به الشركة المصنعة  
جخلص من البطاريات المسحمة وفقاً لتعليمات الشركة الصانعة

**경고!**

배터리를 잘못된 종류로 교체하면 폭발의 위험이 있습니다. 기존 배터리와 동일하거나 제조사에서 권장하는 동등한 종류의 배터리로만 교체해야 합니다. 제조사의 안내에 따라 사용된 배터리를 처리하여 주십시오.

**WAARSCHUWING!**

Er bestaat explosiegevaar als de batterij wordt vervangen door een verkeerd type. Vervang de batterij slechts met hetzelfde of een equivalent type die door de fabrikant aanbevolen wordt. Gebruikte batterijen dienen overeenkomstig fabrieksvoorschriften afgevoerd te worden.

**Product Disposal**

**Warning!** Ultimate disposal of this product should be handled according to all national laws and regulations.

**警告!**

この製品を廃棄処分する場合、国の関係する全ての法律・条例に従い処理する必要があります。

**警告!**

本产品的废弃处理应根据所有国家的法律和规章进行。

**警告!**

本產品的廢棄處理應根據所有國家的法律和規章進行。

**Warnung!**

Die Entsorgung dieses Produkts sollte gemäß allen Bestimmungen und Gesetzen des Landes erfolgen.

**¡Advertencia!**

Al deshacerse por completo de este producto debe seguir todas las leyes y reglamentos nacionales.

**Attention!**

La mise au rebut ou le recyclage de ce produit sont généralement soumis à des lois et/ou directives de respect de l'environnement. Renseignez-vous auprès de l'organisme compétent.

אזהרה!

סילוק סופי של מוצר זה חייב להיות בהתאם להנחיות וחוקי המדינה.

تحذير!

عند التخلص النهائي من هذا المنتج ينبغي التعامل معه وفقا لجميع القوانين والأنظمة الوطنية

경고!

이 제품은 해당 국가의 관련 법규 및 규정에 따라 폐기되어야 합니다.

Waarschuwing!

De uiteindelijke verwijdering van dit product dient te geschieden in overeenstemming met alle nationale wetten en reglementen.