



AOC-IBH-X4ES



User's Guide

Revision 1.0

The information in this User's Guide has been carefully reviewed and is believed to be accurate. The vendor assumes no responsibility for any inaccuracies that may be contained in this document, and makes no commitment to update or to keep current the information in this user's guide, or to notify any person or organization of the updates. **Please Note: For the most up-to-date version of this user's guide, please see our Website at www.supermicro.com.**

Super Micro Computer, Inc. ("Supermicro") reserves the right to make changes to the product described in this user's guide at any time and without notice. This product, including software and documentation, is the property of Supermicro and/or its licensors, and is supplied only under a license. Any use or reproduction of this product is not allowed, except as expressly permitted by the terms of said license.

IN NO EVENT WILL SUPER MICRO COMPUTER, INC. BE LIABLE FOR DIRECT, INDIRECT, SPECIAL, INCIDENTAL, SPECULATIVE OR CONSEQUENTIAL DAMAGES ARISING FROM THE USE OR INABILITY TO USE THIS PRODUCT OR DOCUMENTATION, EVEN IF ADVISED OF THE POSSIBILITY OF SUCH DAMAGES. IN PARTICULAR, SUPER MICRO COMPUTER, INC. SHALL NOT HAVE LIABILITY FOR ANY HARDWARE, SOFTWARE, OR DATA STORED OR USED WITH THE PRODUCT, INCLUDING THE COSTS OF REPAIRING, REPLACING, INTEGRATING, INSTALLING OR RECOVERING SUCH HARDWARE, SOFTWARE, OR DATA.

Any disputes arising between the manufacturer and the customer shall be governed by the laws of Santa Clara County in the State of California, USA. The State of California, County of Santa Clara shall be the exclusive venue for the resolution of any such disputes. Supermicro's total liability for all claims will not exceed the price paid for the hardware product.

FCC Statement: This equipment has been tested and found to comply with the limits for a Class A digital device pursuant to Part 15 of the FCC Rules. These limits are designed to provide reasonable protection against harmful interference when the equipment is operated in industrial environment. This equipment generates, uses, and can radiate radio frequency energy and, if not installed and used in accordance with the manufacturer's instruction manual, may cause harmful interference with radio communications. Operation of this equipment in a residential area is likely to cause harmful interference, in which case you will be required to correct the interference at your own expense.

California Best Management Practices Regulations for Perchlorate Materials: This Perchlorate warning applies only to products containing CR (Manganese Dioxide) Lithium coin cells. "Perchlorate Material-special handling may apply. See www.dtsc.ca.gov/hazardouswaste/perchlorate".



WARNING: This product can expose you to chemicals including lead, known to the State of California to cause cancer and birth defects or other reproductive harm. For more information, go to www.P65Warnings.ca.gov.

The products sold by Supermicro are not intended for and will not be used in life support systems, medical equipment, nuclear facilities or systems, aircraft, aircraft devices, aircraft/emergency communication devices or other critical systems whose failure to perform be reasonably expected to result in significant injury or loss of life or catastrophic property damage. Accordingly, Supermicro disclaims any and all liability, and should buyer use or sell such products for use in such ultra-hazardous applications, it does so entirely at its own risk. Furthermore, buyer agrees to fully indemnify, defend and hold Supermicro harmless for and against any and all claims, demands, actions, litigation, and proceedings of any kind arising out of or related to such ultra-hazardous use or sale.

User's Guide Revision 1.0

Release Date: July 30, 2020

Unless you request and receive written permission from Super Micro Computer, Inc., you may not copy any part of this document.

Information in this document is subject to change without notice. Other products and companies referred to herein are trademarks or registered trademarks of their respective companies or mark holders.

Copyright © 2020 by Super Micro Computer, Inc.
All rights reserved.

Printed in the United States of America

Preface

About this User's Guide

This user's guide is written for system integrators, PC technicians, and knowledgeable PC users. It provides information for the installation and use of the AOC-IBH-X4ES add-on card.

About this Add-on Card

This product is sold only as part of an integrated solution with Supermicro server systems.

An Important Note to the User

All images and layouts shown in this user's guide are based upon the latest PCB revision available at the time of publishing. The card you have received may or may not look exactly the same as the graphics shown in this user's guide.

Returning Merchandise for Service

A receipt or copy of your invoice marked with the date of purchase is required before any warranty service will be rendered. You can obtain service by calling your vendor for a Returned Merchandise Authorization (RMA) number. When returning the add-on-card to the manufacturer, the RMA number should be prominently displayed on the outside of the shipping carton, and the shipping package is mailed prepaid or hand-carried. Shipping and handling charges will be applied for all orders that must be mailed when service is complete. For faster service, You can also request a RMA authorization online (<http://www.supermicro.com>).

This warranty only covers normal consumer use and does not cover damages incurred in shipping or from failure due to the alternation, misuse, abuse, or improper maintenance of products.

During the warranty period, contact your distributor first for any product problems.

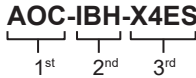
Conventions Used in the User's Guide

Pay special attention to the following symbols for proper system installation and to prevent damage to the system or injury to yourself:



Note: Additional information given to differentiate between various models or provides information for correct system setup.

Naming Convention



Contacting Supermicro Headquarters

Address: Super Micro Computer, Inc.
980 Rock Ave.
San Jose, CA 95131 U.S.A.

Tel: +1 (408) 503-8000

Fax: +1 (408) 503-8008

Email: marketing@supermicro.com (General Information)
support@supermicro.com (Technical Support)

Website: www.supermicro.com

Europe

Address: Super Micro Computer B.V.
Het Sterrenbeeld 28, 5215 ML
's-Hertogenbosch, The Netherlands

Tel: +31 (0) 73-6400390

Fax: +31 (0) 73-6416525

Email: sales@supermicro.nl (General Information)
support@supermicro.nl (Technical Support)
rma@supermicro.nl (Customer Support)

Website: www.supermicro.com

Asia-Pacific

Address: Super Micro Computer, Inc.
3F, No. 150, Jian 1st Rd.
Zhonghe Dist., New Taipei City 235
Taiwan (R.O.C)

Tel: +886-(2) 8226-3990

Fax: +886-(2) 8226-3992

Email: support@supermicro.com.tw

Website: www.supermicro.com.tw

Table of Contents

Preface

About this User's Guide	iii
About this Add-on Card	iii
An Important Note to the User	iii
Returning Merchandise for Service	iii
Conventions Used in the User's Guide	iv
Naming Convention	iv
Contacting Supermicro	v

Chapter 1 Overview

1-1 Overview	1-1
1-2 Key Features	1-1
1-3 Specifications	1-1
General	1-1
InfiniBand	1-2
Enhanced Features	1-2
CPU Offloads	1-2
Overlay Networks	1-3
Hardware-Based I/O Features Virtualization	1-3
Virtualization	1-3
Protocol Support	1-4
Remote Boot	1-4
Management Features	1-4
Operating System Support	1-4
Power Consumption	1-5
Operating Conditions	1-5
Physical Dimensions	1-5
Supported Platforms	1-5
1-4 Available SKUs	1-5

Chapter 2 Hardware Components

2-1 Add-On Card Image and Layout	2-1
2-2 Major Components	2-2

Chapter 3 Installation

3-1 Static-Sensitive Devices	3-1
Precautions	3-1
Unpacking	3-1
3-2 Before Installation	3-2
3-3 Add-on Card Installation	3-2

- 3-4 Installing Drivers on Windows..... 3-4
- 3-5 Installing Drivers on Linux..... 3-5
 - Build a Binary RPM Package..... 3-5
- 3-6 Installing Drivers on FreeBSD 3-6
- 3-7 Installing Drivers (for Mellanox ConnectX-4 VPI) 3-8
 - Linux Drivers 3-8
 - Windows Drivers 3-9
- 3-8 Using the Mellanox Controller for PXE Boot 3-9

Chapter 1


Overview

1-1 Overview

Congratulations on purchasing your add-on card from an acknowledged leader in the industry. Supermicro products are designed with the utmost attention to detail to provide you with the highest standards in quality and performance. For product support and updates, please refer to our website at <http://www.supermicro.com/products/nfo/networking.cfm#adapter>.

1-2 Key Features

The key features of this add-on card include:

- Supermicro Blade Mezzanine Card
- Mellanox ConnectX-4 VPI InfiniBand EDR controller
- Up to 100Gbps InfiniBand
- Virtual Protocol Interconnect (VPI)
- SR-IOV for virtualization
- NC-SI for remote management
- RDMA
- RoHS compliant 6/6 

1-3 Specifications

General

- Supermicro Blade Mezzanine Card
- Mellanox ConnectX-4 VPI InfiniBand EDR controller

InfiniBand

- IBTA specification 1.3 compliant
- RDMA, Send/Receive semantics
- Hardware-based congestion control
- 16 million I/O channels
- 256 to 4Kbyte MTU, 2Gbyte messages
- 8 virtual lanes + VL15

Enhanced Features

- Hardware-based reliable transport
- Collective operations offloads
- Vector collective operations offloads
- Mellanox PeerDirectT RDMA communication acceleration
- 64/66 encoding
- Extended Reliable Connected transport (XRC)
- Dynamically Connected transport (DCT)
- Enhanced Atomic operations
- Advanced memory mapping support, allowing user mode registration and re-mapping of memory (UMR)
- On demand paging (ODP) – registration free RDMA memory access

CPU Offloads

- RDMA
- TCP/UDP/IP stateless offload

- LSO, LRO, checksum offload
- Intelligent interrupt coalescence

Overlay Networks

- Stateless offloads for overlay networks and tunneling protocols
- Hardware offload of encapsulation and decapsulation of NVGRE overlay networks

Hardware-Based I/O Features Virtualization

- Single root IOV
- Multi-function per port
- Address translation and protection
- Multiple queues per virtual machine
- Enhanced QoS for vNICs
- VMware NetQueue support

Virtualization

- SR-IOV: Up to 256 virtual functions
- SR-IOV: Up to 16 physical functions per port
- Virtualization hierarchies (e.g., NPAR)
- Virtualizing Physical Functions on a physical port
- SR-IOV on every Physical Function
- 1K ingress and egress QoS levels
- Guaranteed QoS for VMs

Protocol Support

- OpenMPI, IBM PE, OSU MPI (MVAPICH/2), Intel® MPI
- Platform MPI, UPC, Mellanox SHMEM
- TCP/UDP, EoIB, IPoIB, SDP, RDS, MPLS
- SRP, iSER, NFS RDMA, SMB Direct
- uDAPL

Remote Boot

- Remote boot over InfiniBand
- Remote boot over iSCSI
- PXE and UEFI

Management Features

- Asset Management support on Supermicro platforms
- Controller asset tags such as part number, revision, serial number, and MAC addresses
- Controller thermal sensor
- NC-SI for remote management

Operating System Support

- Linux
- Windows
- FreeBSD
- VMware

Power Consumption

- Typical power consumption: 12.5W
- Maximum power consumption: 14.6W

Operating Conditions

- Operating temperature: 0°C to 55°C (32°F to 131°F)
- Storage temperature: -40°C to 70°C (-40°F to 158°F)
- Storage humidity: 90% non-condensing relative humidity at 35°C

Physical Dimensions

- Card PCB dimensions: 75.1mm (2.95in) x 133.5mm (5.26in) (W x D)

Supported Platforms

- Supermicro® SuperBlade motherboard with mezzanine slot



Note: This product is sold only as part of an integrated solution with Supermicro blade systems.

1-4 Available SKUs

SKUs	Part Number	Description
AOC-IBH-X4ES	AOC-IBH-X4ES	Mezzanine Card for InfiniBand EDR Single Port based on Mellanox ConnectX-4 VPI, RoHS

Chapter 2

Hardware Components

2-1 Add-On Card Image and Layout



Figure 2-1. Image of AOC-IBH-X4ES

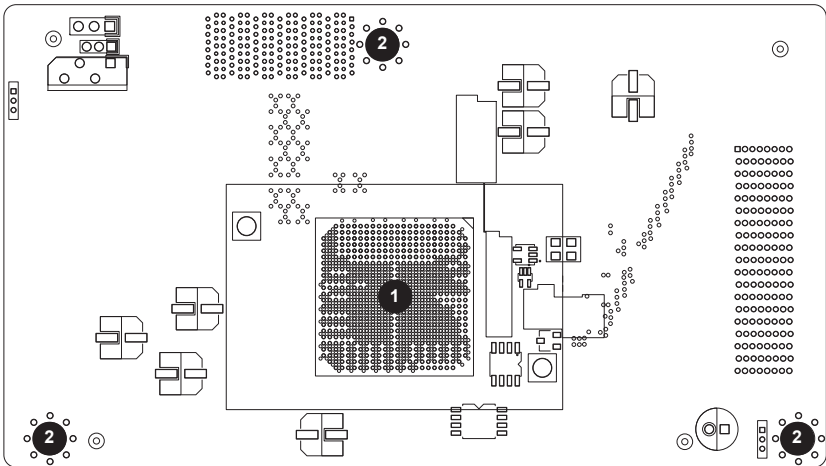


Figure 2-2. Layout of AOC-IBH-X4ES

- | |
|---|
| 1. Mellanox ConnectX-4 VPI InfiniBand EDR |
| 2. Mounting Holes |

2-2 Major Components

The following major components are built-in on the AOC-IBH-X4ES:

1. One (1) Mellanox ConnectX-4 VPI InfiniBand EDR controller
2. Three (3) Mounting Holes

Chapter 3

Installation

3-1 Static-Sensitive Devices

Electrostatic Discharge (ESD) can damage electronic components. To avoid damaging your add-on card, it is important to handle it very carefully. The following measures are generally sufficient to protect your equipment from ESD.

Precautions

- Use a grounded wrist strap designed to prevent static discharge.
- Touch a grounded metal object before removing the add-on card from the antistatic bag.
- Handle the add-on card by its edges only; do not touch its components.
- Put the add-on card back into the antistatic bags when not in use.
- For grounding purposes, make sure that your system chassis provides excellent conductivity between the power supply, the case, the mounting fasteners and the add-on card.

Unpacking

The add-on card is shipped in antistatic packaging to avoid static damage. When unpacking your component or system, make sure you are static protected.



Note: To avoid damaging your components and to ensure proper installation, always connect the power cord last, and always unplug it before adding, removing, or changing any hardware components.

3-2 Before Installation

Before you install the add-on card, follow the instructions below.

1. Use industry-standard anti-static equipment such as gloves or a wrist strap and follow the precautions on [page 3-1](#) to avoid damage caused by ESD.
2. Familiarize yourself with the server, motherboard, and/or chassis documentation.
3. Confirm that your operating system includes the latest updates and hotfixes.

3-3 Add-on Card Installation

Follow the steps below to install the add-on card into your system.

Note: This add-on card does not support hot plug.

1. Remove the CPU Blade from the enclosure.
2. Position the add-on card in front of the corresponding slot on the motherboard and gently push the card until it slides into the slot.

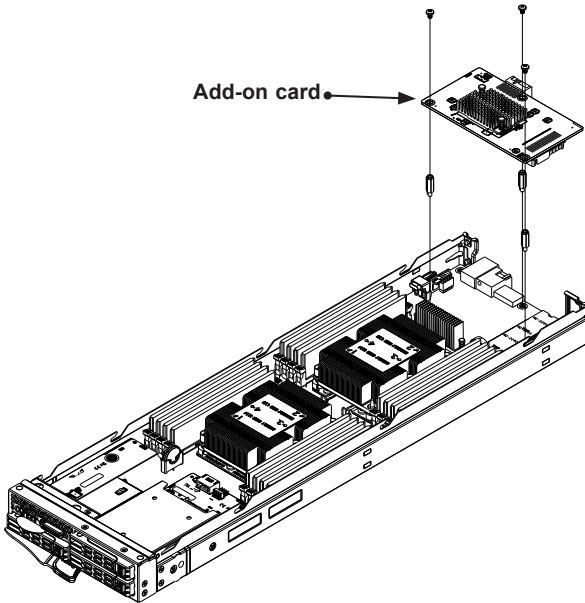


Figure 3-1. Installing the Add-on Card

3. Insert the screws into the add-on card's and motherboard's mounting holes.
4. Secure the add-on card and motherboard to the chassis using the screws.
Note: To avoid the motherboard being damaged, **DO NOT** overtighten the screws.
5. Re-insert the CPU Blade into the enclosure.

3-4 Installing Drivers on Windows

Follow the steps below to install the drivers for Windows. Download the drivers from the Supermicro website at <https://www.supermicro.com/wftp/driver>.

1. Run CDR-NIC.
2. When the SUPERMICRO window appears, click on the computer icon next to Mellanox 100GbE Adapters.

Note: If the *FOUND NEW HARDWARE WIZARD* screen displays on your system, click CANCEL.



3. Click on INSTALL DRIVERS AND SOFTWARE.
4. Follow the prompts to complete the installation.

3-5 Installing Drivers on Linux

Follow the steps below to install the drivers in Linux.

Build a Binary RPM Package

1. Run 'rpmbuild -tb <filename.tar.gz>'
2. Replace <filename.tar.gz> with the specific filename of the driver.

Note: For the build to work properly, the current running kernel MUST match the version and configuration of the installed kernel sources. If you have just recompiled the kernel, reboot the system at this time.

Follow the instructions below to build the driver manually.

1. Move the base driver tar file to the directory of your choice. For example:

```
/home/username/ixgbe
```

or

```
/usr/local/src/ixgbe
```

2. Untar/unzip the archive, where <x.x.x> is the version number for the driver tar file:

```
tar xzf ixgbe-x.x.x.tar.gz
```

3. Change to the driver src directory, where <x.x.x> is the version number for the driver tar:

```
cd ixgbe-x.x.x/src/
```

4. Compile the driver module:

```
make install
```

The binary will be installed as:

```
/lib/modules/[KERNEL_VERSION]/kernel/drivers/net/ixgbe/ixgbe.[k]o
```

The install locations listed above are the default locations. They may not be correct for certain Linux distributions. For more information, see the `ldistrib.txt` file included in the driver tar.

Note: `IXGBE_NO_LRO` is a compile time flag. The user can enable it at compile time to remove support for LRO from the driver. The flag is used by adding `CFLAGS_EXTRA="-DIXGBE_NO_LRO"` to the make file when it's being compiled.

```
make CFLAGS_EXTRA="-DIXGBE_NO_LRO" install
```

5. Load the module:

For kernel 2.6.x, use the `modprobe` command:

```
modprobe ixgbe <parameter>=<value>
```

For 2.6 kernels, the `insmod` command can be used if the full path to the driver module is specified. For example:

```
insmod /lib/modules/<KERNEL_VERSION>/kernel/drivers/net/  
ixgbe/ixgbe.ko
```

In addition, when using 2.6-based kernels, make sure that older `ixgbe` drivers are removed from the kernel before loading the new module. To do this, use:

```
rmmod ixgbe; modprobe ixgbe
```

6. Assign an IP address to the interface by entering the following, where `x` is the interface number:

```
ifconfig ethx <IP_address> netmask <netmask>
```

7. Verify that the interface works. Enter the following, where `<IP_address>` is the IP address for another machine on the same subnet as the interface that is being tested:

```
ping <IP_address>
```

3-6 Installing Drivers on FreeBSD

Follow the instructions below to install the drivers in FreeBSD kernel 4.8 or later. In the instructions below, `x.x.x` is the driver version as indicated in the name of the driver tar file.

Note: You must have kernel sources installed in order to compile the driver module.

1. Move the base driver tar file to the directory of your choice. For example, use `/home/username/ixgb` or `/usr/local/src/ixgb`.

2. Untar/unzip the archive:

```
tar xfz ixgb-x.x.x directory
```

3. To install man page:

```
cd ixgb-x.x.x
gzip -c ixgb.4 > /usr/share/man/man4/ixgb.4.gz
```

4. To load the driver onto a running system, perform the following steps:

```
cd ixgb-x.x.x
make
or
cd ixgb-x.x.x/src
make load
```

5. To assign an IP address to the interface, enter the following:

```
ifconfig ixgb<interface_num> <IP_address>
```

6. Verify that the interface works. Enter the following, where <IP_address> is the IP address for another machine on the same subnet as the interface that is being tested:

```
ping <IP_address>
```

7. If you want the driver to load automatically when the system is booted:

```
cd ixgb-x.x.x/src
make load
cp if_ixgb.ko /modules
```

Edit `/boot/loader.conf`, and add the following line:

```
if_ixgb_load="YES"
```

or

compile the driver into the kernel (see item 8). Edit `/etc/rc.conf`, and create the appropriate `ifconfig_ixgb<interface_num>` entry:

```
ifconfig_ixgb<interface_num>="<ifconfig_settings>"
```

Example usage:

```
ifconfig_ixgb0="inet 192.168.10.1 netmask 255.255.255.0"
```

8. If you want to compile the driver into the kernel, enter:

```
cd ixgb-x.x.x/src
mkdir /usr/src/sys/dev/ixgb
cp if_ixgb* /usr/src/sys/dev/ixgb
cp ixgb* /usr/src/sys/dev/ixgb
cp Makefile.kernel /usr/src/sys/modules/ixgb/Makefile
```

Edit the `/usr/src/sys/conf/files.i386` file, and add the following line:

```
dev/ixgb/ixgb_hw.c optional ixgb
dev/ixgb/ixgb_ee.c optional ixgb
dev/ixgb/if_ixgb.c optional ixgb
```

Remove the following lines from the `/usr/src/sys/conf/files.i386` file if they exist:

```
/dev/ixgb/if_ixgb_fx_hw.c optional ixgb
/dev/ixgb/if_ixgb_phy.c optional ixgb
```

Edit the kernel configuration file (i.e., `GENERIC` or `MYKERNEL`) in `/usr/src/sys/i386/conf`, and ensure the following line is present:

```
device ixgb
```

Compile and install the kernel. Reboot the system for the kernel updates to take effect.

3-7 Installing Drivers (for Mellanox ConnectX-4 VPI)

Use the procedures below to install drivers for Linux.

Linux Drivers

Use the following procedures to install drivers on the Linux operating system.

Installing InfiniBand Drivers for the Linux Operating System

1. Download the driver from the Supermicro CDR-NIC LAN driver CD, the Mellanox® Support website that contains the latest driver, or go to the Supermicro site at https://www.supermicro.com/wftp/Networking_Drivers/Mellanox/. Go to the following directory: Mellanox > Linux.
2. Choose the desired InfiniBand Linux driver package file.

3. Install the driver by entering the following commands:

```
tar xzvf MLNX_OFED_LINUX-<ver>.tgz
cd MLNX_OFED_LINUX-<ver>
./mlnxofedinstall --without-fw-update
```

This installs the Linux driver to your system. For more driver installation information, please refer to the Mellanox Support website.

Windows Drivers

Use the following procedures to install drivers on the Windows operating system.

Installing InfiniBand Drivers for the Windows Operating System

1. Download the driver from the Supermicro CDR-NIC LAN driver CD, the Mellanox Support website that contains the latest driver, or go to the Supermicro site at https://www.supermicro.com/wftp/Networking_Drivers/Mellanox/. Go to the following directory: Mellanox > Windows.
2. Choose the desired InfiniBand Windows driver package file.
3. Double-click to run and install the driver package file.

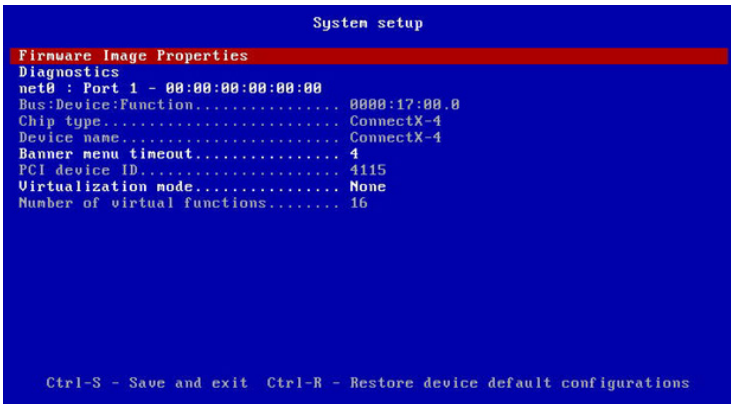
3-8 Using the Mellanox Controller for PXE Boot

Please follow the instructions below to use PXE boot.

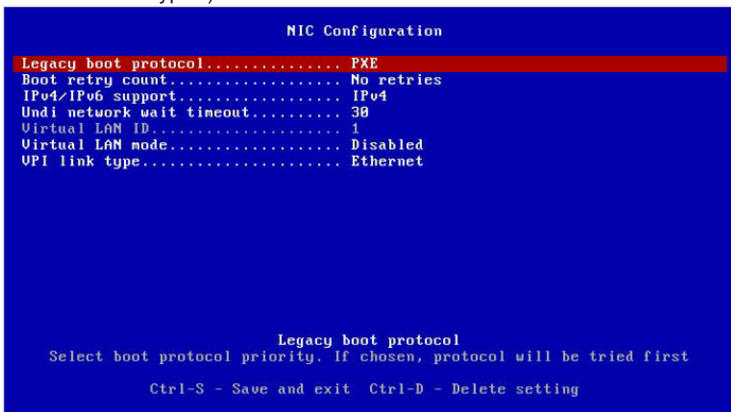
1. Boot up the system and keep pressing <CTRL+B> to boot into FlexBoot Menu:

```
FlexBoot v3.5.305
FlexBoot PCI 17:00.0 3D00 PCI3 00 PnP PMM+13870000+13894000 C900
Press Ctrl-B to configure FlexBoot v3.5.305 (PCI 17:00.0)...
```

- When the System setup page appears, select "net0: Port1".



- And then click on "NIC Configuration". Select "PXE" under "Legacy boot protocol". (To use PXE in InfiniBand mode, InfiniBand needs to be selected under "VPI link type".)



- Go to BIOS. From the top of the tool bar, select "Boot" to enter the submenu. Select "Network Drive BBS Priorities" and then select "FlexBoot v#.#.###..." under Boot Option #1.



- To boot from PXE automatically, make sure Boot Option #1 is "Network: Flex boot" as the image shown below.

