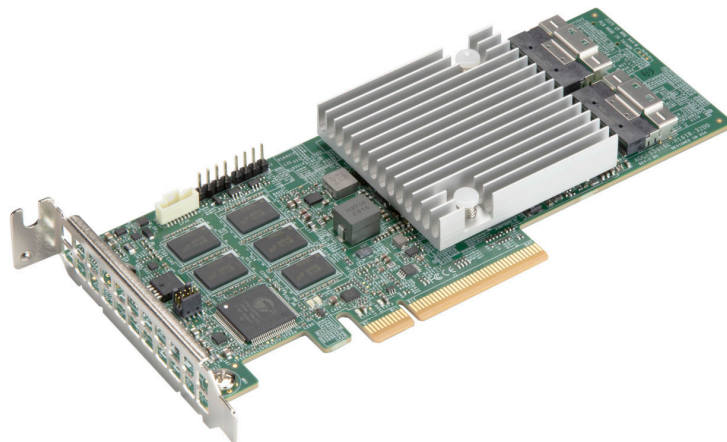




AOC-S3908L-H8iR
AOC-S3908L-H8iR-32DD
AOC-S3908L-H8iR-16DD
AOC-S3916L-H8iR
AOC-S39016L-H8iR-32DD



USER'S MANUAL

Revision 1.0c

The information in this user's manual has been carefully reviewed and is believed to be accurate. The manufacturer assumes no responsibility for any inaccuracies that may be contained in this document, and makes no commitment to update or to keep current the information in this manual, or to notify any person or organization of the updates. **Please Note: For the most up-to-date version of this manual, please see our website at www.supermicro.com.**

Super Micro Computer, Inc. ("Supermicro") reserves the right to make changes to the product described in this manual at any time and without notice. This product, including software and documentation, is the property of Supermicro and/or its licensors, and is supplied only under a license. Any use or reproduction of this product is not allowed, except as expressly permitted by the terms of said license.

IN NO EVENT WILL Super Micro Computer, Inc. BE LIABLE FOR DIRECT, INDIRECT, SPECIAL, INCIDENTAL, SPECULATIVE OR CONSEQUENTIAL DAMAGES ARISING FROM THE USE OR INABILITY TO USE THIS PRODUCT OR DOCUMENTATION, EVEN IF ADVISED OF THE POSSIBILITY OF SUCH DAMAGES. IN PARTICULAR, SUPER MICRO COMPUTER, INC. SHALL NOT HAVE LIABILITY FOR ANY HARDWARE, SOFTWARE, OR DATA STORED OR USED WITH THE PRODUCT, INCLUDING THE COSTS OF REPAIRING, REPLACING, INTEGRATING, INSTALLING OR RECOVERING SUCH HARDWARE, SOFTWARE, OR DATA.

Any disputes arising between manufacturer and customer shall be governed by the laws of Santa Clara County in the State of California, USA. The State of California, County of Santa Clara shall be the exclusive venue for the resolution of any such disputes. Supermicro's total liability for all claims will not exceed the price paid for the hardware product.

FCC Statement: This equipment has been tested and found to comply with the limits for a Class A digital device pursuant to Part 15 of the FCC Rules. These limits are designed to provide reasonable protection against harmful interference when the equipment is operated in industrial environment. This equipment generates, uses, and can radiate radio frequency energy and, if not installed and used in accordance with the manufacturer's instruction manual, may cause harmful interference with radio communications. Operation of this equipment in a residential area is likely to cause harmful interference, in which case you will be required to correct the interference at your own expense.

California Best Management Practices Regulations for Perchlorate Materials: This Perchlorate warning applies only to products containing CR (Manganese Dioxide) Lithium coin cells. "Perchlorate Material-special handling may apply. See www.dtsc.ca.gov/hazardouswaste/perchlorate".



WARNING: This product can expose you to chemicals including lead, known to the State of California to cause cancer and birth defects or other reproductive harm. For more information, go to www.P65Warnings.ca.gov.

The products sold by Supermicro are not intended for and will not be used in life support systems, medical equipment, nuclear facilities or systems, aircraft, aircraft devices, aircraft/emergency communication devices or other critical systems whose failure to perform be reasonably expected to result in significant injury or loss of life or catastrophic property damage. Accordingly, Supermicro disclaims any and all liability, and should buyer use or sell such products for use in such ultra-hazardous applications, it does so entirely at its own risk. Furthermore, buyer agrees to fully indemnify, defend and hold Supermicro harmless for and against any and all claims, demands, actions, litigation, and proceedings of any kind arising out of or related to such ultra-hazardous use or sale.

Manual Revision 1.0c

Release Date: January 17, 2024

Unless you request and receive written permission from Super Micro Computer, Inc., you may not copy any part of this document. Information in this document is subject to change without notice. Other products and companies referred to herein are trademarks or registered trademarks of their respective companies or mark holders.

Copyright © 2024 by Super Micro Computer, Inc.
All rights reserved.

Printed in the United States of America

Preface

About This Manual

This user's guide is written for system integrators, IT technicians, and knowledgeable end users. It provides information for the installation and use of the AOC-S3908L-H8iR, AOC-S3908L-H8iR-32DD, AOC-S3908L-H8iR-16DD, AOC-S3916L-H16iR, and AOC-S3916L-H16iR-32DD add-on card.

About This Add-On Card

The Supermicro® AOC-S3908L-H8iR, AOC-S3908L-H8iR-16DD, AOC-S3908L-H8iR-32DD, AOC-S3916L-H16iR, and AOC-S3916L-H16iR-32DD are the most technologically-advanced, cost-effective, and reliable SAS MegaRAID® adapters in today's market. With the Broadcom® 3908 or 3916 SAS controller, eight or sixteen 12 Gb/s SAS connectors, and a low-profile PCIe Gen4 x8 slot built in, these add-on cards offer high-performance connectivity with enormous storage capacity to meet the growing needs of enterprise server platforms. With the optional SuperCap/TFM unit built-in, the add-on cards support 8 GB DDR4 on-card cache at a speed of 2666MHz (maximum), providing cached data protection during catastrophic system failures.

In addition, the embedded Broadcom® SAS 3908/3916 I/O processor offers optimal RAID performance and a PCI-Express host interface for increased I/O bandwidth. The AOC-S3908L-H8iR, AOC-S3908L-H8iR-16DD, AOC-S3908L-H8iR-32DD, AOC-S3916L-H16iR, and AOC-S3916L-H16iR-32DD adapters deliver an intelligent and robust RAID solution to the market.

An Important Note to the User

All graphic images and layout drawings shown in this user's guide are based upon the latest PCB revision available at the time of publishing this user's guide. The add-on card you have received may or may not look exactly the same as the graphics shown in this user's guide.

An Important Note to the User

A receipt or copy of your invoice marked with the date of purchase is required before any warranty service will be rendered. You can obtain service by calling your vendor for a Returned Merchandise Authorization (RMA) number. When returning to the manufacturer, the RMA number should be prominently displayed on the outside of the shipping carton and mailed prepaid or hand-carried. Shipping and handling charges will be applied for all orders that must be mailed when service is complete. For faster service, RMA authorizations may be requested online (<http://www.supermicro.com/support/rma/>).

This warranty only covers normal consumer use and does not cover damages incurred in shipping or from failure due to the alteration, misuse, abuse, or improper maintenance of products.

During the warranty period, contact your distributor first for any product problems.

Conventions Used in the Manual

Special attention should be given to the following symbols for proper installation and to prevent damage done to the components or injury.

Important Links



Warning! Indicates important information given to prevent equipment/property damage or personal injury.



Warning! Indicates high voltage may be encountered while performing a procedure.



Important: Important information given to ensure proper system installation or to relay safety precautions.



Note: Additional information given to differentiate various models or to provide information for proper system setup.

For your system to work properly, please follow the links below to download all necessary drivers/utilities and the user's manual for your server.

- Supermicro product manuals: <https://www.supermicro.com/support/manuals/>
- Product drivers and utilities: <ftp://ftp.supermicro.com>
- Product safety info: http://www.supermicro.com/about/policies/safety_information.cfm
- If you have any questions, please contact our support team at: support@supermicro.com

This manual may be periodically updated without notice. Please check the Supermicro website for possible updates to the manual revision level.

Naming Convention for Networking Adapters

AOC- S 3108 L - H 8 iR

Prefix	1st	2nd	3rd	4th	5th	6th
--------	-----	-----	-----	-----	-----	-----

Character (Set)	Representation	Options (SAS AOC)
Prefix	Product Family	<ul style="list-style-type: none"> AOC = Add On Card
1st	Form Factor	<ul style="list-style-type: none"> U = UIO S = Standard PCI-E
2nd	Chipset	<ul style="list-style-type: none"> 3808 = Broadcom 3808 chip 3816 = Broadcom 3816 chip 3908 = Broadcom 3908 chip 3916 = Broadcom 3916 chip 3008 = Broadcom 3008 chip 3108 = Broadcom 3108 chip 3216 = Broadcom 3216 chip 3616 = Broadcom 3616 chip 2208 = Broadcom 2208 chip 2308 = Broadcom 2308 chip
3rd	Card Form Factor	<ul style="list-style-type: none"> L = Low-profile R = Full-height Half-length F = Full-height Full-length
4th	Card Usage	<ul style="list-style-type: none"> H = ROC high performance RAID card L = Entry level HBA MV = Marvel
5th	Port Number	<ul style="list-style-type: none"> 8 = 8 ports
6th	Port Type	<ul style="list-style-type: none"> iR = Full RAID support e = HBA only (No RAID support / IT mode) i = SW RAID (Minial RAID support / IR mode)

Contacting Supermicro

Headquarters

Address: Super Micro Computer, Inc.
980 Rock Ave.
San Jose, CA 95131 U.S.A.

Tel: +1 (408) 503-8000

Fax: +1 (408) 503-8008

Email: marketing@supermicro.com (General Information)
Sales-USA@supermicro.com (Sales Inquiries)
Government_Sales-USA@supermicro.com (Gov. Sales Inquiries)
support@supermicro.com (Technical Support)
RMA@supermicro.com (RMA Support)
Webmaster@supermicro.com (Webmaster)

Website: www.supermicro.com

Europe

Address: Super Micro Computer B.V.
Het Sterrenbeeld 28, 5215 ML
's-Hertogenbosch, The Netherlands

Tel: +31 (0) 73-6400390

Fax: +31 (0) 73-6416525

Email: Sales_Europe@supermicro.com (Sales Inquiries)
Support_Europe@supermicro.com (Technical Support)
RMA_Europe@supermicro.com (RMA Support)

Website: www.supermicro.nl

Asia-Pacific

Address: Super Micro Computer, Inc.
3F, No. 150, Jian 1st Rd.
Zhonghe Dist., New Taipei City 235

Asia-Pacific

Taiwan (R.O.C)

Tel: +886-(2) 8226-3990

Fax: +886-(2) 8226-3992

Email: Sales-Asia@supermicro.com.tw (Sales Inquiries)

Support@supermicro.com.tw (Technical Support)

RMA@supermicro.com.tw (RMA Support)

Website: www.supermicro.com.tw

Table of Contents

Chapter 1 Introduction

1.1 Overview.....	9
1.2 Key Features.....	9

Chapter 2 Hardware Components

2.1 Add-On Card Image and Layout.....	11
2.2 Major Components.....	13
2.3 SAS 3.0 Ports and Headers.....	14
2.4 Front LED Indicators.....	16
2.5 Rear LED Indicators.....	17

Chapter 3 Installation

3.1 Static-Sensitive Devices.....	19
3.2 Before Installation.....	20
3.3 Installing the Add-on Card (with 0.5U bracket).....	20

Chapter 4 Configuring the Broadcom® MegaRAID® Setting

4.1 RAID Minimum Drive Requirements.....	21
4.2 Using the Broadcom® MegaRAID® Configuration Utility.....	22
4.3 Broadcom® MegaRAID® Main Screen.....	24
4.4 Creating a Virtual Drive.....	26
4.5 Drive Management.....	32
4.6 Controller Management.....	34
4.7 Properties.....	37
4.8 Foreign Configuration Management.....	39

Chapter 5 MegaRAID® Controller Firmware Update Procedures

5.1 Flashing Firmware Using StorCLI under DOS.....	42
5.2 Flashing Firmware Using LSI Storage Authority.....	44

Chapter 6 Booting

6.1 Configuring Boot Settings.....	49
------------------------------------	----

Chapter 1

Introduction

1.1 Overview

Congratulations on purchasing your add-on card from an acknowledged leader in the industry. Supermicro products are designed with the utmost attention to detail to provide you with the highest standards of quality and performance. For product support and updates, please refer to our website at <http://www.supermicro.com/products/nfo/networking.cfm#adapter>.

1.2 Key Features

The key features of this add-on card include the following.

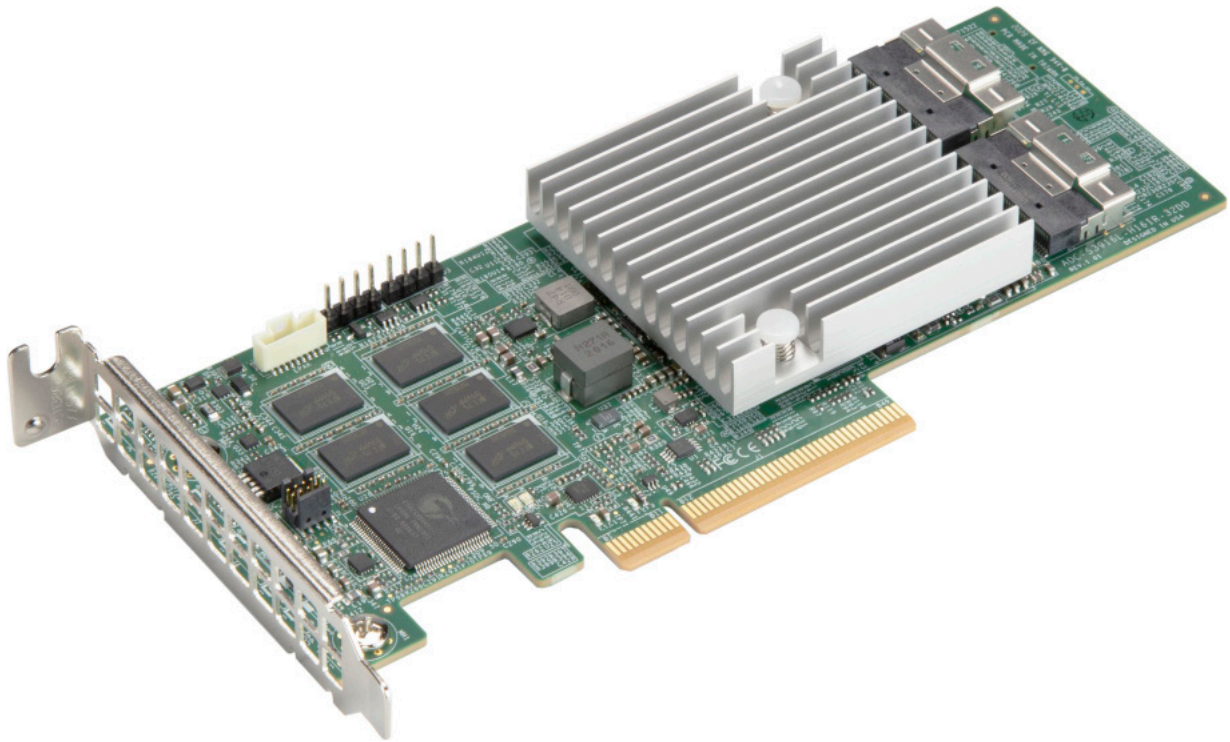
- Low profile x8 PCIe Gen4 controller
- Eight internal SAS3 ports with one SlimSAS HD connector (AOC-S3908L-H8iR, AOC-S3908L-H8iR-16DD, and AOC-S3908L-H8iR-32DD) or 16 internal SAS3 ports with two SlimSAS HD connectors (AOC-S3916L-H16iR and AOC-S3916L-H16iR-32DD)
- Hardware RAID 0, 1, 5, 6,10, 50, and 60 supported
- Supports up to 16 (AOC-S3908L-H8iR-16DD), 32 (AOC-S3908L-H8iR-32DD and AOC-S3916L-H16iR-32DD), or 240 (AOC-S3908L-H8iR and AOC-S3916L-H16iR) physical devices with expander
- 8 GB DDR4 on-card cache with a speed of up to 2666 MHz for cached data protection
- 1x (AOC-S3908L-H8iR, AOC-S3908L-H8iR-16DD, and AOC-S3908L-H8iR-32DD) or 2x (AOC-S3916L-H16iR and AOC-S3916L-H16iR-32DD) SlimSAS x8 black (100 ohm) connector(s)
- Supports MCTP over PCIe or I2C (MCTP over I2C by default)
- On-board TFM Included
- CacheVault to protect onboard cache memory
- Optional SuperCap BTR-CVPM05
- Supports LSA Storage Authority Software WebGUI

- Secure Boot
- Support includes advanced software encryption
- Supports 3.0, 6.0, 12.0 Gb/s SAS, and 3.0 & 6.0 Gb SATA data transfer rates
- OS support: Windows and Linux
- UEFI Configuration Utility only
- UEFI/Legacy Boot
- Power consumption: 14 (AOC-S3908L-H8iR, AOC-S3908L-H8iR-16DD, and AOC-S3908L-H8iR-32DD) or 18 (AOC-S3916L-H16iR and AOC-S3916L-H16iR-32DD) watts
- Thermal operating range: system-dependent (55°C or higher with sufficient airflow)
- Dimensions 2.71" (H) x 6.6" (L) (68.83cm (H) x 167.64cm (L))

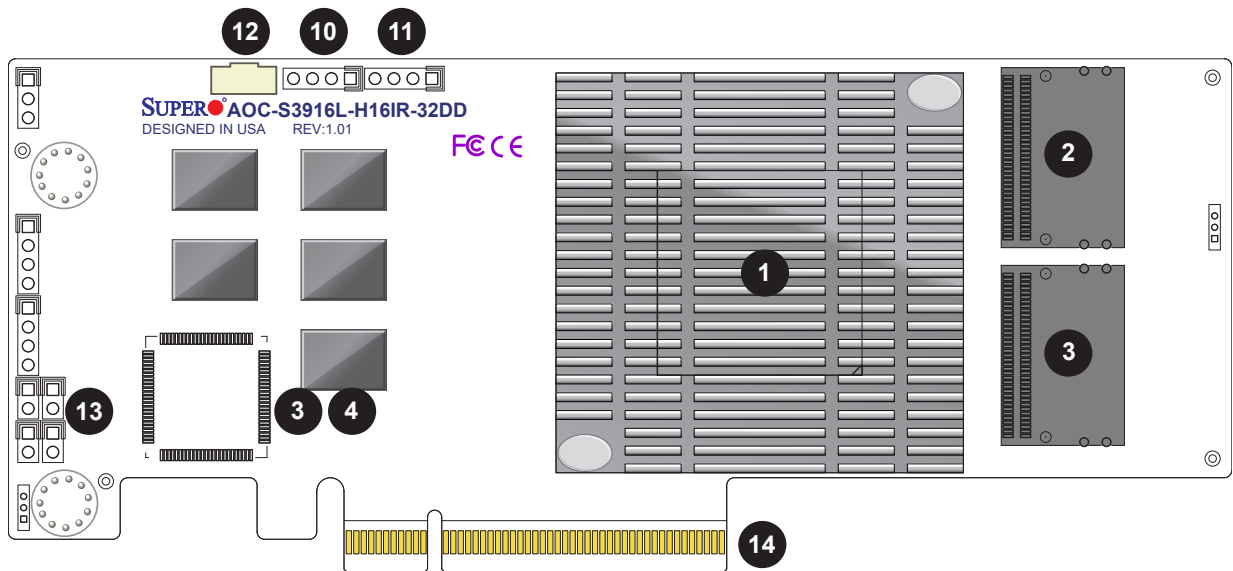
Chapter 2

Hardware Components

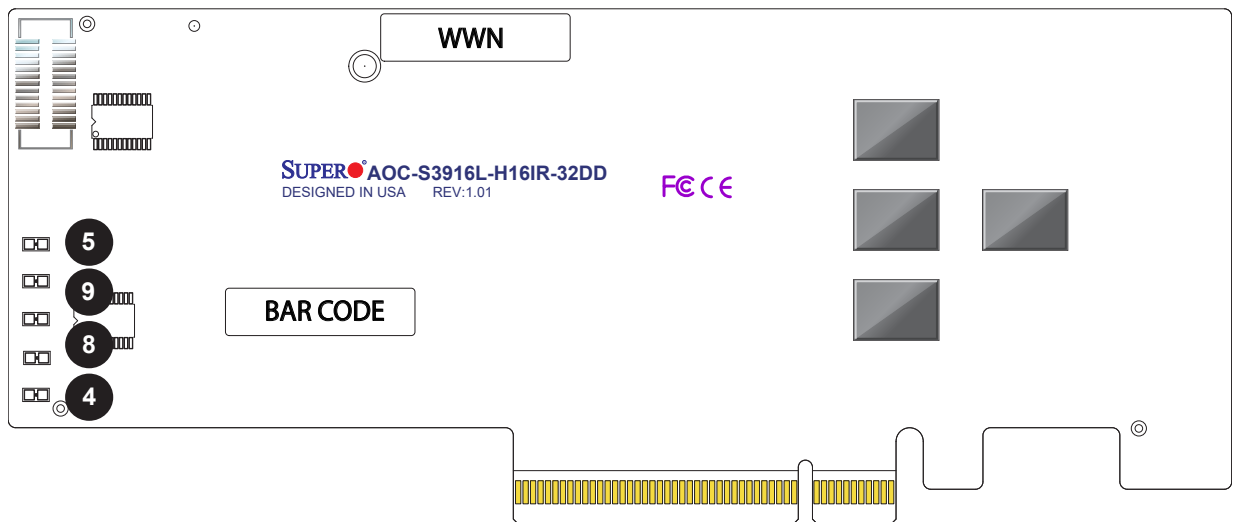
2.1 Add-On Card Image and Layout



AOC-S3916L-H16iR-32DD Image



AOC-S3916L-H16iR-32DD Front Layout



AOC-S3916L-H16iR-32DD Bottom Layout

2.2 Major Components

The following major components are installed on the AOC-S3908L-H8iR(-32DD/16DD)/AOC-S3916L-H16iR(-32DD):

AOC-S3908L-H8iR(-32DD/16DD)/AOC-S3916L-H16iR(-32DD) Major Components		
No	Component Name	Definition
1	3908/3916 SAS CTRL	SAS controller
2	CN0	SAS ports 0-7
3	CN1	SAS ports 8-15 (3916 only)
4	D3	System Heartbeat LED
5	D4	System Error LED
6	D6	ONFI Activity LED
7	D7	PSoC Heartbeat LED
8	D10	EPAK_FLT LED
9	D12	Overtemp LED
10	J2	Serial Debug UART Header
11	J3	UART0 Header
12	J6	SuperCap 9-pin Connector
13	JP2	SBL_Disable Jumper
14	PCIe 4.0 x8 slot	PCIe slot

2.3 SAS 3.0 Ports and Headers

SAS Ports

Eight SAS ports, supported by the CN0 connector on the Broadcom® 3908 SAS controller, or 16 SAS ports, supported by the CN0 and CN1 connectors on the Broadcom® 3916 SAS controller, are located on the add-on card. SAS 0-7 and SAS 8-15 support SAS3 SFF-8654 connections. See the tables below for pin definitions.

CN0 Pin Definitions				CN1 Pin Definitions			
Pin#	Signal	Pin#	Signal	Pin#	Signal	Pin#	Signal
A1	GND	B1	GND	A1	GND	B1	GND
A2	RX0+	B2	TX0+	A2	RX8+	B2	TX8+
A3	RX0-	B3	TX0-	A3	RX8-	B3	TX8-
A4	GND	B4	GND	A4	GND	B4	GND
A5	RX1+	B5	TX1+	A5	RX9+	B5	TX9+
A6	RX1-	B6	TX1-	A6	RX9-	B6	TX9-
A7	GND	B7	GND	A7	GND	B7	GND
A8	BP_TYPEA	B8	SClockA	A8	BP_TYPEC	B8	SClockC
A9	SDataOutA	B9	SloadA	A9	SDataOutC	B9	SloadC
A10	GND	B10	GND	A10	GND	B10	GND
A11	NC	B11	SDataInA	A11	NC	B11	SDataInC
A12	NC	B12	CNTRLR_TYPEA	A12	NC	B12	CNTRLR_TYPEC
A13	GND	B13	GND	A13	GND	B13	GND
A14	RX2+	B14	TX2+	A14	RX10+	B14	TX10+
A15	RX2-	B15	TX2-	A15	RX10-	B15	TX10-
A16	GND	B16	GND	A16	GND	B16	GND
A17	RX3+	B17	TX3+	A17	RX11+	B17	TX11+
A18	RX3-	B18	TX3-	A18	RX11-	B18	TX11-
A19	GND	B19	GND	A19	GND	B19	GND
A20	RX4+	B20	TX4+	A20	RX12+	B20	TX12+
A21	RX4-	B21	TX4-	A21	RX12-	B21	TX12-
A22	GND	B22	GND	A22	GND	B22	GND
A23	RX5+	B23	TX5+	A23	RX13+	B23	TX13+
A24	RX5-	B24	TX5-	A24	RX13-	B24	TX13-
A25	GND	B25	GND	A25	GND	B25	GND
A26	BP_TYPEB	B26	SClockB	A26	BP_TYPED	B26	SClockD
A27	SDataOutB	B27	SLoadB	A27	SDataOutD	B27	SLoadD
A28	GND	B28	GND	A28	GND	B28	GND
A29	NC	B29	SDataInB	A29	NC	B29	SDataInD
A30	NC	B30	CNTRLR_TYPEB	A30	NC	B30	CNTRLR_TYPED
A31	GND	B31	GND	A31	GND	B31	GND
A32	RX6+	B32	TX6+	A32	RX14+	B32	TX14+
A33	RX6-	B33	TX6-	A33	RX14-	B33	TX14-
A34	GND	B34	GND	A34	GND	B34	GND
A35	RX7+	B35	TX7+	A35	RX15+	B35	TX15+
A36	RX7-	B36	TX7-	A36	RX15-	B36	TX15-
A37	GND	B37	GND	A37	GND	B37	GND

Serial Debug UART Header

A four-pin Serial Debug header, located at J2, is used for the manufacturer's diagnostic purposes only. See the layout below for the location.

UART0 Header

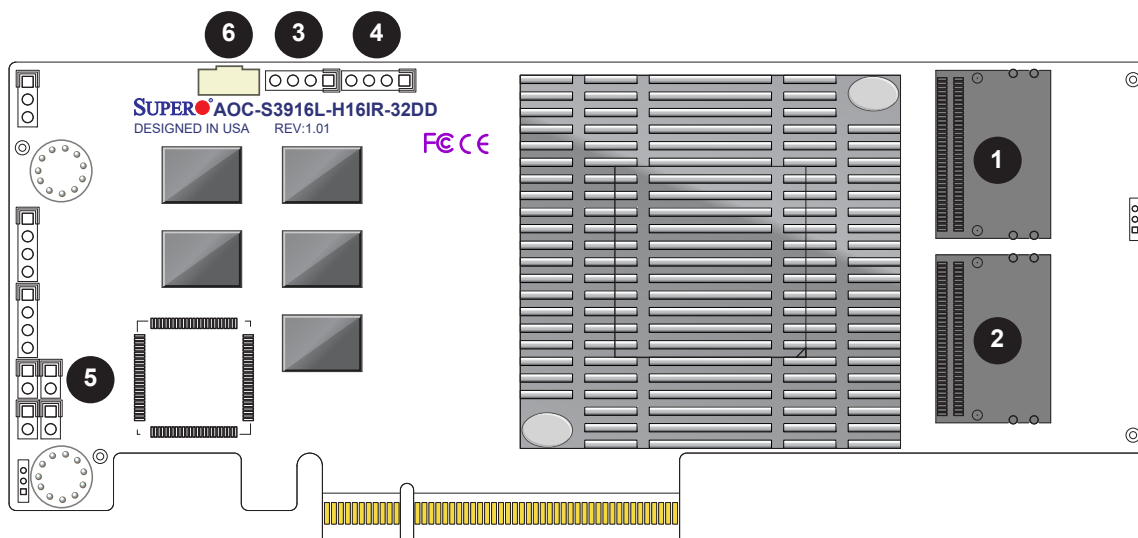
The universal asynchronous receiver/transmitter (UART) header is located on J3 and is for engineering diagnostic purposes only.

SBL_Disable Jumper

The jumper is located on JP2 and is for the manufacturer's programming purposes only.

SuperCap 9-Pin Connector

The SuperCap connector, designated J6, is used for a TFM cable connection to a SuperCap.



1. CN0 SFF-8654 Internal Connector for Ports 0-7
2. CN1 SFF-8654 Internal Connector for Ports 8-15
3. Serial Debug UART Header
4. UART0 Header
5. SBL_Disable Jumper
6. SuperCap 9-pin Connector

2.4 Front LED Indicators

PSoC Heartbeat LED

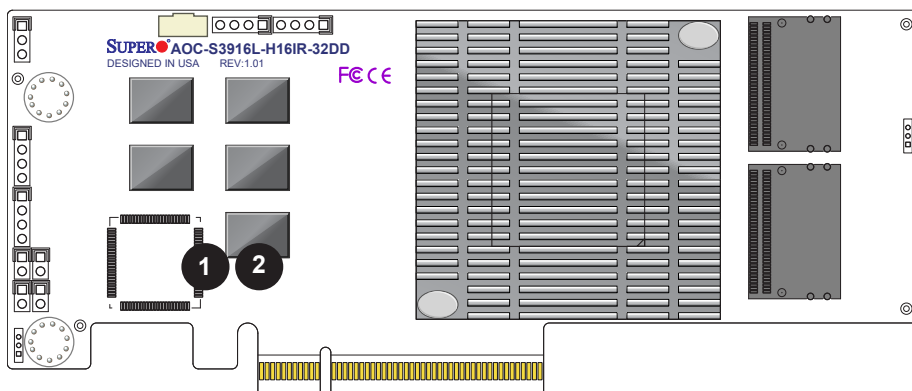
The PSoC Heartbeat LED is located at D7 on the add-on card. When D7 is blinking, the system is functioning normally. See the table below for more information.

System Heartbeat LED Status	
Color/State	Definition
Green: Blinking	System: Normal
Off	Power failure on board

ONFI Activity LED

The ONFI Activity LED is located at D6 on the add-on card. When D6 is on, the Cache Offload from DDR4 memory to NAND Flash or Restore Operation from NAND Flash to DDR4 memory is active. See the table below for more information.

ONFI Activity LED Status	
Color/State	Definition
Green: Solid	ONFI: Cache Offload/Restore Operation is in progress



1. PSoC Heartbeat LED
2. ONFI Activity LED

2.5 Rear LED Indicators

System Error LED

The System Error LED is located at D4 on the add-on card. When D4 is illuminated, a fault has occurred with the controller chip. See the table below for more information.

System Error LED Status	
Color/State	Definition
Red: Solid	Controller: Fault
Off	Controller: Normal

Overtemp LED

The Overtemp LED is located at D12 on the add-on card. When D12 is on, the controller chip temperature exceeds the threshold for the operating temperature. See the table below for more information.

Overtemp LED Status	
Color/State	Definition
Yellow: Solid	Controller: Overheat

EPAK_FLT LED

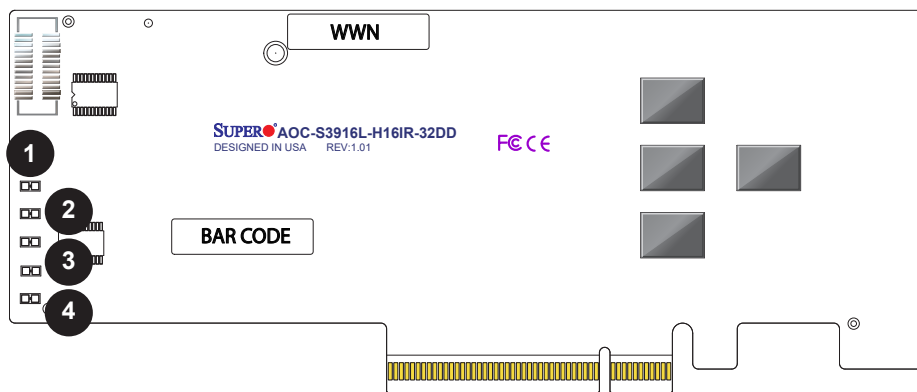
The EPAK_FLT LED is located at D10 on the add-on card. When D10 is illuminated, a fault or overheated temperature has occurred with the SuperCap power module. See the table below for more information.

EPAK_FLT LED Status	
Color/State	Definition
Yellow: Solid	SuperCap: Overheat or Fault
Off	SuperCap: Normal

System Heartbeat LED

The System Heartbeat LED is located at D3 on the add-on card. When D3 is blinking at 1Hz, the controller is functioning normally. See the table below for more information.

System Heartbeat LED Status	
Color/State	Definition
Green: Blinking	Controller: Normal
Off	Power failure on controller



1. System Heartbeat LED
2. Overtemp LED
3. EPACK_FLT LED
4. System Heartbeat LED

Chapter 3

Installation



Note: Your system came with the adapter pre-installed as a part of an integrated solution. We do not recommend removing and reinstalling any part of your system components. However, if you do need to remove or re-install a system component, including this add-on card, please follow the instructions below to ensure proper system setup. Also, be sure to remove the power cord first before adding, removing, or changing any hardware components to avoid damaging the system or components.

3.1 Static-Sensitive Devices

Electrostatic Discharge (ESD) can damage electronic components. To avoid damaging your add-on card, it is important to handle it very carefully. The following measures are generally sufficient to protect your equipment from ESD.

Precautions

- Use a grounded wrist strap designed to prevent static discharge.
- Touch a grounded metal object before removing the add-on card from the antistatic bag.
- Handle the add-on card by its edges only; do not touch its components or peripheral chips.
- Put the add-on card back into the antistatic bags when not in use.
- For grounding purposes, make sure that your system chassis provides excellent conductivity between the power supply, the case, the mounting fasteners, and the add-on card.

Unpacking

The add-on card is shipped in antistatic packaging to avoid static damage. When unpacking your component or system, make sure you are static protected.



Note: To avoid damaging your components and to ensure proper installation, always connect the power cord last, and always unplug it before adding, removing, or changing any hardware components.

3.2 Before Installation

To install the add-on card properly, be sure to follow the instructions below.

1. Power down the system.
2. Remove the power cord from the wall socket.
3. Use industry-standard anti-static equipment (such as gloves or wrist strap) and follow the instructions listed on page 3-1 to avoid damage caused by ESD.
4. Familiarize yourself with the server, motherboard, and/or chassis documentation.
5. Confirm that your operating system includes the latest updates and hot fixes.

3.3 Installing the Add-on Card (with 0.5U bracket)

Follow the steps below to install the add-on card into your system.

1. Remove the server cover and, if necessary, set aside any screws for later use.
2. Remove the add-on card slot cover. If the case requires a screw, place the screw aside for later use.
3. Position the add-on card in the slot directly over the connector, and gently push down on both sides of the card until it slides into the PCI connector.
4. Secure the add-on card to the chassis. If required, use the screw that you previously removed.
5. Attach any necessary external cables to the add-on card.
6. Replace the chassis cover.
7. Plug the power cord into the wall socket, and power up the system.

Chapter 4

Configuring the Broadcom® MegaRAID® Setting

This chapter provides instructions on how to configure MegaRAID® settings for the Broadcom® 3908 and 3916 SAS controllers. If you do not wish to configure MegaRAID® settings, skip this section and go directly to OS installation.

4.1 RAID Minimum Drive Requirements

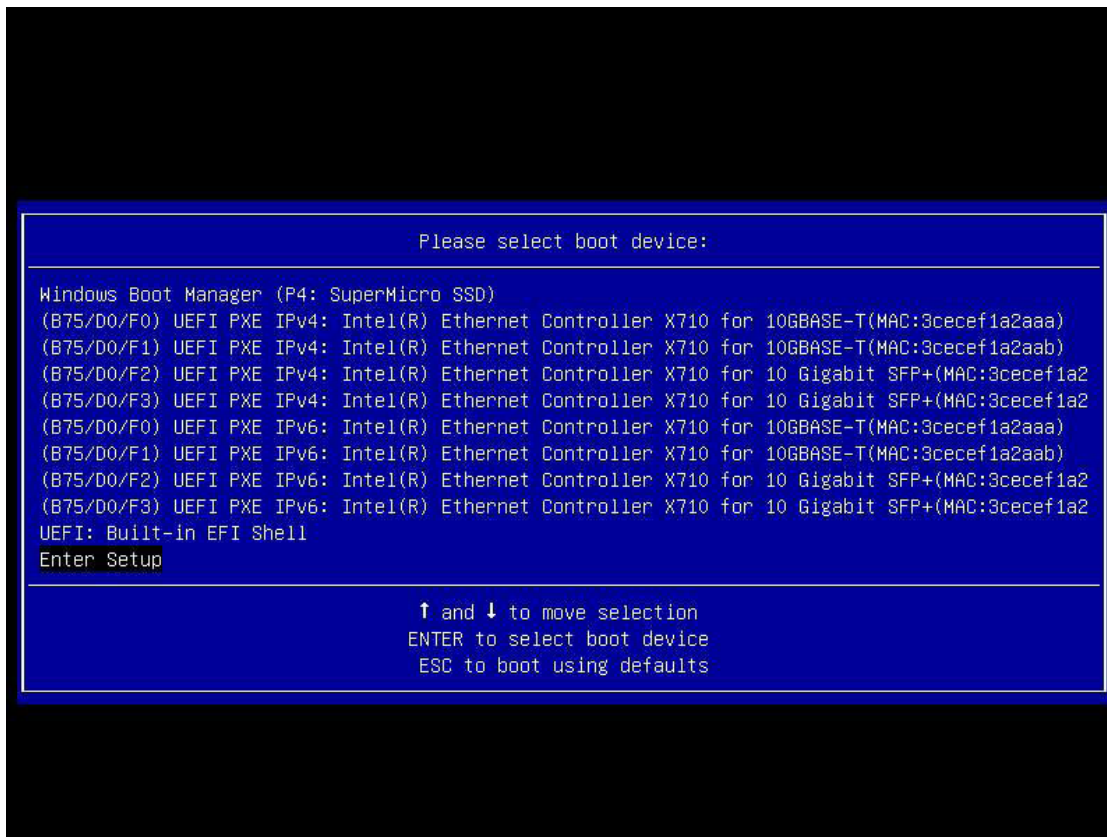
The add-on cards support up to 240 HDDs (AOC-S3908L-H8iR/AOC-S3916L-H16iR), 32 HDDs (AOC-S3916L-H16iR-32DD/AOC-S3908L-H8iR-32DD), or 16 HDDs (AOC-S3908L-H8iR-16DD) with RAID 0, 1, 5, 6, 10, 50, and 60. Use the table below to determine the minimum number of hard drives needed to set up a RAID environment.

RAID	Minimum Hard Drives
RAID0	1
RAID1	2
RAID5	3
RAID6	4
RAID10	4 (Two RAID 1 arrays)
RAID50	6 (Two RAID 5 arrays)
RAID60	8 (Two RAID 6 arrays)

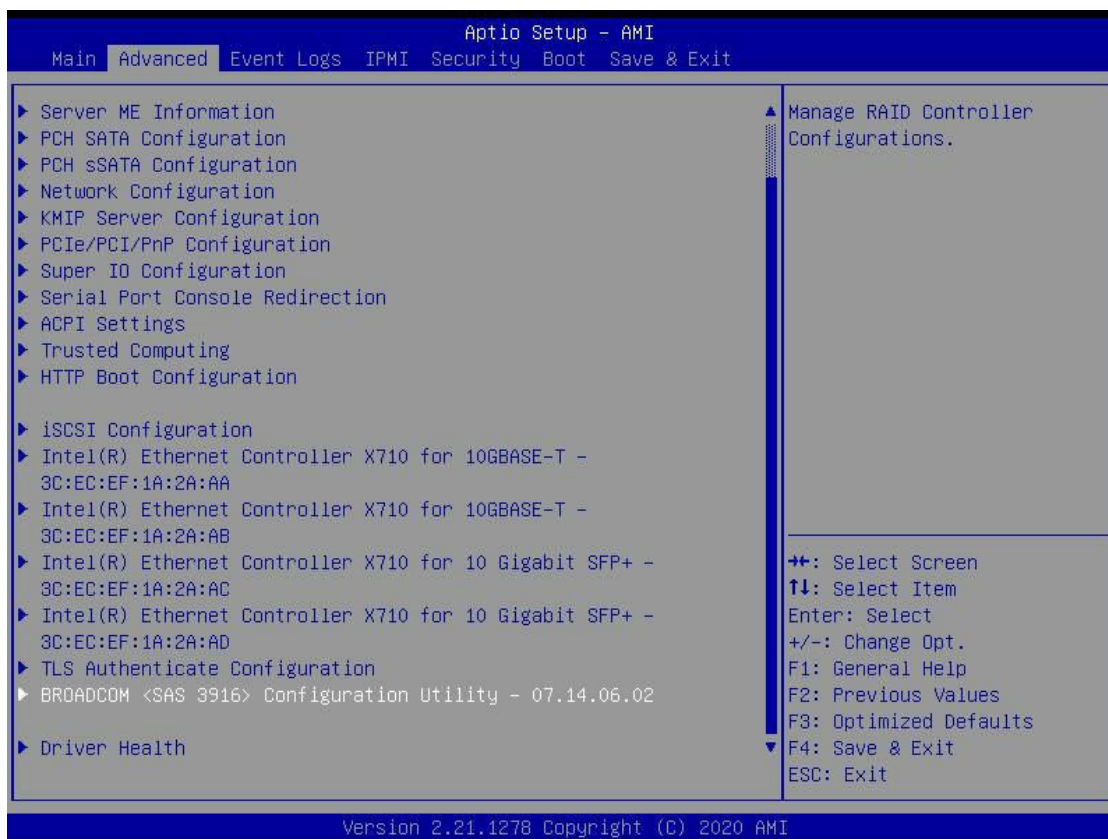
4.2 Using the Broadcom® MegaRAID® Configuration Utility

Follow the steps below to start the Broadcom MegaRAID Configuration Utility.

1. Power on the system.
2. When the following screen displays, use the up arrow and down arrow keys to move your selection to Enter Setup, then press <Enter>.

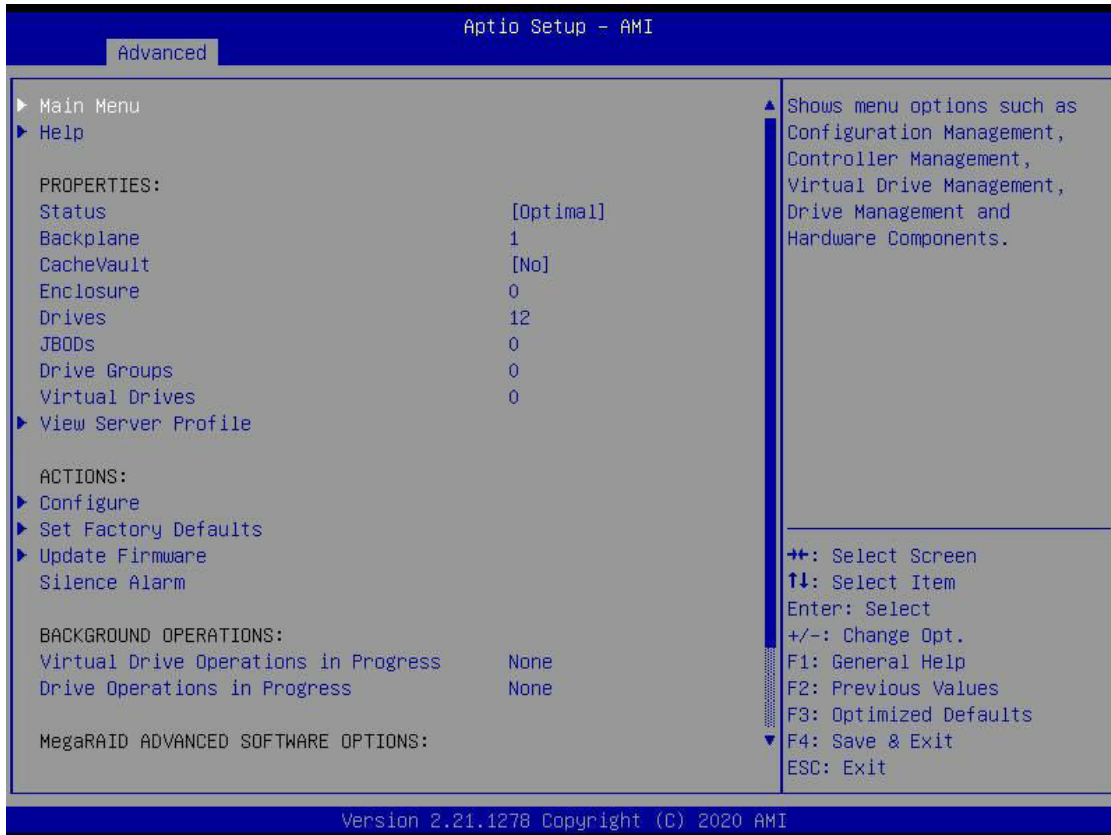


3. In the Advanced tab of the Aptio Setup display, use the up arrow and down arrow keys to move your selection to the Broadcom MegaRAID Configuration Utility, then press <Enter>.



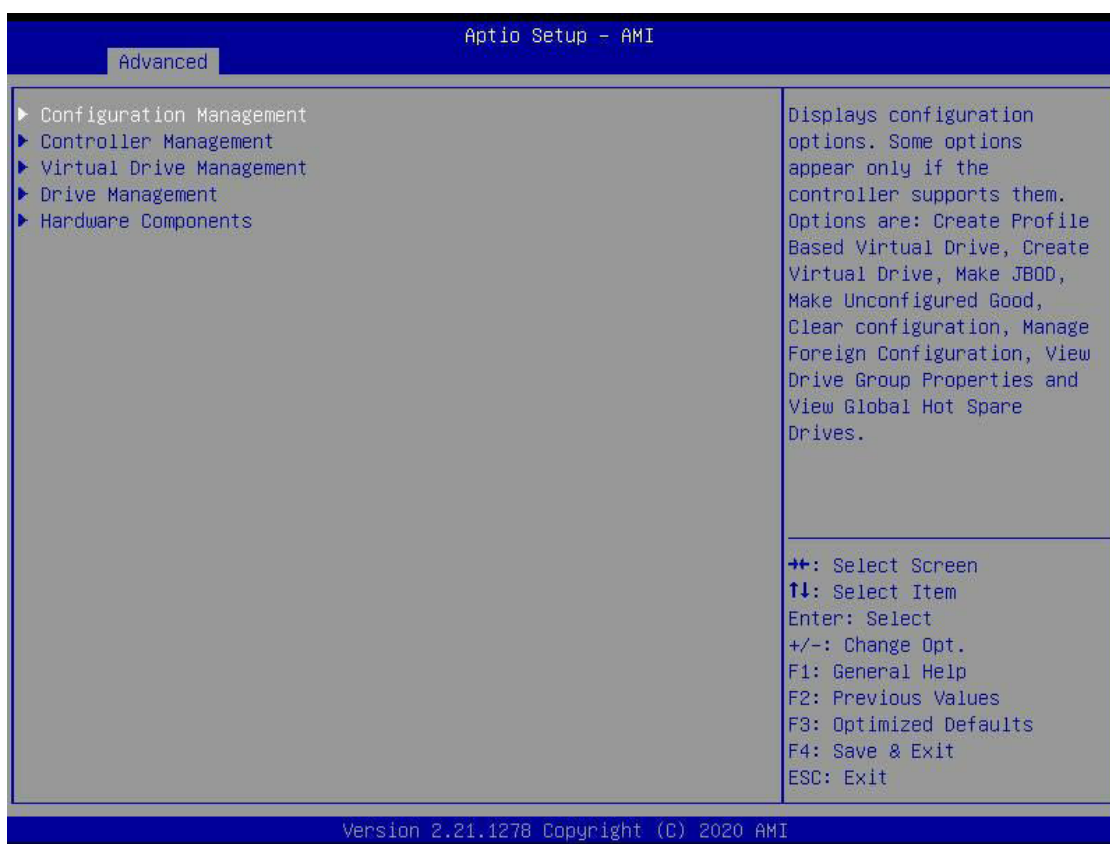
4.3 Broadcom® MegaRAID® Main Screen

In the Broadcom MegaRAID Configuration Utility, the main menu is the first option displayed. Press <Enter> to be taken to a list of configurable menus.



Press the up arrow or down arrow to select a menu. The main screen includes the following menus:

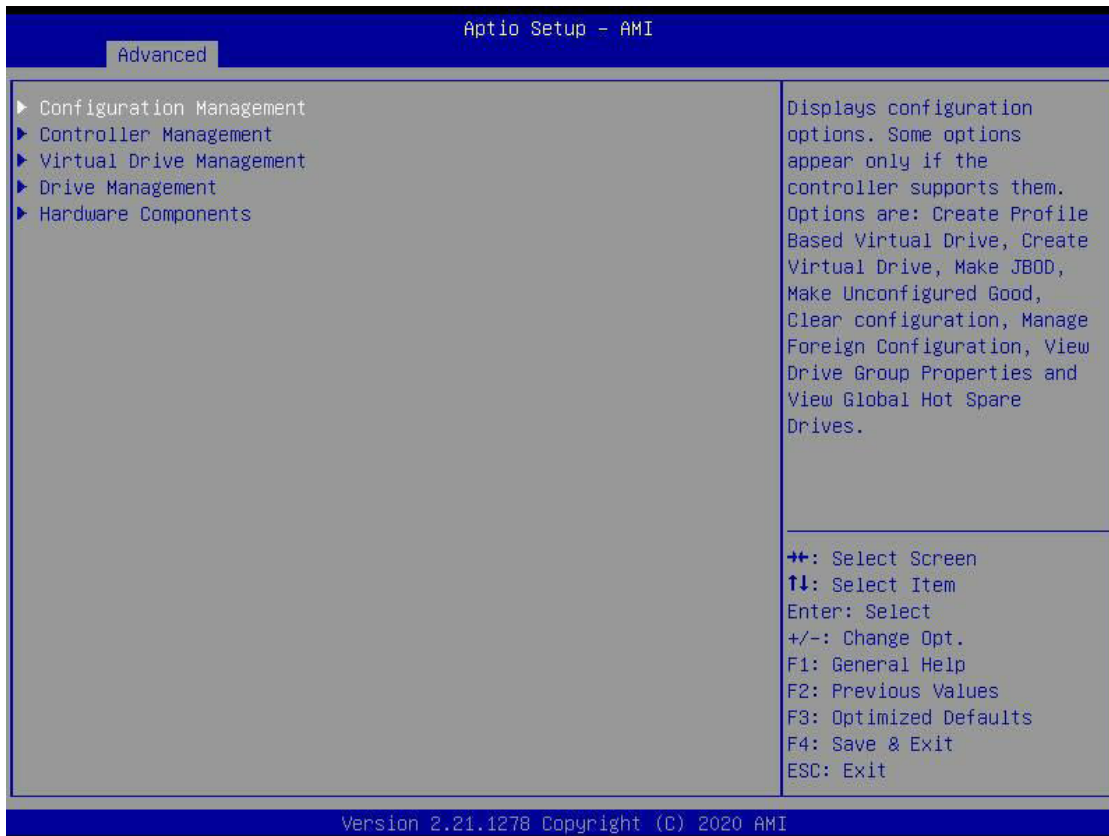
- Configuration Management
- Controller Management
- Virtual Drive Management
- Drive Management
- Hardware Components



Broadcom MegaRAID Configuration Utility Main Screen

4.4 Creating a Virtual Drive

When you enter the main menu of the MegaRAID Configuration Utility, Configuration Management is the first menu screen listed, as shown below. This screen provides information about the configuration of controllers, drive groups, and virtual drives. To select a submenu item, use the up arrow and down arrow keys. Press <Enter> to open a submenu, and <Esc> to close a submenu.



To create new virtual drives, use the down arrow key to select the Create Virtual Drive screen and press <Enter>, as shown below.




Navigate to Select RAID Level and press <Enter> when the following screen displays.

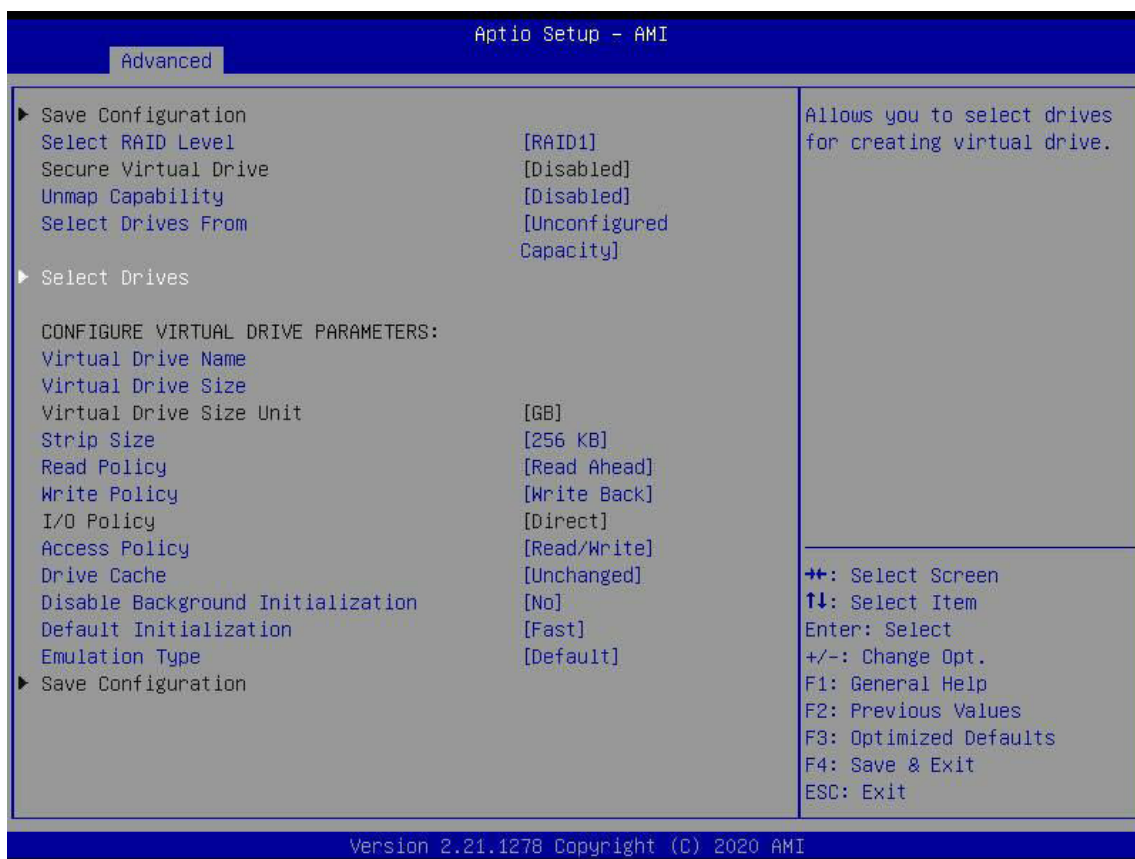


Use the up arrow and down arrow keys to select the RAID level, as shown below, and press <Enter>.

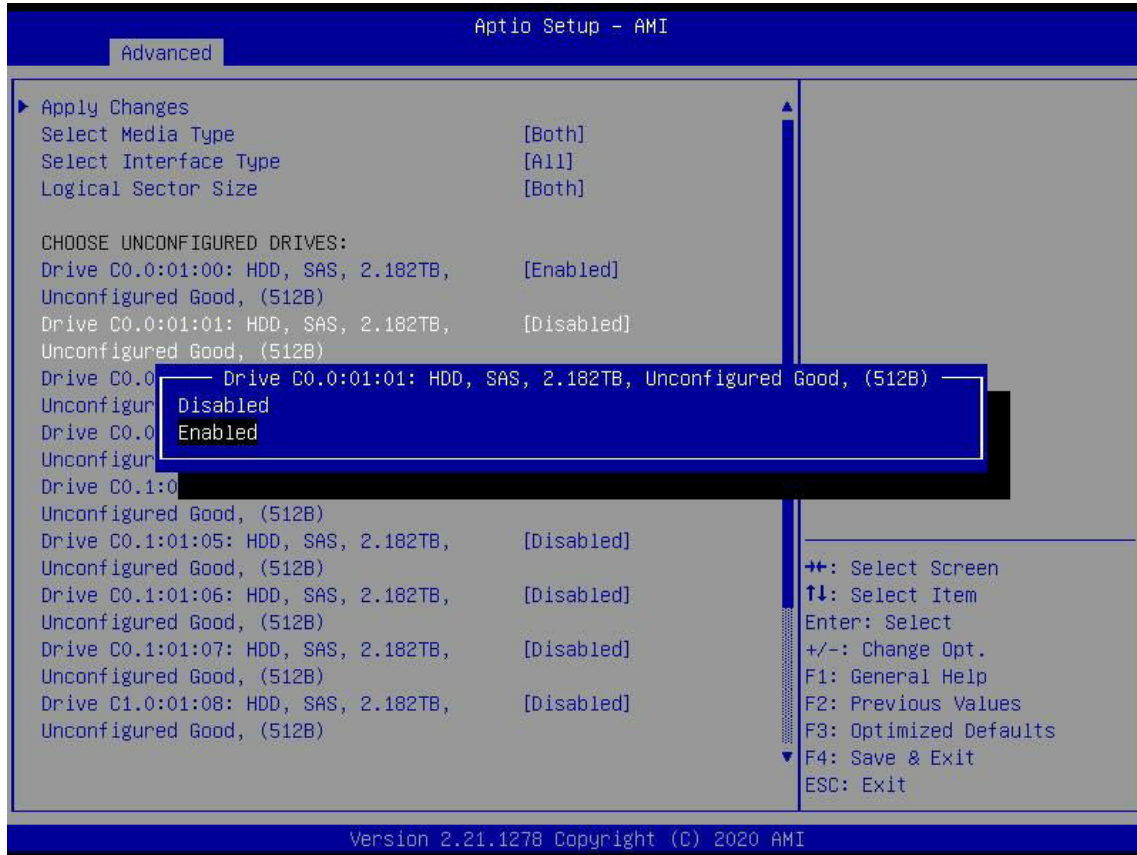


 **Note:** The corresponding RAID level(s) will display based on the number of hard drives connected to the selected controller.

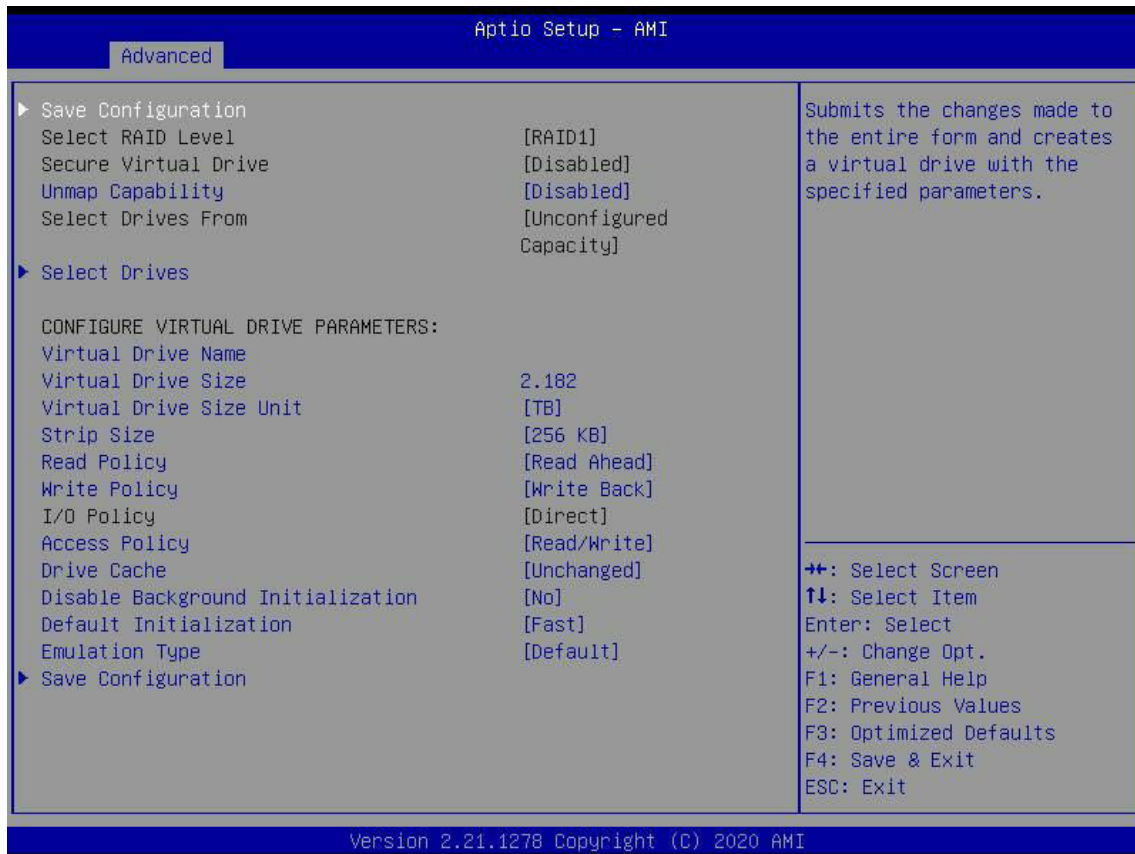
Navigate to Select Drives and press <Enter> to open the screen for selecting drives for the new virtual drive.



Use the up arrow and down arrow to navigate the list of drives and press <Enter> to select one. When the following display appears, use the up arrow or down arrow to select whether a drive will be enabled or disabled and then press <Enter>.

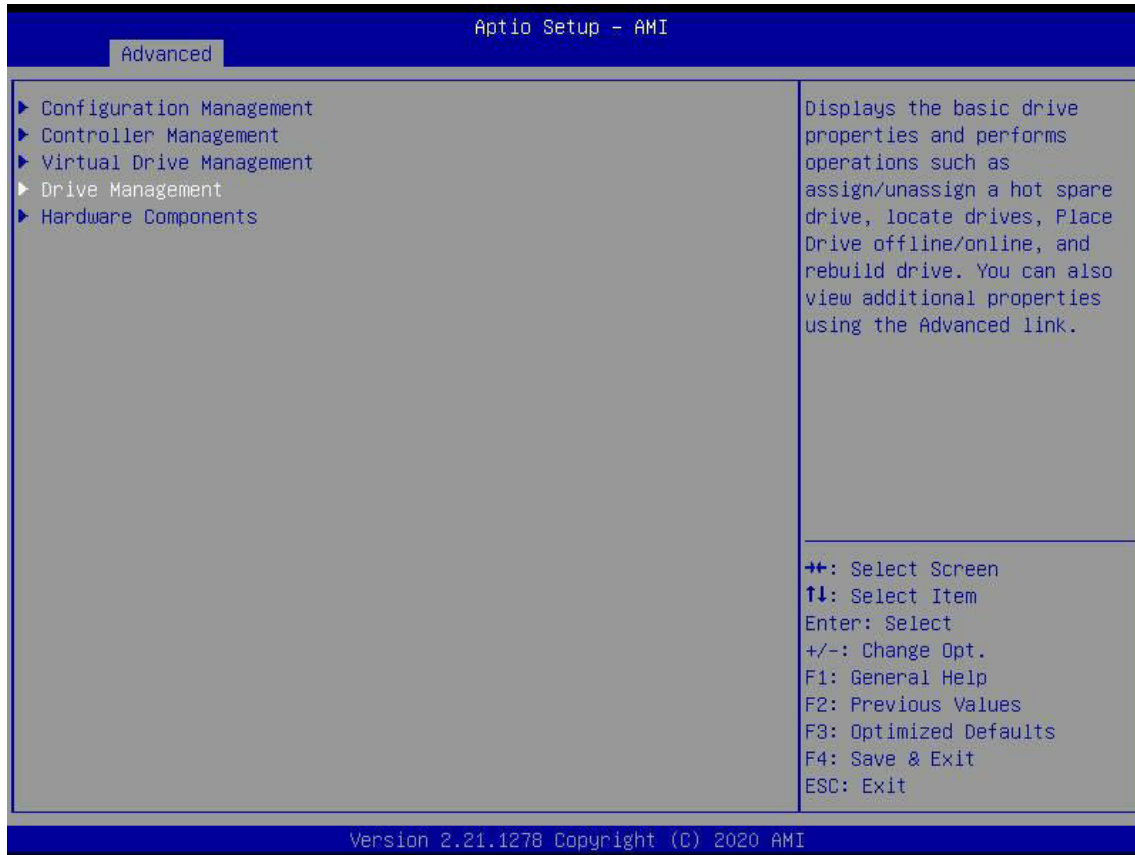


Once you are ready to create the new virtual drive, navigate to the Save Configuration option and select it. This will create a virtual drive with the parameters you have chosen.



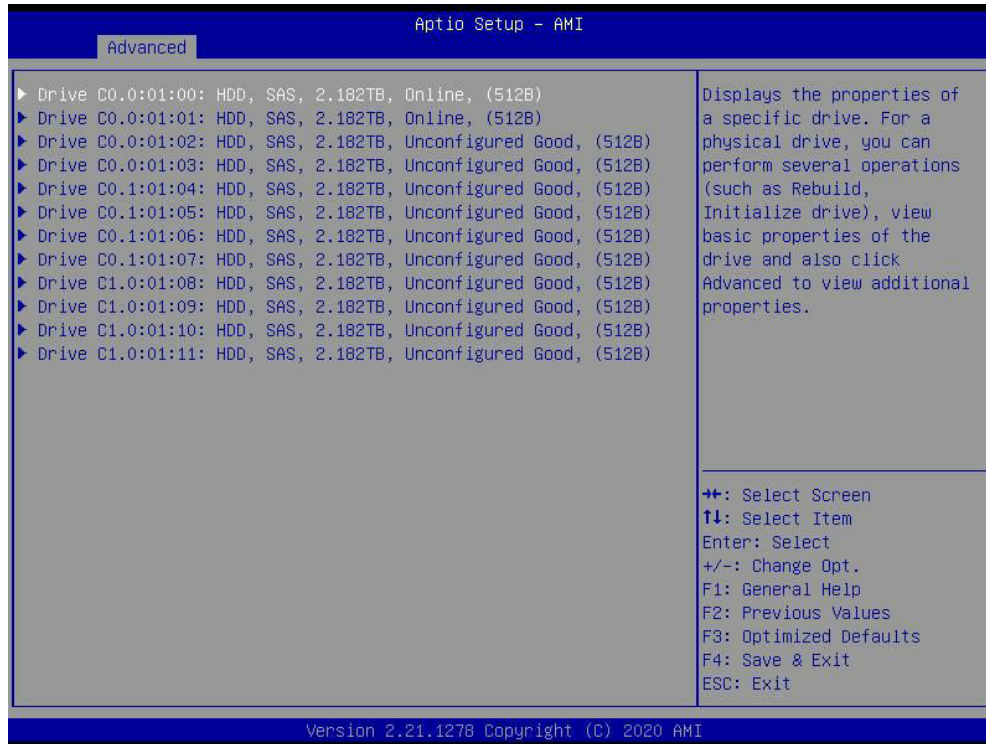
4.5 Drive Management

Press the up arrow or down arrow to select the Drive Management menu, as shown below. This screen provides information about hard drives connected to the selected controller. Information about a specific device is displayed by selecting it from the list of devices.

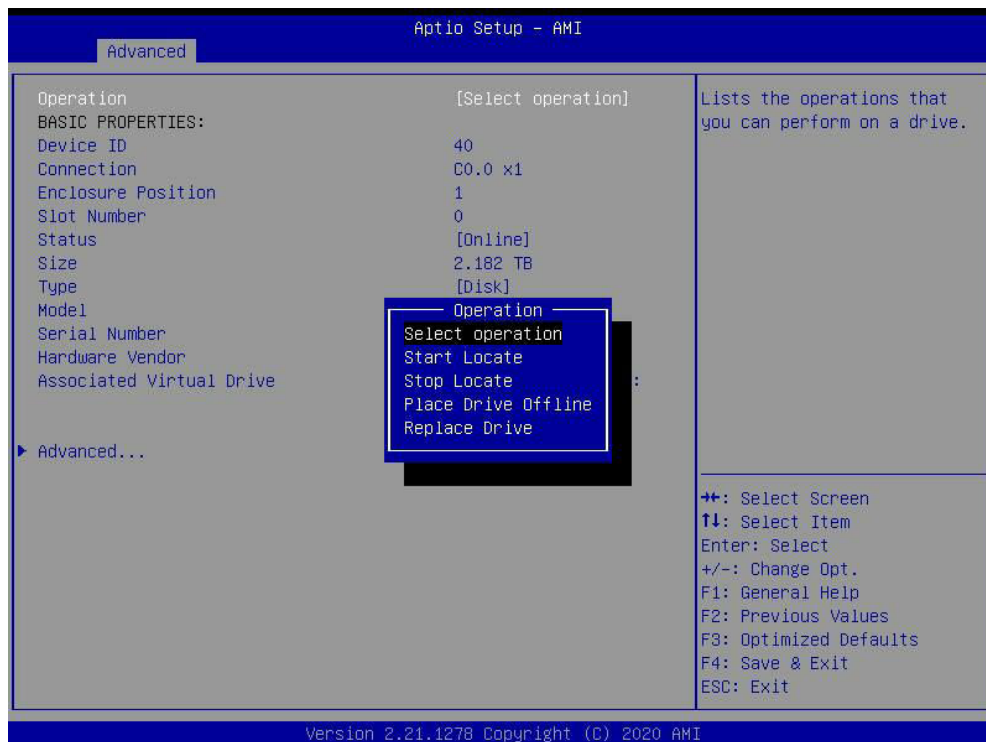


Drive Management Menu Screen

To select a device, use the up arrow or down arrow and then press <Enter>.

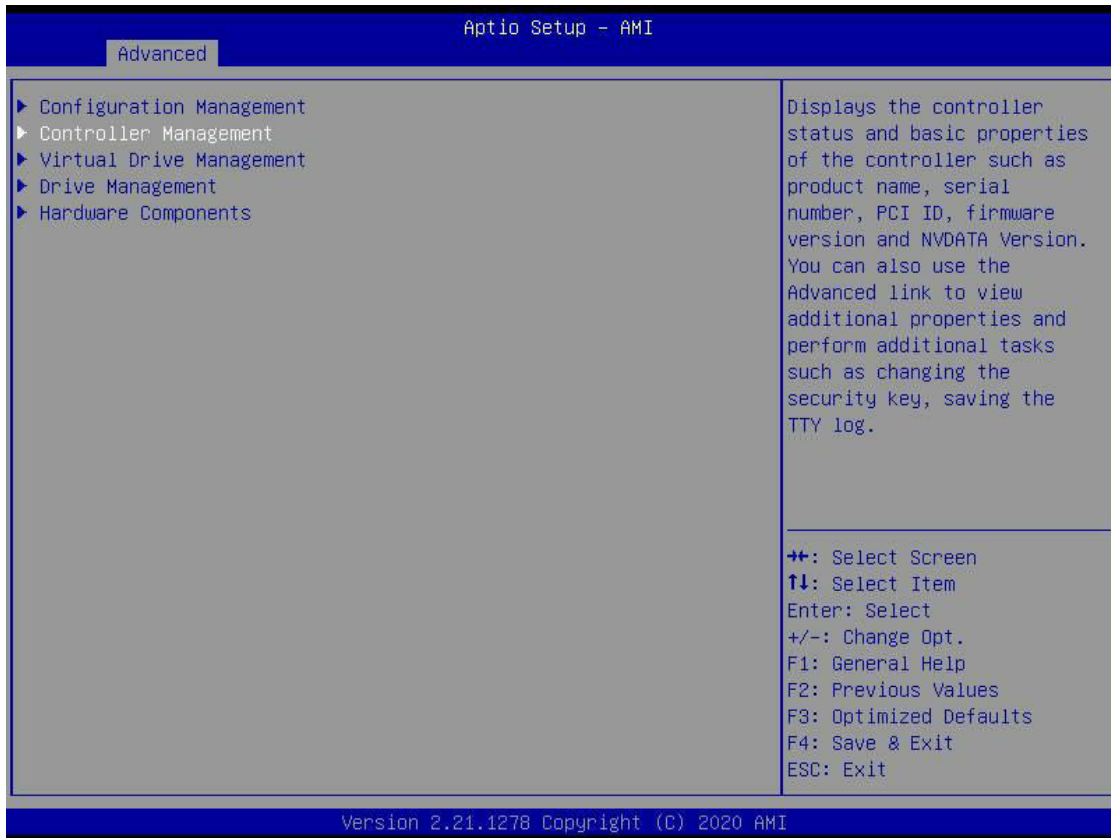


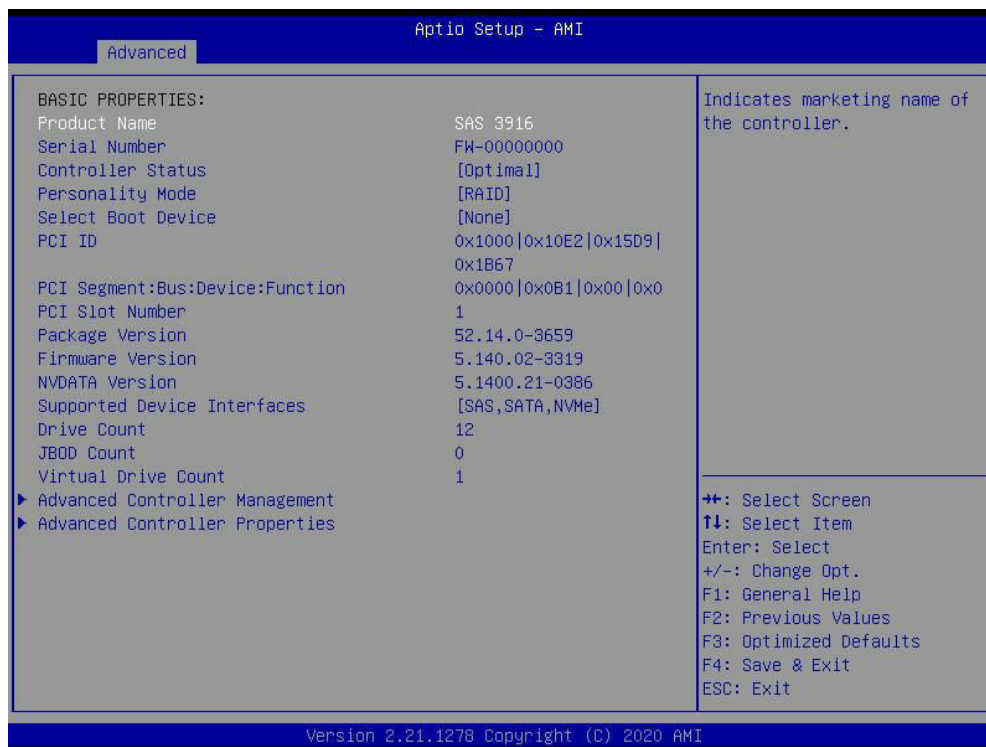
Press <Enter> to perform a command, such as rebuilding a failed drive, locating a drive, or making a drive offline, as shown below.



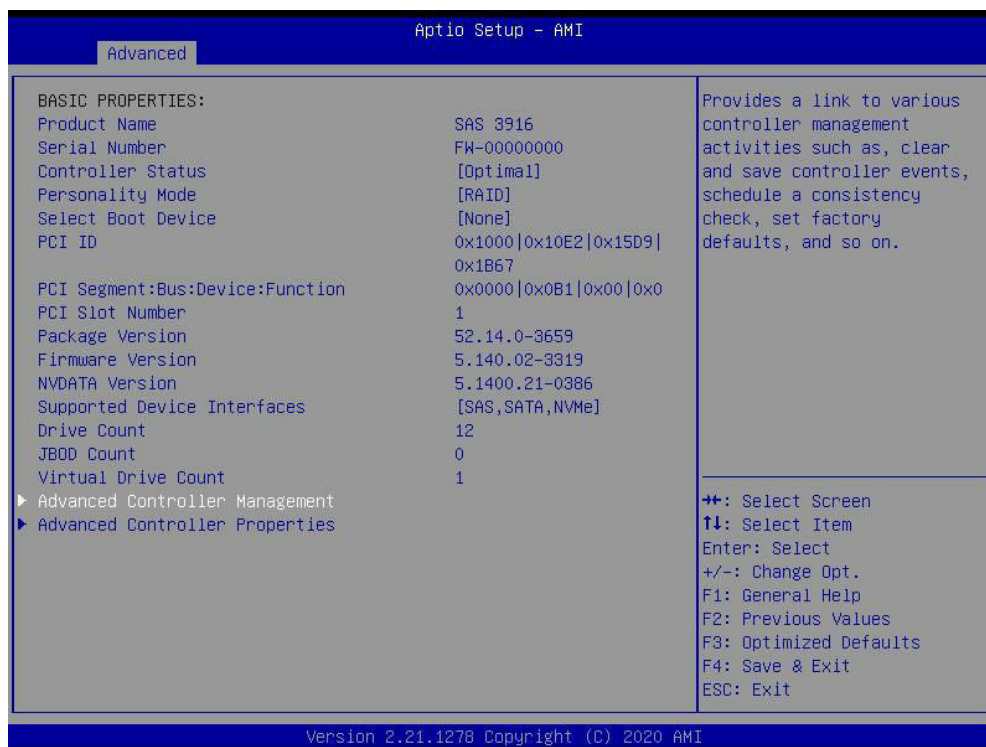
4.6 Controller Management

The Controller Management screen is the second item listed on the main menu, as shown below. This menu provides information about the settings of the selected controller.

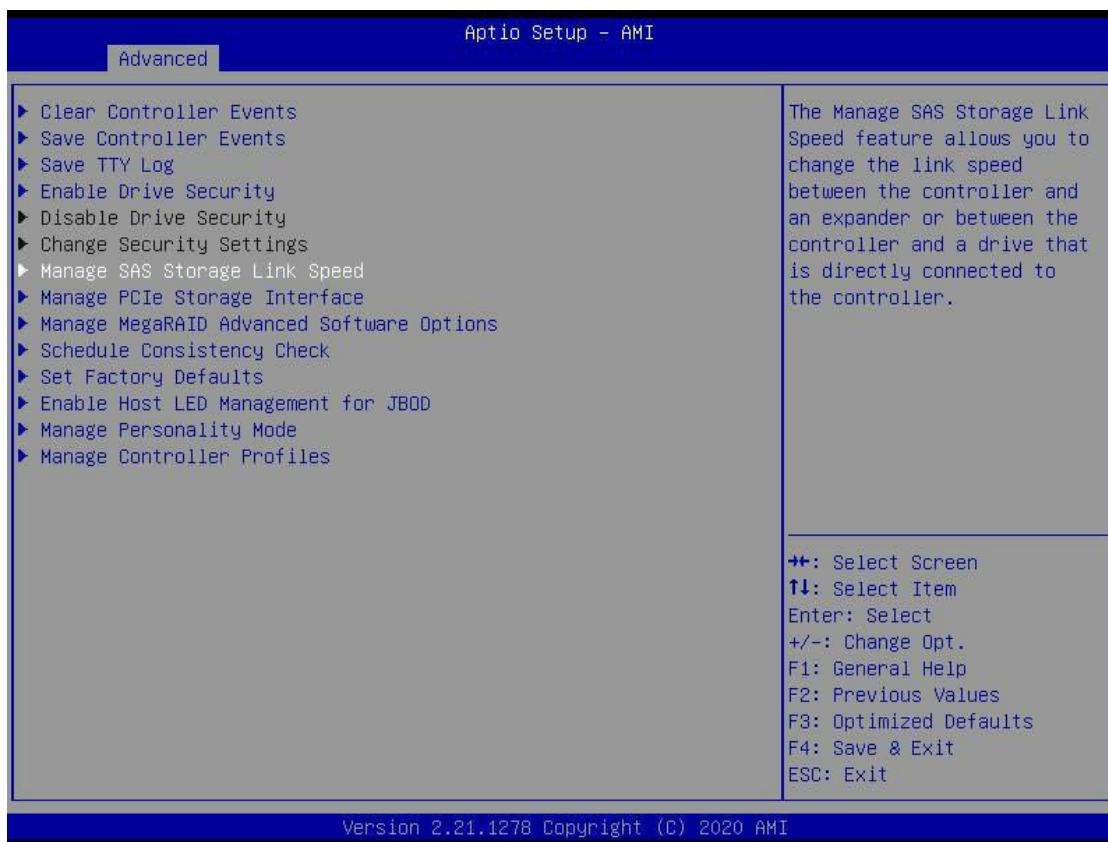




Navigate to Advanced Controller Management and press <Enter> to open the submenu.

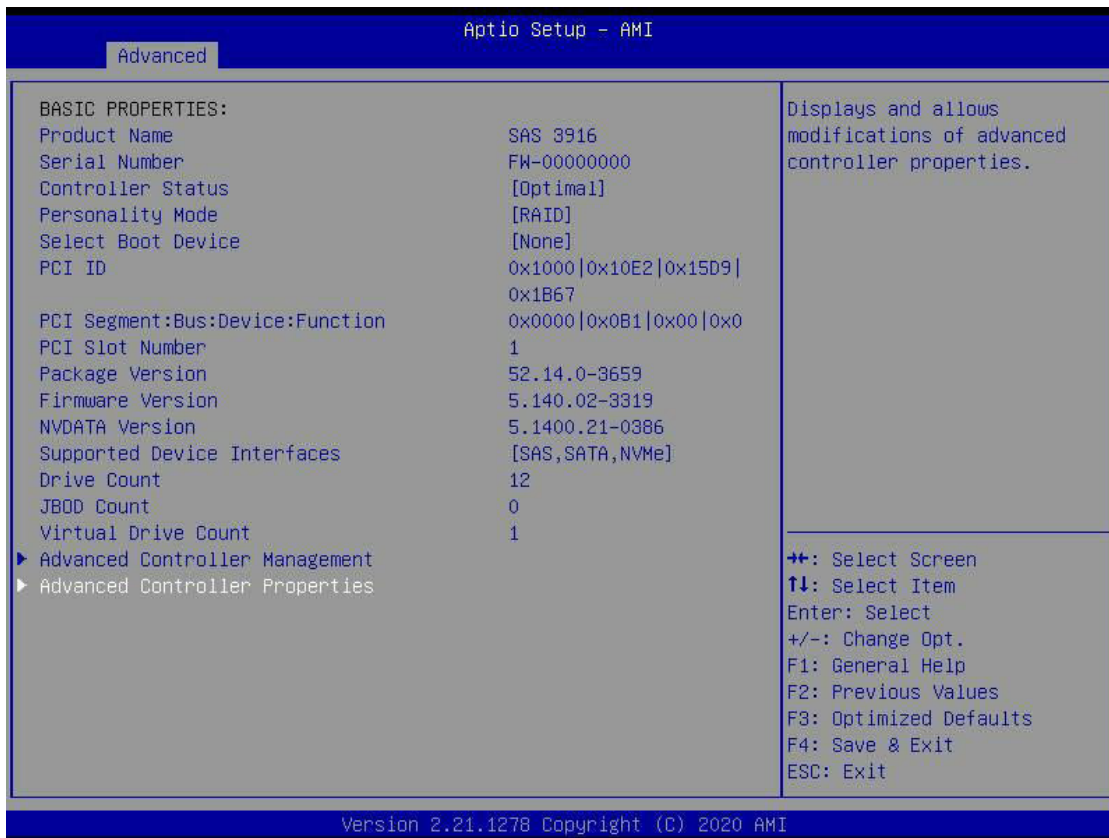


The following screen allows you to view and change settings, such as the link speed or the drive security.

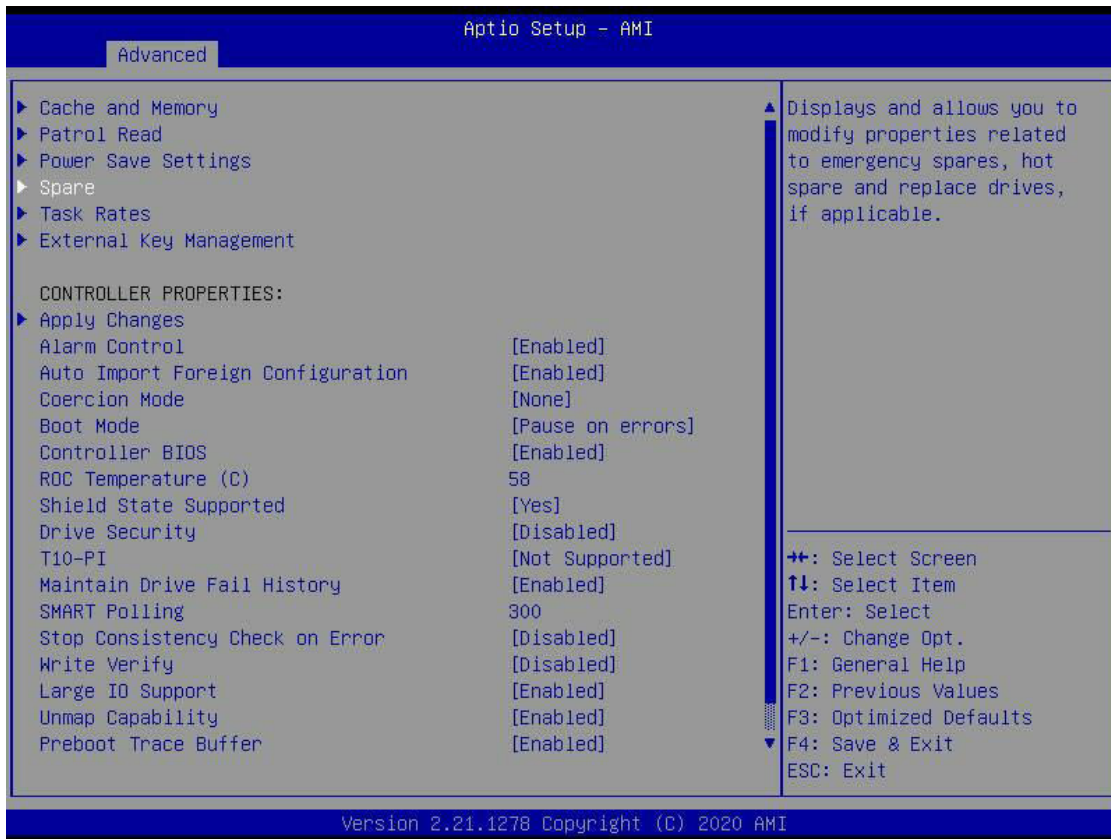


4.7 Properties

From the Controller Management menu, use the up arrow or down arrow to select the Advanced Controller Properties menu, as shown below. This menu provides information about and allows changes to the properties of the selected controller.

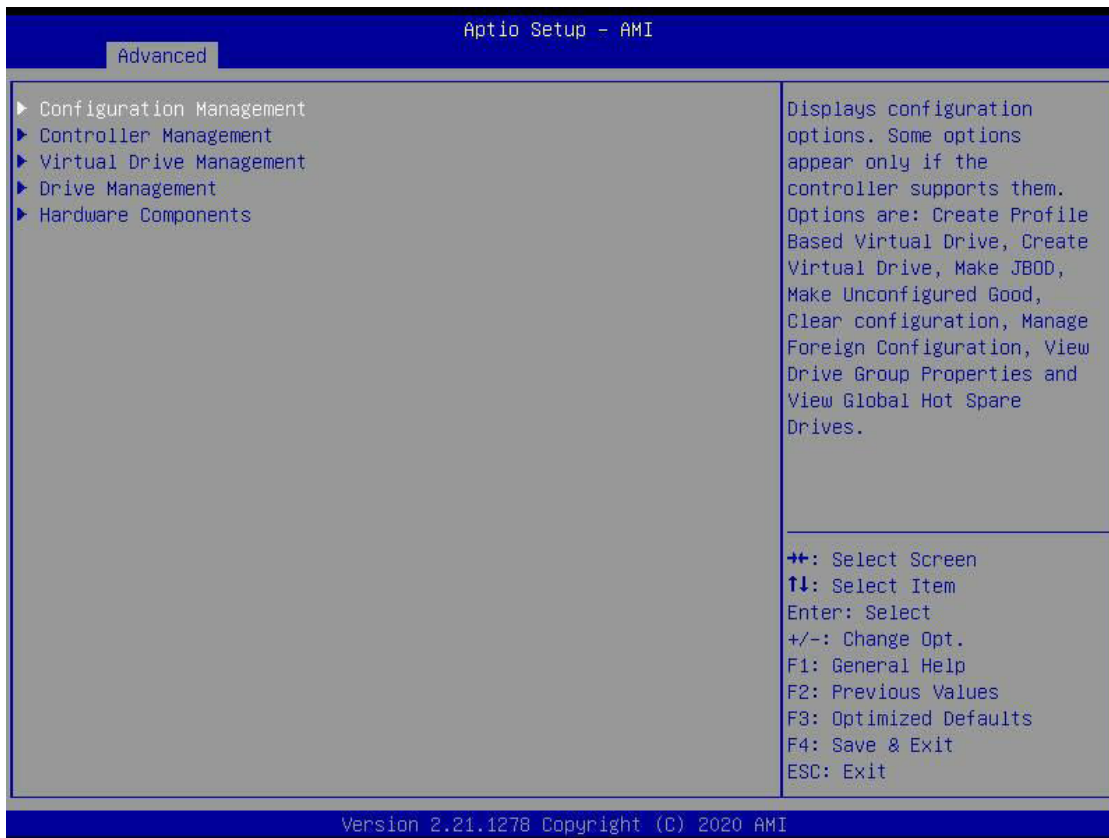


The following screen allows you to view and change properties related to power save, hot spare drives, and other items shown below.

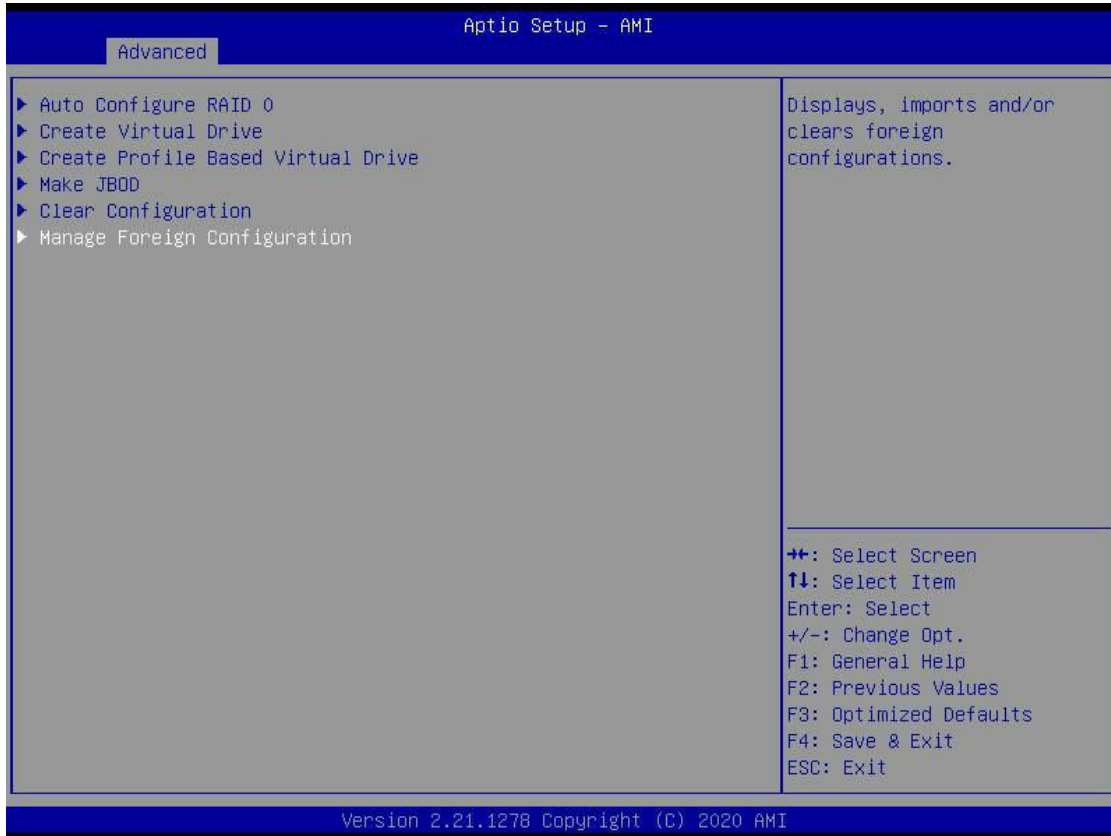


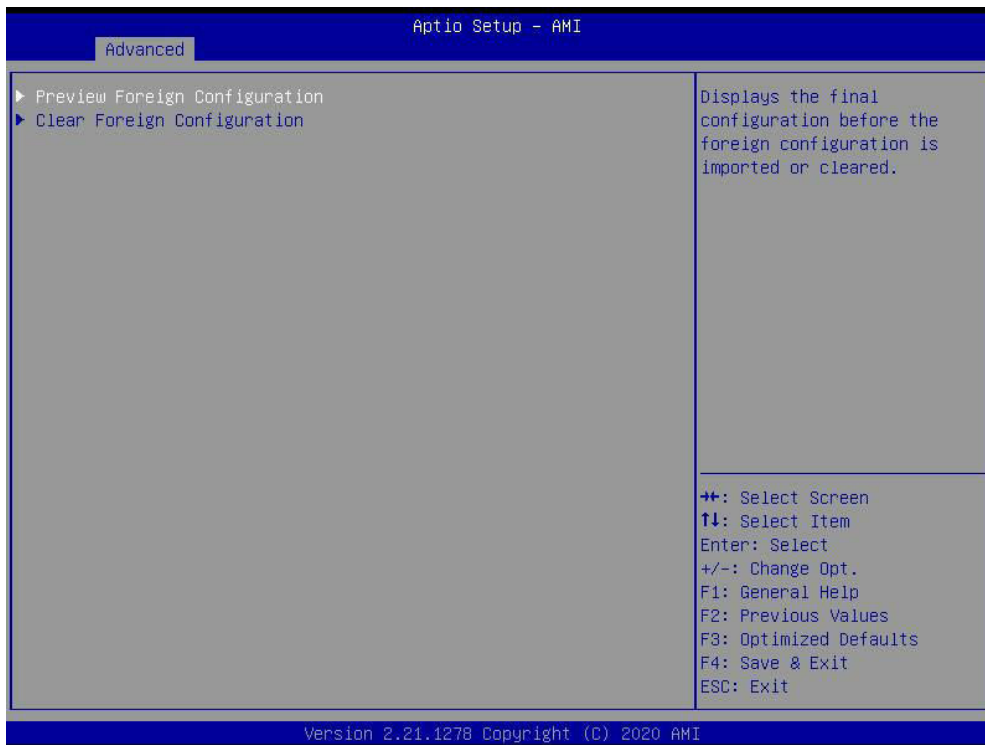
4.8 Foreign Configuration Management

The Foreign Configuration Management menu provides information about the foreign configurations and allows you to import or clear the foreign configurations. To reach it, navigate from the main menu to Configuration Management and press <Enter>.



Press the down arrow key to navigate to the Manage Foreign Configuration menu and select it, as shown below. Please note that the Manage Foreign Configuration menu displays only when a foreign configuration has been connected to the controller.





Foreign View Menu Screen



Chapter 5

MegaRAID® Controller Firmware Update Procedures

This chapter provides instructions on how to flash MegaRAID® controller firmware. Please visit our website at www.supermicro.com for more information about firmware/utilities downloads.

5.1 Flashing Firmware Using StorCLI under DOS

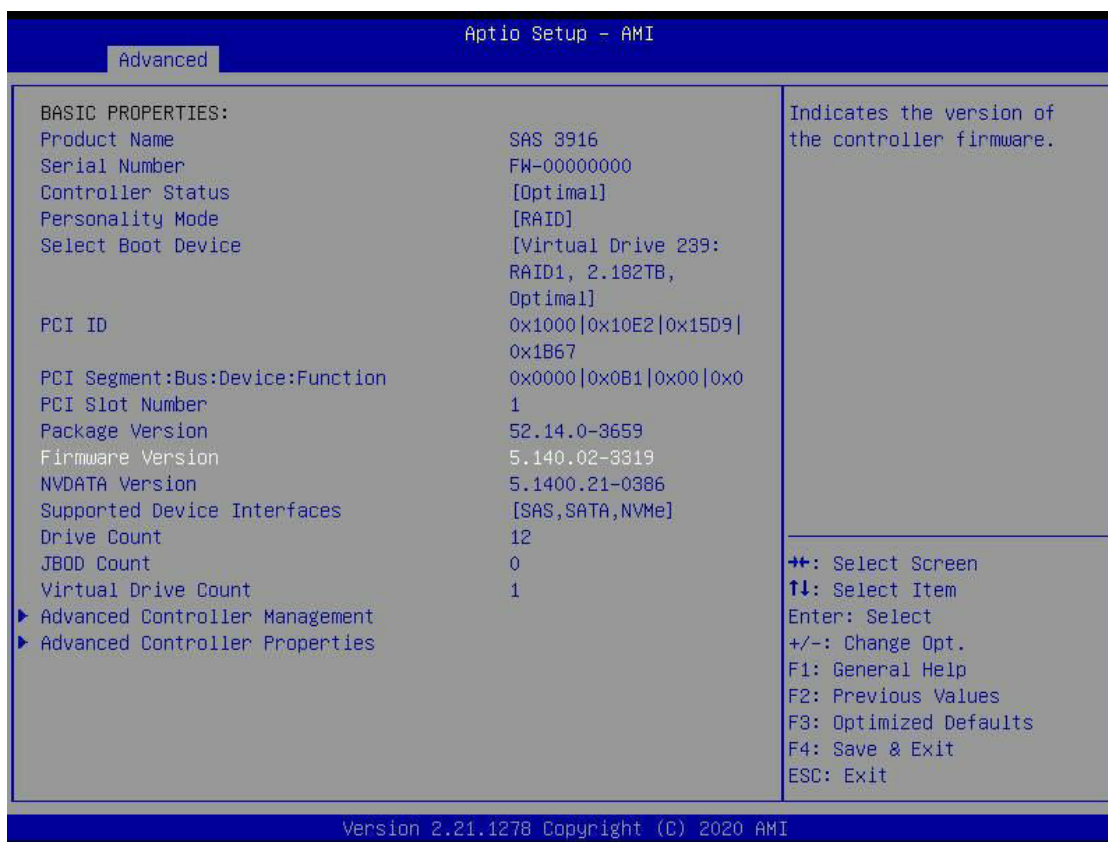
1. You need the Storcli EFI utility and ROM file (smc3908.rom/smc3916.rom) to flash the MegaRAID firmware (all included in the Firmware Upgrade package).
2. Boot to the UEFI shell and enter the USB key to apply the batch file (UPDATE.NSH) and update the firmware.

```
FS0:\AVG3916M7E3H103\UPDATE\> dir
Directory of: FS0:\AVG3916M7E3H103\UPDATE\
02/24/2021  23:11 <DIR>          8,192  .
02/24/2021  23:11 <DIR>          8,192  ..
12/16/2020  23:38              553  README.txt
12/16/2020  23:35              103  UPDATE.NSH
12/11/2020  21:13         6,422,528  3916M7E.rom
07/24/2020  07:13         14,072,704  storcli.efi
02/24/2021  23:48         1,258,296  storcli.log
           5 File(s) 21,754,184 bytes
           2 Dir(s)

FS0:\AVG3916M7E3H103\UPDATE\> UPDATE.NSH
FS0:\AVG3916M7E3H103\UPDATE\> echo -off
usage:UPDATE.NSH

FS0:\AVG3916M7E3H103\UPDATE\> storcli /c0 download file=3916M7E.rom
Download Completed.
Flashing image to adapter...
CLI Version = 007.1416.0000.0000 July 24, 2020
Operating system = EFI Shell
Controller = 0
Status = Success
Description = F/W Flash Completed. Please reboot the system for the changes to take effect
```

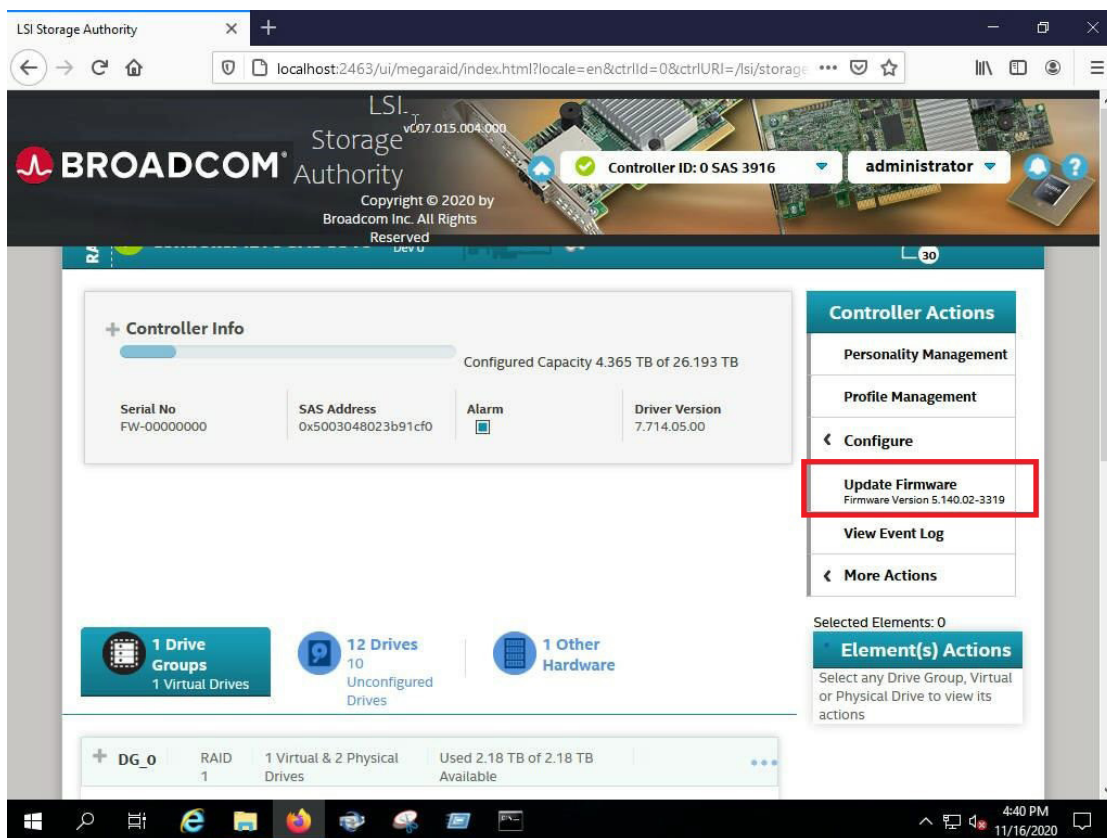
3. Reboot the system and check the firmware version in the controller banner during the boot up, as shown below.



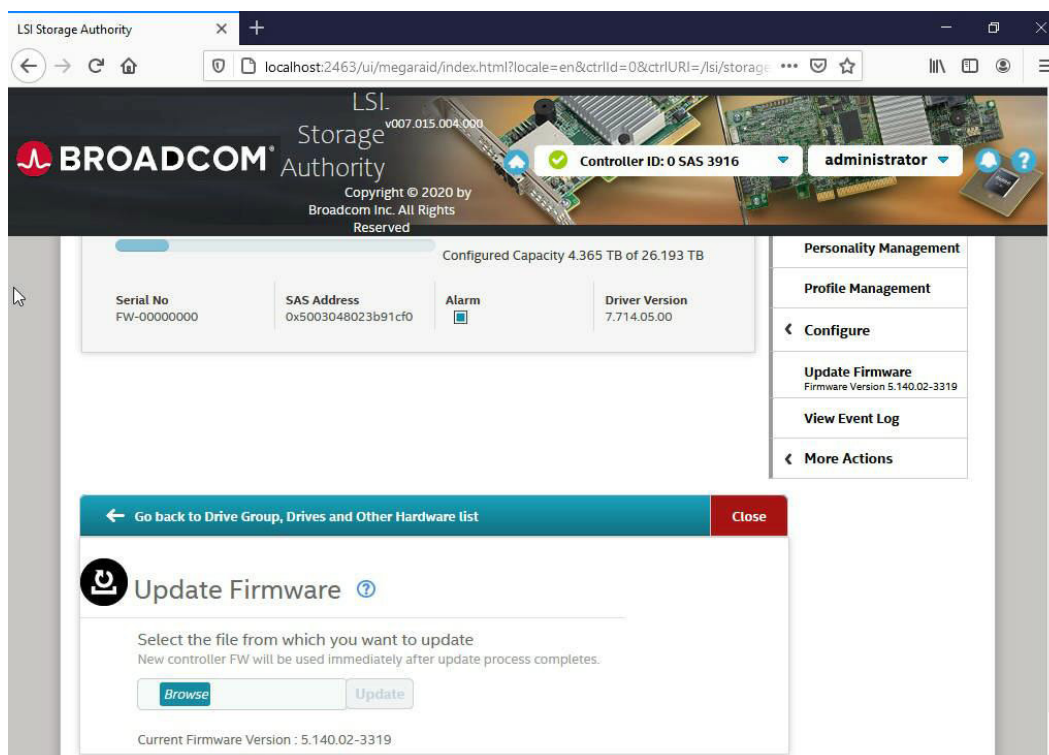
5.2 Flashing Firmware Using LSI Storage Authority

You need the LSI Storage Authority software and ROM file (smc3908.rom/smc3916.rom) to flash the MegaRAID firmware. Follow the steps below to use the LSI Storage Authority software on the following platforms: Microsoft Windows operating system and Linux operating system.

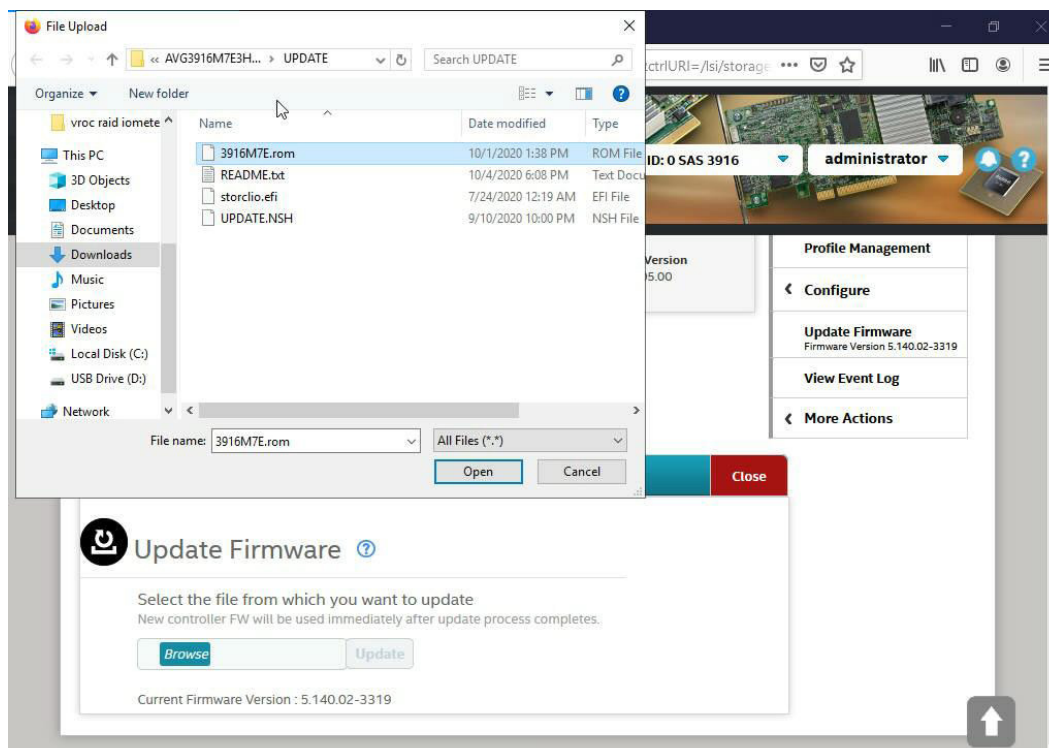
1. Open the LSI Storage Authority application.
2. After selecting the Broadcom® 3908/3916 controller to be updated, click the Update Firmware menu option as shown below.



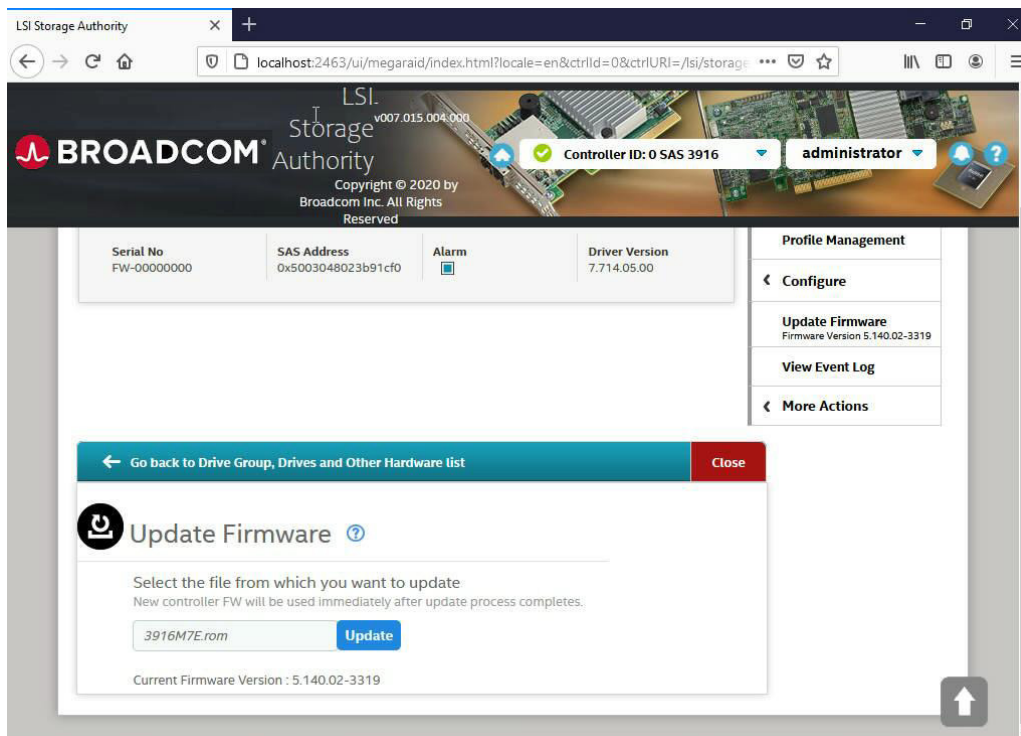
3. Press the Browse button to search for new firmware.



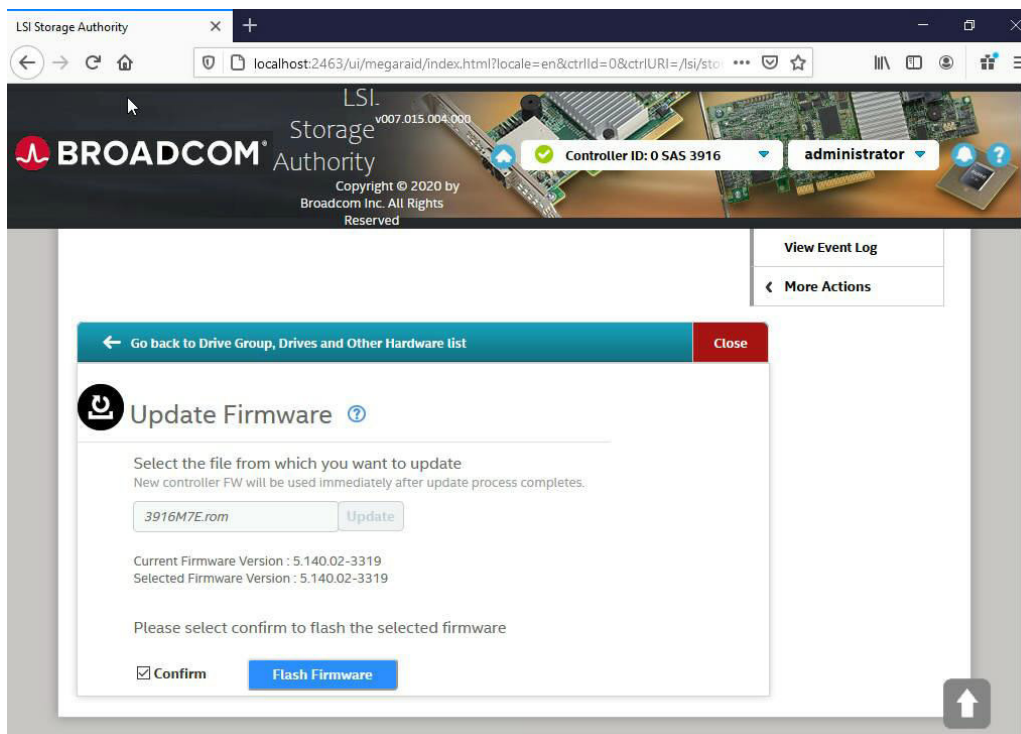
4. Select the new MegaRAID controller firmware as shown below.

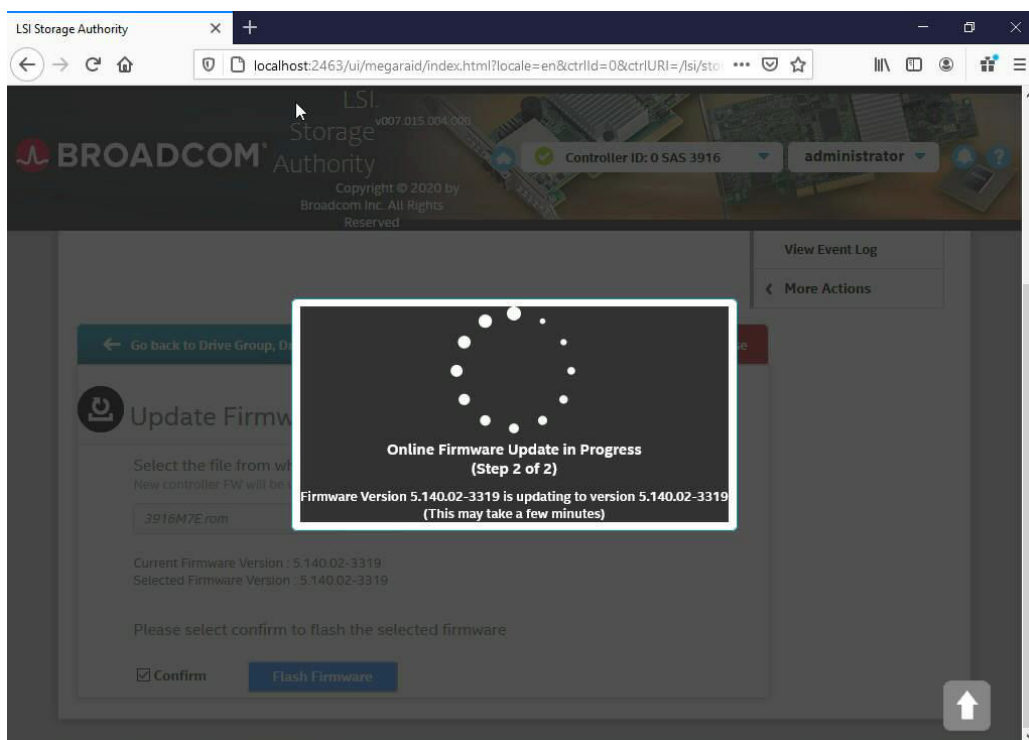


5. Click Update to continue.

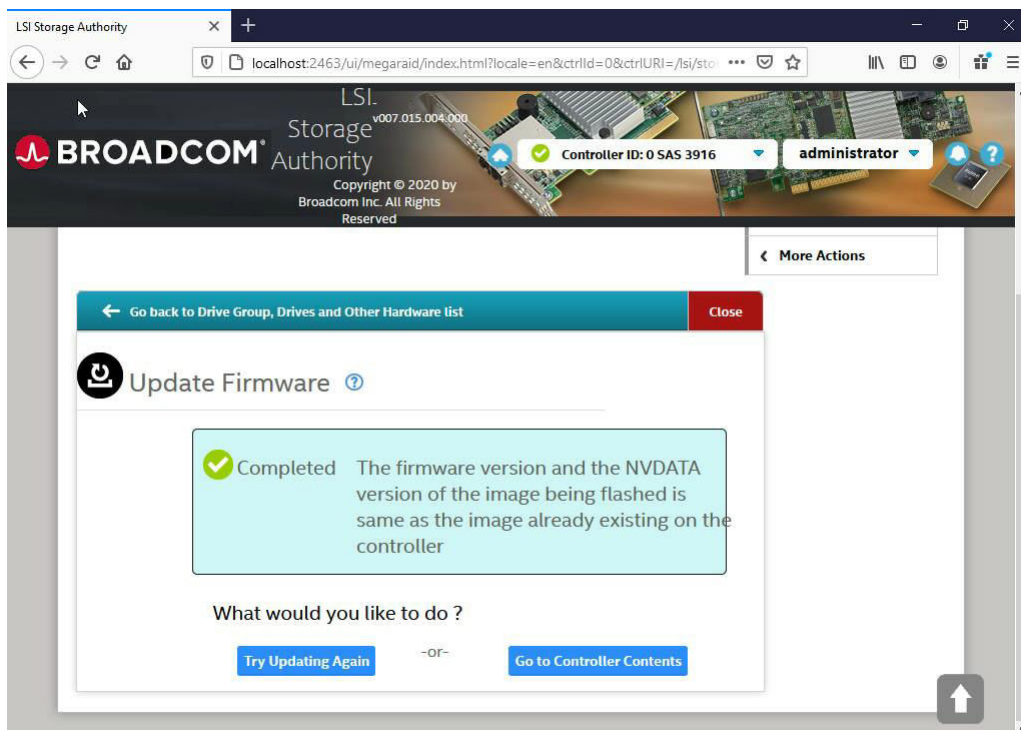


6. Check Confirm in the dialog box and click Flash Firmware to continue, as shown below.

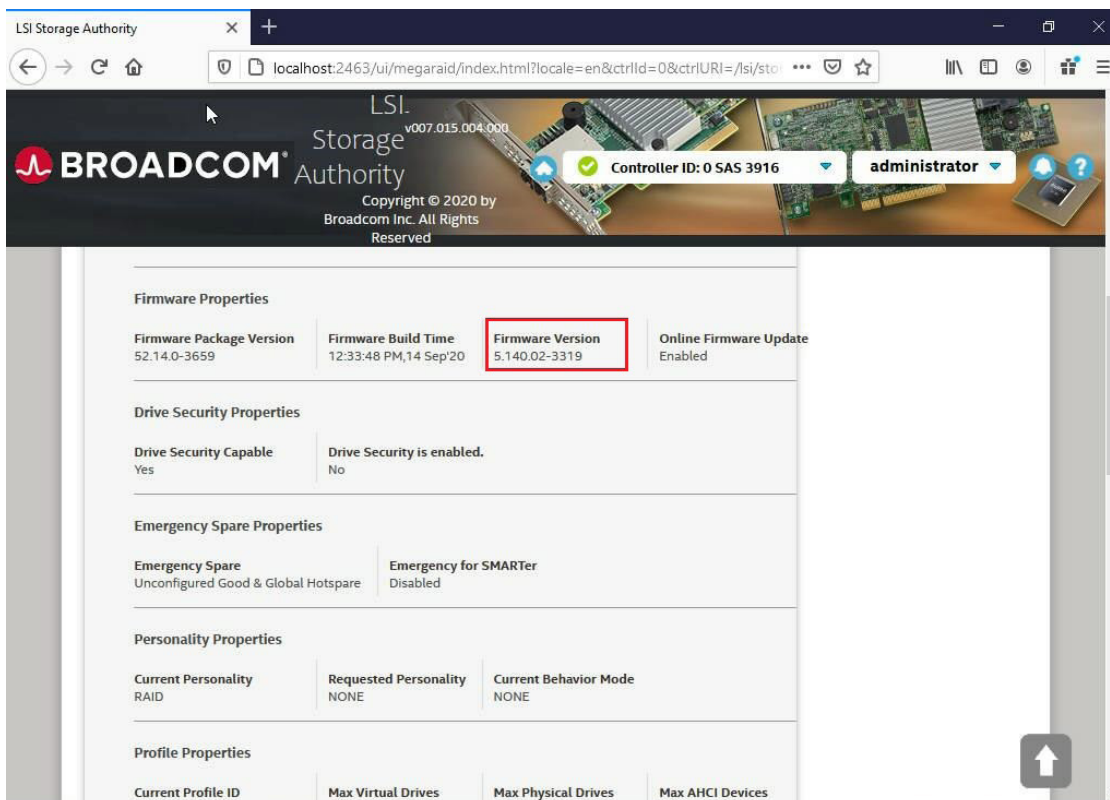




7. Do not reboot the system until the firmware update is completed, as shown below.



8. Reboot the system and check the firmware version using the LSI Storage Authority application as shown below.



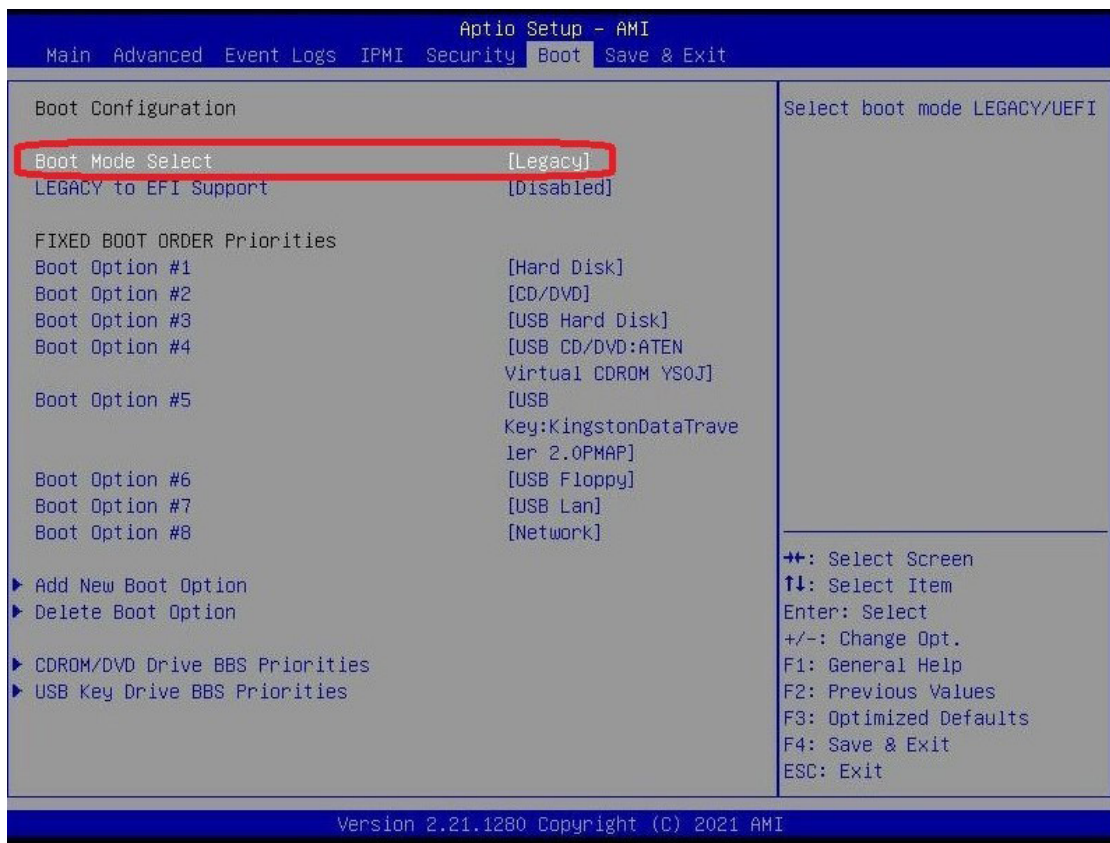
Chapter 6

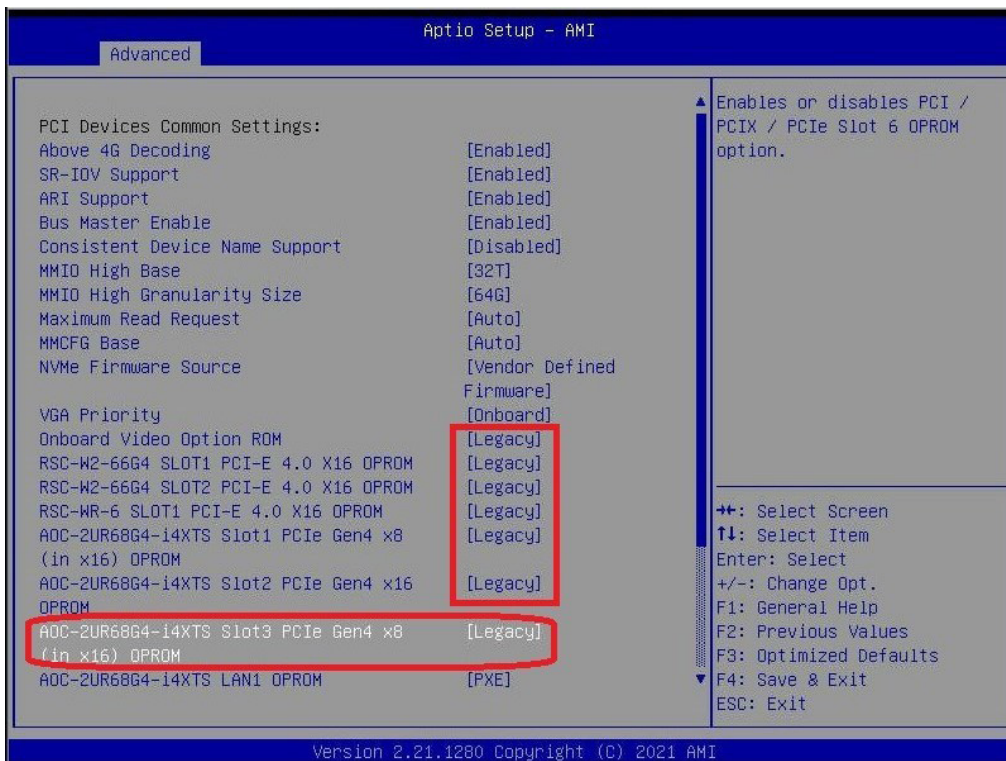
Booting

Depending on the system, motherboard, and BIOS version, use this feature to configure Boot Settings to boot as UEFI or Legacy mode.

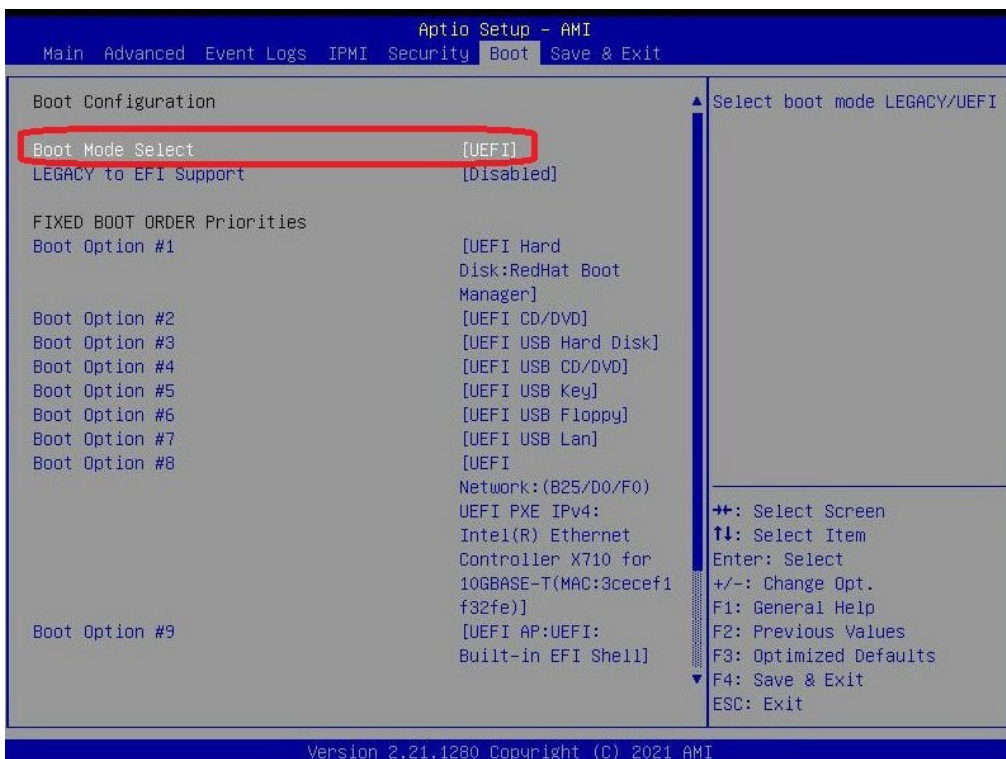
6.1 Configuring Boot Settings

1. If the boot mode changes to “Legacy”, the PCIe settings change to “Legacy”.

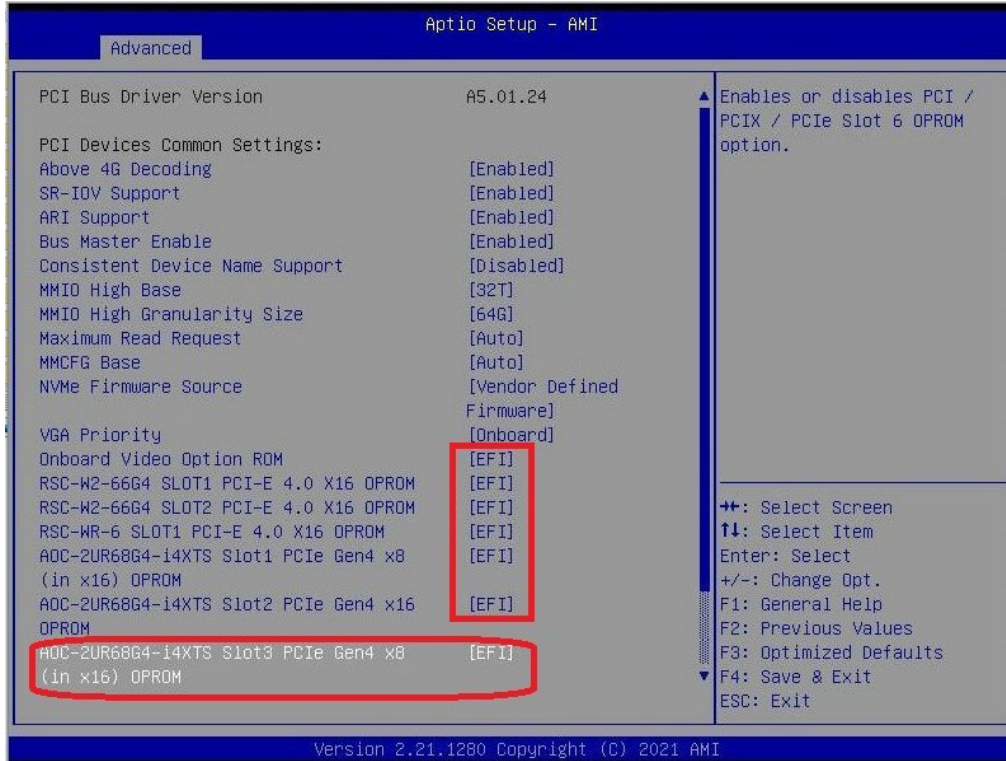




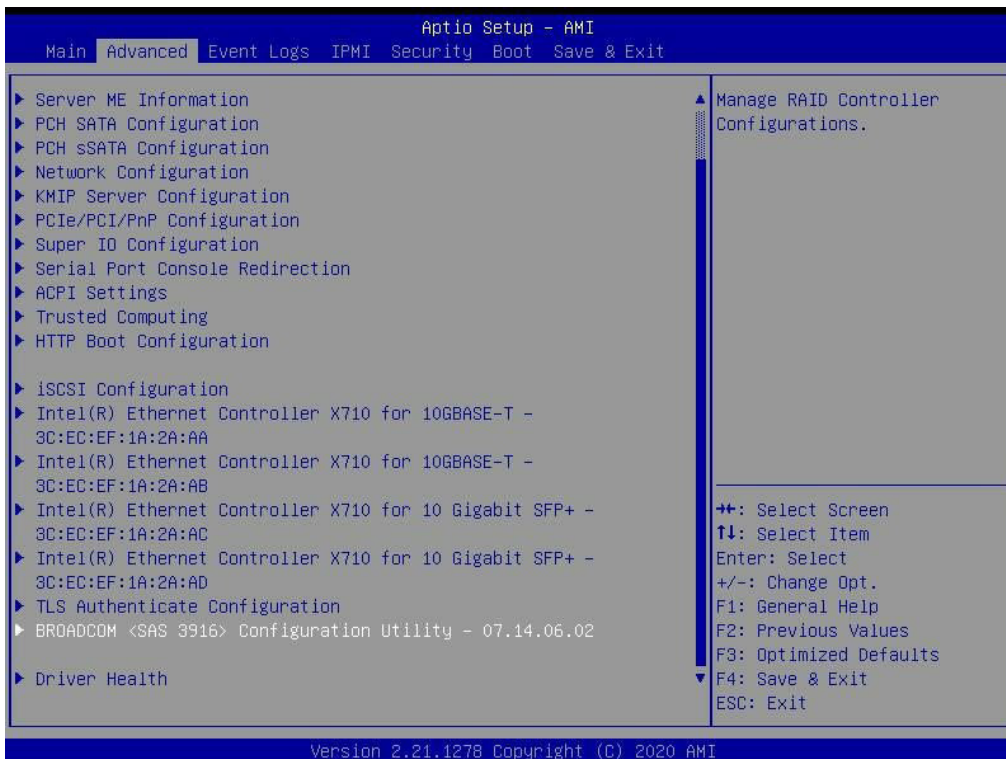
2. If the boot mode changes to “UEFI”, the PCIe settings change to “UEFI”.



3. The add-on card installed in the riser slot changes to EFI mode.



4. The controller configuration utility can only be supported under UEFI mode.



(Disclaimer Continued)

The products sold by Supermicro are not intended for and will not be used in life support systems, medical equipment, nuclear facilities or systems, aircraft, aircraft devices, aircraft/emergency communication devices or other critical systems whose failure to perform be reasonably expected to result in significant injury or loss of life or catastrophic property damage. Accordingly, Supermicro disclaims any and all liability, and should buyer use or sell such products for use in such ultra-hazardous applications, it does so entirely at its own risk. Furthermore, buyer agrees to fully indemnify, defend and hold Supermicro harmless for and against any and all claims, demands, actions, litigation, and proceedings of any kind arising out of or related to such ultra-hazardous use or sale.