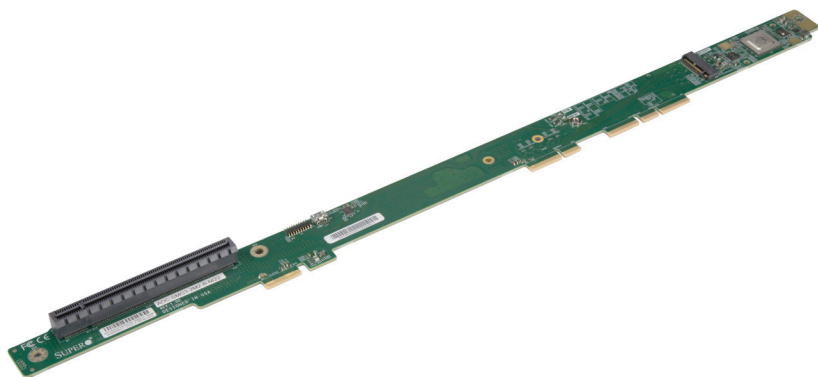




AOC-SMG3-2M2-B



User's Guide

Revision 1.0

The information in this user's manual has been carefully reviewed and is believed to be accurate. The vendor assumes no responsibility for any inaccuracies that may be contained in this document, and makes no commitment to update or to keep current the information in this manual, or to notify any person or organization of the updates. **Please Note: For the most up-to-date version of this manual, please see our website at www.supermicro.com.**

Super Micro Computer, Inc. ("Supermicro") reserves the right to make changes to the product described in this manual at any time and without notice. This product, including software and documentation, is the property of Supermicro and/or its licensors, and is supplied only under a license. Any use or reproduction of this product is not allowed, except as expressly permitted by the terms of said license.

IN NO EVENT WILL SUPER MICRO COMPUTER, INC. BE LIABLE FOR DIRECT, INDIRECT, SPECIAL, INCIDENTAL, SPECULATIVE OR CONSEQUENTIAL DAMAGES ARISING FROM THE USE OR INABILITY TO USE THIS PRODUCT OR DOCUMENTATION, EVEN IF ADVISED OF THE POSSIBILITY OF SUCH DAMAGES. IN PARTICULAR, SUPER MICRO COMPUTER, INC. SHALL NOT HAVE LIABILITY FOR ANY HARDWARE, SOFTWARE, OR DATA STORED OR USED WITH THE PRODUCT, INCLUDING THE COSTS OF REPAIRING, REPLACING, INTEGRATING, INSTALLING OR RECOVERING SUCH HARDWARE, SOFTWARE, OR DATA.

Any disputes arising between manufacturer and customer shall be governed by the laws of Santa Clara County in the State of California, USA. The State of California, County of Santa Clara shall be the exclusive venue for the resolution of any such disputes. Supermicro's total liability for all claims will not exceed the price paid for the hardware product.

FCC Statement: This equipment has been tested and found to comply with the limits for a Class A digital device pursuant to Part 15 of the FCC Rules. These limits are designed to provide reasonable protection against harmful interference when the equipment is operated in a commercial environment. This equipment generates, uses, and can radiate radio frequency energy and, if not installed and used in accordance with the manufacturer's instruction manual, may cause harmful interference with radio communications. Operation of this equipment in a residential area is likely to cause harmful interference, in which case you will be required to correct the interference at your own expense.

California Best Management Practices Regulations for Perchlorate Materials: This Perchlorate warning applies only to products containing CR (Manganese Dioxide) Lithium coin cells. "Perchlorate Material-special handling may apply. See www.dtsc.ca.gov/hazardouswaste/perchlorate".



WARNING: This product can expose you to chemicals including lead, known to the State of California to cause cancer and birth defects or other reproductive harm. For more information, go to www.P65Warnings.ca.gov.

The products sold by Supermicro are not intended for and will not be used in life support systems, medical equipment, nuclear facilities or systems, aircraft, aircraft devices, aircraft/emergency communication devices or other critical systems whose failure to perform be reasonably expected to result in significant injury or loss of life or catastrophic property damage. Accordingly, Supermicro disclaims any and all liability, and should buyer use or sell such products for use in such ultra-hazardous applications, it does so entirely at its own risk. Furthermore, buyer agrees to fully indemnify, defend and hold Supermicro harmless for and against any and all claims, demands, actions, litigation, and proceedings of any kind arising out of or related to such ultra-hazardous use or sale.

Manual Revision 1.0

Release Date: June 16, 2021

Unless you request and receive written permission from Super Micro Computer, Inc., you may not copy any part of this document. Information in this document is subject to change without notice. Other products and companies referred to herein are trademarks or registered trademarks of their respective companies or mark holders.

Copyright © 2021 by Super Micro Computer, Inc.
All rights reserved.

Printed in the United States of America

Preface

About this User's Guide

This user's guide is written for system integrators, IT technicians, and knowledgeable end users. It provides information for the installation and use of the AOC-SMG3-2M2-B expansion card.

About this Expansion Card

The AOC-SMG3-2M2-B is an M.2 SSD carrier card that connects up to two M.2 solid state drives (SSDs), and is built for use in BigTwin™ systems. It supports NVMe and two form factors: 22x80mm on the top or bottom side, or 110mm on the bottom side with OEM SKU support. It can be pre-installed on a server, or can be ordered and added separately. M.2 solid-state technology is an optimized, high-performance scalable storage solution, effectively streamlined for enterprise and client systems that leverage the cutting-edge capabilities of PCI Express.

An Important Note to the User

All images and layouts shown in this user's guide are based upon the latest PCB revision available at the time of publishing. The card you have received may or may not look exactly the same as the graphics shown in this user's guide.

Returning Merchandise for Service

A receipt or copy of your invoice marked with the date of purchase is required before any warranty service will be rendered. You can obtain service by calling your vendor for a Returned Merchandise Authorization (RMA) number. When returning the AOC-SMG3-2M2-B card to the manufacturer, the RMA number should be prominently displayed on the outside of the shipping carton, and the shipping package is mailed prepaid or hand-carried. Shipping and handling charges will be applied for all orders that must be mailed when service is complete. For faster service, you can also request a RMA authorization online <http://www.supermicro.com/RmaForm/>.

This warranty only covers normal consumer use and does not cover damages incurred in shipping or from failure due to the alteration, misuse, abuse or improper maintenance of products.

During the warranty period, contact your distributor first for any product problems.

Conventions Used in the User's Guide

Pay special attention to the following symbols for proper system installation and for safety instructions to prevent damage to the system or injury to yourself.

Note: Additional information given for proper system setup.

Contacting Supermicro

Headquarters

Address: Super Micro Computer, Inc.
980 Rock Ave.
San Jose, CA 95131 U.S.A.

Tel: +1 (408) 503-8000

Fax: +1 (408) 503-8008

Email: marketing@supermicro.com (General Information)
support@supermicro.com (Technical Support)

Website: www.supermicro.com

Europe

Address: Super Micro Computer B.V.
Het Sterrenbeeld 28, 5215 ML
's-Hertogenbosch, The Netherlands

Tel: +31 (0) 73-6400390

Fax: +31 (0) 73-6416525

Email: sales@supermicro.nl (General Information)
support@supermicro.nl (Technical Support)
rma@supermicro.nl (Customer Support)

Website: www.supermicro.nl

Asia-Pacific

Address: Super Micro Computer, Inc.
3F, No. 150, Jian 1st Rd.
Zhonghe Dist., New Taipei City 235
Taiwan (R.O.C)

Tel: +886-(2) 8226-3990

Fax: +886-(2) 8226-3992

Email: support@supermicro.com.tw

Website: www.supermicro.com.tw

Table of Contents

Preface

About this User's Guide	iii
About this Expansion Card.....	iii
An Important Note to the User.....	iii
Returning Merchandise for Service.....	iii
Conventions Used in the User's Guide.....	iv
Contacting Supermicro.....	v

Chapter 1 Overview

1-1 Overview	1-1
1-2 Technical Specifications	1-1
General.....	1-1
OS Support	1-1
Physical Dimensions	1-2

Chapter 2 Hardware Components

2-1 Expansion Card Layout and Components	2-1
2-2 Major Components	2-1
2-3 Connectors and LEDs.....	2-2
M.2 Sockets.....	2-2
Activity and Fail LEDs	2-3
1.8V Indicator LED	2-3
2-4 Standoffs	2-4

Chapter 3 Installation

3-1 Static-Sensitive Devices.....	3-1
Precautions	3-1
Unpacking	3-1
3-2 Installing Expansion Cards	3-2
Removing the M.2 Carrier Card.....	3-6
3-3 Additional Settings	3-7

Chapter 4 RAID Configuration

4-1 RAID Minimum Drive Requirements	4-1
4-2 RAID Configuration Using the Marvell NVMe Configuration Utility	4-2
4-3 RAID Configuration in Redfish API.....	4-12

Chapter 5 Controller Firmware Update

5-1 Firmware Update in a Linux System.....	5-1
5-2 Firmware Update under UEFI Shell.....	5-1
5-3 Firmware Update in Redfish API.....	5-2

Chapter 1

Overview

1-1 Overview

Congratulations on purchasing your expansion card from an acknowledged leader in the industry. Supermicro products are designed with the utmost attention to detail to provide you with the highest standards in quality and performance. For product support and updates, please refer to our website at <http://www.supermicro.com>.

1-2 Technical Specifications

General

NVMe RAID Controller M.2 carrier riser card for X12 BigTwin

Supports x2 M.2 M-key connectors for the following lengths: 80mm, 110mm (bottom side only) (There is limited support for M.2 22x110mm options. Please contact your Supermicro Sales representative for more information.)

Each NVMe M.2 SSD links to a full 2x PCIe Gen3

Supports RAID 0, 1

Supports activity/fail/rebuild LED onboard for each M.2 SSD

Gen4 x16 PCIe slot riser card function

OS Support

The following operating systems and their later versions are supported:

Windows

Linux

VMware

Contact Supermicro tech support at www.supermicro.com for assistance with any hardware limitations associated with your motherboard. (Note: For proper system configuration and setup, please refer to the product page at www.supermicro.com for any limitations associated with your motherboard.)

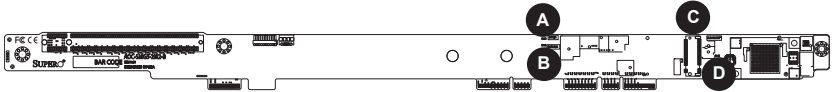
Physical Dimensions

Card PCB dimensions: 1.24" x 18.05" (H x L)

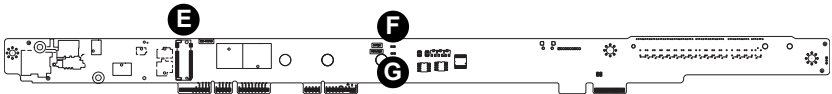
Chapter 2

Hardware Components

2-1 Expansion Card Layout and Components



The AOC-SMG3-2M2-B Top Layout



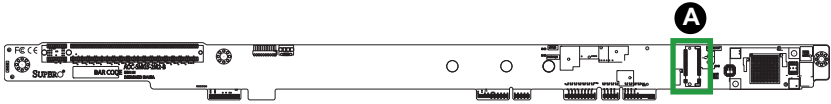
The AOC-SMG3-2M2-B Bottom Layout

2-2 Major Components

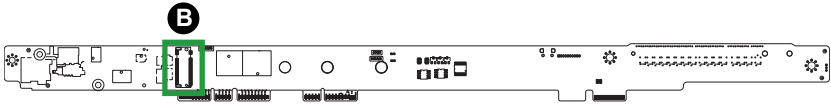
The following major components are on the AOC-SMG3-2M2-B:

- A. M.2 Slot 1 Activity LED
- B. M.2 Slot 1 Fault LED
- C. M.2 Slot 1
- D. 1.8V Indicator LED
- E. M.2 Slot 2
- F. M.2 Slot 2 Activity LED
- G. M.2 Slot 2 Fault LED

2-3 Connectors and LEDs



The AOC-SMG3-2M2-B Top NVMe Connector

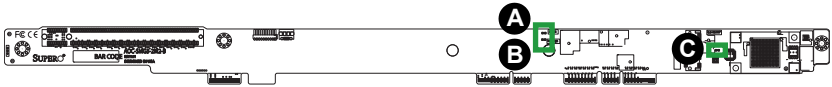


The AOC-SMG3-2M2-B Bottom NVMe Connector

- A. M.2 Socket 1, designated CN1
- B. M.2 Socket 2, designated CN2

M.2 Sockets

There are two M.2 sockets on the expansion card, designated CN1 and CN2. The card can support one NVMe SSD on CN1, or two NVMe SSDs on CN1 and CN2.



The AOC-SMG3-2M2-B Top LEDs



The AOC-SMG3-2M2-B Bottom LEDs

- A. Activity LED, designated LED2
- B. Fault LED, designated LED5
- C. 1.8V Indicator LED, designated LED1
- D. Activity LED, designated LED3
- E. Fault LED, designated LED6

Activity and Fail LEDs

There are two Activity LEDs on the AOC-SMG3-2M2-B, designated LED2 and LED3, and two Fault LEDs, designated LED5 and LED6. See the table below for information.

Activity & Fault LED Status		
LED	Color	Status
LED2	Green	Blinks whenever there is read or write activity on M.2 Socket 1
LED3	Green	Blinks whenever there is read or write activity on M.2 Socket 2
LED5	Red	Turns on whenever there is a drive failure on M.2 Socket 1
LED6	Red	Turns on whenever there is a drive failure on M.2 Socket 2

1.8V Indicator LED

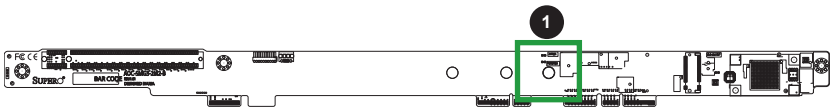
There is one 1.8V Indicator LED on the AOC-SMG3-2M2-B, designated LED1. See the table below for information.

1.8V Indicator LED Status		
LED	Color	Status
LED1	Green	Turns on whenever 1.8V power is ready

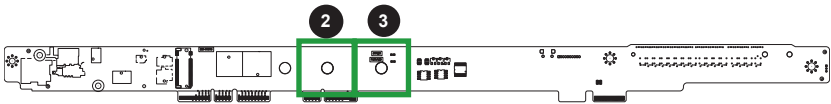
2-4 Standoffs

The AOC-SMG3-2M2-B standoffs support M.2 SSDs of 22x80mm length on the top and bottom side. There is also limited support for M.2 22x110mm options. Please contact your Supermicro Sales representative for more information. Place the standoffs as indicated below:

M.2 Standoff Options	
M.2 Length	Standoff Positions
22mm x 80mm	1
22mm x 80mm	2
22mm x 110mm	3



The AOC-SMG3-2M2-B Top Standoff Positions



The AOC-SMG3-2M2-B Bottom Standoff Positions

Chapter 3

Installation

3-1 Static-Sensitive Devices

Electrostatic Discharge (ESD) can damage electronic components. To avoid damaging your expansion card, it is important to handle it very carefully. The following measures are generally sufficient to protect your equipment from ESD.

Precautions

- Use a grounded wrist strap designed to prevent static discharge.
- Touch a grounded metal object before removing the expansion card from the antistatic bag.
- Handle the expansion card by its edges only; do not touch its components or peripheral chips.
- Put the expansion card back into the antistatic bags when not in use.
- For grounding purposes, make sure that your system chassis provides excellent conductivity between the power supply, the case, the mounting fasteners and the expansion card.

Unpacking

The expansion card is shipped in antistatic packaging to avoid static damage. When unpacking your component, make sure you are static protected.

Note: To avoid damaging your components and to ensure proper installation, be sure to always connect the power cord last, and always remove it before adding, removing, or changing any hardware components.

3-2 Installing Expansion Cards

The AOC-SMG3-2M2-B supports up to two M.2 SSDs of 80mm length, or one M.2 SSD of 80mm length and the other of 110mm length. Visit the Supermicro website for a current list of supported M.2 SSDs.

Installing Expansion Cards

1. Power down the system and remove the power cord from the rear of the power supply.
2. Use industry-standard anti-static equipment (such as gloves or wrist strap) and follow the precautions on page 3-1 to avoid damage caused by ESD.
3. For the first SSD, unscrew the metal standoff from the 80mm hole on the top side of the carrier card.

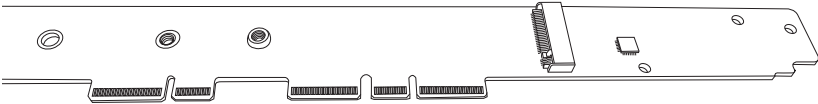


Figure 1. Selecting the Standoff Hole

4. Insert the SSD into the slot on the top side of the carrier card.

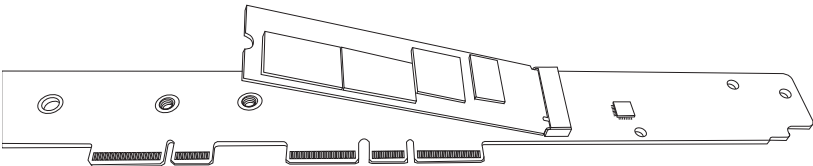


Figure 2. Inserting the First SSD

5. Flatten the SSD against the base of the metal standoff.

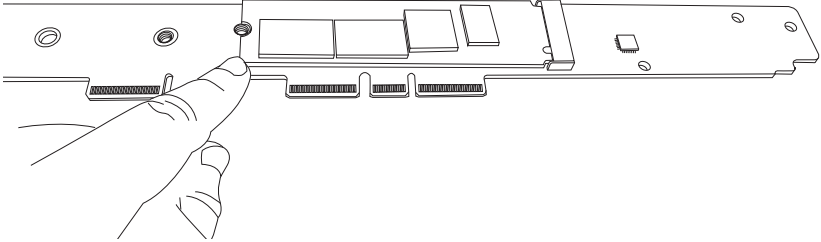


Figure 3. Inserting the Standoff

6. Secure the SSD in place by screwing in the metal standoff.

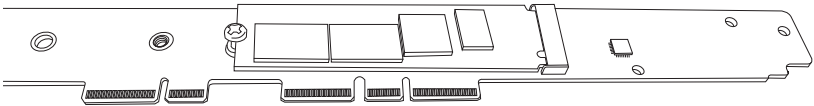


Figure 4. Inserting the Second SSD

7. If installing a second SSD, repeat steps 3-6 on the bottom side of the carrier card using either the 80mm or 110mm hole and the bottom side M.2 slot.

8. Power down the node and remove it from the chassis.
9. Remove the expansion card screw and set it aside. Remove the PCI slot shield.
10. Attach brackets onto the M.2 carrier-and-riser card, if necessary.

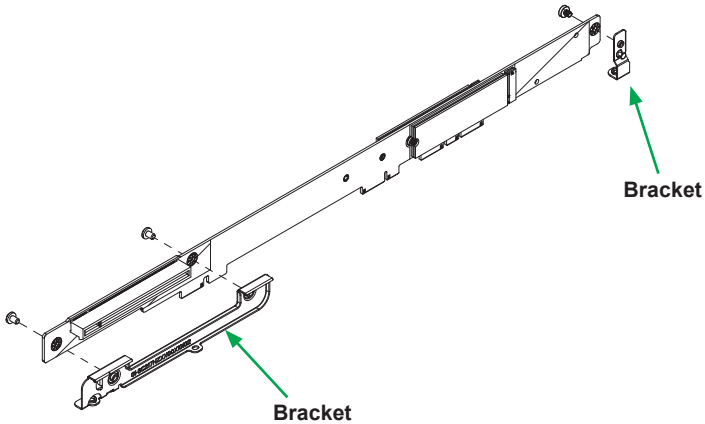


Figure 5. Installing Brackets

11. Insert an expansion card into the riser slot of the M.2 carrier-and-riser card to create an assembly (not shown).
12. Install the M.2 SSD, if necessary.
13. Align the assembly with SLOT2 on the motherboard and the PCI slot shield at the node rear and insert the assembly into the motherboard.
14. Reinstall the expansion card screw, reinsert the node into the chassis, and power up the system.

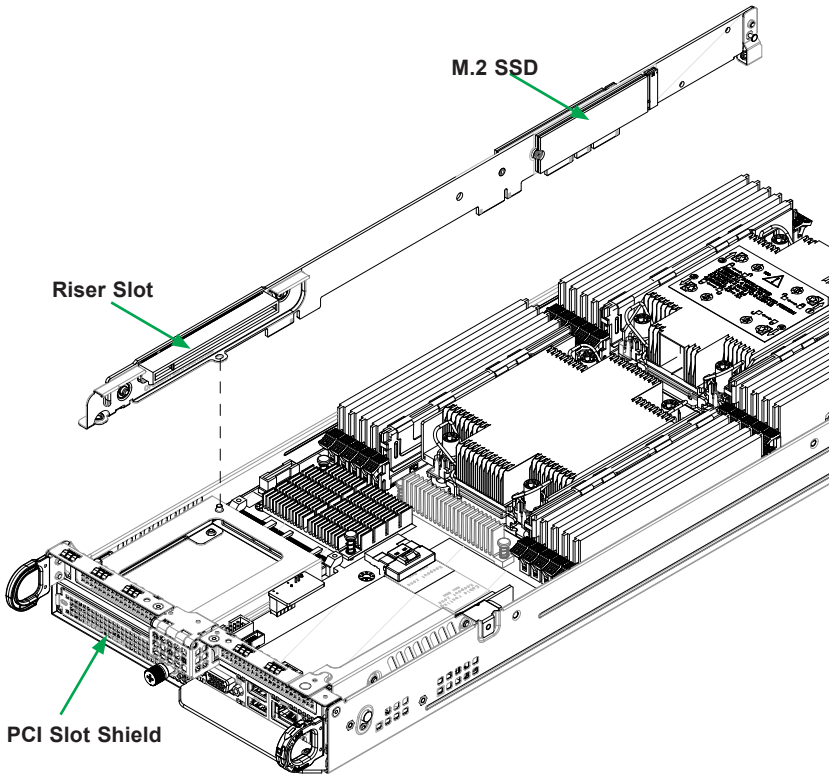


Figure 6. Installing Expansion Card onto M.2 Carrier-and-Riser Card

Removing the M.2 Carrier Card

If an M.2 carrier card is installed in your server, remove it to add M.2 solid state devices (SSDs).

To Remove the M.2 Carrier Card

1. Power down the node and remove it from the chassis.
2. Remove any DIMMs obstructing access to the carrier card.
3. Remove the two screws from the left side (viewed from the chassis front) of the node chassis that secure the carrier card to the node chassis. (See Figure 8.)

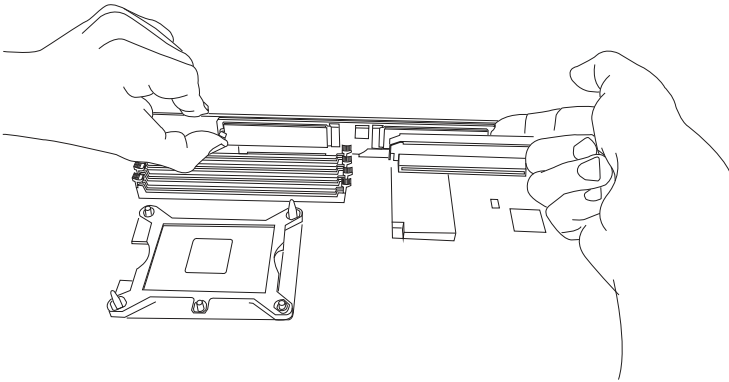


Figure 7. Removing the Carrier Card

4. Pull the card out of the socket by both notched edges (front and back) of the card. Be careful not to exert any force on any M.2 SSDs already installed on the card.
5. If you want to remove an installed SSD, remove the plug from the standoff and allow the M.2 SSD to lift up at an angle before removing it from the M.2 slot.

3-3 Additional Settings

Depending on the system, motherboard, and BIOS version, the following BIOS settings may be necessary for the proper operation of M.2 NVMe drives:

- Having the CPU IOU settings set to x4x4x4x4 PCIe bifurcation. This option may be found under **BIOS Setup -> Advanced -> Chipset Configuration -> North Bridge -> IIO Configuration -> CPU Configuration -> IOU Setting -> x4x4x4x4**.
- Having the NVMe Firmware Source set to AMI Native Support. This option may be found under **BIOS Setup -> Advanced -> PCIe/PCI/PnP Configuration -> NVMe Firmware Source -> AMI Native Support**.

Refer to the applicable system or motherboard User Manual.

Chapter 4

RAID Configuration

This chapter provides instructions on how to configure RAID.

4-1 RAID Minimum Drive Requirements

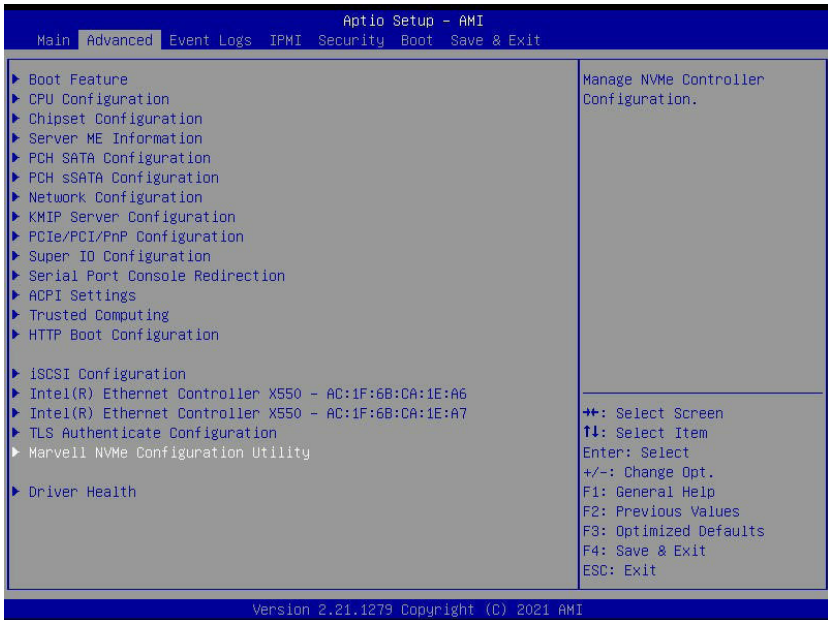
The AOC-SMG3-2M2-B carrier card supports up to 2 M.2 SSDs with RAID 0 and RAID 1.

RAID	Minimum Hard Drives
RAID 0	2
RAID 1	2

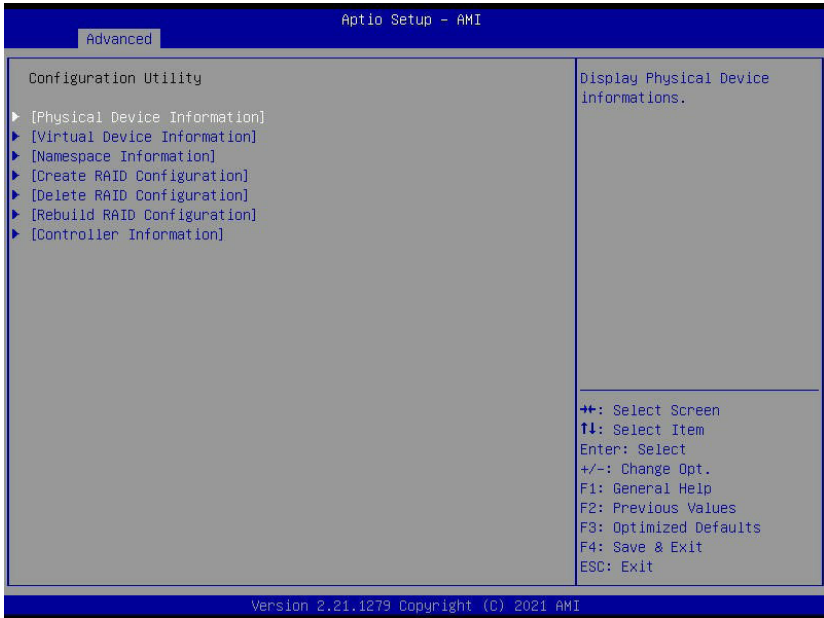
4-2 RAID Configuration Using the Marvell NVMe Configuration Utility

Follow the steps below to use the Marvell NVMe Configuration Utility.

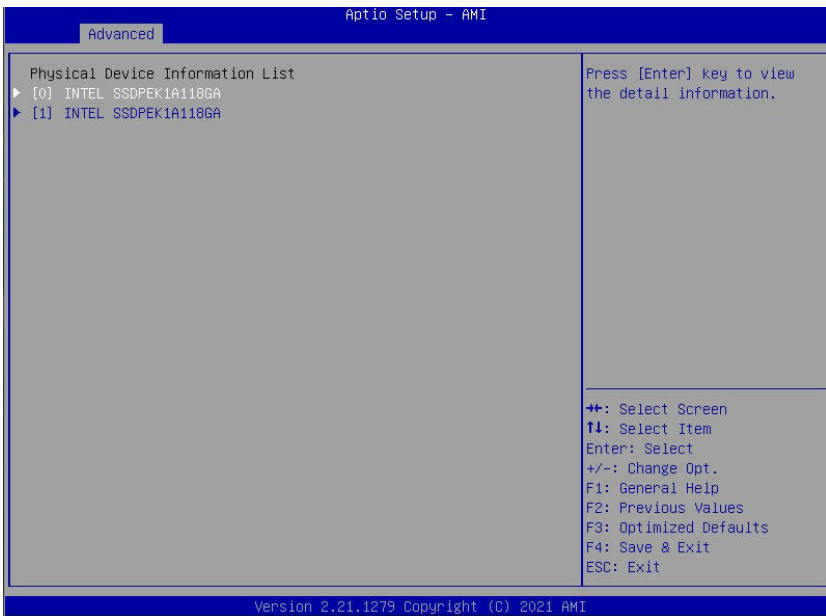
1. Reset the system.
2. Press to enter the BIOS Setup Utility under UEFI mode.
3. When the below screen appears, select Marvell NVMe Configuration Utility.



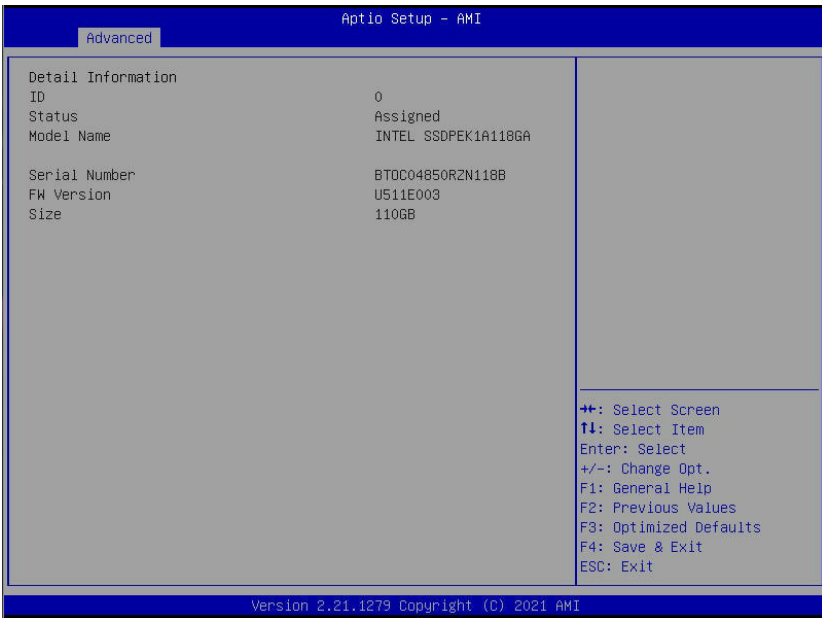
4. On the Configuration Utility main menu, select Physical Device Information.



5. The Physical Device Information list will appear.



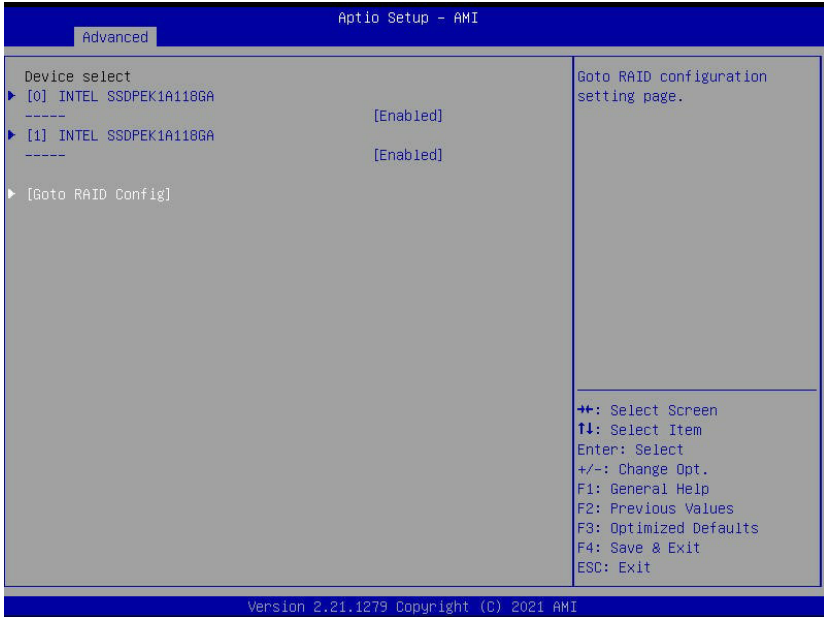
6. Select each physical device to view its details.



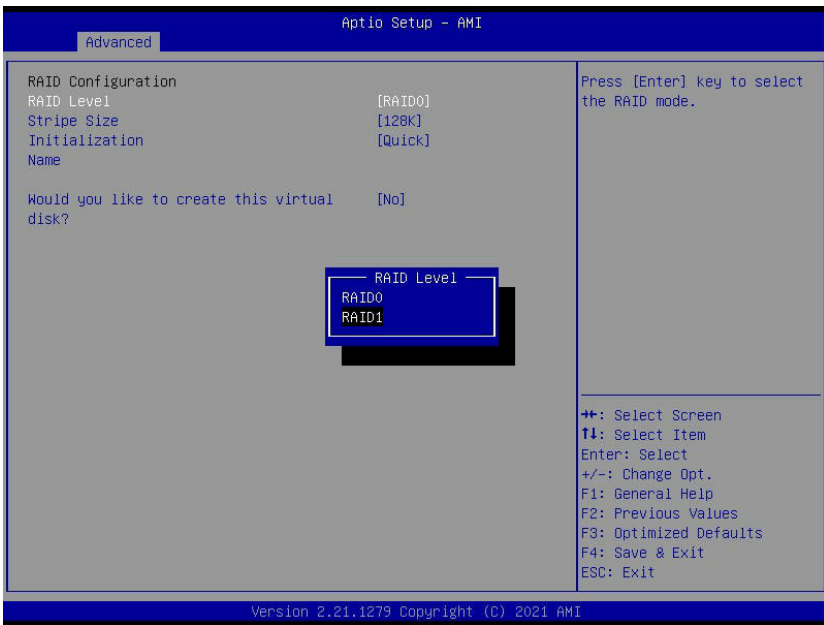
7. Configuration Utility main menu, enter Create RAID Configuration.



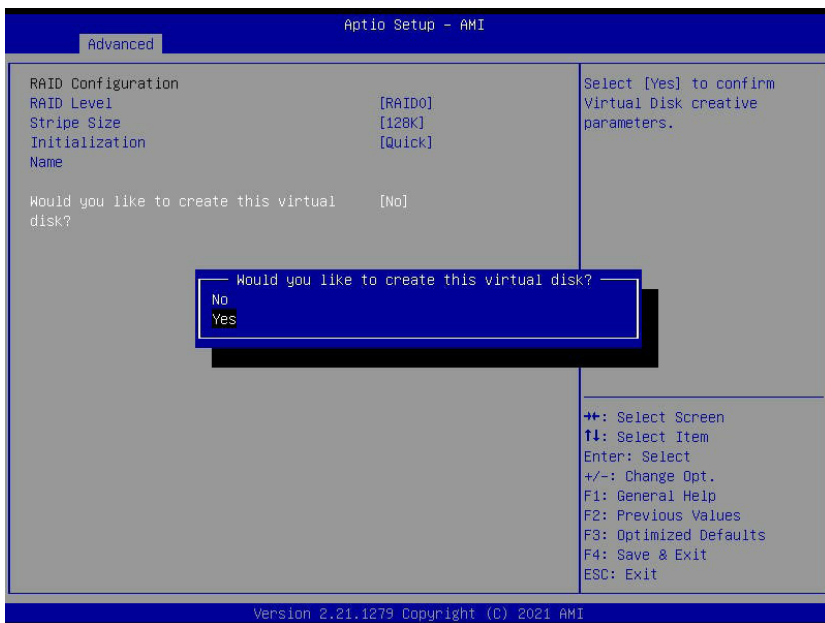
8. After enabling a selected device, select Goto RAID Config.



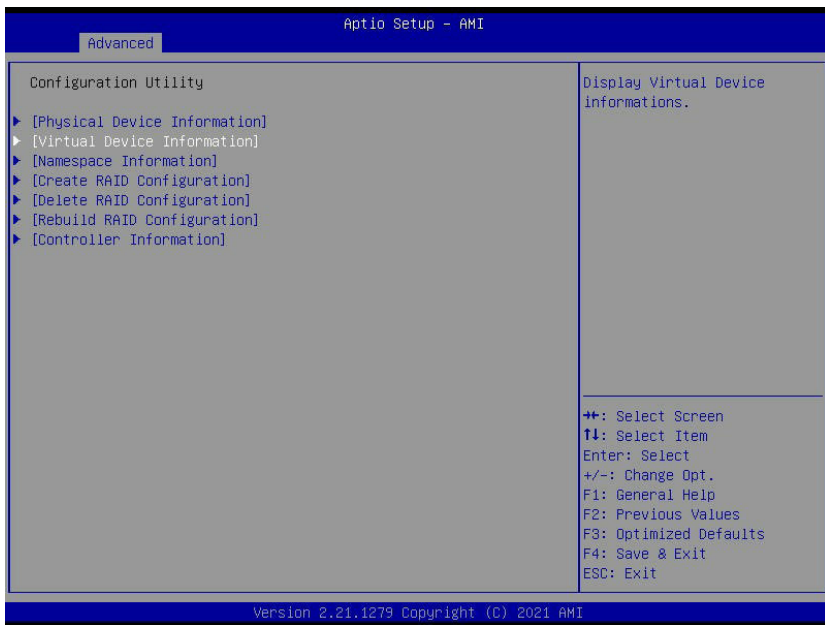
9. Select a RAID Level.



10. Create a virtual disk by selecting Yes on the prompt shown below.

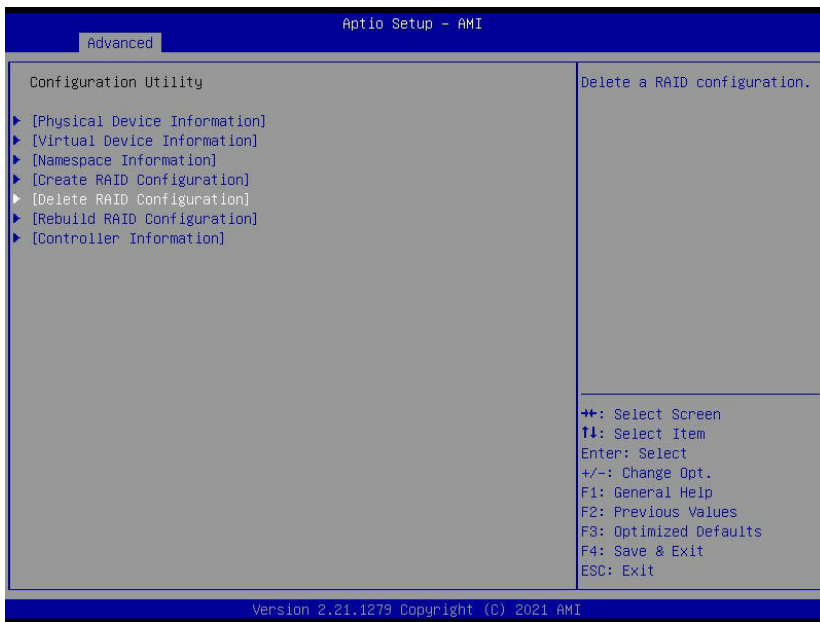


11. Navigate to and enter Virtual Device Information to view the details for a virtual device.

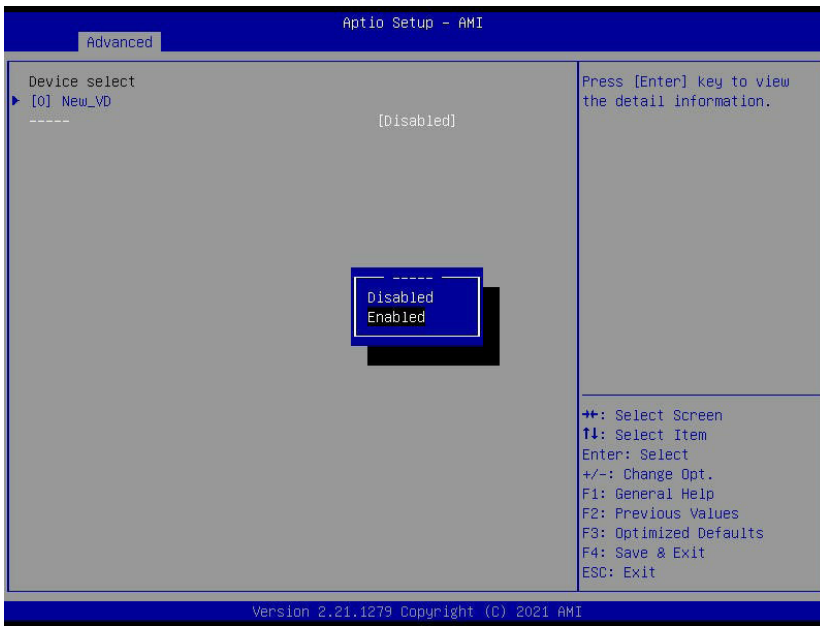




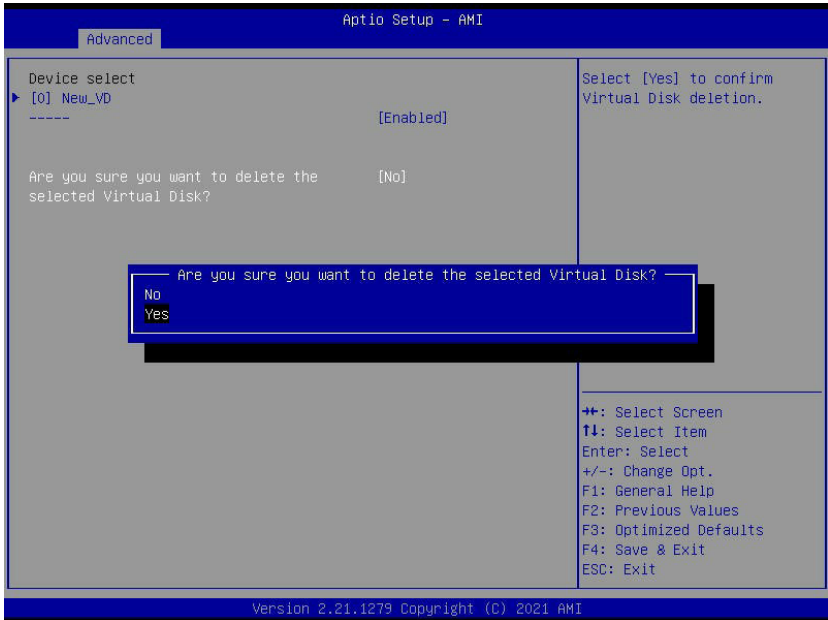
12. On the Configuration Utility main menu, enter the Delete RAID Configuration menu.



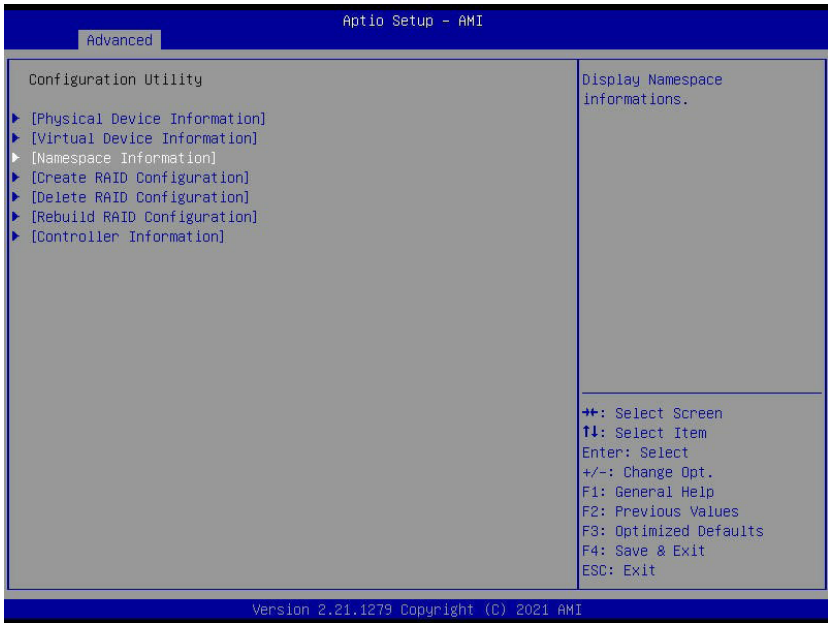
13. Select Enabled for a device.

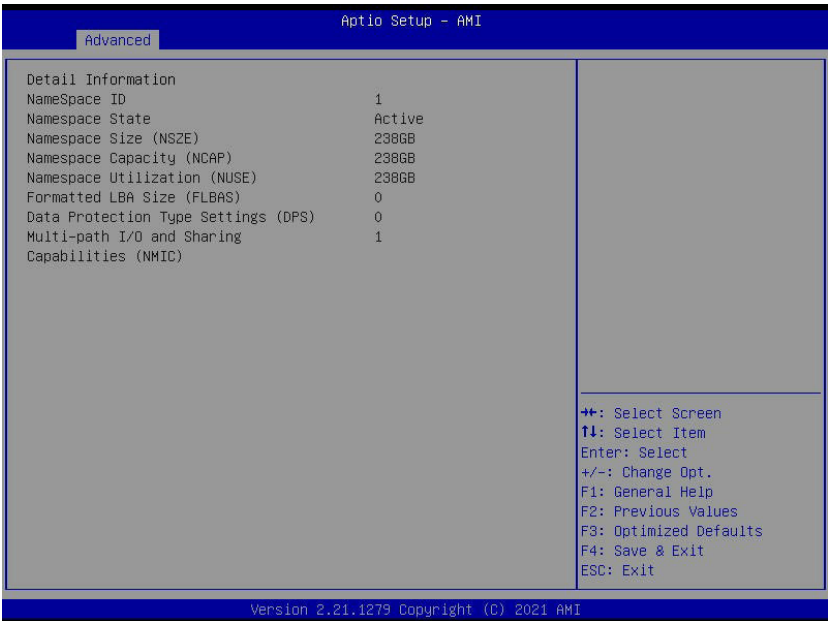
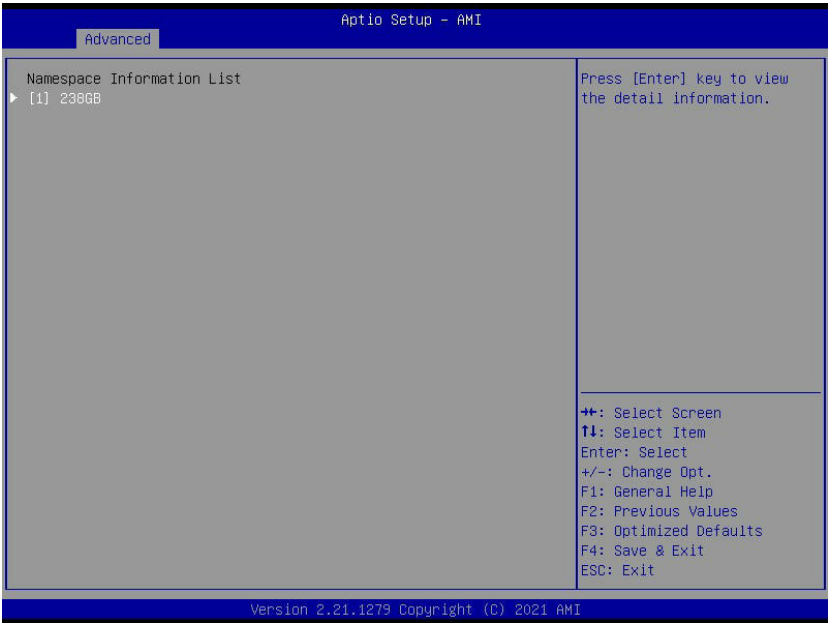


14. Select Yes to delete the virtual disk.

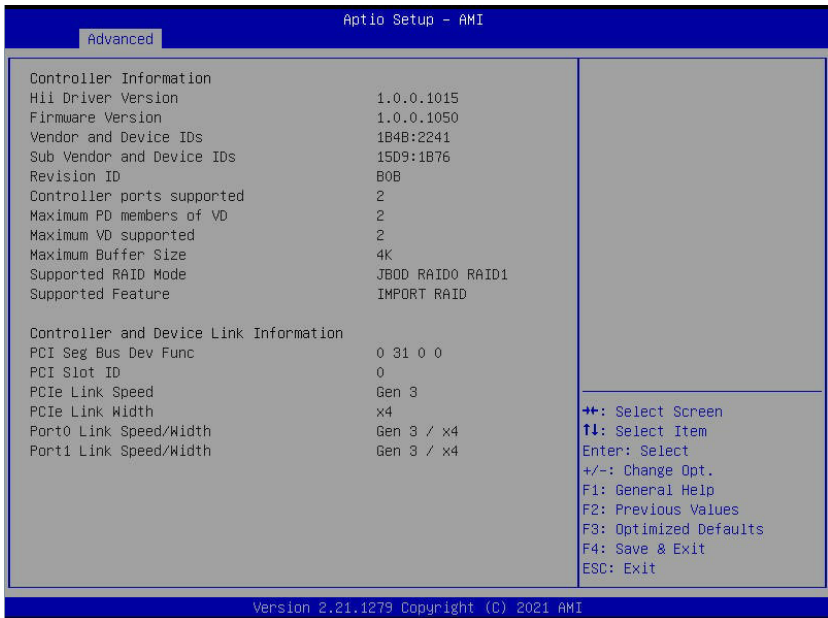
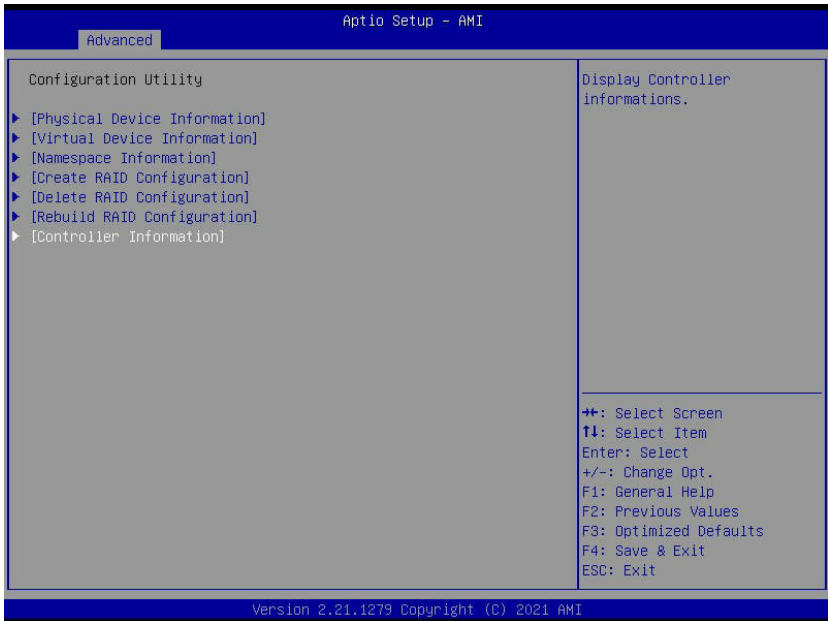


15. On the Configuration Utility main menu, select Namespace Information to view namespace details.





16. On the Configuration Utility main menu, select Controller Information to view details about the controller.



4-3 RAID Configuration in Redfish API

To view the Marvell controller, drive, and volume details:

URI: /BMCIP/redfish/v1/Systems/1/Storage/MRVL.HA-RAID

Method: GET

Response: 200

To create a virtual drive for Marvell:

URI: /BMCIP/redfish/v1/Systems/1/Storage/MRVL.HA-RAID/Actions/Oem/Storage.CreateVD

Method: POST

Body: {

"PD":["MRVL.HA-RAID.0.StorageModule/Drives/Disk.Bay.0","MRVL.HA-RAID.0.StorageModule/Drives/Disk.Bay.1"],

"RaidLevel":"RAID1",

"StripeBlock":"128K",

"VDName":"VD_0",

"Namespace":1

}

Response: 200

To delete a virtual drive for Marvell:

URI: /BMCIP/redfish/v1/Systems/1/Storage/MRVL.HA-RAID/Volumes/
Controller.0.Volume.0/Actions/Oem/Volume.DeleteVD

Method: POST

Body: {}

Response: 200

Chapter 5

Controller Firmware Update

This chapter provides instructions on how to update the controller firmware.

5-1 Firmware Update in a Linux System

To update the controller firmware in a Linux system, copy "RawImage\raw.bin" to the folder "Update_Tool\linux\bin", and then run ./go.

```
[root@localhost linux]# ./go
The adapter count is 1.
ad_id=0
-----
MARVELL FLASH TOOL
-----
>>The file name is raw.bin and its size is 7340032.
0. Ven:DevID=1b4b:2241 SubVen:DevID=15d9:1b76 => Bus=31, Dev=0, Fun=0
The checksum of file is good.
Press "Y" to start, other key will skip...

Erase block 006ff000
Write address 006ff000

Write file is successful!!
exit...
[root@localhost linux]#
```

5-2 Firmware Update under UEFI Shell

To update the controller firmware under UEFI shell, follow the steps below.

1. Copy the file "RawImage\raw.bin" to the folder "Update_Tool\uefidocs\bin".
2. Run shell.efi first if go.nsh cannot run and the following description appears:

Syntax after analyzing exist(s)

Script Error Status: Abouted (Line number 12)

6. Run go.nsh uwholeimage y.

5-3 Firmware Update in Redfish API

Check whether the controller firmware update is supported under `/redfish/v1/UpdateService/FirmwareInventory/Marvell<num>`. To perform a Marvell firmware update using the image file available on the local system:

URI: `/BMCIP/redfish/v1/UpdateService/upload`

Method: POST

Response: 202

UpdateParameters: `{"Targets": ["/redfish/v1/Systems/1/Storage/MRVL.HA-RAID#/StorageControllers/<num>", "@Redfish.OperationApplyTime": "Immediate" }`

UpdateFile:<File>

}